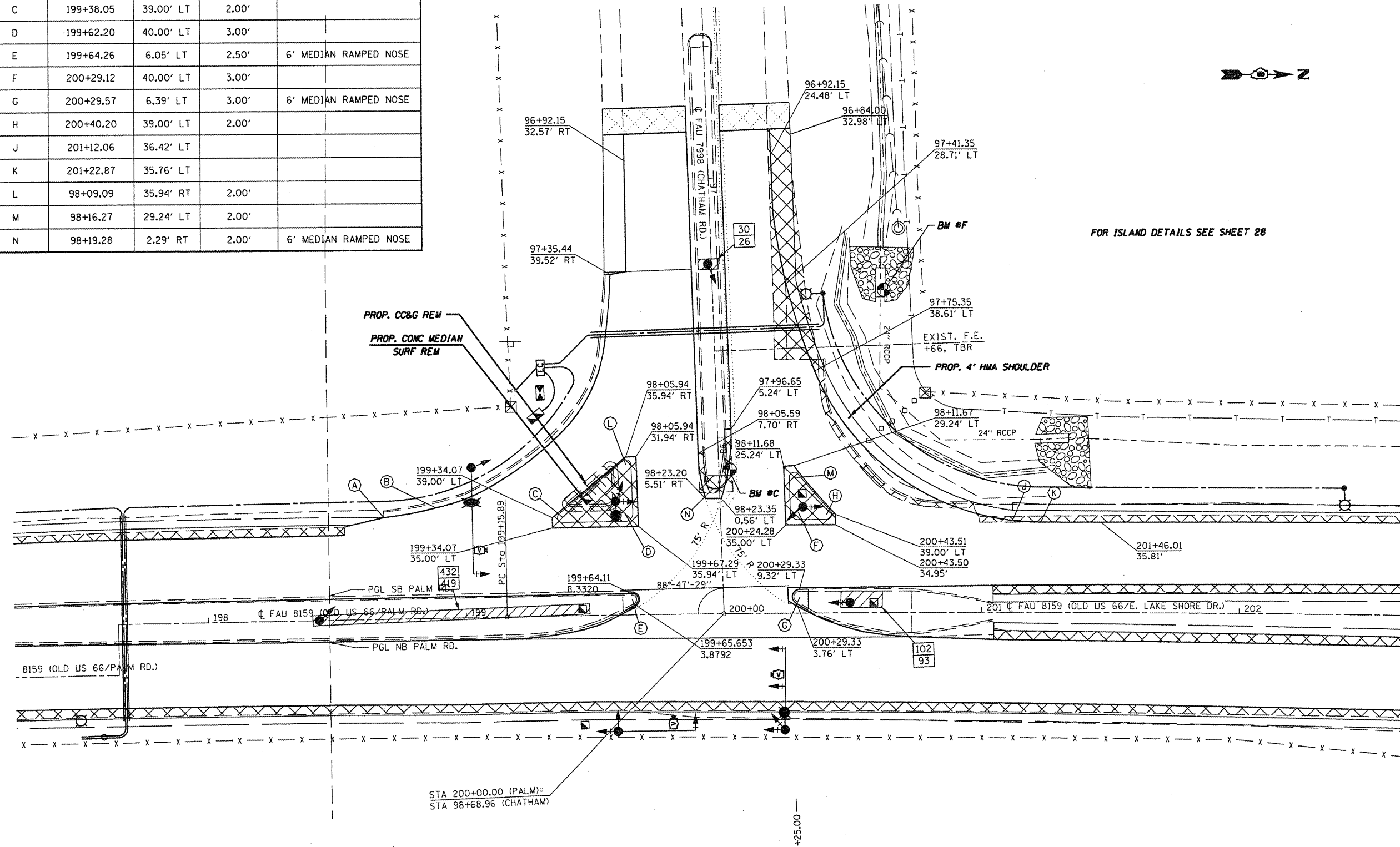


POINT	STATION	OFFSET	RADIUS	DESCRIPTION
A	198+68.72	40.24' LT		
B	198+88.95	43.66' LT		
C	199+38.05	39.00' LT	2.00'	
D	199+62.20	40.00' LT	3.00'	
E	199+64.26	6.05' LT	2.50'	6' MEDIAN RAMPED NOSE
F	200+29.12	40.00' LT	3.00'	
G	200+29.57	6.39' LT	3.00'	6' MEDIAN RAMPED NOSE
H	200+40.20	39.00' LT	2.00'	
J	201+12.06	36.42' LT		
K	201+22.87	35.76' LT		
L	98+09.09	35.94' RT	2.00'	
M	98+16.27	29.24' LT	2.00'	
N	98+19.28	2.29' RT	2.00'	6' MEDIAN RAMPED NOSE



FILE NAME = c:\pwork\puidot\cox\j\0221228\d672c8

USER NAME = coxjw  
 saht-intersec.dgn  
 PLOT SCALE = 40.0000' / in.  
 PLOT DATE = Oct-11-2011 10:58:54AM

DESIGNED -  
 DRAWN -  
 CHECKED -  
 DATE -

REVISED -  
 REVISED -  
 REVISED -  
 REVISED -

STATE OF ILLINOIS  
 DEPARTMENT OF TRANSPORTATION

INTERSECTION DETAIL  
 CHATHAM RD/PALM RD/E. LAKE SHORE DR.  
 SCALE: 20 SHEET NO. 1 OF 1 SHEETS STA. TO STA.

F.A.U. RTE.	SECTION	COUNTY	TOTAL SHEETS	SHEET NO.
7998	1107S,ML	SANGAMON	95	30
CONTRACT NO. T2C87			ILLINOIS FED. AID PROJECT	