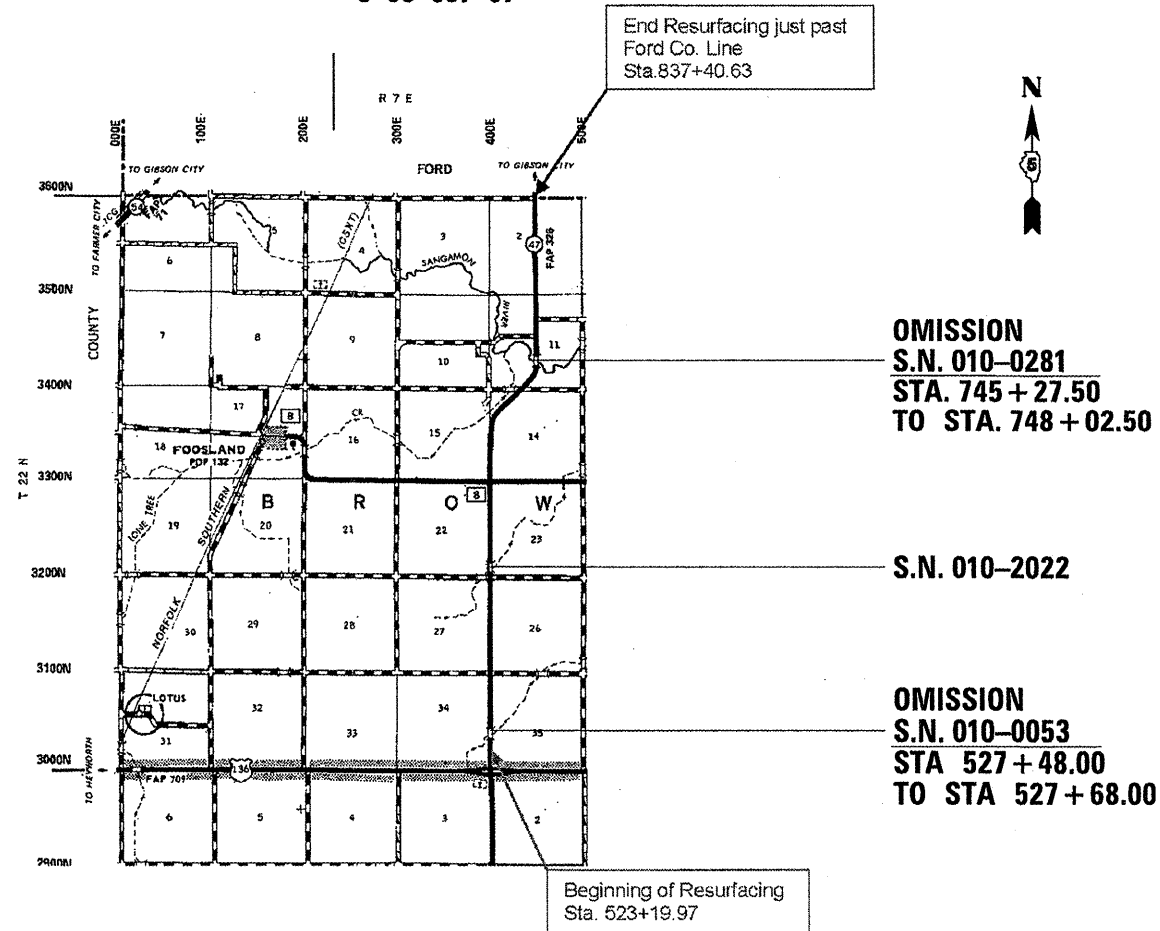


STATE OF ILLINOIS  
DEPARTMENT OF TRANSPORTATION  
DIVISION OF HIGHWAYS

**PROPOSED  
HIGHWAY PLANS**

ROUTE FAP 326 (IL 47)  
SECTION 129RS-3  
PROJECT ACF-0326(084)  
(3P) RESURFACING  
FORD CO. LINE TO US 136  
CHAMPAIGN CO.

C-95-087-07



OMISSION  
S.N. 010-0281  
STA. 745 + 27.50  
TO STA. 748 + 02.50

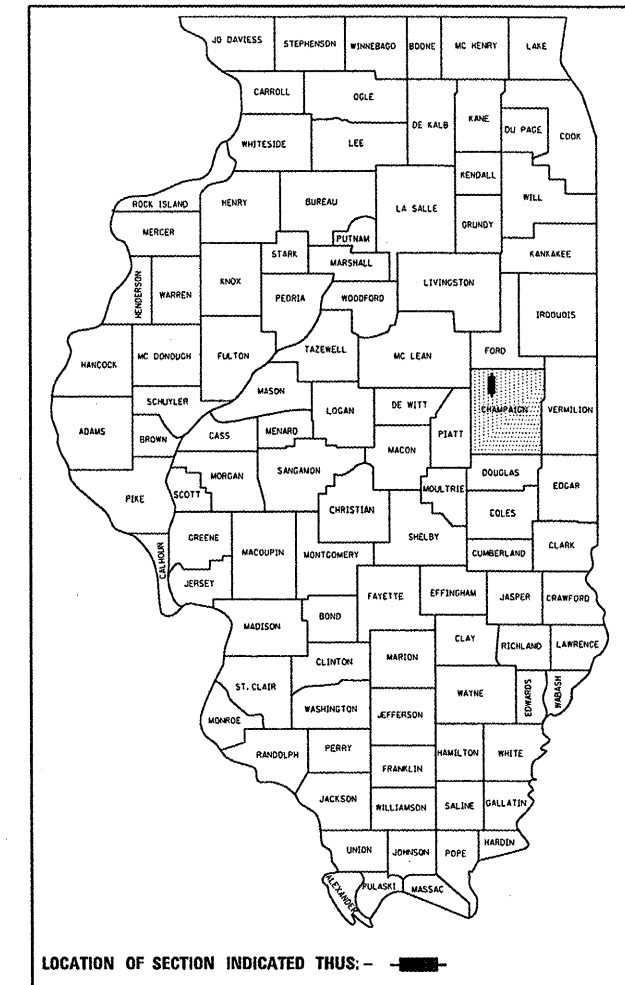
S.N. 010-2022

OMISSION  
S.N. 010-0053  
STA 527 + 48.00  
TO STA 527 + 68.00

GROSS LENGTH = 31420.66 FT. = 5.951 MILE  
NET LENGTH = 31,125.66 FT. = 5.895 MILE

F.A.P. RTE.	SECTION	COUNTY	TOTAL SHEETS	SHEET NO.
326	129RS-3	CHAMPAIGN	24	1
		ILLINOIS	CONTRACT NO. 70706	

D-95-087-07



LOCATION OF SECTION INDICATED THUS: - ■ -

FOR INDEX OF SHEETS, SEE SHEET NO. 2  
FOR SUMMARY OF QUANTITIES, SEE SHEET NO. 4

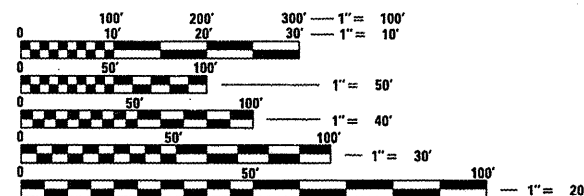
**STRUCTURE INFORMATION**

S.N.	SCOPE OF WORK
010-0281	PAVING OMISSION GUARDRAIL IMPROVMENT
010-2022	GUARDRAIL IMPROVMENT/ 1.5" HMA REM. & 2.25" NEW HMA
010-0053	PAVING OMISSION GUARDRAIL IMPROVMENT

CURRENT ADT = 3,475 (2010)

**DESIGN DESIGNATION**

OTHER PRINCIPAL ARTERIAL



FULL SIZE PLANS HAVE BEEN PREPARED USING STANDARD ENGINEERING SCALES. REDUCED SIZED PLANS WILL NOT CONFORM TO STANDARD SCALES. IN MAKING MEASUREMENTS ON REDUCED PLANS, THE ABOVE SCALES MAY BE USED.

J.U.L.I.E.  
JOINT UTILITY LOCATION INFORMATION FOR EXCAVATION  
1-800-892-0123  
OR 811

PROJECT ENGINEER: KEVIN TRAPP  
PROJECT MANAGER: MATT BOWER  
PROJECT DESIGNER: MATTHEW MURPHY  
PHONE NUMBER: (217) 465-4181  
CONTRACT NO. 70706

STATE OF ILLINOIS  
DEPARTMENT OF TRANSPORTATION  
DIVISION OF HIGHWAYS

SUBMITTED 8/15 20 11

*Paul E. Anderson*  
DEPUTY DIRECTOR OF HIGHWAYS, REGION ENGINEER

Oct 14 20 11  
*Scott E. Stitt P.E. Ia*  
ENGINEER OF DESIGN AND ENVIRONMENT

Oct 14 20 11  
*Christene M. Reed Ia*  
DIRECTOR OF HIGHWAYS, CHIEF ENGINEER

PRINTED BY THE AUTHORITY  
OF THE STATE OF ILLINOIS

## INDEX

1	COVER SHEET
2	INDEX OF SHEETS, HIGHWAYS STANDARDS, GENERAL NOTES
3	SUMMARY OF QUANTITIES
4-6	TYPICAL SECTIONS
7-12	SCHEDULE OF QUANTITIES
13-14	ALIGNMENT TIES AND BENCHMARKS
15-24	DETAILS

## HIGHWAY STANDARDS

000001-06	STANDARD SYMBOLS, ABBREVIATIONS, AND PATTERNS
001006	DECIMAL OF AN INCH AND OF A FOOT
280001-05	TEMPORARY EROSION CONTROL SYSTEMS
406201-01	MAILBOX TURNOUTS
442201-03	CLASS C AND D PATCHES
630001-09	STEEL PLATE BEAM GUARDRAIL
630101-09	GUARDRAIL MOUNTED ON EXISTING CULVERTS
630301-05	SHOULDER WIDENING FOR TYPE 1(SPECIAL) GUARDRAIL TERMINALS
635006-03	REFLECTOR AND TERMINAL MARKER PLACEMENT
635011-02	REFLECTOR MARKER AND MOUNTING DETAILS
667101-01	PERMANENT SURVEY MARKERS
701006-03	OFF-ROAD OPERATIONS, 2L, 2W, 4.5 m (15') to 600 mm (24") FROM PAVEMENT EDGE
701011-02	OFF-ROAD MOVING OPERATIONS, 2L, 2W, DAY ONLY
701201-04	LANE CLOSURE, 2L, 2W, DAY ONLY, FOR SPEEDS >= 45 MPH
701301-04	LANE CLOSURE, 2L, 2W, SHORT TIME OPERATIONS
701306-03	LANE CLOSURE, 2L, 2W, SLOW MOVING OPERATIONS DAY ONLY, FOR SPEEDS >= 45 MPH
701311-03	LANE CLOSURE, 2L, 2W, MOVING OPERATIONS - DAY ONLY
701901-01	TRAFFIC CONTROL DEVICES
780001-02	TYPICAL APPLICATION OF PAVEMENT MARKINGS
781001-03	TYPICAL APPLICATION OF RAISED REFLECTIVE PAVEMENT MARKERS

## GENERAL NOTES

G.N.-100  
ENGLISH UNITS OF MEASUREMENT SHALL GOVERN OVER AND SUPERSEDE ANY METRIC UNITS SHOWN IN THIS CONTRACT. WHERE INCLUDED, METRIC UNITS ARE FOR INFORMATION ONLY.

G.N.-100A  
ELECTRONIC FILES AND/OR ELECTRONIC SURVEY INFORMATION INCLUDING CADD FILES WILL NOT BE AVAILABLE TO THE CONTRACTOR.

G.N.-107.37  
UTILITY LINES WERE PLOTTED FROM INFORMATION FURNISHED BY THE VARIOUS UTILITY COMPANIES INVOLVED (QUALITY LEVEL C &/OR QUALITY LEVEL D) AND THE ACCURACY SHOULD BE CONSIDERED APPROXIMATE ONLY.

UTILITY COMPANIES MAY BE ADJUSTING THEIR FACILITIES DURING CONSTRUCTION. THE CONTRACTOR SHALL COOPERATE WITH THESE ORGANIZATIONS WHILE THESE ADJUSTMENTS ARE BEING PERFORMED. J.U.L.I.E. - JOINT UTILITY LOCATION INFORMATION FOR EXCAVATORS SYSTEM (800)892-0123 OR 811.

G.N.-250C SPL  
TEMPORARY EROSION CONTROL SEEDING IS INCLUDED IN THIS CONTRACT TO SEED NEW EARTH SHOULDERS DURING TIME PERIODS WHEN PERMANENT SEEDING IS NOT ALLOWED. SOME OR ALL OF THIS SEEDING WILL BE DELETED IF IT IS POSSIBLE TO PLACE PERMANENT SEEDING ON EARTH SHOULDERS AT THE TIME OF THEIR COMPLETION.

GN 406H Mixture Requirements Contract: 70706

Location	IL 47	IL 47	IL 47
Mixture Use	Surface, Shoulder, Incidental	Fine Graded Level Binder	Class D Patch HMA SHLD REM & REP SPL
AC/PG	PG 64-22	PG 64-22	PG 64-22
RAP % (Max)	10	15	15
Design Air Voids	4.0% @ Ndes=70	4.0% @ Ndes=70	4.0% @ Ndes=70
Mix Comp(Gradation)	IL 9.5	IL 9.5 F.G.	IL 19.0
Friction Aggregate	Mix C	Mix C	N.A.

G.N.-406  
THE QUANTITIES INCLUDED IN THE PLANS FOR HOT-MIX ASPHALT RESURFACING ARE INTENDED TO GIVE THE COVERAGE SHOWN ON THE TYPICAL CROSS SECTIONS. IT IS NOT INTENDED TO INCREASE THE THICKNESS OF THE HOT-MIX ASPHALT MIXTURE IN ORDER TO USE ALL OF THE QUANTITIES INCLUDED IN THE CONTRACT.

G.N.-406.05b  
ALL LEVELING BINDER OR BINDER SHALL BE GIVEN A FOG COAT OF PRIME BEFORE THE SURFACE COURSE IS PLACED WHEN DIRECTED BY THE ENGINEER.

THE FOG COAT WILL BE PAID FOR AT THE CONTRACT UNIT PRICE PER GALLON FOR BITUMINOUS MATERIAL (PRIME COAT) AND NO ADDITIONAL COMPENSATION WILL BE ALLOWED.

G.N.-442B - PATCHING SCHEDULES  
THE PATCHING SCHEDULES INCLUDED IN THE PLANS REPRESENT THE BEST INFORMATION AVAILABLE AT THE TIME OF COMPLETION OF THE PLANS FOR LETTING. VARIATIONS IN LOCATION AND SIZES OF BOTH FULL-DEPTH AND PARTIAL-DEPTH PATCHES MAY OCCUR.

G.N.-542  
BEFORE ORDERING PIPE CULVERTS, THE CONTRACTOR SHALL CONSULT THE ENGINEER FOR THE EXACT LENGTHS.

G.N.-667  
THE RESIDENT ENGINEER SHALL CONTACT THE PROGRAM DEVELOPMENT CHIEF OF SURVEYS PRIOR TO THE PRE-CONSTRUCTION CONFERENCE FOR INSTRUCTION AS TO SETTING OF TEMPORARY OR PERMANENT TIES FOR CENTERLINE ALIGNMENT CONTROL SURVEY MARKERS (PC'S, PT'S, AND PI'S). PROJECT IMPLEMENTATION PERSONNEL WILL BE RESPONSIBLE FOR LAYOUT OF THESE MARKERS.

G.N.-703A  
SHORT TERM PAVEMENT MARKING SHALL BE APPLIED TO THE PAVEMENT AFTER ANY OF THE FOLLOWING: COLD MILLING AND/OR PLACING BITUMINOUS MATERIALS (PRIME COAT), LEVELING BINDER (MACHINE METHOD), BINDER AND SURFACE COURSES. SHORT TERM PAVEMENT MARKING PLACED ON THE SURFACE, SHALL COINCIDE WITH THE FINAL PAVEMENT STRIPING. SHORT TERM PAVEMENT MARKING PLACED PRIOR TO THE SURFACE SHALL COINCIDE WITH THE EXISTING PAVEMENT MARKINGS. USE 4 FEET PER 40 FEET (OR 10% PER STATION).

G.N.-781  
RAISED REFLECTIVE PAVEMENT MARKERS SHALL BE PLACED IN ACCORDANCE WITH STANDARD 781001, AND THE DETAILS SHOWN IN THE PLANS. IF THERE IS ANY DISCREPANCY BETWEEN THE STANDARD AND THE DETAILS IN THE PLANS, THE DETAILS IN THE PLANS SHALL GOVERN. THE FINAL PAVEMENT MARKINGS SHALL BE IN PLACE PRIOR TO PLACING THE RAISED REFLECTIVE PAVEMENT MARKERS AND THE RAISED REFLECTIVE PAVEMENT MARKERS SHALL BE PLACED MIDWAY IN THE 30 FOOT (9 m) SPACE BETWEEN THE DASHED CENTERLINE STRIPES (WHEN APPLICABLE).

G.N.-1004.01  
COARSE AGGREGATE GRADATION CA-10 MAY BE USED WHENEVER COARSE AGGREGATE CA-6 IS SPECIFIED IN THE STANDARD SPECIFICATIONS.

NO COMMITMENTS

FILE NAME =	USER NAME = bucklesj	DESIGNED -	REVISED -	<b>STATE OF ILLINOIS DEPARTMENT OF TRANSPORTATION</b>	<b>INDEX HIGHWAY STANDARDS /GENERAL NOTES</b>	F.A.P. RTE.	SECTION	COUNTY	TOTAL SHEETS	SHEET NO.	
c:\pwork\puidot\bucklesj\d0180660\0570706-sht-Gennote.dgn		DRAWN -	REVISED -			326	129RS-3	Champaign	24	2	
PLOT SCALE = 40,0000' / in.		CHECKED -	REVISED -			CONTRACT NO. 70706					
PLOT DATE = 8/15/2011		DATE -	REVISED -			ILLINOIS FED. AID PROJECT					
						SCALE:	SHEET NO. OF SHEETS	STA. TO STA.			

# SUMMARY OF QUANTITIES

FAP326 (IL47)  
 CHAMPAIGN  
 COUNTY  
 RURAL  
 TWO LANE  
 FUNDING BREAKOUT: 80 % FEDERAL  
 20% STATE  
 CONSTRUCTION CODE: 0005

FAP326 (IL47)  
 CHAMPAIGN  
 COUNTY  
 RURAL  
 TWO LANE  
 FUNDING BREAKOUT: 80 % FEDERAL  
 20% STATE  
 CONSTRUCTION CODE: 0005

CODE NO	ITEM	UNIT	QUANTITY
20800150	TRENCH BACKFILL	CU YD	3.00
*25000200	SEEDING, CLASS 2	ACRE	0.25
*25000400	NITROGEN FERTILIZER NUTRIENT	POUND	23.0
*25000500	PHOSPHORUS FERTILIZER NUTRIENT	POUND	23.0
*25000600	POTASSIUM FERTILIZER NUTRIENT	POUND	23.0
*25100630	EROSION CONTROL BLANKET	SQ YD	570.00
28000250	TEMPORARY EROSION CONTROL SEEDING	POUND	25.00
28100205	STONE RIPRAP CLASS A3	TON	15.0
40600100	BITUMINOUS MATERIALS (PRIME COAT)	GALLON	10,402.0
40600300	AGGREGATE (PRIME COAT)	TON	208.0
40600895	CONSTRUCTING TEST STRIP	EACH	2.0
40600982	HOT-MIX ASPHALT SURFACE REMOVAL - BUTT JOINT	SQ YD	3,896.0
40600990	TEMPORARY RAMP	SQ YD	380.0
40603315	HOT-MIX ASPHALT SURFACE COURSE, MIX "C", N70	TON	8,738.0
40800010	BITUMINOUS MATERIALS (PRIME COAT)	GALLON	390.0
40800030	AGGREGATE (PRIME COAT)	TON	9.0
40800050	INCIDENTAL HOT-MIX ASPHALT SURFACING	TON	366.0
44000155	HOT-MIX ASPHALT SURFACE REMOVAL, 1 1/2"	SQ YD	103,752.0
44201729	CLASS D PATCHES, TYPE II, 7 INCH	SQ YD	447.0
44201733	CLASS D PATCHES, TYPE III, 7 INCH	SQ YD	364.0
44201735	CLASS D PATCHES, TYPE IV, 7 INCH	SQ YD	1,320.0
48102100	AGGREGATE WEDGE SHOULDER, TYPE B	TON	1,594.0
542A1093	PIPE CULVERTS, CLASS A, TYPE II, 48 INCH	FOOT	8.0
*63000001	STEEL PLATE BEAM GUARDRAIL, TYPE A, 6 FOOT POSTS	FOOT	1,263.0
*63000003	STEEL PLATE BEAM GUARDRAIL, TYPE A, 9 FOOT POSTS	FOOT	1,738.0

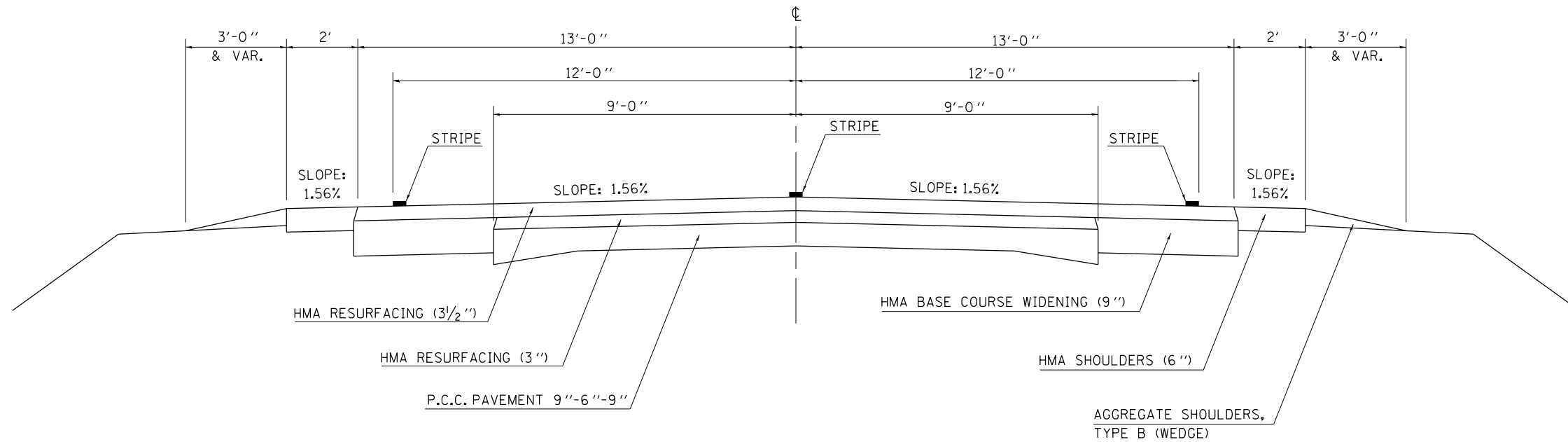
CODE NO	ITEM	UNIT	QUANTITY
*63000005	STEEL PLATE BEAM GUARDRAIL, TYPE B	FOOT	300.0
*63000025	STEEL PLATE BEAM GUARDRAIL, ATTACHED TO STRUCTURES	FOOT	126.0
*63100167	TRAFFIC BARRIER TERMINAL, TYPE 1(SPECIAL) TANGENT	EACH	12.0
*63100169	TRAFFIC BARRIER TERMINAL, TYPE 1(SPECIAL) FLARED	EACH	4.0
63200310	GUARDRAIL REMOVAL	FOOT	3,668.0
67000500	ENGINEER'S FIELD OFFICE, TYPE B	CAL MO	3.0
67100100	MOBILIZATION	L SUM	1.0
70100450	TRAFFIC CONTROL AND PROTECTION, STANDARD 701201	L SUM	1.0
70100460	TRAFFIC CONTROL AND PROTECTION, STANDARD 701306	L SUM	1.0
70300100	SHORT-TERM PAVEMENT MARKING	FOOT	8,570.0
70301000	WORK ZONE PAVEMENT MARKING REMOVAL	SQ FT	952.0
*78001110	PAINT PAVEMENT MARKING - LINE 4"	FOOT	73,364.0
78100100	RAISED REFLECTIVE PAVEMENT MARKER	EACH	424.0
*78200420	GUARDRAIL MARKERS, TYPE B	EACH	48.0
*78201000	TERMINAL MARKER - DIRECT APPLIED	EACH	16.0
*78300200	RAISED REFLECTIVE PAVEMENT MARKER REMOVAL	EACH	424.0
X4060637	LEVELING BINDER (MACHINE METHOD), IL9.5 FG, N70	TON	4,369.0
X4820110	HOT-MIX ASPHALT SHOULDER REMOVAL & REPLACEMENT (SPECIAL)	SQ YD	530.0
X5427600	REMOVE & RELOCATE END SECTION	EACH	1.0
XZ193300	SURVEY MARKER, TYPE 1(SPECIAL)	EACH	10.0
Z0070202	SURVEY MARKER VAULT	EACH	2.0

\* SPECIALTY ITEM

FILE NAME =	USER NAME = bucklesj	DESIGNED -	REVISED -	<b>STATE OF ILLINOIS DEPARTMENT OF TRANSPORTATION</b>	<b>SUMMARY OF QUANTITIES</b>			F.F.A. RTE.	SECTION	COUNTY	TOTAL SHEETS	SHEET NO.
c:\pwork\puidot\bucljesj\0180660\05	2706-shr-500.dgn	DRAWN -	REVISED -					326	129RS-3	Champaign	24	3
	PLOT SCALE = 40.0000' / 1"	CHECKED -	REVISED -		CONTRACT NO. 70706			ILLINOIS FED. AID PROJECT				
	PLOT DATE = 8/15/2011	DATE -	REVISED -		SCALE:	SHEET NO. OF	SHEETS	STA.	TO STA.			

## EXISTING TYPICAL CROSS SECTION

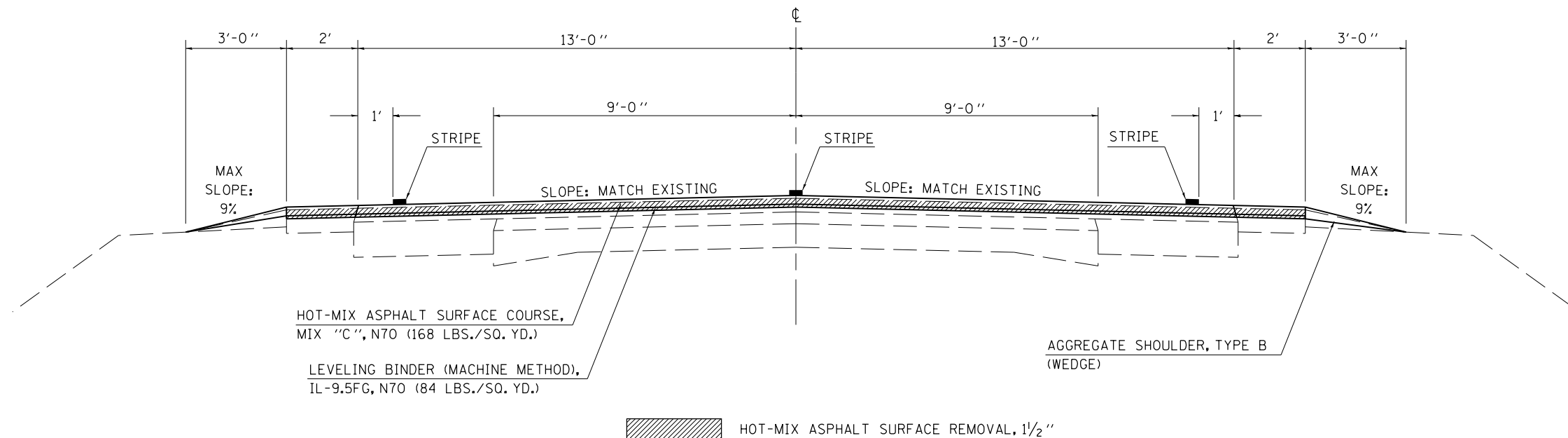
STATION	TO	STATION
523+19.97		527+48.00
527+68.00		696+50.30
708+42.90		732+38.09
744+34.90		745+27.50
748+02.50		774+32.30



## ① PROPOSED TYPICAL CROSS SECTION

STATION	TO	STATION
523+19.97		527+48.00 •
• 527+68.00		696+50.30 ②
② 708+42.90		732+38.09 ②
① 744+34.90		745+27.50 •
• 748+02.50		774+32.30 ③

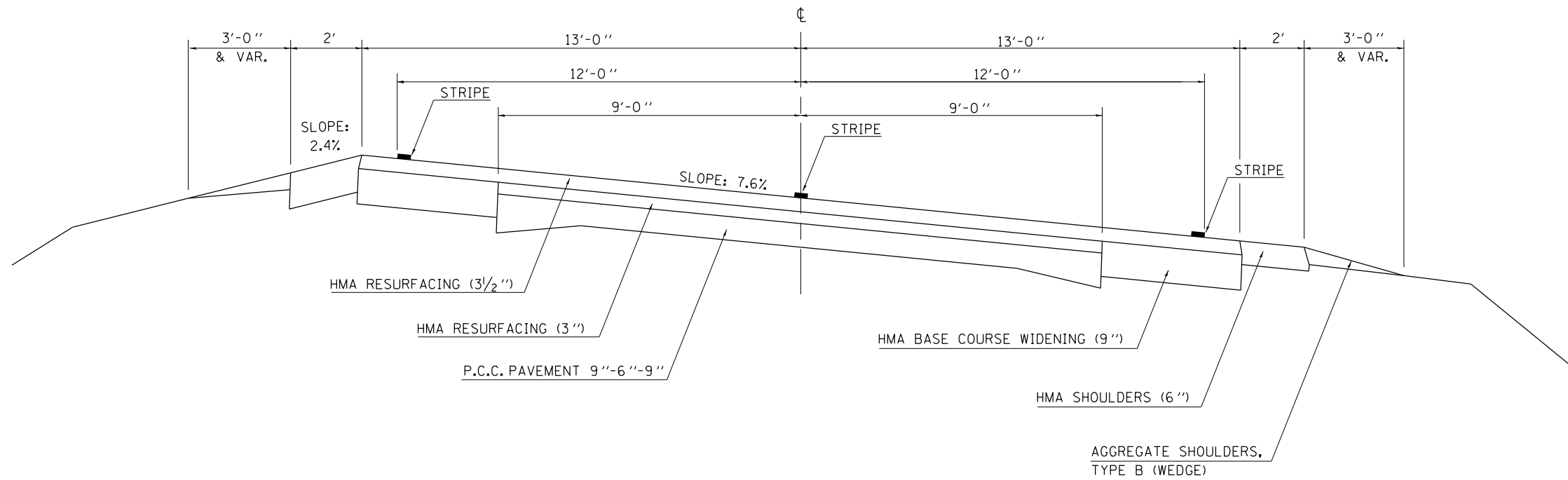
• **BRIDGE OMISSION**  
 S.N. 010-0053 STA. 527+48.00 - STA. 527+68.00  
 S.N. 010-0281 STA. 745+27.50 - STA. 748+02.50



FILE NAME =	USER NAME = bucklesjj	DESIGNED -	REVISED -	<b>STATE OF ILLINOIS DEPARTMENT OF TRANSPORTATION</b>	<b>EXISTING TYPICAL SECTION PROPOSED TYPICAL SECTION</b>	F.A.P. RTE.	SECTION	COUNTY	TOTAL SHEETS	SHEET NO.
et:\pwork\pwork\dot\bucklesjj\d0180660\0570706-sh-typical.dgn		DRAWN -	REVISED -			326	129R5-3	Champaign	24	4
PLOT SCALE = 40.0000' / in.		CHECKED -	REVISED -		SCALE:	SHEET NO. OF SHEETS		STA. TO STA.	CONTRACT NO. 70706	
PLOT DATE = 8/15/2011		DATE -	REVISED -			ILLINOIS FED. AID PROJECT				

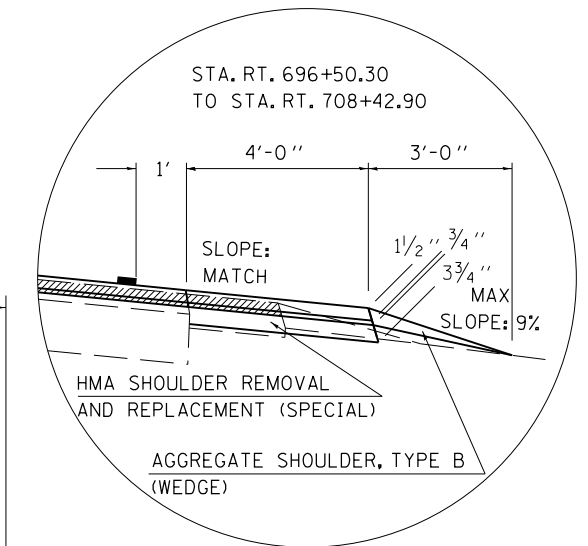
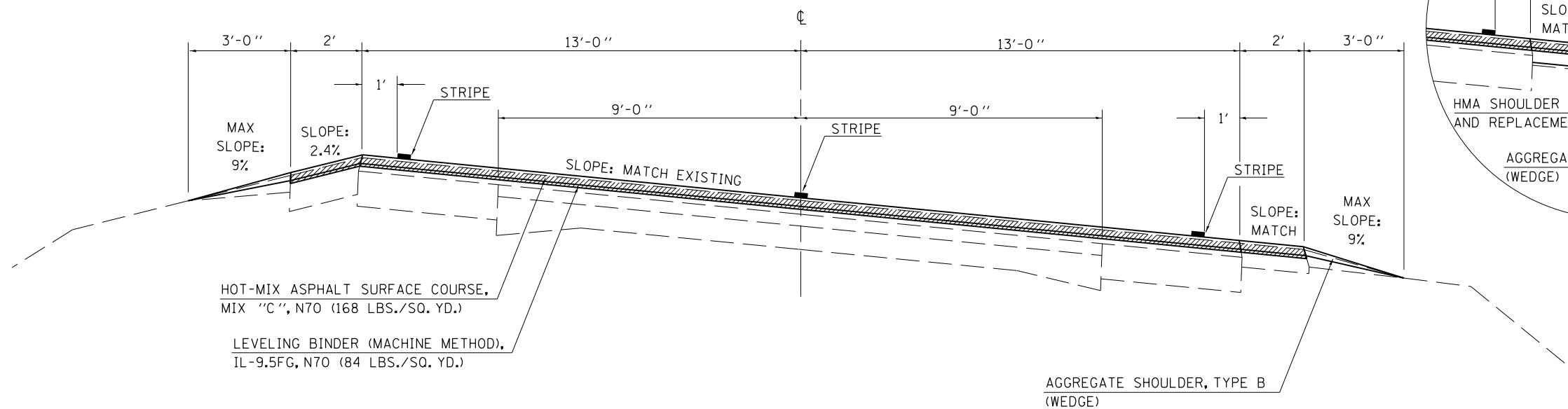
## EXISTING TYPICAL CROSS SECTION

STATION TO STATION  
 696+50.30 708+42.90  
 732+38.09 744+34.90



## ② PROPOSED TYPICAL CROSS SECTION

STATION TO STATION  
 ① 696+50.30 708+42.90 ①  
 ① 732+38.09 744+34.90 ①

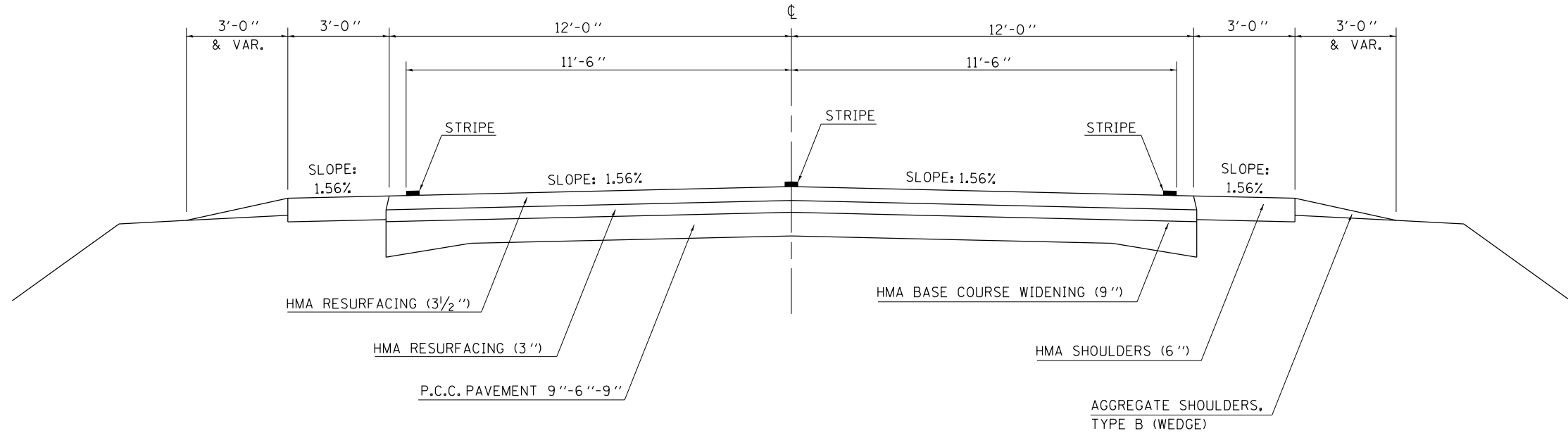


HOT-MIX ASPHALT SURFACE REMOVAL, 1/2"

FILE NAME =	USER NAME = bucklesjj	DESIGNED -	REVISED -	<b>STATE OF ILLINOIS DEPARTMENT OF TRANSPORTATION</b>	<b>EXISTING TYPICAL SECTION PROPOSED TYPICAL SECTION</b>	F.A.P. RTE. 326	SECTION 129RS-3	COUNTY Champaign	TOTAL SHEETS 24	SHEET NO. 5
et:\pwork\pwork\dot\bucklesjj\d0180660\0570706-sh-t-Typical.dgn		DRAWN -	REVISED -							
PLOT SCALE = 40.0000' / in.		CHECKED -	REVISED -							
PLOT DATE = 8/15/2011		DATE -	REVISED -		SCALE:	SHEET NO. OF	SHEETS	STA. TO STA.	ILLINOIS FED. AID PROJECT CONTRACT NO. 70706	

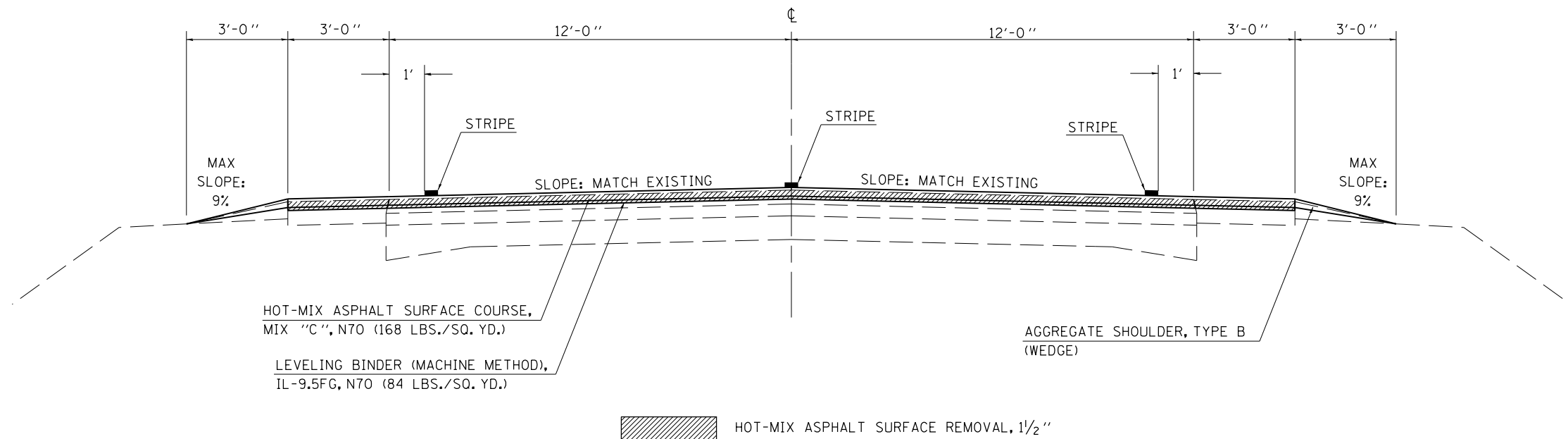
## EXISTING TYPICAL CROSS SECTION

STATION TO STATION  
774+32.30 837+40.63



## ③ PROPOSED TYPICAL CROSS SECTION

STATION TO STATION  
① 774+32.30 837+40.63



FILE NAME =	USER NAME = bucklesjj	DESIGNED -	REVISED -	<b>STATE OF ILLINOIS DEPARTMENT OF TRANSPORTATION</b>	<b>EXISTING TYPICAL SECTION PROPOSED TYPICAL SECTION</b>	F.A.P. RTE. =	SECTION =	COUNTY =	TOTAL SHEETS =	SHEET NO. =
et:\pwork\pwork\dot\bucklesjj\d0180660\0570706-sh-typical.dgn		DRAWN -	REVISED -			326	129RS-3	Champaign	24	6
PLOT SCALE = 40.0000' / in.		CHECKED -	REVISED -		SCALE:					
PLOT DATE = 8/15/2011		DATE -	REVISED -		SHEET NO. OF SHEETS	STA.	TO STA.			
ILLINOIS FED. AID PROJECT										CONTRACT NO. 70706

**HOT-MIX ASPHALT & AGG SHOULDER CALCULATIONS**

		44000155	40600990	40603310	X4060637	40600100	40600300	48102100
		HMA SURF REM 1.5"	TEMPORARY RAMP	HMA SURF. CSE. 1.5"	HMA FG LVL BIND 0.75"	BIT. MAT'L PRIME COAT	AGG MAT'L PRIME COAT	AGG WEDGE SHOULDERS TYPE B
STA	STA	SQ YD	SQ YD	TON	TON	GALLON	TON	TON
523+19.97	527+48.00	1426.8	20.0	119.9	59.9	142.7	2.9	21.6
527+68.00	696+50.30	56274.3	20.0	4727.0	2363.5	5627.4	112.6	850.9
696+50.30	708+42.90	3975.3		356.2	178.1	424.0	8.5	60.1
708+42.90	732+38.09	7983.9		670.7	335.3	798.4	16.0	120.7
732+38.09	744+34.90	3989.4		335.1	167.6	398.9	8.0	60.3
744+34.90	745+27.50	308.7	20.0	25.9	13.0	30.9	0.6	4.7
748+02.50	774+32.30	8766.0	20.0	736.3	368.2	876.6	17.5	132.5
774+32.30	837+40.63	21027.8	20.0	1766.3	883.2	2102.8	42.1	324.7
<b>ACTUAL TOTAL</b>		103752.15	100.00	8737.39	4368.8	10401.74	208.08	1575.45
<b>USE TOTAL</b>		103752	100*	8738	4369	10,402	208	1576*

\*SEE INCIDENTAL SCHEDULE FOR ADDITIONAL QUANTITY

**SURVEY MARKERS**

STATION	O/S	O/S DIR.	COMMENTS	XZ193300	Z0070202
				SURVEY MARKER, TYPE 1(SPECIAL)	SURVEY MARKER VAULT
				EACH	EACH
523+60.79	0.000	CL	PT	1	
697+73.92			PC	1	
707+23.29			PT	1	
719+03.61			POT	1	
733+57.68			PC	1	
743+14.40			PT	1	
758+52.44			POT	1	
836+04.90			POT	1	
836+24.90			POT	1	
0+996.462			SC		1
0+996.462	3.3'		SC		1
1+000			POT	1	
<b>TOTALS</b>				10	2

**CULVERT REPAIR ITEMS**

LOCATION		542A1093 PIPE CUVERT CL A, TY 2, 48"	20800150 TRENCH BACKFILL	X5427600 REM & RELOC END SECT	28100205 STONE RIPRAP CL A3
STATION	O/S	FOOT	CU YD	EACH	TON
705+66	LT	8.0	2.9	1.0	15
<b>ACTUAL TOTAL</b>		8.0	2.9	1.0	15
<b>USE TOTAL</b>		8.0	3.0	1.0	15

**INCIDENTAL ITEMS**

LOCATION		TYPE	MATERIALS	BACK LENGTH FOOT	40600982	40600990	40800010	40800030	40800050	48102100
					HMA SURFACE REMOVAL (BUTT JOINT) SQ YD	TEMPORARY RAMP SQ YD	BITUMINIOUS MATERIAL (PRIME COAT) GALLON	AGGREGATE (PRIME COAT) TON	INCIDENTAL HMA SURFACE TON	AGG WEDGE SHOULDER (ENTRANCES) TON
531+70.00	RT.	CE	HMA	10.00	20.1		2.01	0.04	2.53	
537+54.00	RT.	FE	HMA	3.00	8.3		0.83	0.02	1.04	0.50
537+63.00	LT.	FE	HMA	3.00	8.3		0.83	0.02	1.04	0.50
547+25.00	LT.	FE	HMA	10.00	8.3		0.83	0.02	1.04	0.50
550+85.00	RT.	PE	HMA	10.00	20.1		2.01	0.04	2.53	
555+39.00	LT.	FE	HMA	3.00	8.3		0.83	0.02	1.04	0.50
559+60.00	RT.	FE	HMA	3.00	8.3		0.83	0.02	1.04	0.50
560+59.00	RT.	SIDE ROAD	HMA		154.8	20.0	15.48	0.31	19.50	
560+59.00	LT.	SIDE ROAD	HMA		148.7	20.0	14.87	0.30	18.73	
561+41.00	LT.	FE	HMA	3.00	8.3		0.83	0.02	1.04	0.50
575+58.00	RT.	PE & MB	HMA	10.00	38.2		3.82	0.08	4.80	
577+36.00	RT.	PE	HMA	10.00	20.1		2.01	0.04	2.53	
580+90.00	LT.	FE	HMA	3.00	8.3		0.83	0.02	1.04	0.50
584+13.00	LT.	PE	HMA	10.00	20.1		2.01	0.04	5.53	
585+65.00	RT.	MB	HMA	6.00	30.0		3.00	0.06	3.78	0.50
586+90.00	RT.	MB	HMA	6.00	30.0		3.00	0.06	3.78	
587+09.00	LT.	PE	HMA	10.00	20.1		2.01	0.04	2.53	
587+22.00	LT.	PE	HMA	10.00	20.1		2.01	0.04	2.53	
594+06.00	LT.	FE	HMA	3.00	8.3		0.83	0.02	1.04	0.50
608+35.00	LT.	FE	HMA	3.00	8.3		0.83	0.02	1.04	0.50
613+15.00	RT.	FE	HMA	3.00	8.3		0.83	0.02	1.04	0.50
613+80.00	LT.	SIDE ROAD	HMA		148.5	20.0	14.85	0.30	18.71	
613+81.00	RT.	SIDE ROAD	HMA		155.1	20.0	15.51	0.31	19.54	
616+55.00	LT.	FE	HMA	3.00	8.3		0.83	0.02	1.04	0.50
618+40.00	RT.	FE	HMA	3.00	8.3		0.83	0.02	1.04	0.50
623+75.00	LT.	PE	HMA	10.00	20.1		2.01	0.04	2.53	
623+75.00	RT.	MB	HMA	6.00	30.0		3.00	0.06	3.78	
627+16.00	LT.	FE	HMA	3.00	8.3		0.83	0.02	1.04	0.50
633+68.00	LT.	FE	HMA	3.00	8.3		0.83	0.20	1.04	0.50
635+13.00	RT.	FE	HMA	3.00	8.3		0.83	0.20	1.04	0.50
640+60.00	RT.	FE	HMA	3.00	8.3		0.83	0.20	1.04	0.50
640+78.00	RT.	FE	HMA	3.00	8.3		0.83	0.20	1.04	0.50
<b>TABLE 1 TOTAL:</b>					1017.10	80.00	101.71	2.82	131.01	9.07



INCIDENTAL ITEMS (CONT'D)

LOCATION		TYPE	MATERIALS	BACK LENGTH FOOT	40600982	40600990	40800010	40800030	40800050	48102100
STATION	OFFSET				HMA SURFACE REMOVAL (BUTT JOINT) SQ YD	TEMPORARY RAMP SQ YD	BITUMINIOUS MATERIAL (PRIME COAT) GALLON	AGGREGATE (PRIME COAT) TON	INCIDENTAL HMA SURFACE TON	AGG WEDGE SHOULDER (ENTRANCES) TON
649+70	RT.	FE.	HMA	3.00	8.30		0.83	0.02	1.05	0.34
649+85	LT.	FE.	HMA	3.00	8.30		0.83	0.02	1.05	0.63
660+12	RT.	FE.	HMA	3.00	8.30		0.83	0.02	1.05	
666+88	RT.	SIDE ROAD	HMA		282.10	20.00	28.21	0.56	35.54	0.39
666+88	LT.	SIDE ROAD	HMA		299.00	20.00	29.90	0.60	37.67	0.34
688+65	RT.	PE. & MB.	HMA	6.00	38.20		3.82	0.08	4.81	
690+01	RT.	PE.	HMA	10.00	20.10		2.10	0.04	2.53	0.80
693+40	LT.	FE.	HMA	3.00	8.30		0.83	0.02	1.05	0.30
698+25	LT.	FE.	HMA	3.00	8.30		0.83	0.02	1.05	
699+04	LT.	PE.	HMA	10.00	20.10		2.10	0.04	2.53	0.29
703+00	RT.	FE.	HMA	3.00	8.30		0.83	0.02	1.05	0.48
714+04	RT.	FE.	HMA	3.00	8.30		0.83	0.02	1.05	0.20
725+65	RT.	FE.	HMA	3.00	8.30		0.83	0.02	1.05	0.39
727+19	LT.	SIDE ROAD	HMA		245.40	20.00	24.50	0.49	30.92	0.23
727+19	LT.	SIDE ROAD	HMA		216.20	20.00	21.62	0.43	27.24	
743+00	LT.	PE.	HMA	10.00	20.10		2.10	0.04	2.53	0.18
757+00	RT.	PE. & MB.	HMA	6.00	38.20		3.82	0.08	4.81	
757+49	LT.	FE.	HMA	3.00	8.30		0.83	0.02	1.05	
768+10	LT.	FE.	HMA	3.00	8.30		0.83	0.02	1.05	
768+10	RT.	FE.	HMA	3.00	8.30		0.83	0.02	1.05	0.27
770+28	RT.	SIDE ROAD	HMA		132.30	20.00	13.23	0.26	16.67	0.21
770+29	LT.	PE. & MB.	HMA	6.00	38.20		3.82	0.08	4.81	0.50
779+27	LT.	FE.	HMA	3.00	8.30		0.83	0.02	1.05	0.60
779+27	RT.	FE.	HMA	3.00	8.30		0.83	0.02	1.05	
797+20	LT.	PE.	HMA	10.00	20.10		2.10	0.04	2.53	0.34
815+53	RT.	PE.	HMA	10.00	20.10		2.10	0.04	2.53	0.25
815+53	LT.	MB.	HMA	6.00	30.00		3.00	0.06	3.78	0.23
818+25	LT.	FE.	HMA	3.00	8.30		0.83	0.02	1.05	0.43
1+000	LT.	SIDE ROAD	HMA		325.80	20.00	32.58	0.65	41.05	
TABLE 1 TOTAL:					1017.10	80.00	101.71	2.82	131.01	9.07
TABLE 2 TOTAL:					2879.20	200.00	288.33	6.59	234.65	8.43
INCIDENTAL ITEMS TOTALS:					3896	280	390	9	366	18

CLASS D PATCHING

STATION	OFFSET	LENGTH	WIDTH	7"			STATION	OFFSET	LENGTH	WIDTH	7"		
				44201789 TYPE II	44201733 TYPE III	44201735 TYPE IV					44201789 TYPE II	44201733 TYPE III	44201735 TYPE IV
541+62	SB	20	15			44.4	775+28	NB	6	15	10.0		
541+62	NB	15	15			25.0	775+50	NB	6	15	10.0		
541+99	NB	8	15	13.3			775+50	SB	6	15	10.0		
541+99	SB	8	15	13.3			775+95	NB	6	15	10.0		
543+80	NB	6	15	10.0			775+95	SB	6	15	10.0		
554+63	NB	10	15		16.7		776+14	NB	6	15	10.0		
574+79	NB	12	15		20.0		776+14	SB	6	15	10.0		
574+79	SB	12	15		20.0		777+37	NB	6	15	10.0		
575+30	NB	6	15	10.0			777+37	SB	6	15	10.0		
575+30	SB	6	15	10.0			778+17	NB	6	15	10.0		
580+15	NB	20	15			33.3	778+17	SB	6	15	10.0		
580+15	SB	20	15			33.3	780+18	NB	6	15	10.0		
595+45	NB	6	15	10.0			780+18	SB	6	15	10.0		
595+45	SB	6	15	10.0			781+06	NB	6	15	10.0		
605+01	NB	15	15			25.0	781+06	SB	6	15	10.0		
605+01	SB	15	15			25.0	781+27	NB	10	15		16.7	
613+53	NB	12	15		20.0		782+31	NB	6	15	10.0		
613+53	SB	12	15		20.0		782+31	SB	6	15	10.0		
619+38	NB	6	15	10.0			784+65	NB	6	15	10.0		
624+00	NB	25	15			41.7	784+65	SB	6	15	10.0		
631+44	NB	30	15			50.0	785+58	NB	12	15		20.0	
631+44	SB	30	15			50.0	785+58	SB	12	15		20.0	
637+31	NB	35	15			58.3	789+10	NB	10	15		16.7	
637+31	SB	35	15			58.3	789+10	SB	10	15		16.7	
638+77	NB	6	15	10.0			795+88	NB	6	15	10.0		
638+77	SB	6	15	10.0			795+88	SB	6	15	10.0		
645+09	NB	20	15			33.3	802+38	NB	25	15			41.7
645+09	SB	20	15			33.3	802+38	SB	12	15		20.0	
655+41	NB	20	15			33.3	806+26	NB	10	15		16.7	
662+70	NB	20	15			33.3	806+26	SB	10	15		16.7	
662+70	SB	20	15			33.3	810+79	NB	12	15		20.0	
674+99	NB	20	15			33.3	810+79	SB	12	15		20.0	
683+05	NB	20	15			33.3	811+63	NB	20	15			33.3
683+05	SB	20	15			33.3	811+63	SB	20	15			33.3
685+07	NB	30	15			50.0	823+13	NB	20	15			33.3
685+07	SB	30	15			50.0	823+13	SB	20	15			33.3
728+63	NB	8	15	13.3			825+22	NB	10	15		16.7	
728+63	SB	8	15	13.3			832+08	NB	10	15		16.7	
731+39	NB	20	15			33.3	832+08	SB	10	15		16.7	
731+39	SB	20	15			33.3	833+03	NB	30	15			50.0
732+53	NB	20	15			33.3	833+03	SB	10	15		16.7	
732+53	SB	20	15			33.3	833+66	NB	6	15	10.0		
762+31	SB	30	15			50.0	833+66	SB	6	15	10.0		
764+71	NB	20	15			33.3	833+99	NB	6	15	10.0		
764+71	SB	20	15			33.3	833+99	SB	6	15	10.0		
767+67	SB	10	15		16.7		835+85	NB	6	15	10.0		
772+43	SB	8	15	13.3			835+85	SB	6	15	10.0		
772+61	SB	6	15	10.0									
773+23	NB	20	15			33.3							
774+06	NB	6	15	10.0									
774+06	SB	6	15	10.0									
TOTALS											446.7	363.3	1319.4
USE											447.0	364.0	1320.0

FILE NAME =	USER NAME = bucklesjj	DESIGNED -	REVISED -	<b>STATE OF ILLINOIS DEPARTMENT OF TRANSPORTATION</b>	<b>SCHEDULE OF QUANTITIES</b>			F.A.P. RTE.	SECTION	COUNTY	TOTAL SHEETS	SHEET NO.	
c:\pwork\pwork\dot\bucklesjj\d0180660\0570706-shit-Schedule.dgn		DRAWN -	REVISED -					326	129R5-3	Champaign	24	10	
	PLOT SCALE = 40.0000' / in.	CHECKED -	REVISED -		SCALE:			SHEET NO. OF	SHEETS	STA.	TO STA.	CONTRACT NO. 70706	
	PLOT DATE = 8/15/2011	DATE -	REVISED -		ILLINOIS FED. AID PROJECT								

**GUARDRAIL ITEMS**

LOCATION				63000025	63000005	63000001	63000003	63100169	63100167	78201000	78200420
STA	TO	STA	O/S	SPBGR ATTACH TO STR FOOT	SPBGR, TY B FOOT	SPBGR, TY A 6 FT POSTS	SPBGR, TY A 9 FT POSTS	TR BAR TRM T1 (SPL FLR) EACH	TR BAR TRM T1 (SPL TAN) EACH	TERMINAL MARKER D- A EACH	GUARDRAIL MKR, TYPE B EACH
525+79+28	TO	525+91.78	LT						1	1	
525+91.78	TO	526+91.78	LT			100					
526+91.78	TO	527+16.78	LT		25						
527+16.78	TO	527+38.78	LT	22							4
527+38.78	TO	527+63.78	LT		25						
527+63.78	TO	529+38.78	LT			175					
529+38.78	TO	529+51.28	LT					1	1		
525+04.28	TO	525+16.78	RT					1	1		
525+16.78	TO	526+91.78	RT			175					
526+91.78	TO	527+16.78	RT		25						
527+16.78	TO	527+38.78	RT	22							4
527+38.78	TO	527+63.78	RT		25						
527+63.78	TO	528+63.7	RT			100					
528+63.70	TO	528+76.20	RT					1	1		
616+12.00	TO	616+24.50	LT					1	1		
616+24.50	TO	616+82.00	LT			62.5					
616+82.00	TO	617+07.00	LT		25						
617+07.00	TO	617+38.25	LT	31.25							4
617+38.25	TO	617+63.25	LT		25						
617+63.25	TO	618+75.75	LT			112.5					
618+75.75	TO	618+88.25	LT					1	1		
616+25.75	TO	616+38.25	RT					1	1		
616+38.25	TO	617+50.75	RT			112.5					
617+50.75	TO	617+75.75	RT		25						
617+75.75	TO	618+07.00	RT	31.25							4
618+07.00	TO	618+32.00	RT		25						
618+32.00	TO	618+94.50	RT			62.5					
618+94.50	TO	619+07.00	RT					1	1		
715+57.30	TO	715+69.80	RT						1	1	
715+69.80	TO	717+32.30	RT			162.5					
717+32.30	TO	717+57.30	RT		25						
717+57.30	TO	717+66.70	RT	9.4							4
717+66.70	TO	717+91.70	RT		25						
717+91.70	TO	718+79.20	RT			87.5					
718+79.20	TO	718+91.70	RT					1	1		
716+32.30	TO	716+44.80	LT						1	1	
716+44.80	TO	717+32.30	LT			87.5					
717+32.30	TO	717+57.30	LT		25						
717+57.30	TO	717+66.70	LT	9.4							4
717+66.70	TO	717+91.70	LT		25						
717+91.70	TO	719+54.20	LT			162.5					
719+54.20	TO	719+66.70	LT					1	1		

25000200	25000400	25000500	25000600	25100630	28000250
SEEDING CLASS II ACRE	NITROGEN FERT NUTR POUND	PHOSPHORUS FERT NUTR POUND	POTASSIUM FERT NUTR POUND	EROSION CONTROL BLANKET SQ YD	TEMP EROS CONTR SEED POUND
0.0156	1.406	1.406	1.406	35.625	1.562
0.0156	1.406	1.406	1.406	35.625	1.562
0.0156	1.406	1.406	1.406	35.625	1.562
0.0156	1.406	1.406	1.406	35.625	1.562
0.0156	1.406	1.406	1.406	35.625	1.562
0.0156	1.406	1.406	1.406	35.625	1.562
0.0156	1.406	1.406	1.406	35.625	1.562
0.0156	1.406	1.406	1.406	35.625	1.562
0.0156	1.406	1.406	1.406	35.625	1.562
0.0156	1.406	1.406	1.406	35.625	1.562
0.0156	1.406	1.406	1.406	35.625	1.562

**GUARDRAIL ITEMS CONTINUED**

LOCATION				63000025	63000005	63000001	63000003	63100169	63100167	78201000	78200420
STA	TO	STA	O/S	SPBGR ATTACH TO STR	SPBGR, TY B	SPBGR, TY A 6 FT POSTS	SPBGR, TY A 9 FT POSTS	TR BAR TRM T1 (SPL FLR)	TR BAR TRM T1 (SPL TAN)	TERMINAL MARKER D- A	GUARDRAIL MKR, TYPE B
743+26.5	TO	743+39.00	LT						1	1	
743+39.00	TO	744+14.00	LT			75					
748+16.27	TO	757+16.27	LT				900				12
757+16.27	TO	757+28.77	LT						1	1	
742+51.50	TO	742+64.00	RT						1	1	
742+64.00	TO	744+14.00	RT								
748+16.27	TO	756+53.77	RT				837.5				12
756+53.77	TO	756+66.27	RT						1	1	
<b>TOTALS:</b>				125.3	300	1262.5	1737.5	4	12	16	48
<b>USE:</b>				126	300	1263	1738	4	12	16	48

25000200	25000400	25000500	25000600	25100630	28000250
SEEDING CLASS II	NITROGEN FERT NUTR	PHOSPHORUSFE RT NUTR	POTASSIUM FERT NUTR	EROSION CONTROL BLANKET	TEMP EROS CONTR SEED
0.0156	1.406	1.406	1.406	35.625	1.562
0.0156	1.406	1.406	1.406	35.625	1.562
0.0156	1.406	1.406	1.406	35.625	1.562
0.0156	1.406	1.406	1.406	35.625	1.562
0.25	22.5	22.5	22.5	570	24.9
0.25	23	23	23	570	25

**GUARDRAIL REMOVAL ITEMS**

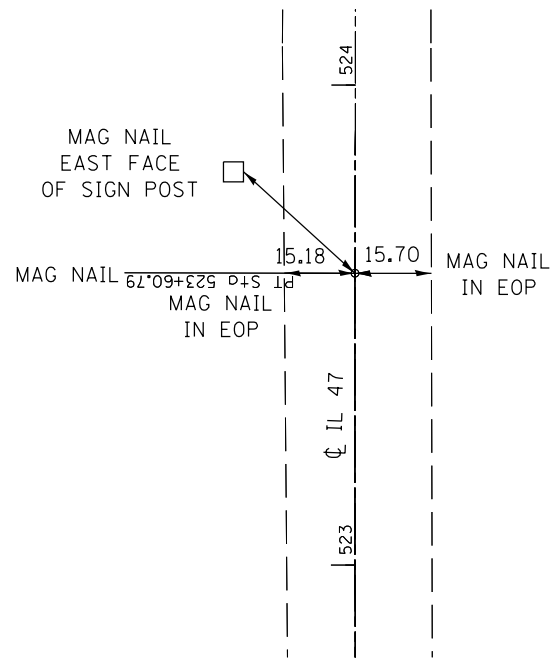
LOCATION				63200310
STA	TO	STA	O/S	GUARDRAIL REMOVAL
525+88.78	TO	527+16.78	LT	128
527+16.78	TO	527+38.78	LT	22
527+38.78	TO	529+41.78	LT	203
525+13.78	TO	527+16.78	RT	203
527+16.78	TO	527+38.78	RT	22
527+38.78	TO	528+66.78	RT	128
616+07.00	TO	617+07.00	LT	100
617+07.00	TO	617+38.25	LT	31.25
617+38.25	TO	619+07.00	LT	168.75
615+65.50	TO	617+37.38	RT	171.88
617+37.38	TO	617+68.63	RT	31.25
617+68.63	TO	618+90.50	RT	121.87
716+80.16	TO	717+57.3	LT	77.14
717+57.3	TO	717+47.9	LT	9.4
717+47.9	TO	718+43.25	LT	77.14
716+80.16	TO	717+57.3	RT	77.14
717+57.3	TO	717+47.9	RT	9.4
717+47.9	TO	718+43.25	RT	77.14
743+26.50	TO	744+14.00	LT	75
748+16.27	TO	757+31.50	LT	915.23
742+47.75	TO	744+14.00	RT	166.25
748+16.27	TO	756+68.50	RT	852.23
<b>Total:</b>				3667.07
<b>Use:</b>				3668

**PAVEMENT MARKING ITEMS**

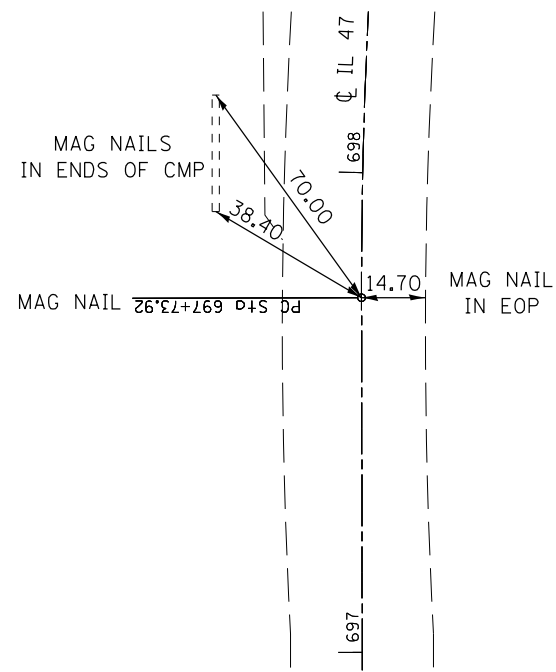
LENGTH	STA	STA	78001110				70300100	70301000
			PAINT PAVEMENT MARKING LINE, 4"				SHORT-TERM PAVEMENT MARKINGS	
			EDGE LINE (WHITE)	CENTERLINE SKIP DASH (YELLOW)	NB NO PASSING (YELLOW)	SB NO PASSING (YELLOW)	CENTERLINE	WORK ZONE PAVT MKG REM
FOOT	FOOT	FOOT	FOOT	FOOT	FOOT	SQ FT		
3690.33	523+19.97	560+10.00	7380.00	922.58	0.00	0.00	1006.45	111.20
90.00	560+10.00	561+00.00	0.00	22.58	0.00	0.00	24.54	2.73
5234.00	561+00.00	613+34.00	10468.00	1308.50	0.00	0.00	1427.45	158.60
90.00	613+34.00	614+24.00	0.00	22.58	0.00	0.00	24.54	2.73
5201.00	614+24.00	666+25.00	10402.00	1300.25	0.00	0.00	1418.45	157.60
126.00	666+25.00	667+51.00	0.00	31.50	0.00	0.00	34.36	3.80
2250.00	667+51.00	690+01.00	4500.00	562.50	0.00	0.00	613.64	68.20
1279.00	690+01.00	702+80.00	2258.00	319.75	1279.00	0.00	348.82	38.80
376.00	699+04.00	702+80.00	0.00	0.00	0.00	376.00	0.00	0.00
292.00	702+80.00	705+72.00	292.00	73.00	0.00	0.00	79.64	8.80
2052.00	705+72.00	726+24.00	4104.00	513.00	0.00	0.00	559.64	62.20
1109.00	726+24.00	737+33.00	2218.00	277.25	275.00	0.00	302.45	33.60
475.00	737+33.00	742+08.00	950.00	0.00	475.00	475.00	129.55	14.40
1109.00	742+08.00	753+17.00	2218.00	277.25	1109.00	0.00	302.45	33.60
8423.63	753+17.00	837+40.63	16847.26	2105.90	0.00	0.00	2297.18	255.24
<b>TOTAL:</b>			61637.26	7736.64	3138.00	851.00	8569.16	951.50
<b>USE:</b>			61638	7737	3138	851	8570	952

ITEM	ACTUAL TOTAL
PAINT PAVEMENT MARKING LINE, 4"	73364
SHORT TERM PAVEMENT MARKINGS	8570
WORK ZONE PAVEMENT MARKING REMOVAL	952

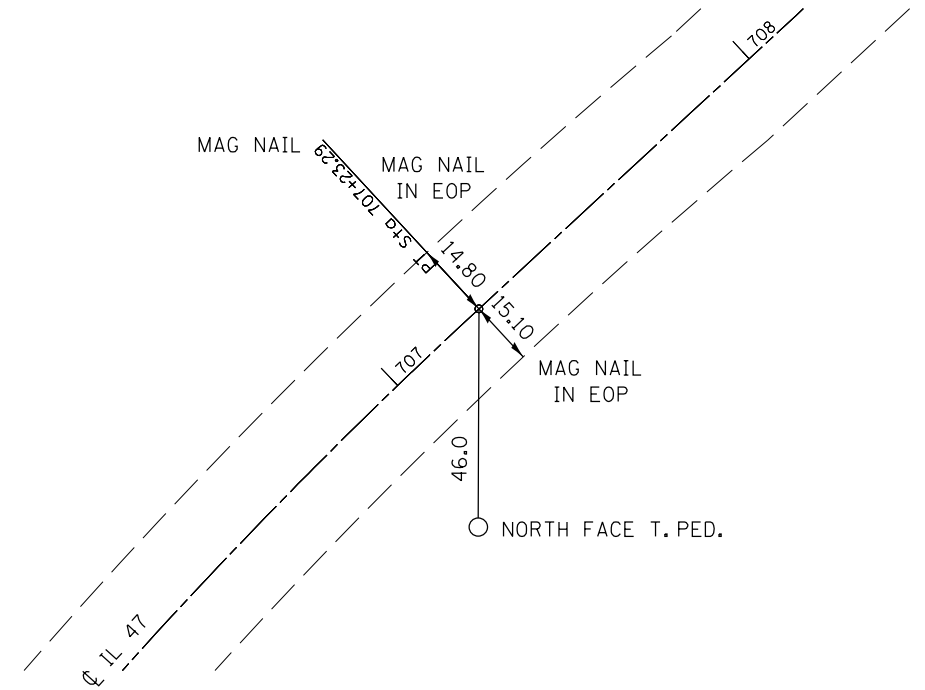
**P.T. #69**  
**STA. 523 + 60.79**



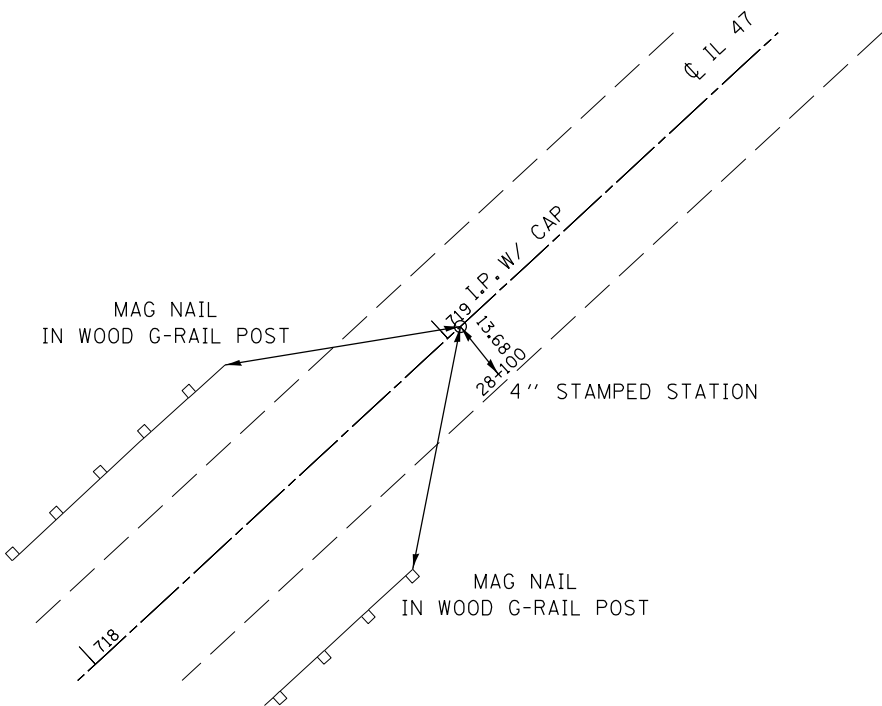
**P.C. #76**  
**STA. 697 + 73.92**



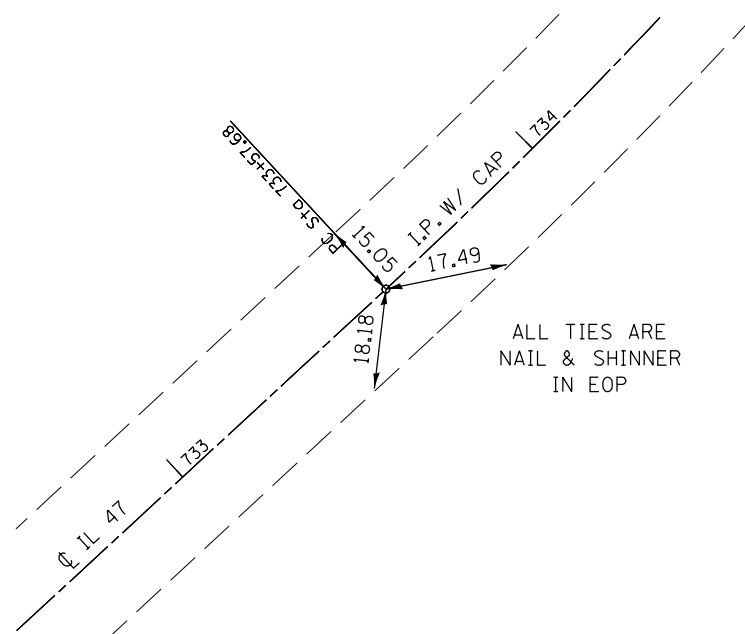
**P.T. #78**  
**STA. 707 + 23.29**



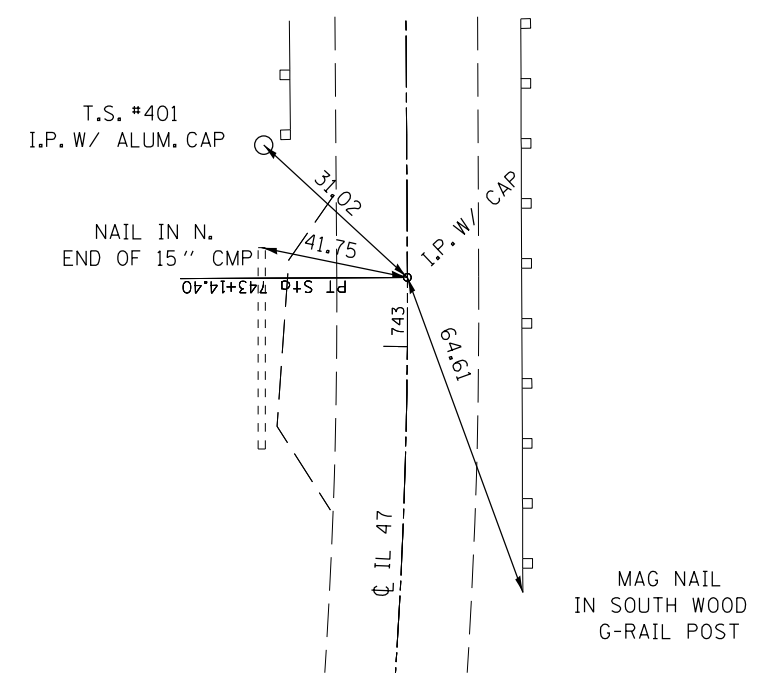
**P.O.T. #39**  
**STA. 719 + 03.61**



**P.C. #32**  
**STA. 733 + 57.68**



**P.T. #34**  
**STA. 743 + 14.40**



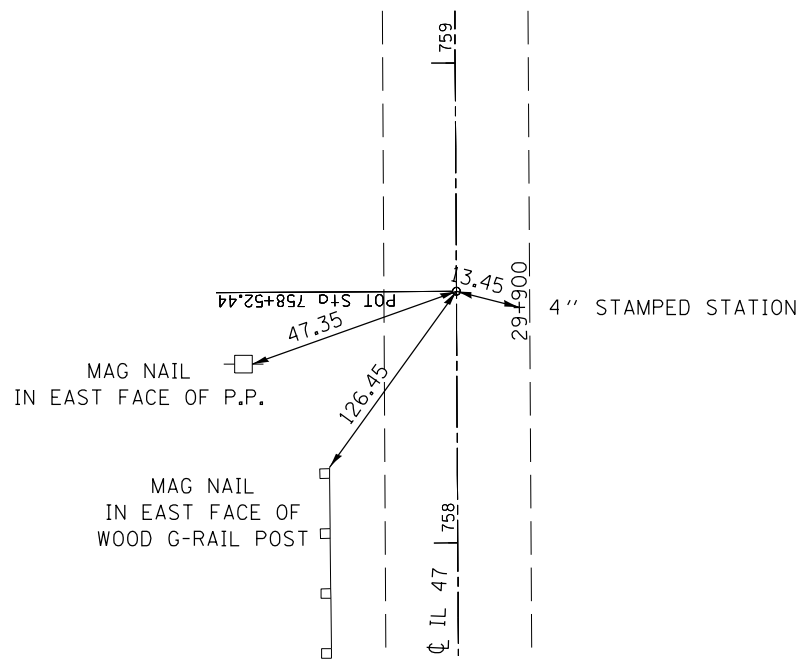
FILE NAME =	USER NAME = bucklesjj	DESIGNED -	REVISED -
ei:\pwork\pwork\dot\bucklesjj\d0180660\0570706-shr-ATB.dgn		DRAWN -	REVISED -
	PLOT SCALE = 40.0000' / in.	CHECKED -	REVISED -
	PLOT DATE = 8/15/2011	DATE -	REVISED -

**STATE OF ILLINOIS**  
**DEPARTMENT OF TRANSPORTATION**

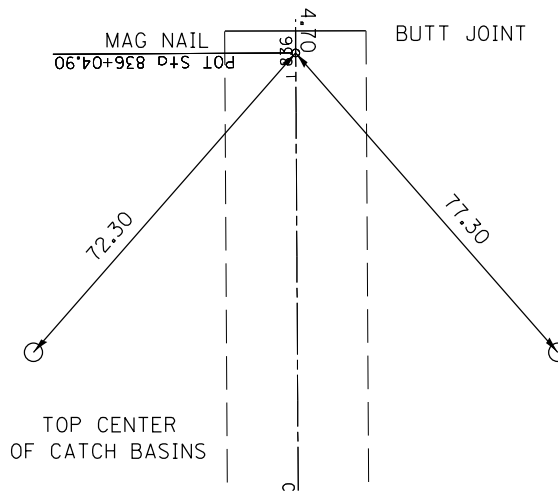
TIE POINTS			
SCALE:	SHEET NO. OF	SHEETS	STA. TO STA.

F.A.P. RE.	SECTION	COUNTY	TOTAL SHEETS	SHEET NO.
326	129R5-3	Champaign	24	13
CONTRACT NO. 70706				
ILLINOIS FED. AID PROJECT				

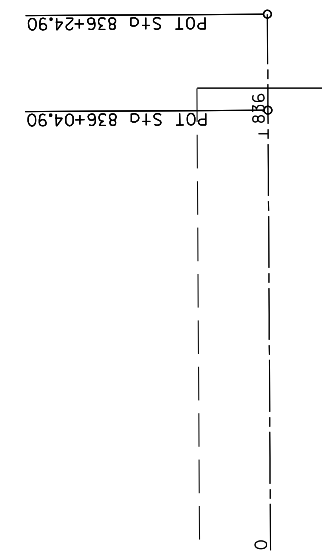
**P.O.T. #35**  
**STA. 758 + 52.44**



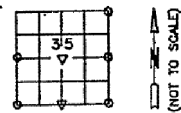
**P.O.T. #38**  
**STA. 836 + 04.90**



**P.O.T. #53**  
**STA. 836 + 24.90**  
**( NOT SET )**



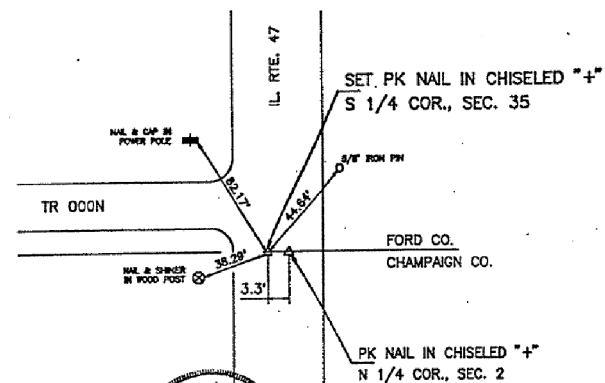
**"MONUMENT RECORD"**  
LAND SURVEY MONUMENTS  
SITUATED IN  
SECTION 35 TWP 23 NORTH  
RANGE 7 EAST 3rd P.M.  
FORD COUNTY, IL.



# 199758  
4/12/95

COPY

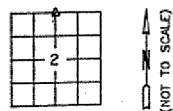
RECOVERY TIE DRAWING  
(SHOW MONUMENT DESCRIPTION, ACCESSORIES & KNOWN HISTORY AT EACH RECORD CORNER WITH TIES)



I, WILLIAM J. COOMBE, HEREBY CERTIFY THAT THIS DOCUMENT WAS PREPARED UNDER MY DIRECTION IN ACCORDANCE WITH THE LAND SURVEYOR MONUMENT ACT CHAPTER 765 ILCS 220.  
William J. Coombe 3-7-95  
IL PLS NO. 2730 DATE

SHEET 1 OF 4  
**STA. 0+996.462**

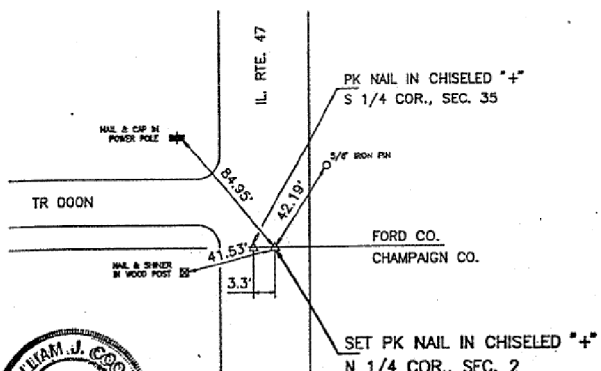
**"MONUMENT RECORD"**  
LAND SURVEY MONUMENTS  
SITUATED IN  
SECTION 2 TWP 22 NORTH  
RANGE 7 EAST 3rd P.M.  
CHAMPAIGN COUNTY, IL.



95R 6625

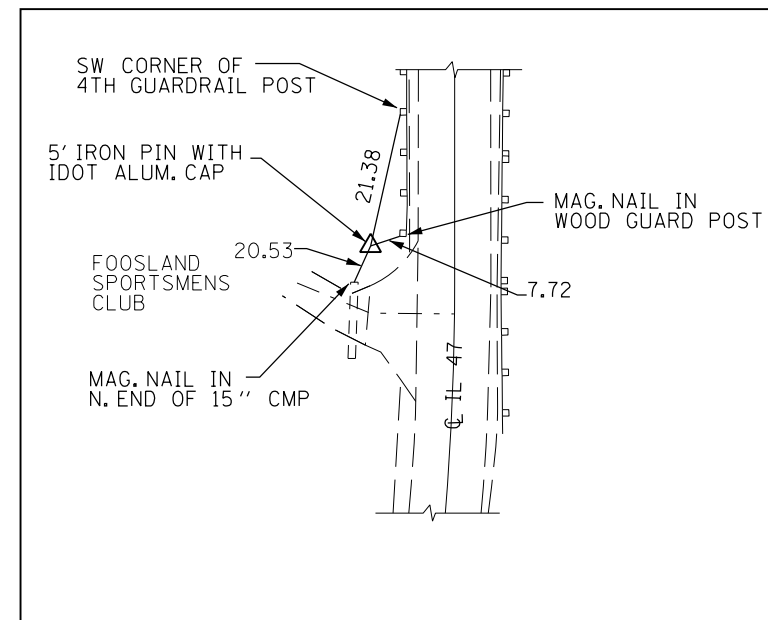
Book 2186 COPY  
Pg 868

RECOVERY TIE DRAWING  
(SHOW MONUMENT DESCRIPTION, ACCESSORIES & KNOWN HISTORY AT EACH RECORD CORNER WITH TIES)



I, WILLIAM J. COOMBE, HEREBY CERTIFY THAT THIS DOCUMENT WAS PREPARED UNDER MY DIRECTION IN ACCORDANCE WITH THE LAND SURVEYOR MONUMENT ACT CHAPTER 765 ILCS 220.  
William J. Coombe 3-6-95  
IL PLS NO. 2730 DATE

SHEET 1 OF 4  
**STA. 0+996.462**



TS #401 & BM 4685-1  
STA. 743+34.00  
OFF. 27.02 LT.  
N 100,005.60  
E 99,999.70

FILE NAME =	USER NAME = bucklesjj	DESIGNED -	REVISED -
et:\pw\work\p\dot\bucklesjj\d0180660\0570706-shr-ATB.dgn		DRAWN -	REVISED -
	PLOT SCALE = 40.0000' / in.	CHECKED -	REVISED -
	PLOT DATE = 8/15/2011	DATE -	REVISED -

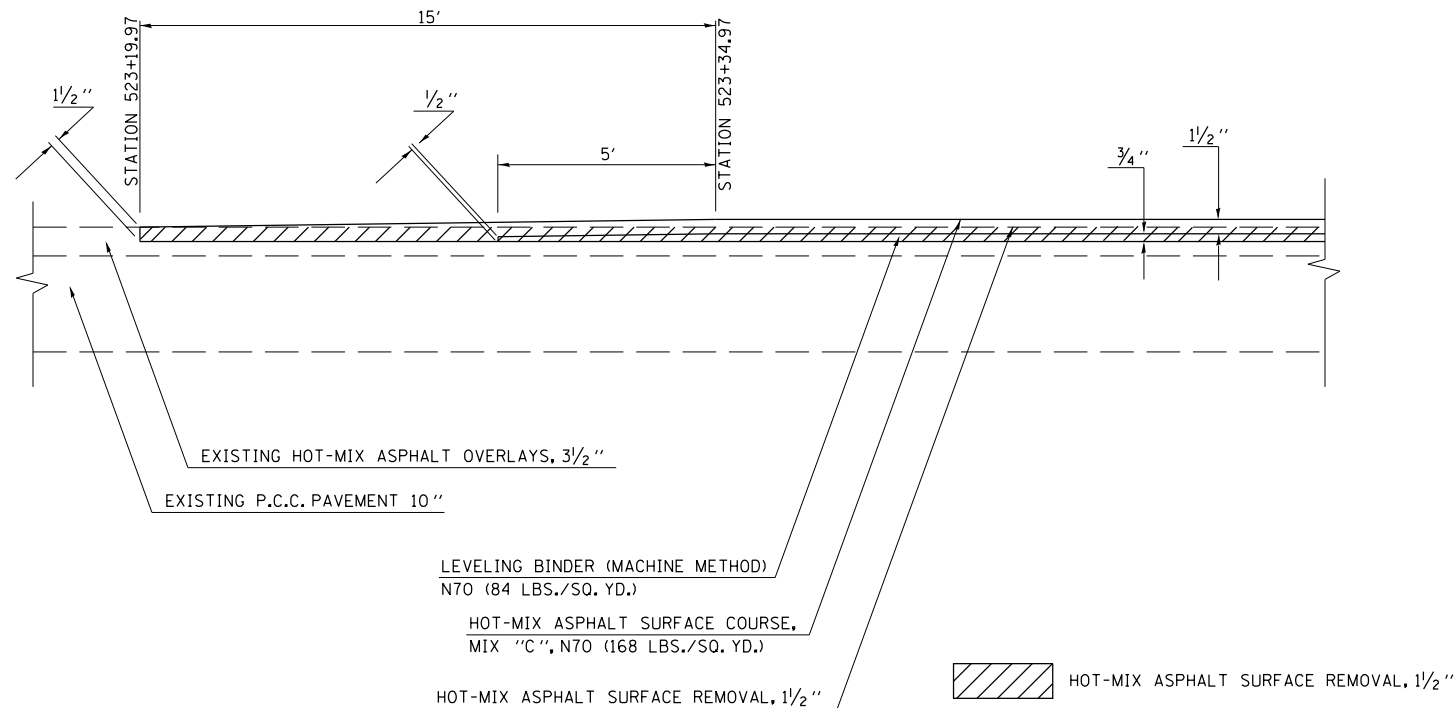
STATE OF ILLINOIS  
DEPARTMENT OF TRANSPORTATION

TIE POINTS

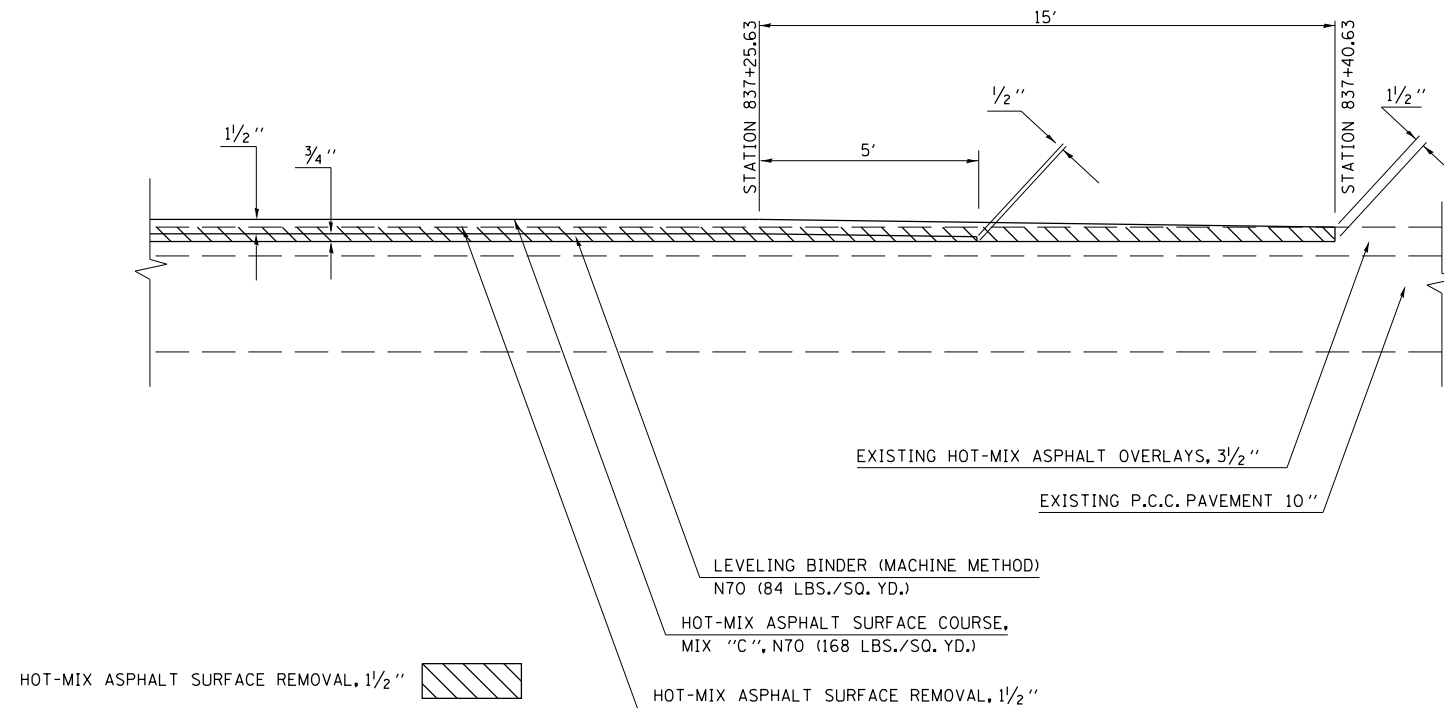
SCALE: SHEET NO. OF SHEETS STA. TO STA.

F.A.P. RTE.	SECTION	COUNTY	TOTAL SHEETS	SHEET NO.
326	129R5-3	Champaign	24	14
CONTRACT NO. 70706				
ILLINOIS FED. AID PROJECT				

**HOT-MIX ASPHALT SURFACE REMOVAL DETAIL  
AT BEGINNING OF PROJECT  
STATION 523+19.97**

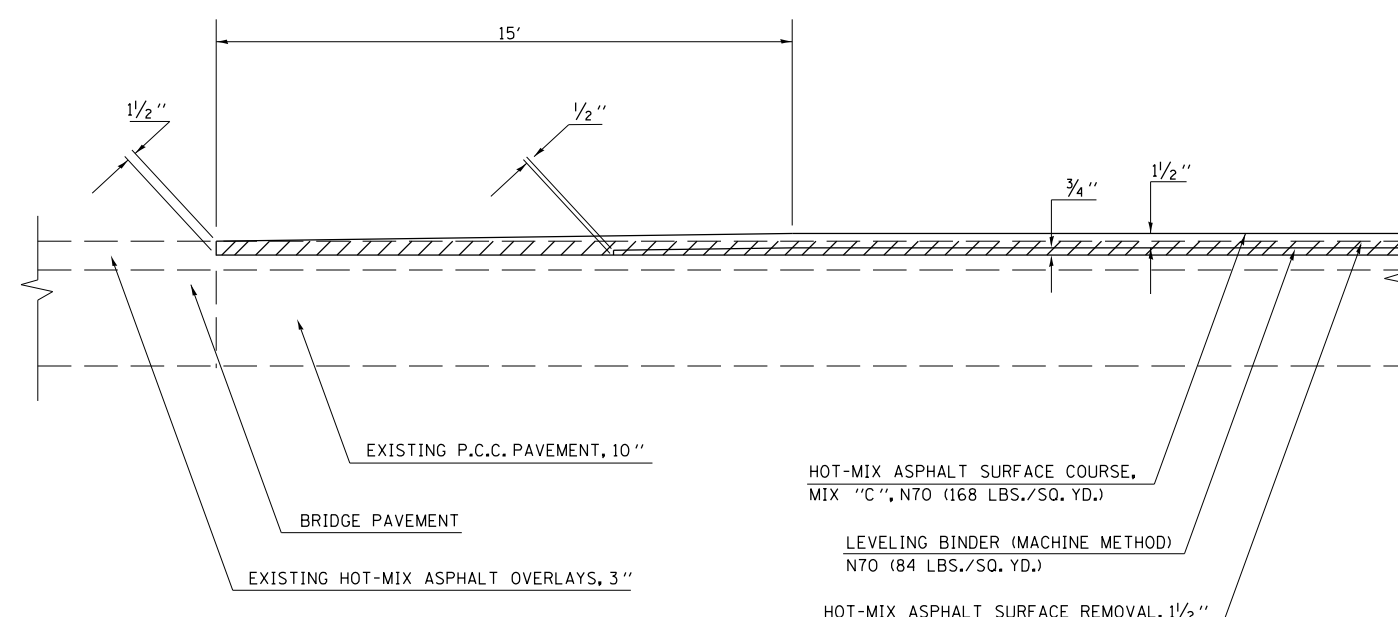
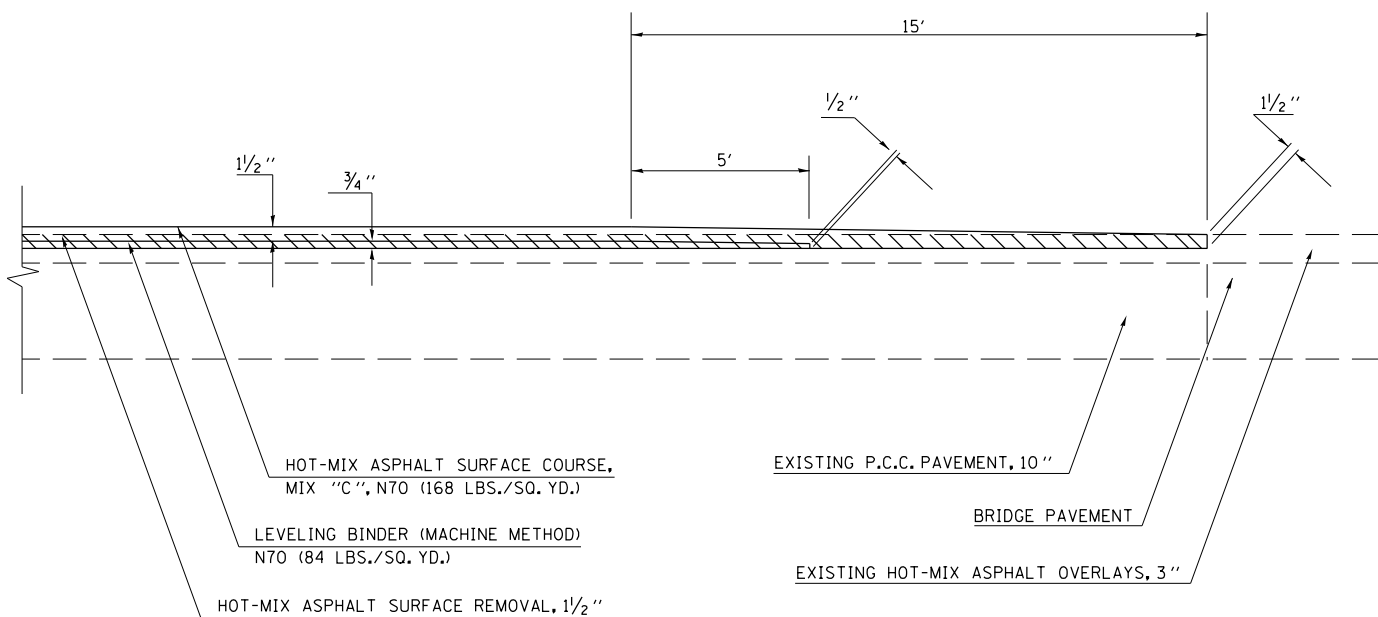


**HOT-MIX ASPHALT SURFACE REMOVAL DETAIL  
AT END OF PROJECT  
STATION 837+40.63**



**HOT-MIX ASPHALT SURFACE REMOVAL DETAIL  
AT STRUCTURE NO. 010-0053  
& STRUCTURE NO. 010-0281**

**BRIDGE OMISSIONS**  
S.N. 010-0053 STA. 527+48.00 TO 527+68.00  
S.N. 010-0281 STA. 745+27.50 TO 749+43.00



HOT-MIX ASPHALT SURFACE REMOVAL, 1/2"

Note: All dimensions are in INCHES  
(millimeters) unless otherwise shown.

FILE NAME =	USER NAME = bucklesjj	DESIGNED -	REVISED -
ei:\pw\work\p\idot\bucklesjj\d0180660\0570706-shr-Details.dgn		DRAWN -	REVISED -
		CHECKED -	REVISED -
		DATE -	REVISED -

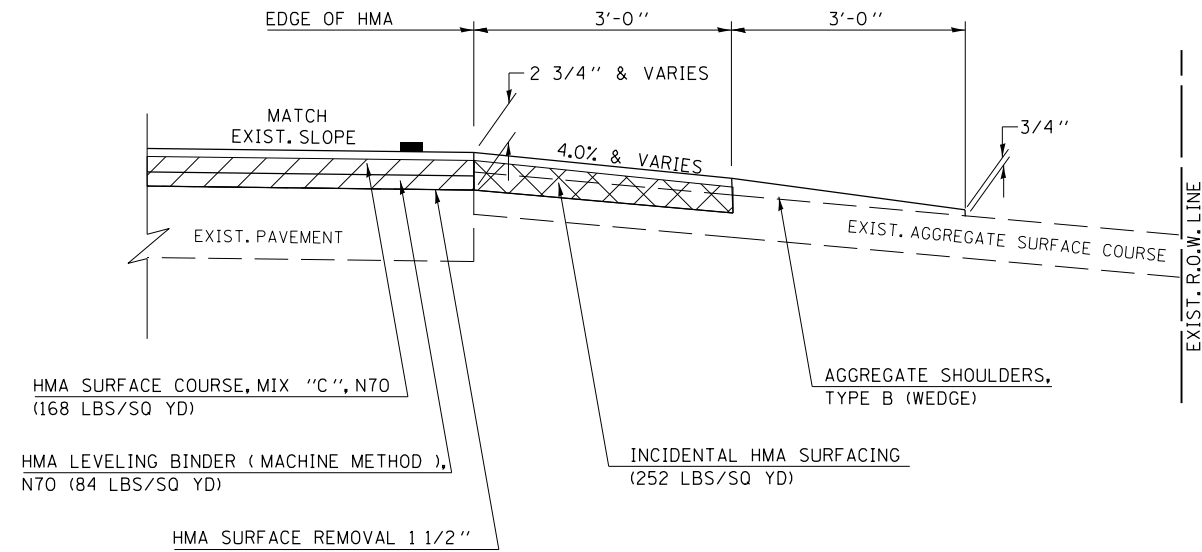
**STATE OF ILLINOIS  
DEPARTMENT OF TRANSPORTATION**

**HMA SURFACE REMOVAL DETAILS**

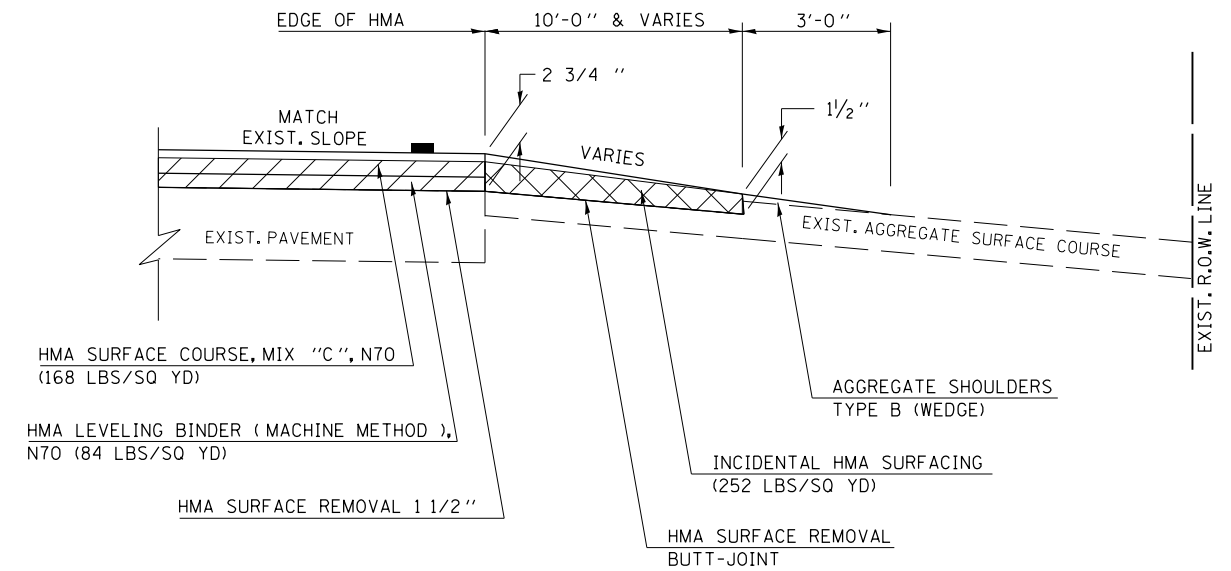
SCALE: SHEET NO. OF SHEETS STA. TO STA.

F.A.P. RTE.	SECTION	COUNTY	TOTAL SHEETS	SHEET NO.
326	129R5-3	Champaign	24	15
				CONTRACT NO. 70706
ILLINOIS FED. AID PROJECT				

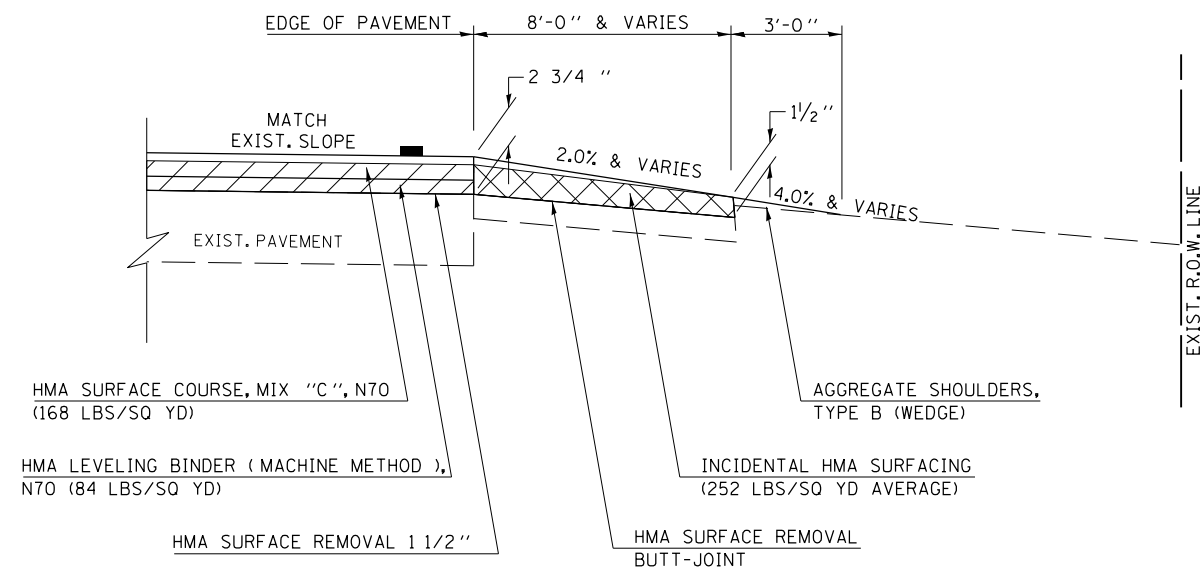
**FIELD ENTRANCES**



**PRIVATE AND COMMERCIAL ENTRANCES**



**MAILBOX TURNOUTS**



**GENERAL NOTES FOR INCIDENTAL ENTRANCES AND MAILBOX TURNOUTS**

1. THE EXISTING SURFACE SHALL BE PREPARED IN ACCORDANCE WITH SECTION 408 OF THE STANDARD SPECIFICATIONS.
2. AGGREGATE BASE COURSE, TYPE B, 6" (150) MIN. SHALL BE USED WHERE IN THE OPINION OF THE ENGINEER THERE IS NOT SUFFICIENT BASE MATERIAL FOR THE PROPOSED MAILBOX TURNOUTS. THIS MATERIAL SHALL GENERALLY BE USED TO WIDEN ALL EXISTING MAILBOX TURNOUTS OR TO CONSTRUCT NEW MAILBOX TURNOUTS WHERE NONE NOW EXISTS.
3. ANY NECESSARY WORK BEHIND THE INCIDENTAL HMA SURFACING SHALL BE AS SHOWN IN THE PLANS AND/OR AS DIRECTED BY THE ENGINEER.
4. EXISTING ENTRANCES OF AGGREGATE OR EARTH SHALL NOT RECEIVE A NEW HMA APRON WITHOUT PROPER APPROVAL THROUGH THE BUREAU OF OPERATIONS "POLICY ON PERMITS FOR ACCESS DRIVEWAYS TO STATE HIGHWAYS.

Note: All dimensions are in INCHES (millimeters) unless otherwise shown.

FILE NAME =	USER NAME = bucklesjj	DESIGNED -	REVISED -
et:\pw\work\p\dot\bucklesjj\0180660\0570706-sh1-Details.dgn		DRAWN -	REVISED -
	PLOT SCALE = 40.0000' / in.	CHECKED -	REVISED -
	PLOT DATE = 8/15/2011	DATE -	REVISED -

**STATE OF ILLINOIS  
DEPARTMENT OF TRANSPORTATION**

**INCIDENTAL DETAILS**

SCALE: SHEET NO. OF SHEETS STA. TO STA.

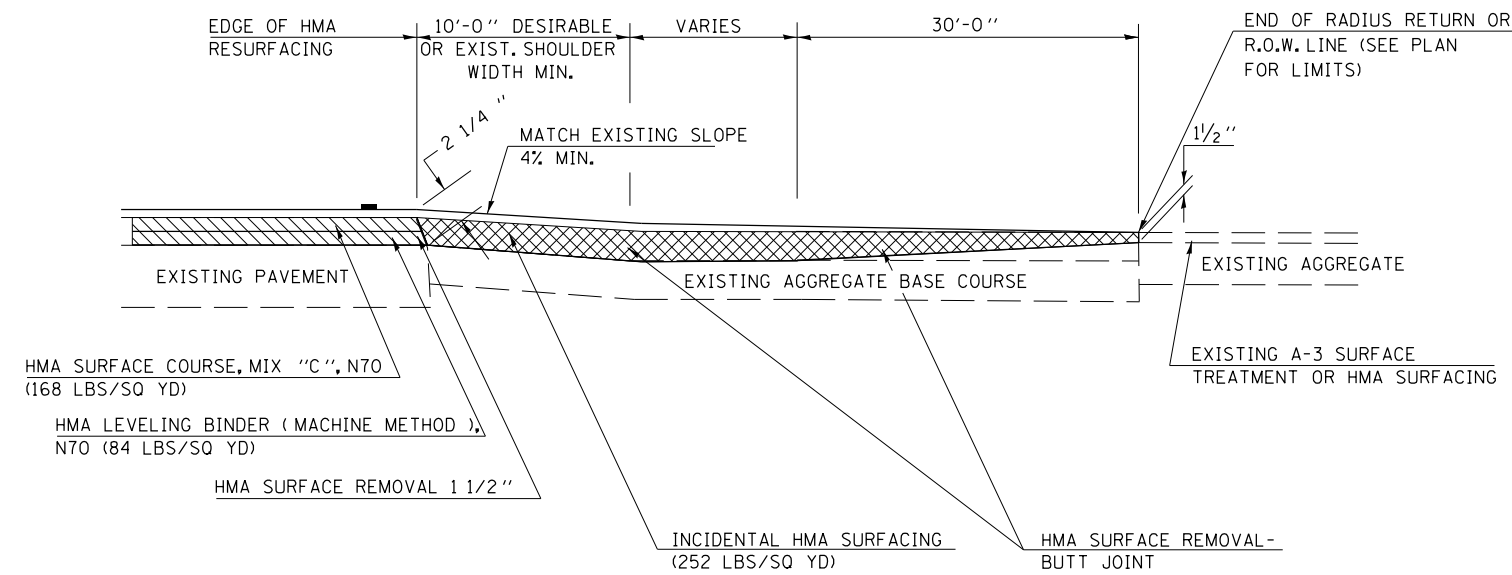
F.A.P. RTE.	SECTION	COUNTY	TOTAL SHEETS	SHEET NO.
326	129R5-3	Champaign	24	16
			CONTRACT NO. 70706	
ILLINOIS FED. AID PROJECT				



**GENERAL NOTES FOR INCIDENTAL SIDEROADS AND SIDE STREETS**

1. THE EXISTING SURFACE SHALL BE PREPARED IN ACCORDANCE WITH SECTION 408 OF THE STANDARD SPECIFICATIONS
2. PROPOSED SIDEROAD GRADES SHALL NOT BE AS SHOWN IN THE PLANS.
3. AGGREGATE SHOULDERS, TYPE B WILL BE WRAPPED AROUND THE SIDEROAD RETURNS. TAPER WIDTH FROM 3' ALONG MAINLINE TO 2' AT BACK OF RETURN.

**SIDEROADS (RURAL)**



Note: All dimensions are in INCHES (millimeters) unless otherwise shown.

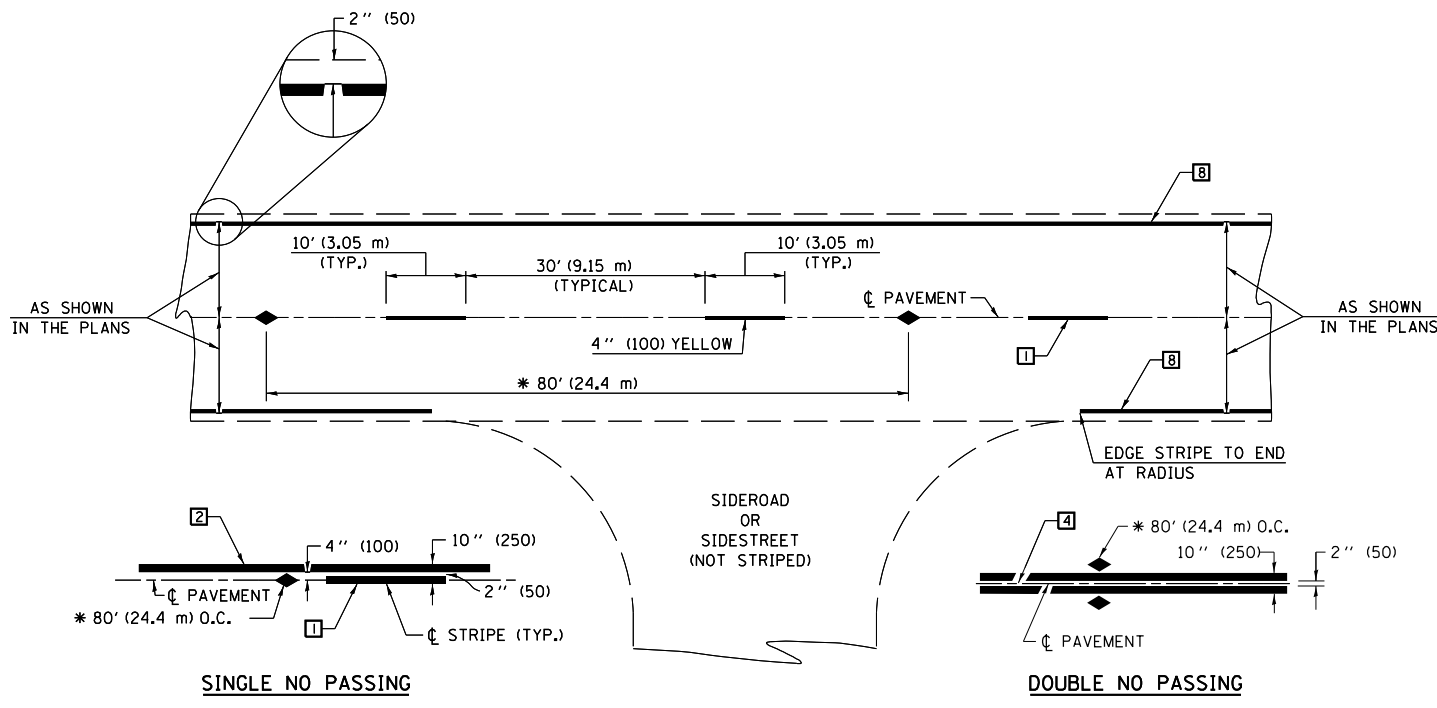
FILE NAME =	USER NAME = bucklesjj	DESIGNED -	REVISED -
ei:\pwork\pwork\pwork\bucklesjj\0180660\0570706-sh1-Details.dgn		DRAWN -	REVISED -
	PLOT SCALE = 40.0000' / in.	CHECKED -	REVISED -
	PLOT DATE = 8/15/2011	DATE -	REVISED -

**STATE OF ILLINOIS  
DEPARTMENT OF TRANSPORTATION**

**INCIDENTAL DETAILS**

SCALE: SHEET NO. OF SHEETS STA. TO STA.

F.A.P. RTE.	SECTION	COUNTY	TOTAL SHEETS	SHEET NO.
326	129RS-3	Champaign	24	17
			CONTRACT NO. 70706	
ILLINOIS FED. AID PROJECT				



\* REDUCE TO 40' (12.2 m) O.C. ON CURVES WITH POSTED OR ADVISORY SPEEDS OF 45 mph (70 km/h) OR LESS.

**TWO LANE/TWO WAY**

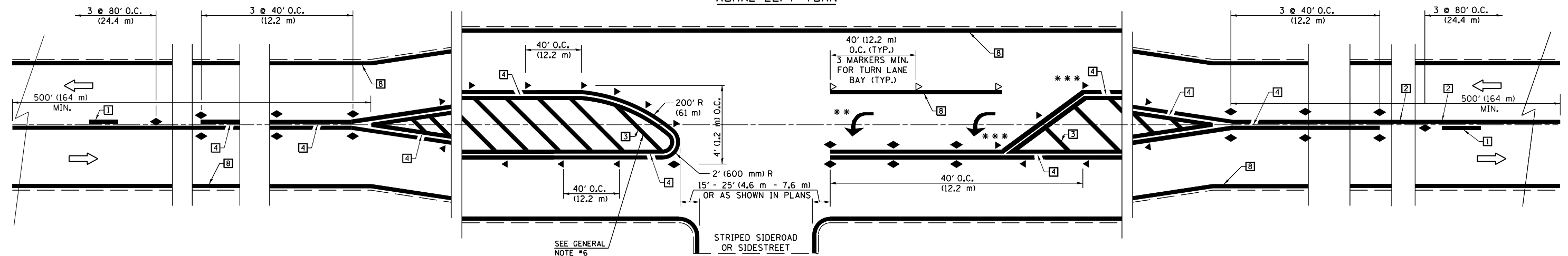
**TYPICAL PAVEMENT MARKING LEGEND**

- 1 4" (100) SKIP-DASH (YELLOW)
- 2 4" (100) SOLID (YELLOW)
- 3 12" (300) DIAGONAL (YELLOW)
- 4 4" (100) DOUBLE YELLOW (NARROW)
- 5 RESERVED
- 6 RESERVED
- 7 4" (100) SKIP-DASH (WHITE)
- 8 4" (100) SOLID (WHITE)
- 9 12" (300) DIAGONAL (WHITE)
- 10 6" (150) SOLID (WHITE)
- 11 24" (600) STOP BAR (WHITE)
- 12 8" (200) SOLID (WHITE)
- 13 4" (100) LANE LINE EXTENSIONS (WHITE)
- 14 4" (100) PARKING WHITE

**TYPICAL PAVEMENT MARKERS LEGEND**

- ◆ TWO-WAY AMBER MARKER
- ▶ ONE-WAY AMBER MARKER
- ▷ ONE-WAY CRYSTAL MARKER

**RURAL LEFT TURN**

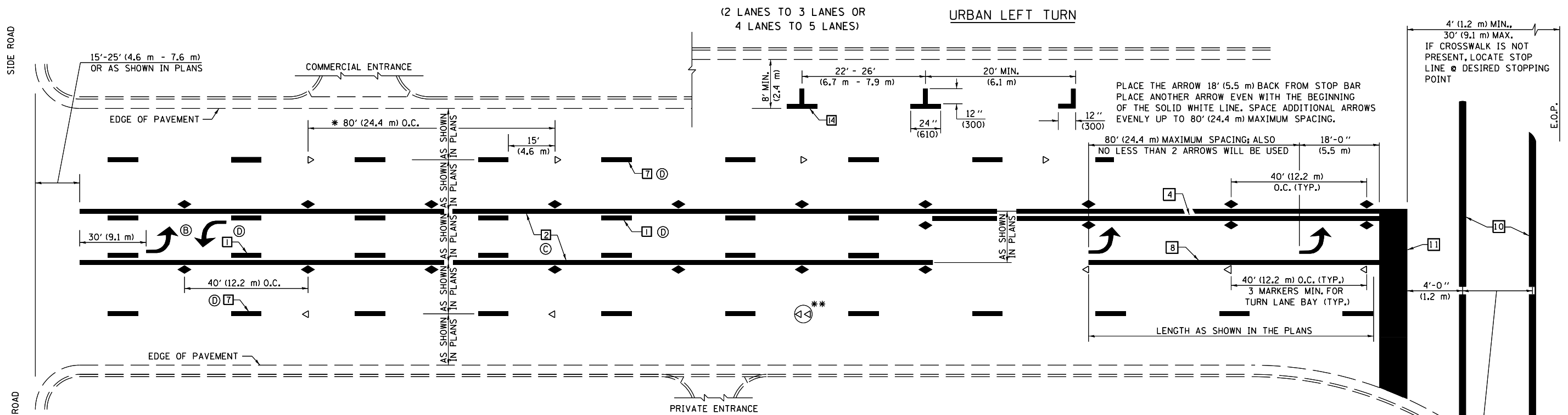


\*\*\* REDUCE SPACING IF NECESSARY TO ASSURE MARKERS AT CORNER POINTS.

\*\* TURN ARROWS SHALL BE PLACED AS SHOWN ON SHEET #2.

Note: All dimensions are in INCHES (millimeters) unless otherwise shown.

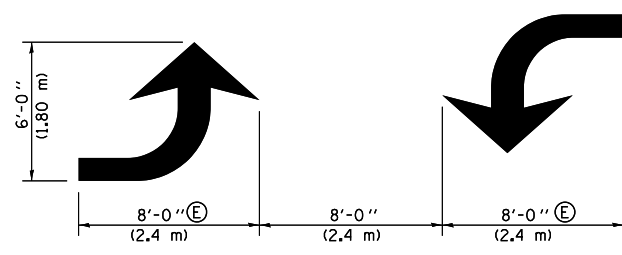
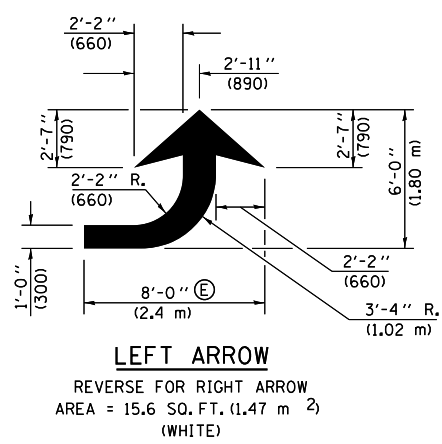
FILE NAME =	USER NAME = bucklesjj	DESIGNED -	REVISED -	<b>STATE OF ILLINOIS DEPARTMENT OF TRANSPORTATION</b>	<b>PAVEMENT MARKING AND MARKERS (RURAL &amp; URBAN APPLICATIONS)</b>			F.A.P. RTE.	SECTION	COUNTY	TOTAL SHEETS	SHEET NO.
ei:\pwork\pwork\dot\bucklesjj\d0180660\0570706-sh1-Details.dgn		DRAWN -	REVISED -					326	129RS-3	Champaign	24	18
PLOT SCALE = 40.0000' / in.		CHECKED -	REVISED -		CONTRACT NO. 70706							
PLOT DATE = 8/15/2011		DATE -	REVISED -		ILLINOIS FED. AID PROJECT							



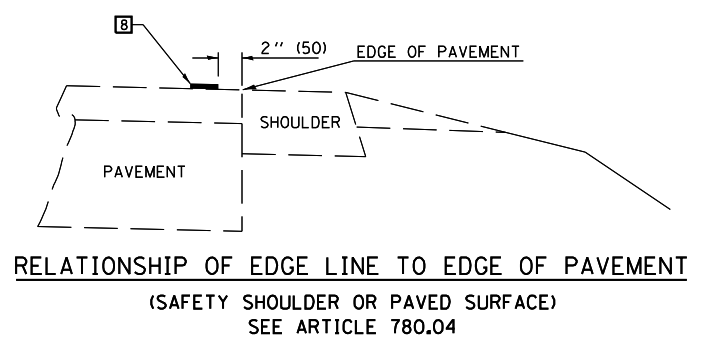
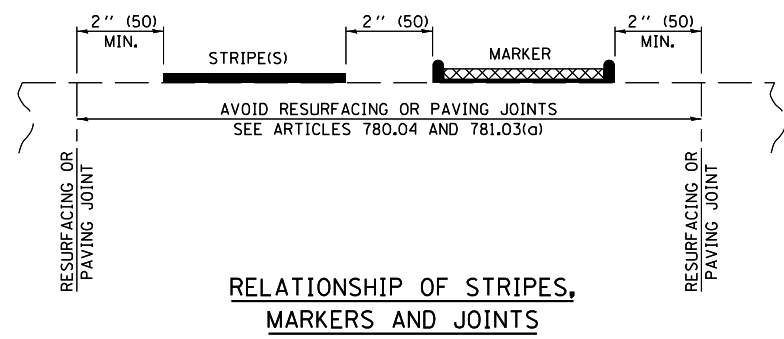
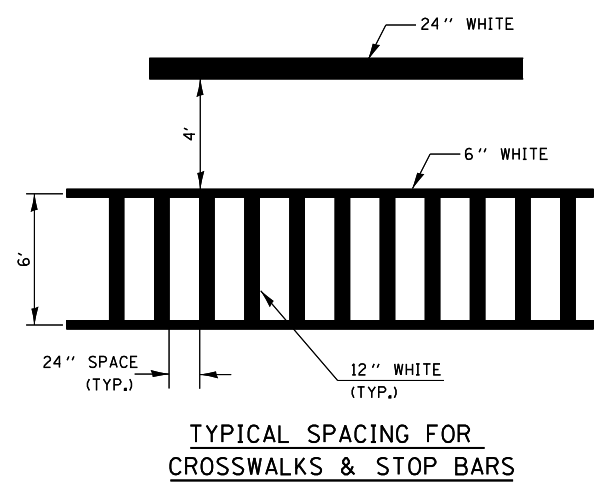
\* REDUCE TO 40 FEET (12.2 METERS) ON CENTER ON CURVES WHERE ADVISORY SPEEDS ARE 10 MPH (15 km/h) LOWER THAN POSTED SPEEDS.

\*\* DOUBLE LANE LINE MARKERS SHALL BE SPECIFIED AND SPACED AS SHOWN IN HIGHWAY STANDARD 781001 FOR MULTI-LANE DIVIDED AND UNDIVIDED HIGHWAYS.

- GENERAL NOTES:**
- ⓑ TURN ARROW PAIRS SHALL BE PLACED AT 250' (75 m) INTERVALS AND SHALL BE EVENLY SPACED BETWEEN BOTH ENDS OF THE BIDIRECTIONAL LEFT TURN LANE.
  - ⓒ THE SOLID YELLOW PAVEMENT MARKINGS [2] SHOULD GENERALLY START OR END NEAR THE RADIUS POINT OF EACH STREET RETURN EXCEPT WHERE ONE OR BOTH ENDS WOULD INCLUDE STOP BARS.
  - ⓓ THE SKIP-DASH PAVEMENT MARKINGS [1] OR [7] SHOULD BE CENTERED BETWEEN BOTH ENDS OF EACH CITY BLOCK AND SHALL BE PLACED SO THEY LINE UP ACROSS FROM EACH OTHER. SEE EXAMPLE ON SHEET 2 OF 3.
  - ⓔ USE LARGE ARROW SIZE FOR BOTH RURAL AND URBAN LOCATIONS. (SEE LAST PAGE OF SECTION 780x FOR SYMBOLS TABLE)



**BLOOMINGTON-NORMAL CITY LIMITS ONLY**



Note: All dimensions are in INCHES (millimeters) unless otherwise shown.

<b>DISTRICT 5 DETAIL NO. 7800AAA</b>			
F.A.P. RTE.	SECTION	COUNTY	TOTAL SHEETS
326	129RS-3	Champaign	24
			SHEET NO. 19
			CONTRACT NO. 70706
ILLINOIS FED. AID PROJECT			

FILE NAME =	USER NAME = bucklesjj	DESIGNED -	REVISED -
ei:\pw\work\p\dot\bucklesjj\d0180660\0570706-shd-Detail.dgn		DRAWN -	REVISED -
PLOT SCALE = 40.0000' / in.		CHECKED -	REVISED -
PLOT DATE = 8/15/2011		DATE -	REVISED -

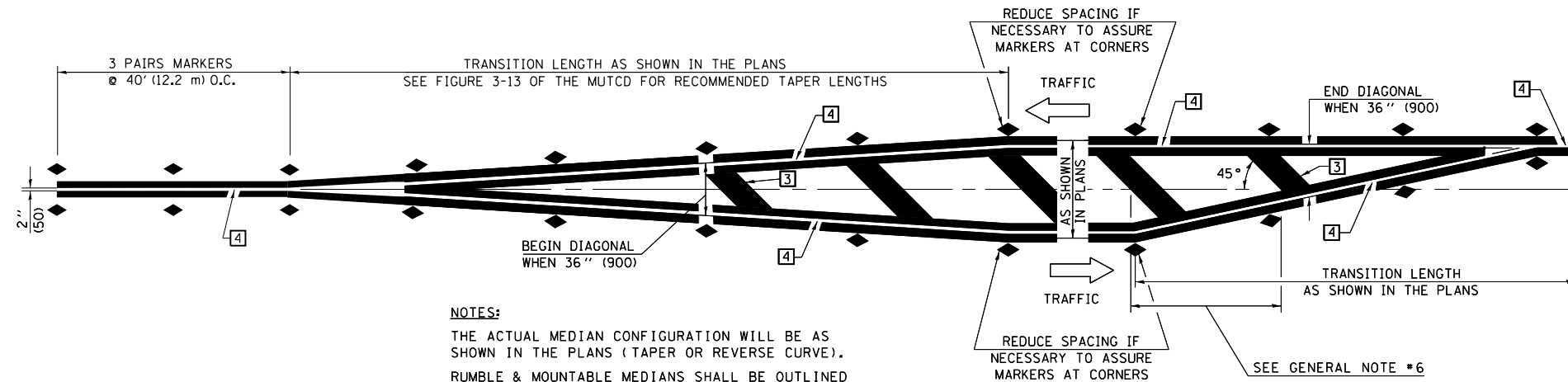
**STATE OF ILLINOIS  
 DEPARTMENT OF TRANSPORTATION**

**PAVEMENT MARKING AND MARKERS  
 (RURAL & URBAN APPLICATIONS)**

SCALE: SHEET NO. OF SHEETS STA. TO STA.

**GENERAL NOTES**

1. WHEN MEDIANS ARE PRESENT, PAVEMENT MARKINGS ARE TO BE PLACED ADJACENT TO MEDIANS.
2. SOME OF THE INFORMATION INCLUDED WITH THIS DETAIL MAY NOT BE APPLICABLE TO THIS IMPROVEMENT.
3. PAVEMENT MARKINGS ARE TO BE EXTENDED THROUGH OMISSIONS WHEN APPLICABLE.
4. A STRIPING KEY IS AVAILABLE ELSEWHERE AND SHALL BE SHOWN WHERE THE QUANTITIES ARE LISTED.
5. FINAL PAVEMENT MARKINGS SHALL BE IN PLACE PRIOR TO PLACING ANY RAISED REFLECTIVE PAVEMENT MARKERS.
6. THE FOLLOWING CRITERIA SHALL BE USED FOR SELECTING THE DIAGONAL PAVEMENT MARKING SPACING,
  - < 30 MPH USE 15' (< 50 km/h USE 4.5 m)
  - 30-45 MPH USE 20' (50-75 km/h USE 6.0 m)
  - > 45 MPH USE 30' (> 75 km/h USE 9.0 m)

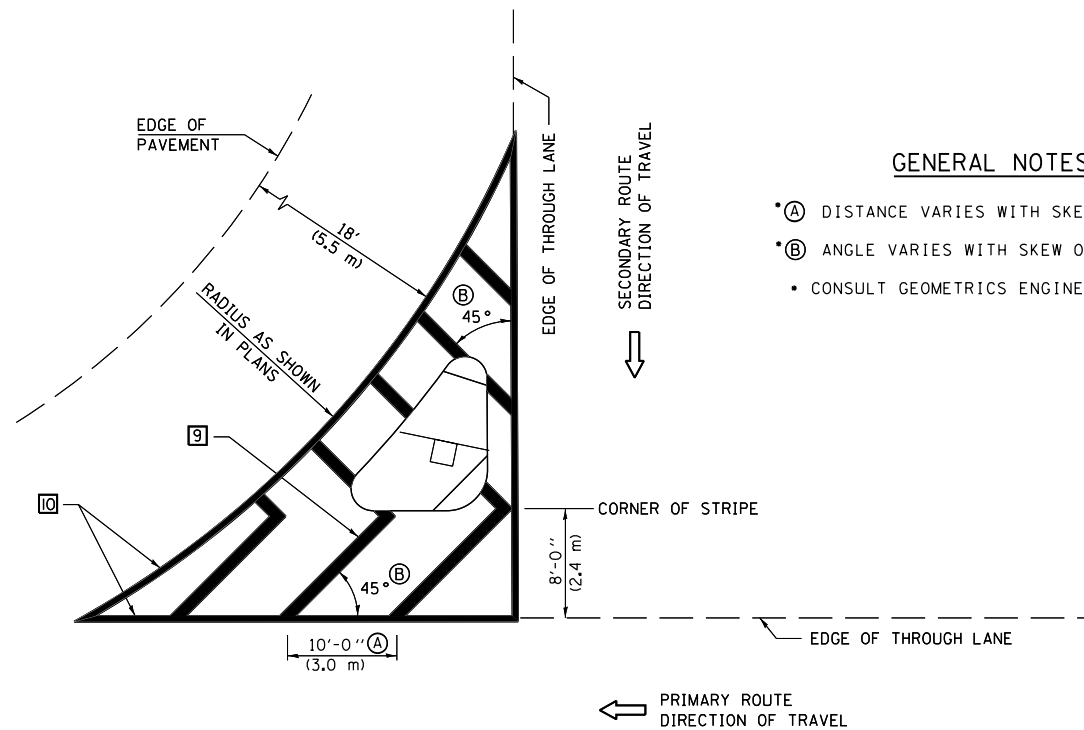


**NOTES:**  
 THE ACTUAL MEDIAN CONFIGURATION WILL BE AS SHOWN IN THE PLANS (TAPER OR REVERSE CURVE).  
 RUMBLE & MOUNTABLE MEDIANS SHALL BE OUTLINED WITH [2].

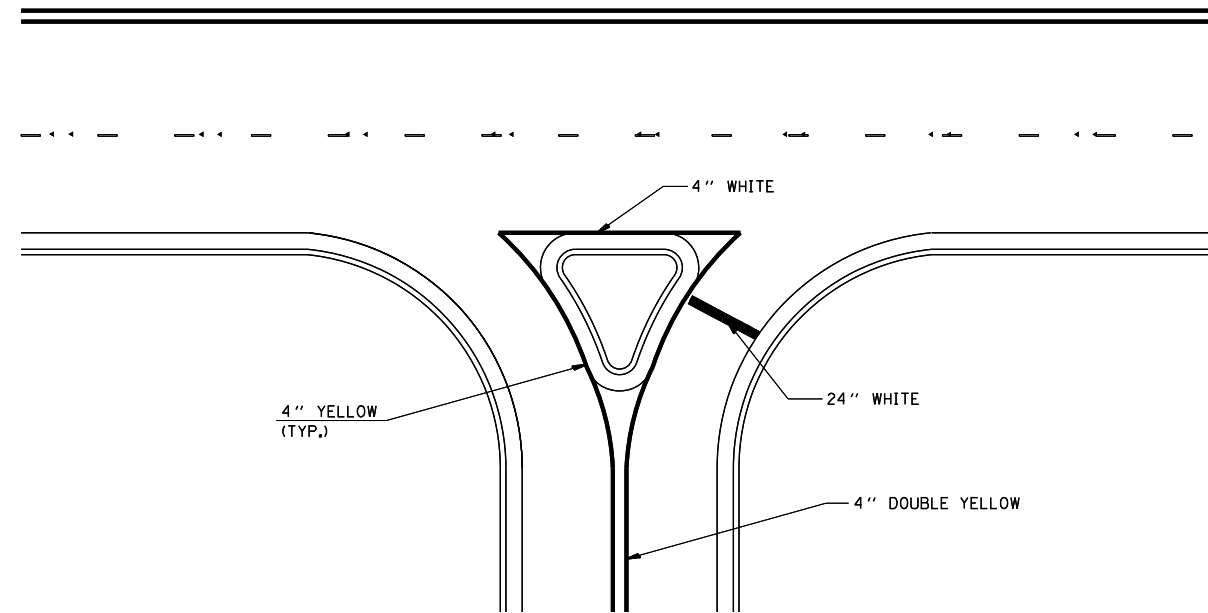
**TYPICAL MEDIAN TRANSITIONS**

**GENERAL NOTES**

- (A) DISTANCE VARIES WITH SKEW OF INTERSECTION.
- (B) ANGLE VARIES WITH SKEW OF INTERSECTION.
- CONSULT GEOMETRICS ENGINEER



**ISLAND**



**RIGHT IN - RIGHT OUT ACCESS**

Note: All dimensions are in INCHES (millimeters) unless otherwise shown.

**DISTRICT 5 DETAIL NO. 7800AAAA**

FILE NAME =	USER NAME = bucklesjj	DESIGNED -	REVISED -
et:\pwork\pwork\pwork\bucklesjj\d0180660\0570706-shd-Detail.dgn		DRAWN -	REVISED -
	PLOT SCALE = 40.0000' / in.	CHECKED -	REVISED -
	PLOT DATE = 8/15/2011	DATE -	REVISED -

**STATE OF ILLINOIS  
 DEPARTMENT OF TRANSPORTATION**

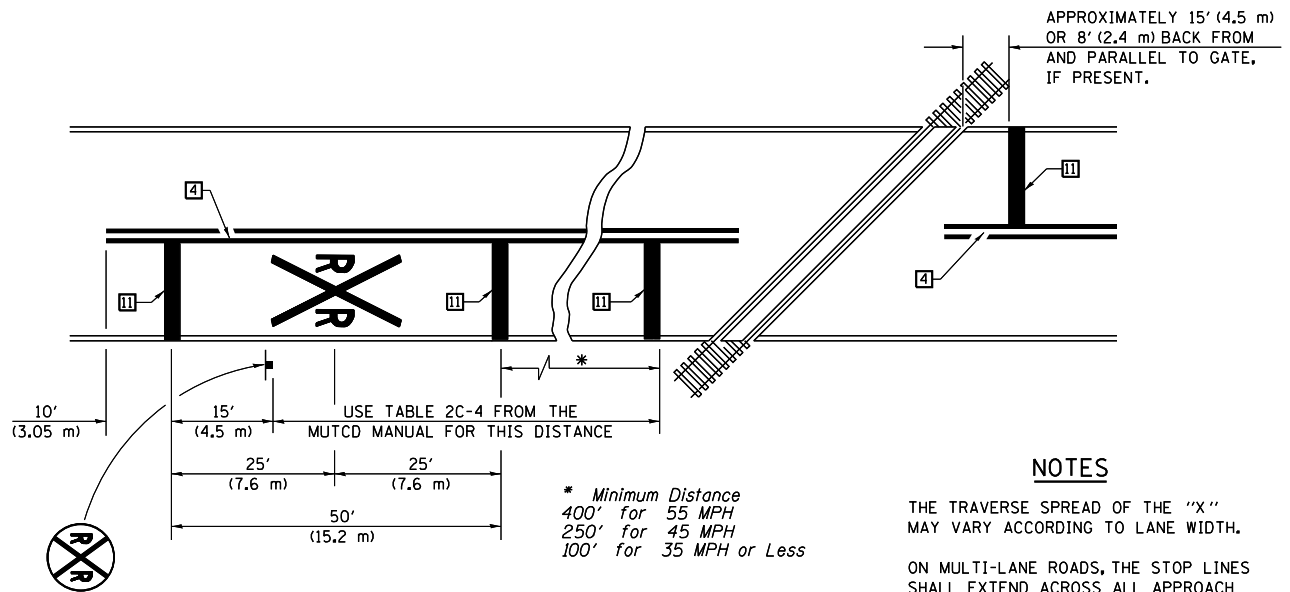
**PAVEMENT MARKING AND MARKERS  
 (RURAL & URBAN APPLICATIONS)**

SCALE: SHEET NO. OF SHEETS STA. TO STA.

F.A.P. RTE.	SECTION	COUNTY	TOTAL SHEETS	SHEET NO.
326	129R5-3	Champaign	24	20
				CONTRACT NO. 70706
ILLINOIS FED. AID PROJECT				

RAILROAD CROSSING WITH INTERCONNECT ONLY

RAILROAD CROSSING WITH INTERCONNECT AND PRE-SIGNALS



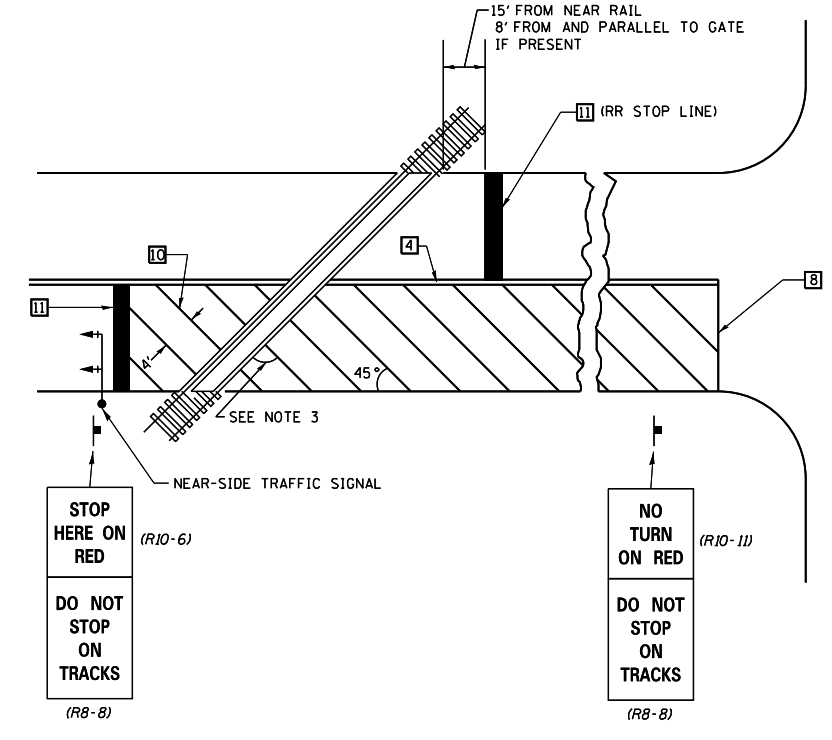
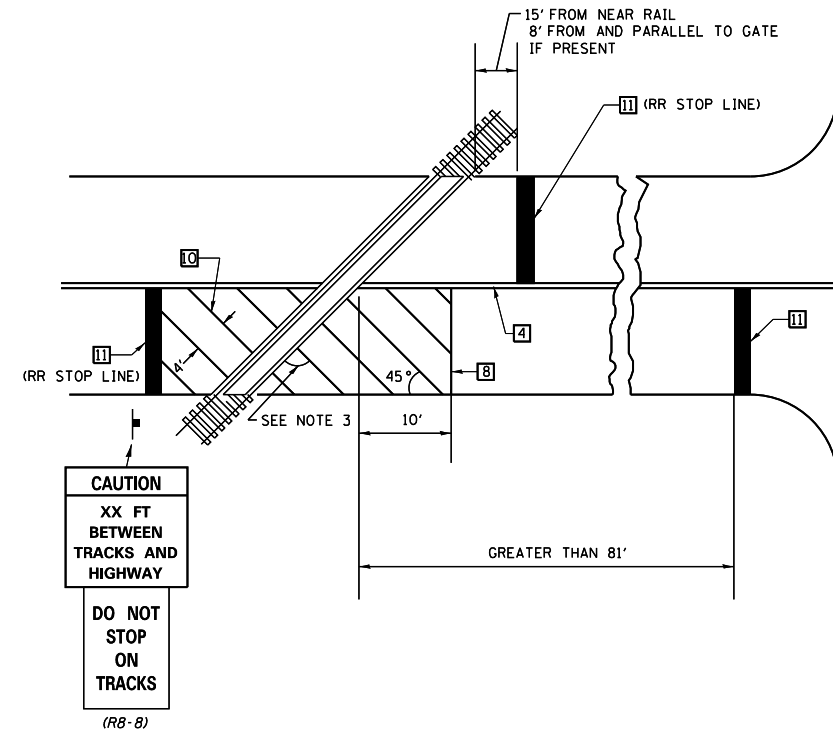
PAVEMENT MARKINGS AT RAILROAD-HIGHWAY GRADE CROSSING

NOTES

THE TRAVERSE SPREAD OF THE "X" MAY VARY ACCORDING TO LANE WIDTH.

ON MULTI-LANE ROADS, THE STOP LINES SHALL EXTEND ACROSS ALL APPROACH LANES AND SEPARATE R XR SYMBOLS SHALL BE PLACED ADJACENT TO EACH OTHER IN EACH LANE.

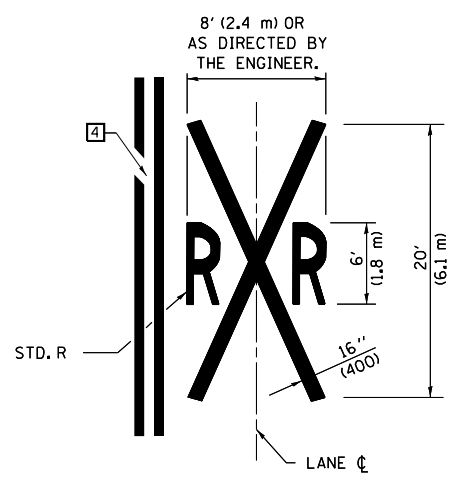
WHEN THE PAVEMENT MARKING SYMBOL IS USED, A PORTION OF THE SYMBOL SHOULD BE LOCATED DIRECTLY ADJACENT TO THE ADVANCE WARNING SIGN (W10-1) AS PLACED BY TABLE II-1, CONDITION B OF THE MUTCD.



SUPPLEMENTAL PAVEMENT MARKING TREATMENT FOR RAILROAD-HIGHWAY GRADE CROSSING

GENERAL NOTES

- SUPPLEMENTAL PAVEMENT MARKINGS TO BE INSTALLED ONLY ON APPROACHES TO INTERSECTIONS CONTROLLED BY TRAFFIC SIGNALS WHICH ARE INTERCONNECTED WITH THE RAILROAD WARNING SIGNALS.
- EXTEND PAVEMENT MARKINGS TO THE INTERSECTION ONLY WHERE NEAR-SIDE TRAFFIC SIGNALS ARE USED.
- WHERE THE ANGLE BETWEEN THE DIAGONAL PAVEMENT MARKINGS AND THE TRACK WOULD BE LESS THAN 20°, THE PAVEMENT MARKINGS SHOULD BE PLACED IN THE OPPOSITE DIRECTION FROM THAT SHOWN.

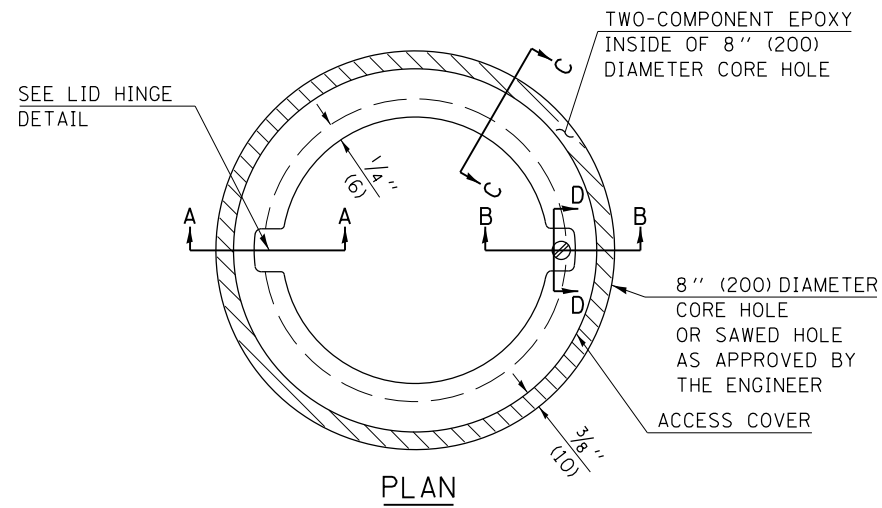


Note: All dimensions are in INCHES (millimeters) unless otherwise shown.

DISTRICT 5 DETAIL NO. 7800AAAA

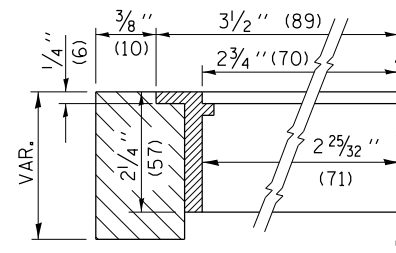
FILE NAME =	USER NAME = bucklesjj	DESIGNED -	REVISED -	<b>STATE OF ILLINOIS DEPARTMENT OF TRANSPORTATION</b>	<b>PAVEMENT MARKING AND MARKERS (RURAL &amp; URBAN APPLICATIONS)</b>			F.A.P. RTE.	SECTION	COUNTY	TOTAL SHEETS	SHEET NO.
et:\pw\work\p\idot\bucklesjj\d0180660\0570706-shd-Details.dgn		DRAWN -	REVISED -					326	129RS-3	Champaign	24	21
PLOT SCALE = 40.0000' / in.		CHECKED -	REVISED -		CONTRACT NO. 70706							
PLOT DATE = 8/15/2011		DATE -	REVISED -		ILLINOIS FED. AID PROJECT							

TO BE INSTALLED IN RIGID OR COMPOSITE PAVEMENT FOR PRESERVING LAND SURVEY MONUMENTS (SECTION OR SUBSECTION CORNERS)



**LEGEND**

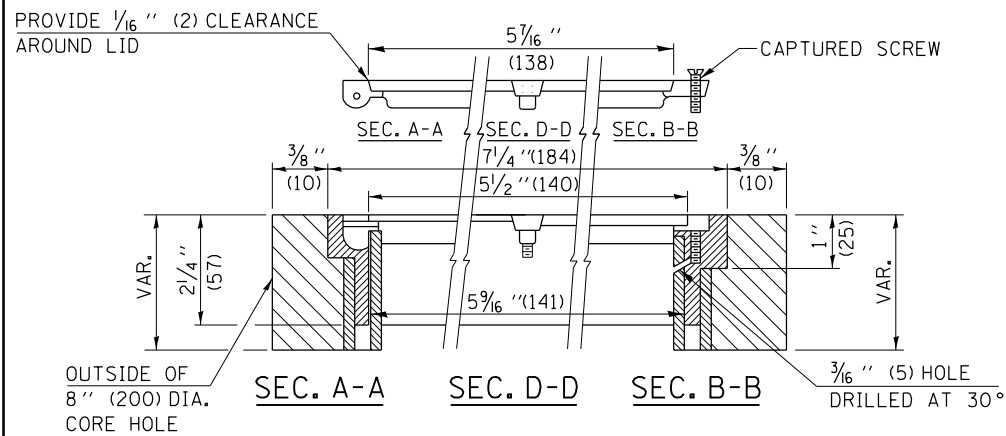
- ALUMINUM CASTING
- 5" (125) OR 6" (150) P.V.C. PIPE
- TWO-COMPONENT EPOXY
- T = THICKNESS OF PAVEMENT STRUCTURE
- H = THE THICKNESS OF THE SUB-BASE GRANULAR + 1" (25)



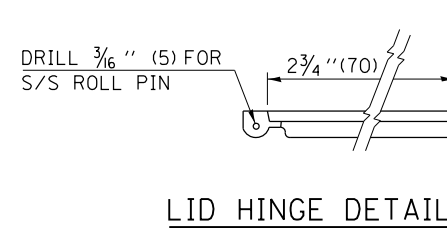
**SECTION C-C**

SPECIFICATIONS FOR ACCESS COVER FOR USE WITH SURVEY MARKER VAULT(S) AND SURVEY MARKER COVER ASSEMBLY(S): THE ACCESS COVER WILL BE CAST FROM A SPECIAL ALUMINUM ALLOY THAT IS COMPARABLE TO BRONZE IN HARDNESS. THE ACCESS COVER SHALL BE SPECIALLY ENGINEERED AND DESIGNED TO PROVIDE A SNUG FIT, INCORPORATING EQUIDISTANT LOCKING RIDGES, INSIDE A STANDARD 6" (150 mm) DIAMETER, OR OUTSIDE A STANDARD 5" (125 mm) DIAMETER, SCHEDULE 40 PVC PIPE. THE ACCESS COVER SHALL HAVE SPECIAL UNIFORM 1" (25 mm) THICK TOP SURFACE TO PERMIT INFORMATION TO BE EASILY MACHINE-STAMPED INTO IT. THE ACCESS COVER SHALL INCLUDE A STAINLESS CAPTURED SCREW AND AN OPPOSING RECESSED HINGE ASSEMBLY AS ITS LOCKING MECHANISM. THE ACCESS COVER SHALL INCORPORATE A SPECIAL ACCESS HOLE FOR CLEANING AND DRAINAGE, DRILLED AT 30° INSIDE THE RING OF THE ACCESS COVER, TO THE DRILLED AND TAPPED HOLE PROVIDED FOR THE STAINLESS CAPTURED SCREW. COMPOSITION: ALUMINUM 92-93%; MAGNESIUM 6.5-7.5%. STRENGTH: YIELD - 19,000-21,000 PSI (131-145 MPa); TENSILE - 38,000-44,000 PSI (262-303 MPa); ELONGATION - 10-15% IN 2" (50 mm). SPECIFICATIONS: ALLOY 535.0; 00-A-60IES. NO EXCEPTIONS.

RE-BAR-SURVEY MARKER, TYPE I, (SPECIAL) TO BE FURNISHED BY THE CONTRACTOR AND SET BY AN ILLINOIS PROFESSIONAL LAND SURVEYOR (SEE SPECIAL DETAIL SHEET FOR ALUMINUM TABLET AND RE-BAR SPECIFICATIONS).



**ELEVATION**



**LID HINGE DETAIL**

**BILL OF MATERIAL**

ALUMINUM CASTING OF THE DIMENSIONS AND SPECIFICATIONS SHOWN OR OTHER SUBJECT TO ENGINEER'S APPROVAL OF SHOP DRAWINGS, 5" OR 6" (125 mm OR 150 mm) DIAMETER P.V.C. PIPE, SCHEDULE 40, ALUMINUM TABLET, STAMPED IN ACCORDANCE WITH STANDARD 667101. 5/8" X 48" (#15 X 1.2 m) RE-BAR, EPOXY AND FA-01/02 AGGREGATE.

**GENERAL NOTES**

1. ALUMINUM CASTING SHALL BE EITHER PLACED OVER A 5" (125 mm) P.V.C. PIPE OR INSIDE OF A 6" (150 mm) P.V.C. PIPE.
2. BACKFILL WITH FINE AGGREGATE - FA-01/02.
3. WORK SHALL NOT START ON THIS ITEM UNTIL THE FINAL LIFT OF SURFACE HAS BEEN COMPLETED.
4. THIS WORK WILL BE PAID FOR AT THE CONTRACT UNIT PRICE EACH FOR SURVEY MARKER VAULT WHICH PRICE SHALL INCLUDE ALL LABOR AND MATERIAL AS SPECIFIED INCLUDING CORING, EPOXY AND FA-01/02 AGGREGATE AND NO ADDITIONAL COMPENSATION WILL BE ALLOWED.
5. THE CASTING SHALL BE ANCHORED IN THE 8" (200 mm) DIAMETER CORE HOLE WITH TWO-COMPONENT EPOXY CONFORMING TO APPLICABLE PORTIONS OF ARTICLE 1025.01 OF THE STANDARD SPECIFICATIONS.
6. ALL SURVEY MARKER (VAULTS) SHALL BE PLACED 1/4" (6 mm) ± BELOW THE FINAL SURFACE.
7. THE 8" (200 mm) DIAMETER CORE HOLE SHALL BE SUBJECT TO THE APPROVAL OF THE ENGINEER.

Note: All dimensions are in INCHES (millimeters) unless otherwise shown.

**DISTRICT 5 DETAIL NO. X0301232**

FILE NAME =	USER NAME = bucklesjj	DESIGNED -	REVISED -
ei:\pw\work\p\midot\bucklesjj\d0180660\0570706-shd-Details.dgn		DRAWN -	REVISED -
	PLOT SCALE = 40.0000' / in.	CHECKED -	REVISED -
	PLOT DATE = 8/15/2011	DATE -	REVISED -

**STATE OF ILLINOIS  
DEPARTMENT OF TRANSPORTATION**

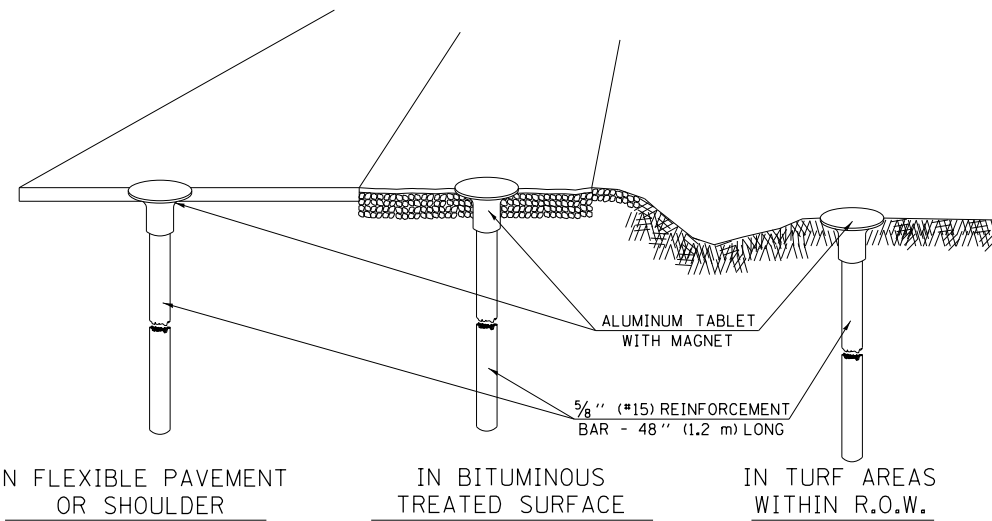
**SURVEY MARKER VAULT**

SCALE: SHEET NO. OF SHEETS STA. TO STA.

F.A.P. RTE.	SECTION	COUNTY	TOTAL SHEETS	SHEET NO.
326	129R5-3	Champaign	24	22
				CONTRACT NO. 70706
ILLINOIS FED. AID PROJECT				

## XZ193300 – SURVEY MARKER, TYPE 1 (SPECIAL)

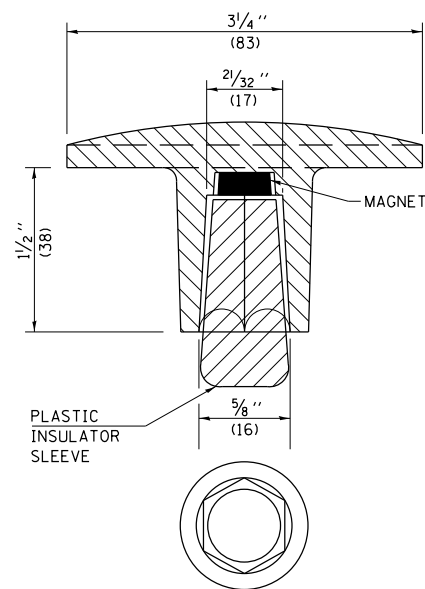
TO BE INSTALLED IN FLEXIBLE PAVEMENT OR SHOULDER, BITUMINOUS TREATED SURFACE AND TURF AREAS WITHIN THE RIGHT-OF-WAY FOR PRESERVING PERMANENT SURVEY MARKERS (PI'S, PT'S, PC'S, POC'S, & POT'S)



IN FLEXIBLE PAVEMENT OR SHOULDER

IN BITUMINOUS TREATED SURFACE

IN TURF AREAS WITHIN R.O.W.



THE DIMENSIONS SHOWN SHALL BE EXACT, OTHERS MAY VARY, BUT SHALL BE SHOWN ON SHOP DRAWINGS.

### GENERAL NOTES

1. THE CONTRACT UNIT PRICE, EACH, FOR SURVEY MARKER, TYPE 1 (SPECIAL) SHALL BE PAYMENT IN FULL FOR FURNISHING THE REINFORCEMENT BAR AND ALUMINUM TABLET AND FOR ALL LABOR AND MATERIAL REQUIRED TO SET THE MARKER IN PLACE.
2. ALL SURVEY MARKERS, TYPE 1 (SPECIAL) SHALL BE PLACED  $\pm 1/4"$  (6 mm) BELOW THE FINAL SURFACE.
3. WHEN THE TABLET AND REBAR ARE PLACED AS PART OF A SURVEY MARKER VAULT, THEY SHALL BE CONSIDERED AS INCLUDED IN THAT PAY ITEM AND THERE WILL BE NO PAYMENT FOR THE SURVEY MARKER, TYPE 1 (SPECIAL).

### SPECIFICATIONS FOR ALUMINUM TABLET

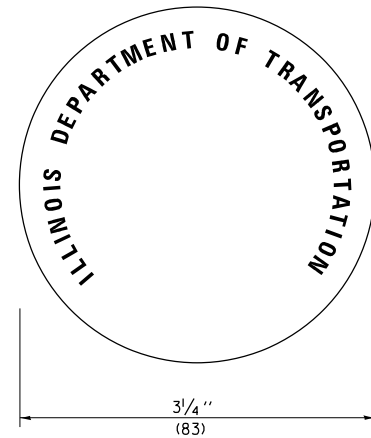
SURVEY CAP FOR REBAR.  $3/4"$  (83 mm) CONVEX SURVEY CAP FOR  $5/8"$  (15 mm) REBAR WITH ILLINOIS DEPARTMENT OF TRANSPORTATION LOGO. THIS LOGO SHALL PROVIDE LETTERS RECESSED INTO THE SURFACE A MINIMUM OF  $1/32"$  (0.8 mm) FOR EASY AND LONG-TERM LEGIBILITY. THE ALUMINUM CAP FOR REBAR SHALL BE PRODUCED BY THE PROCESS OF ORBITAL FORGING TO PRODUCE A HIGH-STRENGTH AND DURABLE MARKER CAP WHICH WILL NOT CHIP OR BREAK AND PROVIDE A SMOOTH FINISH FOR STAMPING OF DATA IN THE FIELD. THE ALUMINUM CAP FOR REBAR SHALL BE TAPERED FOR A PERFECT COMPRESSION FIT. A SPECIAL PLASTIC INSULATOR SHALL BE INSTALLED TO PREVENT DISSIMILAR METAL CONTACT AND CORROSION. THE PLASTIC INSULATOR SHALL FORM READILY TO THE OUTER SHAPE OF THE REBAR AND TO THE INNER SHAPE OF THE ALUMINUM CAP SOCKET. THE PLASTIC INSULATOR SHALL BE LOW DENSITY POLYETHYLENE, A MINIMUM  $1/2"$  (38 mm) LONG AND CONFORM TO FEDERAL SPECIFICATION L-P 390.

COMPOSITION: ALUMINUM 98.3-98.7%; OTHER 1.3-1.7%; STRENGTH: YIELD 28 KSI (193 MPa), ULTIMATE 32 KSI (221 MPa), ELONGATION 15% [IN 2" (50 mm)]. SPECIFICATIONS: ALUMINUM ALLOY 6101-0; ASTM B317-83 (EXCEPT TEMPER) AS FORGED. NO EXCEPTIONS.

### SPECIFICATIONS FOR REBAR

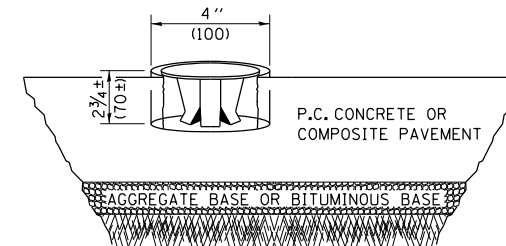
REBAR FOR ALUMINUM TABLET. REINFORCEMENT BAR SHALL BE  $5/8"$  (\*15) X 48" (1.2 m) (DEFORMED).

INSPECTION OF REINFORCEMENT BAR  $5/8"$  (\*15) SHALL BE DONE BY DISTRICT PERSONNEL OF THE ILLINOIS DEPARTMENT OF TRANSPORTATION, DIVISION OF HIGHWAYS.



## XZ193400 – SURVEY MARKER, TYPE 2 (SPECIAL)

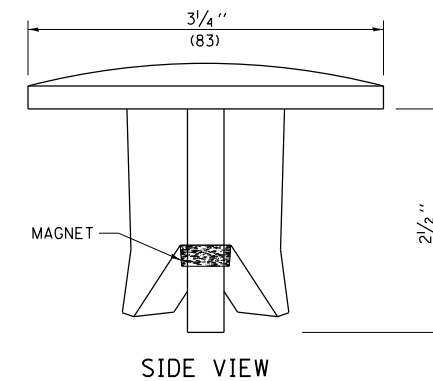
TO BE INSTALLED IN RIGID OR COMPOSITE PAVEMENT FOR PRESERVING PERMANENT SURVEY MARKERS (PI'S, PT'S, PC'S, POC'S, & POT'S)



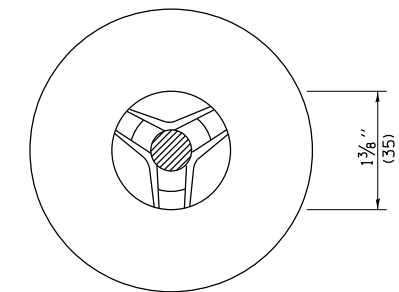
### SPECIFICATIONS FOR ALUMINUM TABLET (FORKED)

ALUMINUM TABLET (FORKED) FOR USE WITH "SURVEY MARKER, TYPE 2, (SPECIAL)" SHALL BE AS SHOWN ON THE DETAIL FOR THE  $3/4"$  (83 mm) CONVEX SURVEY TABLET WITH ILLINOIS DEPARTMENT OF TRANSPORTATION LOGO. THIS LOGO SHALL PROVIDE FOR LETTERS RECESSED INTO THE SURFACE A MINIMUM OF  $1/32"$  (0.8 mm) FOR EASY AND LONG-TERM LEGIBILITY. THE ALUMINUM TABLET SHALL BE PRODUCED BY THE PROCESS OF ORBITAL FORGING TO PRODUCE A HIGH-STRENGTH AND DURABLE MARKER CAP WHICH WILL NOT CHIP OR BREAK AND PROVIDE A SMOOTH FINISH FOR STAMPING OF DATA IN THE FIELD. THE ALUMINUM TABLET SHALL BE DESIGNED NOT TO TURN OR ROTATE. THREE PRONGS ON A  $2 1/2"$  (63 mm) STEM SHALL BE SUCH THAT THE ALUMINUM TABLET CANNOT BE EASILY REMOVED.

COMPOSITION: ALUMINUM 92-93%; MAGNESIUM 6.5-7.5%. STRENGTH: YIELD 19,000-21,000 PSI (131-145 MPa); TENSILE 38,000-44,000 PSI (262-303 MPa); ELONGATION 10-15% [IN 2" (50 mm)]. SPECIFICATIONS: ALLOY 535.0; 00-A-601ES. NO EXCEPTIONS.



SIDE VIEW



BOTTOM VIEW

THE DIMENSIONS SHOWN SHALL BE EXACT, OTHERS MAY VARY, BUT SHALL BE SHOWN ON SHOP DRAWINGS.

### GENERAL NOTES

1. WORK ON THIS ITEM SHALL NOT START UNTIL THE FINAL SURFACE IS COMPLETED.
2. THE ALUMINUM TABLET (FORKED) SHALL REST UPON THE BOTTOM OF THE 4" (100 mm) CORE HOLE. IF THE HOLE IS TOO DEEP, EPOXY GROUT MUST BE USED TO DECREASE THE DEPTH AND ALLOWED TO HARDEN BEFORE PROCEEDING.
3. THE ALUMINUM TABLET SHALL BE ANCHORED IN THE 4" (100 mm) DIAMETER HOLE IN THE NEW PAVEMENT WITH TWO-COMPONENT EPOXY CONFORMING TO APPLICABLE PORTIONS OF ARTICLE 1025.01 OF THE STANDARD SPECIFICATIONS.
4. THE 4" (100 mm) CORE HOLE SHALL BE SUBJECT TO THE APPROVAL OF THE ENGINEER.
5. THE CONTRACT PRICE, EACH, FOR SURVEY MARKER, TYPE 2 (SPECIAL) SHALL BE PAYMENT IN FULL FOR FURNISHING THE ALUMINUM TABLET AND FOR ALL LABOR AND MATERIAL REQUIRED TO SET THE MARKER IN PLACE, AS SPECIFIED, INCLUDING CORING THE NEW PAVEMENT.
6. ALL SURVEY MARKERS, TYPE 2 (SPECIAL) SHALL BE PLACED  $\pm 1/4"$  (6 mm) BELOW THE FINAL SURFACE.

Note: All dimensions are in INCHES (millimeters) unless otherwise shown.

FILE NAME =	USER NAME = bucklesjj	DESIGNED -	REVISED - 11/06
ei:\pw_work\pmdot\bucklesjj\0180660\0570706-shd-Details.dgn		DRAWN -	REVISED - 11/10
	PLOT SCALE = 40.0000 ' / in.	CHECKED -	REVISED -
	PLOT DATE = 8/15/2011	DATE -	REVISED -

STATE OF ILLINOIS  
DEPARTMENT OF TRANSPORTATION

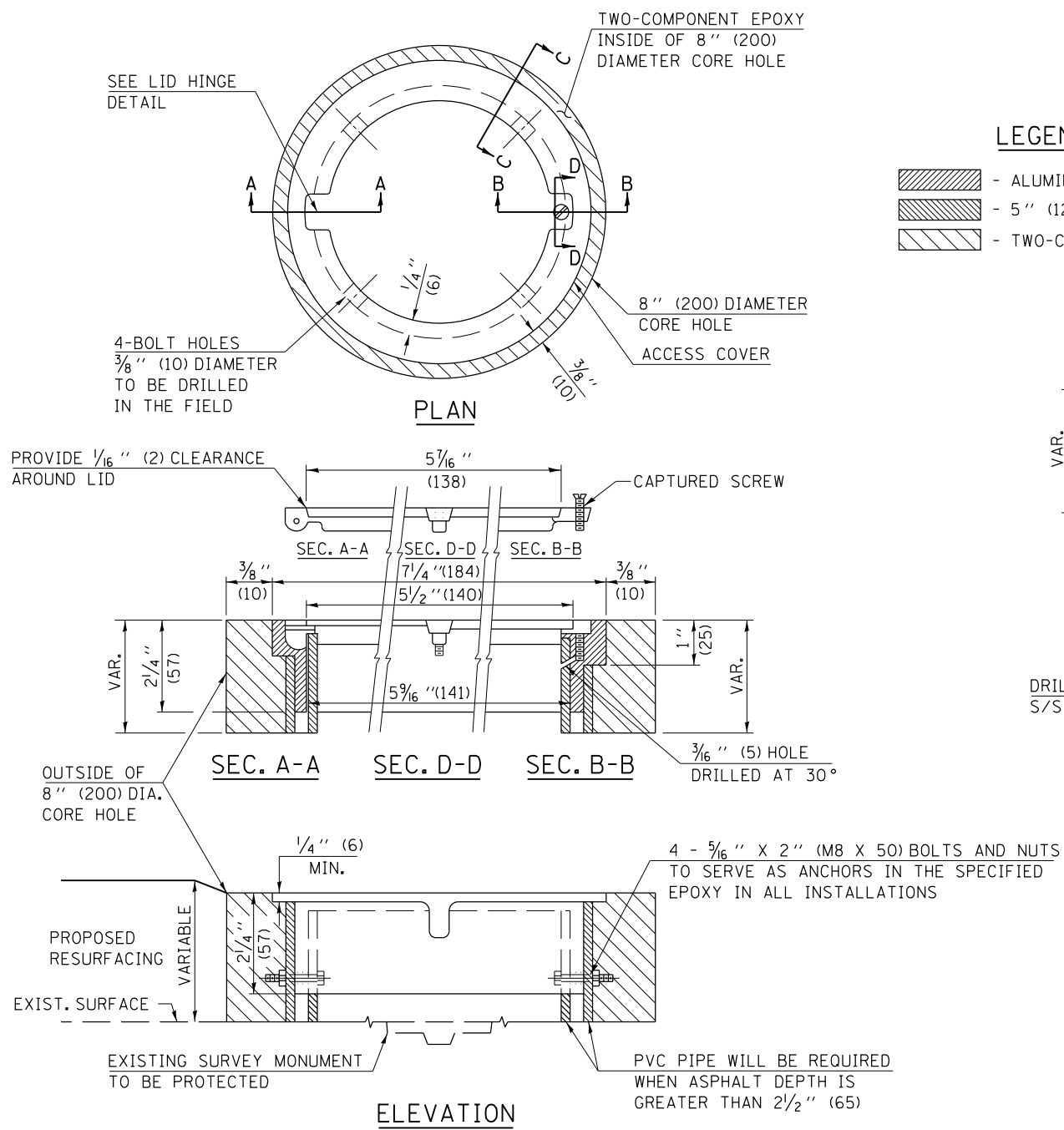
SURVEY MARKERS TYPE 1 & 2 (SPECIAL)

SCALE: SHEET NO. OF SHEETS STA. TO STA.

DISTRICT 5 DETAIL NO. XZ193AAA

F.A.P. RTE.	SECTION	COUNTY	TOTAL SHEETS	SHEET NO.
326	129RS-3	Champaign	24	23
FED. ROAD DIST. NO.				ILLINOIS FED. AID PROJECT
				CONTRACT NO. 70706

TO BE INSTALLED IN ALL PAVEMENT TYPES FOR PRESERVING PERMANENT SURVEY MARKERS (PI'S, PT'S, PC'S, POC'S, & POT'S) AND LAND SURVEY MONUMENTS (SECTION OR SUBSECTION CORNERS)



**LEGEND**

- ALUMINUM CASTING
- 5" (125) OR 6" (150) P.V.C. PIPE
- TWO-COMPONENT EPOXY

SPECIFICATIONS FOR ACCESS COVER FOR USE WITH SURVEY MARKER VAULT(S) AND SURVEY MARKER COVER ASSEMBLY(S): THE ACCESS COVER WILL BE CAST FROM A SPECIAL ALUMINUM ALLOY THAT IS COMPARABLE TO BRONZE IN HARDNESS. THE ACCESS COVER SHALL BE SPECIALLY ENGINEERED AND DESIGNED TO PROVIDE A SNUG FIT, INCORPORATING EQUIDISTANT LOCKING RIDGES, INSIDE A STANDARD 6" (150 mm) DIAMETER, OR OUTSIDE A STANDARD 5" (125 mm) DIAMETER, SCHEDULE 40 PVC PIPE. THE ACCESS COVER SHALL HAVE SPECIAL UNIFORM 1" (25 mm) THICK TOP SURFACE TO PERMIT INFORMATION TO BE EASILY MACHINE-STAMPED INTO IT. THE ACCESS COVER SHALL INCLUDE A STAINLESS CAPTURED SCREW AND AN OPPOSING RECESSED HINGE ASSEMBLY AS ITS LOCKING MECHANISM. THE ACCESS COVER SHALL INCORPORATE A SPECIAL ACCESS HOLE FOR CLEANING AND DRAINAGE, DRILLED AT 30° INSIDE THE RING OF THE ACCESS COVER, TO THE DRILLED AND TAPPED HOLE PROVIDED FOR THE STAINLESS CAPTURED SCREW. COMPOSITION: ALUMINUM 92-93%; MAGNESIUM 6.5-7.5%. STRENGTH: YIELD - 19,000-21,000 PSI (131-145 MPa); TENSILE - 38,000-44,000 PSI (262-303 MPa); ELONGATION - 10-15% IN 2" (50 mm). SPECIFICATIONS: ALLOY 535.0; 00-A-601Es. NO EXCEPTIONS.

BILL OF MATERIAL	
ALUMINUM CASTING OF THE DIMENSIONS AND SPECIFICATIONS SHOWN OR OTHER SUBJECT TO ENGINEER'S APPROVAL OF SHOP DRAWINGS,	
4 EACH - 5/16" X 2" (M8 X 50) BOLTS WITH NUTS, EPOXY,	
5" OR 6" (125 mm OR 150 mm) DIAMETER P.V.C. PIPE, SCHEDULE 40 (WHEN REQUIRED).	

**GENERAL NOTES**

1. WORK SHALL NOT START ON THIS ITEM UNTIL THE FINAL LIFT OF SURFACE HAS BEEN COMPLETED.
2. THE SURVEY MONUMENT COVER ASSEMBLY SHALL BE CENTERED ABOVE THE SURVEY MONUMENT TO BE PROTECTED.
3. MODIFICATION OF THE ALUMINUM CASTING SHALL BE DONE BY GRINDING OR SAWING WHEN HEIGHT REDUCTION IS REQUIRED.
4. ALL SURVEY MONUMENT COVER ASSEMBLIES SHALL BE PLACED 1/4" (6 mm) ± BELOW THE FINAL SURFACE.
5. ALUMINUM CASTING SHALL BE PLACED OVER A 5" (125 mm) P.V.C. PIPE OR INSIDE OF A 6" (150 mm) P.V.C. PIPE WHEN AN INCREASE IN HEIGHT IS REQUIRED.
6. THE CASTING SHALL BE ANCHORED IN THE 8" (200 mm) DIAMETER CORE HOLE WITH TWO-COMPONENT EPOXY CONFORMING TO APPLICABLE PORTIONS OF ARTICLE 1025.01 OF THE STANDARD SPECIFICATIONS.
7. THIS WORK WILL BE PAID FOR AT THE CONTRACT UNIT PRICE EACH FOR SURVEY MONUMENT COVER ASSEMBLY WHICH PRICE SHALL INCLUDE ALL LABOR AND MATERIAL AS SPECIFIED INCLUDING CORING THE NEW PAVEMENT SURFACE AND EPOXY. NO ADDITIONAL COMPENSATION WILL BE ALLOWED.
8. THE 8" (200 mm) DIAMETER CORE HOLE SHALL BE SUBJECT TO THE APPROVAL OF THE ENGINEER.

Note: All dimensions are in INCHES (millimeters) unless otherwise shown.

FILE NAME =	USER NAME = bucklesjj	DESIGNED -	REVISED - 11/06
ei:\pw\work\p\idot\bucklesjj\d0180660\0570706-shd-Details.dgn		DRAWN -	REVISED -
	PLOT SCALE = 40.0000' / in.	CHECKED -	REVISED -
	PLOT DATE = 8/15/2011	DATE -	REVISED -

**STATE OF ILLINOIS  
DEPARTMENT OF TRANSPORTATION**

**SURVEY MONUMENT COVER ASSEMBLY**

SCALE:      SHEET NO. OF SHEETS      STA. TO STA.

DISTRICT 5 DETAIL NO. Z0070100			
F.A.P. RTE.	SECTION	COUNTY	TOTAL SHEETS
326	129RS-3	Champaign	24
			SHEET NO. 24
CONTRACT NO. 70706			
ILLINOIS FED. AID PROJECT			