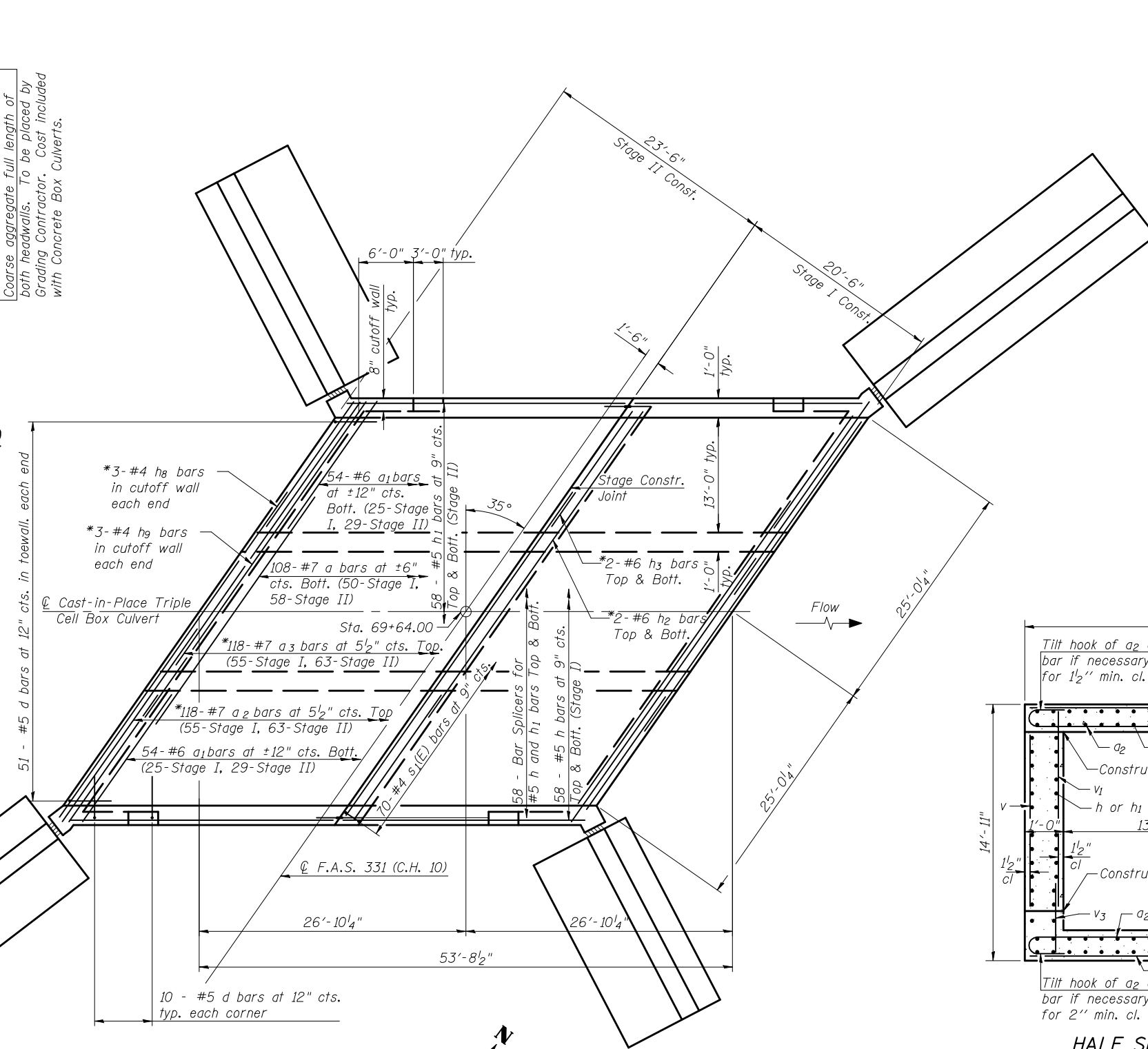


AT UPSTREAM END

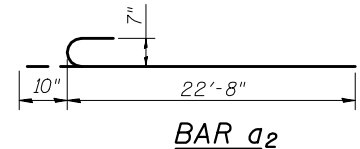
AT DOWNSTREAM END

DRAIN DETAIL

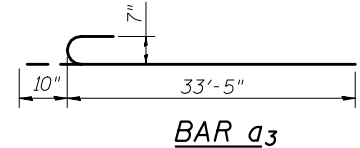


PLAN
BOTTOM SLAB

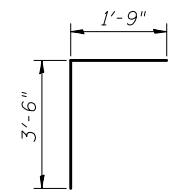
* Stagger laps at adjacent bars in members with only single lap splices.



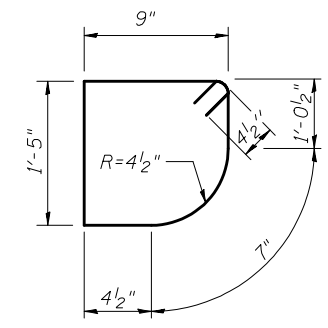
BAR a2



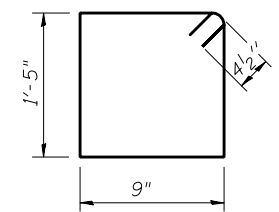
BAR a3



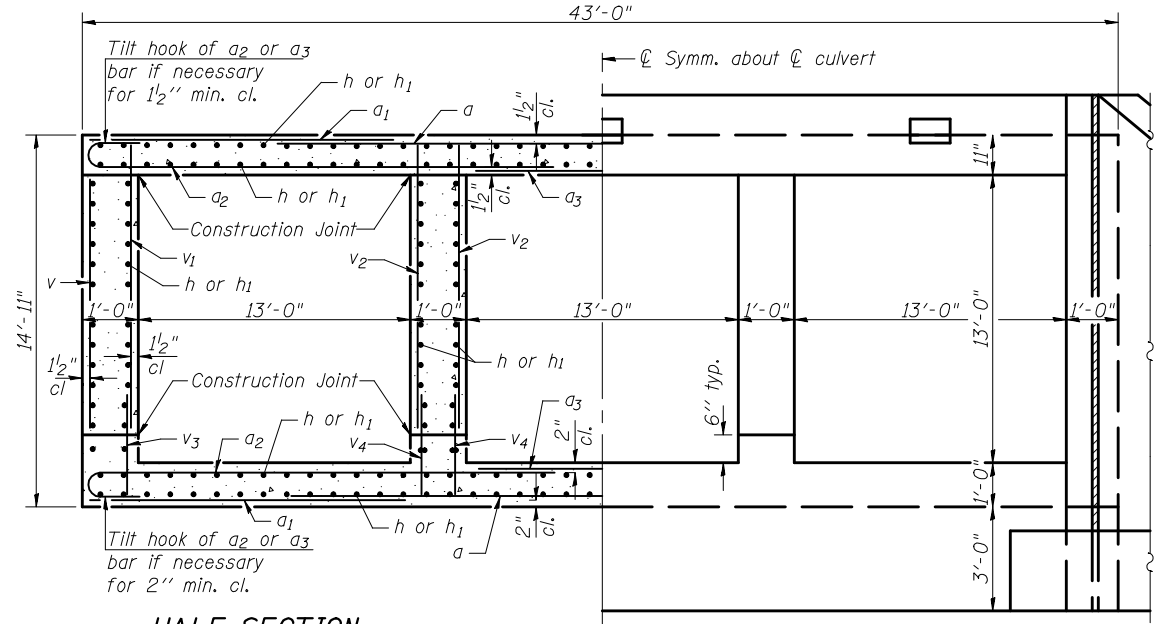
BAR d



BAR s(E)



BAR s1(E)



HALF SECTION
THRU BARREL

(horiz. dim. @ rt. L's to rdwy.)

HALF END ELEVATION

(horiz. dim. @ rt. L's to rdwy.)

Notes:
See Sheet 6 of 9 for wing wall reinforcement and details.
See Sheet 4 of 9 for Bill of Material.

McDonough-Whitlow, P.C.
Consulting Engineers & Land Surveyors
138 East Wood Street
Hillsboro, IL 62049
Phone: 217.532.9233
Fax: 217.532.6300
PROFESSIONAL DESIGN No. 184-002754

FILE NAME = 0922044-70434.dgn

USER NAME = RNH

DESIGNED - JMH

REVISED -

CHECKED - TMM

REVISIONS -

PLOT SCALE =

DRAWN - RNH

REVISIONS -

PLOT DATE =

CHECKED - TMM

REVISIONS -

STATE OF ILLINOIS
DEPARTMENT OF TRANSPORTATION

BOTTOM SLAB DETAILS
STRUCTURE NO. 092-2044

SHEET NO. 5 OF 9 SHEETS

F.A.S. RTE.	SECTION	COUNTY	TOTAL SHEETS	SHEET NO.
331	(79-102)BR	VERMILION	29	16

CONTRACT NO. 70434

ILLINOIS FED. AID PROJECT