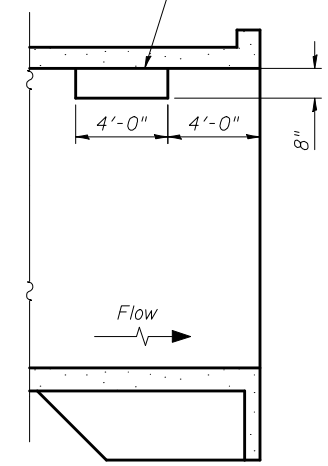
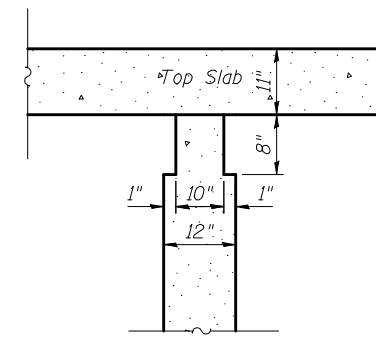


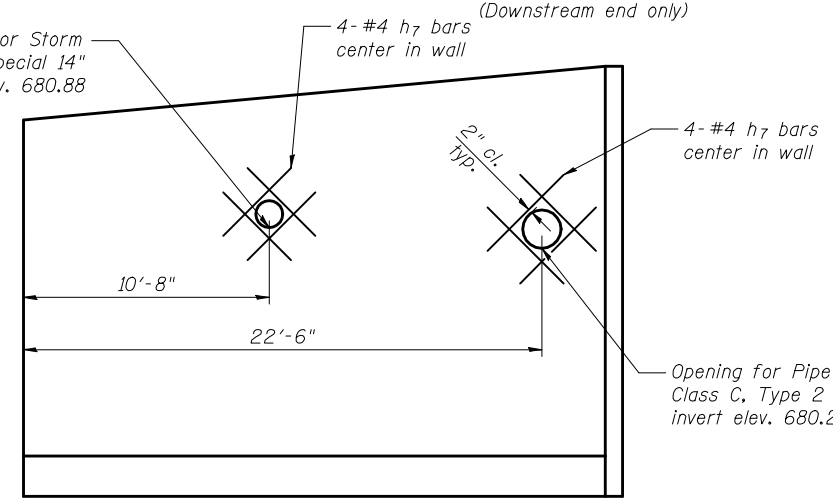
Notch formed by rough finished board attached to and removed with formwork. Each interior wall (do not chamfer).



**PHOEBE NESTING SITE
LONGITUDINAL SECTION**
(Downstream end only)



**PHOEBE NESTING
SITE DETAIL**
(Downstream end only)

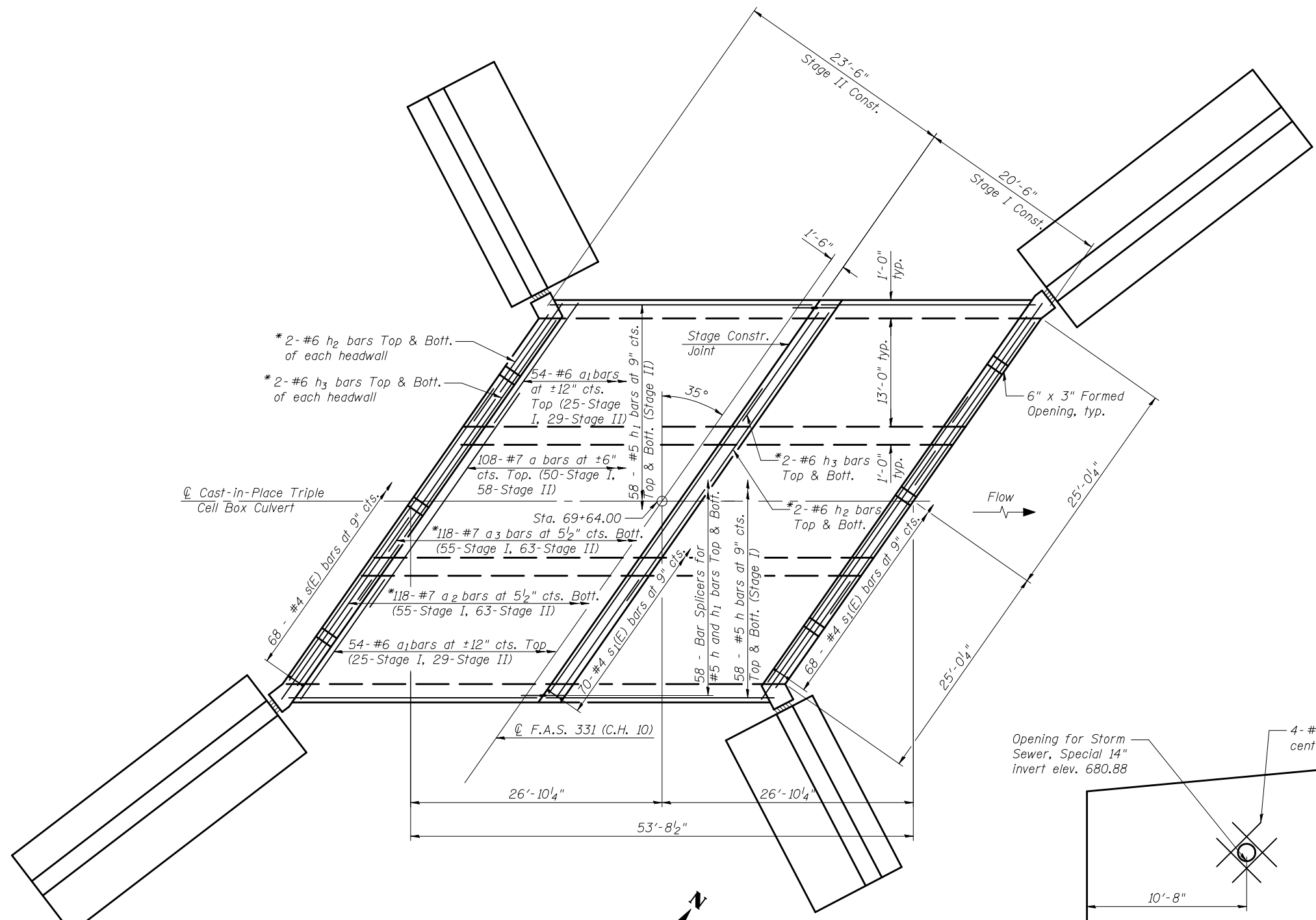


DRAIN PIPE DETAIL
NW Wingwall only. Reinforcement shown is in addition to wingwall reinforcement. See sheet 6 of 9.

BILL OF MATERIAL

Bar	No.	Size	Length	Shape
a	216	#7	26'-3"	—
a ₁	216	#6	16'-1"	—
a ₂	236	#7	23'-6"	C
a ₃	236	#7	34'-3"	C
d	142	#5	5'-3"	—
h	344	#5	24'-8"	—
h ₁	344	#5	28'-4"	—
h ₂	16	#6	36'-0"	—
h ₃	16	#6	18'-4"	—
h ₄	54	#4	32'-0"	—
h ₅	29	#4	25'-0"	—
h ₆	27	#4	21'-0"	—
h ₇	8	#4	4'-8"	—
h ₈	6	#4	30'-0"	—
h ₉	6	#4	23'-4"	—
n(E)	134	#7	7'-9"	U
n ₁ (E)	138	#6	4'-1"	U
s(E)	68	#4	4'-11"	D
s ₁ (E)	208	#4	5'-1"	D
t	266	#6	9'-10"	—
v	112	#5	12'-2"	—
v ₁	146	#6	13'-1"	—
v ₂	224	#5	13'-1"	—
v ₃	146	#6	3'-11"	—
v ₄	224	#5	3'-1"	—
v ₅	138	#5	8'-3"	—
v ₆	35	#4	8'-4"	—
v ₇	34	#4	8'-10"	—
v ₈	35	#4	9'-5"	—
v ₉	34	#4	10'-2"	—
v ₁₀	26	#4	30'-0"	—
v ₁₁	8	#5	13'-11"	—
v ₁₂	8	#5	6'-2"	—
v ₁₃	8	#4	30'-10"	—
w	22	#5	31'-11"	—
w ₁	11	#5	24'-11"	—
w ₂	11	#5	20'-11"	—
Reinforcement Bars		Pound	85,020	
Reinforcement Bars, Epoxy Coated		Pound	3,900	
Concrete Box Culverts		Cu. Yd.	425.1	
Bar Splicers		Each	344	

Notes:
See Sheet 6 of 9 for wing wall reinforcement and details.
See sheet 5 of 9 for bar a₁, d, s(E), and s₁(E) details.



**PLAN
TOP SLAB**

* Stagger laps at adjacent bars in members with only single lap splices.

FILE NAME = 0922044-70434.dgn	USER NAME = RNH	DESIGNED - JMH	REVISED -
		CHECKED - TMM	REVISED -
		DRAWN - RNH	REVISED -
		CHECKED - TMM	REVISED -

**STATE OF ILLINOIS
DEPARTMENT OF TRANSPORTATION**

**TOP SLAB DETAILS
STRUCTURE NO. 092-2044**

SHEET NO. 4 OF 9 SHEETS

F.A.S. RTE.	SECTION	COUNTY	TOTAL SHEETS	SHEET NO.
331	(79-102)BR	VERMILION	29	15
			CONTRACT NO. 70434	

McDonough-Whitlow, P.C.
Consulting Engineers & Land Surveyors
138 East Wood Street
Hillsboro, IL 62049
Phone: 217.532.9233
Fax: 217.532.6300
PROFESSIONAL DESIGN No. 184-002754

ILLINOIS FED. AID PROJECT