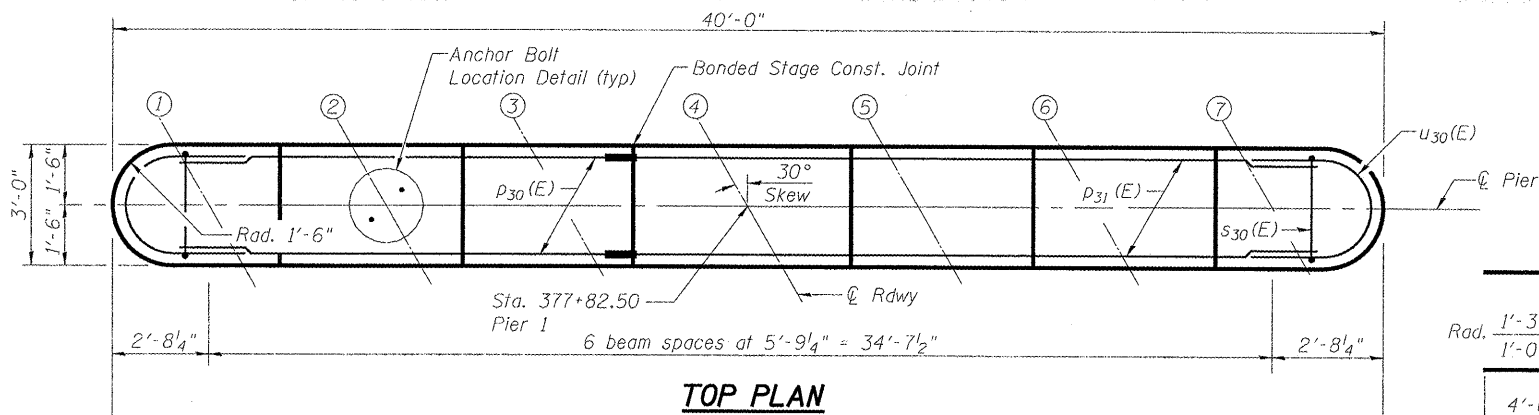


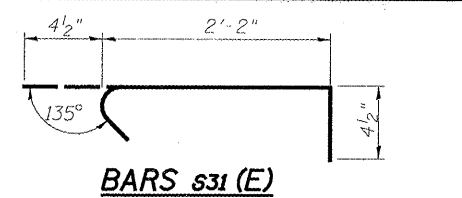
**PIER 1 PILE DATA**

Type: HP14x73  
 Nominal Required Bearing: 248 kips  
 Factored Resistance Available: 131 kips  
 Est. Length: 87'  
 No. Production Piles: 9  
 \*\* No. Test Piles: 1

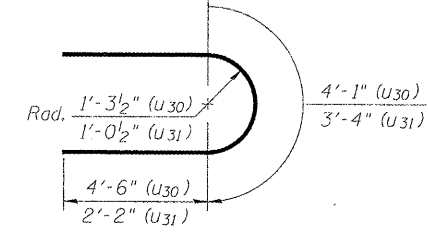
\*\*Test Pile shall be driven in conformance with Special Provision, Dynamic Pile Monitoring. Minimum waiting period = 10 days.



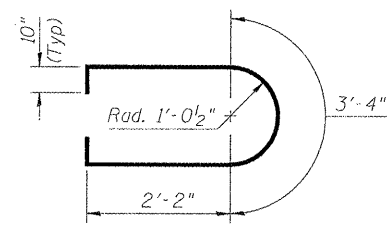
**TOP PLAN**



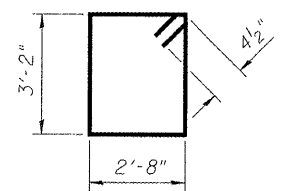
**BARS s31 (E)**



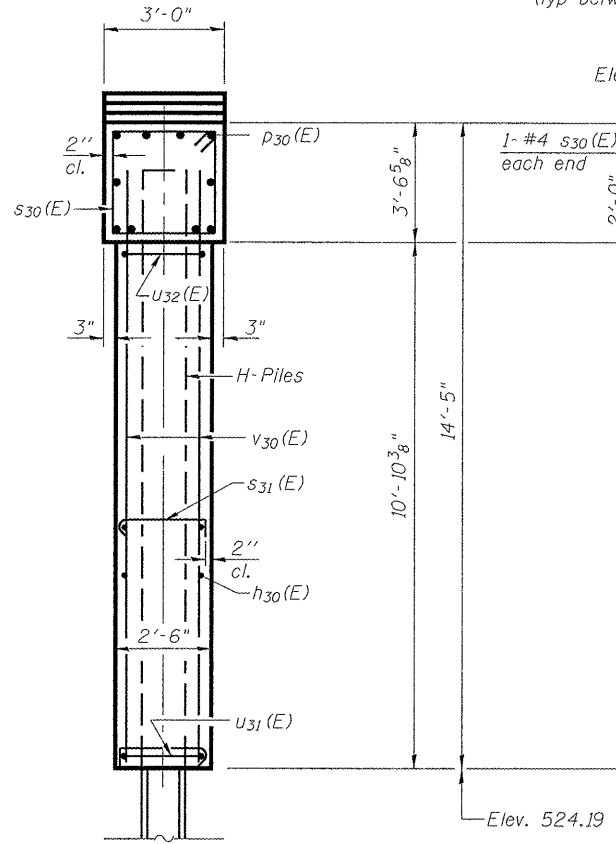
**BARS U30(E) & U31(E)**



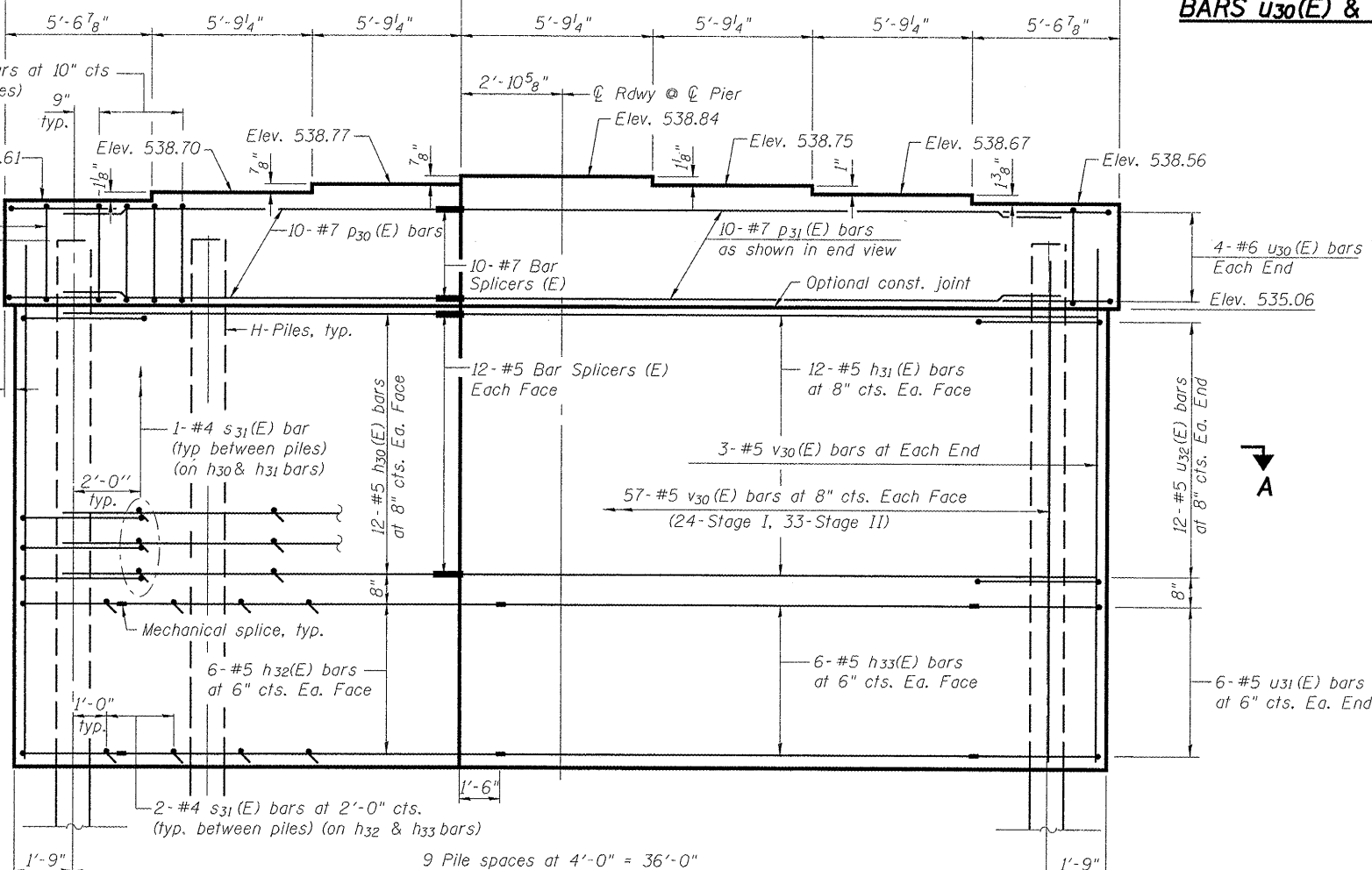
**BARS U32(E)**



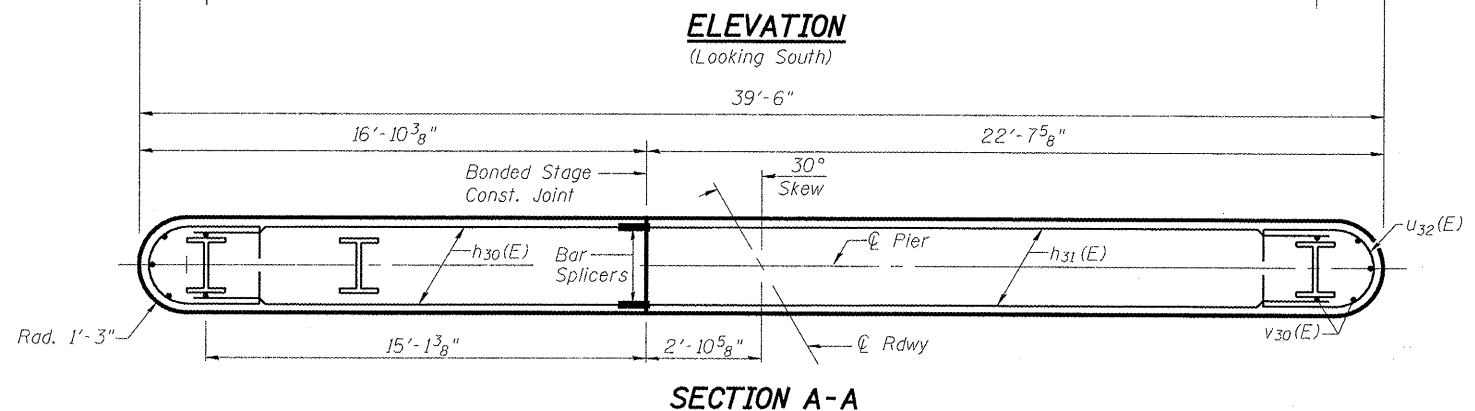
**BAR s30 (E)**



**END VIEW**



**ELEVATION**  
(Looking South)



**SECTION A-A**

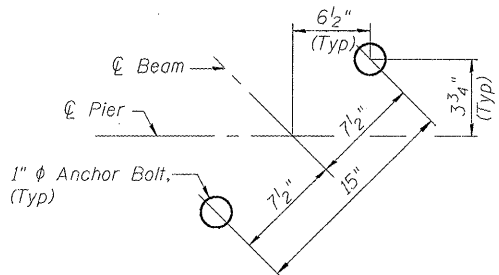
**BILL OF MATERIAL**

Bar	No.	Size	Length	Shape
h30 (E)	24	#5	15'-7"	—
h31 (E)	24	#5	21'-4"	—
h32 (E)	12	#5	15'-0"	—
h33 (E)	12	#5	17'-9"	—
p30 (E)	10	#7	15'-10"	—
p31 (E)	10	#7	21'-7"	—
s30 (E)	38	#4	12'-5"	□
s31 (E)	216	#4	2'-11"	┌
u30 (E)	8	#6	13'-1"	U
u31 (E)	12	#5	7'-8"	U
u32 (E)	24	#5	9'-4"	U
v30 (E)	120	#5	12'-11"	—
Structure Excavation		Cu. Yd.	23	
Concrete Structures		Cu. Yd.	55.4	
Reinforcement Bars, Epoxy Coated		Pound	4,940	
Furnishing Steel Piles HP14x73		Foot	783	
Driving Piles		Foot	783	
** Test Pile Steel HP14x73		Each	1	
Underwater Structure Excavation Protection-Location 1		Each	1	

Notes:  
 If a portion of the pier wall or concrete encasement is underwater, reinforcement may be placed underwater into forms. Concrete shall be tremied according to Article 503.08 of the Standard Specifications to an elevation of 1'-0" above the water line at the time of construction.  
 Space reinforcement in cap to miss anchor bolts.  
 Pour steps monolithically with cap.  
 For details of piles, see sheet 24 of 27.

HURST-ROSCHKE ENGINEERS, INC.  
 HILLSBORO, ILLINOIS 62049  
 (217)532-3959 FAX (217)532-3212  
 HR JOB # 190-1785

**ANCHOR BOLT LOCATION DETAIL**



FILE NAME *	USER NAME *	DESIGNED - JSP	REVISED -	STATE OF ILLINOIS DEPARTMENT OF TRANSPORTATION	PIER 1 STRUCTURE NO. 036-0071	F.A.P. R.T.E.	SECTION	COUNTY	TOTAL SHEETS	SHEET NO.	
		CHECKED - CJC	REVISED -			522	(14-1-B1) BR	HENDERSON	70	33	
		PLOT SCALE =	DRAWN - UJ			CONTRACT NO. 68298					
		PLOT DATE =	CHECKED - RVB			ILLINOIS FED. AID PROJECT					