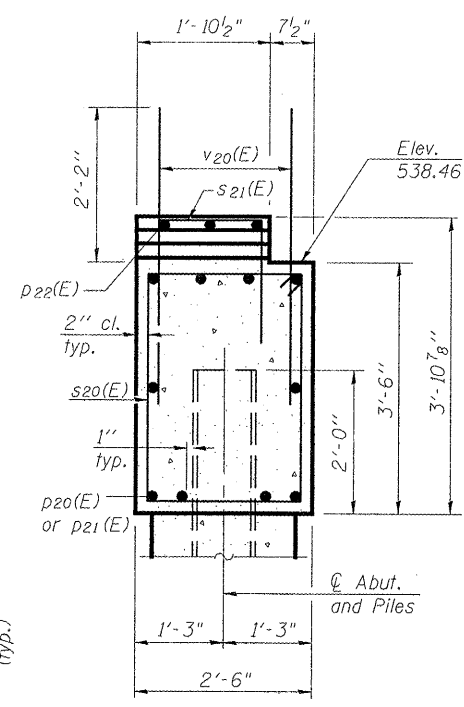
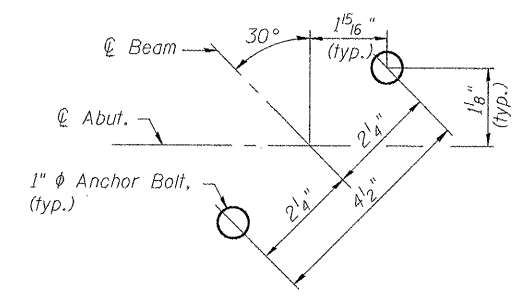


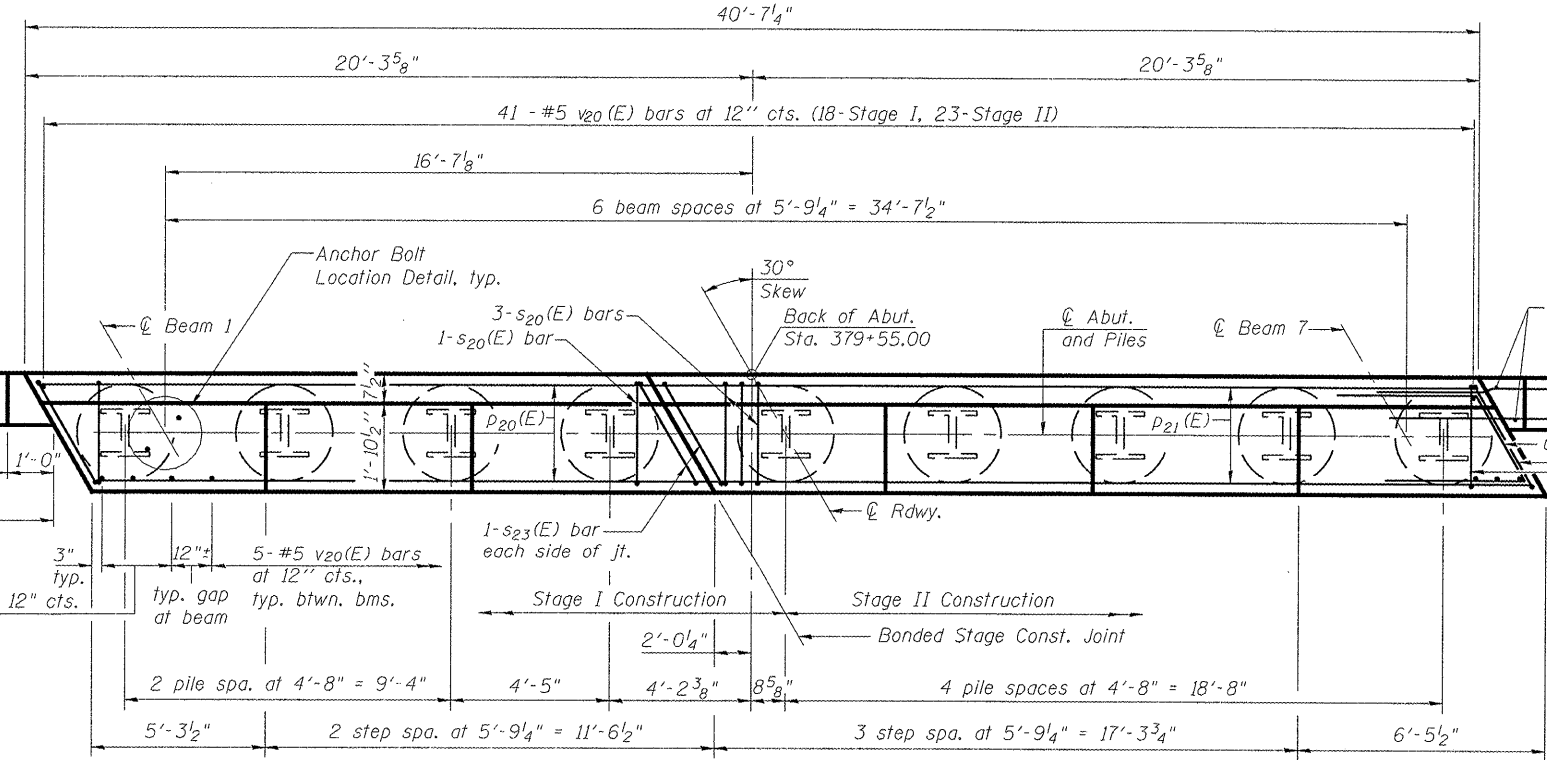
ELEVATION AT SOUTH ABUTMENT
(Looking South)



SEC. THRU ABUT.



ANCHOR BOLT LOCATION DETAIL



PLAN

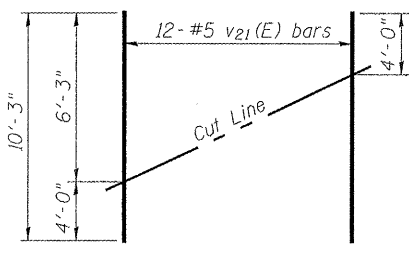
PILE DATA

Type: HP12x53
 Nominal Required Bearing: 191 kips
 Factored Resistance Available: 105 kips
 Est. Length: 89'
 No. Production Piles: 8
 **No. Test Piles: 1
 **Test Pile shall be driven in conformance with Special Provision, Dynamic Pile Monitoring. Minimum waiting period = 10 days.

BILL OF MATERIAL

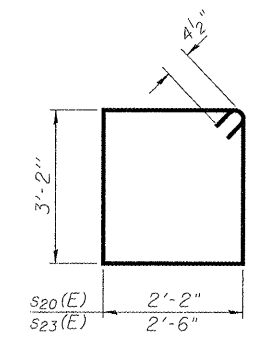
Bar	No.	Size	Length	Shape	
h20(E)	36	#6	8'-10"	—	
p20(E)	10	#7	16'-6"	—	
p21(E)	10	#7	23'-5"	—	
p22(E)	3	#4	6'-3"	—	
s20(E)	41	#4	11'-5"	□	
s21(E)	4	#4	4'-10"	□	
s22(E)	2	#4	5'-0"	□	
s23(E)	4	#4	12'-1"	□	
u20(E)	8	#6	8'-5"	∩	
v20(E)	77	#5	4'-4"	—	
v21(E)	12	#5	10'-3"	—	
v22(E)	4	#5	6'-3"	—	
* Structure Excavation				Cu. Yd.	108
Concrete Structures				Cu. Yd.	16.6
Reinforcement Bars, Epoxy Coated				Pound	2,275
Furnishing Steel Piles, HP12x53				Foot	712
Driving Piles				Foot	712
** Test Pile Steel, HP12x53				Each	1
Concrete Encasement				Cu. Yd.	3.1

*Includes 46.5 Cu. Yd. Structure Excavation for Porous Granular Embankment, Special

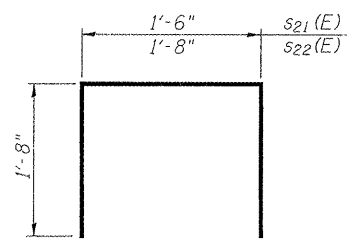


FIELD CUTTING DIAGRAM

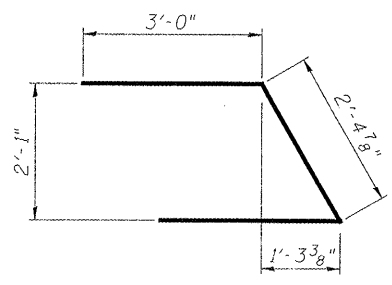
Order v21(E) full length. Cut as shown and use remainder of bars in opposite face.



BAR s20(E) & s23(E)



BAR s21(E) & s22(E)



BAR u20(E)

HURST-ROSCHKE ENGINEERS, INC.
 HILLSBORO, ILLINOIS 62049
 (217)532-3959 FAX (217)532-3212
 HR JOB # 190-1785

HR
 HURST-ROSCHKE ENGINEERS, INC.

AI-L

FILE NAME =	USER NAME =	DESIGNED - JSP	REVISED -
		CHECKED - CJC	REVISED -
		DRAWN - UJ	REVISED -
		CHECKED - RVB	REVISED -

STATE OF ILLINOIS
 DEPARTMENT OF TRANSPORTATION

SOUTH ABUTMENT
 STRUCTURE NO. 036-0071

F.A.P. RTE.	SECTION	COUNTY	TOTAL SHEETS	SHEET NO.
522	(14-1-B1) BR	HENDERSON	70	32
				CONTRACT NO. 68298
ILLINOIS FED. AID PROJECT				

SHEET NO. 19 OF 27 SHEETS