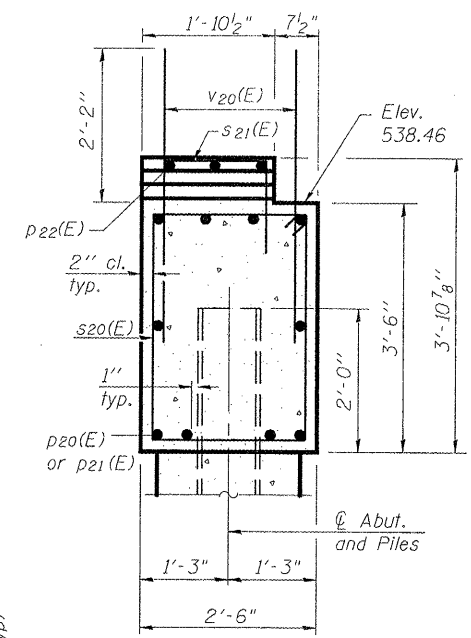
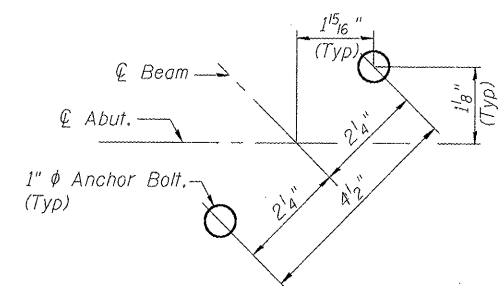


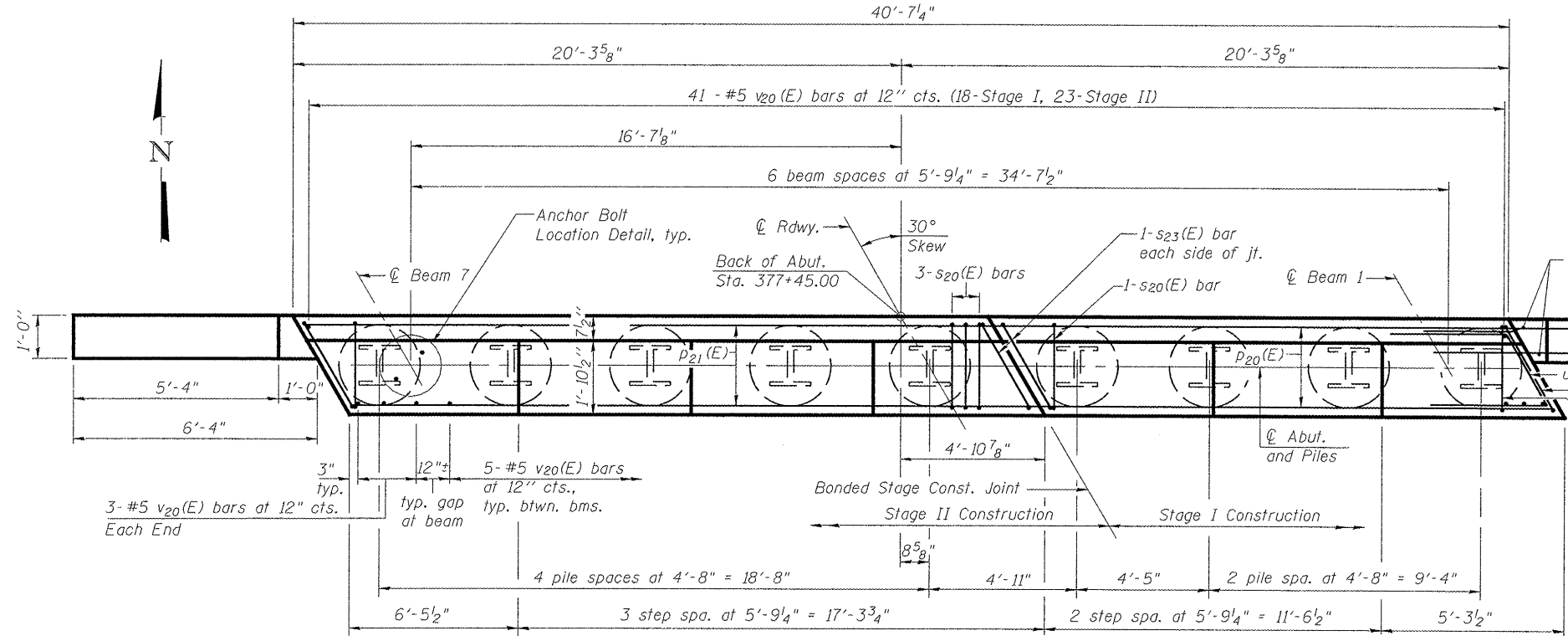
ELEVATION AT NORTH ABUTMENT
(Looking North)



SEC. THRU ABUT.



ANCHOR BOLT LOCATION DETAIL



PLAN

PILE DATA

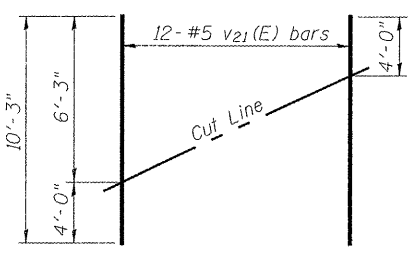
Type: HP12x53
 Nominal Required Bearing: 195 kips
 Factored Resistance Available: 107 kips
 Est. Length: 74'
 No. Production Piles: 8
 **No. Test Piles: 1

**Test Pile shall be driven in conformance with Special Provision, Dynamic Pile Monitoring. Minimum waiting period = 10 days.

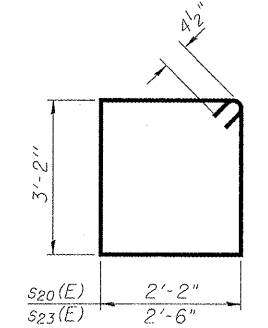
BILL OF MATERIAL

| Bar No. | Size | Length | Shape |
|----------------------------------|---------|--------|-------|
| h20(E) | #6 | 8'-10" | — |
| p20(E) | #7 | 16'-6" | — |
| p21(E) | #7 | 23'-5" | — |
| p22(E) | #4 | 6'-3" | — |
| s20(E) | #4 | 11'-5" | □ |
| s21(E) | #4 | 4'-10" | □ |
| s22(E) | #4 | 5'-0" | □ |
| s23(E) | #4 | 12'-1" | □ |
| u20(E) | #6 | 8'-5" | ∩ |
| v20(E) | #5 | 4'-4" | — |
| v21(E) | #5 | 10'-3" | — |
| v22(E) | #5 | 6'-3" | — |
| Structure Excavation | Cu. Yd. | 108 | |
| Concrete Structures | Cu. Yd. | 16.6 | |
| Reinforcement Bars, Epoxy Coated | Pound | 2,275 | |
| Furnishing Steel Piles, HP12x53 | Foot | 592 | |
| Driving Piles | Foot | 592 | |
| Test Pile Steel HP12x53 | Each | 1 | |
| Concrete Encasement | Cu. Yd. | 3.1 | |

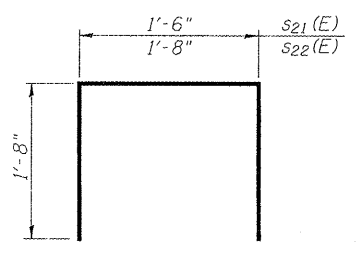
*Includes 46.5 Cu. Yd. Structure Excavation for Porous Granular Embankment, Special



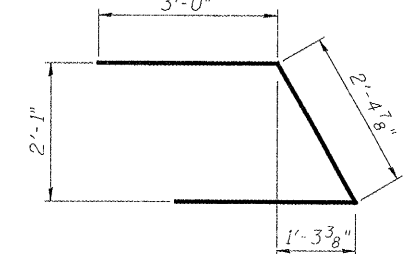
FIELD CUTTING DIAGRAM
Order v21(E) full length. Cut as shown and use remainder of bars in opposite face.



BAR s20(E) & s23(E)



BAR s21(E) & s22(E)



BAR u20(E)

Notes:
 Pour steps monolithically with cap.
 For details of Bar Splicers, see sheet 25 of 27.
 For details of piles and Concrete Encasement, see sheet 24 of 27.

HURST-ROSCHER ENGINEERS, INC.
 HILLSBORO, ILLINOIS 62049
 (217)532-3959 FAX (217)532-3212
 HR JOB # 190-1785

HR HURST-ROSCHER ENGINEERS, INC.

AI-L

| | | | |
|-------------|---------------|----------------|-----------|
| FILE NAME = | USER NAME = | DESIGNED - JSP | REVISED - |
| | CHECKED - CJC | CHECKED - CJC | REVISED - |
| | PLOT SCALE = | DRAWN - UJ | REVISED - |
| | PLOT DATE = | CHECKED - RVB | REVISED - |

STATE OF ILLINOIS
 DEPARTMENT OF TRANSPORTATION

NORTH ABUTMENT
 STRUCTURE NO. 036-0071

| F.A.P. RTE. | SECTION | COUNTY | TOTAL SHEETS | SHEET NO. |
|---------------------------|--------------|-----------|--------------|--------------------|
| 522 | (14-1-B1) BR | HENDERSON | 70 | 31 |
| | | | | CONTRACT NO. 68298 |
| ILLINOIS FED. AID PROJECT | | | | |

SHEET NO. 18 OF 27 SHEETS