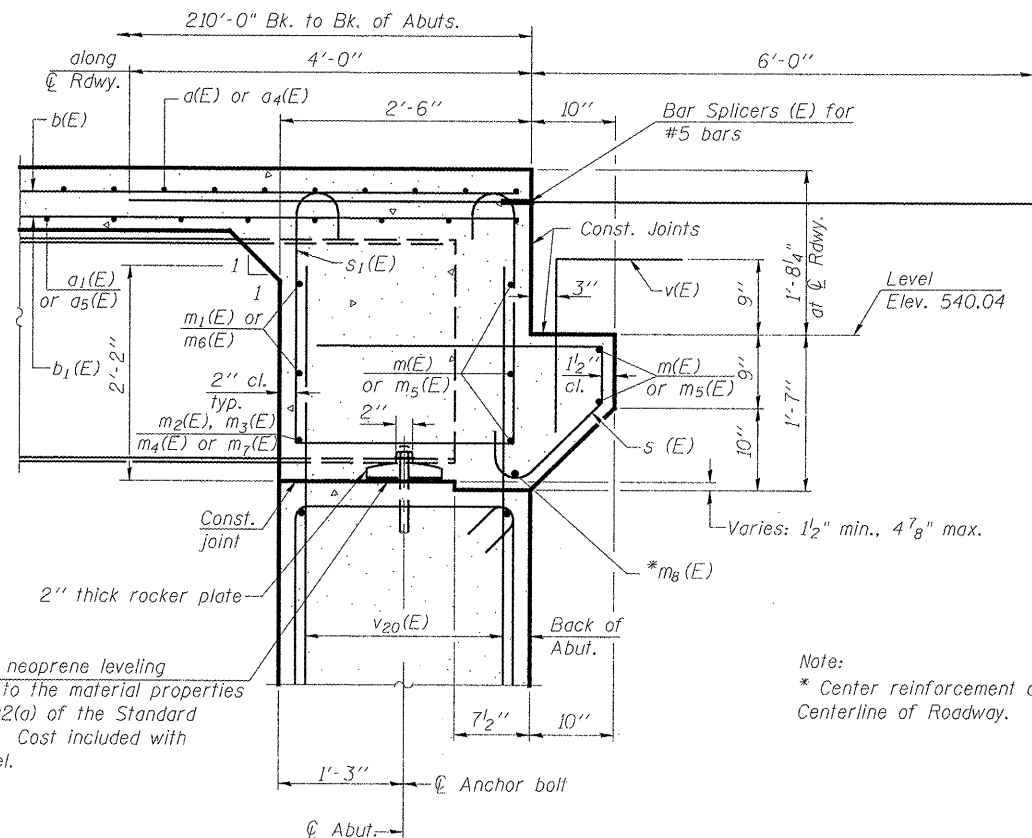


DIAPHRAGM ELEVATION AT ABUTMENT

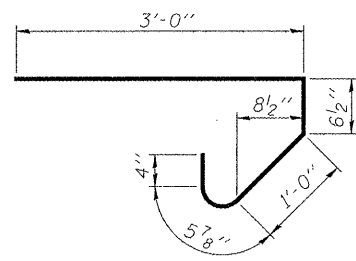
(Dimensions @ Right Angles to Rdwy.)
(Looking North)



SECTION A-A

Dimensions at right angles to abutment, except as shown.

Notes:
Reinforcement bars in diaphragm are billed with Superstructure on sheet 11 of 27.
Concrete in diaphragm is included with Concrete Superstructure on sheet 11 of 27.
For details of bars s₁(E) and v(E) see sheet 11 of 27.
The s(E) and s₁(E) bars shall be placed parallel to the beams. Spacing for these bars shall be at right angles to the beams.
v₂₀(E) bars are billed with Abutments on sheets 18 and 19 of 27.
Bars indicated thus 2x4-#6 etc. indicates 2 lines of bars with 4 lengths per line.
For location of holes thru web see sheet 16 of 27.



BAR s(E)

MIN. BAR LAP

#6 bar = 3'-4"

HURST-ROSCHKE ENGINEERS, INC.
HILLSBORO, ILLINOIS 62049
(217)532-3959 FAX (217)532-3212
HR JOB # 190-1785

HR
HURST-ROSCHKE
ENGINEERS, INC.

SI-DS2

7-1-10

FILE NAME =	USER NAME =	DESIGNED - JSP	REVISED -
		CHECKED - CJC	REVISED -
		DRAWN - UJ	REVISED -
		CHECKED - RVB	REVISED -

STATE OF ILLINOIS
DEPARTMENT OF TRANSPORTATION

INTEGRAL ABUTMENT DIAPHRAGM DETAILS
STRUCTURE NO. 036-0071

SHEET NO. 12 OF 27 SHEETS

F.A.P. RTE.	SECTION	COUNTY	TOTAL SHEETS	SHEET NO.
522	(14-1-B1) BR	HENDERSON	70	25
CONTRACT NO. 68298				
ILLINOIS FED. AID PROJECT				