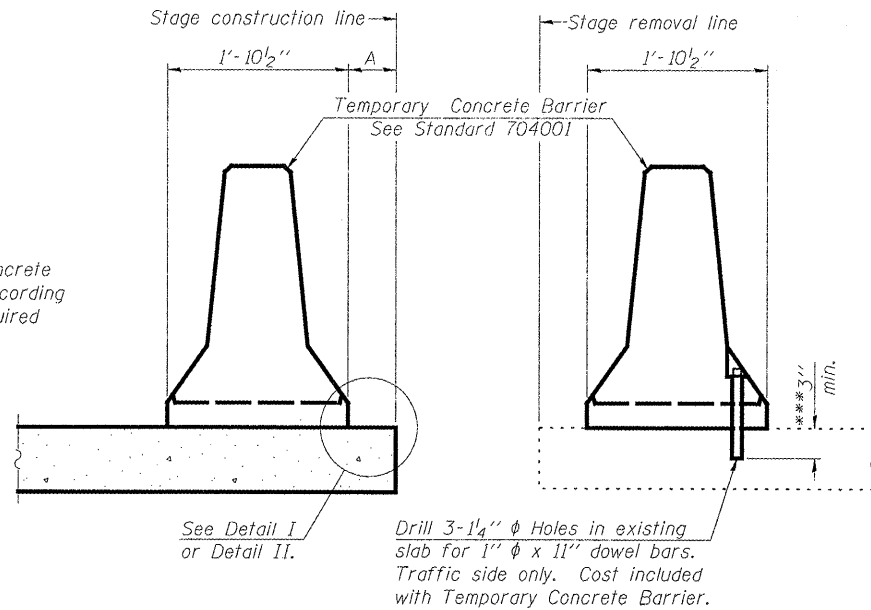


When "A" is 3'-6" or less, the temporary concrete barrier shall be anchored to the new slab according to Detail I or Detail II. No anchorage is required when "A" is greater than 3'-6".



NEW SLAB

EXISTING SLAB

SECTIONS THRU SLAB OR DECK BEAM

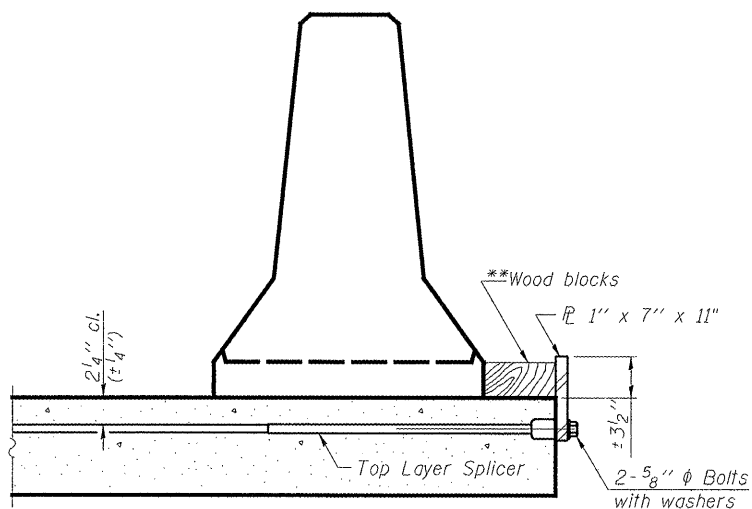
NOTES

Detail I - With Bar Splicer or Couplers:
Connect one (1) 1" x 7" x 11" steel \bar{L} to the top layer of couplers with 2-5/8" ϕ bolts screwed to coupler at approximate \bar{C} of each barrier panel.

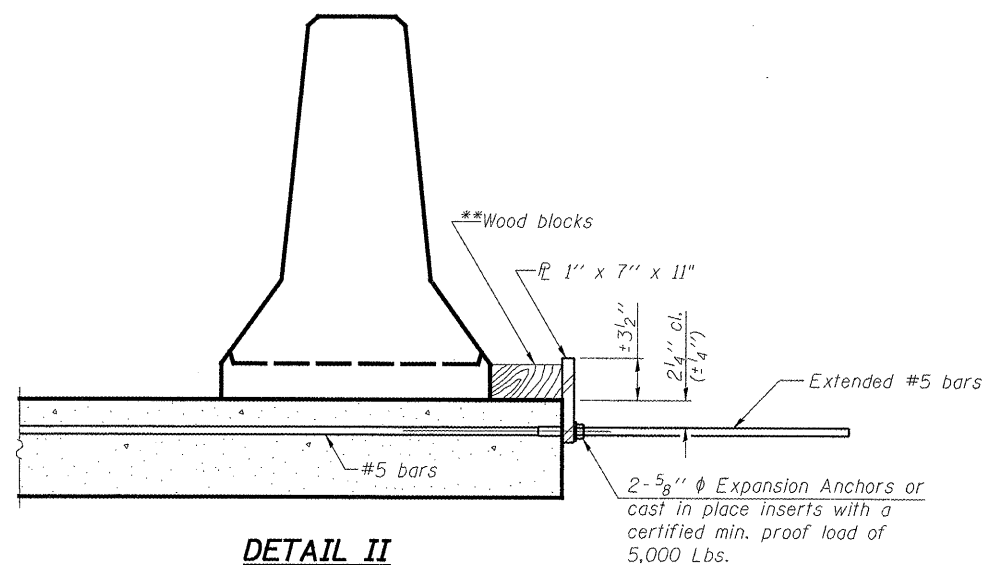
Detail II - With Extended Reinforcement Bars:
Connect one (1) 1" x 7" x 11" steel \bar{L} to the concrete slab or concrete wearing surface with 2-5/8" ϕ Expansion Anchors or cast in place inserts spaced between the top layer of reinforcement at approximate \bar{C} of each barrier panel.

Cost of anchorage is included with Temporary Concrete Barrier. The 1" x 7" x 11" plate shall not be removed until stage II construction forms and all reinforcement bars are in place and the concrete is ready to be placed.

*** Dimension shown is minimum required embedment into concrete. If hot-mix asphalt wearing surface is present, minimum embedment shall be in addition to wearing surface depth.

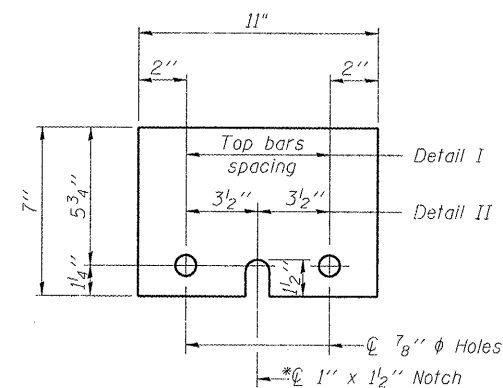


DETAIL I



DETAIL II

** Wood blocks may be omitted when required to provide minimum stage traffic lane width. When the wood blocks are omitted, the concrete barrier shall be in direct contact with the steel retainer plate.



STEEL RETAINER \bar{L} 1" x 7" x 11"

* Required only with Detail II

HURST-ROSCHE ENGINEERS, INC.
HILLSBORO, ILLINOIS 62049
(217)532-3959 FAX (217)532-3212
HR JOB # 190-1785

HR
HURST-ROSCHE
ENGINEERS, INC.

R-27

7-1-10

FILE NAME *	USER NAME *	DESIGNED - JSP	REVISED -
		CHECKED - CJC	REVISED -
PLOT SCALE *		DRAWN - UJ	REVISED -
PLOT DATE *		CHECKED - RVB	REVISED -

STATE OF ILLINOIS
DEPARTMENT OF TRANSPORTATION

TEMPORARY CONCRETE BARRIER FOR STAGE CONSTRUCTION
STRUCTURE NO. 036-0071

F.A.P. RTE.	SECTION	COUNTY	TOTAL SHEETS	SHEET NO.
808	94BR-1	CHAMPAIGN	70	17
CONTRACT NO. 70582				

SHEET NO. 4 OF 19 SHEETS

ILLINOIS FED. AID PROJECT