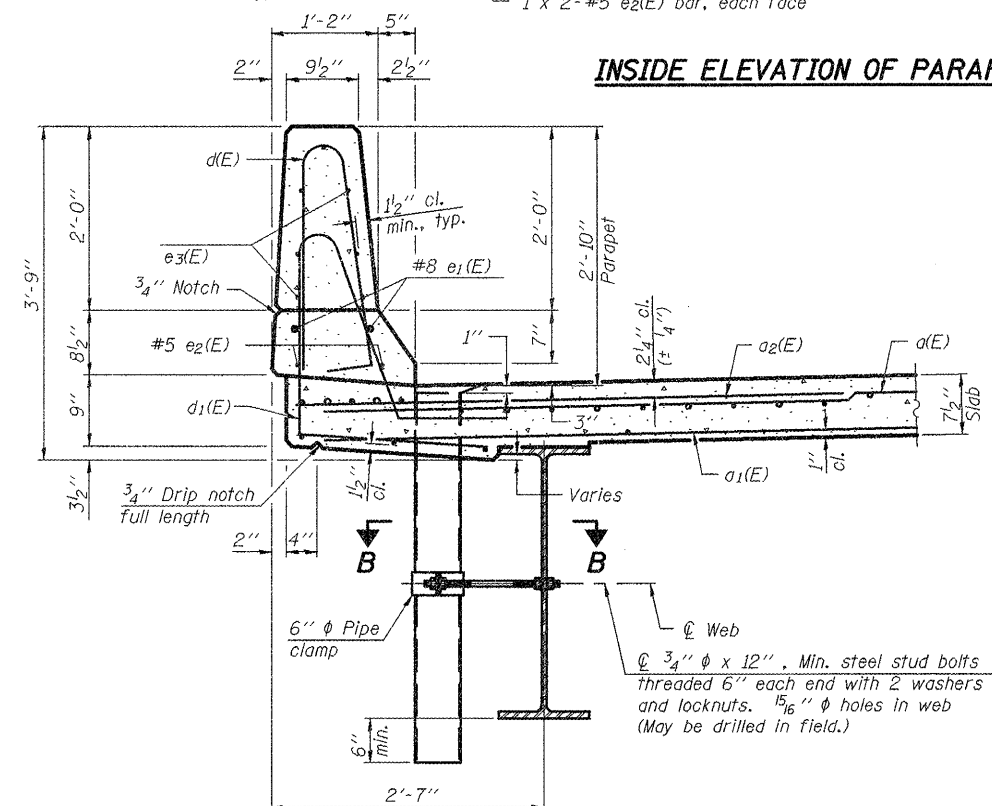
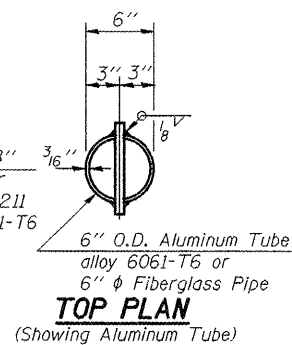
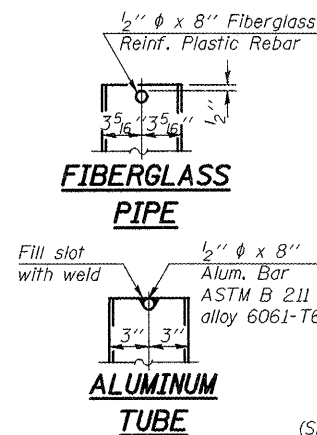
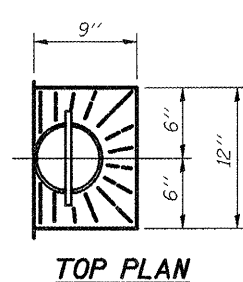
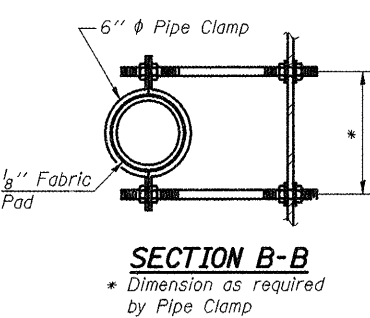


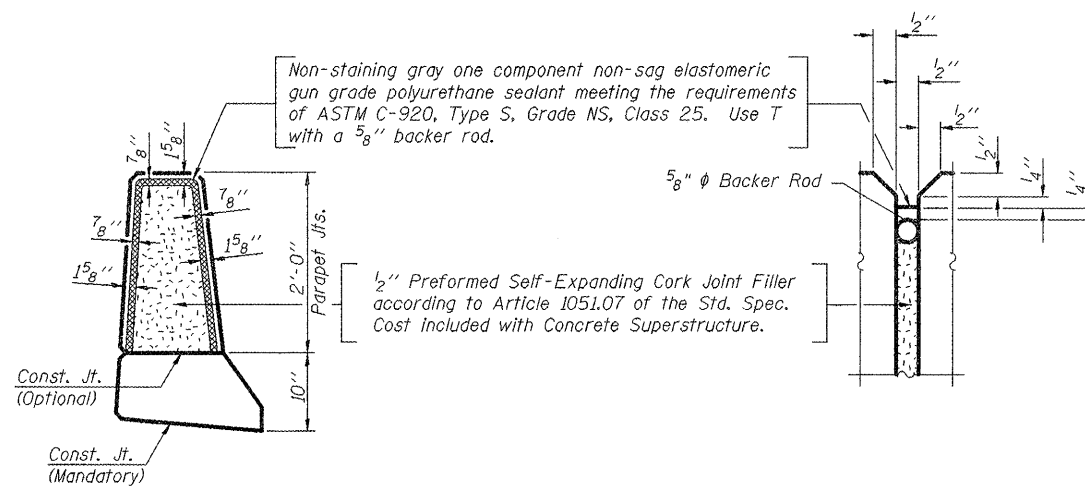
INSIDE ELEVATION OF PARAPET



SECTION THRU PARAPET

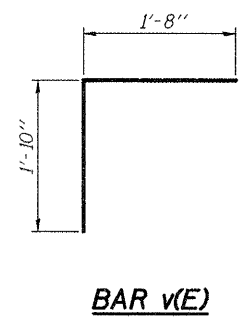
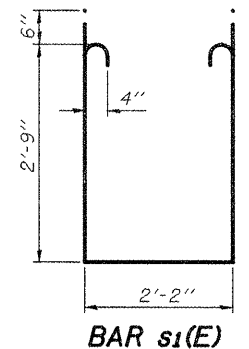
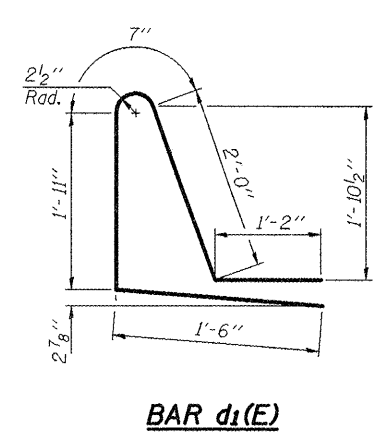
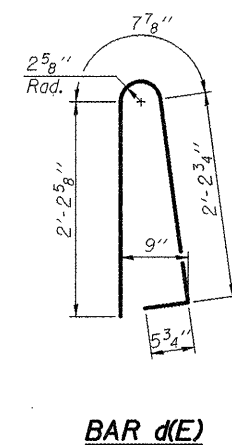


Non-staining gray one component non-sag elastomeric gun grade polyurethane sealant meeting the requirements of ASTM C-920, Type S, Grade NS, Class 25. Use T with a 5/8" backer rod.



PARAPET JOINT DETAILS

Notes:
Floor drains need not be painted.
Fiberglass pipe shall conform to ASTM D 2996, with short-time rupture strength hoop tensile stress of 30,000 p.s.i. minimum.



Note:
All edges shall have 3/4" chamfer.

MIN. BAR LAPS
#4 bar = 1'-4"
#5 bar = 1'-8"
#8 bar = 3'-5"

SUPERSTRUCTURE BILL OF MATERIAL

Bar	No.	Size	Length	Shape
d(E)	202	#5	17'-1"	U
a1(E)	152	#5	16'-9"	U
a2(E)	102	#6	4'-6"	U
b(E)	80	#5	32'-2"	U
b1(E)	96	#5	22'-0"	U
m(E)	8	#6	16'-6"	U
m1(E)	12	#6	17'-3"	U
m2(E)	24	#6	8'-2"	U
m3(E)	8	#6	5'-9"	U
m4(E)	4	#6	2'-3"	U
m5(E)	4	#6	2'-8"	U
d(E)	144	#5	5'-7"	L
d1(E)	144	#5	7'-2"	L
e1(E)	12	#8	23'-2"	U
e2(E)	8	#5	32'-2"	U
e3(E)	56	#4	15'-4"	U
s(E)	76	#5	6'-10"	U
s1(E)	64	#4	8'-8"	U
v(E)	68	#5	3'-6"	U
Reinforcement Bars, Epoxy Coated		Pound	17,390	
Concrete Superstructure		Cu. Yds.	87.5	

Reinforcement bars designated (E) shall be epoxy coated.
Bars indicated thus 1 x -#5 etc. indicates 1 line of bars with lengths per line.



STATE OF ILLINOIS
DEPARTMENT OF TRANSPORTATION

SUPERSTRUCTURE DETAILS
IL 94 OVER DIXON CREEK S.N. 036-0054

F.A.P. RTE.	SECTION	COUNTY	TOTAL SHEETS	SHEET NO.
534	109B (BR2)	HENDERSON	88	47
CONTRACT NO. 68083				

FILE NAME	USER NAME	DESIGNED	REVISED
D468083-sht-plan.dgn	johnsonv	-	-
PLOT SCALE	CHECKED	DATE	REVISED
100.4566' / 1in	-	8/26/2011	-

SCALE: SHEET NO. 7 OF 15 SHEETS STA. 347+36

ILLINOIS FED. AID PROJECT