

F.A.P. RTE.	SECTION	COUNTY	TOTAL SHEETS	SHEET NO.
534	109B (BR-2), 109B (BR-3)	HENDERSON	88	1
ILLINOIS			CONTRACT NO. 68083	

FOR INDEX OF SHEETS, SEE SHEET NO. 2

STATE OF ILLINOIS
DEPARTMENT OF TRANSPORTATION
DIVISION OF HIGHWAYS

**PROPOSED
HIGHWAY PLANS**

F.A.P. ROUTE 534 (IL 94)
SECTION (109B)BR; (109-B)BR; 109RS-6
BRIDGE REPLACEMENT
PROJECT ACF-0534(010)
HENDERSON COUNTY

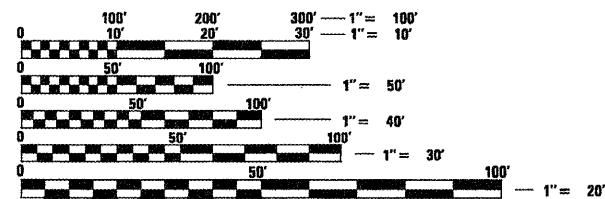
C-94-103-00

STANDARDS

HIGHWAY STANDARDS DISTRICT CADD STANDARDS

280001-05 701006-03	205001-D4
420001-07 701011-02	280001-D4
420401-08 701201-04	280101-D4
442201-03 701301-04	281001-D4
515001-03 701306-03	406101-D4
542401-01 701311-03	406301-D4
609006-05 701321-11	420401-D4
630001-09 701326-04	440001-D4
630301-05 701901-01	601101-D4
631031-09 704001-06	630101-D4
635001-01 720011-01	635101-D4
635006-03 780001-02	667101-D4
635011-02 781001-03	780001-D4
701001-02 601101-01	

ADT = 1700 (2000)
C: ZONE = 18'
LB = 8.79'
CHART 38-6C
A MINOR ARTERIAL (RURAL)
DESIGN (POSTED) SPEED: 55 MPH



FULL SIZE PLANS HAVE BEEN PREPARED USING STANDARD ENGINEERING SCALES. REDUCED SIZED PLANS WILL NOT CONFORM TO STANDARD SCALES. IN MAKING MEASUREMENTS ON REDUCED PLANS, THE ABOVE SCALES MAY BE USED.

J.U.L.I.E.
JOINT UTILITY LOCATION INFORMATION FOR EXCAVATION
1-800-892-0123
OR 811

PROJECT ENGINEER: CHRISTOPHER MAUSHARD (309) 671-3453
LIASON ENGINEER: MIKE MOHAMED (309)671-3462

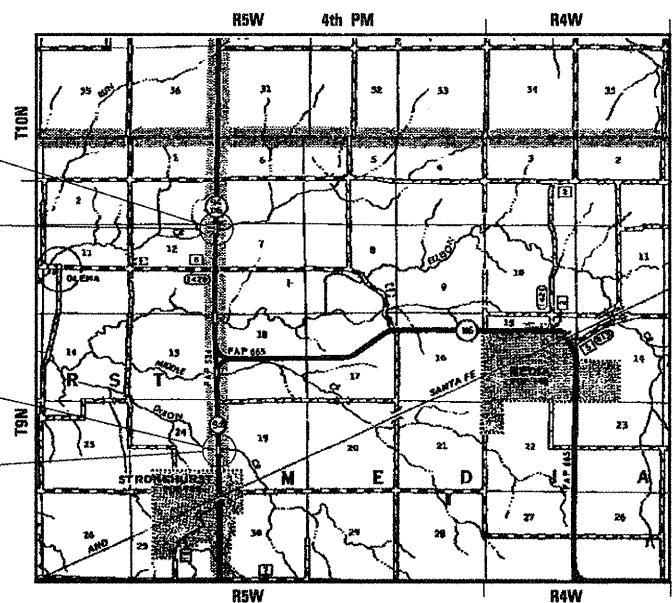
CONTRACT NO. 68083
CATALOG NO. 032263-00D

PROJECT BEGINS
STA. 212 + 10.00
WOLF CREEK
(S.N. 036-0055)

PROJECT ENDS
STA. 219 + 40.00

PROJECT BEGINS
STA. 342 + 15.00
DIXON CREEK
(S.N. 036-0054)

PROJECT ENDS
STA. 351 + 15.00



LOCATION MAP
1" = 1 MILE

THIS WORK INCLUDES REMOVAL OF DIXON AND WOLF CREEK STRUCTURES (036-0011), (036-0033) AND REPLACEMENT BY TWO 35'-2" x 63'-0" LONG STRUCTURES W/CONCRETE DECK ON STEEL STGRS. RAISING EXISTING VERTICAL PROFILE APPROXIMATELY 2.5' AND OTHER APPROACH AND COLLATERAL WORK.



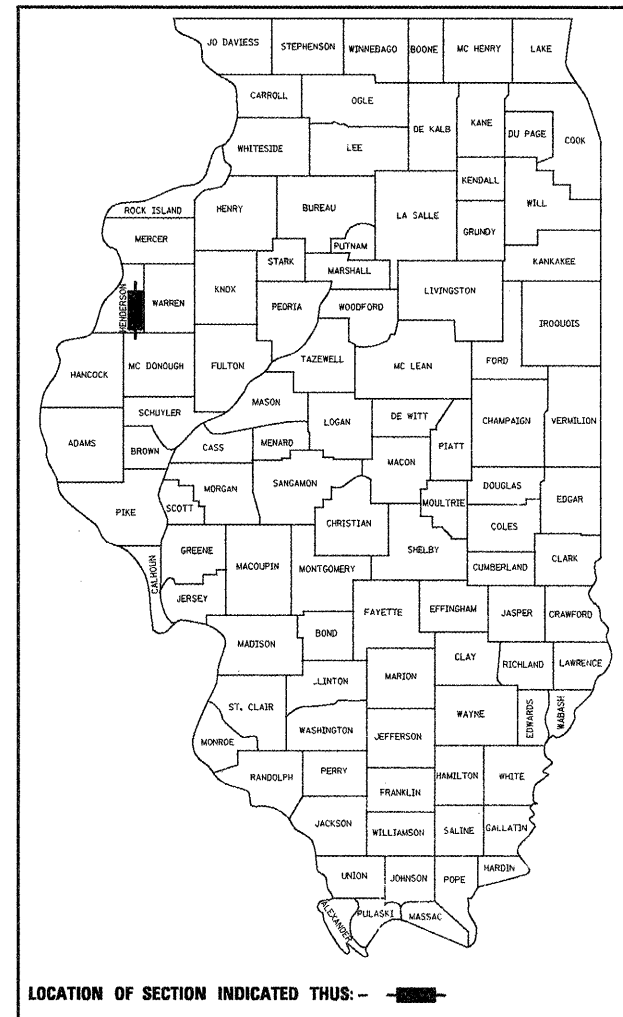
NPDES PERMIT REQUIRED

PLANS PREPARED BY:

Cochran & Wilken, Inc.
Consulting Engineers & Scientists
5201 South Sixth Street Road, Springfield, IL 62708-6148
Ph. (217) 525-6300

GROSS LENGTH = 1,630 FT. = 0.309 MILES
NET LENGTH = 1,630 FT. = 0.309 MILE

D-94-069-00



LOCATION OF SECTION INDICATED THIS: - [black box] -

STATE OF ILLINOIS
DEPARTMENT OF TRANSPORTATION
DIVISION OF HIGHWAYS

SUBMITTED Aug 25 20 11
Joseph E. Cowen
DERUTY DIRECTOR OF HIGHWAYS, REGION ENGINEER

Oct 14 20 11
Scott E. Stitt, P.E.
Acting ENGINEER OF DESIGN AND ENVIRONMENT

Oct 14 20 11
Christine M. Reed
DIRECTOR OF HIGHWAYS, CHIEF ENGINEER

PRINTED BY THE AUTHORITY
OF THE STATE OF ILLINOIS

DATE 11-28-2008

BY _____

EXPIRES 11-30-2008