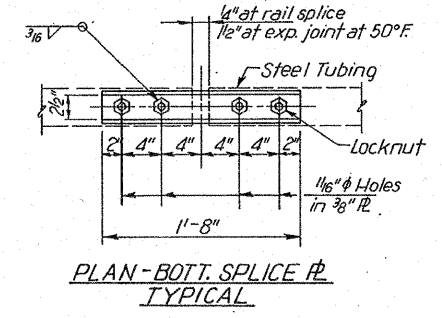
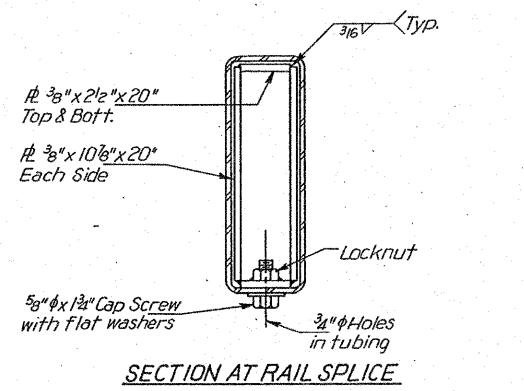
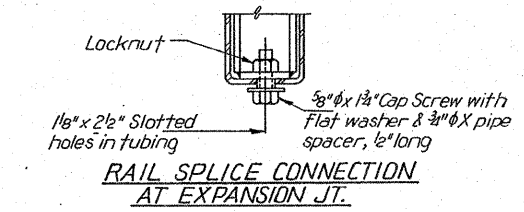
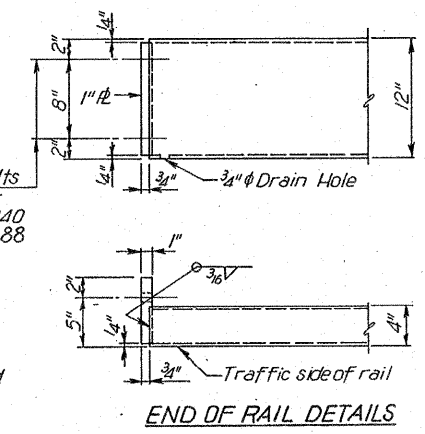
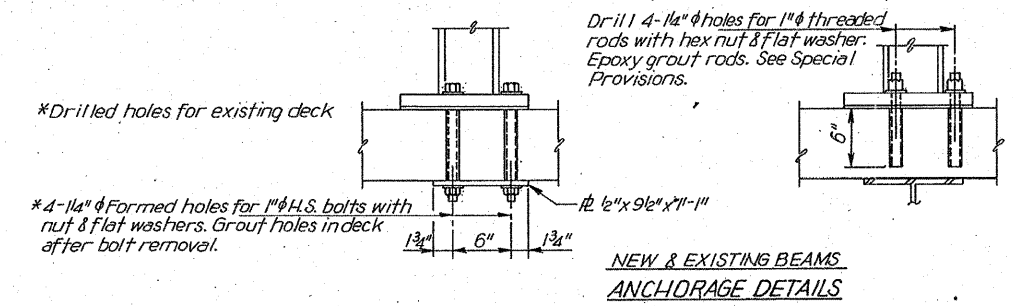
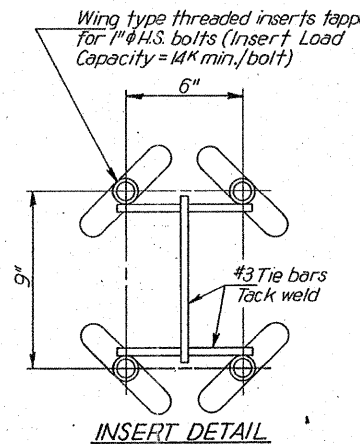
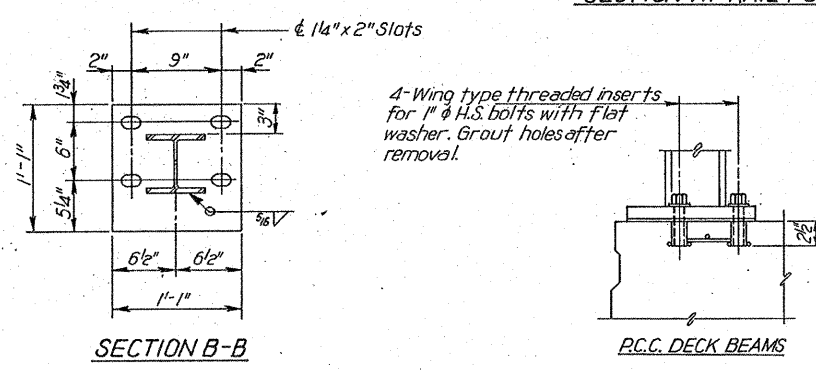
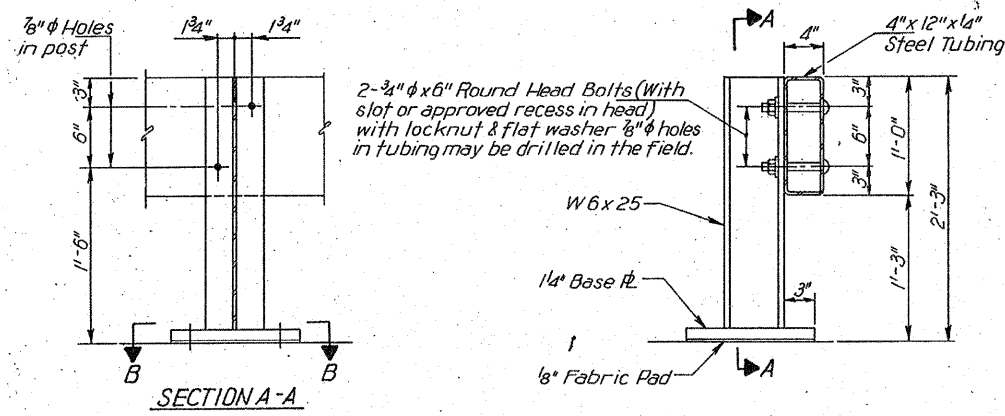


STATE OF ILLINOIS
DEPARTMENT OF TRANSPORTATION

ROUTE NO.	SECTION	COUNTY	TOTAL SHEETS	SHEET NO.	SHEET NO. 6
F.A. 17	126B-1BR	DEKALB	16	14	SHEETS 8
FED. ROAD DIST. NO. 1	ILLINOIS	FED. AID PROJECT			



NOTES
Follow structural steel tubing shall conform to the requirements of A.S.T.M. designation A-500 Grade B Structural Steel Tubing.
All other steel shapes and plates shall conform to the requirements of A.A.S.H.T.O. M-183 except posts shall conform to A.A.S.H.T.O. M-223 Grade 50.
Bolts, cap screws, and nuts shall conform to the requirement of A.S.T.M. designation A-307 except for high strength bolts, threaded rods, nuts and washers noted which shall conform to A.A.S.H.T.O. M-164.
The bridge rail shall receive one shop coat of a steel prime paint.
The 1" high strength bolts or threaded rods used to connect the rail posts shall be tightened in accordance with Article 507.04(g)(3) of the Standard Specifications.
See Special Provisions for Temporary Bridge Rail.

BILL OF MATERIAL

Item	Unit	Quantity
Temporary Bridge Rail	Lin. Ft.	54

DESIGNED	J.M.P.
CHECKED	S.F.
DRAWN	K.A.C.
CHECKED	J.M.P.

REVISIONS	
NAME	DATE

TEMPORARY BRIDGE RAIL DETAILS
F.A. ROUTE 17 (ILL. 64)
SECTION 126 (B-1) R
DEKALB COUNTY
STA. 78+50.00
SCALE: VERT. HORIZ. DATE 7-22-81