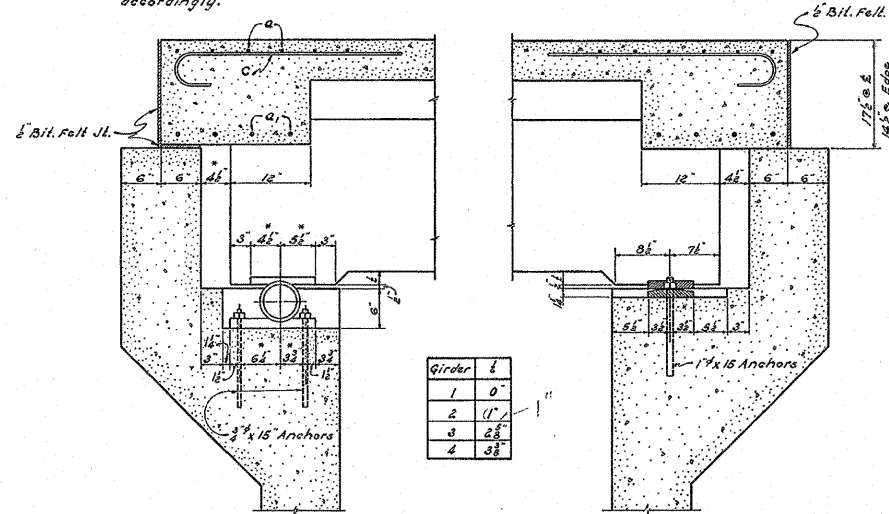


STATE OF ILLINOIS
DEPARTMENT OF PUBLIC WORKS & BUILDINGS
DIVISION OF HIGHWAYS

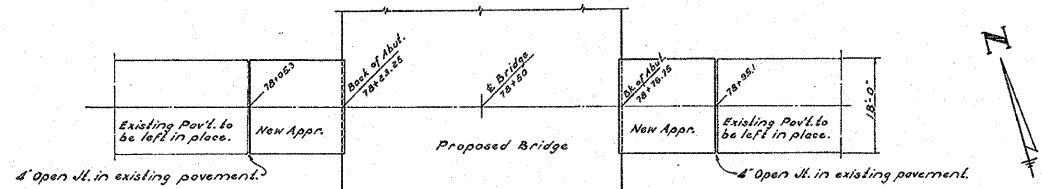
ROAD DIST. NO.	SECTION	COUNTY	TOTAL SHEETS	SHEET NO.
64	126-B-1	DeKalb	10	8
SHEET NO. 2 4 SHEETS				

Dimensions marked * in section of West Abutment are based on a temperature of 50° F. and with out abutment movement. For other temperatures, or if abutment has moved, these dimensions shall be adjusted accordingly.



SECTION AT WEST ABUTMENT

SECTION AT EAST ABUTMENT



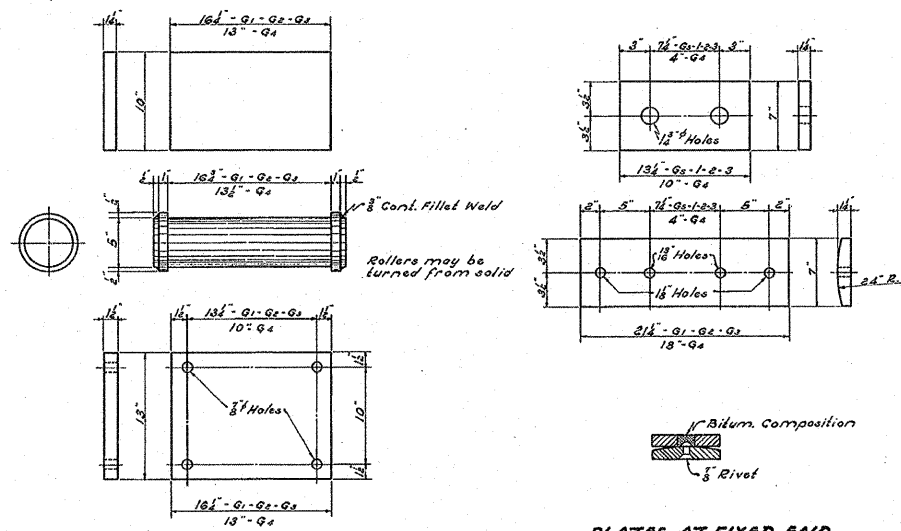
APPROACH LAYOUT

Existing Pav't. shall be removed between Stations 78+05.3 and 78+05.1
Pavement Removal..... 78 sq.yds.

QUANTITIES IN APPROACHES
R.C.C. Pavement (16 1/2'-10 1/2'-16 1/2')..... 74.5 sq.yds.
Reinforcing Steel..... 4850 lbs.

GENERAL NOTES

Class X Concrete shall be used thru out.
The concrete floor shall be finished according to Art. 57.3 (c) of the specifications.
Hollow tile shall be given a heavy coat of asphalt before sidewalk is placed.
Copper seal shall be 16 oz. cold rolled annealed copper with outside legs perforated. Cost of copper seal to be included in unit price bid for Class X Concrete. If copper seal is not in one piece splices shall be soldered or brazed.
The Contractor shall make allowance for the deflection of forms and the shrinkage and settlement of falsework in addition to the allowance for deadload deflections and camber. Falsework shall not be removed until the concrete has attained a minimum modulus of rupture of 650 lbs. per sq. in. and not less than 7 days from the time the pouring of the concrete is completed. The concrete handrail shall not be poured until after the falsework has been removed.
The coarse aggregate to be used in handrail concrete shall be absolutely free of chert, flint, limonite, lignite and soft sandstone. Material for rollers see Special Provisions. Plates shall be structural steel. For plates in contact with rollers, the edges adjacent to rollers shall be rolled, square cut or finished. Paint rollers and plates one shop coat and two field coats. Surface of plates in contact with concrete shall not be painted.
The approach slabs with the exception of length, shall conform to Details of Bridge Approaches (Std. 1638).
The Contractor shall furnish borrow for temporary embankments according to Sec. 16 of the Standard Specifications. (as revised, effective Aug. 2, 1937).

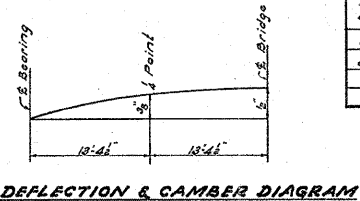


ROLLERS & PLATES AT EXPANSION END

PLATES AT FIXED END

TOTAL BILL OF MATERIAL

Item	Quantity
Class X Concrete	cu.yds. 297.3
Handrail Concrete	cu.yds. 6.3
Reinforcing Steel	lbs. 64970
Structural Steel	lbs. 2810
Hollow Pl. or Wall Tile	sq.ft. 416
Wire Fabric (30"/100")	sq.yds. 583
R.C.C. Pavement (16 1/2'-10 1/2'-16 1/2')	sq.yds. 74.5
Untreated Lumber	ft. B.M. 8500
Hardware	lbs. 605
3/4" Steel Rods	lbs. 540
Untreated Piling - 25'lg.	lin.ft. 1100
Untreated Piling - 20'lg.	lin.ft. 1920
Temporary Fencing	rods 21
Remov. & Replac. of Exist. Fence	rods 20
Tree Removal (In units of inch diameter)	66
Moving Exist. Superstructure	ea. 1
Remov. of Exist. Substructure	ea. 1
Remov. of Temporary Bridge	ea. 1
Pav't. & Driveway Removal	sq.yds. 78
Earth Excavation	cu.yds. 402
Borrow Excavation	cu.yds. 478
Traffic Bound Gravel Or Stone Surface Course	cu.yds. 80
Wire Fabric Rd. Guard Removal and Replacement	lin.ft. 109
Earth Shoulders	sq.yds. 117
Unin. Test Piles	ea. 2



D.L. DEFLECTION & CAMBER DIAGRAM

COMPUTED	3/1 P. Owen	EXAMINED	8-3-1937
CHECKED	M. G. Carter	DESIGNED	A. F. Burch
DRAWN	H. O. L. L. L. L.	CHECKED	M. G. Carter
CHECKED	M. G. Carter	APPROVED	Chief Highway Engineer
SPECIAL ASSEMBLED			
CHECKED			

SOUTH BRANCH OF KISHWAUKEE RIVER
S.B.I. RTE 64 SEC. 126-B-1
DEKALB COUNTY
STA. 78+50