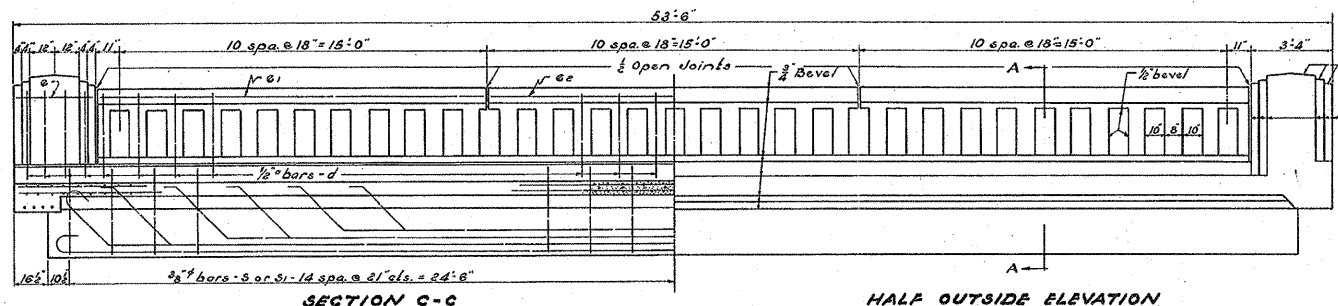
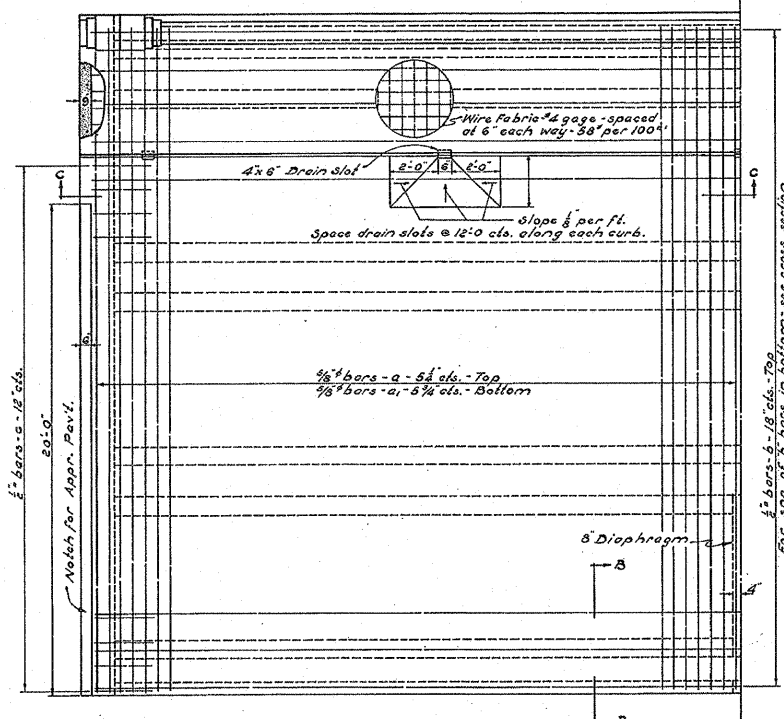


STATE OF ILLINOIS  
DEPARTMENT OF PUBLIC WORKS & BUILDINGS  
DIVISION OF HIGHWAYS

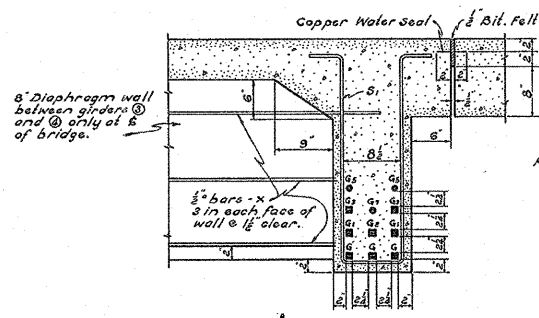
|                   |         |        |              |           |
|-------------------|---------|--------|--------------|-----------|
| ROAD DISTRICT NO. | SECTION | COUNTY | TOTAL SHEETS | SHEET NO. |
| 64                | 126B-1  | DeKalb | 10           | 7         |
| SHEETS            |         |        |              |           |



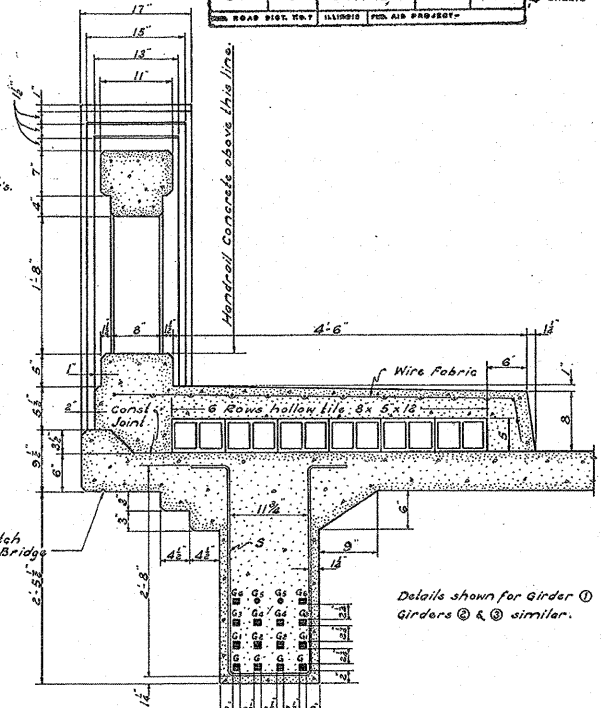
HALF OUTSIDE ELEVATION



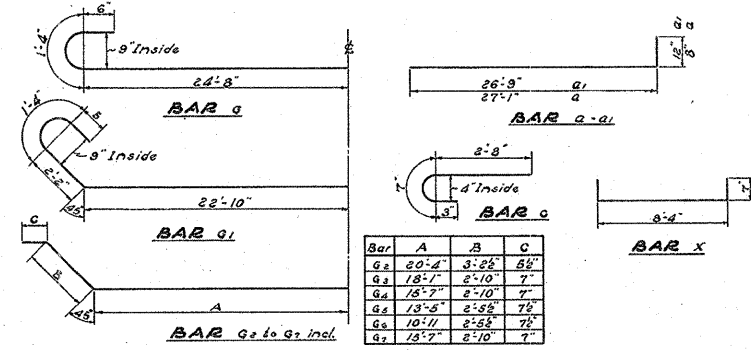
QUARTER PLAN



SECTION - B-B



SECTION A-A



BAR DETAILS

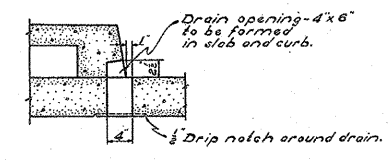
SUPERSTRUCTURE  
BILL OF MATERIAL

| Bar No. | Size | Length |
|---------|------|--------|
| a       | 240  | 27'-9" |
| a1      | 290  | 27'-9" |
| b       | 192  | 28'-0" |
| c       | 88   | 3'-6"  |
| d       | 80   | 3'-6"  |
| e       | 8    | 3'-0"  |
| e1      | 8    | 15'-6" |
| e2      | 4    | 14'-6" |
| g       | 30   | 53'-0" |
| g1      | 16   | 53'-6" |
| g2      | 14   | 48'-0" |
| g3      | 16   | 43'-0" |
| g4      | 12   | 38'-0" |
| g5      | 16   | 33'-0" |
| g6      | 12   | 28'-0" |
| g7      | 2    | 38'-0" |
| s       | 174  | 7'-3"  |
| s1      | 58   | 7'-0"  |
| x       | 12   | 9'-6"  |

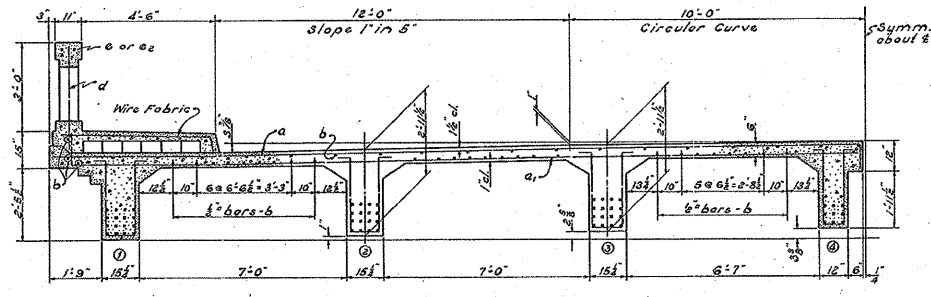
  

| Material               | Quantity      |
|------------------------|---------------|
| Class X Concrete       | cu yds. 121.2 |
| Handrail Concrete      | cu yds. 6.3   |
| Reinforcing Steel      | lbs. 40670    |
| Structural Steel       | lbs. 2810     |
| Hollow Floor Wall Tile | sq. ft. 418   |
| Wire Fabric            | sq. ft. 883   |

For General Notes see sheet No. 2



SECTION THRU DRAIN



HALF CROSS SECTION

|                   |                   |          |                               |
|-------------------|-------------------|----------|-------------------------------|
| COMPUTED          | <i>H.L. Owen</i>  | EXAMINED | <i>H.F. Swartz</i>            |
| CHECKED           | <i>M.J. Cotto</i> | PASSED   | <i>M. J. Cotto</i>            |
| DRAWN             | <i>M.J. Cotto</i> | APPROVED | <i>Chief Highway Engineer</i> |
| CHECKED           | <i>M.J. Cotto</i> |          |                               |
| SPECIAL ASSEMBLED |                   |          |                               |
| CHECKED           |                   |          |                               |

SO. BRANCH OF KISHWAUKEE R.  
S.B.1. RTE. 64 SEC. 126 B-1  
DEKALB COUNTY  
STA. 78+50