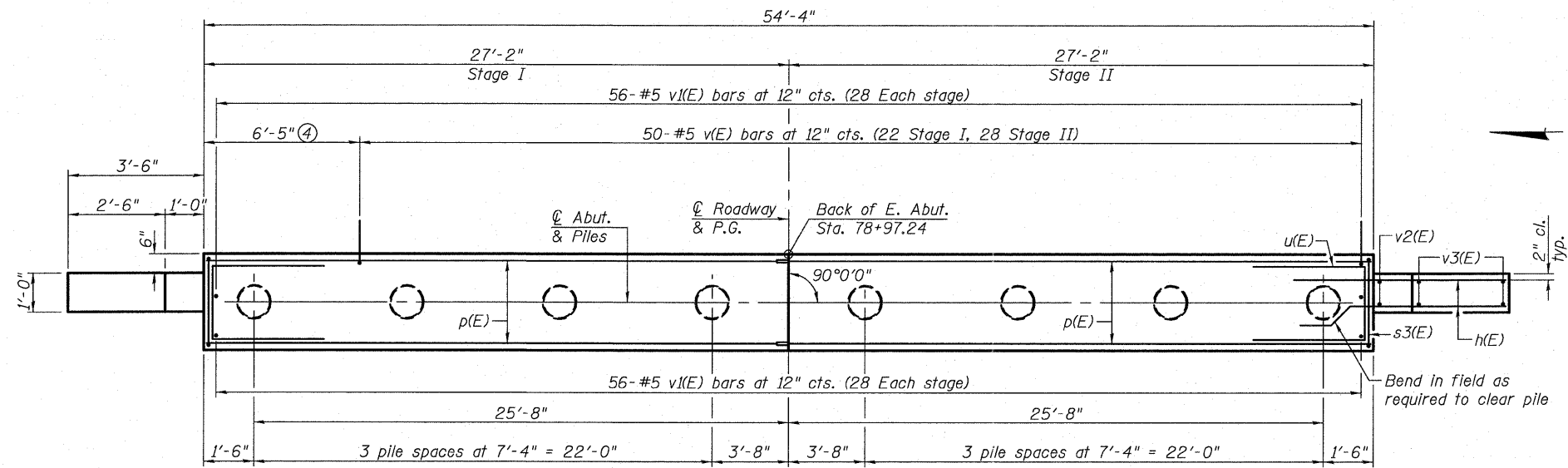
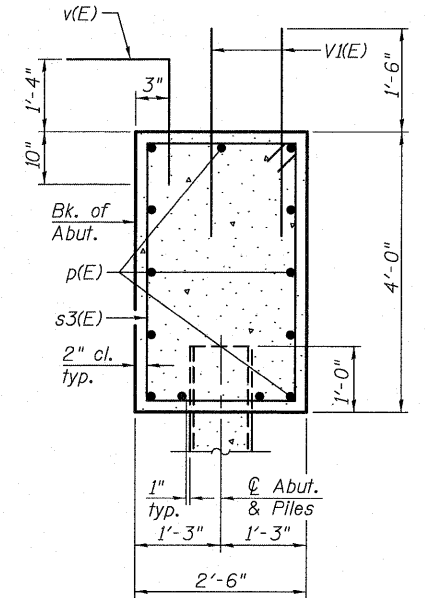


**ELEVATION**  
(Looking East)



**PLAN**

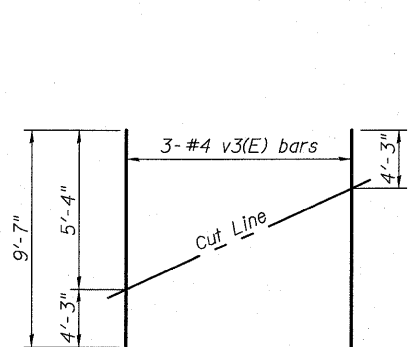


**SEC. THRU ABUT.**

**BILL OF MATERIAL**

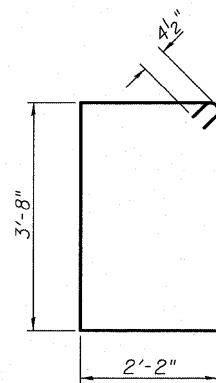
Bar	No.	Size	Length	Shape
h(E)	32	#4	5'-11"	—
p(E)	26	#7	26'-10"	—
s3(E)	60	#4	12'-5"	□
u(E)	10	#6	10'-11"	—
v(E)	50	#5	4'-1"	└
v1(E)	112	#5	3'-0"	—
v2(E)	4	#4	5'-5"	—
v3(E)	6	#4	9'-7"	—
Structure Excavation	Cu. Yd.	89		
Concrete Structures	Cu. Yd.	21.5		
Reinforcement Bars, Epoxy Coated	Pound	2,830		
Furnishing Metal Shell Piles 14" x 0.250"	Foot	210		
Driving Piles	Foot	210		
Test Pile Metal Shells	Each	1		

- Notes:
- For details of piles and Metal Shell Reinforcement at Abutments, see sheet 17 of 20.
  - For details of Bar Splicers, see sheet 18 of 20.
  - All edges shall have standard 3/4" chamfer.
  - v(E) bars not used outside the limits of Bridge Approach Slab.

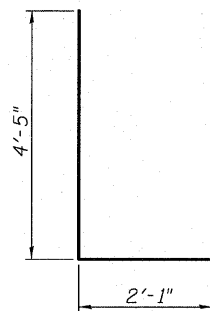


**FIELD CUTTING DIAGRAM**

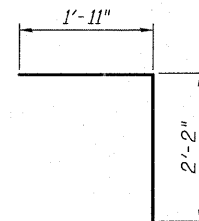
Order v3(E) bars full length. Cut as shown and use remainder of bars in opposite face.



**BAR s3(E)**



**BAR u(E)**



**BAR v(E)**

**PILE DATA**

Type: Metal Shell - 14 in. dia x 0.250 in. walls  
 Nominal Required Bearing: 199 kips  
 Factored Resistance Available: 109 kips  
 Est. Length: 30 ft  
 No. Production Piles: 7  
 No. Test Piles: 1



USER NAME =  
 PLOT SCALE =  
 PLOT DATE =

DESIGNED - JAD  
 CHECKED - SJN  
 DRAWN - JAD  
 CHECKED - SJN

REVISED -  
 REVISED -  
 REVISED -  
 REVISED -

**STATE OF ILLINOIS  
 DEPARTMENT OF TRANSPORTATION**

**EAST ABUTMENT DETAILS  
 STRUCTURE NO. 019-0048**

SHEET NO. 15 OF 20 SHEETS

F.A.P. RTE.	SECTION	COUNTY	TOTAL SHEETS	SHEET NO.
307	126(B)-1BR	DEKALB	62	33
CONTRACT NO. 66987			ILLINOIS FED. AID PROJECT	