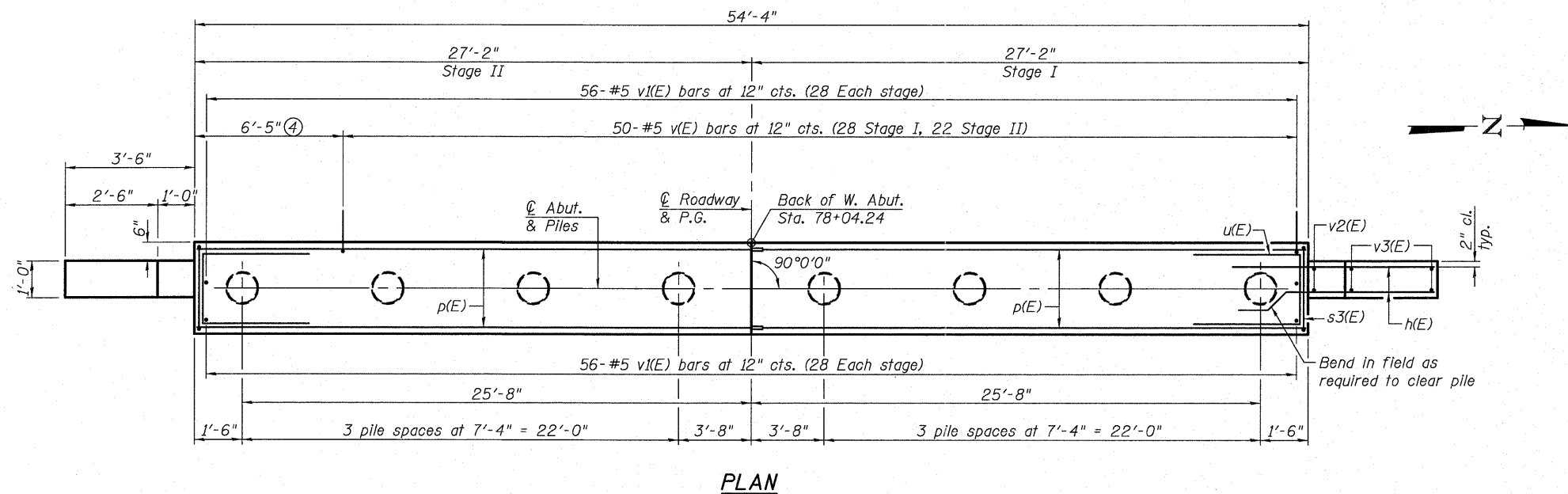


SEC. THRU ABUT.

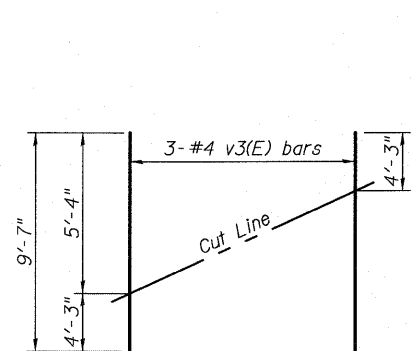


PLAN

BILL OF MATERIAL

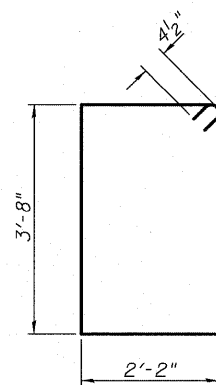
Bar	No.	Size	Length	Shape
h(E)	32	#4	5'-11"	—
p(E)	26	#7	26'-10"	—
s3(E)	60	#4	12'-5"	□
u(E)	10	#6	10'-11"	—
v(E)	50	#5	4'-1"	└
v1(E)	112	#5	3'-0"	—
v2(E)	4	#4	5'-5"	—
v3(E)	6	#4	9'-7"	—
Structure Excavation	Cu. Yd.	88		
Concrete Structures	Cu. Yd.	21.5		
Reinforcement Bars, Epoxy Coated	Pound	2,830		
Furnishing Metal Shell Piles 14" x 0.250"	Foot	224		
Driving Piles	Foot	224		

- Notes:
- For details of piles and Metal Shell Reinforcement at Abutments, see sheet 17 of 20.
  - For details of Bar Splicers, see sheet 18 of 20.
  - All edges shall have standard 3/4" chamfer.
  - v(E) bars not used outside the limits of Bridge Approach Slab.

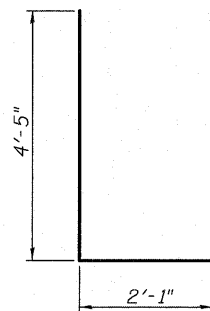


FIELD CUTTING DIAGRAM

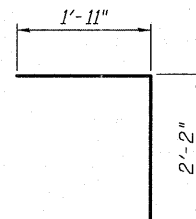
Order v3(E) bars full length. Cut as shown and use remainder of bars in opposite face.



BAR s3(E)



BAR u(E)



BAR v(E)

PILE DATA

Type: Metal Shell - 14 in. dia x 0.250 in. walls  
 Nominal Required Bearing: 198 kips  
 Factored Resistance Available: 109 kips  
 Est. Length: 28 ft  
 No. Production Piles: 8



USER NAME =  
 PLOT SCALE =  
 PLOT DATE =

DESIGNED - JAD  
 CHECKED - SJN  
 DRAWN - JAD  
 CHECKED - SJN

REVISÉ -  
 REVISÉ -  
 REVISÉ -  
 REVISÉ -

STATE OF ILLINOIS  
 DEPARTMENT OF TRANSPORTATION

WEST ABUTMENT DETAILS  
 STRUCTURE NO. 019-0048

SHEET NO. 14 OF 20 SHEETS

F.A.P. RTE.	SECTION	COUNTY	TOTAL SHEETS	SHEET NO.
307	126(B)-1/BR	DEKALB	62	32
				CONTRACT NO. 66987
ILLINOIS FED. AID PROJECT				