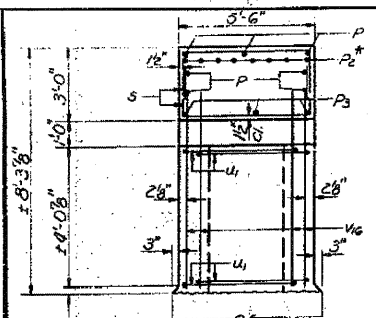
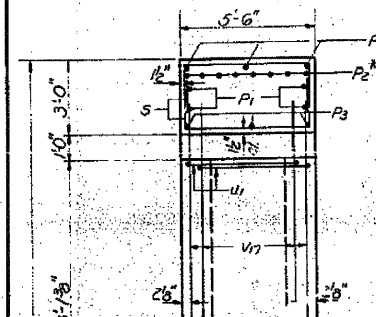


STATE OF ILLINOIS
DEPARTMENT OF TRANSPORTATION

PROJECT NO.	CONTRACT	SECTION	SHEET NO.	TOTAL SHEETS
646	12R-1	Whiteside	64	16
SHEET NO. 25				
26 SHEETS				



VIEW F-F

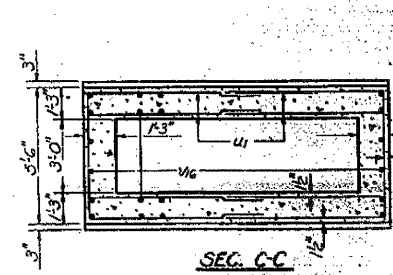
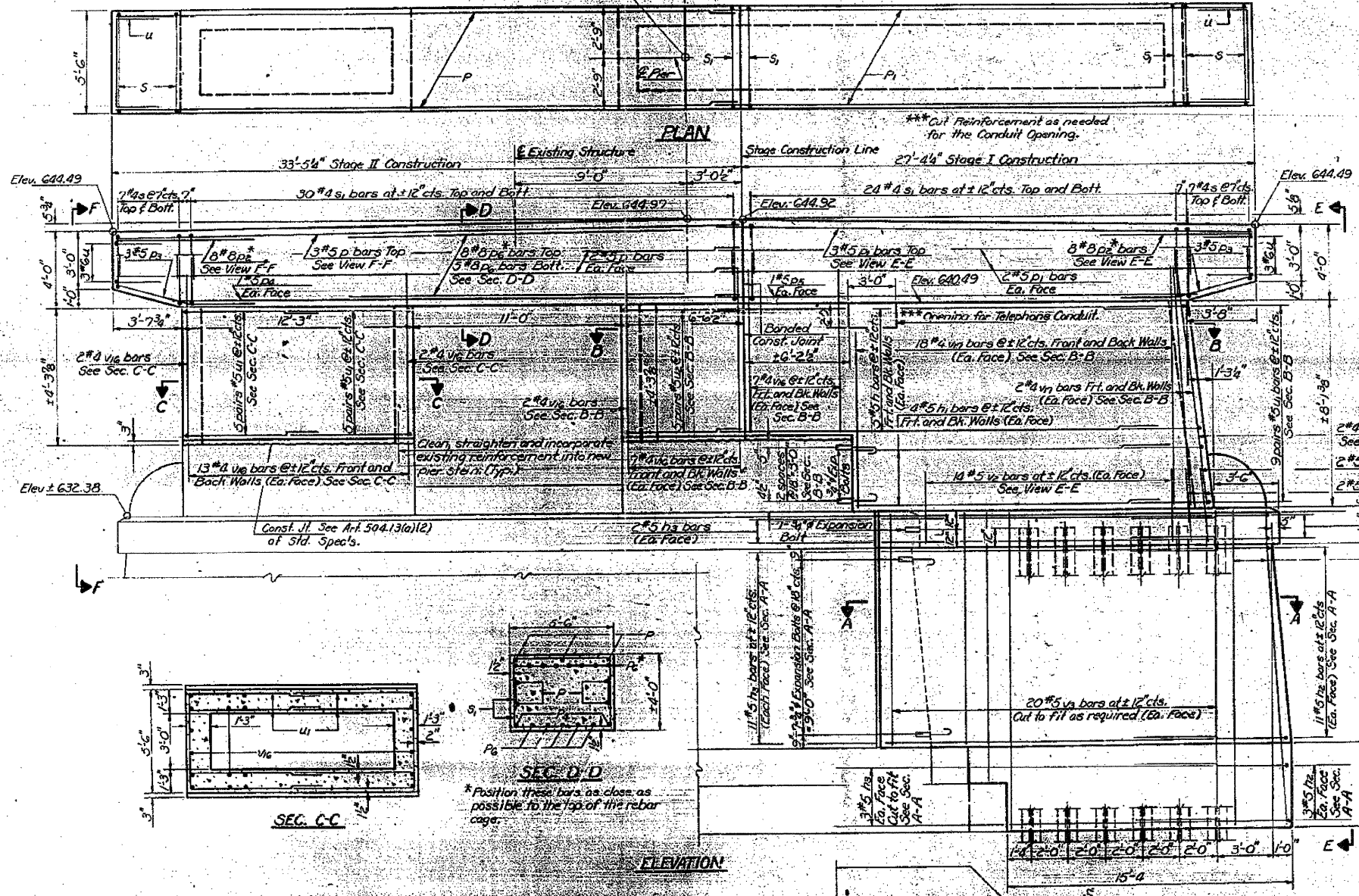


VIEW E-E

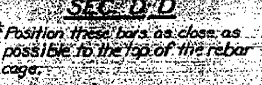
PILE DATA

Type: Steel HP 12x74
Capacity: Drive to Refusal
Est. Length: 17'
No. Req'd: 6

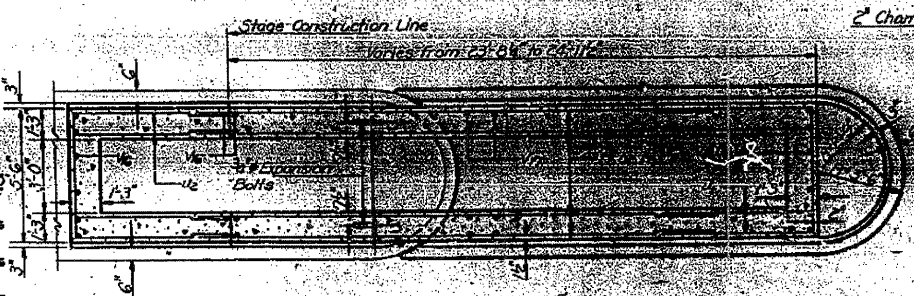
DESIGNED	DAW KRULL	EXAMINED	<i>Feb. 29 1920</i> <i>Carl E. Hammond</i>
CHECKED	<i>M. J. Ryan</i>	PASSED	
DRAWN	<i>Joe Sutherland</i>	APPROVED	
CHECKED	<i>MYR</i>		



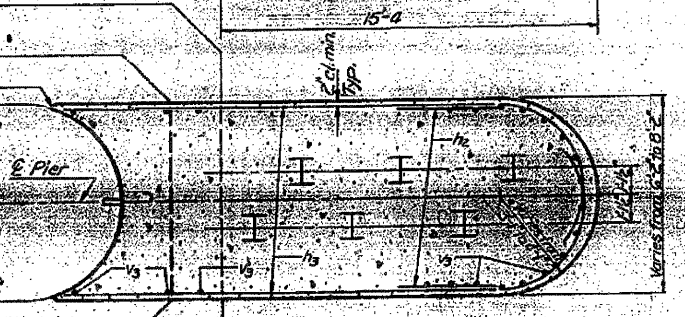
SEC. C-C



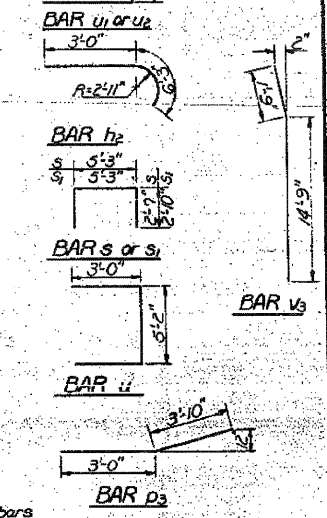
SEC. D-D



SEC. B-B



SEC. A-A



BILL OF MATERIAL

Bar	No.	Size	Length	Shape
h	20	#5	21'-4"	
h1	16	#5	14'-0"	
h2	32	#5	9'-3"	
h3	32	#5	18'-9"	
p	7	#5	33'-3"	
p1	7	#5	28'-8"	
p2	16	#8	7'-4"	
p3	6	#5	6'-10"	
p4	2	#5	29'-8"	
p5	2	#5	25'-1"	
p6	13	#8	18'-6"	
s	28	#4	10'-5"	
s1	108	#8	10'-11"	
u	6	#6	11'-2"	
u1	38	#5	17'-11"	
u2	10	#5	16'-11"	
v2	34	#5	3'-6"	
v3	52	#5	16'-6"	
v4	114	#4	5'-8"	
v7	62	#4	9'-6"	
Reinforcement Bars: Round 7110				
Class 2 Concrete: 164.3				
Expansion Bolts: 16				
Steel Piles HP 12x74: 6				
Cofferdam: Each 1				

PIER #11
FA. RT. 646 SEC. 12R-1
WHITESIDE COUNTY
STATION 14+12.40