

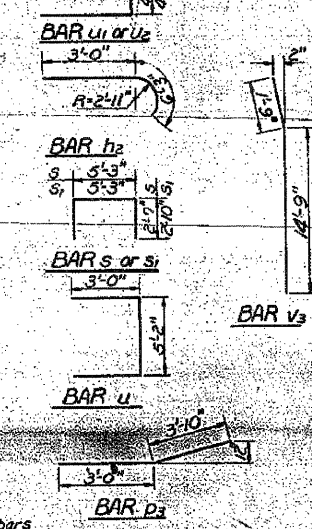
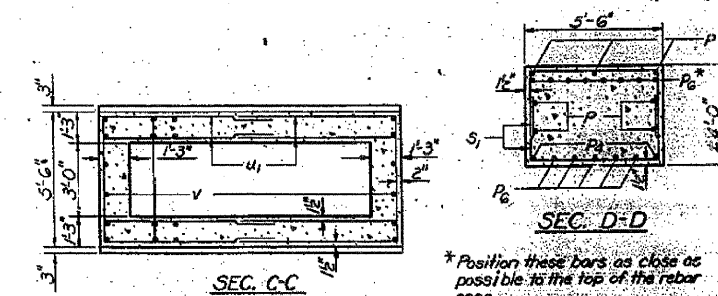
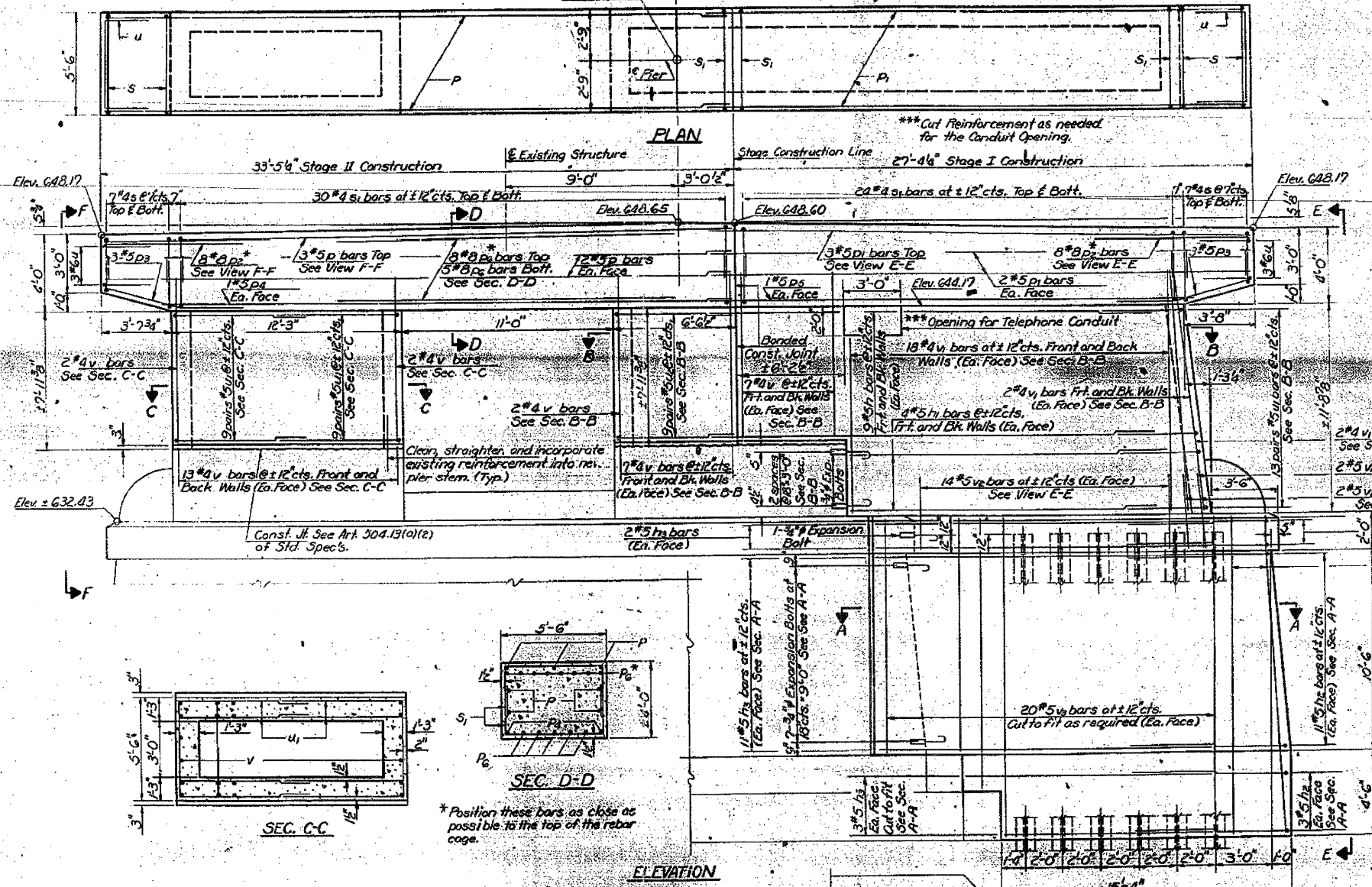
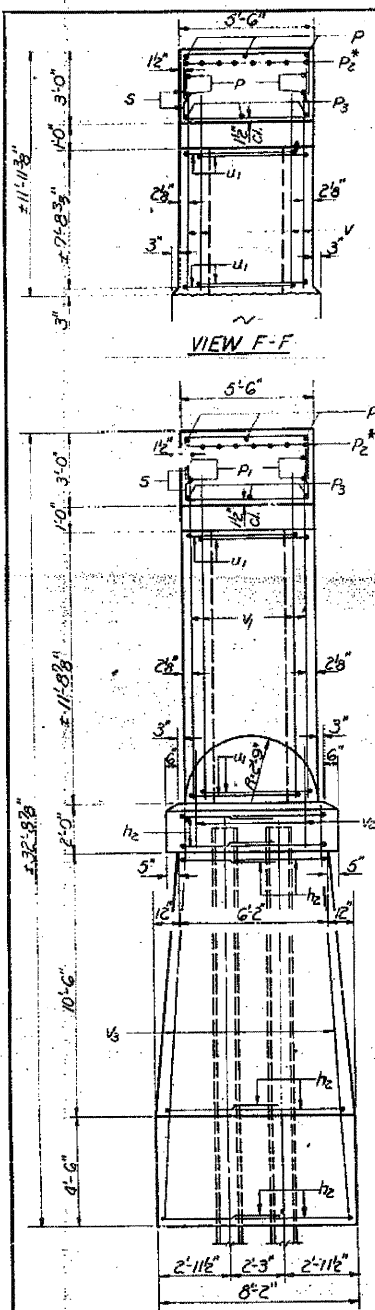
FOR INFORMATION ONLY

STATE OF ILLINOIS
DEPARTMENT OF TRANSPORTATION

Sta. 10+66.00

| | | | | |
|-------------|----------|-----------|-----------|--------------|
| PROJECT NO. | DISTRICT | COUNTY | SHEET NO. | TOTAL SHEETS |
| 646 | 1BR-1 | Whiteside | 64 | 37 |

FHEET NO. 16
26 SHEETS



BILL OF MATERIAL

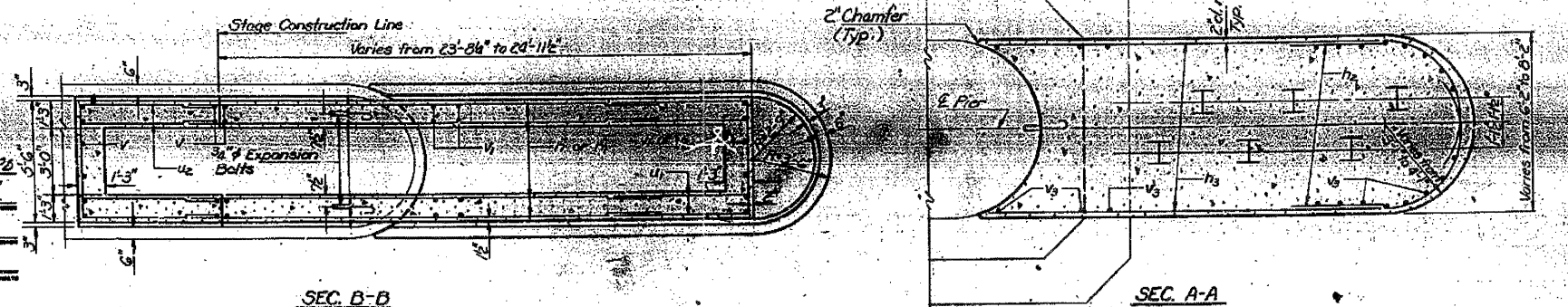
| Bar | No | Size | Length | Shape |
|--------------------|-----|------|---------|-------|
| h1 | 36 | #5 | 21'-4" | |
| h2 | 16 | #5 | 14'-0" | |
| h3 | 32 | #5 | 9'-3" | |
| h3 | 32 | #5 | 18'-9" | |
| D | 7 | #5 | 33'-3" | |
| D1 | 7 | #5 | 28'-8" | |
| D2 | 16 | #8 | 7'-4" | |
| D3 | 6 | #5 | 6'-10" | |
| D4 | 2 | #5 | 29'-8" | |
| D5 | 2 | #5 | 25'-1" | |
| D6 | 13 | #8 | 18'-6" | |
| s | 28 | #8 | 10'-5" | |
| s1 | 108 | #4 | 20'-11" | |
| u | 6 | #6 | 11'-2" | |
| u1 | 62 | #5 | 12'-11" | |
| u2 | 18 | #5 | 16'-11" | |
| v | 114 | #8 | 9'-0" | |
| v1 | 82 | #8 | 13'-0" | |
| v2 | 34 | #5 | 23'-6" | |
| v3 | 52 | #5 | 16'-6" | |
| Reinforcement Bars | | | 18520 | |
| Class. Concrete | | | 21000 | |
| Formwork | | | 1400 | |
| Sheet Piles | | | 1000 | |
| Cofferdam | | | 1 | |

PILE DATA
Type: Steel HP 12x74
Capacity: Drive to Refusal
Est. Length: 17'
No. Req'd: 6

DESIGNED DAW KRULL
CHECKED M.J. Ryan
DRAWN Joe Sutherland
CHECKED MJR

EXAMINED *Carl Hummer*
PASSED
APPROVED

Feb 25 1980



PIER 2
E.A. FT. 646 SEC. 1BR-1
WHITESIDE COUNTY
STATION 10+12.00