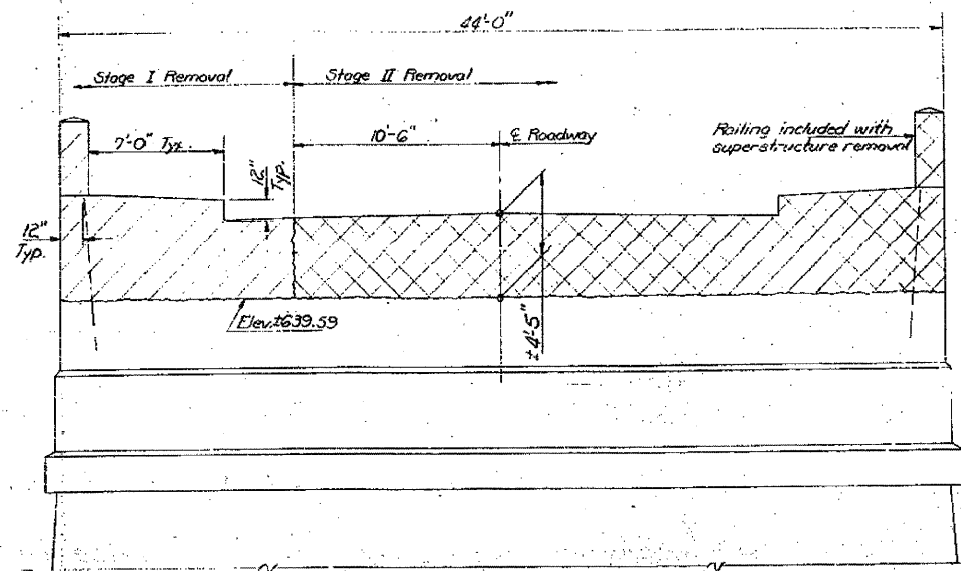


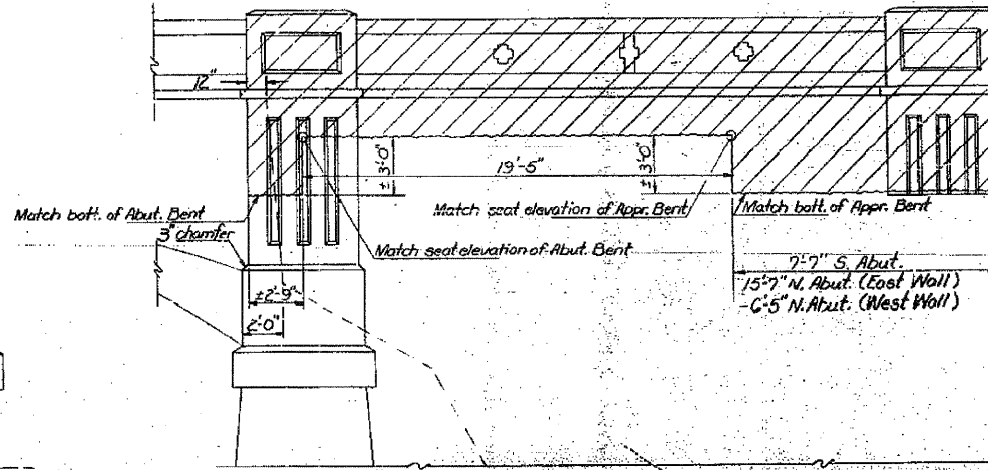
FOR INFORMATION ONLY

STATE OF ILLINOIS  
DEPARTMENT OF TRANSPORTATION

ROUTE NO.	SECTION	CONTRACT	TOTAL SHEETS	SHEET NO.	SHEET NO. 12
64	1BR-1	Whiteside	64	33	26 SHEETS
FED. ROAD DIST. NO. 7 ILLINOIS FED. AID PROJECT					



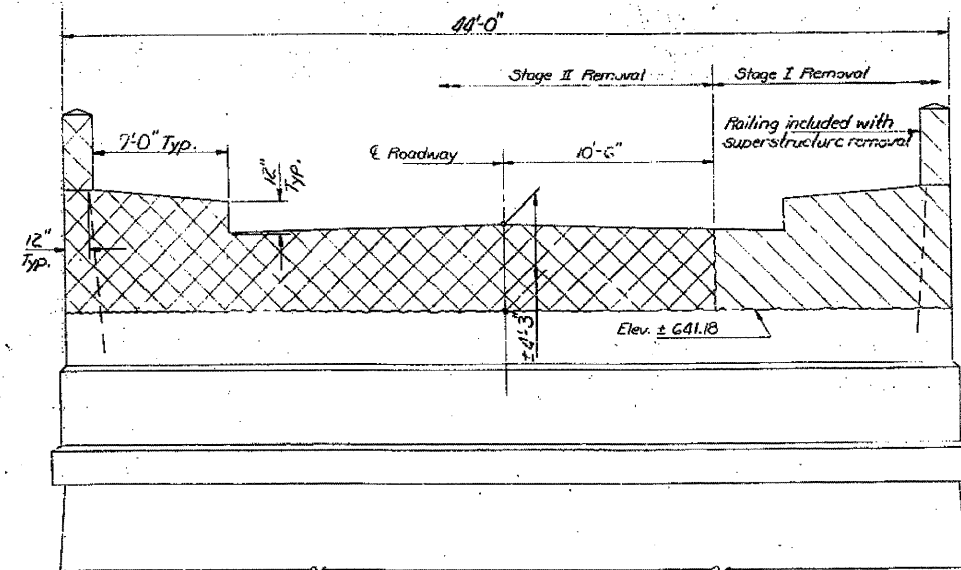
ELEVATION EXISTING NORTH ABUTMENT  
Looking North



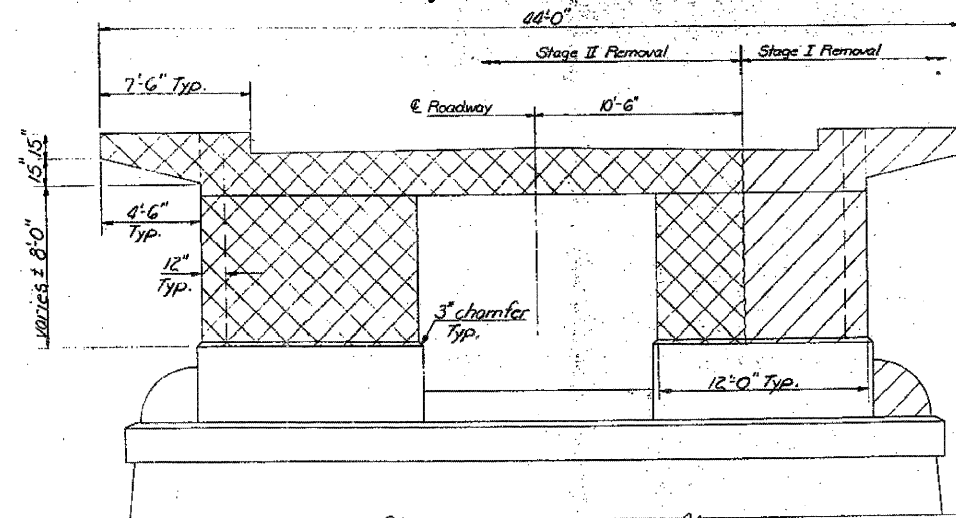
ELEVATION OF EXISTING ABUTMENT WALLS  
Stage Removal is typical for both Abutments and also for both Stage I and II Removal.

REPAIR OF CONCRETE STRUCTURES

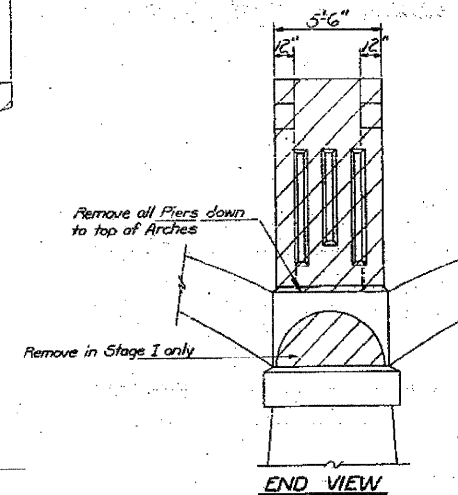
Type Repair	Location	Quantity
Arch Spall	Span 3	100 Sq. Ft.
	4	140 Sq. Ft.
	5	10 Sq. Ft.
	7	40 Sq. Ft.
	8	65 Sq. Ft.
	9	85 Sq. Ft.
	10	80 Sq. Ft.
	11	120 Sq. Ft.
	12	80 Sq. Ft.
Fier Spall	Fier 3	10 Sq. Ft.
	4	10 Sq. Ft.
	5	25 Sq. Ft.



ELEVATION EXISTING SOUTH ABUTMENT  
Looking South



ELEVATION EXISTING PIERS  
Looking South



END VIEW

BILL OF MATERIAL

Item	Unit	Total
Concrete Removal	Cu. Yd.	310

DESIGNED DAU KRULL  
 CHECKED M. J. Ryan  
 DRAWN Joe Sutherland  
 CHECKED MJR

EXAMINED Carl E. ...  
 PASSED  
 APPROVED

Feb. 29 1980

STAGE REMOVAL  
F.A. RT. 64G SEC. 1BR-1  
WHITESIDE COUNTY  
STATION 14+12.40