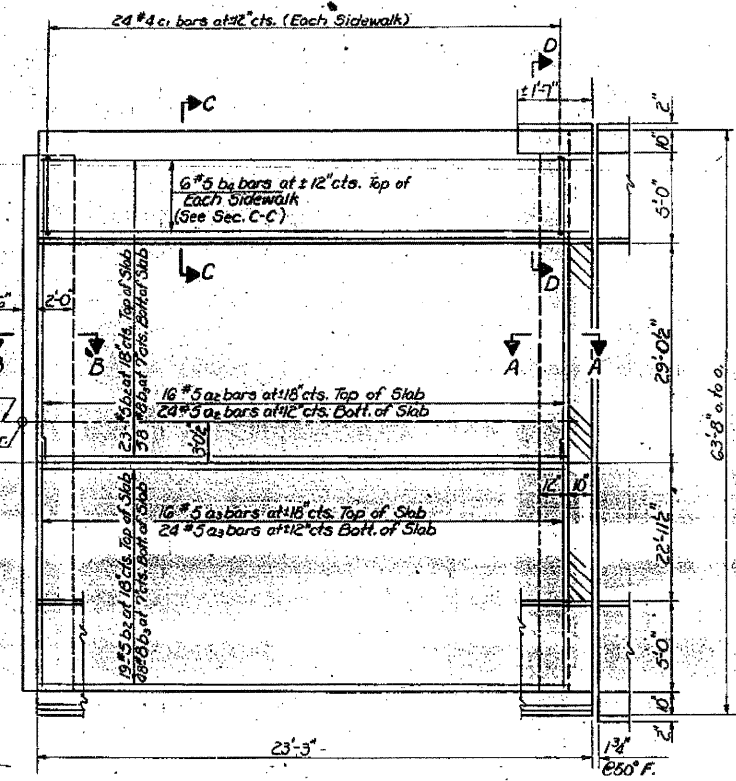
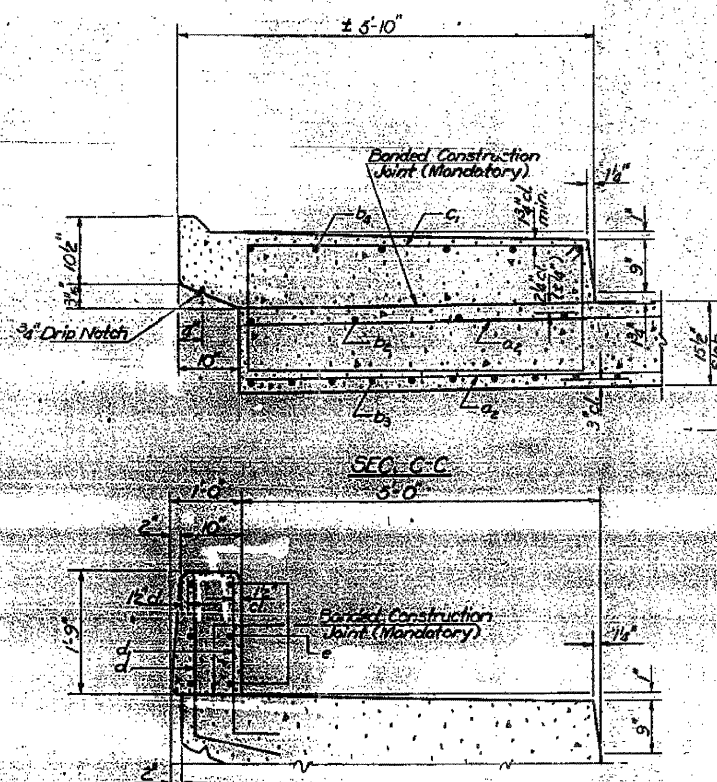


STATE OF ILLINOIS  
DEPARTMENT OF TRANSPORTATION

PROJECT NO.	18R-1	WHITESIDE	64	31
SHEET NO. 10				
26 SHEETS				

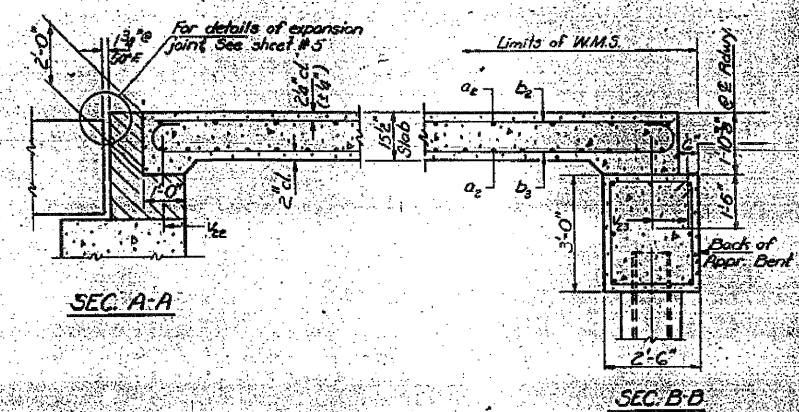


PLAN



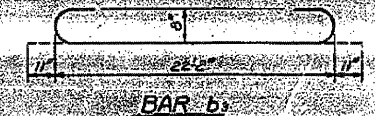
SECTION C-C

SECTION D-D

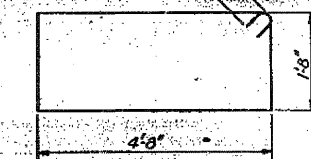


SECTION A-A

SECTION B-B



BAR b2



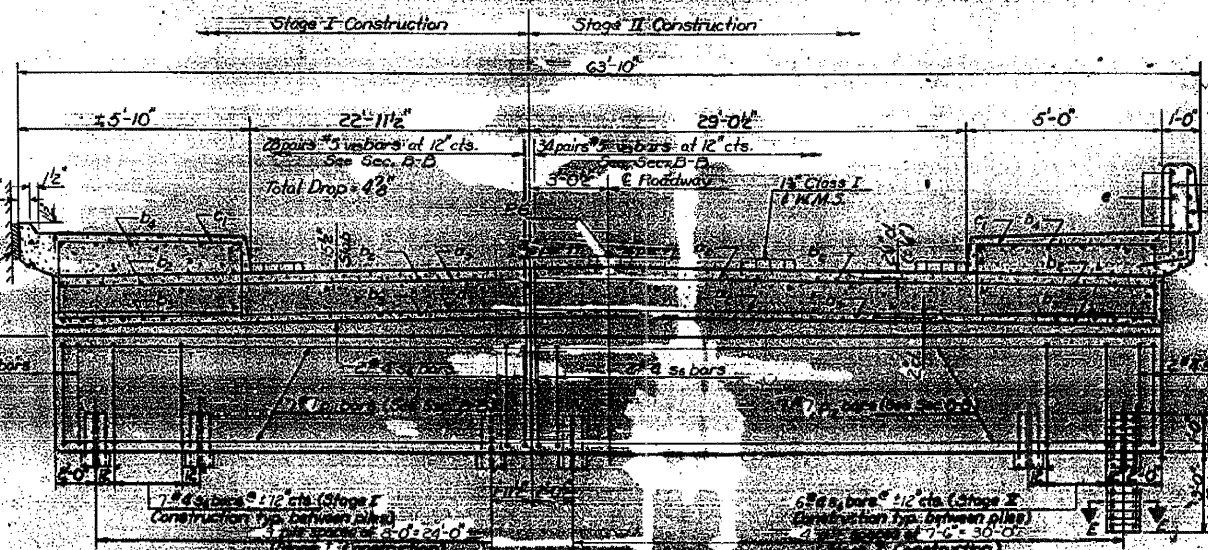
BAR c1

BILL OF MATERIAL

Bar No.	Qty	Size	Length	Shape
a2	40	#5	33'-9"	
a3	40	#5	29'-4"	
b2	48	#5	22'-0"	
b3	106	#8	24'-0"	
b4	12	#5	23'-0"	
c1	48	#4	13'-5"	
d1	7	#7	29'-6"	
d2	7	#7	33'-9"	
s6	53	#4	10'-9"	
v2	121	#5	2'-6"	
Class E Concrete (C&G)				
Reinforcement Bars (Prod 12-11-0)				
Steel Plates (HP10x42)				
Cast in Place Concrete				

PILE DATA

Type: Steel HP10x42  
Capacity: Drive to Refusal  
Est. Length: 20'  
No. Required: 8 plus one test pile in a permanent location.



CROSS SECTION OF SLAB AND BENT FOR APPROACH BENT

DESIGNED BY: DAN KEEL	DATE: 10/25/60
CHECKED: M.S.B.	APPROVED: [Signature]
DRAWN: Joe Sutherland	
CHECKED: M.R.	

NORTH APPROACH  
RAILROAD BRIDGE  
WHITESIDE COUNTY  
STATION 14K+40