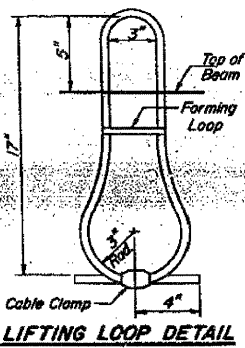
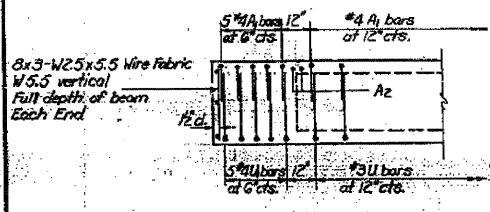
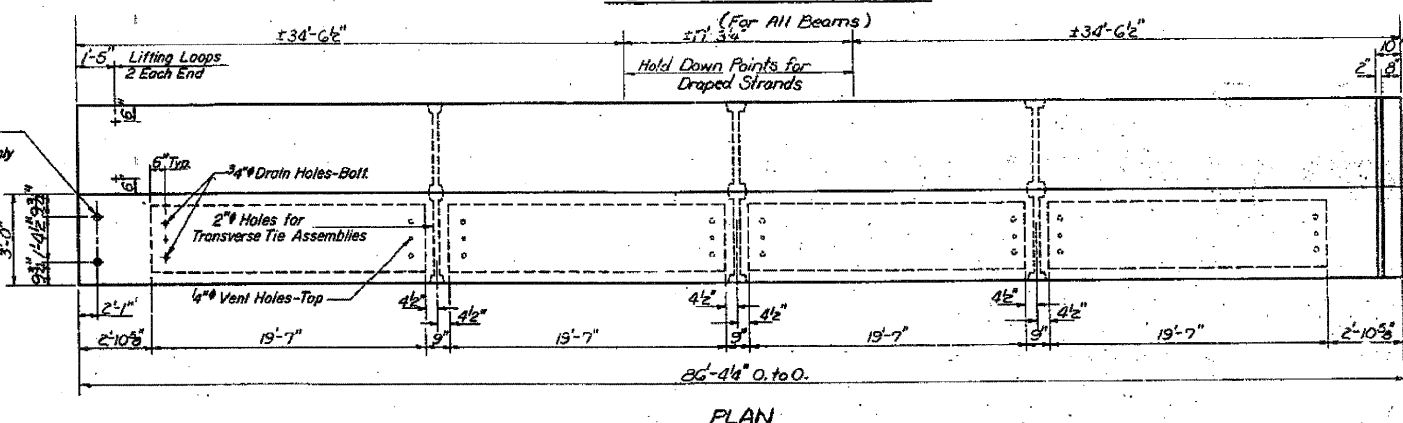
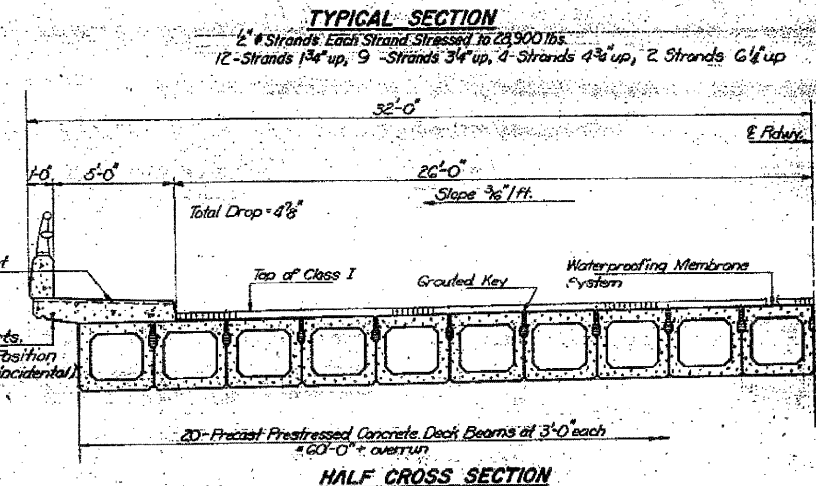
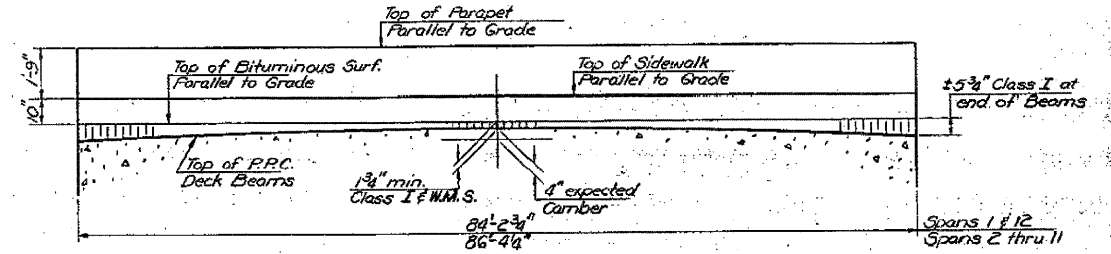
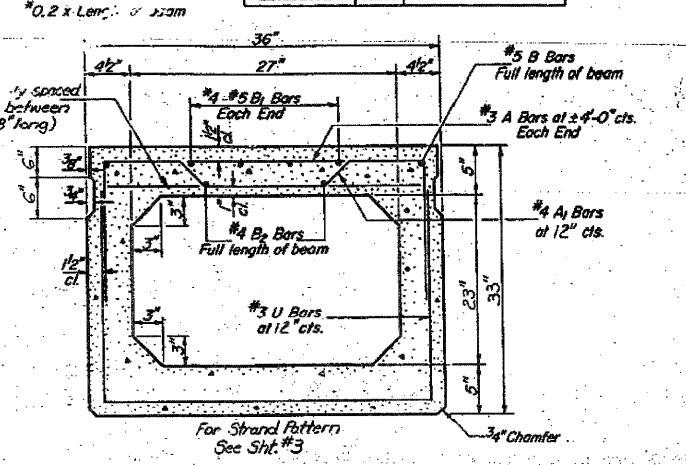
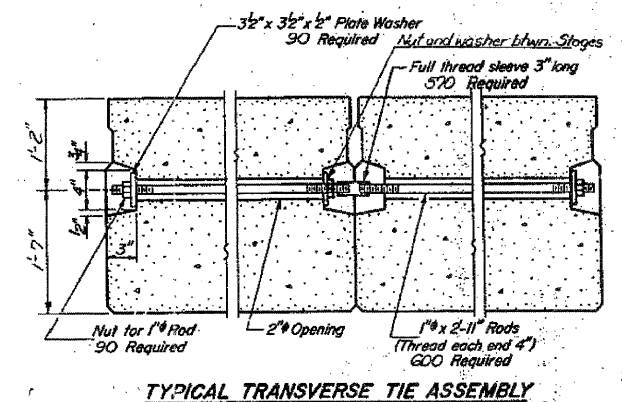
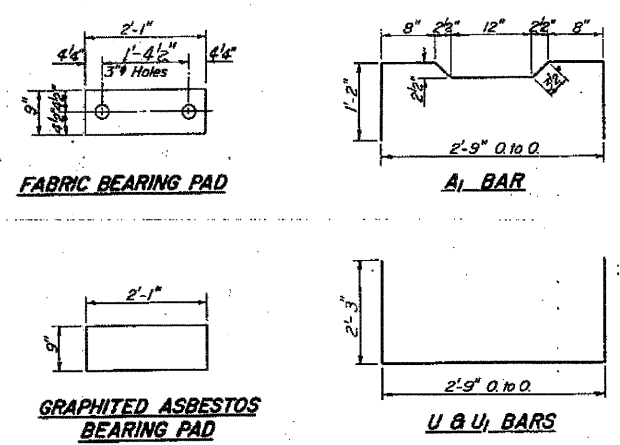


STATE OF ILLINOIS
DEPARTMENT OF TRANSPORTATION

PROJECT NO.	SECTION	COUNTY	POST MILES	SHEET NO.	TOTAL SHEETS
646	1BR-1	Whiteside	6.4	25	26
SHEET NO. 4		26 SHEETS			



NOTES

Prestressing steel shall be non-synthesized high strength, stress-relieved 7-wire strand, Grade 270. The nominal diameter shall be 1.2" and the nominal cross-sectional area shall be 0.153 sq. in. Lifting loops shall be 7/8" diameter, 6 x 25 class wire rope with fiber core and shall have a minimum ultimate tensile strength of 23,000 lbs.

The 1" rods in the transverse tie assembly shall be tightened to a snug fit and the threads set. Pockets that receive transverse tie bar on outside shall be filled with grout after transverse tie assembly is in place.

Longitudinal shear keys shall be packed with a very dry mix of 2-1 sand and P.C. mortar. After beams have been erected, holes for the dowel anchors shall be drilled into the sub-structure and the anchor dowels shall be grouted in place.

Reinforcement bars shall conform to AASHTO M-31 or AASHTO M-53, Grade 60.

Cost of reinforcement and accessories cast into the beam, of bearing pads, of armor angles, and of grouting longitudinal shear keys is included in unit price bid for "Precast Prestressed Concrete Deck Beams."

BILL OF MATERIAL

Bar	No.	Size	Length	Shape
Precast Prestressed Concrete Deck Beams	56	12"	51.82'	

DESIGNED DAN KRULL
CHECKED M.L. RYAN
DRAWN Joe Sutherland
CHECKED M.J.R.

EXAMINED [Signature]
PASSED [Signature]
APPROVED [Signature]
DIRECTOR OF HIGHWAYS

SPANS 2 THRU 11
SUPERSTRUCTURE
PARTIAL SECTION 1BR-1
WHITESIDE COUNTY
WHITEHOLE ROAD