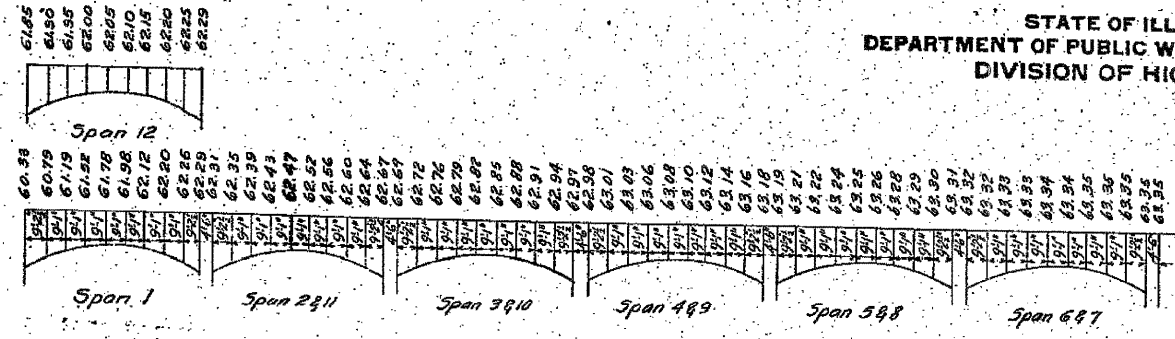
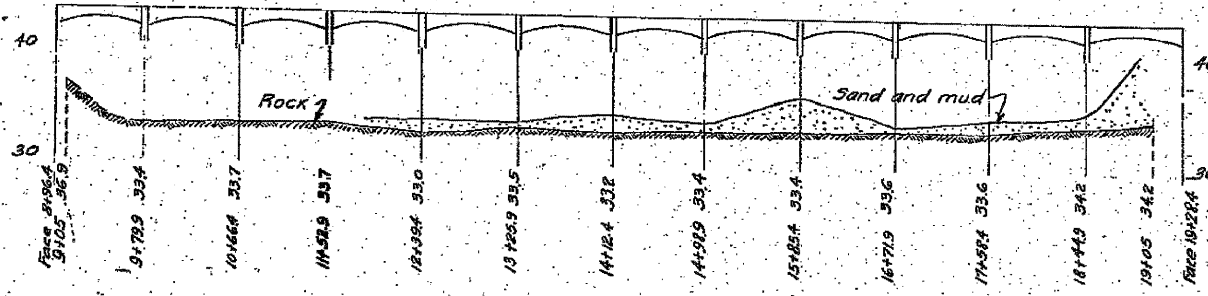


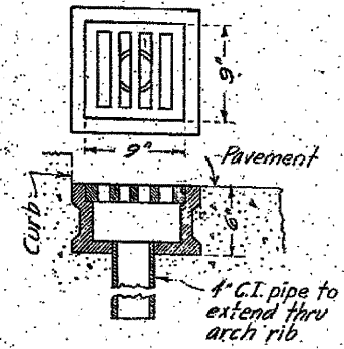
FOR INFORMATION ONLY



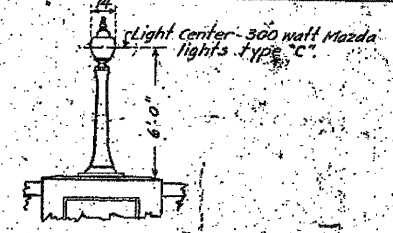
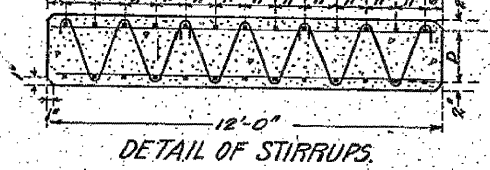
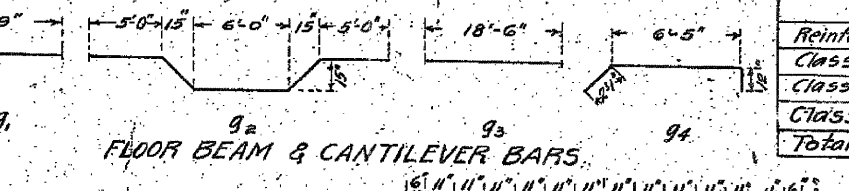
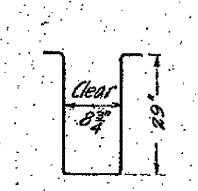
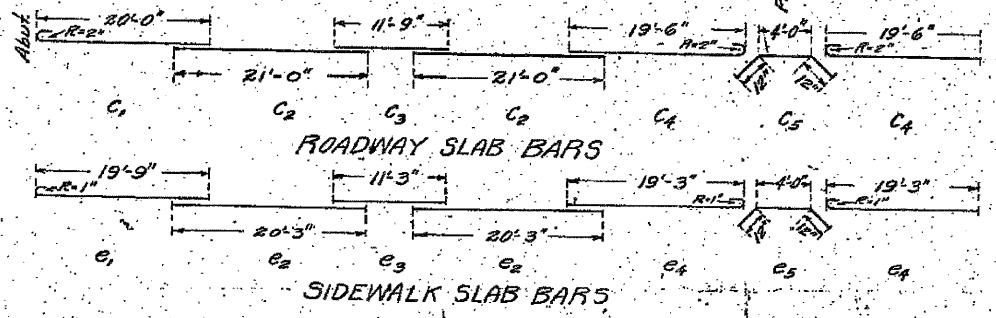
CAMBER SKETCH
Showing Crown Elevations



PROFILE OF STREAM BED
Showing Rock Elevations
Scale: Hor. 1"=80' Vert. 1"=8'



C.T. CATCH BASIN
One at each curb
Spans 2, 5, 8, 11.
8'-Reqd.

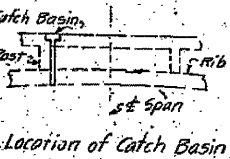


SKETCH OF LAMP POST
26'-Reqd.

BILL OF MATERIAL

Bar	No.	Size	Length	Bar	No.	Size	Length
V1	10	1/2"	18'-0"	H20	640	1/2"	10'-9"
V2	32	1/2"	14'-6"	H21	88	1/2"	5'-3"
V3	16	1/2"	13'-6"	V10	572	1/2"	8'-3"
V4	19	1/2"	15'-0"	V11	572	1/2"	5'-3"
V5	97	3/8"	9'-6"	V12	528	1/2"	7'-6"
V6	16	3/8"	7'-0"	V13	528	1/2"	5'-0"
V7	24	3/8"	9'-6"	P1	1034	1/2"	9'-0"
V8	20	3/8"	7'-0"	P2	1034	1/2"	6'-6"
V9	55	1/2"	12'-6"	t2	803	3/4"	15'-9"
V10	88	1/2"	11'-3"	t3	308	3/4"	9'-0"
H1	18	1/2"	19'-9"	d1	88	1/2"	5'-3"
H2	8	1/2"	15'-0"	H18	384	1/2"	17'-9"
H3	4	1/2"	24'-6"	H19	96	1/2"	9'-0"
H4	3	1/2"	20'-6"	C1	154	5/8"	26'-6"
H5	3	1/2"	18'-6"	C2	1848	3/8"	21'-0"
H6	8	1/2"	14'-3"	C3	924	5/8"	11'-9"
H7	4	1/2"	5'-9"	C4	1694	3/8"	28'-0"
H8	9	1/2"	15'-6"	C5	847	3/8"	28'-0"
H9	4	1/2"	6'-0"	e1	72	1/2"	28'-0"
H10	40	1/2"	25'-0"	e2	864	1/2"	28'-0"
H11	38	1/2"	18'-6"	e3	432	1/2"	11'-3"
H12	44	1/2"	15'-9"	e4	792	1/2"	15'-0"
H13	8	1/2"	20'-6"	e5	396	1/2"	6'-0"
H14	8	1/2"	16'-0"	a1	624	3/4"	14'-3"
H15	6	1/2"	19'-0"	a2	624	3/4"	11'-0"
H16	6	1/2"	10'-6"	a3	288	3/4"	19'-6"
H17	8	1/2"	18'-6"	a4	318	3/4"	16'-6"
				g1	308	3/4"	6'-9"
K1	4	1/2"	11'-0"	g2	236	3/4"	19'-6"
K2	4	1/2"	18'-0"	g3	354	3/4"	18'-6"
K3	6	1/2"	13'-0"	g4	708	3/4"	9'-6"
K4	8	1/2"	15'-0"	S	2950	3/8"	8'-6"
				f1	1004	1/2"	8'-0"
R1	73	3/8"	10'-0"	f2	1028	1/2"	9'-3"
R2	40	3/8"	8'-6"	f3	2032	1/2"	15'-6"
R3	12	3/8"	5'-6"	f4	144	3/8"	7'-5"
R4	20	1/2"	5'-6"	K2	144	3/8"	7'-5"
Z1	38	3/4"	11'-0"	Z	44	3/8"	7'-5"
L1	75	3/4"	11'-0"	Z	44	3/8"	7'-5"
Z2	52	3/4"	5'-6"	Y5	144	3/8"	8'-0"
				Y6	144	3/8"	12'-0"
Reinforcing Steel Lbs. 482520				Brick Rail Cu.Yds. 99.6			
Class A Concrete Cu.Yds. 4190				1 1/2" Fiber Conduit Lin.Ft. 1630			
Class B Concrete Cu.Yds. 3278				Catch Basins 8			
Class X Concrete Cu.Yds. 179				Concrete Lamp Posts 26			
Total Concrete Cu.Yds. 7645				Pull Boxes - 25' 1/2" Switch Box 1			
				No. 6 Twin Lead Covered Conductor Lin.Ft. 1830			

APPROVED
SPEC
CHECKED
DESIGNED
DATE
BY
BRIDGE ENGINEER
APPROVED
DATE
BY
ENGINEER OF DESIGN
APPROVED
DATE
BY
CHIEF HIGHWAY ENGINEER



OK as revised
Jan. 16, 1923
T. Burch

PLAN NO.
38.18.28-2
11/15/18
1922