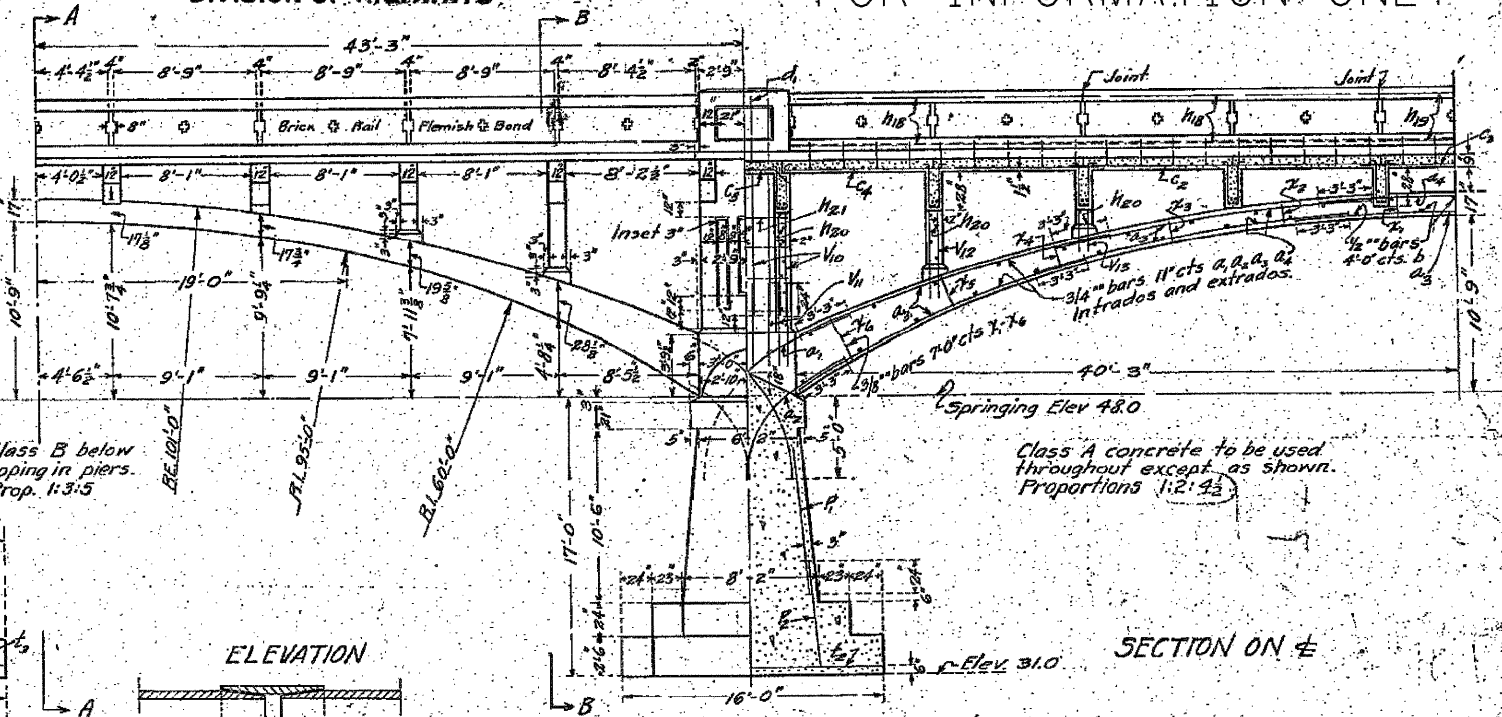
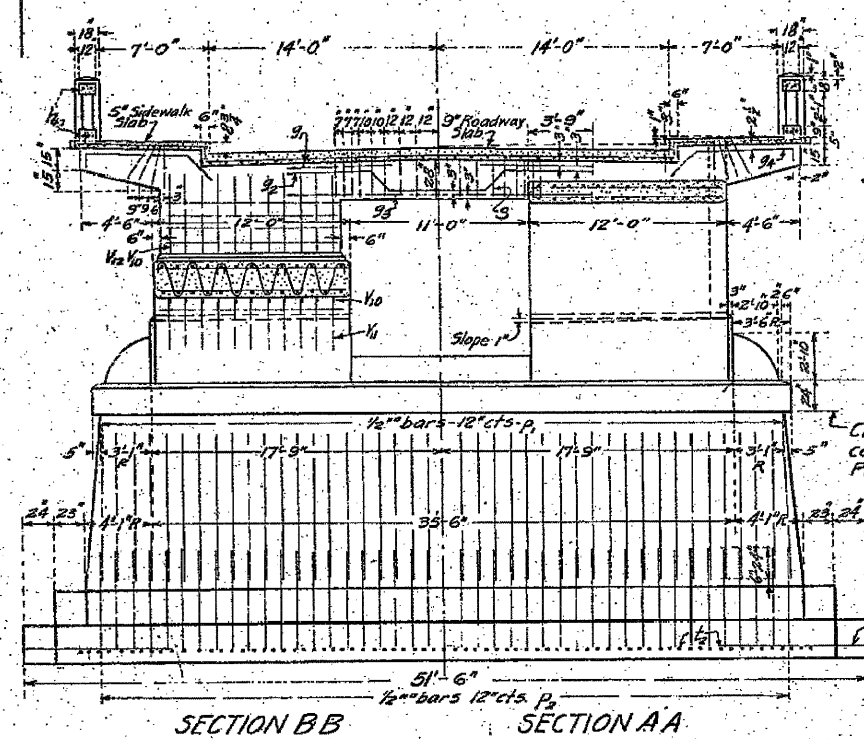


Note: All utilities using this bridge to be suspended by hangers from bottom of floor beams between arch ribs. West side of space to be reserved for Illinois Bell Telephone Co. Other utilities to be located in east half of space.

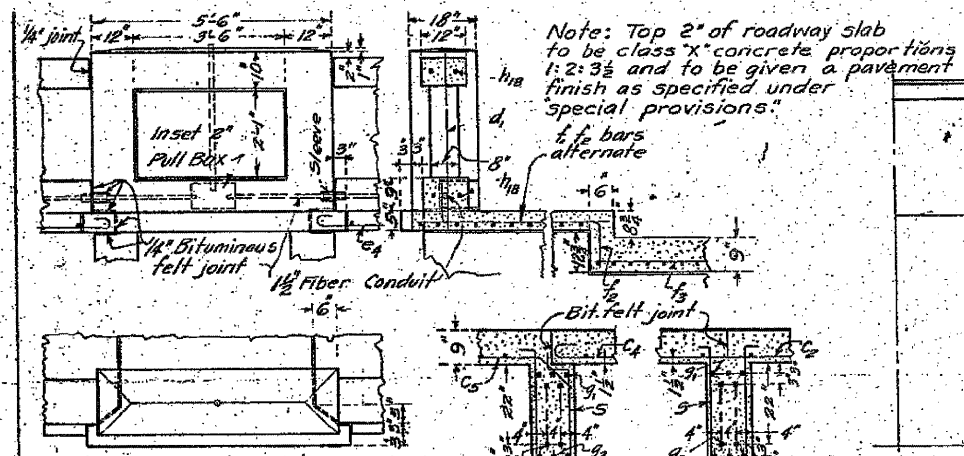
STATE OF ILLINOIS
DEPARTMENT OF PUBLIC WORKS & BUILDINGS
DIVISION OF HIGHWAYS

FOR INFORMATION ONLY



ELEVATION

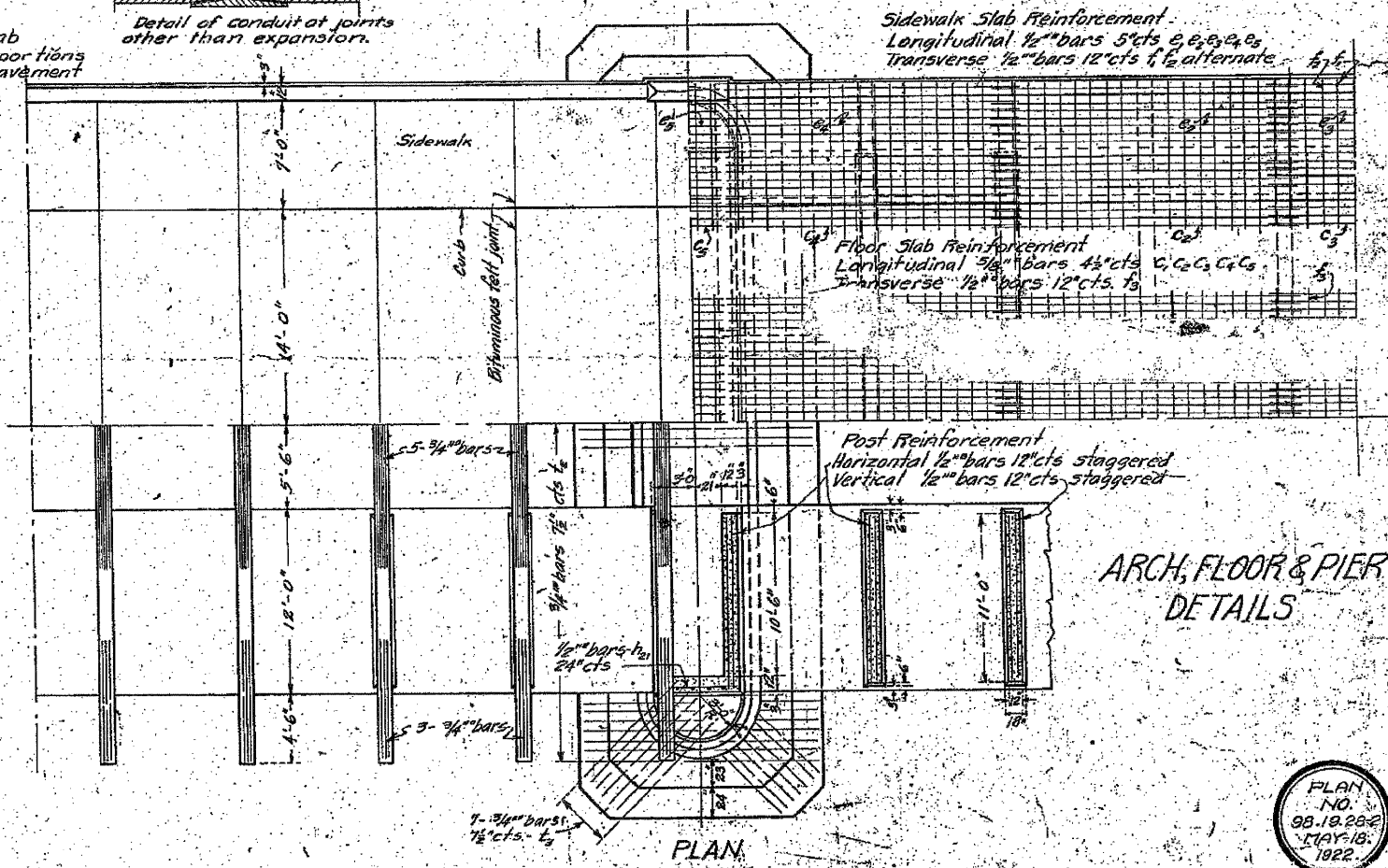
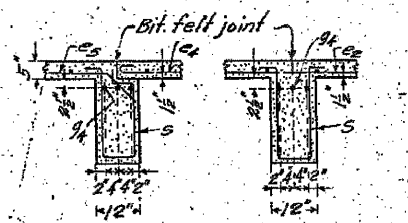
Detail of conduit at joints other than expansion.



COMPUTED	W.N.Schroeder
CHECKER	R.B. Munch
DRAWN	W.N.S.
CHECKED	R.B.M.
SPECIAL	
ASSEMBLED	
CHECKED	

EXAMINED
PASSED
APPROVED

O.K. as revised
Jan. 16, 1923
A.F. Binch



PLAN NO.
98.19.23-2
MAY 18, 1922