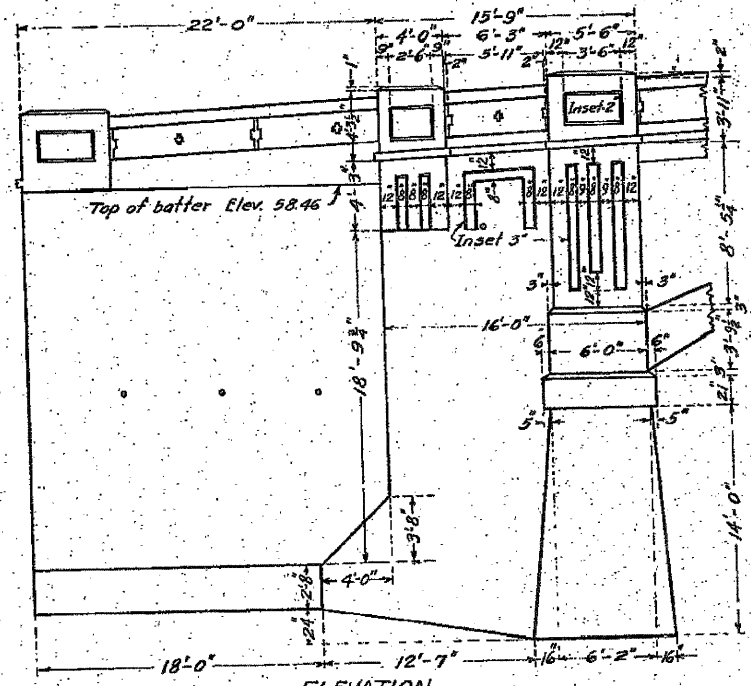
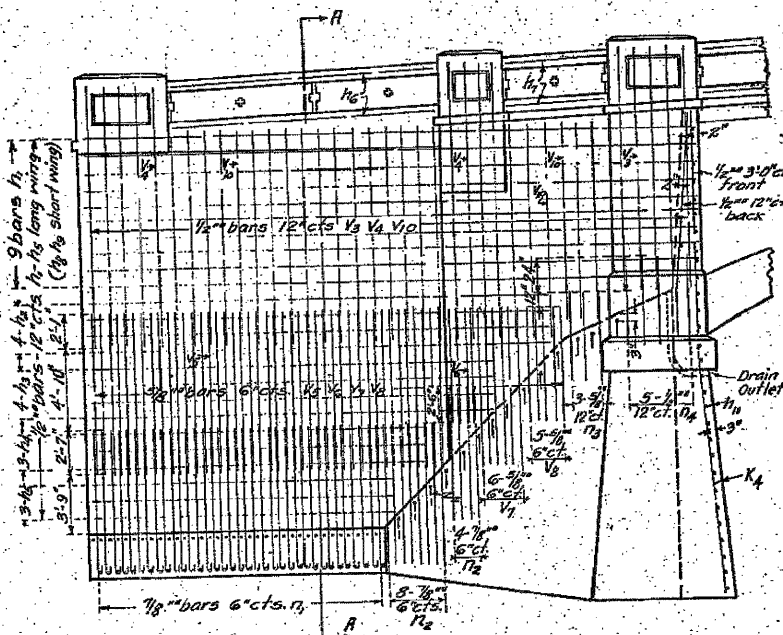


STATE OF ILLINOIS
DEPARTMENT OF PUBLIC WORKS & BUILDINGS
VISION OF HIGHWAYS

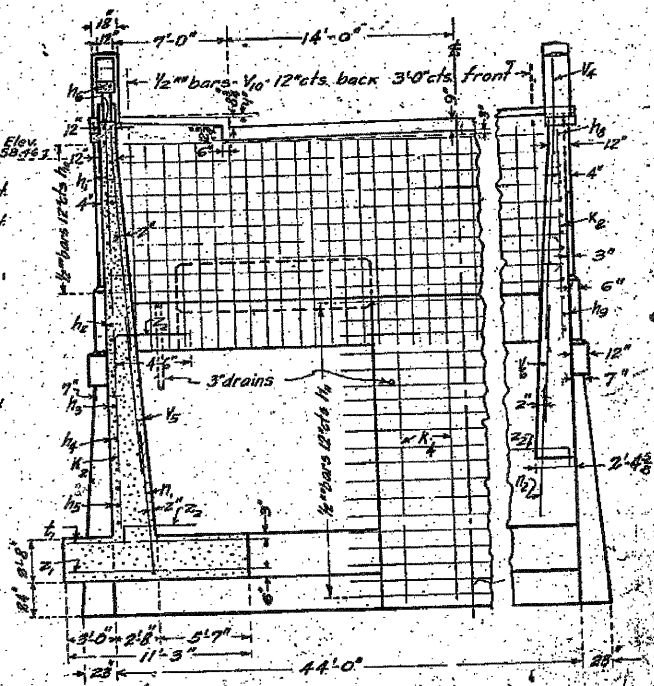
FOR INFORMATION ONLY



ELEVATION
Showing Outlines

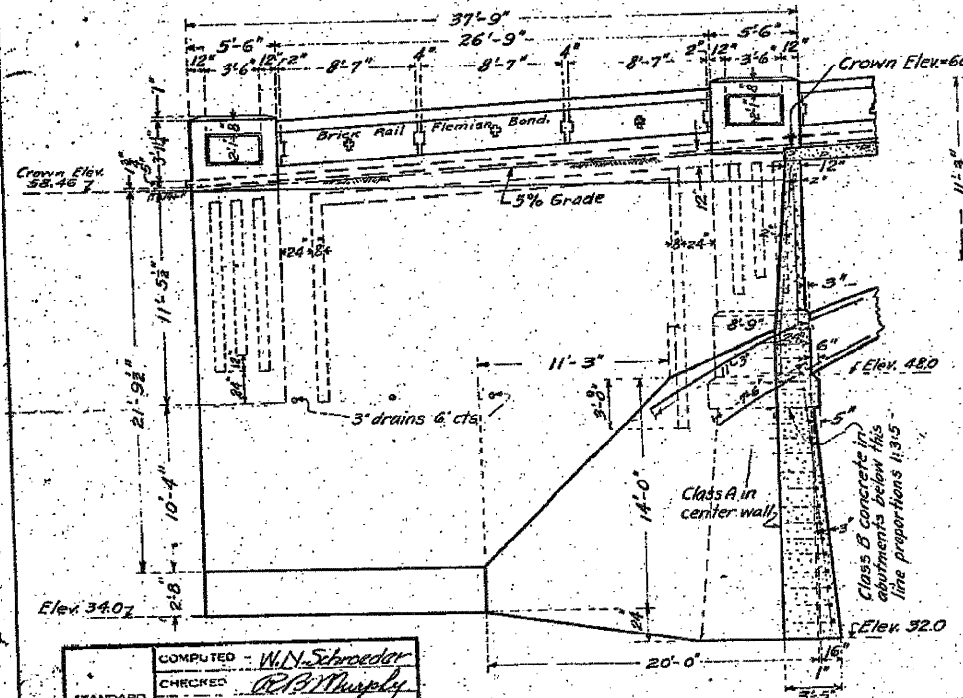


ELEVATION
Showing Reinforcement

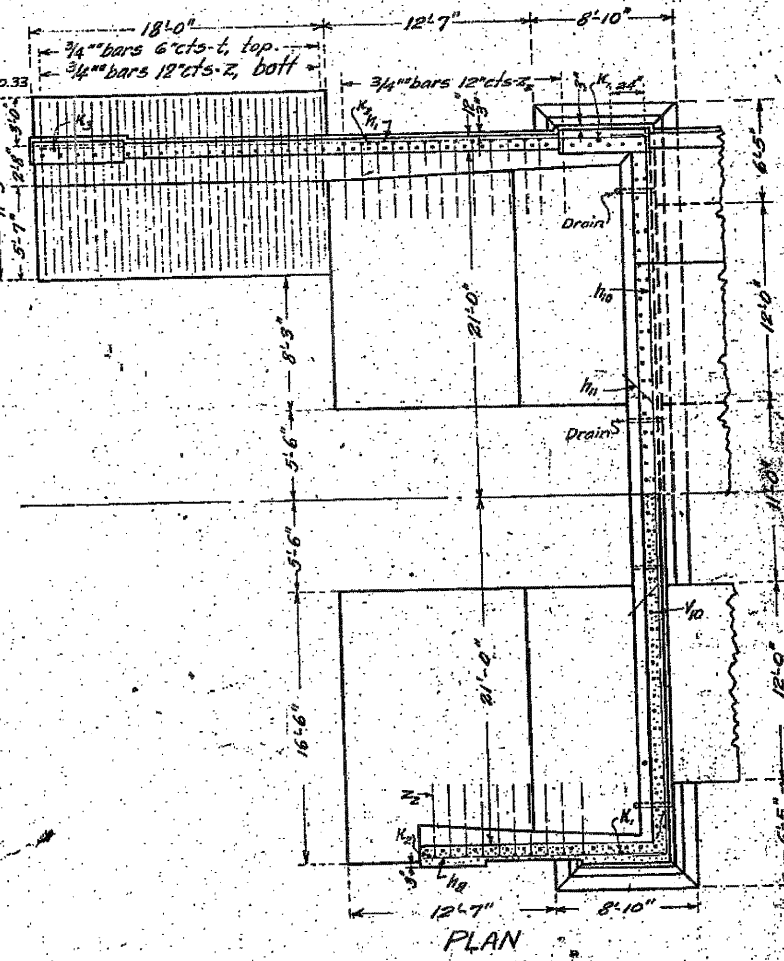


SECTION AA

All footings to extend into rock.



SECTION ON 4



PLAN

Class A concrete to be used throughout
(proportions 1:2:4) except in abutments
below coping as shown.

NORTH ABUTMENT
DETAILS

COMPUTED	W. N. Schroeder
CHECKED	R. B. Murphy
GRAPH	W. N. S.
CHECKED	R. B. M.
SPECIAL	
ASSEMBL.	
CHECKED	

EXAMINED
J. J. Burch
BRIDGE ENGINEER

PASSED
W. H. ...
ENGINEER OF DESIGN

APPROVED
E. Alder
CHIEF HIGHWAY ENGINEER

O.K. as revised
Jan. 16, 1923
J. J. Burch

PLAN
NO.
25 (28)
MAY 18,
1922