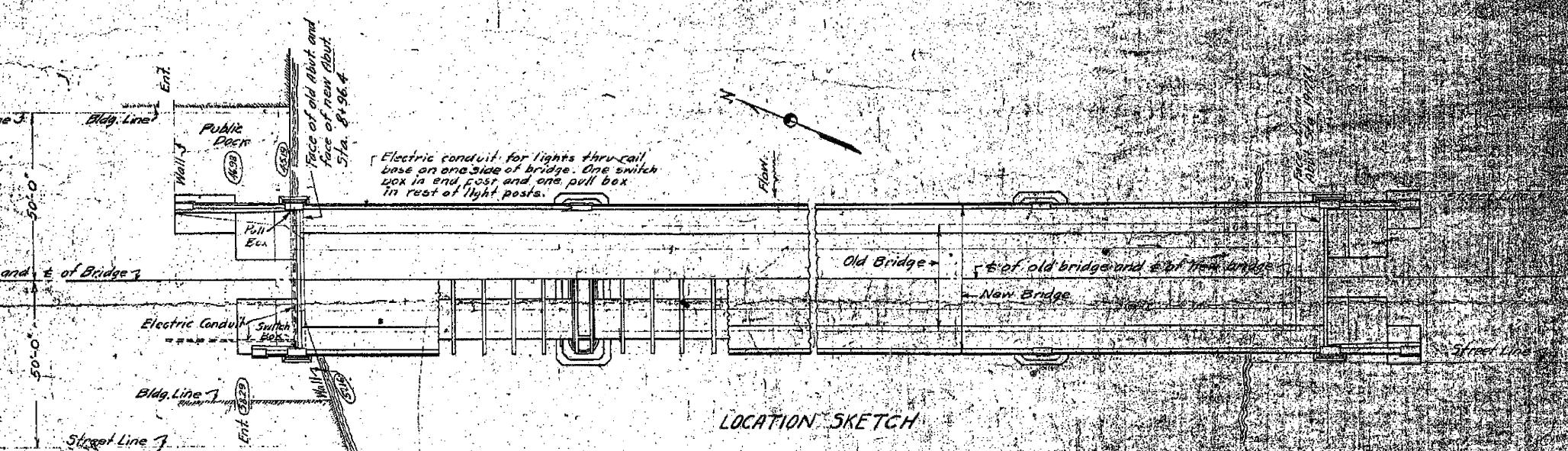
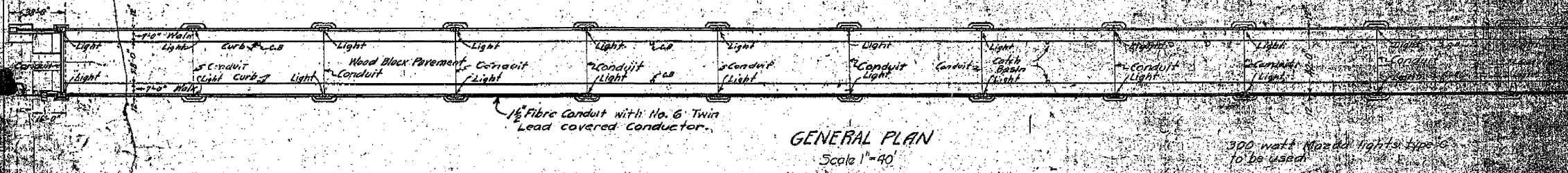
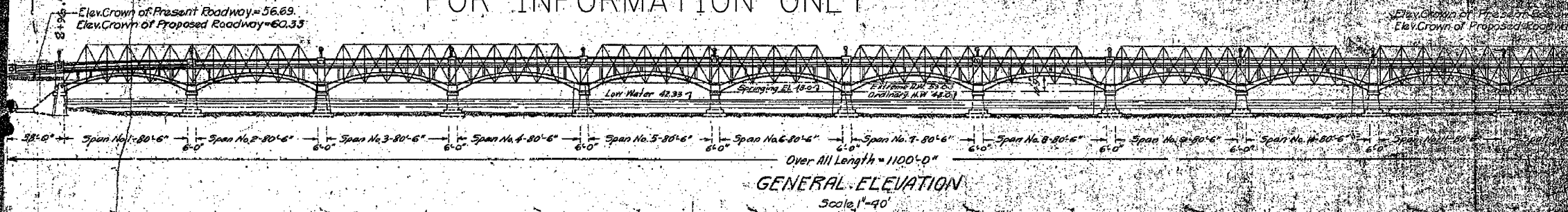


B.M. #22 - 2 1/2' from N.E. corner of top of masonry at E end of Abutment of wagon bridge between Sterling and Rock Falls - Elev. 56.37

STATE OF ILLINOIS  
DEPARTMENT OF PUBLIC WORKS & BUILDINGS  
DIVISION OF HIGHWAYS

ER 24

FOR INFORMATION ONLY



COMPUTED	W. D. Schroeder
CHECKER	R. B. Murphy
DRAWN	W. N. S.
CHECKED	C. B. M.
SPECIAL	ASSEMBLED
	CHECKED

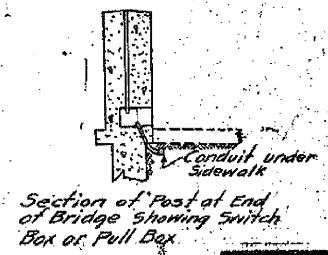
EXAMINED JAN 5 1923

H. F. Burchell  
BRIDGE ENGINEER

APPROVED  
ENGINEER OF DESIGN

C. Elder  
CHIEF HIGHWAY ENGINEER

O.K. as revised  
Jan 16, 1923  
H. F. Burchell



FIRST AVENUE BRIDGE IN STERLING

PLANS FOR  
FIRST AVENUE BRIDGE  
STERLING, TOWNSHIP  
WHITESIDE COUNTY  
ILLINOIS

SHEET NO.	TOTAL SHEETS	SHEET NO.
1 OF 5	257	207
CONTRACT NO. 64880 FOR INFORMATION ONLY		