

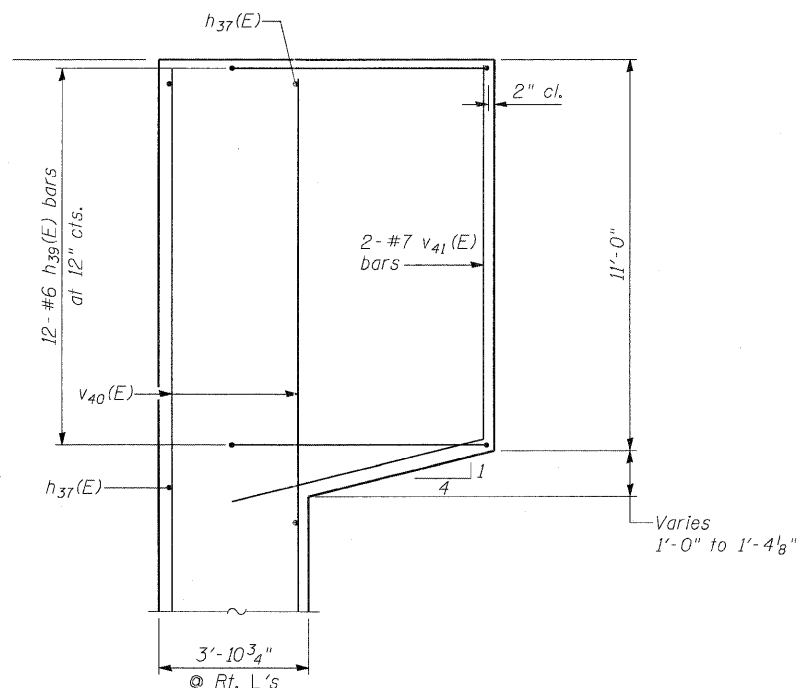
**Notes:**

Hatched area to be poured after superstructure false work has been removed and expansion assemblies have been adjusted. Quantity of concrete included with Concrete Superstructure.

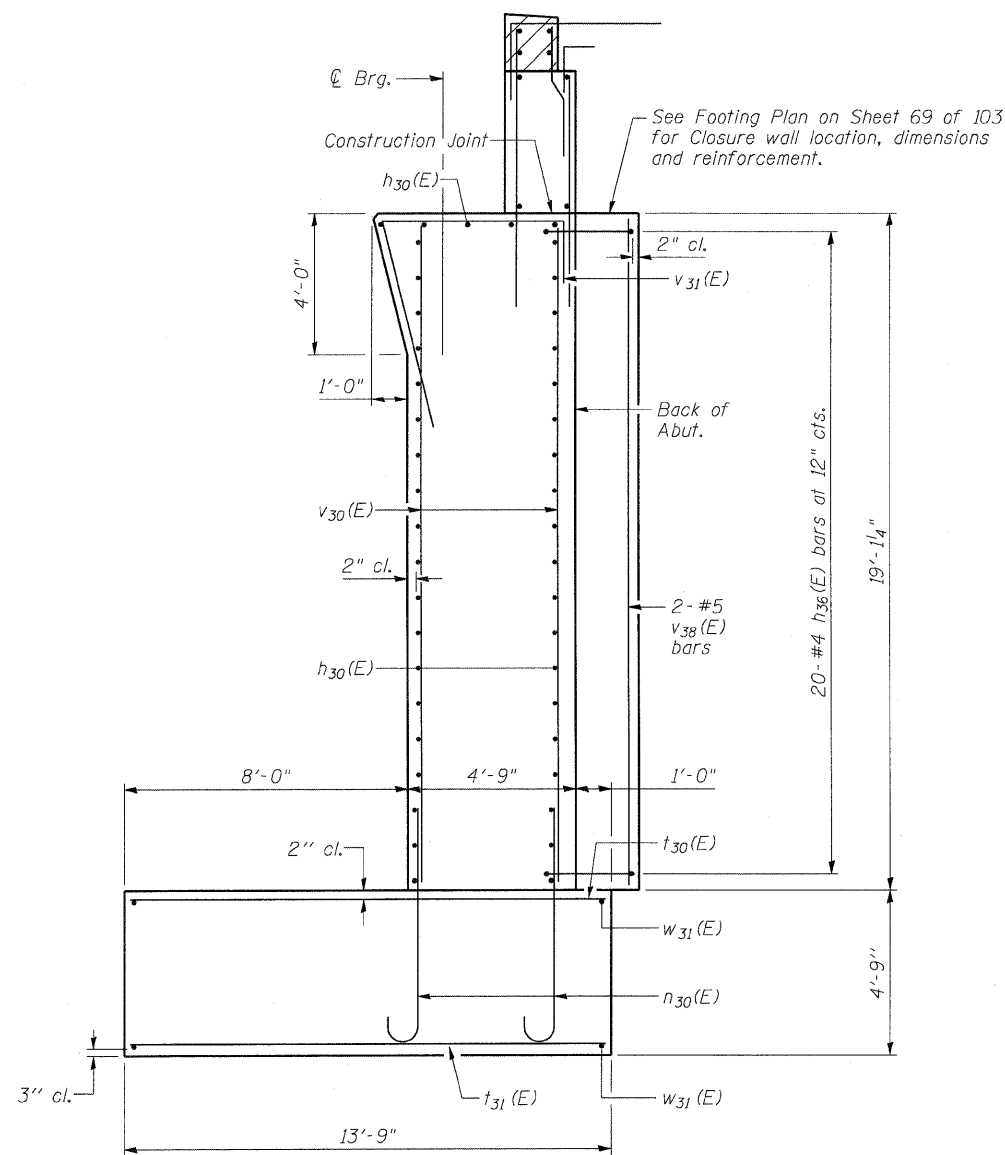
Space reinforcement in abutment wall to miss anchor bolts.

Pour steps monolithically with abutment wall.

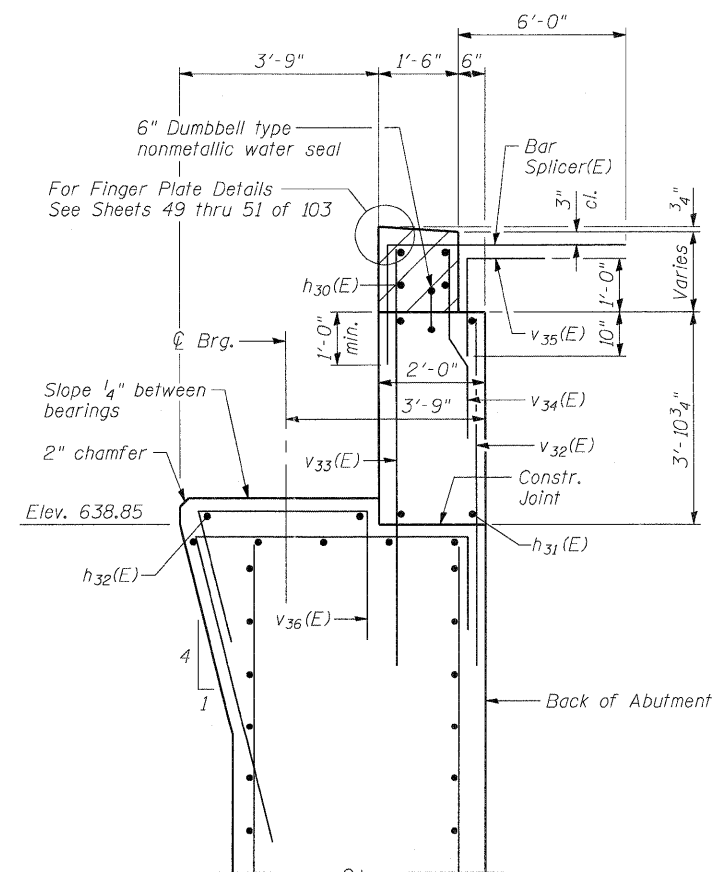
Front Face of backwall (including hatched block), abutment seat and top 4'-0" of front face of abutment wall shall be treated with concrete sealer.



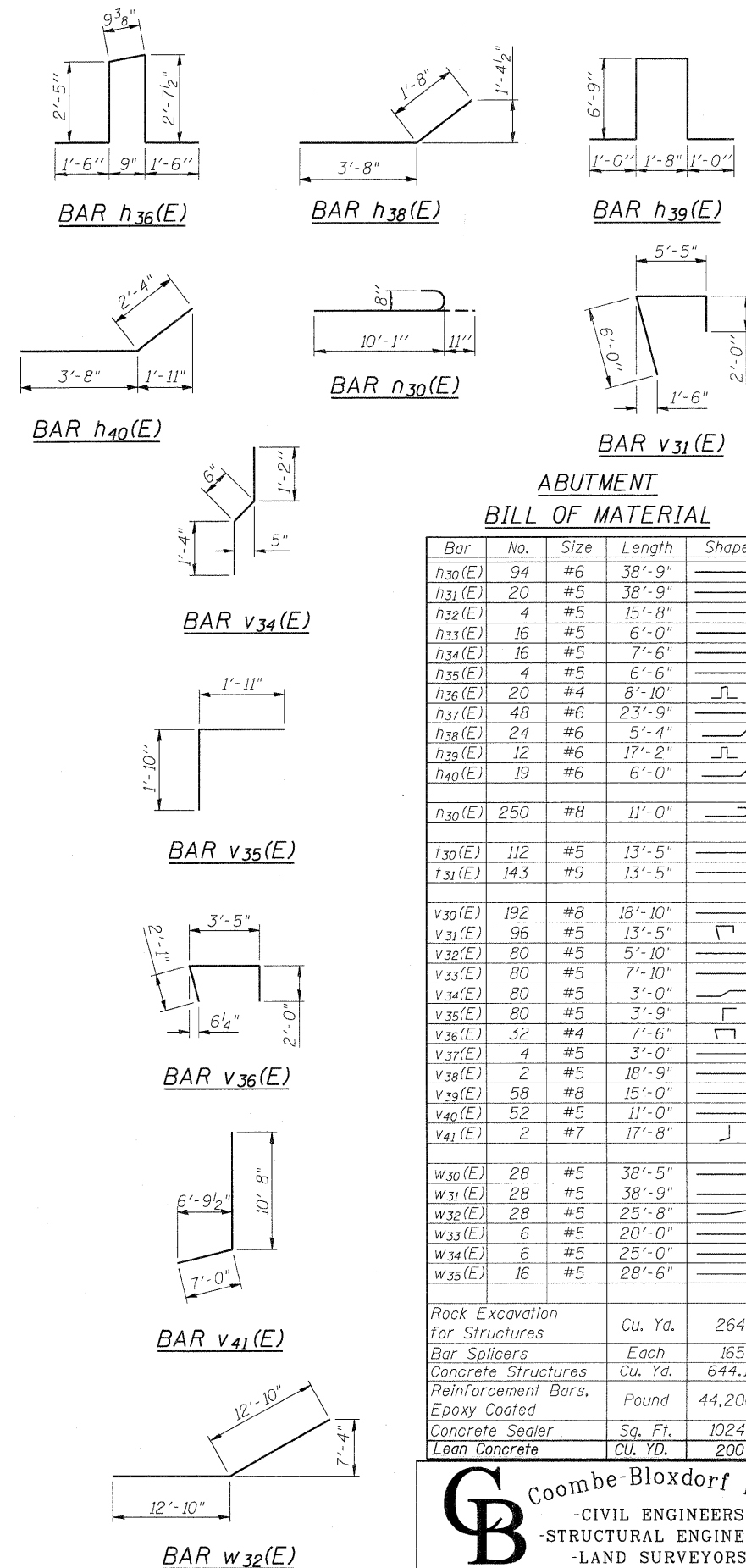
**SECTION C-C**



**SECTION A-A**



**SECTION D-D**



**ABUTMENT  
BILL OF MATERIAL**

Bar	No.	Size	Length	Shape
h30(E)	94	#6	38'-9"	—
h31(E)	20	#5	38'-9"	—
h32(E)	4	#5	15'-8"	—
h33(E)	16	#5	6'-0"	—
h34(E)	16	#5	7'-6"	—
h35(E)	4	#5	6'-6"	—
h36(E)	20	#4	8'-10"	┌
h37(E)	48	#6	23'-9"	—
h38(E)	24	#6	5'-4"	┌
h39(E)	12	#6	17'-2"	┌
h40(E)	19	#6	6'-0"	┌
n30(E)	250	#8	11'-0"	┌
t30(E)	112	#5	13'-5"	—
t31(E)	143	#9	13'-5"	—
v30(E)	192	#8	18'-10"	—
v31(E)	96	#5	13'-5"	┌
v32(E)	80	#5	5'-10"	—
v33(E)	80	#5	7'-10"	—
v34(E)	80	#5	3'-0"	—
v35(E)	80	#5	3'-9"	┌
v36(E)	32	#4	7'-6"	┌
v37(E)	4	#5	3'-0"	—
v38(E)	2	#5	18'-9"	—
v39(E)	58	#8	15'-0"	—
v40(E)	52	#5	11'-0"	—
v41(E)	2	#7	17'-8"	┌
w30(E)	28	#5	38'-5"	—
w31(E)	28	#5	38'-9"	—
w32(E)	28	#5	25'-8"	—
w33(E)	6	#5	20'-0"	—
w34(E)	6	#5	25'-0"	—
w35(E)	16	#5	28'-6"	—
Rock Excavation for Structures		Cu. Yd.	264	
Bar Splicers		Each	165	
Concrete Structures		Cu. Yd.	644.1	
Reinforcement Bars, Epoxy Coated		Pound	44,200	
Concrete Sealer		Sq. Ft.	1024	
Lean Concrete		CU. YD.	200	

FILE NAME = D264B88-shr-ABUT3.dgn	USER NAME = dwozniarski	DESIGNED - CME	REVISOR -
PLOT SCALE = 2:8.000000 1" = 16'-0"	PLOT DATE = 7/18/2011	CHECKED - MCB	REVISOR -
CB PROJECT NO 090855		DRAWN - MML	REVISOR -
		CHECKED - MCB	REVISOR -

**STATE OF ILLINOIS  
DEPARTMENT OF TRANSPORTATION**

**NORTH ABUTMENT DETAILS  
STRUCTURE NO. 098-0115**

SHEET NO. 70 OF 103 SHEETS

F.A.P. RTE. 646	SECTION 1B-2	COUNTY WHITESIDE	TOTAL SHEETS 257	SHEET NO. 173
CONTRACT NO. 64B80			ILLINOIS FED. AID PROJECT	

**CB Coombe-Bloxdorf P.C.**  
-CIVIL ENGINEERS-  
-STRUCTURAL ENGINEERS-  
-LAND SURVEYORS-  
Design Firm License No. 184-002703