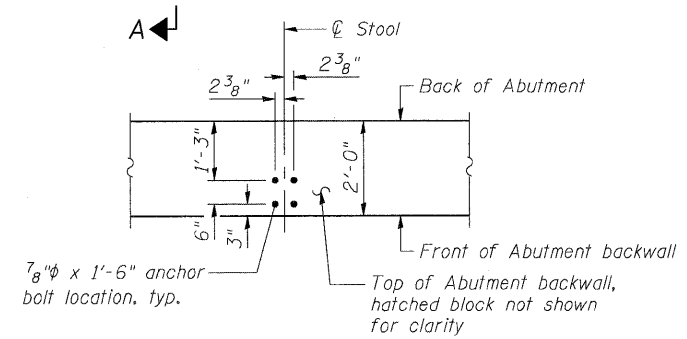
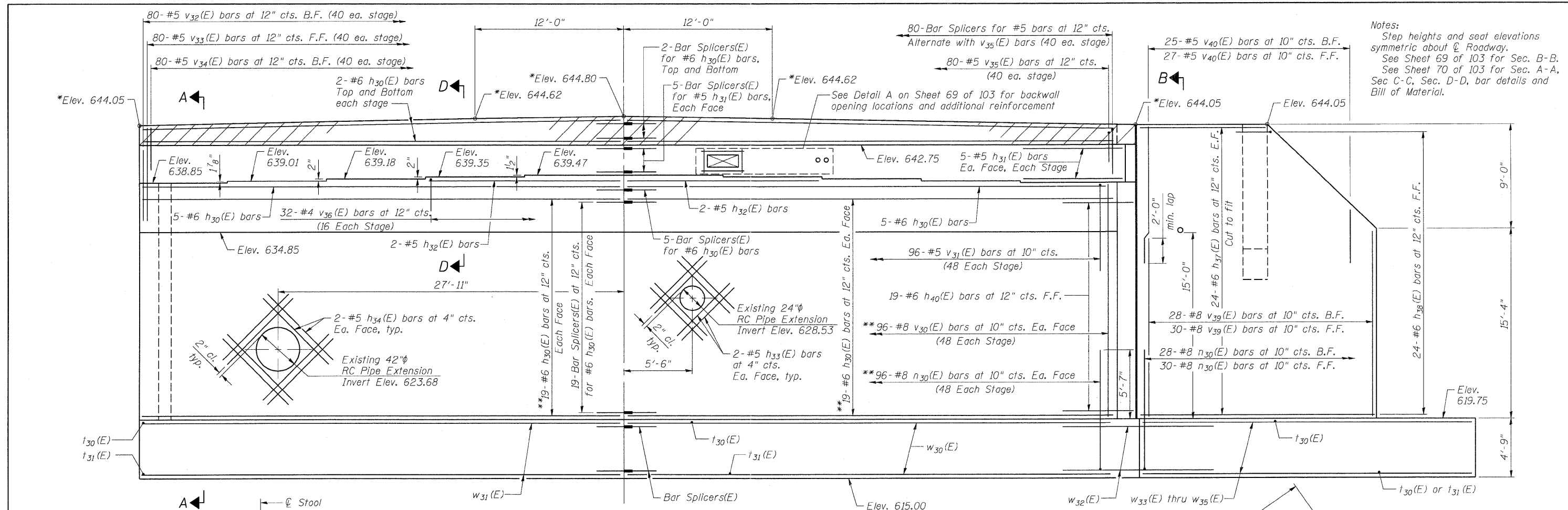


Notes:
 Step heights and seat elevations symmetric about \bar{C} Roadway.
 See Sheet 69 of 103 for Sec. B-B, Sec C-C, Sec. D-D, bar details and Bill of Material.

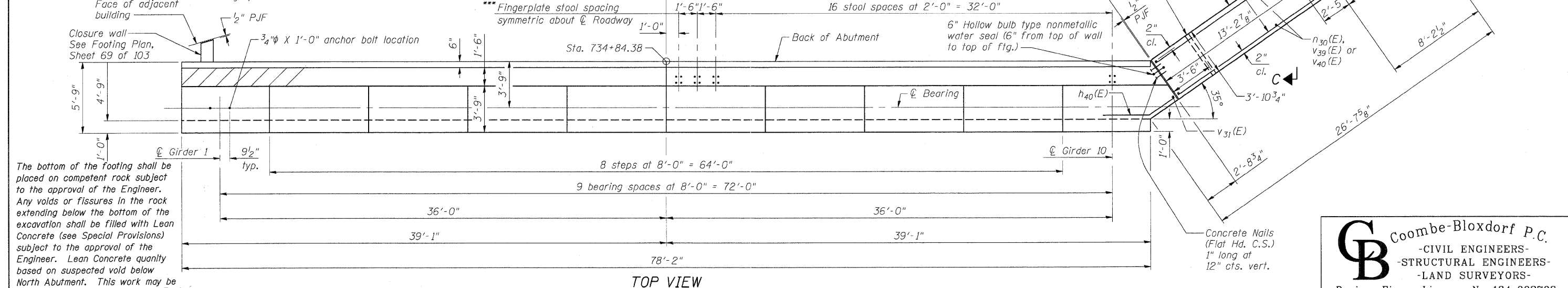


ANCHOR BOLT LAYOUT
 (at Fingerplate stool locations)

ELEVATION

*Elevation at Bk. of Abut.
 **Cut to Fit at RC Pipe openings
 B.F. = Back Face
 F.F. = Front Face

*** See Fingerplate Details on Sheets 49 thru 51 of 103 to determine fingerplate stool elevations



TOP VIEW

The bottom of the footing shall be placed on competent rock subject to the approval of the Engineer. Any voids or fissures in the rock extending below the bottom of the excavation shall be filled with Lean Concrete (see Special Provisions) subject to the approval of the Engineer. Lean Concrete quantity based on suspected void below North Abutment. This work may be omitted at the discretion of the Engineer.

FILE NAME =
 0264888-ah-ABUT1.dgn

CB PROJECT NO 09055

USER NAME = dwoznie-aski	DESIGNED - CME	REVISD -
PLOT SCALE = 4x8 1/2" / IN.	CHECKED - MCB	REVISD -
PLOT DATE = 7/18/2011	DRAWN - MML	REVISD -
	CHECKED - MCB	REVISD -

STATE OF ILLINOIS
 DEPARTMENT OF TRANSPORTATION

NORTH ABUTMENT
STRUCTURE NO. 098-0115

SHEET NO. 68 OF 103 SHEETS

CB Coombe-Bloxdorf P.C.
 - CIVIL ENGINEERS -
 - STRUCTURAL ENGINEERS -
 - LAND SURVEYORS -
 Design Firm License No. 184-002703

F.A.P. RTE.	SECTION	COUNTY	TOTAL SHEETS	SHEET NO.
646	1B-2	WHITESIDE	257	171

CONTRACT NO. 64B80
 ILLINOIS FED. AID PROJECT