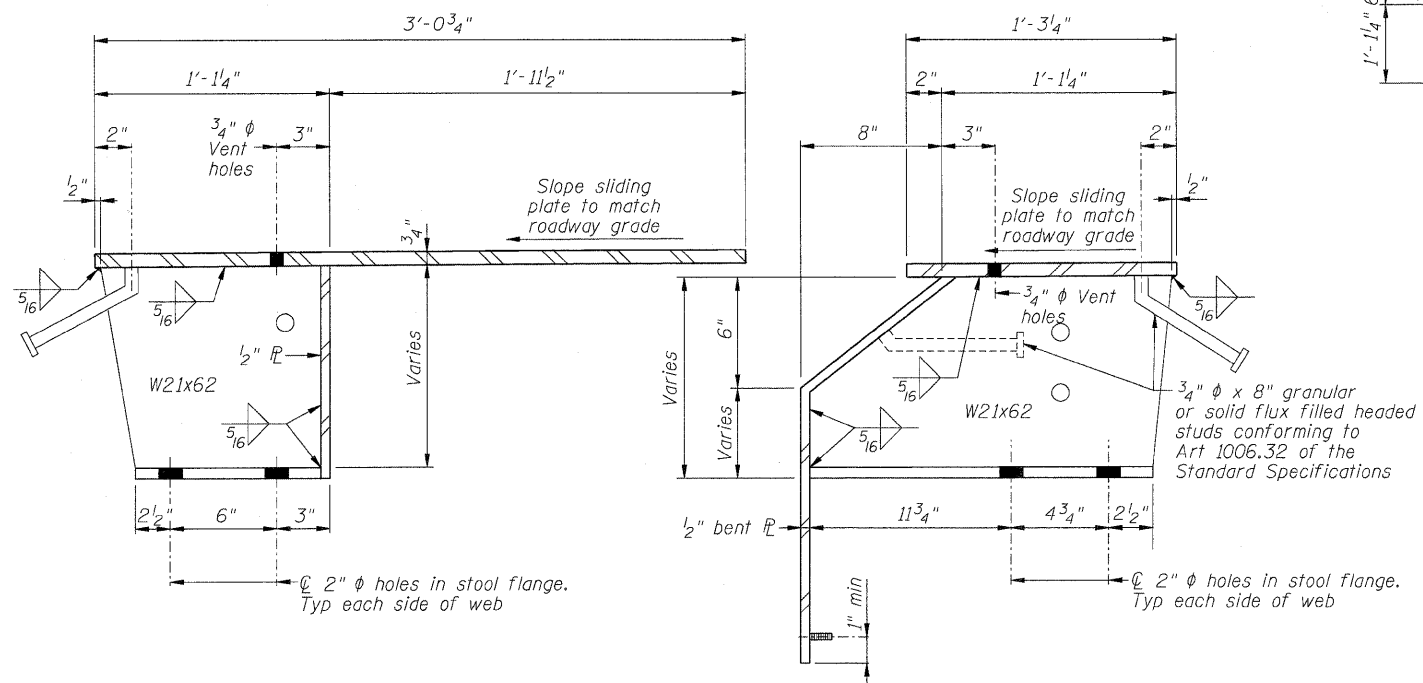
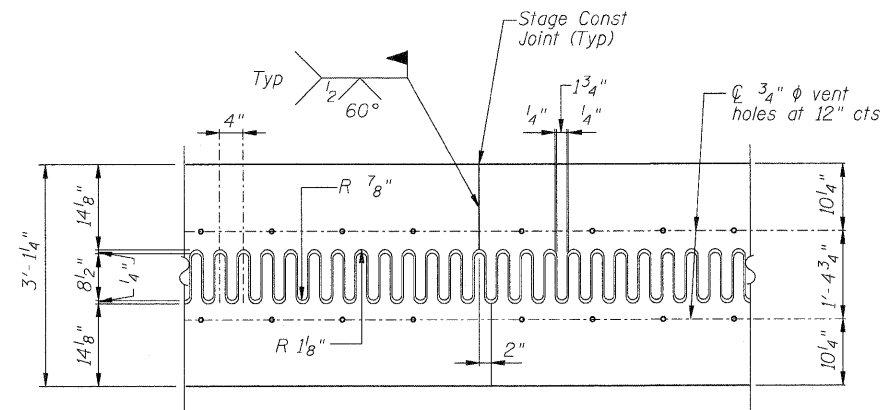


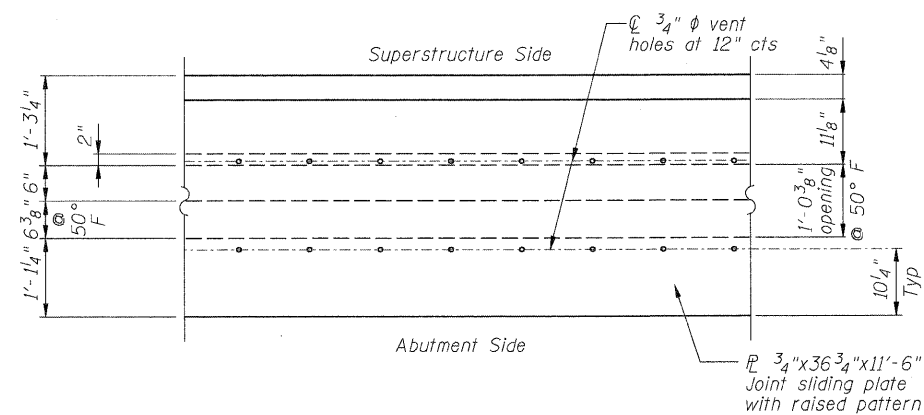
STOOLS DETAILS AT FINGER PLATE JOINT



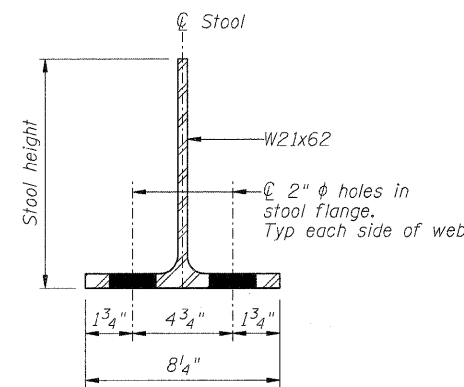
STOOL DETAILS AT SLIDING PLATE JOINT



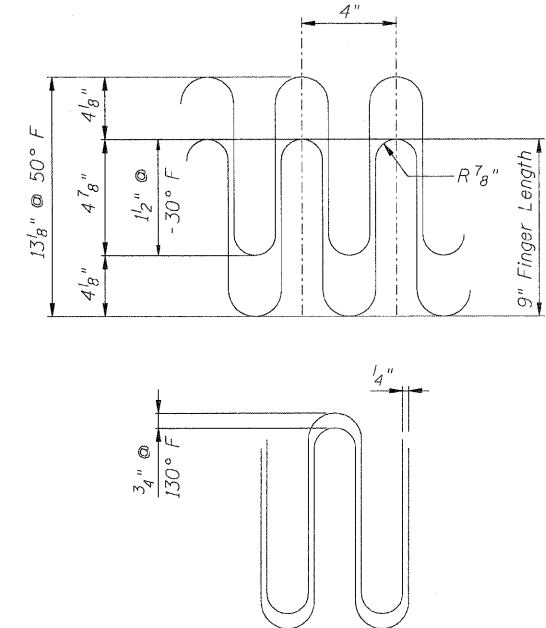
FLAME CUTTING DIAGRAM
(Proposed Finger PL - Cut from 2"x3'-1 1/4" PL)



SLIDING PLATE SETTING DIAGRAM



SECTION THRU STOOL



JOINT OPENING AND GEOMETRY DETAIL

NOTES:

Work this sheet with sheets 48-50 of 103.

The cost of all materials for finger plates, trough support brackets, and elastomeric troughs shall be included in cost of Finger Plate Expansion Joint, 5".

Finger plate and sliding plate expansion joints shall be assembled in their final relative position with the ends in place for shop inspection and acceptance.

All sliding plates shall have a raised pattern.

Finger plates and sliding plates shall conform to the requirements of AASHTO M270, Grade 50.

BILL OF MATERIAL

Item	Unit	Quantity
Finger Plate Expansion Joint, 5"	Foot	157

FILE NAME = 0264888-shr-fingerpl2.dgn

USER NAME = dwozniarski

DESIGNED - ACB

REVISD -

CHECKED - JMB

REVISD -

PLOT SCALE = 1:3333 1/4 IN.

REVISD -

DRAWN - RLK

REVISD -

PLOT DATE = 7/18/2011

REVISD -

CHECKED - ACB

REVISD -

STATE OF ILLINOIS
DEPARTMENT OF TRANSPORTATION

FINGER PLATE EXPANSION JOINT - DETAILS
STRUCTURE NO. 098-0115

SHEET NO. 51 OF 103 SHEETS

F.A.P. RTE.	SECTION	COUNTY	TOTAL SHEETS	SHEET NO.
646	IB-2	WHITESIDE	257	154
			CONTRACT NO. 64B80	
ILLINOIS FED. AID PROJECT				