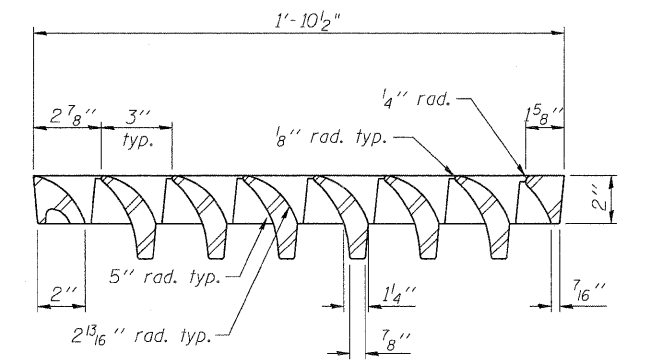
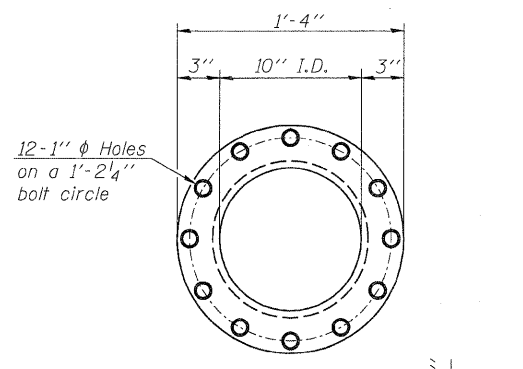


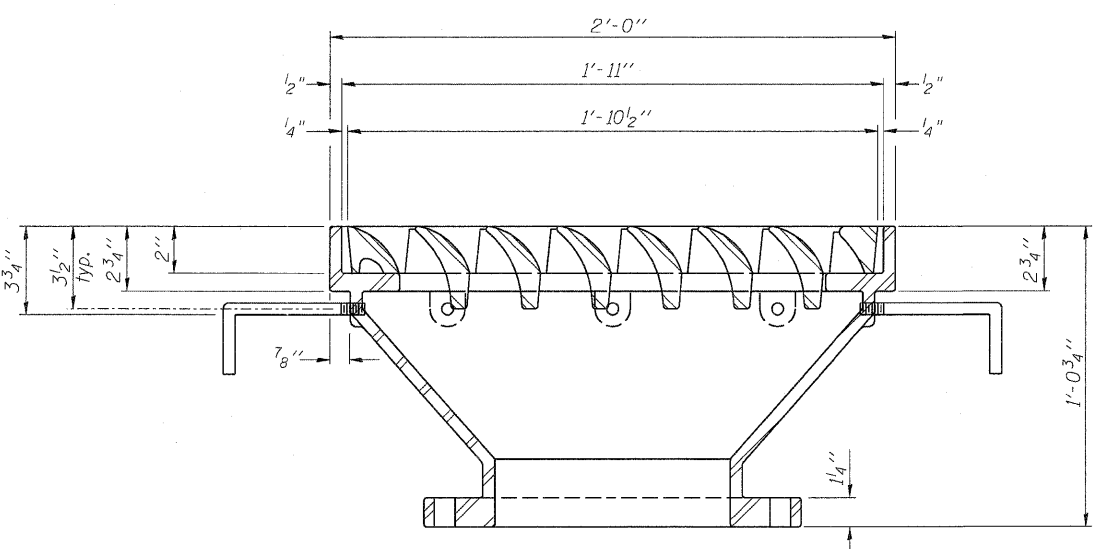
PLAN



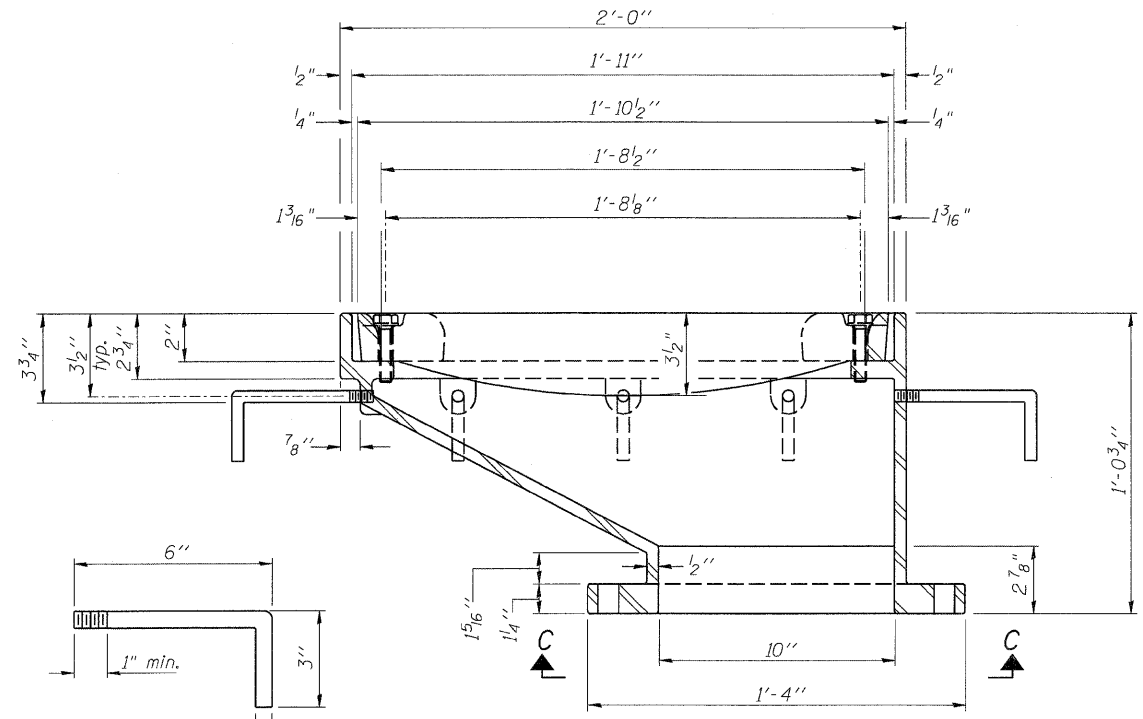
VANE GRATE DETAIL



DOWNSPOUT

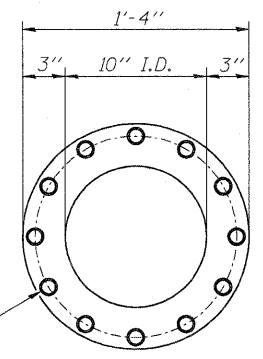


SECTION B-B

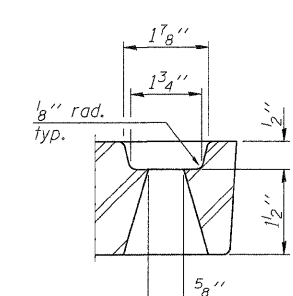


SECTION A-A

ANCHOR STUD DETAIL



VIEW C-C



GRATE BOLT HOLE DETAIL

Notes:
 All cast iron parts shall be gray iron conforming to the requirements of AASHTO M 105, Class 35B.
 Bolts, anchor studs, washers and nuts shall conform to the requirements of ASTM A 307 and shall be galvanized according to AASHTO M 232.
 All castings shall conform to the requirements of AASHTO M 306.
 Downspouts located on the exterior side of a painted steel fascia beam shall be painted with the finish coat specified for the exterior side of the fascia beam.
 As an alternate, bolts, anchor studs, washers and nuts may be stainless steel according to Article 1006.29(d) of the Standard Specifications.
 Structural steel weldments of equal sections and of the same configuration may be substituted for the cast iron scupper frame. Fillet or full penetration welds shall be used for the weldments. Details shall be submitted to the Engineer for approval. Structural steel weldments shall not be substituted for the cast iron scupper grate. Structural steel frames and downspouts shall be galvanized according to AASHTO M11.
 The Contractor shall take appropriate measures to assure that Protective Coat is not applied to the scupper.
 Cast of the Grate, Frame, Downspout, Anchor Studs, Bolts, Washers and Nuts including complete installation of the scupper shall be paid for at the contract unit price each for Drainage Scupper, DS-12M10.
 Drains shall be located clear of all diaphragms.

BILL OF MATERIAL

ITEM	UNIT	QUANTITY
Drainage Scupper, DS-12M10	Each	26

DS-12M10

7-1-10

FILE NAME = D264880-shr-scupper.dgn	USER NAME = dwoznioraki	DESIGNED - ACB	REVISED -
		CHECKED - JMB	REVISED -
	PLOT SCALE = 1.0000" / IN.	DRAWN - RLK	REVISED -
	PLOT DATE = 7/18/2011	CHECKED - ACB	REVISED -

STATE OF ILLINOIS
 DEPARTMENT OF TRANSPORTATION

DRAINAGE SCUPPER, DS-12M10
 STRUCTURE NO. 098-0115

SHEET NO. 47 OF 103 SHEETS

F.A.P. RTE.	SECTION	COUNTY	TOTAL SHEETS	SHEET NO.
646	IB-2	WHITESIDE	257	150
				CONTRACT NO. 64B80
ILLINOIS FED. AID PROJECT				