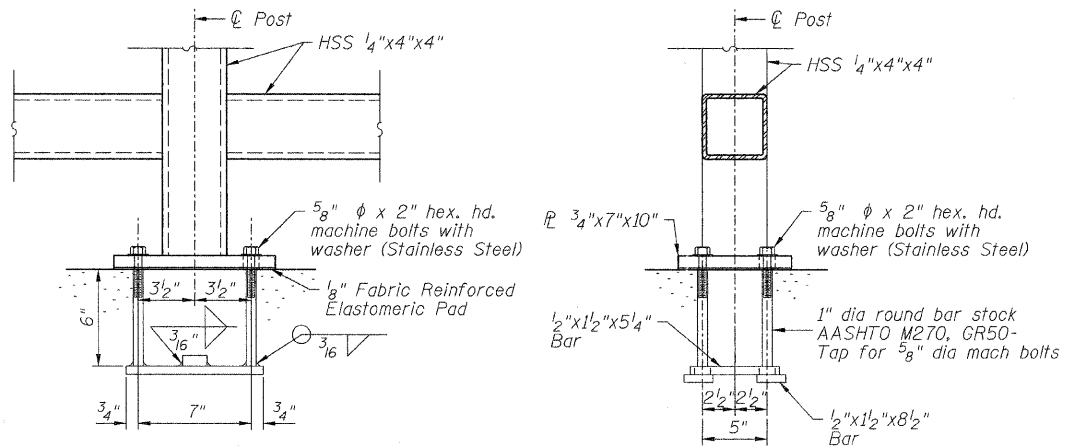
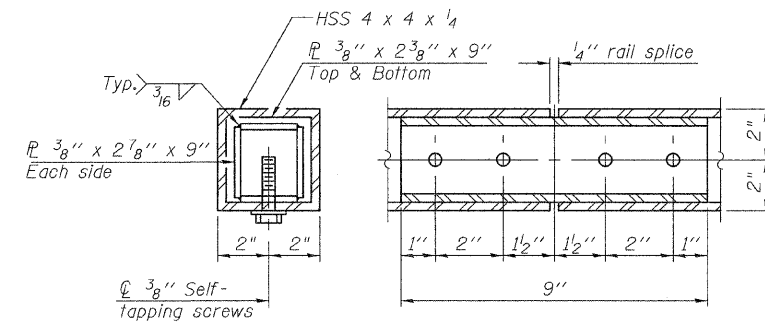


SECTION A-A



ANCHOR BOLT DETAILS

In lieu of the cast-in-place anchor device shown, the Contractor has the option of drilling and epoxy grouting 5/8"  $\phi$  anchor rods. Embedment shall be according to the manufacturer's specifications.



RAIL SPLICE

Notes:

Railing shall be according to Section 509 of the Standard Specifications, except as noted, and will be paid for at the contract unit price per foot for Parapet Railing, Special and Decorative Steel Railing.

Hollow structural steel tubing shall conform to the requirements of ASTM designation A 500, Grade B structural steel tubing.

All other structural steel shapes and plates shall conform to the requirements of AASHTO M270 Grade 36.

Railing shall be fabricated in lengths that include 3 or 4 posts.

Post base plates shall be flat with all surfaces smooth and free from warp and all edges smooth, straight and vertical. All platecuts shall be machine or machine flame cut.

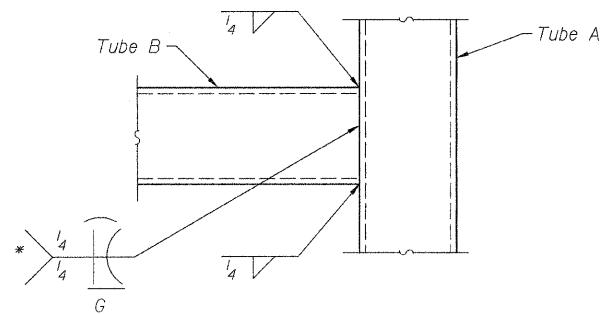
Steel post shims may be used under posts where required for alignment.

If drilling and epoxy grouting anchor rods in lieu of cast-in anchor assemblies the contractor shall use the capsule or adhesive cartridge and anchor rods approved by the Department. The contractor shall install these according to the manufacturer's recommendations and procedures. The Contractor shall remove excess epoxy from exposed surfaces.

For cleaning, painting and color of decorative steel railing see Special Provisions for Decorative Steel Railing.

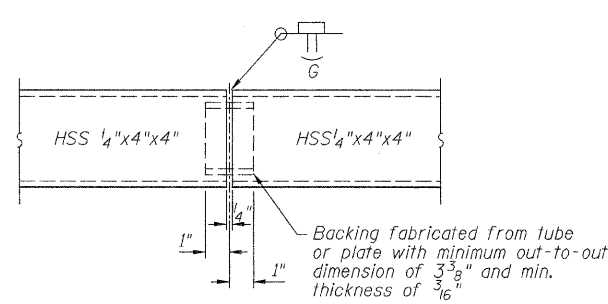
For cleaning, painting and color of parapet railing see Special Provision for Parapet Railing, Special.

The expansion criteria is 5/8"/100'/80°F.



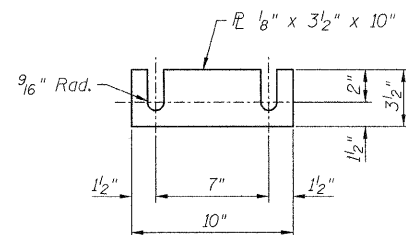
\* Grind edges of Tube B as required for weld access. Grind weld flush and smooth on sidewalk side. Transition fillet welds without interrupting weld.

TYPICAL WELDS AT TUBE INTERSECTS



SHOP RAIL SPLICE DETAIL

Backing fabricated from tube or plate with minimum out-to-out dimension of 3 3/8" and min. thickness of 3/16"



POST SHIM DETAIL

BILL OF MATERIAL

Item	Unit	Quantity
* Decorative Railing (Deck Mounted)	Foot	2131
* Decorative Railing (Parapet Mounted)	Foot	2135

\*All references to pay items "Decorative Steel Railing" and "Parapet Railing Special" shall be "Decorative Railing (Deck Mounted)" and "Decorative Railing (Parapet Mounted)" respectively.