

STEPS AT 300 (12) TO 400 (16) CTS.
* THE WALL ADJUSTMENTS SHALL BE MADE WITH CONCRETE BUILDING BRICK OR CLASS SI CONCRETE.
THE HEIGHT OF THE BOX MAY BE CONSTRUCTED 150 (6) SHORT TO ALLOW FOR FIELD ADJUSTMENTS.

NOTES

SEE STANDARD 602701 FOR DETAILS OF STEPS.
25 (1) PREFORMED EXPANSION JOINTS AS SHOWN SHALL BE PROVIDED ON EACH SIDE OF INLET.
CLASS SI CONCRETE OR PRECAST CONCRETE SHALL BE USED THROUGHOUT.
THE SIDE WALLS MAY BE BUILT AS PRECAST SEGMENTAL SECTIONS.
REINFORCEMENT FOR INLET SPECIAL NO. 5 SHALL BE ACCORDING TO INLET SPECIAL NO. 5 REINFORCEMENT DETAIL.

STEPS SHALL BE OMITTED WHEN DEPTH OF INLET IS LESS THAN 1.5 m (5 ft.)

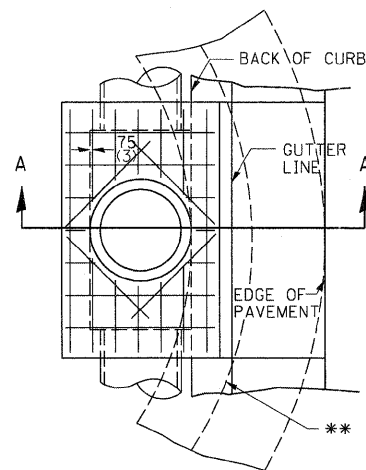
THE INLET SHALL BE CAST IN PLACE OR PRECAST.

EXCEPT AS NOTED HEREON INLET SPECIAL NO. 5 SHALL BE CONSTRUCTED IN ACCORDANCE WITH SECTION 602 OF THE STANDARD SPECIFICATIONS.

THE CONTRACT UNIT PRICE EACH FOR INLET SPECIAL NO. 5 SHALL INCLUDE THE COST OF FURNISHING AND INSTALLING THE FRAME, LID, REINFORCEMENT BARS, FLOOR AND TOP SLABS, CAST IRON STEPS (IF USED).

THE CURB AND GUTTER WILL BE PAID FOR SEPARATELY AND WILL BE MEASURED THROUGH THE INLET.

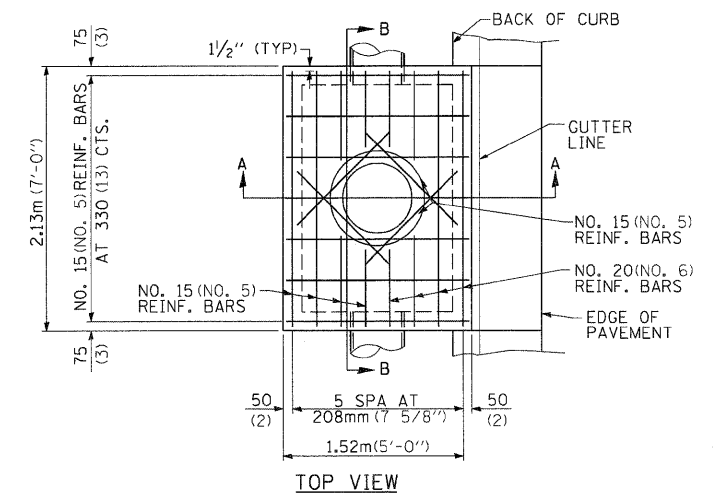
THE CURB AND GUTTER ADJACENT TO AND 1.8m (6 FT) ON EITHER SIDE OF THE INLET SHALL BE CONSTRUCTED AS SHOWN WITH NO ADDITIONAL COMPENSATION FOR THE TRANSITION.



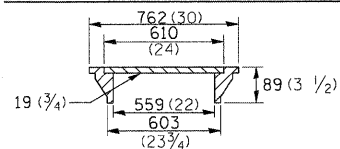
** WHEN INLET IS CONSTRUCTED IN RETURN, THE TOP OF SLAB SHALL CONFORM TO THE RADIUS OF THE RETURN.

* THE WALL ADJUSTMENTS SHALL BE MADE WITH CONCRETE BUILDING BRICK OR CLASS SI CONCRETE.
THE HEIGHT OF THE BOX MAY BE CONSTRUCTED 150 (6) SHORT TO ALLOW FOR FIELD ADJUSTMENTS.

** 1.2m (4'-0") TO 2.4m (8'-0") - NO. 15 (NO. 5) REINF. BARS AT 300 (12) CTS. E.W.
2.4m (8'-0") TO 4.0m (13'-0") - NO. 15 (NO. 5) REINF. BARS AT 250 (10) CTS. E.W.
4.0m (13'-0") TO 4.6m (15'-0") - NO. 15 (NO. 5) REINF. BARS AT 200 (8) CTS. E.W.



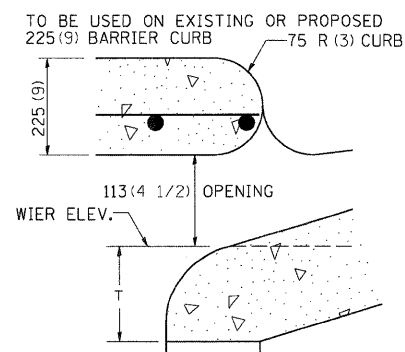
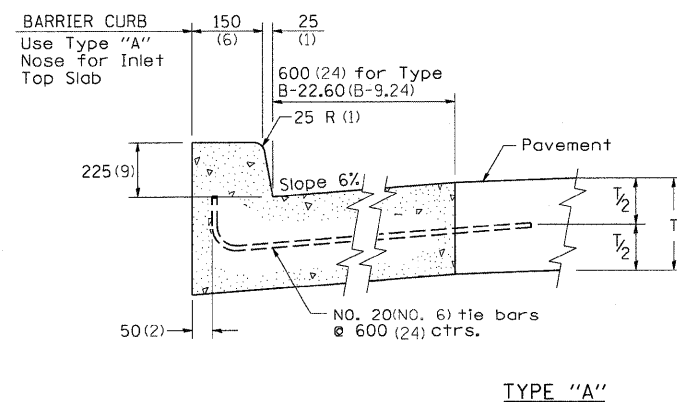
LIGHT WEIGHT MANHOLE CASTING



TOTAL WEIGHT 73 KG. (160 LBS.)

INLET SPECIAL NO. 5

INLET SPECIAL NO. 5 REINFORCEMENT DETAIL



NOSE TYPE FOR INLET TOP SLAB DETAIL

NOTES

ALL DIMENSIONS ARE IN MILLIMETERS (INCHES) UNLESS OTHERWISE NOTED.

TOP SLAB REINFORCEMENT TO BE EPOXY COATED BARS.

FILE NAME = 0264880-shd-deta11s4.dgn	USER NAME = dwoznarski	DESIGNED -	REVISED - 02-21-11	STATE OF ILLINOIS DEPARTMENT OF TRANSPORTATION	INLET SPECIAL NO. 5 DETAILS			F.A.P. RTE. 646	SECTION IB-2	COUNTY WHITESIDE	TOTAL SHEETS 257	SHEET NO. 85
	PLOT SCALE = 50.00' / IN.	CHECKED -	REVISED -		SCALE: N/A	SHEET NO. 1 OF 1 SHEETS	STA.	TO STA.	CONTRACT NO. 64B80			
	PLOT DATE = 7/14/2011	DATE - 2-22-201	REVISED -						ILLINOIS FED. AID PROJECT			