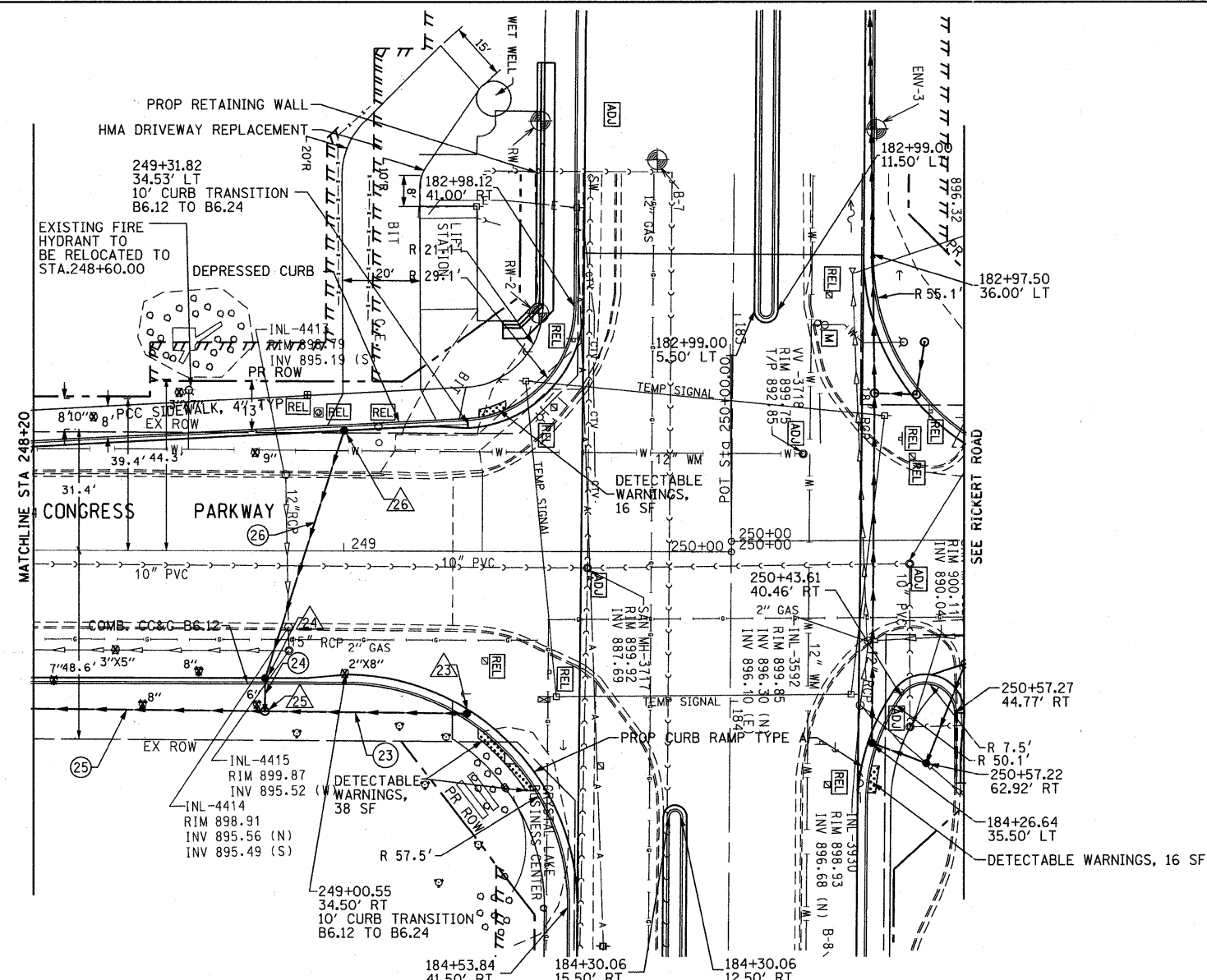
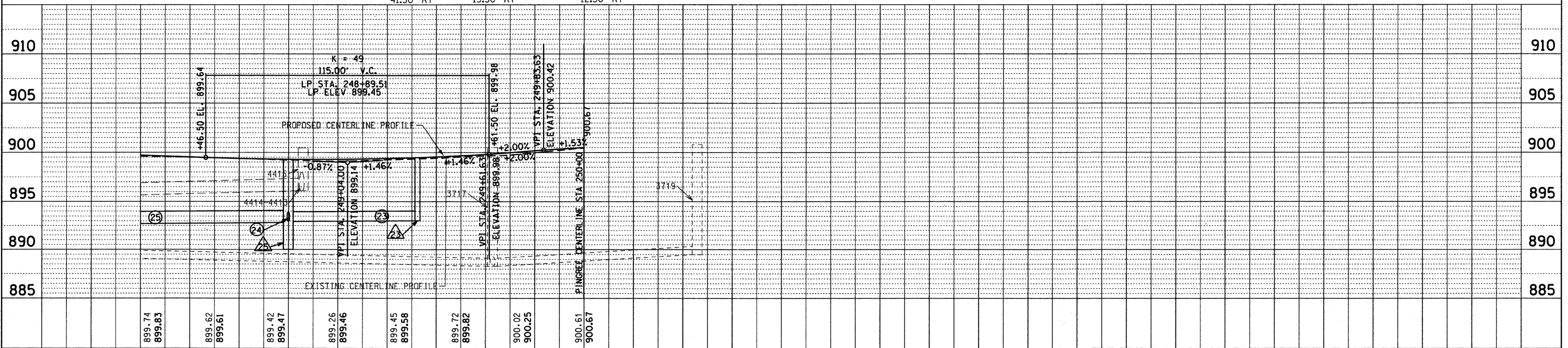


DATE	
BY	
REVISIONS	
PLAN	NO. / DATE
NOTE BOOK	NO. / DATE
ALIGNED	CHECKED
PLOTTED	CHECKED
CADD FILE NAME	

DATE	
BY	
REVISIONS	
PROFILE	NO. / DATE
NOTE BOOK	NO. / DATE
GRADES CHECKED	
STRUCTURE NOTATIONS CHKD	



- 23 CB, TYPE A, 4'Ø
F/L=898.78
249+31.8, 42.0'RT
INV:893.81, 12"W
- 24 CB, TYPE A, 4'Ø
F/L=898.73
248+80, 33.00'RT
INV:893.73, 12"N
INV:893.63, 12"S
- 25 MH, TYPE A, 4'Ø CLOSED LID
RIM=899.50
248+80.00, 41.50'RT
INV:893.48, 15"W
INV:893.58, 12"N
INV:893.58, 12"E
- 26 INLET, TYPE A
F/L=900.52
249+00, 31.00'LT
INV:895.43, 12"S
- 23 52LF STORM SEW CL A 2 12 @ 0.44%
- 24 9LF STORM SEW CL A 2 12 @ 0.50%
- 25 128LF STORM SEW CL A 2 15 @ 0.32%
- 26 67LF STORM SEWER (WM REQ) 12 INCH @ 2.54%
- DETECTABLE WARNINGS



FILE NAME = F:\396-064 Pingree Road\CADD_Sheets\1dot	USER NAME = dalj	DESIGNED - BD	REVISED -	STATE OF ILLINOIS DEPARTMENT OF TRANSPORTATION	PINGREE ROAD RECONSTRUCTION PLAN AND PROFILE - CONGRESS PARKWAY	F.A.U. RTE. 126	SECTION 95-00090-01-FP	COUNTY McHENRY	TOTAL SHEETS 92	SHEET NO. 26	
FORMAT: D163519-ht-pln-pr-f-8.dgn	PLOT SCALE = 20,000' / IN.	DRAWN - DC	REVISED -			SCALE: HORIZ. 1"=20' VERT. 1"=5'		SHEET NO. 26 OF 92 SHEETS		CONTRACT NO. 63519	
PLOT DATE = 8/26/2011		CHECKED - BD	REVISED -			STA. 248+20 TO STA. 250+00		ILLINOIS FED. AID PROJECT			
		DATE - 08-29-2011	REVISED -								