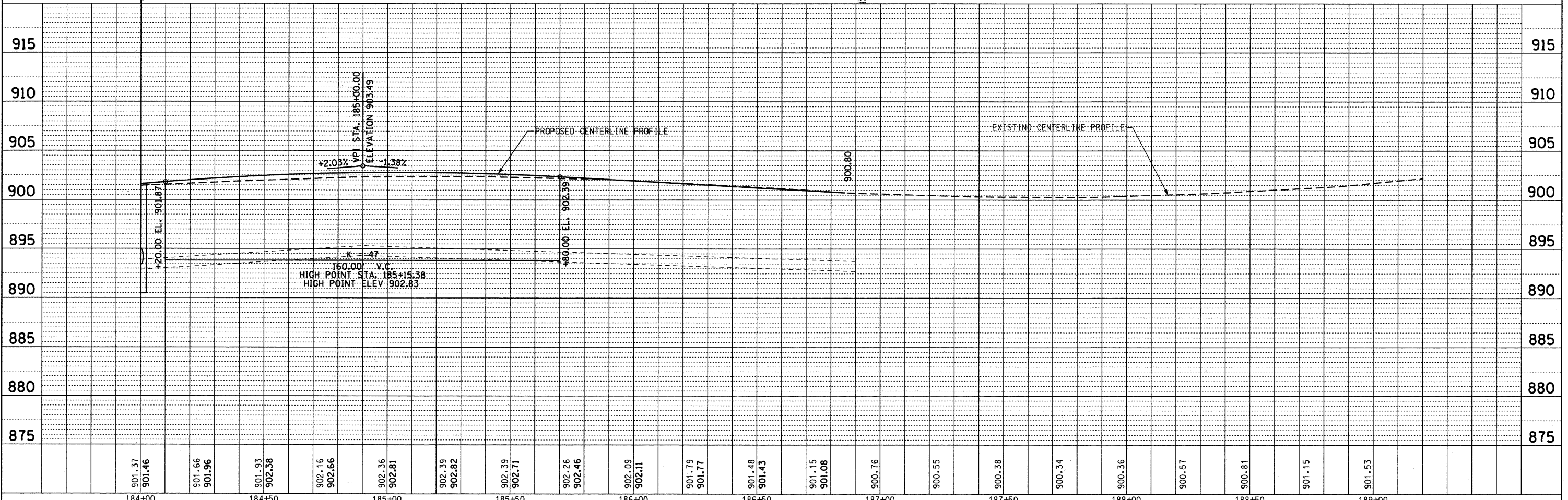
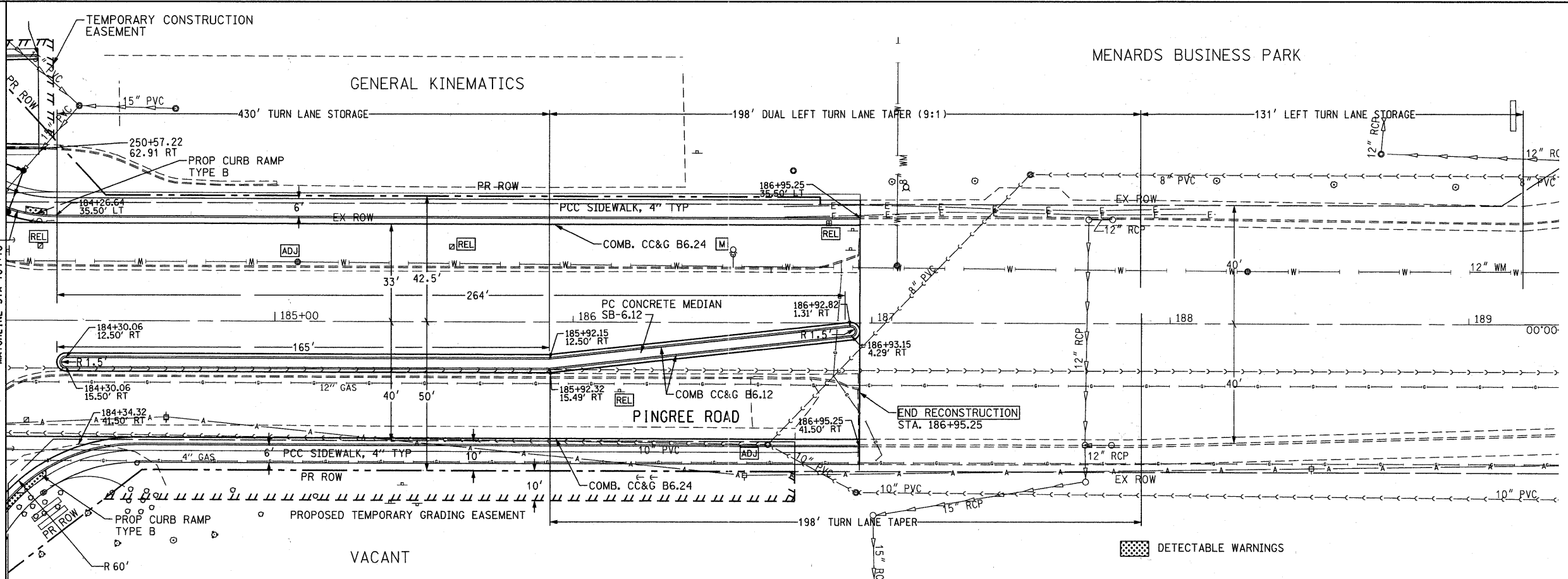


PLAN	REVISIONS	DATE
NO.	NO.	
NO.	NO.	
NO.	NO.	
NO.	NO.	
NO.	NO.	

PROFILE	REVISIONS	DATE
NO.	NO.	
NO.	NO.	
NO.	NO.	
NO.	NO.	
NO.	NO.	

NOTES:
 1) STATION/OFFSET CALLS FOR ROADWAY MEASURED TO BACK OF CURB.
 2) STORM WATER STRUCTURE OFFSET LOCATIONS GIVEN ON THE DETAILED PLANS ARE TO THE FOLLOWING POINTS:
 A) FOR STRUCTURES FALLING IN THE CURB LINE - TO THE EDGE OF PAVEMENT; B) FOR ALL OTHER STRUCTURE LOCATIONS - TO THE CENTER OF THE STRUCTURE



FILE NAME = F:\396-064 Pingree Road\CADD_Sheets\1dot	USER NAME = daly	DESIGNED - BD	REVISED -
Format\0163519-ah-p\prf_4.dgn		DRAWN - DC	REVISED -
PLOT SCALE = 28.000' / IN.		CHECKED - BD	REVISED -
PLOT DATE = 8/26/2011		DATE - 08-29-2011	REVISED -

STATE OF ILLINOIS
DEPARTMENT OF TRANSPORTATION

PINGREE ROAD RECONSTRUCTION
PLAN AND PROFILE / PINGREE ROAD
HORIZ. 1"=20'
SCALE: VERT. 1"=5'
SHEET NO. 22 OF 92 SHEETS
STA. 184+10 TO STA. 189+30

F.A.U. RTE. 126	SECTION 95-00090-01-FP	COUNTY McHENRY	TOTAL SHEETS 92	SHEET NO. 22
CONTRACT NO. 63519			ILLINOIS FED. AID PROJECT	