

STATE OF ILLINOIS
DEPARTMENT OF TRANSPORTATION
DIVISION OF HIGHWAYS

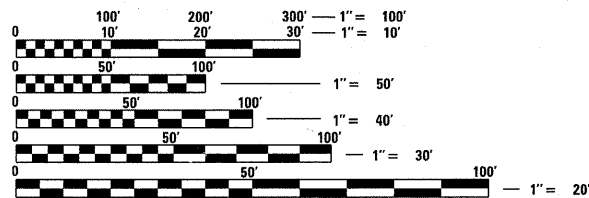
**PROPOSED
HIGHWAY PLANS**

FAP ROUTE 347: IL ROUTE 38 (ROOSEVELT RD)
AT KAUTZ RD (DUPAGE COUNTY LINE)
SECTION 2011-201-DM
PROJECT : ACF-0347(027)
BUILDING DEMOLITION
KANE COUNTY

C-91-090-12

FOR INDEX OF SHEETS, SEE SHEET NO. 2

THE PROJECT IS LOCATED IN
THE CITY OF WEST CHICAGO

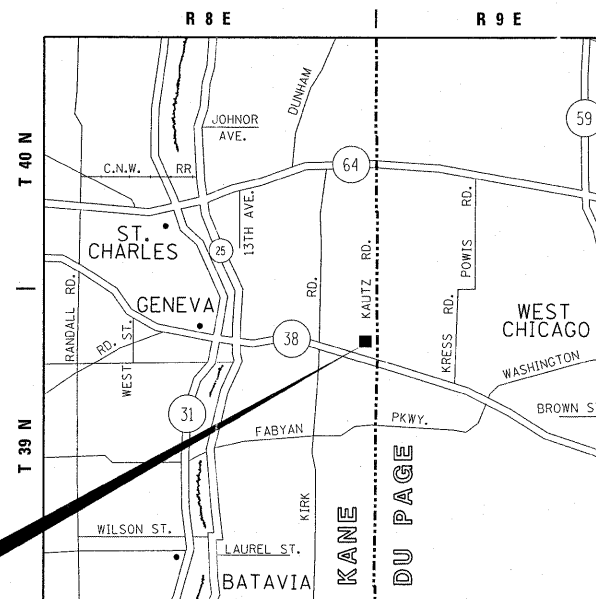


FULL SIZE PLANS HAVE BEEN PREPARED USING STANDARD ENGINEERING SCALES. REDUCED SIZED PLANS WILL NOT CONFORM TO STANDARD SCALES. IN MAKING MEASUREMENTS ON REDUCED PLANS, THE ABOVE SCALES MAY BE USED.

J.U.L.I.E.
JOINT UTILITY LOCATION INFORMATION FOR EXCAVATION
1-800-892-0123
OR 811

PROJECT ENGINEER: KARI SMITH (847) 705-4437
PROJECT MANAGER: KEN ENG (847) 705-4247

CONTRACT NO. 60R43



PROJECT LOCATION

GENEVA TOWNSHIP



F.A.P. RTE.	SECTION	COUNTY	TOTAL SHEETS	SHEET NO.
347	2011-201-DM	KANE	7	1
		ILLINOIS	CONTRACT NO. 60R43	

D-91-090-12



LOCATION OF SECTION INDICATED THUS: - [black rectangle] -

TRAFFIC DATA:

2009 ADT = 17,900

STATE OF ILLINOIS
DEPARTMENT OF TRANSPORTATION
DIVISION OF HIGHWAYS

SUBMITTED SEPTEMBER 9, 20 11
Diane M. O'Keefe *gc*
DEPUTY DIRECTOR OF HIGHWAYS, REGION ENGINEER
October 14 20 11
Scott E. Stett *P.E. jr*
acting ENGINEER OF DESIGN AND ENVIRONMENT
October 14 20 11
Christine M. Reed *gc*
DIRECTOR OF HIGHWAYS, CHIEF ENGINEER

PRINTED BY THE AUTHORITY
OF THE STATE OF ILLINOIS