

ROUTE	SECTION	COUNTY	TOTAL SHEETS	SHEET NUMBER
FAI 290	2011-061-BR	COOK & DUPAGE	29	6

Contract 60P79

**DESIGN DATA**

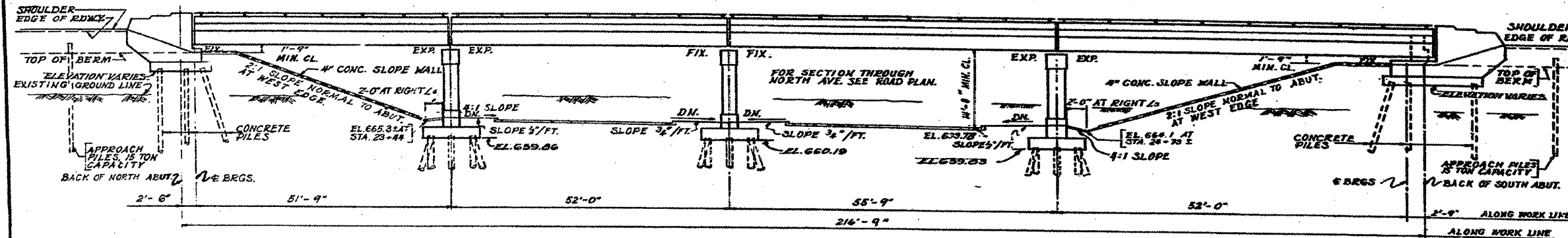
**DESIGN LOADS**  
 LL: H20-S16-44  
 12" FUTURE WEARING SURFACE

**DESIGN STRESSES**  
 CONCRETE:  
 f<sub>c</sub> = 3500 R.S.I.  
 f<sub>t</sub> = 1800 R.S.I.  
 f<sub>c</sub> = 1000 R.S.I. (WITH EARTH PRESSURE)  
 f<sub>t</sub> = 75 R.S.I. (FOOTINGS)  
 n = 10

REINFORCING STEEL  
 f<sub>s</sub> = 20,000 R.S.I.  
 STRUCTURAL STEEL  
 f<sub>s</sub> = 10,000 R.S.I.

**FOUNDATION**  
 ABUTS: 30 TON CONCRETE PILES  
 PIERS: 30 TON TIMBER PILES

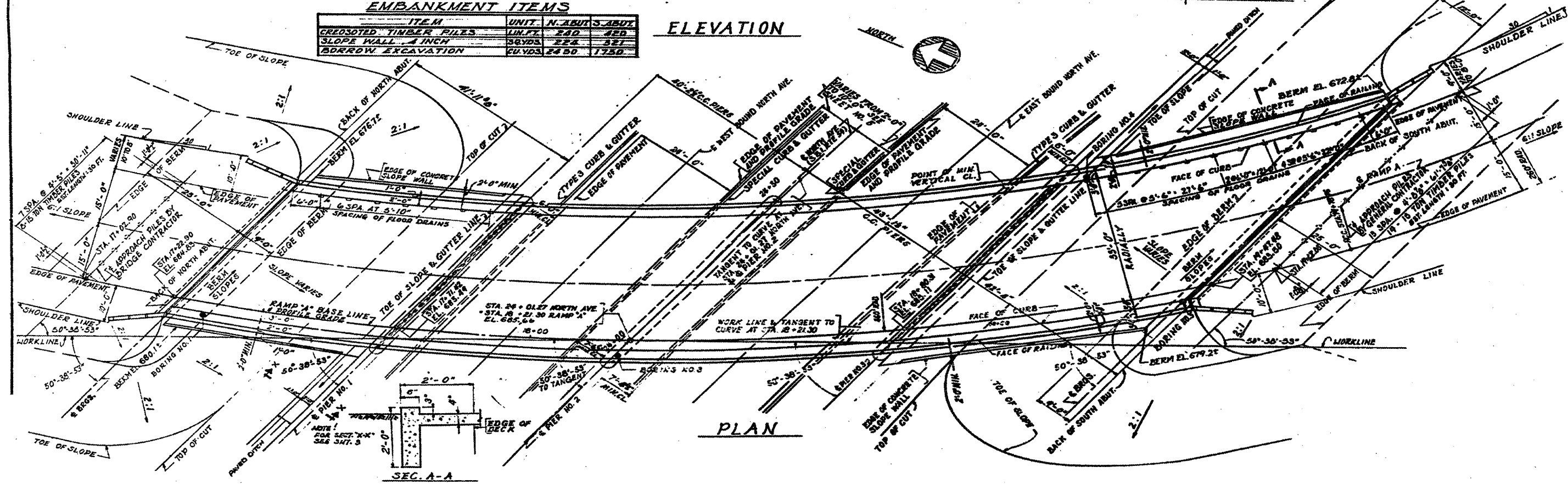
**DESIGN DESIGNATION**  
 RAMP "A" 2630-T-30  
 NORTH AVE. 4357-T-40



**EMBANKMENT ITEMS**

ITEM	UNIT	N. ABUT.	S. ABUT.
CREOSOTED TIMBER PILES	LN. FT.	240	420
SLOPE WALL - 4 INCH	36 VDS.	224	321
BORROW EXCAVATION	CU. VDS.	2450	1750

**ELEVATION**



**PLAN**

**FOR INFORMATION ONLY**

ILLINOIS DEPARTMENT OF  
 TRANSPORTATION  
 SN 022-0015  
 LOCATION NO. 1  
 I-290 RAMP A-OVER IL 64 (NORTH AVE.)  
 GENERAL PLAN AND ELEVATION

SHEET 1 OF 10