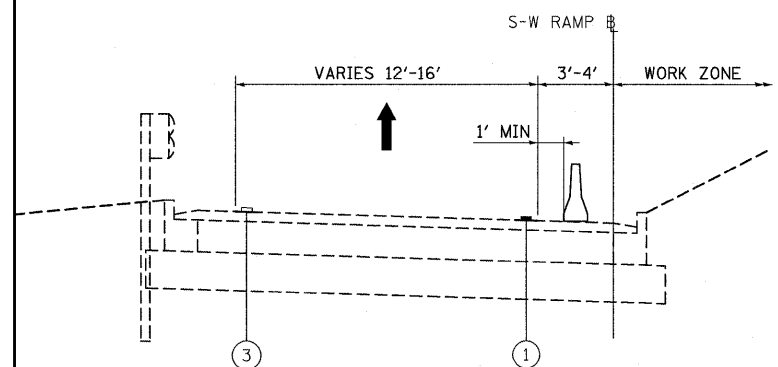
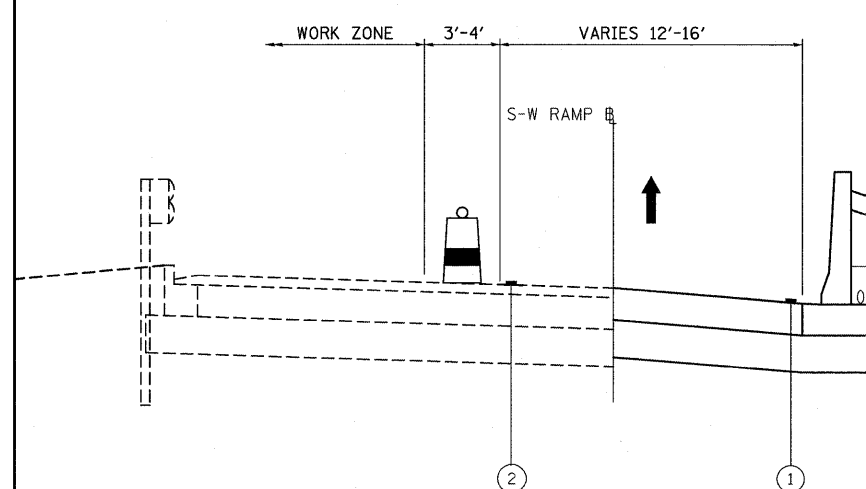


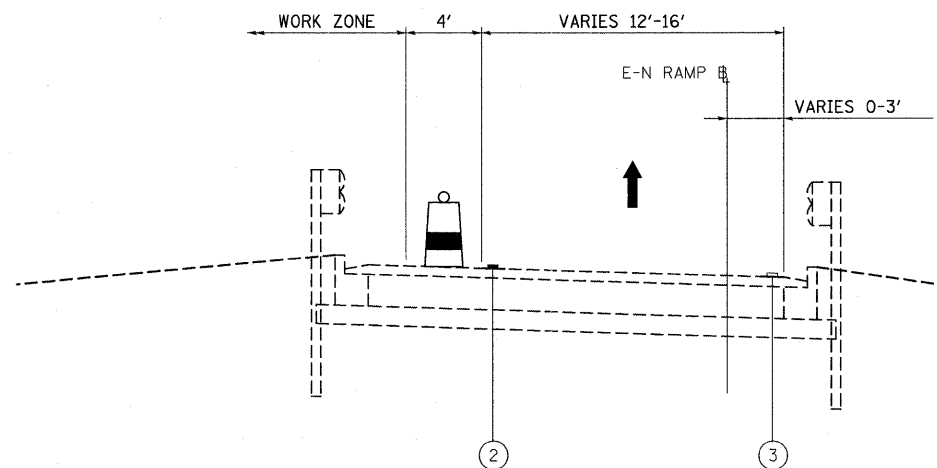
S-E RAMP MOT STAGE 1 & 2



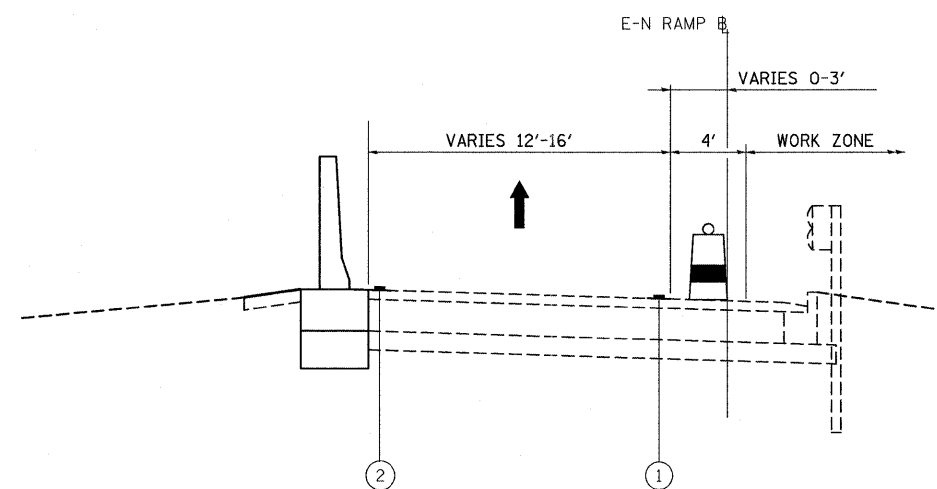
S-W RAMP MOT STAGE 1



S-W RAMP MOT STAGE 2



E-N RAMP MOT STAGE 1



E-N RAMP MOT STAGE 2

LEGEND:

- EXISTING PAVEMENT MARKING
- WET REFLECTIVE TEMPORARY TAPE, TYPE III
- PLASTIC DRUMS @
50' C-C WITH STEADY BURN LIGHTS
50' C-C ON TANGENTS
25' C-C ON TAPERS AND LANE SHIFTS
25' C-C ON RAMP GORES
- TRAFFIC DIRECTION
- TEMPORARY CONCRETE BARRIER

MOT PAVEMENT MARKING LEGEND:

- WET REFLECTIVE TEMPORARY TAPE, TYPE III 4" (WHITE)
- WET REFLECTIVE TEMPORARY TAPE, TYPE III 4" (YELLOW)
- EXISTING PAVEMENT MARKING

S - E RAMP SUGGESTED MAINTENANCE OF TRAFFIC - STAGE 1 & 2

STAGING:

1. MAINTAIN RAMP CLOSURE FROM CONTRACT 60D61, CONGRESS PARKWAY BRIDGE REHABILITATION. SEE SPECIAL PROVISIONS FOR INTERIM COMPLETION DATE AND CONTRACTOR COOPERATION.

CONSTRUCTION:

1. REMOVE EXISTING GUARDRAIL AND CURB AND GUTTER TO THE LIMITS SHOWN ON THE PLANS.
2. CONSTRUCT PROPOSED BARRIER WALL, GUARDRAIL, AND CURB AND GUTTER AS SHOWN ON THE PLANS.

S - W RAMP SUGGESTED MAINTENANCE OF TRAFFIC - STAGE 1

STAGING:

1. INSTALL TEMPORARY TRAFFIC CONTROL DEVICES, TEMPORARY CONCRETE BARRIER WALL AND SIGNING. REMOVE CONFLICTING PAVEMENT MARKINGS. INSTALL PAVEMENT MARKING TAPE AS SHOWN ON THE PLANS.
2. SHIFT LANE TOWARDS THE INSIDE AS SHOWN ON THE PLANS.
3. UTILIZE DISTRICT DETAIL TC-17 FOR PARTIAL CLOSURES ON RAMP.
4. UTILIZE DISTRICT DETAIL TC-18 FOR SIGNING FOR FLAGGING OPERATIONS AT WORK ZONE OPENINGS.

CONSTRUCTION:

1. REMOVE EXISTING GUARDRAIL AND CURB AND GUTTER TO THE LIMITS SHOWN ON THE PLANS.
2. CONSTRUCT PROPOSED BARRIER WALL, CRASHWALL AND CURB AND GUTTER AS SHOWN ON THE PLANS.

S - W RAMP SUGGESTED MAINTENANCE OF TRAFFIC - STAGE 2

STAGING:

1. INSTALL TEMPORARY TRAFFIC CONTROL DEVICES AND SIGNING. REMOVE CONFLICTING PAVEMENT MARKINGS. INSTALL PAVEMENT MARKING TAPE AS SHOWN ON THE PLANS.
2. SHIFT LANE TOWARDS THE OUTSIDE AS SHOWN ON THE PLANS.
3. UTILIZE DISTRICT DETAIL TC-17 FOR PARTIAL CLOSURES ON RAMP.
4. UTILIZE DISTRICT DETAIL TC-18 FOR SIGNING FOR FLAGGING OPERATIONS AT WORK ZONE OPENINGS.

CONSTRUCTION:

1. REMOVE EXISTING GUARDRAIL AND CURB AND GUTTER TO THE LIMITS SHOWN ON THE PLANS.
2. CONSTRUCT PROPOSED BARRIER WALL, GUARDRAIL, AND CURB AND GUTTER AS SHOWN ON THE PLANS.

E - N RAMP SUGGESTED MAINTENANCE OF TRAFFIC - STAGE 1

STAGING:

1. INSTALL TEMPORARY TRAFFIC CONTROL DEVICES AND SIGNING. REMOVE CONFLICTING PAVEMENT MARKINGS. INSTALL PAVEMENT MARKING TAPE AS SHOWN ON THE PLANS.
2. SHIFT LANE TOWARDS THE OUTSIDE AS SHOWN ON THE PLANS.
3. UTILIZE DISTRICT DETAIL TC-17 FOR PARTIAL CLOSURES ON RAMP.
4. UTILIZE DISTRICT DETAIL TC-18 FOR SIGNING FOR FLAGGING OPERATIONS AT WORK ZONE OPENINGS.

CONSTRUCTION:

1. REMOVE EXISTING GUARDRAIL AND CURB AND GUTTER TO THE LIMITS SHOWN ON THE PLANS.
2. CONSTRUCT PROPOSED BARRIER WALL, GUARDRAIL AND CURB AND GUTTER AS SHOWN ON THE PLANS.

E - N RAMP SUGGESTED MAINTENANCE OF TRAFFIC - STAGE 2

STAGING:

1. INSTALL TEMPORARY TRAFFIC CONTROL DEVICES AND SIGNING. REMOVE CONFLICTING PAVEMENT MARKINGS. INSTALL PAVEMENT MARKING TAPE AS SHOWN ON THE PLANS.
2. SHIFT LANE TOWARDS THE INSIDE AS SHOWN ON THE PLANS.
3. UTILIZE DISTRICT DETAIL TC-17 FOR PARTIAL CLOSURES ON RAMP.
4. UTILIZE DISTRICT DETAIL TC-18 FOR SIGNING FOR FLAGGING OPERATIONS AT WORK ZONE OPENINGS.
5. UTILIZE HIGHWAY STANDARD 701401 FOR AN EXPRESSWAY LANE CLOSURE ON EB CONGRESS PARKWAY TO CLEAN AND REPAIR DRAINAGE SCUPPER. THIS WORK SHALL BE COORDINATED WITH CONTRACT 60D61, CONGRESS PARKWAY BRIDGE REHABILITATION.

CONSTRUCTION:

1. REMOVE EXISTING GUARDRAIL AND CURB AND GUTTER TO THE LIMITS SHOWN ON THE PLANS.
2. INSTALL DRAINAGE STRUCTURES AND STORM SEWER BY DES PLAINES STREET. CLEAN AND REPAIR DRAINAGE SCUPPER FROM EB CONGRESS PARKWAY.
3. CONSTRUCT PROPOSED BARRIER WALL, GUARDRAIL AND CURB AND GUTTER AS SHOWN ON THE PLANS.
4. RE-GRADE AREA BY DES PLAINES STREET AND INSTALL HARDSCAPE ELEMENTS.

FILE NAME = 24.D60P67-shr-staging-typical.dgn

USER NAME = USER3690	DESIGNED - DLD	REVISED -
	DRAWN - ED	REVISED -
PLOT SCALE = 1:5	CHECKED - AAC	REVISED -
PLOT DATE = 9/8/2011	DATE - 08/04/11	REVISED -

STATE OF ILLINOIS
DEPARTMENT OF TRANSPORTATION

SUGGESTED MAINTENANCE OF TRAFFIC TYPICAL SECTIONS

SCALE: NONE SHEET NO. 1 OF 1 SHEETS STA. TO STA.

F.A.I. RTE. 60794/7290	SECTION 2011-055-I	COUNTY COOK	TOTAL SHEETS 107	SHEET NO. 25
				CONTRACT NO. 60P67
ILLINOIS FED. AID PROJECT				