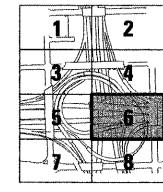
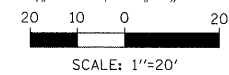


PROP CURVE EN_RMP.BL-5
 PI STA = 1134+32.05
 $\Delta = 47^\circ 49' 39''$ (LT)
 $D = 17^\circ 00' 22''$
 $R = 336.91'$
 $T = 149.40'$
 $L = 281.24'$
 $E = 31.64'$
 $e = \text{---}$
 $T.R. = \text{---}$
 $S.E. RUN = \text{---}$
 $P.C. STA = 1132+82.65$
 $P.T. STA = 1135+63.89$

PROP CURVE EN_RMP.BL-4
 PI STA = 1131+62.91
 $\Delta = 53^\circ 02' 19''$ (LT)
 $D = 20^\circ 25' 01''$
 $R = 280.63'$
 $T = 140.03'$
 $L = 259.78'$
 $E = 33.00'$
 $e = \text{---}$
 $T.R. = \text{---}$
 $S.E. RUN = \text{---}$
 $P.C. STA = 1130+22.87$
 $P.T. STA = 1132+82.65$



KEY MAP

FILE NAME = 21.D60P67-sh1-plan06.dgn	USER NAME = USER:3690	DESIGNED - DLD	REVISED -
		DRAWN - ED	REVISED -
		CHECKED - AAC	REVISED -
		DATE - 08/04/11	REVISED -
PLOT SCALE = 1:20			
PLOT DATE = 9/8/2011			

STATE OF ILLINOIS
 DEPARTMENT OF TRANSPORTATION

PROPOSED ROADWAY PLAN

SCALE: 1"=20' SHEET NO. 6 OF 8 SHEETS STA. TO STA.

F.A.I. RTE. 90/94 7290	SECTION 2011-055-I	COUNTY COOK	TOTAL SHEETS 10	SHEET NO. 22
				CONTRACT NO. 60P67
ILLINOIS FED. AID PROJECT				