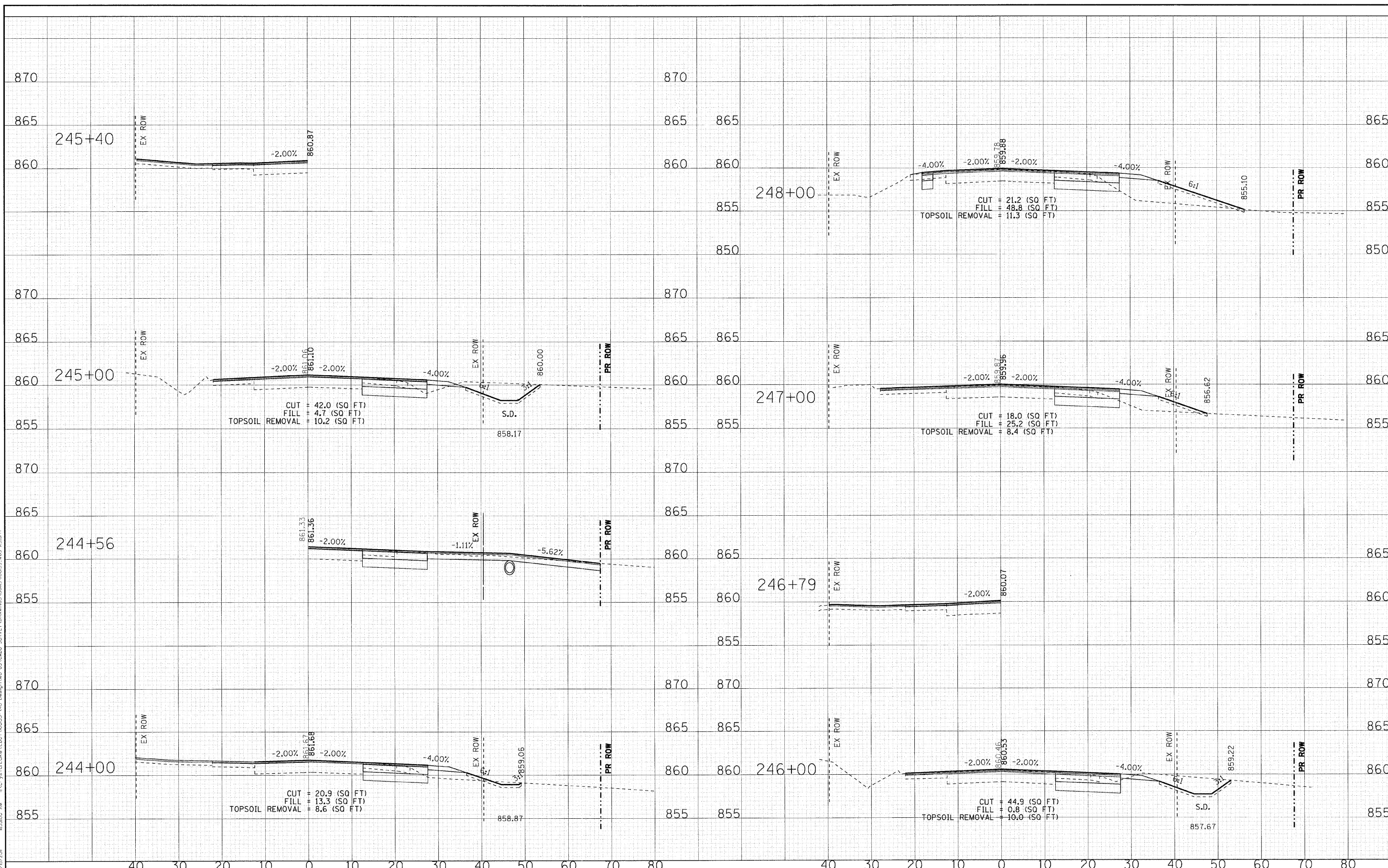


COPYRIGHT © 2010 BY BAYTER & WOODMAN, INC.
 ALL RIGHTS RESERVED.
 PROJECT NO. 104-0025 - EXPRES 7/30/2011
 I:\C-yr\TollLake\LDOT\0095\1-VO-Design\WD-05-CADD-SURVEY\DRAWINGS\DRMS\ID005\105-XS.dwg
 8/31/2011 10:55:00 AM



DESIGNED -	DJS	REVISED -	1-28-11 PER IDOT REVIEW
DRAWN -	CJC	REVISED -	3-14-11 PER IDOT REVIEW
CHECKED -	LDH	REVISED -	
DATE -	09/10/10	REVISED -	

STATE OF ILLINOIS
DEPARTMENT OF TRANSPORTATION

IL ROUTE 31 - AMES ROAD TO EDGEWOOD ROAD
CROSS SECTIONS
 SCALE: H: 1"=10' V: 1"=5'
 STA. 244+00 TO STA. 248+00

F.A. RTE.	SECTION	COUNTY	TOTAL SHEETS	SHEET NO.
336	2010-049-N		50	48
FED. ROAD DIST. NO. 1 ILLINOIS FED. AID PROJECT			CONTRACT NO. 60L25	