

COPYRIGHT © 2010 BY BAXTER & WOODMAN, INC.  
 ALL RIGHTS RESERVED. EXPIRES 4/30/2011  
 LICENSE NO. 084-00221-EXPRES 4/30/2011  
 7/16/2011 10:53:47 AM



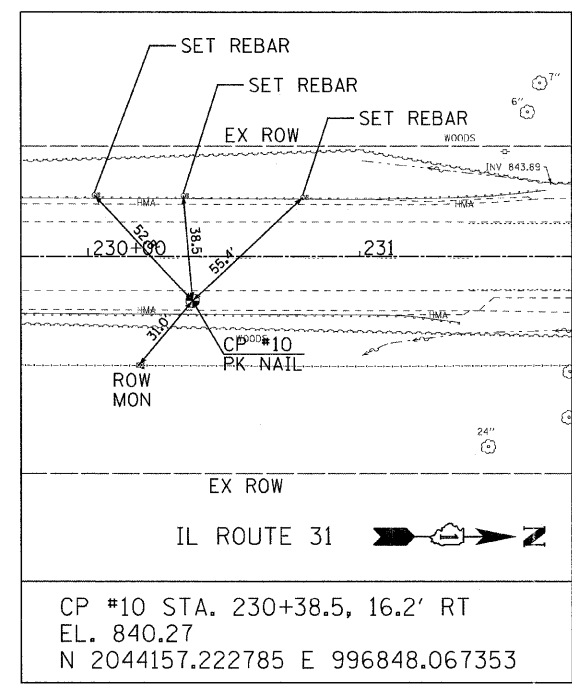
DESIGNED -	DJS	REVISED -	1-28-11 PER IDOT REVIEW
DRAWN -	CJC	REVISED -	
CHECKED -	LDH	REVISED -	
DATE -	09/10/10	FILE -	100153-W05-Align & Ties.sht

**STATE OF ILLINOIS**  
**DEPARTMENT OF TRANSPORTATION**

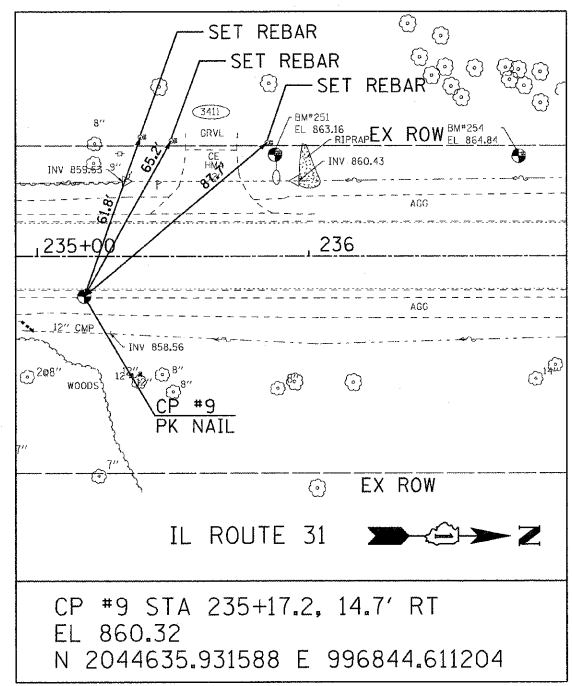
**IL ROUTE 31 - AMES ROAD TO EDGEWOOD ROAD**  
**ALIGNMENT AND TIES**

SCALE: \_\_\_\_\_ STA. \_\_\_\_\_ TO STA. \_\_\_\_\_

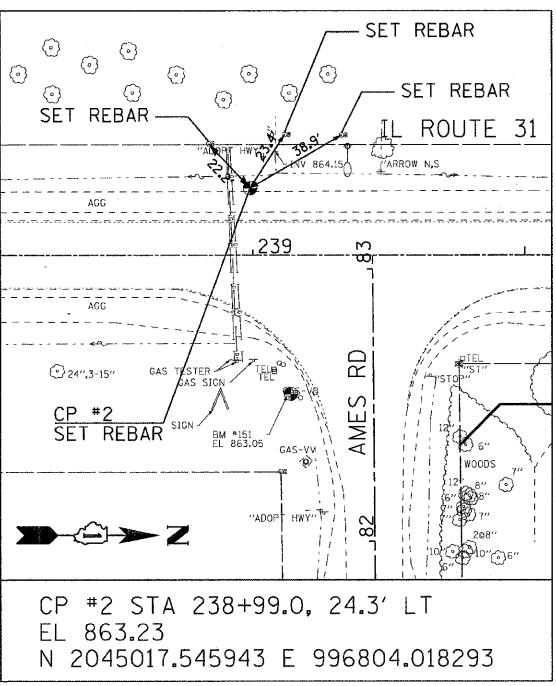
F.A.P. RTE.	SECTION	COUNTY	TOTAL SHEETS	SHEET NO.
336	2010-049-N	MCHENRY	50	10
FED. ROAD DIST. NO. 1 ILLINOIS			CONTRACT NO. 60L25	



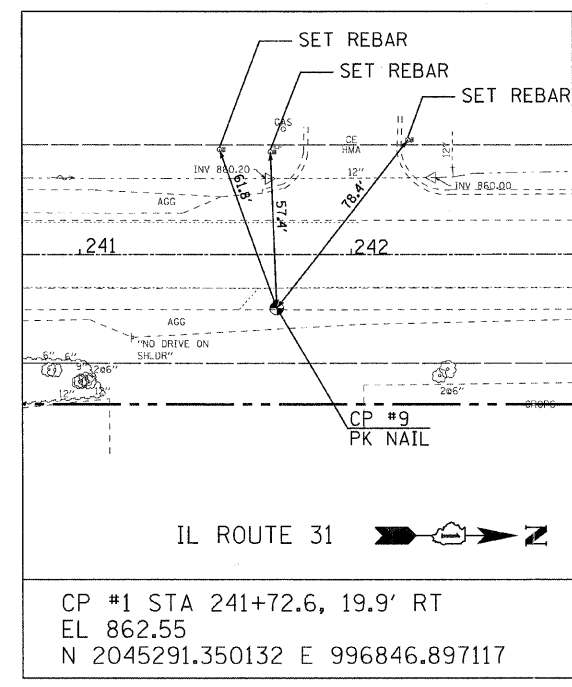
CP #10 STA. 230+38.5, 16.2' RT  
 EL. 840.27  
 N 2044157.222785 E 996848.067353



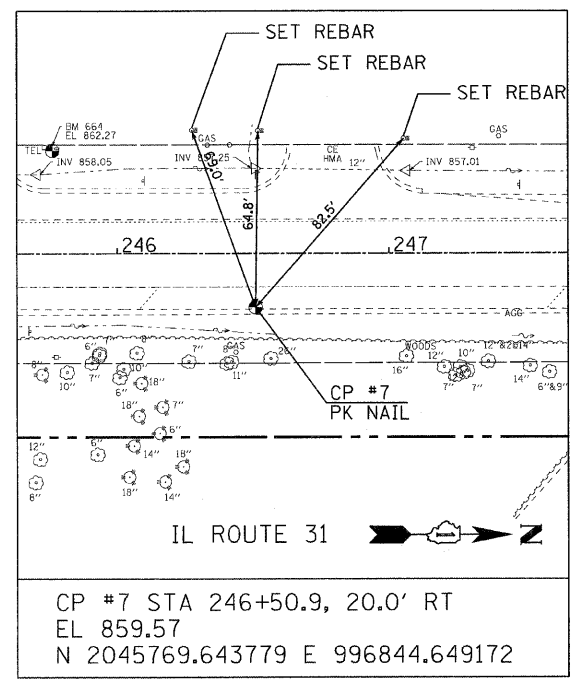
CP #9 STA 235+17.2, 14.7' RT  
 EL 860.32  
 N 2044635.931588 E 996844.611204



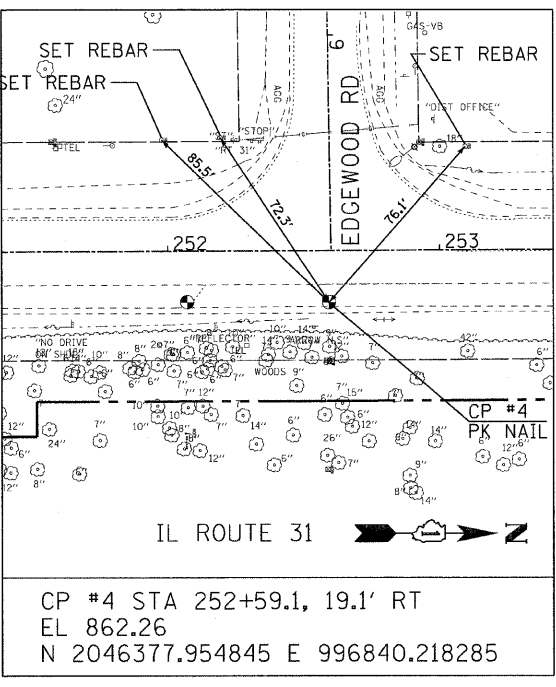
CP #2 STA 238+99.0, 24.3' LT  
 EL 863.23  
 N 2045017.545943 E 996804.018293



CP #1 STA 241+72.6, 19.9' RT  
 EL 862.55  
 N 2045291.350132 E 996846.897117



CP #7 STA 246+50.9, 20.0' RT  
 EL 859.57  
 N 2045769.643779 E 996844.649172



CP #4 STA 252+59.1, 19.1' RT  
 EL 862.26  
 N 2046377.954845 E 996840.218285