

CONTROL POINTS

CP#1	N 2045291.350132	E 996846.897117	ELEV = 862.55	STA = 241+72.6,	19.9' RT
CP#2	N 2045017.545943	E 996804.018293	ELEV = 863.23	STA = 238+99.0,	24.3' LT
CP#3	N 2046954.965538	E 996831.040548	ELEV = 852.93	STA = 258+26.2,	15.2' RT
CP#4	N 2046377.954845	E 996840.218285	ELEV = 862.26	STA = 252+59.1,	19.1' RT
CP#7	N 2045769.643779	E 996844.649172	ELEV = 859.57	STA = 246+50.9,	20.0' RT
CP#9	N 2044635.931588	E 996844.611204	ELEV = 860.32	STA = 235+17.2,	14.7' RT
CP#10	N 2044157.222785	E 996848.067353	ELEV = 840.27	STA = 230+38.5,	16.2' RT
CP#18	N 2045890.049478	E 996842.598839	ELEV = 859.21	STA = 247+71.3,	18.5' RT
CP#19	N 2046017.494293	E 996842.802181	ELEV = 859.99	STA = 248+98.7,	19.4' RT
CP#20	N 2046113.526009	E 996841.920833	ELEV = 861.02	STA = 249+94.8,	19.0' RT
CP#21	N 2046215.923393	E 996841.087712	ELEV = 862.13	STA = 250+97.1,	18.8' RT
CP#22	N 2046325.846503	E 996840.363227	ELEV = 862.46	STA = 252+07.1,	18.9' RT

BENCHMARK LIST

B.M. #151 SPLINE IN POWER POLE AT SE CORNER OF AMES ROAD AND IL ROUTE 31 ELEV = 863.05	B.M. #619 IN EAST FACE OF POWER POLE ON WEST SIDE OF IL ROUTE 31 NORTH OF BUSINESS 3005 ELEV = 863.43
B.M. #251 IN POWER POLE ON WEST SIDE OF IL ROUTE 31 AT BUSINESS 3411 ELEV = 863.16	B.M. #664 IN EAST FACE OF POWER POLE ON WEST SIDE OF IL ROUTE 31 AT BUSINESS 3209 ELEV = 862.27
B.M. #254 IN POWER POLE ON WEST SIDE OF IL ROUTE 31 100' NORTH OF BUSINESS 3411 ELEV = 864.64	B.M. #900 IN EAST FACE OF POWER POLE ON WEST SIDE OF IL ROUTE 31 SOUTH OF BUSINESS 3109 ELEV = 861.51
B.M. #584 SPLINE IN WEST FACE OF POWER POLE ON WEST SIDE OF IL ROUTE 31 SOUTH OF BUSINESS 3305 ELEV = 862.86	

Chain X31 contains:
Beginning chain X31 description

N	2,044,118.68	E	996,832.04	Sta	230+00.00
N	2,045,028.32	E	996,828.32	Sta	239+09.65
N	2,046,136.06	E	996,822.85	Sta	250+17.41
N	2,046,376.36	E	996,821.14	Sta	252+57.11
N	2,047,120.68	E	996,814.29	Sta	260+02.06

Ending chain X31 description

Chain AMES contains:
Beginning chain AMES description

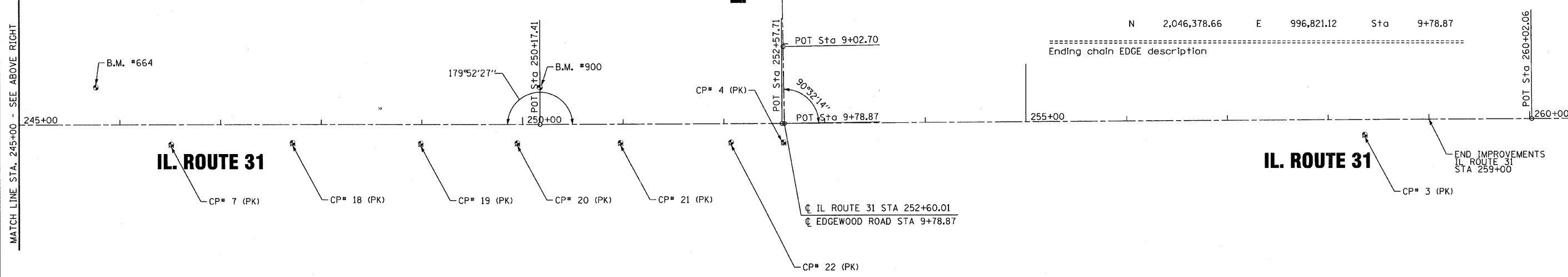
N	2,045,065.57	E	997,083.11	Sta	80+50.00
N	2,045,063.84	E	996,933.12	Sta	82+00.00
N	2,045,062.67	E	996,828.15	Sta	83+04.98

Ending chain AMES description

Chain EDGE contains:
Beginning chain EDGE description

N	2,046,374.41	E	996,592.29	Sta	7+50.00
N	2,046,377.25	E	996,744.97	Sta	9+02.70
N	2,046,378.66	E	996,821.12	Sta	9+78.87

Ending chain EDGE description



COPYRIGHT © 2010 BY BAXTER & WOODMAN, INC.
 A PROFESSIONAL ENGINEERING FIRM
 4750 N. WOODLAND AVENUE, SUITE 200
 CHICAGO, ILLINOIS 60630
 TEL: 773.226.8400
 FAX: 773.226.8401
 WWW.BAXTERWOODMAN.COM

	DESIGNED - DJS	REVISED -1-28-11 PER IDOT REVIEW	STATE OF ILLINOIS DEPARTMENT OF TRANSPORTATION		IL ROUTE 31 - AMES ROAD TO EDGEWOOD ROAD ALIGNMENT AND TIES		F.A.P. RTE. 336	SECTION 2010-049-N	COUNTY MCHENRY	TOTAL SHEETS 50	SHEET NO. 9
	DRAWN - CJC	REVISIONS			SCALE: 1"=50'	STA. TO STA.	FED. ROAD DIST. NO. 1 ILLINOIS		CONTRACT NO. 60L25		
CHECKED - LDH	FILE - 100153-W05-Align & Ties.shp										
DATE - 09/10/10											

MATCH LINE STA. 245+00 - SEE BELOW LEFT

POT Sta 260+02.06