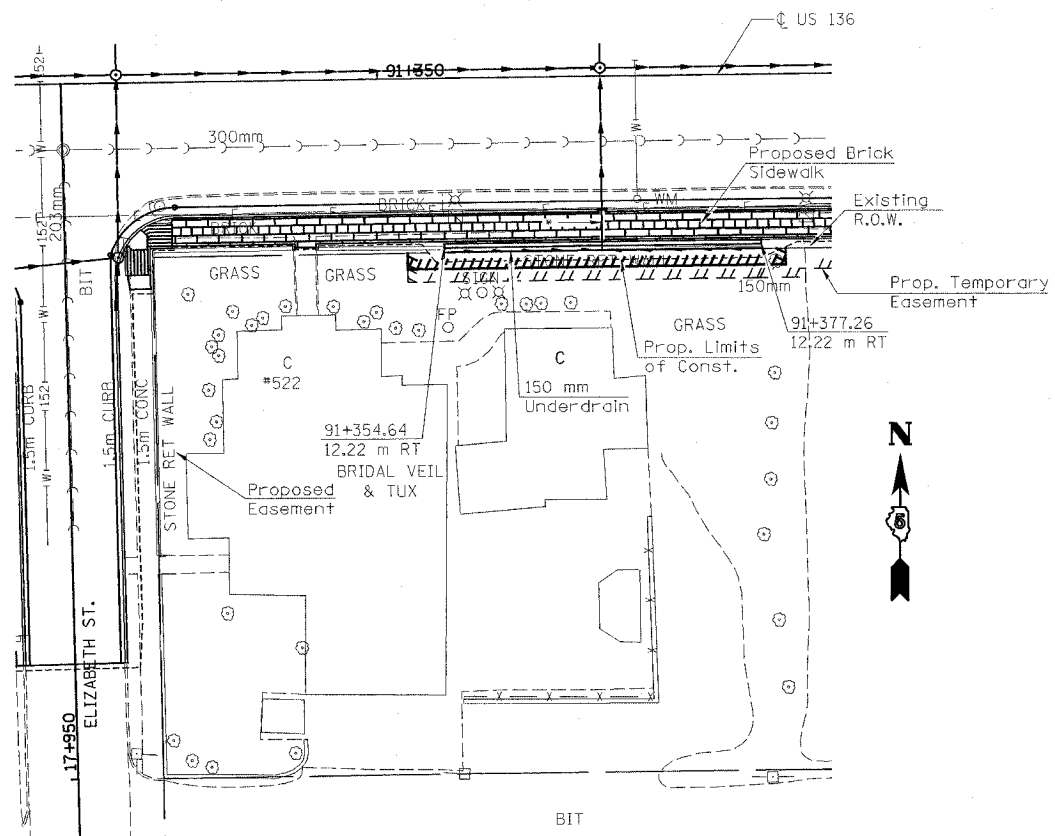
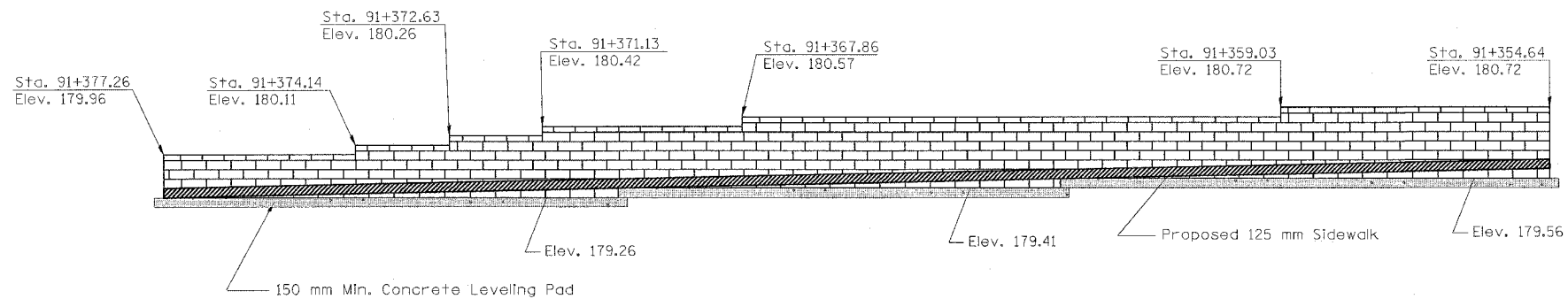


F.A.P. RTE.	SECTION	COUNTY	TOTAL SHEETS	SHEET NO.
729	342-4	VERMILION	285	125
STA. 17+965.96		TO STA. 91+377.27		
FED. ROAD DIST. NO.		ILLINOIS FED. AID PROJECT		



PLAN
SCALE: 1:250

* Connect 150 mm Pipe Underdrain (Special) to Proposed Inlet at Sta. 91+366 RT.



ELEVATION
SCALE: 1:50
(Looking From C US 136)

NOTES

- Offsets Refer to the Distance from C Roadway to the Back Face of the Lowest Block of the Retaining Wall at the Given Station.
- Refer to Sheet for Typical Cross-Section of the Block Retaining Wall.

REVISIONS	
NAME	DATE

ILLINOIS DEPARTMENT OF TRANSPORTATION
BLOCK RETAINING WALL DETAILS
U.S. ROUTE 136
 SCALE --- DRAWN BY MTH
 DATE 5/03 CHECKED BY KRG