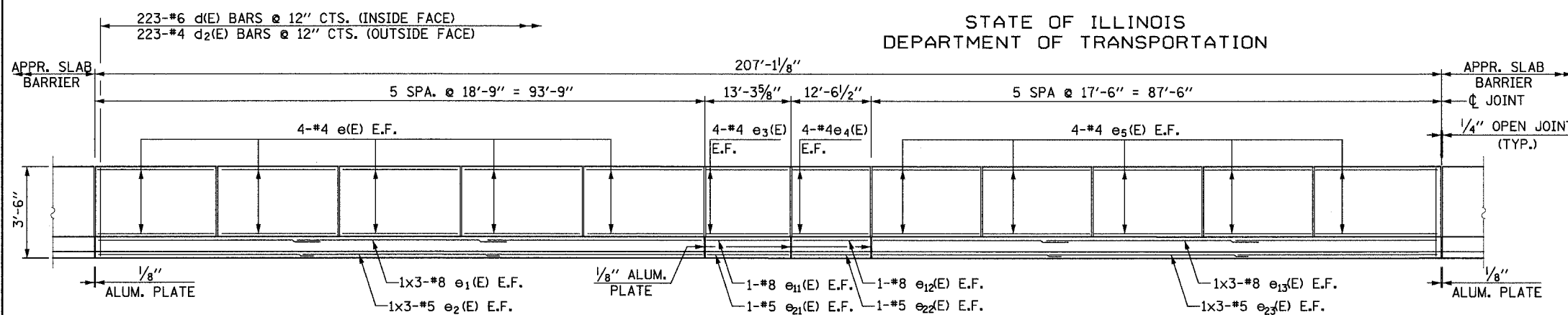
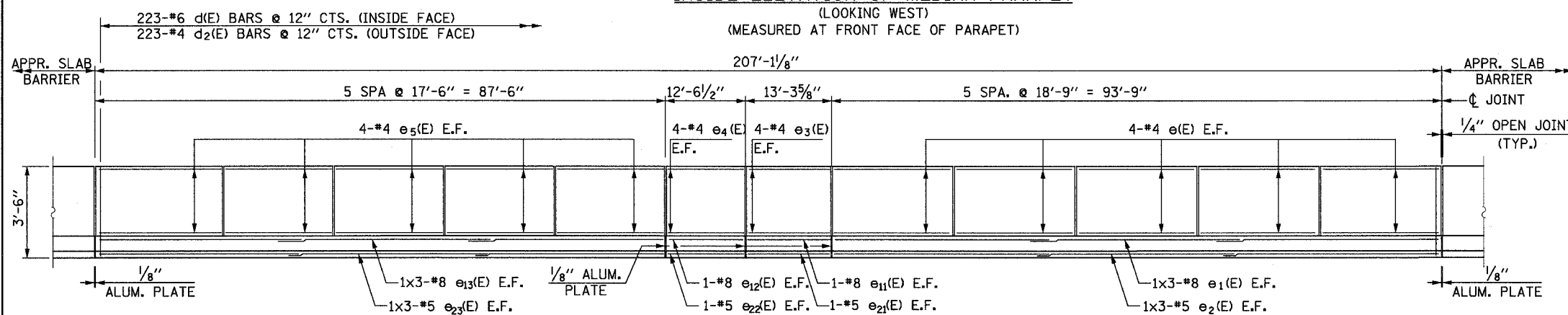


STATE OF ILLINOIS  
DEPARTMENT OF TRANSPORTATION

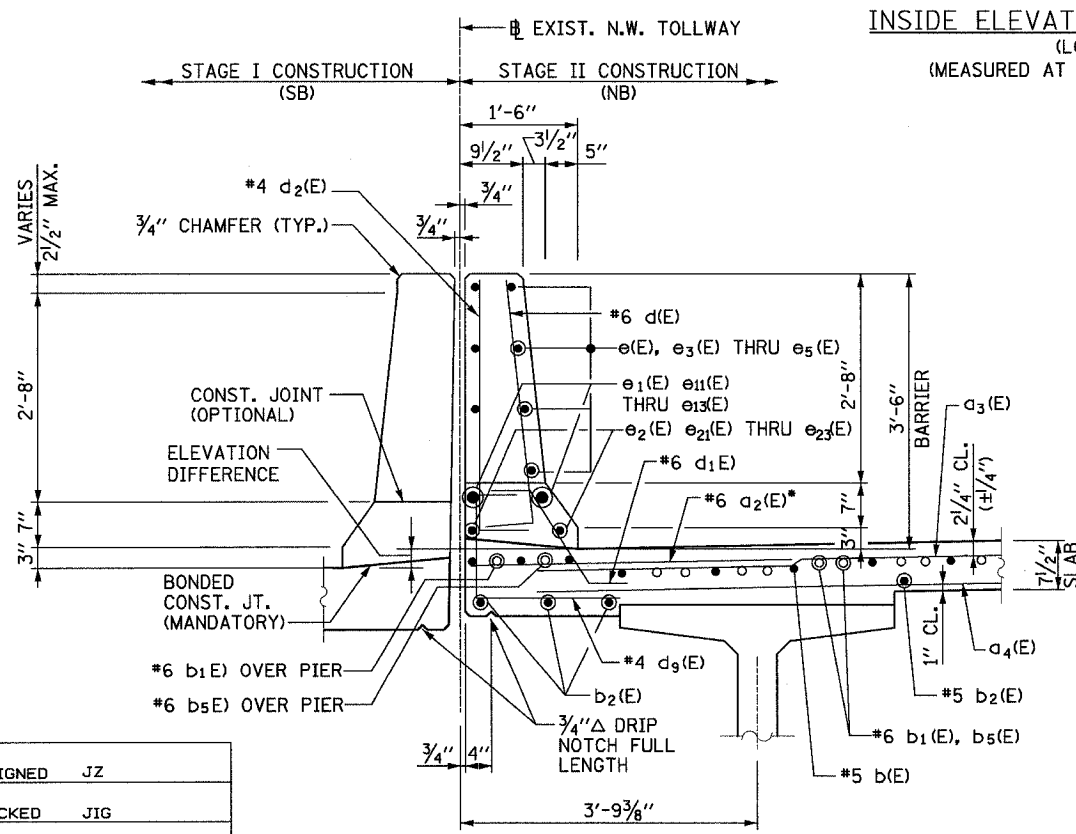
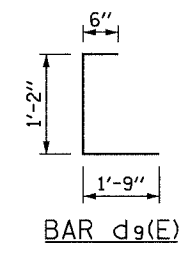
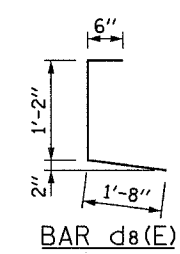
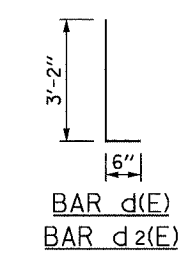
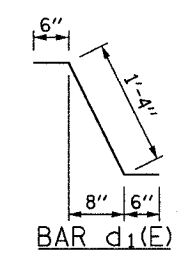
ROUTE NO.	SECTION	COUNTY	SHEET	SHEET NO.
303	129K	WINNEBAGO	585	208
CONTRACT NO. 64594				OF SHEETS S47



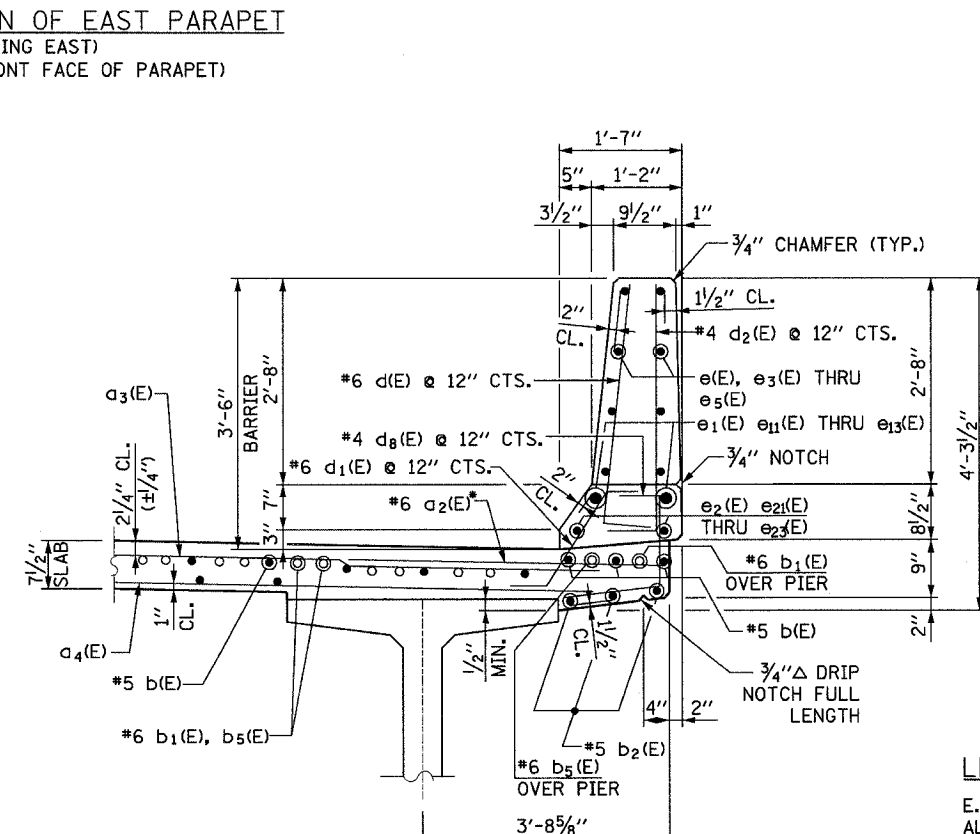
INSIDE ELEVATION OF MEDIAN PARAPET  
(LOOKING WEST)  
(MEASURED AT FRONT FACE OF PARAPET)



INSIDE ELEVATION OF EAST PARAPET  
(LOOKING EAST)  
(MEASURED AT FRONT FACE OF PARAPET)



SECTION THRU MEDIAN PARAPET  
(LOOKING NORTH)



SECTION THRU EAST PARAPET  
(LOOKING NORTH)

DESIGNED	JZ
CHECKED	JIG
DRAWN	DCP
CHECKED	JIG

\* LAP WITH ALTERNATE  
a3(E) BARS

LEGEND

E.F. - EACH FACE  
ALUM. - ALUMINUM



REINFORCING BAR SCHEDULE				
BAR	NO.	SIZE	LENGTH	SHAPE
a2(E)	356	#6	6'-6"	—
a3(E)	768	#5	32'-11"	—
a4(E)	834	#5	22'-8"	—
b(E)	476	#5	30'-8"	—
b1(E)	63	#6	57'-0"	—
b2(E)	440	#5	27'-0"	—
b3(E)	130	#6	6'-0"	—
b4(E)	70	#6	6'-6"	—
b5(E)	63	#6	51'-3"	—
d(E)	446	#6	3'-8"	—
d1(E)	446	#6	2'-4"	—
d2(E)	446	#4	3'-8"	—
d8(E)	223	#4	3'-4"	—
d9(E)	223	#4	3'-5"	—
e(E)	80	#4	18'-6"	—
e1(E)	12	#8	34'-3"	—
e2(E)	12	#5	32'-9"	—
e3(E)	16	#4	13'-1"	—
e4(E)	16	#4	12'-4"	—
e5(E)	80	#4	17'-3"	—
e11(E)	4	#8	13'-1"	—
e12(E)	4	#8	12'-4"	—
e13(E)	12	#8	32'-3"	—
e21(E)	4	#5	13'-1"	—
e22(E)	4	#5	12'-4"	—
e23(E)	12	#5	30'-8"	—
m(E)	114	#6	6'-2"	—
m2(E)	28	#6	5'-10"	—
m3(E)	6	#8	6'-4"	—
m4(E)	2	#8	4'-4"	—
m6(E)	168	#6	7'-7"	—
m8(E)	14	#6	7'-11"	—
m10(E)	20	#6	33'-9"	—
m12(E)	6	#6	5'-11"	—
s20(E)	78	#4	12'-11"	—
s21(E)	28	#4	12'-0"	—
s22(E)	35	#4	15'-0"	—
u20(E)	10	#6	5'-2"	—
u21(E)	10	#6	5'-6"	—
v20(E)	128	#5	5'-0"	—
v21(E)	124	#5	6'-0"	—

BILL OF MATERIAL

PAY ITEM NUMBER	DESCRIPTION	UNIT	QUANTITY
50800205	Reinforcement Bars, Epoxy Coated	Pound	108,300
X0323397	High Performance Concrete Superstructure	Cu. Yds.	469.2
50300300	Protective Coat	Cu. Yds.	1,404
50300260	Bridge Deck Grooving	Sq. Yds.	1,358
50300300	Protective Coat (Special)	Cu. Yds.	203

NOTES:

- REINFORCEMENT BARS DESIGNATED (E) SHALL BE EPOXY COATED.
- FOR b, m, s, u, & v BAR DETAILS, SEE SHEET S25.

SUPERSTRUCTURE DETAILS (NB)  
N.W. TOLLWAY  
OVER IL 173 (F.A.P. ROUTE 303)  
SECTION 129K  
WINNEBAGO COUNTY  
STATION 443+73.62  
S.N. 101-9963 (SB) & 101-9964 (NB)  
TOLLWAY S.N. 703 (NB) & 704 (SB)