

11-17-2023 LETTING ITEM 019

# STATE OF ILLINOIS DEPARTMENT OF TRANSPORTATION PLANS FOR PROPOSED FEDERAL AID HIGHWAY

F.A.P. RTE 0360 (FARNSWORTH AVE)  
MARSHALL BLVD AND IL PRAIRIE PATH  
INTERSECTION IMPROVEMENTS  
SECTION NO.: 19-00331-00-SP  
PROJECT NO.: FK15(761)  
CITY OF AURORA  
KANE COUNTY

F.A.P. RTE.	SECTION	COUNTY	TOTAL SHEETS	SHEET NO.
0360	19-00331-00-SP	KANE	21	1
FED. ROAD DIST. NO. 1 ILLINOIS FED. AID PROJECT			CONTRACT NO. 61J92	



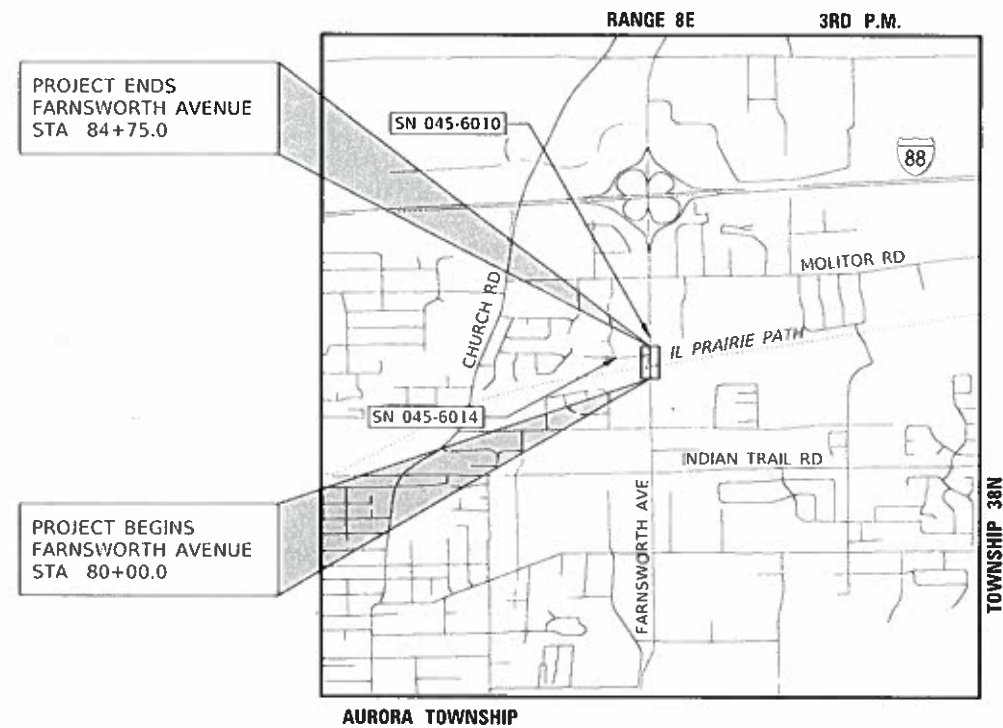
FOR INDEX OF SHEETS AND LIST OF HIGHWAY STANDARDS, SEE SHEET NO. 2

**FARNSWORTH AVE**  
DESIGN DESIGNATION = OTHER PRINCIPAL ARTERIAL/  
STRATEGIC REGIONAL ARTERIAL

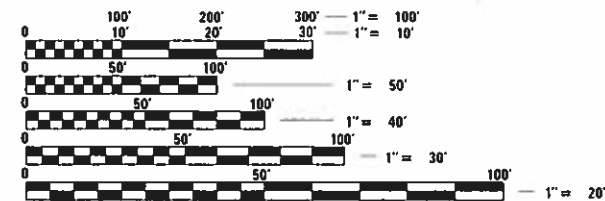
POSTED SPEED = 35 MPH  
2018 ADT = 24,000 VPD

**MARSHALL BLVD**  
DESIGN DESIGNATION = LOCAL ROAD  
POSTED SPEED = 25 MPH  
2018 ADT = 875 VPD

C-91-164-20



**PROJECT LOCATION**  
NOT TO SCALE



FULL SIZE PLANS HAVE BEEN PREPARED USING STANDARD ENGINEERING SCALES. REDUCED SIZED PLANS WILL NOT CONFORM TO STANDARD SCALES. IN MAKING MEASUREMENTS ON REDUCED PLANS, THE ABOVE SCALES MAY BE USED.

J.U.L.I.E.  
JOINT UTILITY LOCATION INFORMATION FOR EXCAVATION  
1-800-892-0123  
OR 811

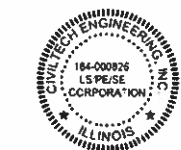
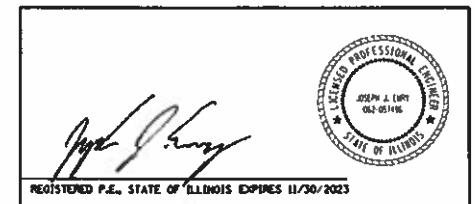
**PROJECT LENGTH:**  
FARNSWORTH AVENUE GROSS & NET LENGTH - 475.00 FT (0.090 MILES)

STATE OF ILLINOIS  
DEPARTMENT OF TRANSPORTATION

Approved: August 7, 2023  
*Amel W. Weese*  
Regional Engineering Commissioner

Passed: SEPTEMBER 7, 2023  
*C. P. Pappas*  
District One Engineer of Local Roads & Streets

Releasing for Bid Based on Limited Review: SEPTEMBER 7, 2026  
*Jose Luis Lopez*  
Regional Engineer



PLANS PREPARED BY:  
**CIVILTECH**  
Two Pierce Place, Suite 1400 - Itasca, Illinois 60143  
Tel: 630.773.3900 - Fax: 630.773.3975  
www.civiltechinc.com

FEDERAL AID PROGRAM ENGINEER: CARMEN E. RAMOS, P.E., SCHAUMBURG, IL

CONTRACT NO.: 61J92

PRINTED BY THE AUTHORITY OF THE STATE OF ILLINOIS

**INDEX OF SHEETS**

1	COVER SHEET
2 - 3	GENERAL NOTES AND STANDARDS
4 - 7	SUMMARY OF QUANTITIES
8	ALIGNMENT, TIES AND BENCHMARKS
9	ROADWAY PLANS
10 - 12	ADA CURB RAMP DETAILS
13	PAVEMENT MARKING, SIGNING, AND LANDSCAPE RESTORATION PLAN
14	CONSTRUCTION STANDARDS
15 - 21	DISTRICT ONE HIGHWAY STANDARDS

**IDOT HIGHWAY STANDARDS**

000001-08	STANDARD SYMBOLS, ABBREVIATIONS AND PATTERNS
280001-07	TEMPORARY EROSION CONTROL SYSTEMS
424001-11	PERPENDICULAR CURB RAMPS FOR SIDEWALKS
424016-05	MID-BLOCK CURB RAMPS FOR SIDEWALKS
424031-02	MEDIAN PEDESTRIAN CROSSINGS
442201-03	CLASS C AND D PATCHES
606001-08	CONCRETE CURB TYPE B AND COMBINATION CONCRETE CURB AND GUTTER
606301-04	PC CONCRETE ISLANDS AND MEDIANS
701001-02	OFF-RD OPERATIONS, 2L, 2W, MORE THAN 15' AWAY
701006-05	OFF-RD OPERATIONS, 2L, 2W, 15' TO 24" AWAY FROM PAVEMENT EDGE
701101-05	OFF-RD OPERATIONS, MULTILANE, 15' (4.5 m) TO 24" (600 mm) FROM PAVEMENT EDGE
701301-04	LANE CLOSURE, 2L, 2W, SHORT TIME OPERATIONS
701311-03	LANE CLOSURE 2L, 2W, MOVING OPERATIONS - DAY ONLY
701427-05	LANE CLOSURE, MULTILANE, INTERMITTENT OR MOVING OPER., FOR SPEEDS ≤ 40 MPH
701602-10	URBAN LANE CLOSURE, MULTILANE, 2W WITH BIDIRECTIONAL LEFT TURN LANE
701606-10	URBAN SINGLE LANE CLOSURE, MULTILANE, 2W WITH MOUNTABLE MEDIAN
701701-10	URBAN LANE CLOSURE, MULTILANE INTERSECTION
701801-06	SIDEWALK, CORNER OR CROSSWALK CLOSURE
701901-08	TRAFFIC CONTROL DEVICES
720001-01	SIGN PANEL MOUNTING DETAILS
720006-04	SIGN PANEL ERECTION DETAILS
728001-01	TELESCOPING STEEL SIGN SUPPORT
731001-01	BASE FOR TELESCOPING STEEL SIGN SUPPORT
780001-05	TYPICAL PAVEMENT MARKINGS

**IDOT DISTRICT ONE STANDARDS**

BD-08	DETAILS FOR FRAMES AND LIDS ADJUSTMENT WITH MILLING
BD-22	PAVEMENT PATCHING FOR HMA SURFACED PAVEMENT
BD-32	BUTT JOINT AND HMA TAPER DETAILS
TC-10	TRAFFIC CONTROL AND PROTECTION FOR SIDE ROADS, INTERSECTIONS, AND DRIVEWAYS
TC-13	DISTRICT ONE TYPICAL PAVEMENT MARKINGS
TC-16	SHORT TERM PAVEMENT MARKING LETTERS AND SYMBOLS
TC-22	ARTERIAL ROAD INFORMATION SIGN

**GENERAL NOTES**

1. THE CONTRACTOR SHALL NOTIFY THE ENGINEER 72 HOURS PRIOR TO THE COMMENCEMENT OF WORK AND SHALL COORDINATE ALL CONSTRUCTION OPERATIONS WITH THE ENGINEER.
2. NO WORK SHALL COMMENCE UNTIL TRAFFIC CONTROL REQUIREMENTS AND EROSION CONTROL DEVICES ARE MET TO THE SATISFACTION OF THE ENGINEER.
3. PROPOSED LINES AND GRADES SHOWN ON THE CONSTRUCTION PLANS REPRESENT FINISHED GRADE ELEVATIONS, UNLESS OTHERWISE NOTED.
4. ALL DIMENSIONS, INCLUDING RADII, ARE GIVEN TO THE EDGE OF PAVEMENT UNLESS OTHERWISE NOTED. IT SHALL BE THE CONTRACTOR'S RESPONSIBILITY TO VERIFY ALL DIMENSIONS AND CONDITIONS EXISTING IN THE FIELD PRIOR TO ORDERING MATERIALS AND BEGINNING CONSTRUCTION.
5. WHEN REMOVING CURB AND GUTTER, PAVEMENT OR ANY OTHER STRUCTURE, THE CONTRACTOR SHALL TAKE THE PRECAUTIONS NECESSARY TO AVOID DAMAGE TO UNDERGROUND PUBLIC OR PRIVATE UTILITIES. UNDER NO CIRCUMSTANCES WILL THE USE OF A FROST BALL CONCRETE BREAKER BE ALLOWED.
6. CURB AND GUTTER JOINTS SHALL BE PLACED AS PER STANDARD 606001 AND IN ADDITION ONE INCH EXPANSION JOINTS SHALL BE PLACED EVERY 75 FT. AT LEAST ONE EXPANSION JOINT SHALL BE PLACED IN EACH SEGMENT OF CURB REMOVAL AND REPLACEMENT.
7. CONCRETE TRUCK WASHOUT FACILITY SHOULD BE PROVIDED IN ACCORDANCE WITH THE "STANDARD SPECIFICATIONS" AND SPECIAL PROVISIONS IN THE FIELD BY THE CONTRACTOR AT A LOCATION OR LOCATIONS APPROVED BY THE ENGINEER. WASHING CONCRETE AT CURB AND GUTTER IS STRICTLY PROHIBITED. NO CONCRETE WASHOUT PERMITTED AT ANY OPEN EXCAVATION, SUBJECT TO EROSION CONTROL DEFICIENCY ACCORDING TO ARTICLE 105.03.
8. THE CONTRACTOR SHALL REMOVE FROM THE PROJECT SITE ALL UNSUITABLE EXCAVATED MATERIAL. THIS MATERIAL WILL BE CLASSIFIED AS ALL MATERIAL THAT THE ENGINEER DEEMS UNSUITABLE, SUCH AS REBAR, ABANDONED WIRE, ETC. THE WASTE EXCAVATED MATERIAL SHALL NOT BE DEPOSITED ON PUBLIC OR PRIVATE PROPERTY UNLESS THE CONTRACTOR FIRST OBTAINS THE WRITTEN PERMISSION FROM THE PROPERTY OWNER OR THE AUTHORIZED REPRESENTATIVE OF THE APPROPRIATE PUBLIC AGENCY. PROVISIONS OF ARTICLE 202.03 STANDARD SPECIFICATIONS SHALL BE ADHERED TO. THE DISPOSAL AREA LOCATION SHALL BE DISCLOSED TO THE ENGINEER. ALL REMOVAL ITEMS, INCLUDING EARTH EXCAVATION, AND REMOVAL AND DISPOSAL OF UNSUITABLE MATERIALS SHALL BE REMOVED AT THE END OF THE DAY. THE CONTRACTOR MUST REQUEST IN WRITING A LOCATION FOR STORAGE OF SUITABLE EXCAVATED MATERIALS THAT WILL BE INCORPORATED INTO THE PROJECT.
9. THE THICKNESSES OF HMA MIXTURES SHOWN ON THE PLANS ARE NOMINAL. DEVIATIONS MAY OCCUR DUE TO IRREGULARITIES IN THE EXISTING SURFACE COURSE UPON WHICH THE HMA MATERIALS ARE PLACED.
10. THE CONTRACTOR SHALL LIMIT ALL DROP-OFFS BETWEEN LANES TO 2" DURING ALL OVERNIGHT PERIODS.
11. WHEN DIRECTED BY THE ENGINEER, SUPPLEMENTAL WATERING SHALL BE APPLIED TO ALL SEEDED/SODDED AREAS PRIOR TO FINAL ACCEPTANCE AT A RATE SPECIFIED BY THE ENGINEER AND IN ACCORDANCE WITH THE "STANDARD SPECIFICATIONS" AND SPECIAL PROVISIONS.
12. WHERE SECTION OR SUBSECTION MONUMENTS ARE ENCOUNTERED, THE ENGINEER SHALL BE NOTIFIED BEFORE SUCH MONUMENTS ARE REMOVED. THE CONTRACTOR SHALL CAREFULLY PRESERVE ALL PROPERTY MARKERS AND MONUMENTS UNTIL THE OWNER, AN AUTHORIZED SURVEYOR, OR ANY AGENT HAS WITNESSED OR OTHERWISE REFERENCED EACH LOCATION.
13. THE CONTRACTOR SHALL NOT BE ALLOWED TO SET UP A YARD OR FIELD OFFICE ON CITY PROPERTY WITHOUT WRITTEN CONSENT FROM THE CITY.
14. THE CONTRACTOR SHALL CONTACT THE IDOT D1 TRAFFIC CONTROL SUPERVISOR AT KALPANA.KANNAN-HOSADURGA@ILLINOIS.GOV AT LEAST 72 HOURS IN ADVANCE OF BEGINNING WORK.
15. THE AGGREGATE GRADATION FOR THE AGGREGATE SUBGRADE IMPROVEMENT 12" LOWER LIFT SHALL BE CS 1 OR RR 1.

**STORM SEWERS, STRUCTURES AND UTILITIES**

16. BEFORE STARTING ANY EXCAVATION, THE CONTRACTOR SHALL CALL "JULIE" AT 1-800-892-0123 FOR FIELD LOCATIONS OF BURIED UTILITIES (48 HOURS NOTIFICATION IS REQUIRED).
17. THE CONTRACTOR SHALL COORDINATE CONSTRUCTION ACTIVITIES WITH UTILITY COMPANIES.
18. THE LOCATION OF PUBLIC OR PRIVATE UTILITIES SHOWN ON THE PLANS ARE APPROXIMATE AND THE ENGINEER DOES NOT GUARANTEE THEIR ACCURACY. THE CONTRACTOR WILL BE REQUIRED TO ASCERTAIN THE EXACT LOCATION OF SUCH UTILITIES AND EXERCISE CARE DURING HIS CONSTRUCTION OPERATIONS SO AS NOT TO DAMAGE THEM IN ACCORDANCE WITH THE SPECIAL PROVISIONS AND APPLICABLE ARTICLES INCLUDED IN THE "STANDARD SPECIFICATIONS" INCLUDING, BUT NOT LIMITED TO, ARTICLES 105.07 AND 107.39. THE CONTRACTOR SHALL BE RESPONSIBLE FOR CONTACTING THE OWNERS OF ALL EXISTING UTILITIES SO THAT THEIR FACILITIES MAY BE LOCATED AND ADJUSTED OR MOVED, IF NECESSARY, PRIOR TO THE START OF THE CONSTRUCTION OPERATIONS.
19. THE CONTRACTOR SHALL BE RESPONSIBLE FOR CONTACTING LOCAL AGENCIES MAINTAINING STORM & SANITARY SEWERS AND WATER MAINS TO VERIFY THE MATERIALS AND METHODS ALLOWED FOR THE ADJUSTMENT OR RELOCATION OF THEIR FACILITIES, IF NECESSARY.
20. ONLY PRECAST CONCRETE ADJUSTMENT RINGS, MAXIMUM OF 12" IN HEIGHT, WILL BE ALLOWED IN THE ADJUSTMENT OR RECONSTRUCTION OF CATCH BASIN, MANHOLE, INLET AND VALVE VAULT STRUCTURES, UNLESS INDICATED OTHERWISE ON THE PLANS OR AS DIRECTED BY THE ENGINEER. COMMON BRICK WILL NOT BE ALLOWED. ALL TYPE 8 GRATES ON RESTRICTED DEPTH DRAINAGE STRUCTURES SHALL BE ADJUSTED TO PLAN GRADE WITH 4" MINIMUM CONCRETE ADJUSTMENT RINGS.

**MAINTENANCE OF TRAFFIC**

21. THE CONTRACTOR SHALL BE REQUIRED TO PROVIDE ACCESS TO ABUTTING PROPERTY AT ALL TIMES DURING THE CONSTRUCTION OF THIS PROJECT.
22. A MINIMUM OF ONE LANE OF TRAFFIC IN EACH DIRECTION SHALL BE MAINTAINED AT ALL TIMES IN ACCORDANCE WITH THE APPLICABLE HIGHWAY STANDARDS.
23. THE CONTRACTOR SHALL COORDINATE WITH THE ENGINEER AND THE CITY TO REDUCE IMPACT TO MAJOR HOLIDAYS AND SPECIAL EVENTS. THE CONTRACTOR SHALL OBSERVE ALL LOCAL NOISE ORDINANCES UNLESS OTHERWISE APPROVED BY THE ENGINEER AND THE CITY.
24. DURING TRAFFIC OPERATIONS, THE CONTRACTOR SHALL TAKE NECESSARY PRECAUTIONS TO PROTECT ADJACENT TRAFFIC LANES THAT ARE OPEN TO TRAFFIC FROM DEBRIS GENERATED FROM THE CONSTRUCTION AREAS. THE CONTRACTOR WILL ALSO BE RESPONSIBLE FOR REMOVING DEBRIS FROM THE ADJACENT TRAVELED LANE SURFACE. STREET SWEEPING, AS SPECIFIED BY THE ENGINEER, SHALL BE CONSIDERED INCLUDED IN THE CONTRACT.

**SIGNING, STRIPING, AND LANDSCAPING**

25. THE ITEM 'SHORT TERM PAVEMENT MARKING' PROVIDES FOR THE APPLICATION OF TEMPORARY CENTER AND LANE LINES:
  - A) AFTER THE PAVEMENT HAS BEEN MILLED
  - B) AFTER PLACEMENT OF A TACK COAT
  - C) AFTER PLACEMENT OF BINDER COURSE
  - D) AFTER PLACEMENT OF A TACK COAT
  - E) AFTER PLACEMENT OF THE SURFACE COURSE
26. ITEMS UNDER THE GENERAL HEADING OF "THERMOPLASTIC PAVEMENT MARKING" PROVIDE FOR ONE APPLICATION.
27. PER THE ILLINOIS LAWN CARE PRODUCTS APPLICATION NOTICE ACT 096-1005, PHOSPHORUS FERTILIZER NUTRIENT SHALL NOT BE USED.

**COMMITMENTS**

- SIGNAGE NOTIFYING THE PUBLIC OF PLANNED PEDESTRIAN/CYCLIST DETOUR ROUTES SHALL BE POSTED AT THE PROJECT SITE AT LEAST TWO WEEKS PRIOR TO IMPLEMENTING PEDESTRIAN/CYCLIST DETOURS.

**CONTACTS**

**CITY OF AURORA  
PUBLIC WORKS/ENGINEERING**  
ALEX NUGENT, P.E.  
CITY ENGINEER  
77 S. BROADWAY  
AURORA, IL 60505  
(630) 256-3223  
nugenta@aurora.il.us

**COMCAST**  
MARTHA GIERAS  
688 INDUSTRIAL DRIVE  
ELMHURST, IL 60126  
(224) 229-5862  
martha\_gieras@comcast.com

**AURORA POLICE DEPARTMENT**  
1200 E INDIAN TRAIL  
AURORA, IL 60505  
(630) 256-5000

**COMMONWEALTH EDISON COMPANY**  
CASSIE EVANS  
SENIOR PROJECT MANAGER  
ONE LINCOLN CENTRE  
OAKBROOK TERRACE, IL 60181  
(630) 854-4399  
cassie.evans@ComEd.com

**AURORA FIRE DEPARTMENT**  
75 N BROADWAY  
AURORA, IL 60505  
(630) 256-4000

**LEVEL 3 COMMUNICATIONS (CENTURYLINK)**  
1305 E ALGONQUIN ROAD  
ARLINGTON HEIGHTS, IL 60005  
(877) 366-8344  
nationalrelo@centurylink.com

**ADESTA**  
AARON RYDELL  
565 WILLOWBROOK CENTRE PARKWAY  
WILLOWBROOK, IL 60527  
aaron.rydell@aus.com

**MCI**  
JOE CHANEY JR.  
(312) 617-2131  
joe.chaney@verizon.com

**ASTOUND**  
PAUL FLINKOW  
(630) 803-966  
paul.flinkow@astound.com

**METRO FIBERNET**  
(812) 213-1050  
811design@metronet.com

**ATT TRANSMISSION**  
VANESSA ROSS  
(217) 381-4284  
vf2021@att.com

**NICOR GAS**  
CHARLES PARROTT  
MANAGER, PLANNING AND LIAISON  
1844 FERRY ROAD  
NAPERVILLE, IL 60563  
(630) 388-3319  
cparrott@southernco.com

**AT&T DISTRIBUTION**  
LEGAL MANDATE ENGINEERING  
1000 COMMERCE DRIVE  
OAK BROOK, IL 60523  
g11629@att.com

**PACE BUS**  
RICHARD WILLMAN, P.E.  
TRANSPORTATION ENGINEER  
550 W ALGONQUIN ROAD  
ARLINGTON HEIGHTS, IL 60005  
(847) 228-3584  
richard.willman@pacebus.com

HOT-MIX ASPHALT MIXTURE REQUIREMENTS		
MIXTURE TYPE	AIR VOIDS @ Ndes	QUALITY MANAGEMENT PLAN (QMP)
<b>PAVEMENT RESURFACING</b>		
HOT-MIX ASPHALT SURFACE COURSE, MIX "D", IL-9.5, N70, 1-1/2"	4% @ 70 Gyr.	LR 1030-2
HOT-MIX ASPHALT BINDER COURSE, IL-9.5, N70, 1-1/2"	4% @ 70 Gyr.	LR 1030-2
<b>PAVEMENT PATCHING</b>		
CLASS D PATCHES (HMA BINDER IL-19 mm); 12"	4% @ 70 Gyr.	LR 1030-2
QMP DESIGNATION: QUALITY CONTROL/QUALITY ASSURANCE (QC/QA) PER LR 1030-2		

THE LONGITUDINAL JOINT SEALANT SHALL BE PLACED ON THE HMA BC, IL-9.5, N70. THE UNIT WEIGHT USED TO CALCULATE ALL HOT-MIX ASPHALT SURFACE MIXTURES IS 112 LB/SQ YD/ IN. THE "AC TYPE" FOR POLYMERIZED HMA MIXES SHALL BE "SBS/SBR PG 76-22" AND FOR NON-POLYMERIZED HMA THE "AC TYPE" SHALL BE "PG 64-22" UNLESS MODIFIED BY RECLAIMED MATERIALS SPECIFICATIONS.

**NOTE:**

- SIDEWALK AND CURB AND GUTTER REMOVAL AND REPLACEMENT LIMITS WILL BE DETERMINED BY THE FIELD ENGINEER. SEE PLANS FOR SUGGESTED SPOT REPAIRS.

CODE NUMBER	ITEM	UNIT	TOTAL QUANTITY	HSIP FUNDS 90% FEDERAL 10% LOCAL		100% LOCAL
				0005 ROADWAY	0021 SAFETY	NON- PARTICIPATING
20101000	TEMPORARY FENCE	FOOT	500	500		
20200100	EARTH EXCAVATION	CU YD	60	60		
20201200	REMOVAL AND DISPOSAL OF UNSUITABLE MATERIAL	CU YD	5	5		
21101615	TOPSOIL FURNISH AND PLACE, 4"	SQ YD	40	40		
25000400	NITROGEN FERTILIZER NUTRIENT	POUND	1	1		
25000600	POTASSIUM FERTILIZER NUTRIENT	POUND	1	1		
25200110	SODDING, SALT TOLERANT	SQ YD	40	40		
25200200	SUPPLEMENTAL WATERING	UNIT	2	2		
28000400	PERIMETER EROSION BARRIER	FOOT	71	71		
28000510	INLET FILTERS	EACH	4	4		
30300112	AGGREGATE SUBGRADE IMPROVEMENT 12"	SQ YD	167	167		
35101600	AGGREGATE BASE COURSE, TYPE B 4"	SQ YD	92	92		
35101800	AGGREGATE BASE COURSE, TYPE B 6"	SQ YD	17	17		
40600290	BITUMINOUS MATERIALS (TACK COAT)	POUND	1,905	1,905		
40600370	LONGITUDINAL JOINT SEALANT	FOOT	1,766	1,766		
40600400	MIXTURE FOR CRACKS, JOINTS, AND FLANGEWAYS	TON	3	3		
40600982	HOT-MIX ASPHALT SURFACE REMOVAL - BUTT JOINT	SQ YD	71	71		
40602985	HOT-MIX ASPHALT BINDER COURSE, IL-9.5, N70	TON	238	238		

^ DENOTES SPECIALTY ITEM

CODE NUMBER	ITEM	UNIT	TOTAL QUANTITY	HSIP FUNDS 90% FEDERAL 10% LOCAL		100% LOCAL
				0005 ROADWAY	0021 SAFETY	NON- PARTICIPATING
40604062	HOT-MIX ASPHALT SURFACE COURSE, IL-9.5, MIX "D", N70	TON	238	238		
42001300	PROTECTIVE COAT	SQ YD	283	283		
42400200	PORTLAND CEMENT CONCRETE SIDEWALK 5 INCH	SQ FT	737	737		
42400800	DETECTABLE WARNINGS	SQ FT	101	101		
44000100	PAVEMENT REMOVAL	SQ YD	167	167		
44000161	HOT-MIX ASPHALT SURFACE REMOVAL, 3"	SQ YD	2,823	2,823		
44000500	COMBINATION CURB AND GUTTER REMOVAL	FOOT	60	60		
44000600	SIDEWALK REMOVAL	SQ FT	485	485		
44201785	CLASS D PATCHES, TYPE I, 12 INCH	SQ YD	29	29		
44201789	CLASS D PATCHES, TYPE II, 12 INCH	SQ YD	57	57		
44201794	CLASS D PATCHES, TYPE III, 12 INCH	SQ YD	85	85		
44201796	CLASS D PATCHES, TYPE IV, 12 INCH	SQ YD	113	113		
60603800	COMBINATION CONCRETE CURB AND GUTTER , TYPE B-6.12	FOOT	60	60		
60619200	CONCRETE MEDIAN, TYPE SB-6.06	SQ FT	1,501	1,501		
^ 66900200	NON-SPECIAL WASTE DISPOSAL	CU YD	67	67		
^ 66900530	SOIL DISPOSAL ANALYSIS	EACH	4	4		
^ 66901001	REGULATED SUBSTANCES PRE-CONSTRUCTION PLAN	LSUM	1	1		
^ 66901003	REGULATED SUBSTANCES FINAL CONSTRUCTION REPORT	LSUM	1	1		


^ DENOTES SPECIALTY ITEM

CODE NUMBER	ITEM	UNIT	TOTAL QUANTITY	HSIP FUNDS 90% FEDERAL 10% LOCAL		100% LOCAL
				0005 ROADWAY	0021 SAFETY	NON- PARTICIPATING
66901006	REGULATED SUBSTANCES MONITORING	CAL DA	15	15		
67100100	MOBILIZATION	LSUM	1	1		
70102625	TRAFFIC CONTROL AND PROTECTION, STANDARD 701606	LSUM	1	1		
70102632	TRAFFIC CONTROL AND PROTECTION, STANDARD 701602	LSUM	1	1		
70102635	TRAFFIC CONTROL AND PROTECTION, STANDARD 701701	LSUM	1	1		
70102640	TRAFFIC CONTROL AND PROTECTION, STANDARD 701801	LSUM	1	1		
70107025	CHANGEABLE MESSAGE SIGN	CAL DA	42	42		
70300100	SHORT TERM PAVEMENT MARKING	FOOT	1,795	1,795		
70300150	SHORT TERM PAVEMENT MARKING REMOVAL	SQ FT	599	599		
72000100	SIGN PANEL, TYPE 1	SQ FT	105	105		
72400100	REMOVE SIGN PANEL ASSEMBLY - TYPE A	EACH	3	3		
72400310	REMOVE SIGN PANEL - TYPE 1	SQ FT	33	33		
72400710	RELOCATE SIGN PANEL, TYPE 1	SQ FT	10	10		
72800100	TELESCOPING STEEL SIGN SUPPORT	FOOT	105	105		
73100100	BASE FOR TELESCOPING STEEL SIGN SUPPORT	EACH	5	5		
78000100	THERMOPLASTIC PAVEMENT MARKING - LETTERS AND SYMBOLS	SQ FT	37	37		
78000200	THERMOPLASTIC PAVEMENT MARKING - LINE 4"	FOOT	1,336	1,336		
78000400	THERMOPLASTIC PAVEMENT MARKING - LINE 6"	FOOT	233	233		

^ DENOTES SPECIALTY ITEM

CODE NUMBER	ITEM	UNIT	TOTAL QUANTITY	HSIP FUNDS 90% FEDERAL 10% LOCAL		100% LOCAL
				0005 ROADWAY	0021 SAFETY	NON- PARTICIPATING
^ 78000600	THERMOPLASTIC PAVEMENT MARKING - LINE 12"	FOOT	529	529		
^ 78000650	THERMOPLASTIC PAVEMENT MARKING - LINE 24"	FOOT	18	18		
^ 85000200	MAINTENANCE OF EXISTING TRAFFIC SIGNAL INSTALLATION	EACH	1		1	
^ 89502375	REMOVE EXISTING TRAFFIC SIGNAL EQUIPMENT	EACH	1		1	
^ 89502376	REBUILD EXISTING HANDHOLE	EACH	1		1	
^ X1400326	RECTANGULAR RAPID FLASHING BEACON ASSEMBLY (COMPLETE)	EACH	4		4	
X6030310	FRAMES AND LIDS TO BE ADJUSTED (SPECIAL)	EACH	4	4		
^ X6350108	FLEXIBLE DELINEATORS	EACH	16	16		
^ X7800100	PAINT PAVEMENT MARKING - RAISED MEDIAN	SQ FT	89	89		
^ X8760200	ACCESSIBLE PEDESTRIAN SIGNALS	EACH	2		2	
XX003668	PRECONSTRUCTION VIDEO TAPING	LSUM	1			1
Z0013798	CONSTRUCTION LAYOUT	LSUM	1	1		
Z0019598	DUST CONTROL (SPECIAL)	GALLON	1,000	1,000		
Z0030850	TEMPORARY INFORMATION SIGNING	SQ FT	129	129		

^ DENOTES SPECIALTY ITEM

 Two Pierce Place, Suite 1400  
 Itasca, Illinois 60143  
 Tel: 630.773.3900 Fax: 630.773.3975  
 www.civiltechinc.com

DESIGNED - PK	REVISED - 9/5/2023
DRAWN - JMG	REVISED - 9/13/2023
CHECKED - JJE	REVISED -
DATE - 8/4/2023	REVISED -

**STATE OF ILLINOIS  
 DEPARTMENT OF TRANSPORTATION**

**FARNSWORTH AVE. AT MARSHALL BLVD. AND IL PRAIRIE PATH  
 SUMMARY OF QUANTITIES**

SHEET 4 OF 4 SHEETS STA. TO STA.

F.A.P. RTE.	SECTION	COUNTY	TOTAL SHEETS	SHEET NO.
0360	19-00331-00-SP	KANE	21	7
FED. ROAD DIST. NO. 1 ILLINOIS FED. AID PROJECT			CONTRACT NO. 61J92	

**FARNSWORTH AVENUE  
ALIGNMENT DATA**

POINT	STATION	NORTHING	EASTING
BOA	77+00.00	1,865,157.74	998,270.57
PI	84+79.04	1,865,936.70	998,259.33
EOA	88+35.35	1,866,293.00	998,255.84

**MARSHALL BOULEVARD  
ALIGNMENT DATA**

POINT	STATION	NORTHING	EASTING
BOA	195+72.60	1,865,752.84	997,837.41
EOA	200+00.00	1,865,808.45	998,261.18

**CONTROL POINTS - FARNSWORTH AVENUE**

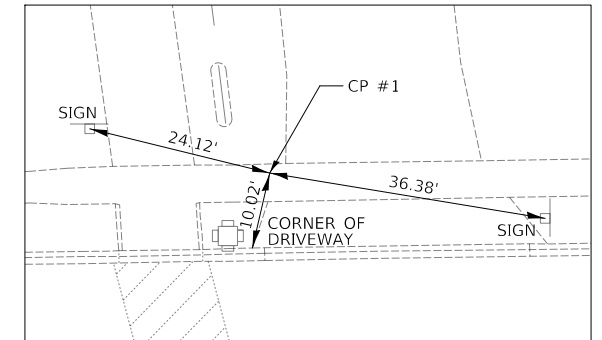
POINT NO.	NORTHING	EASTING	STATION	OFFSET	DESCRIPTION
CP #1	1,865,560.60	998,226.23	81+03.46	38.52' LT	CUT CROSS IN SIDEWALK
CP #2	1,865,775.19	998,222.32	83+18.08	39.34' LT	CUT CROSS IN SIDEWALK
CP #3	1,865,952.73	998,298.00	84+94.69	38.83' RT	CUT CROSS IN SIDEWALK

**CONTROL POINTS - MARSHALL BOULEVARD**

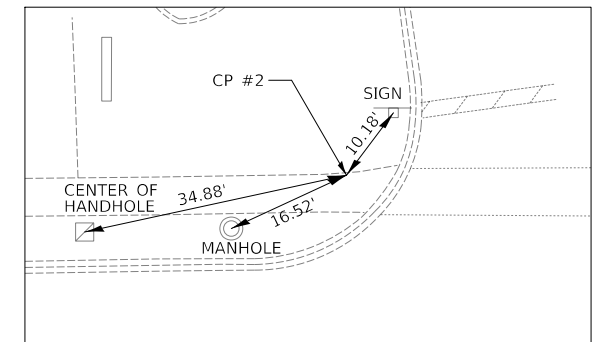
POINT NO.	NORTHING	EASTING	STATION	OFFSET	DESCRIPTION
CP #2	1,865,775.19	998,222.32	199+57.14	27.91' RT	CUT CROSS IN SIDEWALK

**BENCHMARKS**

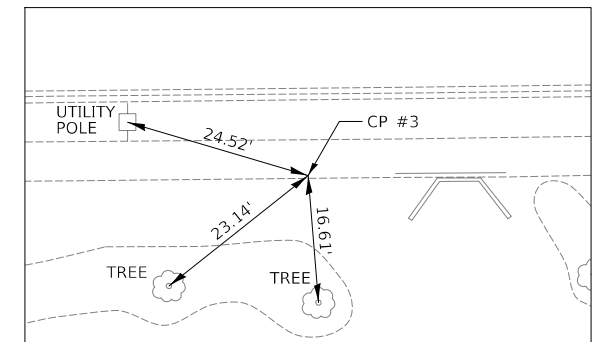
BENCHMARK NO.	LOCATION	ELEVATION	DESCRIPTION
BM #1	STA. 80+19.04, 32.28' RT	716.03	TAG BOLT ON FIRE HYDRANT
BM #2	STA. 82+31.00, 31.83' RT	716.42	TAG BOLT ON FIRE HYDRANT



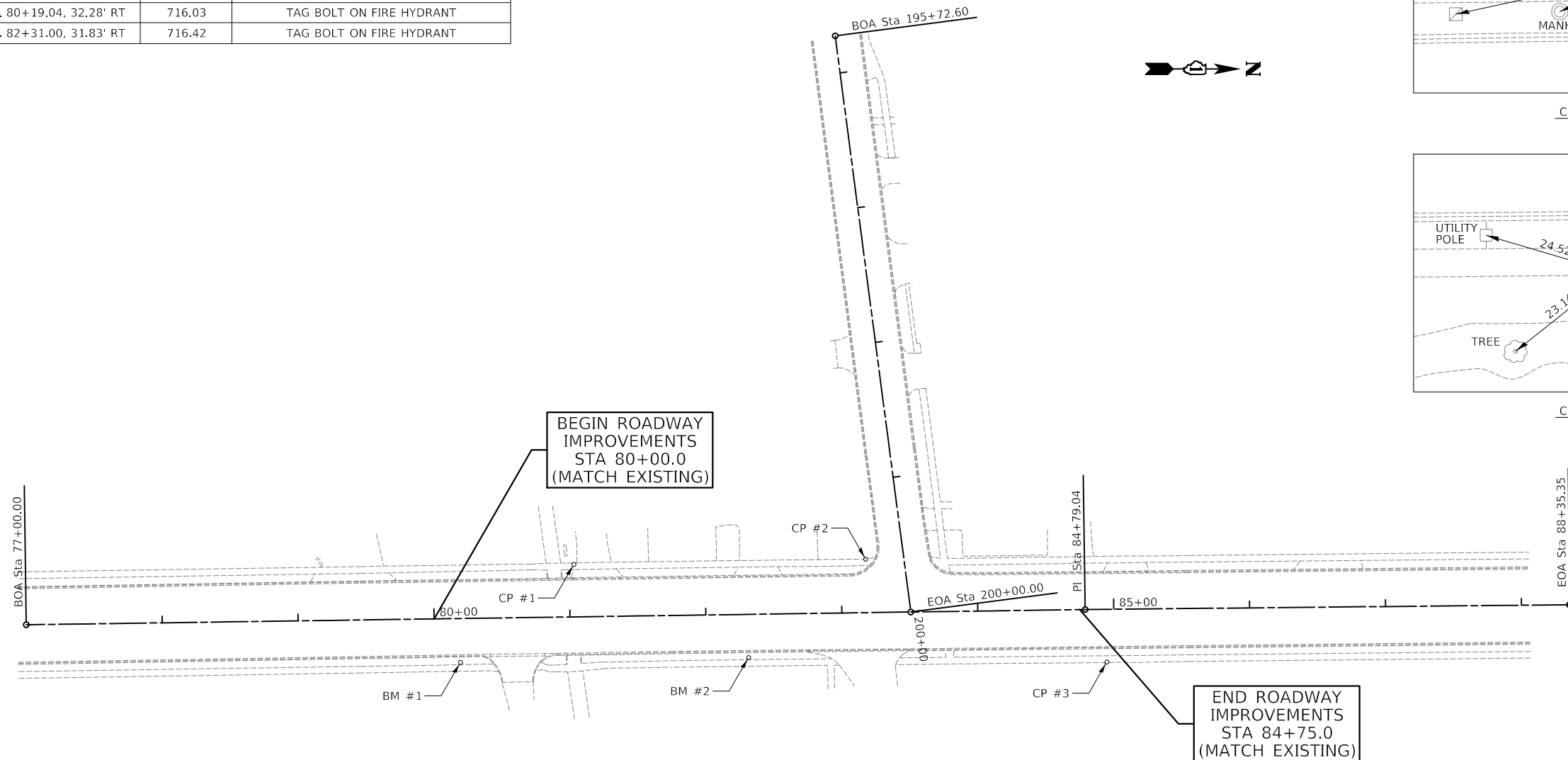
CONTROL POINT #1



CONTROL POINT #2

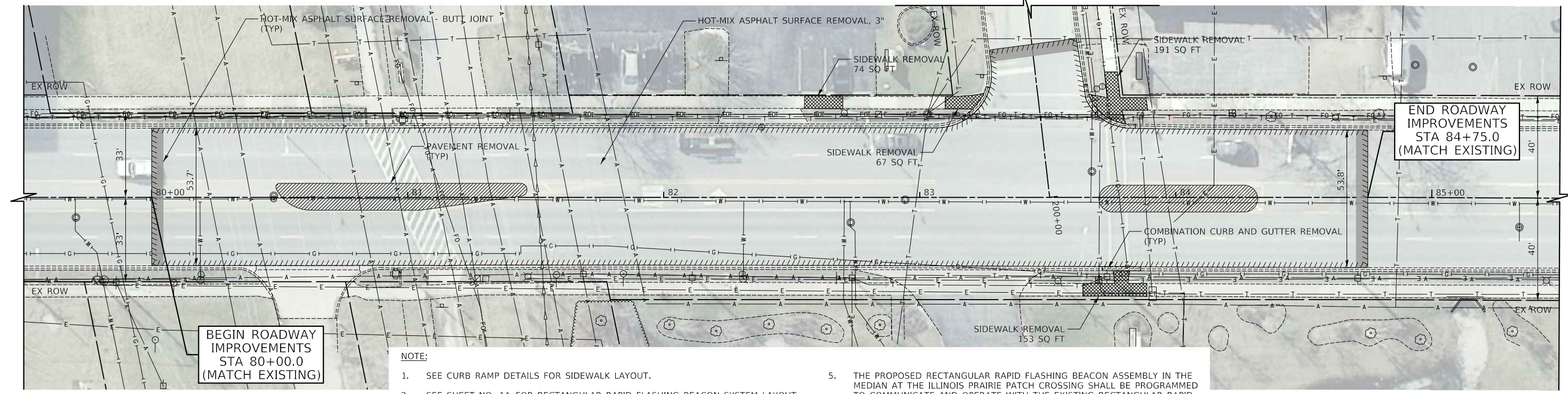


CONTROL POINT #3



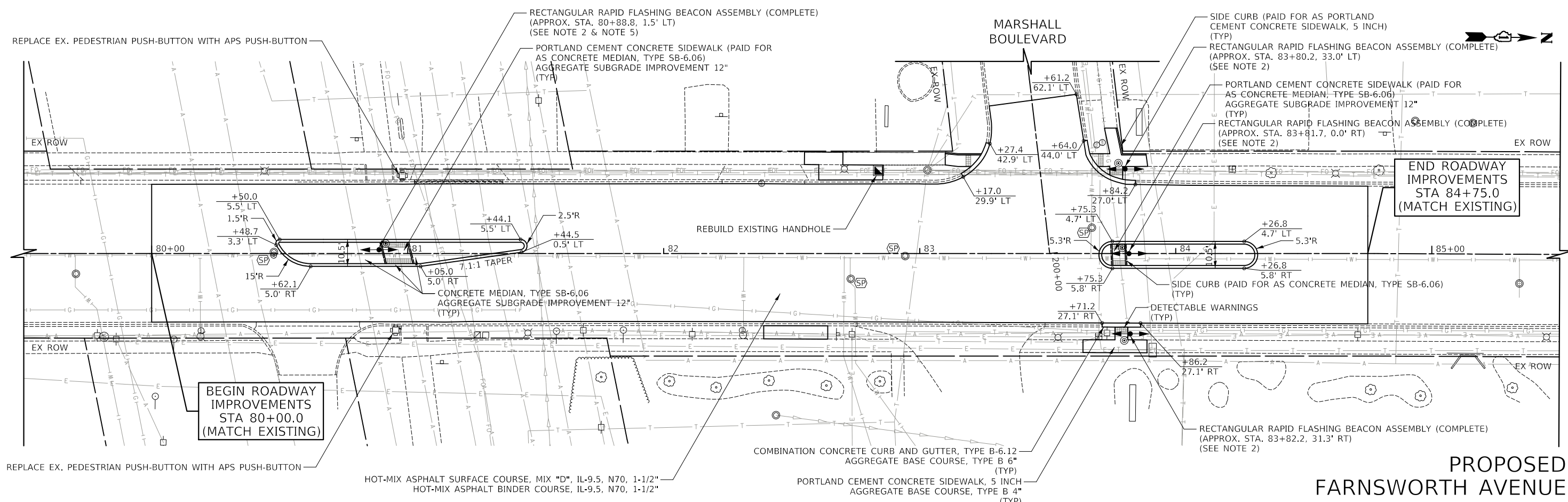


LEGEND			
	HOT-MIX ASPHALT SURFACE REMOVAL		CURB AND GUTTER REMOVAL
	HOT-MIX ASPHALT SURFACE REMOVAL - BUTT JOINT		DETECTABLE WARNINGS
	SIDEWALK REMOVAL		FRAMES AND LIDS TO BE ADJUSTED (SPECIAL)
	PAVEMENT REMOVAL		



- NOTE:**
- SEE CURB RAMP DETAILS FOR SIDEWALK LAYOUT.
  - SEE SHEET NO. 14 FOR RECTANGULAR RAPID FLASHING BEACON SYSTEM LAYOUT.
  - CONTRACTOR SHALL MILL FIRST BEFORE PATCHING.
  - THE MEDIAN CURB AND GUTTER SHALL MATCH THE PAVEMENT SURFACE ELEVATIONS WHERE THE CURB AND GUTTER MEETS THE PAVEMENT.
  - THE PROPOSED RECTANGULAR RAPID FLASHING BEACON ASSEMBLY IN THE MEDIAN AT THE ILLINOIS PRAIRIE PATCH CROSSING SHALL BE PROGRAMMED TO COMMUNICATE AND OPERATE WITH THE EXISTING RECTANGULAR RAPID FLASHING BEACONS AT EITHER END OF THE CROSSING.
  - THE RECTANGULAR RAPID FLASHING BEACONS AT THE ILLINOIS PRAIRIE PATH CROSSING AND THE MARSHALL BOULEVARD CROSSING SHALL OPERATE ON SEPARATE RF CHANNELS.

**EXISTING  
FARNSWORTH AVENUE**



**PROPOSED  
FARNSWORTH AVENUE**

**CIVILTECH**  
Two Pierce Place, Suite 1400  
Itasca, Illinois 60143  
Tel: 630.773.3900 Fax: 630.773.3975  
www.civiltechinc.com

DESIGNED - PK	REVISED - 9/5/2023
DRAWN - JMG	REVISED -
CHECKED - JJE	REVISED -
DATE - 8/4/2023	REVISED -

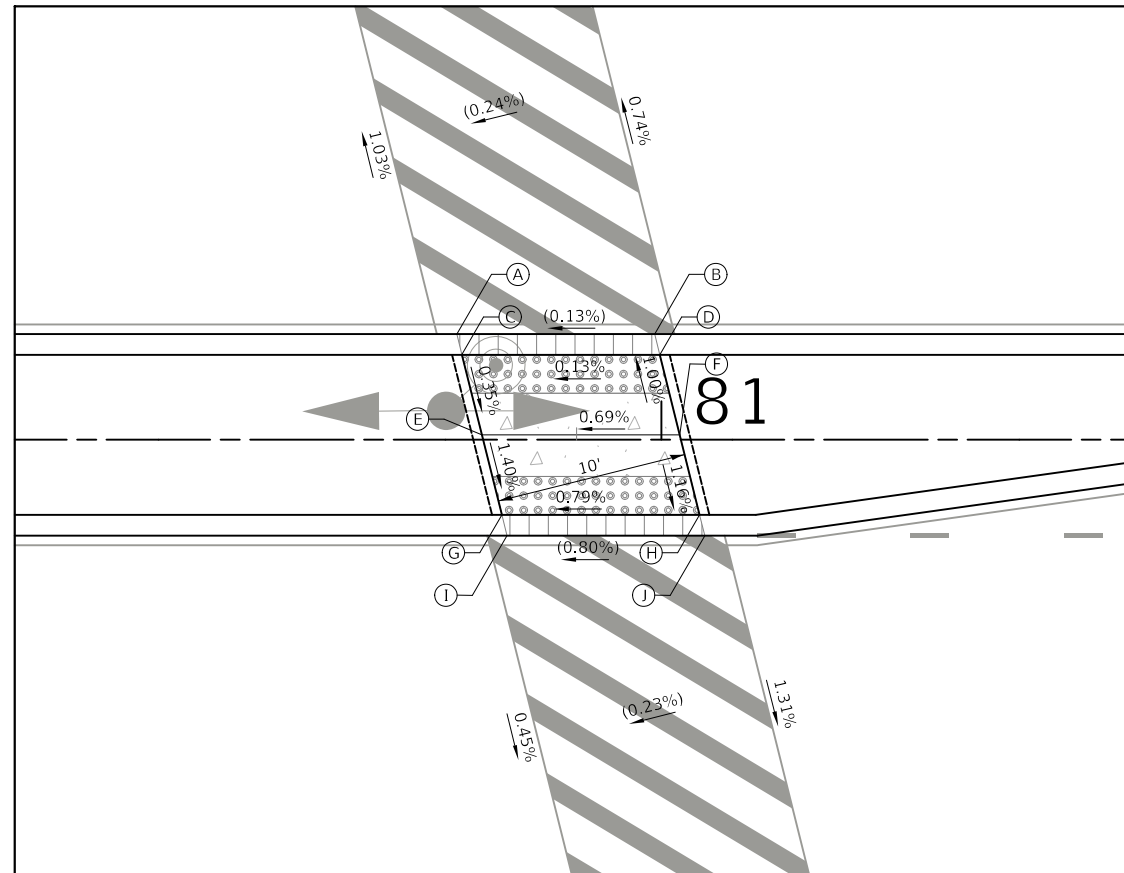
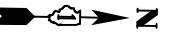
**STATE OF ILLINOIS  
DEPARTMENT OF TRANSPORTATION**



**FARNSWORTH AVE. AT MARSHALL BLVD. AND IL PRAIRIE PATH  
ROADWAY PLAN**

SHEET 1 OF 1 SHEETS STA. 79+50.00 TO STA. 85+50.00

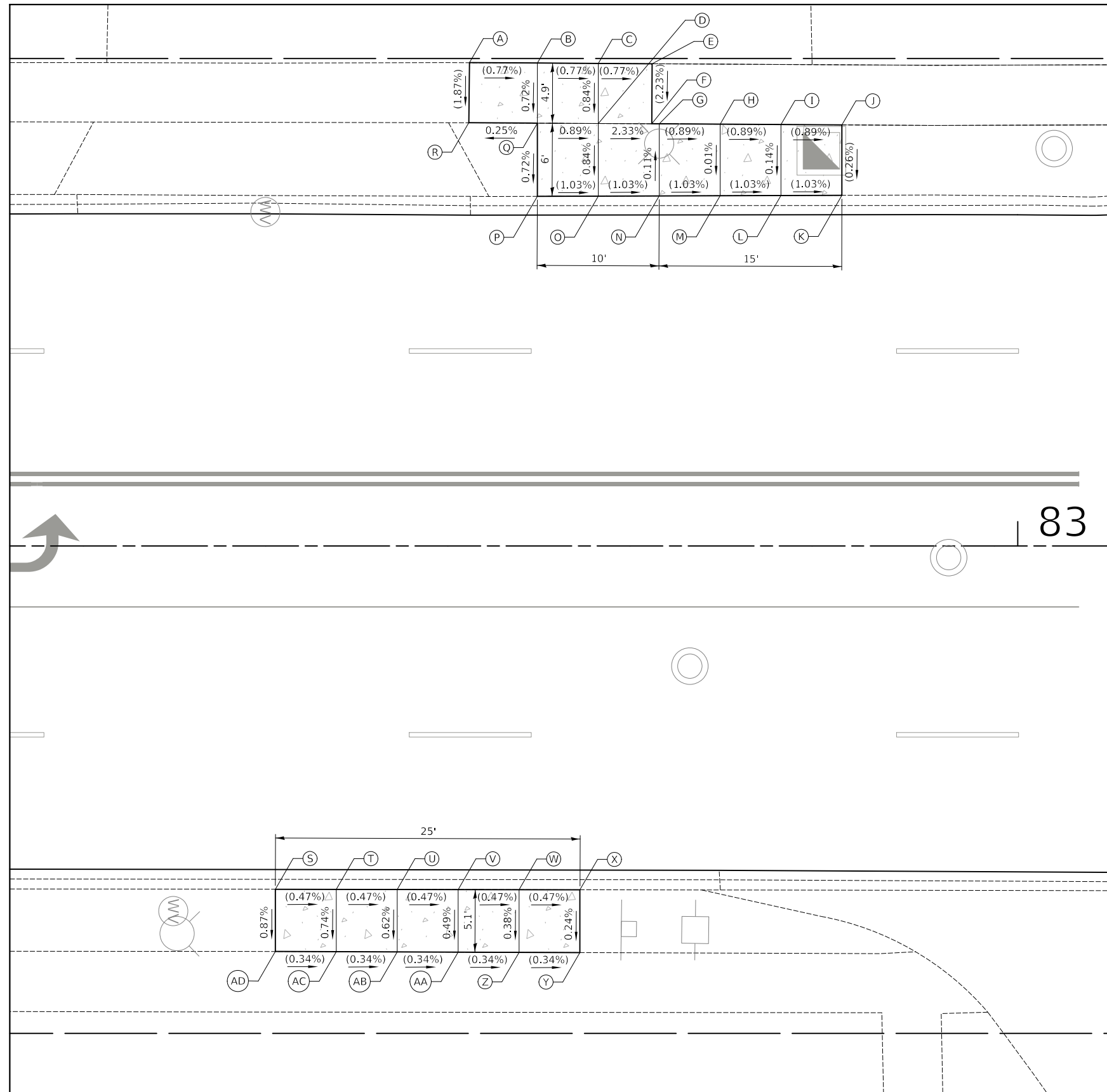
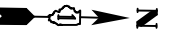
F.A.P. RTE.	SECTION	COUNTY	TOTAL SHEETS	SHEET NO.
0360	19-00331-00-5P	KANE	21	9
CONTRACT NO. 61J92				
FED. ROAD DIST. NO. 1 ILLINOIS FED. AID PROJECT				



POINT	STATION	OFFSET	ELEVATION
A	80+89.35	5.50' L	(714.39)
B	80+99.65	5.50' L	(714.40)
C	80+89.62	4.42' L	714.39
D	80+99.92	4.42' L	714.40
E	80+90.65	0.25' L	714.37
F	81+00.96	0.25' L	714.44
G	80+91.69	3.92' R	714.31
H	81+02.00	3.92' R	714.39
I	80+91.96	5.00' R	(714.31)
J	81+02.27	5.00' R	(714.39)

**LEGEND**

- PROPOSED SIDE CURB (PAID FOR AS PORTLAND CEMENT CONCRETE SIDEWALK, 5 INCH)
- DETECTABLE WARNINGS (SPECIAL)
- DEPRESSED CURB AND GUTTER
- EXISTING ELEVATION / SLOPE

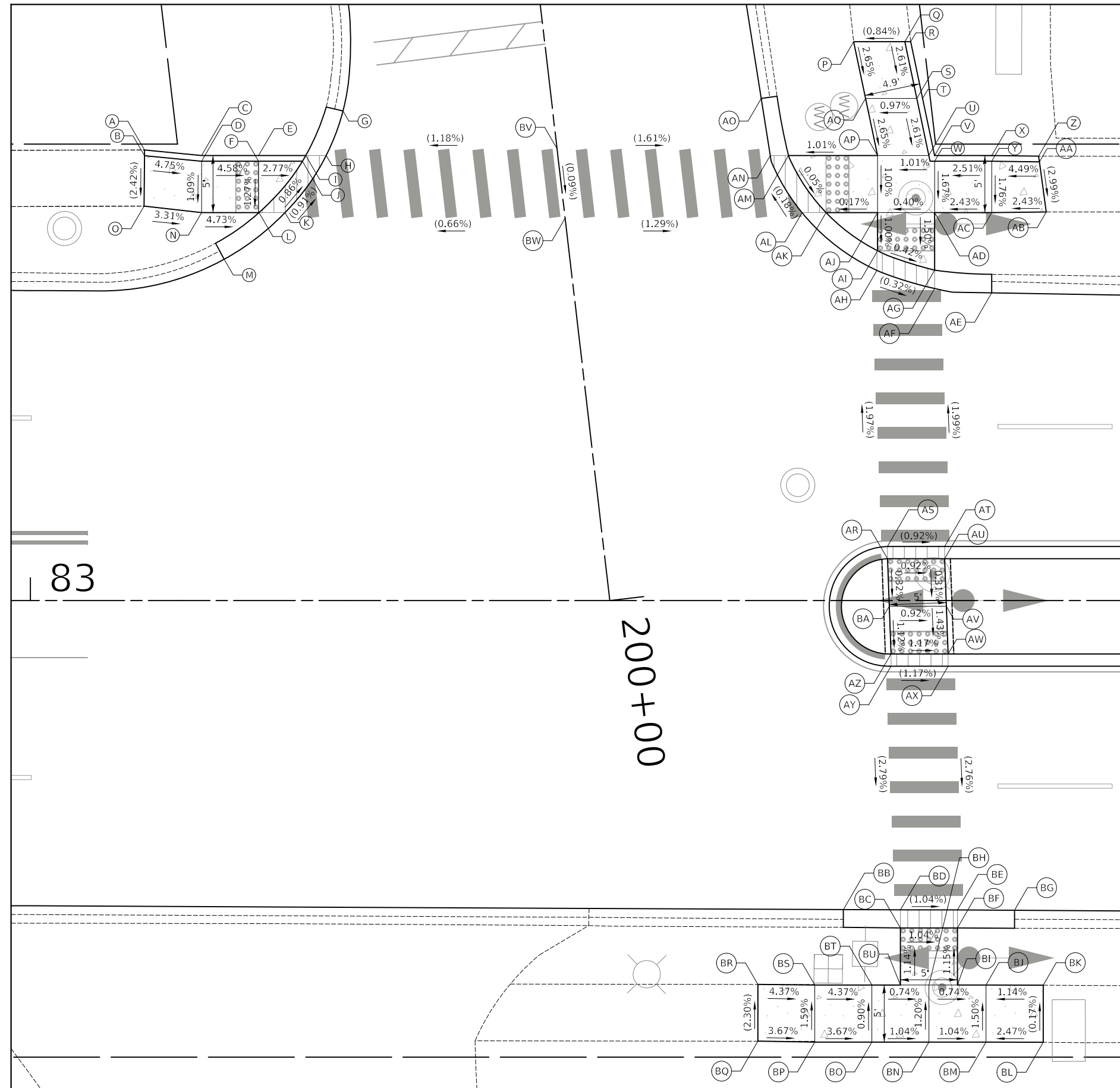
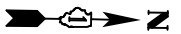


POINT	STATION	OFFSET	ELEVATION
A	82+55.00	39.66' L	(714.06)
B	82+60.57	39.63' L	(714.02)
C	82+65.57	39.60' L	(713.98)
D	82+65.57	34.67' L	713.94
E	82+70.00	39.57' L	(713.95)
F	82+69.97	34.64' L	(713.84)
G	82+70.57	34.64' L	(713.83)
H	82+75.57	34.61' L	(713.79)
I	82+80.57	34.58' L	(713.74)
J	82+85.57	34.55' L	(713.70)
K	82+85.57	28.77' L	(713.68)
L	82+80.57	28.76' L	(713.74)
M	82+75.57	28.74' L	(713.79)
N	82+70.57	28.73' L	(713.84)
O	82+65.57	28.71' L	(713.89)
P	82+60.57	28.69' L	(713.94)
Q	82+60.57	34.70' L	713.98
R	82+54.95	34.73' L	(713.97)
S	82+39.07	28.17' R	(714.08)
T	82+44.07	28.18' R	(714.05)
U	82+49.07	28.19' R	(714.03)
V	82+54.07	28.19' R	(714.01)
W	82+59.07	28.20' R	(713.98)
X	82+59.07	33.35' R	713.97
Y	82+64.07	28.21' R	(713.96)
Z	82+64.07	33.37' R	713.95
AA	82+68.87	33.38' R	(713.93)
AB	82+68.85	38.28' R	(713.97)
AC	82+64.07	38.28' R	714.00
AD	82+59.07	38.27' R	714.02
AE	82+54.07	38.27' R	(714.05)
AF	82+54.07	33.33' R	(713.98)
AG	82+49.07	33.31' R	(714.00)
AH	82+44.07	33.29' R	(714.02)
AI	82+39.07	33.28' R	(714.03)

**LEGEND**

- PROPOSED SIDE CURB (PAID FOR AS PORTLAND CEMENT CONCRETE SIDEWALK, 5 INCH)
- DETECTABLE WARNINGS (SPECIAL)
- DEPRESSED CURB AND GUTTER
- ( / ) EXISTING ELEVATION / SLOPE





POINT	STATION	OFFSET	ELEVATION	POINT	STATION	OFFSET	ELEVATION
A	83+10.00	39.49' L	(713.52)	AM	83+66.43	39.00' L	712.88
B	83+10.00	38.99' L	(713.51)	AN	83+64.83	39.00' L	(712.87)
C	83+15.00	39.00' L	(713.44)	AO	83+64.04	44.00' L	(712.77)
D	83+15.00	38.50' L	713.28	AP	83+74.24	39.00' L	712.93
E	83+20.00	39.00' L	(713.30)	AQ	83+73.19	44.00' L	713.07
F	83+20.00	38.50' L	713.05	AR	83+75.11	3.67' L	713.32
G	83+27.39	42.90' L	(712.90)	AS	83+75.11	4.75' L	(713.32)
H	83+25.92	39.00' L	(712.92)	AT	83+80.11	4.75' L	(713.28)
I	83+24.13	39.00' L	712.94	AU	83+80.11	3.67' L	713.28
J	83+23.84	38.50' L	712.94	AV	83+80.27	0.50' R	713.26
K	83+22.31	34.00' L	(712.98)	AW	83+80.42	4.67' R	713.20
L	83+20.03	34.00' L	712.99	AX	83+80.42	5.75' R	(713.20)
M	83+16.98	29.91' L	(713.04)	AY	83+75.42	5.75' R	(713.26)
N	83+15.00	34.00' L	713.23	AZ	83+75.42	4.67' R	713.26
O	83+09.95	34.57' L	(713.40)	BA	83+75.26	0.50' R	713.31
P	83+72.14	48.97' L	(713.20)	BB	83+71.24	27.08' R	(712.71)
Q	83+76.64	48.98' L	(713.24)	BC	83+76.24	28.68' R	712.67
R	83+77.15	48.98' L	(713.25)	BD	83+76.24	27.10' R	(712.67)
S	83+77.68	44.00' L	713.11	BE	83+81.24	27.10' R	(712.61)
T	83+78.19	44.00' L	(713.34)	BF	83+81.24	28.68' R	712.61
U	83+78.73	39.00' L	712.98	BG	83+86.24	27.13' R	(712.57)
V	83+79.24	39.00' L	(713.43)	BH	83+78.74	33.68' R	712.86
W	83+79.24	38.50' L	712.98	BI	83+81.24	33.68' R	712.84
X	83+84.24	39.00' L	(713.36)	BJ	83+83.74	33.68' R	712.81
Y	83+84.24	38.50' L	713.11	BK	83+88.76	33.70' R	(712.77)
Z	83+88.36	38.95' L	(713.29)	BL	83+88.76	38.70' R	(712.78)
AA	83+88.43	38.45' L	(713.27)	BM	83+83.74	38.68' R	712.72
AB	83+89.03	34.05' L	(713.14)	BN	83+78.74	38.68' R	712.76
AC	83+84.24	34.00' L	713.03	BO	83+73.74	38.68' R	712.79
AD	83+79.24	34.00' L	712.90	BP	83+68.74	38.68' R	713.01
AE	83+84.24	26.97' L	(712.80)	BQ	83+63.76	38.61' R	(713.23)
AF	83+79.24	27.35' L	(712.83)	BR	83+63.76	33.64' R	(713.12)
AG	83+79.24	28.97' L	712.83	BS	83+68.74	33.68' R	712.93
AH	83+74.18	28.94' L	(712.84)	BT	83+73.74	33.68' R	712.75
AI	83+74.24	30.66' L	712.85	BU	83+76.24	33.68' R	712.72
AJ	83+74.24	34.00' L	712.88	BV	83+46.15	39.60' L	(713.16)
AK	83+69.73	34.00' L	712.88	BW	83+46.86	33.52' L	(713.15)
AL	83+67.63	34.00' L	(712.88)				

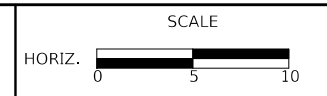
**LEGEND**

- PROPOSED SIDE CURB (PAID FOR AS PORTLAND CEMENT CONCRETE SIDEWALK, 5 INCH)
- DETECTABLE WARNINGS (SPECIAL)
- DEPRESSED CURB AND GUTTER
- ( ) EXISTING ELEVATION / SLOPE

**CIVILTECH**  
 Two Pierce Place, Suite 1400  
 Itasca, Illinois 60143  
 Tel: 630.773.3900 Fax: 630.773.3975  
 www.civiltechinc.com

DESIGNED - PK	REVISED -
DRAWN - JMG	REVISED -
CHECKED - JJE	REVISED -
DATE - 8/4/2023	REVISED -

**STATE OF ILLINOIS**  
**DEPARTMENT OF TRANSPORTATION**


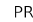





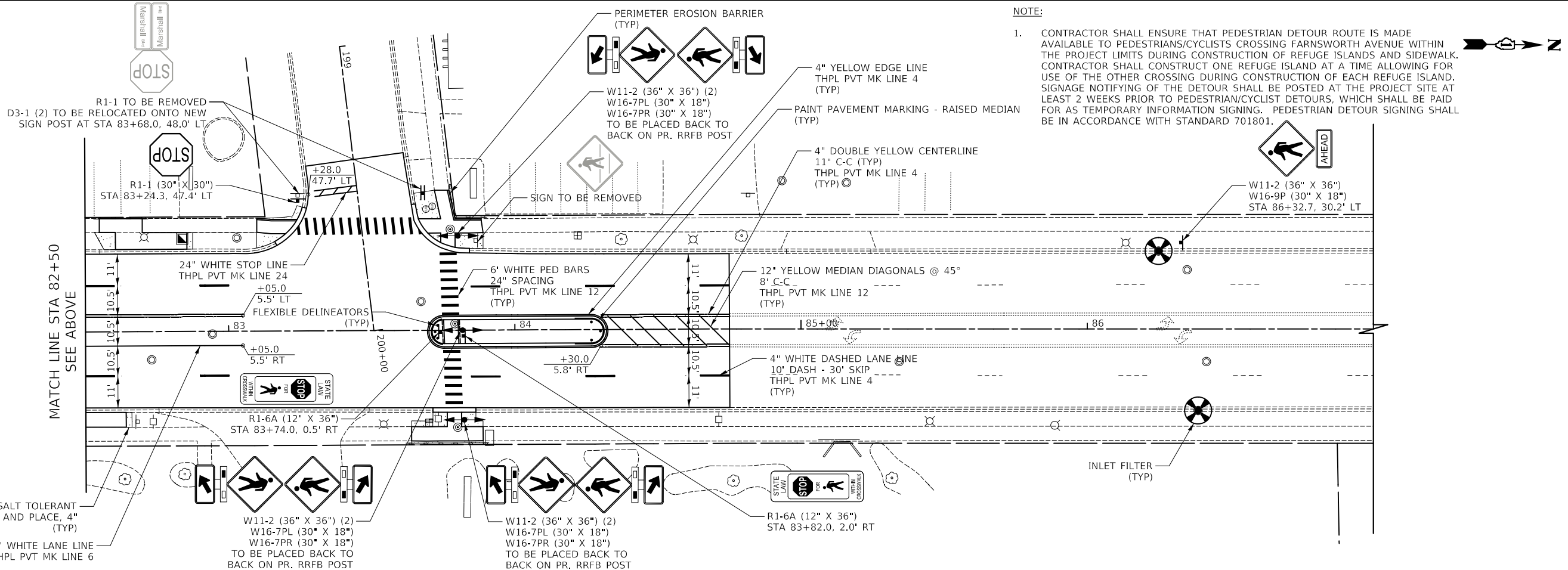
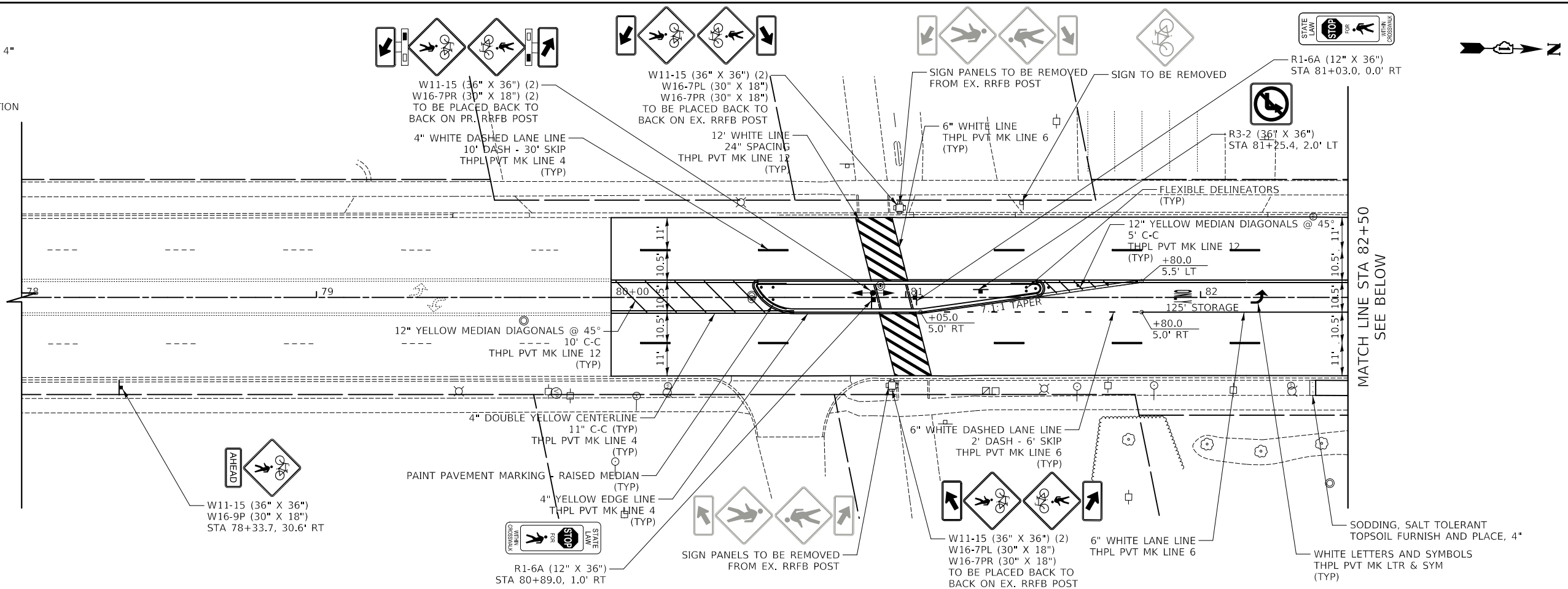
**FARNSWORTH AVE. AT MARSHALL BLVD. AND IL PRAIRIE PATH**  
**CURB RAMP DETAILS**

SHEET 3 OF 3 SHEETS STA. TO STA.

F.A.P. RTE.	SECTION	COUNTY	TOTAL SHEETS	SHEET NO.
0360	19-00331-00-5P	KANE	21	12
CONTRACT NO. 61192				
FED. ROAD DIST. NO. 1 ILLINOIS FED. AID PROJECT				

**LEGEND**

-  SODDING, SALT TOLERANT TOPSOIL FURNISH AND PLACE, 4"
-  PROPOSED SIGN
-  EXISTING TREES AND VEGETATION
-  PROPOSED PERIMETER EROSION BARRIER
-  INLET FILTER



**NOTE:**

- CONTRACTOR SHALL ENSURE THAT PEDESTRIAN DETOUR ROUTE IS MADE AVAILABLE TO PEDESTRIANS/CYCLISTS CROSSING FARNSWORTH AVENUE WITHIN THE PROJECT LIMITS DURING CONSTRUCTION OF REFUGE ISLANDS AND SIDEWALK. CONTRACTOR SHALL CONSTRUCT ONE REFUGE ISLAND AT A TIME ALLOWING FOR USE OF THE OTHER CROSSING DURING CONSTRUCTION OF EACH REFUGE ISLAND. SIGNAGE NOTIFYING OF THE DETOUR SHALL BE POSTED AT THE PROJECT SITE AT LEAST 2 WEEKS PRIOR TO PEDESTRIAN/CYCLIST DETOURS, WHICH SHALL BE PAID FOR AS TEMPORARY INFORMATION SIGNING. PEDESTRIAN DETOUR SIGNING SHALL BE IN ACCORDANCE WITH STANDARD 701801.

**CIVILTECH**  
 Two Pierce Place, Suite 1400  
 Itasca, Illinois 60143  
 Tel: 630.773.3900 Fax: 630.773.3975  
 www.civiltechinc.com

DESIGNED - PK	REVISED - 9/5/2023
DRAWN - JMG	REVISED -
CHECKED - JJE	REVISED -
DATE - 8/4/2023	REVISED -

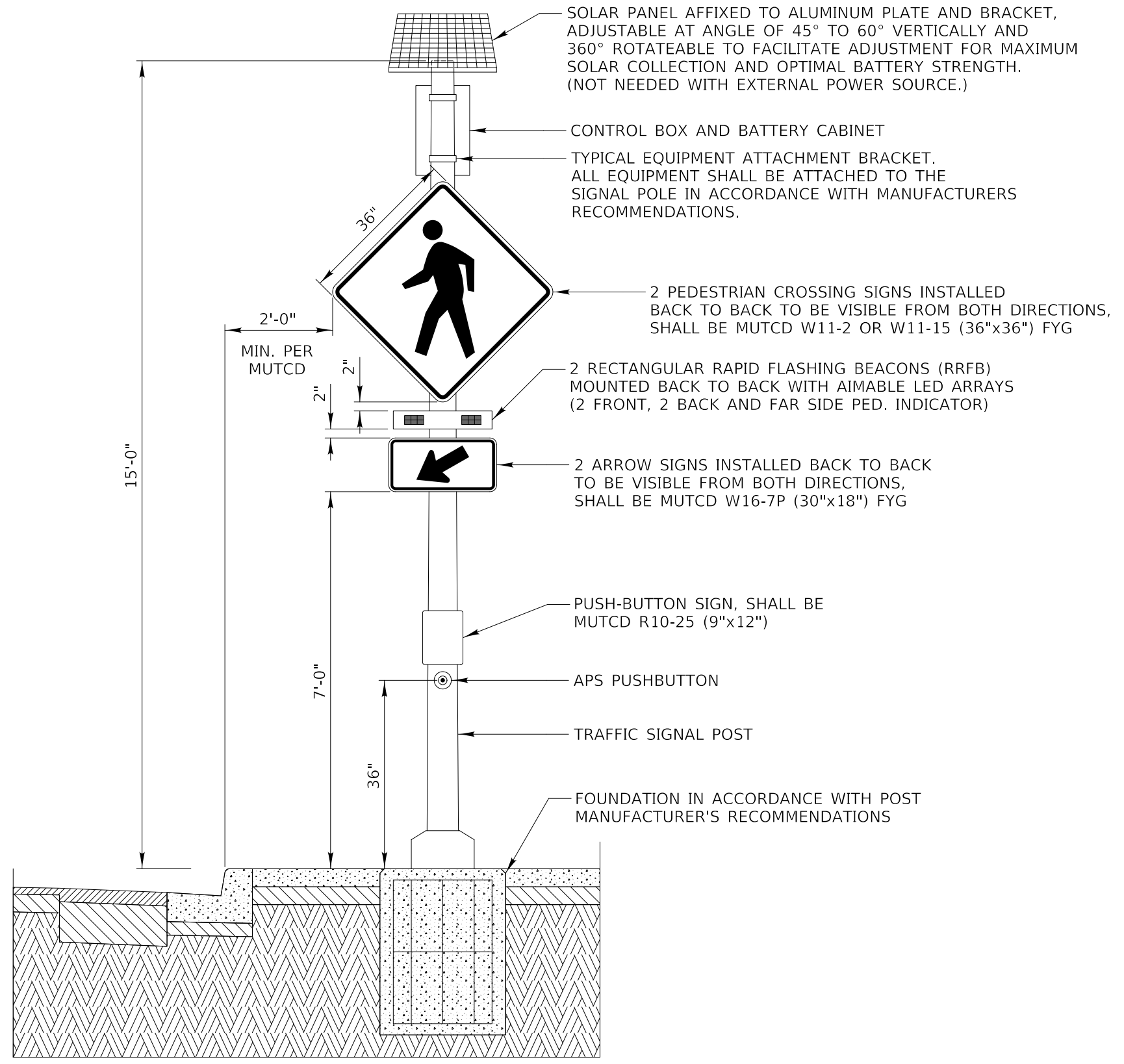
**STATE OF ILLINOIS**  
**DEPARTMENT OF TRANSPORTATION**

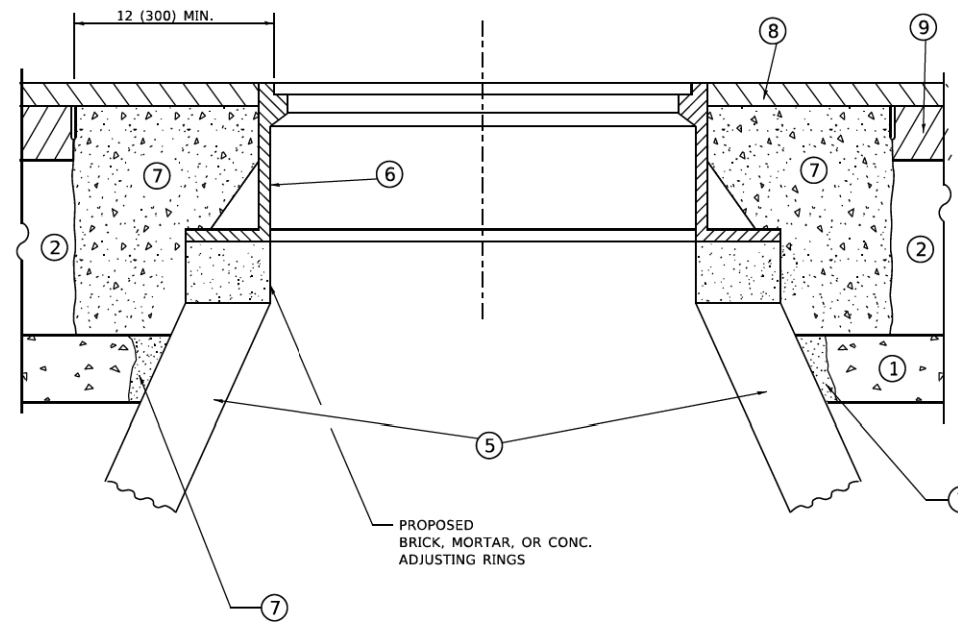
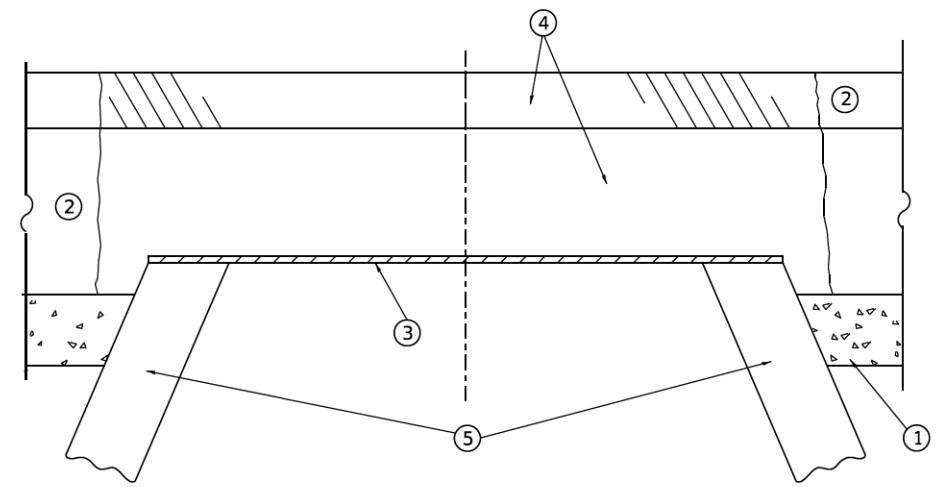


**FARNSWORTH AVE. AT MARSHALL BLVD. AND IL PRAIRIE PATH**  
**PAVEMENT MARKING, SIGNING, AND LANDSCAPE RESTORATION PLAN**

F.A.P. RTE. 0360	SECTION 19-00331-00-5P	COUNTY KANE	TOTAL SHEETS 21	SHEET NO. 13
CONTRACT NO. 61J92				
FED. ROAD DIST. NO. 1 ILLINOIS FED. AID PROJECT				

SHEET 1 OF 1 SHEETS STA. 78+00.00 TO STA. 87+00.00





**DETAILS FOR FRAMES AND LIDS ADJUSTMENT  
WITH MILLING**

**CONSTRUCTION PROCEDURES**

**STAGE 1 (BEFORE PAVEMENT MILLING)**

- A) REMOVE A MINIMUM OF 12 (300) OF THE PAVEMENT FROM AROUND THE STRUCTURE.
- B) REMOVE THE EXISTING FRAME AND LID FROM THE STRUCTURE.
- C) COVER THE STRUCTURE OPENING WITH A 36 (900) DIAMETER METAL PLATE.
- D) BACKFILL WITH CRUSHED STONE AND HMA SURFACE MIX APPROVED BY THE ENGINEER. (MIN. 1 1/2 (40) HMA TO REMAIN AFTER MILLING).

**STAGE 2 (AFTER PAVEMENT MILLING)**

- A) REMOVE THE HMA SURFACE MIX AND CRUSHED STONE.
- B) INSTALL THE FRAME AND LID; ADJUST THE FRAME TO ITS FINAL SURFACE ELEVATION.
- C) THE SURROUNDING SPACE SHALL BE FILLED WITH CLASS\*PP-1 CONCRETE TO THE ELEVATION OF THE SURFACE OF THE EXISTING BASE COURSE OR THE BINDER COURSE.

\* UNLESS OTHERWISE SPECIFIED IN THE PLANS.

THE PROCEDURE EXPLAINED ABOVE SHALL CONFORM TO THE APPLICABLE PORTIONS OF SECTIONS 353, 406, 602, AND 603 OF THE STANDARD SPECIFICATIONS EXCEPT THAT "THE CONTRACTOR SHALL ADJUST THE STRUCTURES TO THE FINISHED PAVEMENT ELEVATION NO MORE THAN 5 CALENDAR DAYS PRIOR TO PLACEMENT OF THE FINAL LIFT OF SURFACE UNLESS APPROVED BY THE ENGINEER."

**LEGEND**

- ① SUB-BASE GRANULAR MATERIAL
- ② EXISTING PAVEMENT
- ③ 36 (900) DIAMETER METAL PLATE
- ④ PROPOSED CRUSHED STONE AND HMA SURFACE MIX
- ⑤ EXISTING STRUCTURE
- ⑥ FRAME AND LID (SEE NOTES)
- ⑦ CLASS\*PP-1 CONCRETE
- ⑧ PROPOSED HMA SURFACE COURSE
- ⑨ PROPOSED HMA BINDER COURSE

**LOCATION OF STRUCTURES**

THE CONTRACTOR WILL BE REQUIRED TO KEEP A RECORD OF THE LOCATIONS OF THE BURIED STRUCTURES ACCORDING TO THE STATION AND DISTANCE LEFT OR RIGHT OF THE CENTERLINE OF PAVEMENT. UPON COMPLETION OF THE WORK, THE CONTRACTOR WILL DELIVER THE RECORD TO THE ENGINEER.

**BASIS OF PAYMENT**

- 1. REMOVING FRAMES AND LIDS ON DRAINAGE AND UTILITY STRUCTURES IN THE PAVEMENT PRIOR TO MILLING, AND ADJUSTING TO FINAL GRADE PRIOR TO PLACING THE SURFACE COURSE, WILL BE PAID FOR AT THE CONTRACT UNIT PRICE EACH FOR "FRAMES AND LIDS TO BE ADJUSTED (SPECIAL)."
- 2. THIS WORK WILL NOT BE PAID FOR WHEN DRAINAGE AND UTILITY STRUCTURES ARE SPECIFIED FOR PAYMENT AS STRUCTURE RECONSTRUCTION.
- 3. NEW FRAMES AND LIDS, WHEN SPECIFIED, WILL BE PAID FOR SEPARATELY.
- 4. WHEN STRUCTURES ARE TO BE ADJUSTED OR RECONSTRUCTED, THE LOWERING AND RAISING OF THE FRAMES AND LIDS WILL NOT BE PAID FOR SEPARATELY BUT WILL BE INCLUDED IN THE COST OF THE CORRESPONDING PAY ITEM.

ALL DIMENSIONS ARE IN INCHES (MILLIMETERS) UNLESS OTHERWISE SHOWN

**NOTES**

- 1. EXISTING BROKEN FRAMES AND LIDS SHALL BE REMOVED AND DISPOSED OF BY THE CONTRACTOR AND SHALL BE REPLACED AS DIRECTED BY THE ENGINEER. REPLACEMENT FRAMES AND LIDS WILL BE PAID FOR IN ACCORDANCE WITH ARTICLE 109.04 OF THE STANDARD SPECIFICATIONS UNLESS A SEPARATE PAY ITEM HAS BEEN PROVIDED.
- 2. IF THE EXISTING LIDS ARE OPEN, THE FRAME WILL BE ADJUSTED TO THE ELEVATION OF THE MILLED PAVEMENT SURFACE PRIOR TO THE MILLING OPERATION. THE FRAME WILL NOT BE REMOVED AND COVERED BY THE METAL PLATE.
- 3. CITY OF CHICAGO CASTINGS ARE THE PROPERTY OF THE CITY AND THE CONTRACTOR SHALL NOTIFY THE CITY FOR REMOVAL AND DISPOSITION OF THE CASTINGS.
- 4. THE METAL PLATE USED TO COVER THE STRUCTURE SHALL REMAIN THE PROPERTY OF THE CONTRACTOR.

MODEL: Default  
 FILE: \\mscfe-prod-wb-beenherz.com\FWID01\Documents\DOT\_Offices\BIRide\_11\Projects\BID\545623\2\ACAD\Drawings\CAD\Sheet\B08.dgn

USER NAME = Lawrence,DeManche	DESIGNED - R. SHAH	REVISED - R. BORO 01-01-07
	DRAWN -	REVISED - R. BORO 03-09-11
PLOT SCALE = 100,0000' / in.	CHECKED -	REVISED - R. BORO 12-06-11
PLOT DATE = 11/18/2022	DATE - 10-25-94	REVISED - K. SMITH 11-18-22

**STATE OF ILLINOIS  
DEPARTMENT OF TRANSPORTATION**

**DETAILS FOR  
FRAMES AND LIDS ADJUSTMENT WITH MILLING**

SCALE: NONE SHEET 1 OF 1 SHEETS STA. TO STA.

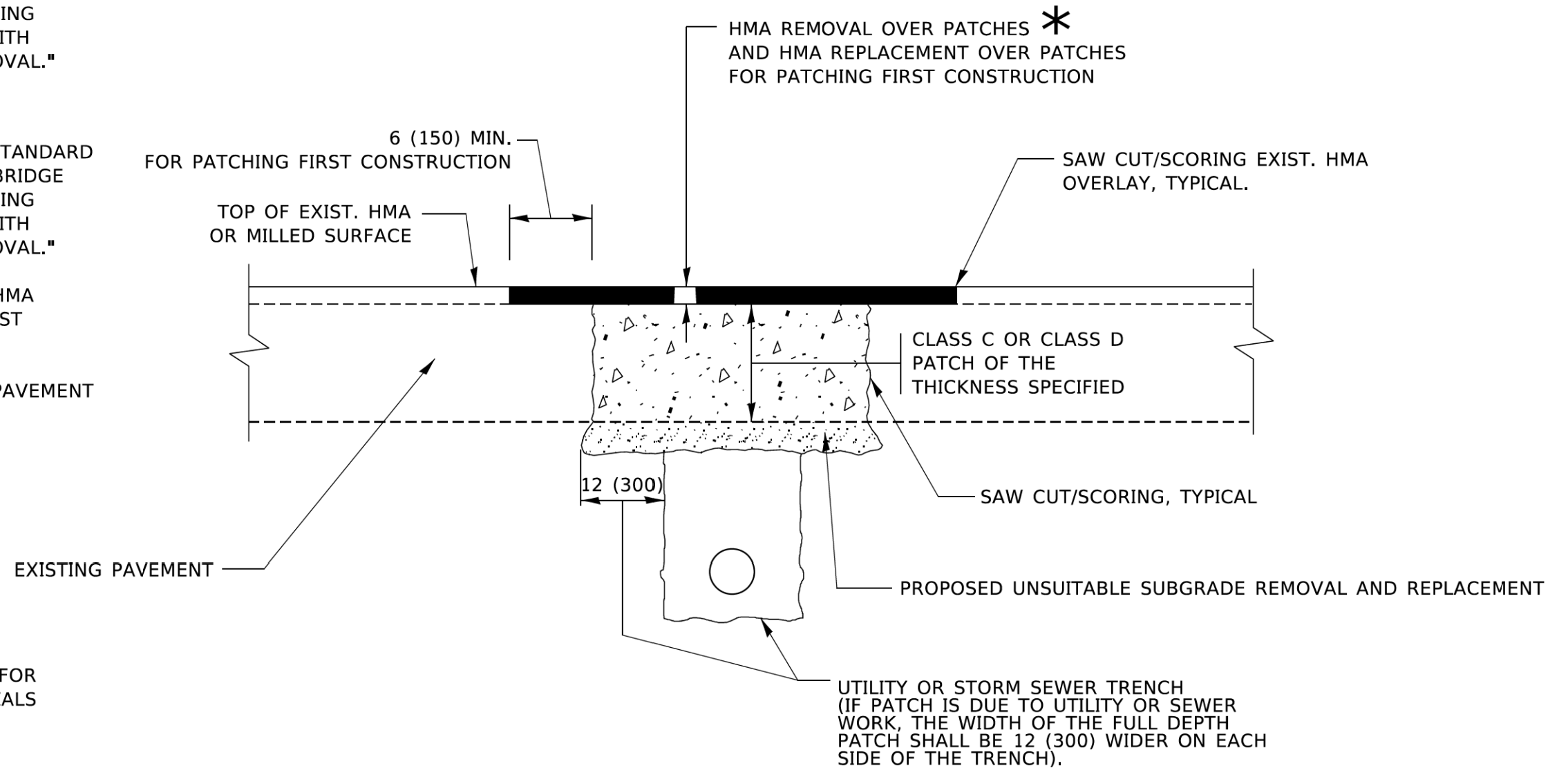
F.A.U. RTE.	SECTION	COUNTY	TOTAL SHEETS	SHEET NO.
0360	19-00331-00-5P	KANE	21	15
BD600-03 (BD-08)			CONTRACT NO. 61J92	
ILLINOIS FED. AID PROJECT				

**METHOD OF MEASUREMENT**

REFER TO SECTION 442 OF THE STANDARD SPECIFICATIONS FOR ROAD AND BRIDGE CONSTRUCTION AND THE RECURRING SPECIAL PROVISION "PATCHING WITH HOT-MIX ASPHALT OVERLAY REMOVAL."

**BASIS OF PAYMENT**

1. REFER TO SECTION 442 OF THE STANDARD SPECIFICATIONS FOR ROAD AND BRIDGE CONSTRUCTION AND THE RECURRING SPECIAL PROVISION "PATCHING WITH HOT-MIX ASPHALT OVERLAY REMOVAL."
2. SAW CUT/SCORING OF EXISTING HMA OVERLAY IS INCLUDED IN THE COST OF PAVEMENT PATCHING.
3. SAW CUT/SCORING OF EXISTING PAVEMENT IS INCLUDED IN THE COST OF PAVEMENT PATCHING.



\* SEE TYPICAL SECTIONS FOR THICKNESS AND MATERIALS

**SEQUENCE OF CONSTRUCTION (PATCHING FIRST)**

1. REMOVE THE EXISTING HMA MATERIAL OVER THE AREA TO BE PATCHED.
2. REMOVE AND REPLACE WITH CLASS C OR D PATCH.
3. REPLACE HMA MATERIAL OVER THE AREA TO BE PATCHED.

**SEQUENCE OF CONSTRUCTION (MILLING FIRST)**

1. MILL HMA FIRST IF THERE IS AT LEAST 4½ INCHES OR MORE OF HMA MATERIAL ON TOP OF THE EXISTING PAVEMENT OR IF THE PAVEMENT IS FULL DEPTH HMA. A MINIMUM OF 2 INCHES OF HMA MATERIAL SHALL BE IN PLACE AFTER MILLING.
2. REMOVE AND REPLACE WITH FULL DEPTH CLASS D PATCHES TO TOP OF MILLED SURFACE.

ALL DIMENSIONS ARE IN INCHES (MILLIMETERS) UNLESS OTHERWISE SHOWN.

MODEL: Default  
FILE NAME: p:\projects\19-00331-00-SP\19-00331-00-SP-01\19-00331-00-SP-01-CADD\DATA\CAD\sheet\bd22.dgn

USER NAME = Lawrence,DeManche	DESIGNED - R. SHAH	REVISED - R. BORO 01-01-07
	DRAWN -	REVISED - R. BORO 09-04-07
PLOT SCALE = 100,0000 ' / in.	CHECKED -	REVISED - K. ENG 10-27-08
PLOT DATE = 11/18/2022	DATE - 10-25-94	REVISED - K. SMITH 11-18-22

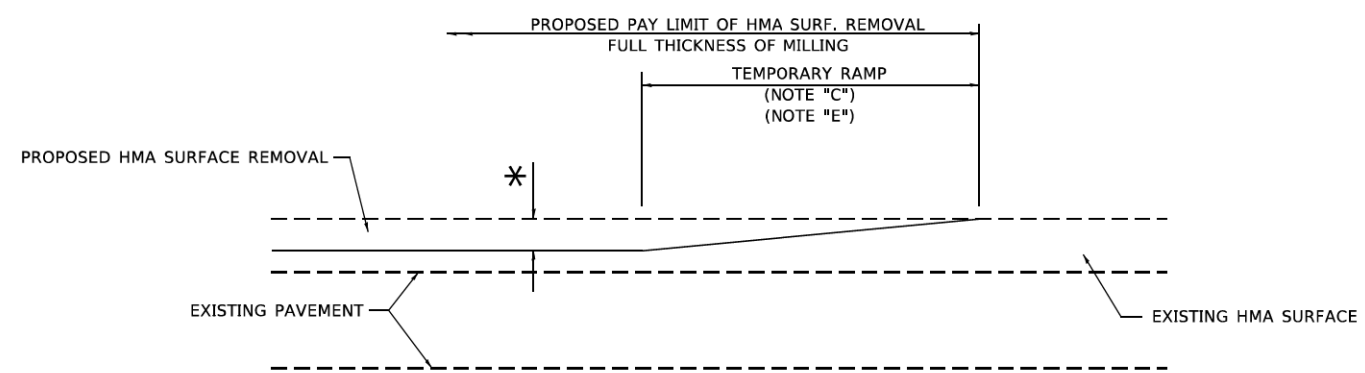
STATE OF ILLINOIS  
DEPARTMENT OF TRANSPORTATION

PAVEMENT PATCHING FOR  
HMA SURFACED PAVEMENT

SCALE: NONE SHEET 1 OF 1 SHEETS STA. TO STA.

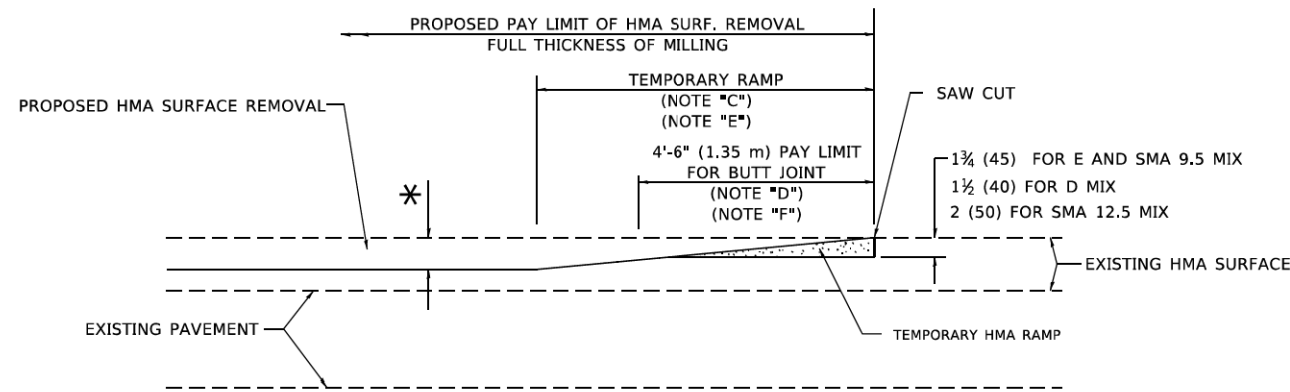
F.A.U. RTE.	SECTION	COUNTY	TOTAL SHEETS	SHEET NO.
0360	19-00331-00-SP	KANE	21	16
BD400-04 (BD-22)			CONTRACT NO. 61J92	
ILLINOIS FED. AID PROJECT				





**MILLED TEMPORARY RAMP**  
(FOR BUTT JOINT AND HMA TAPER SEE DETAIL BELOW)

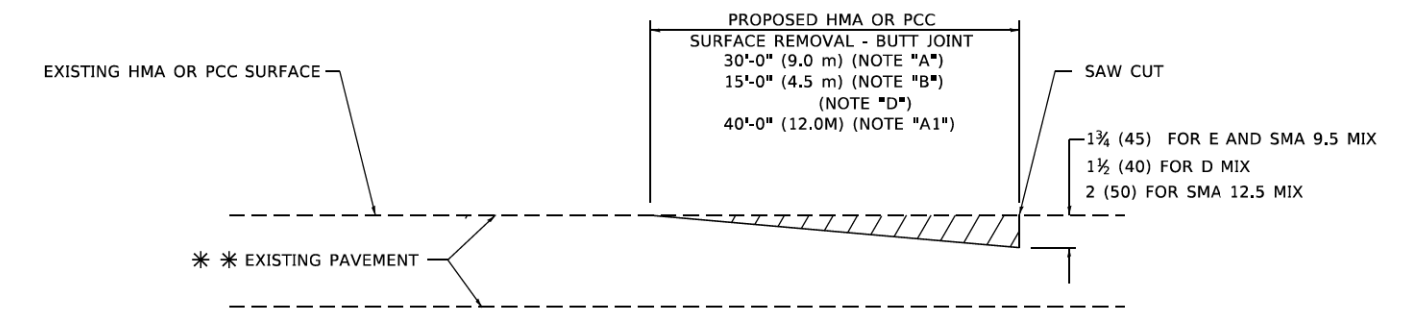
**OPTION 1**



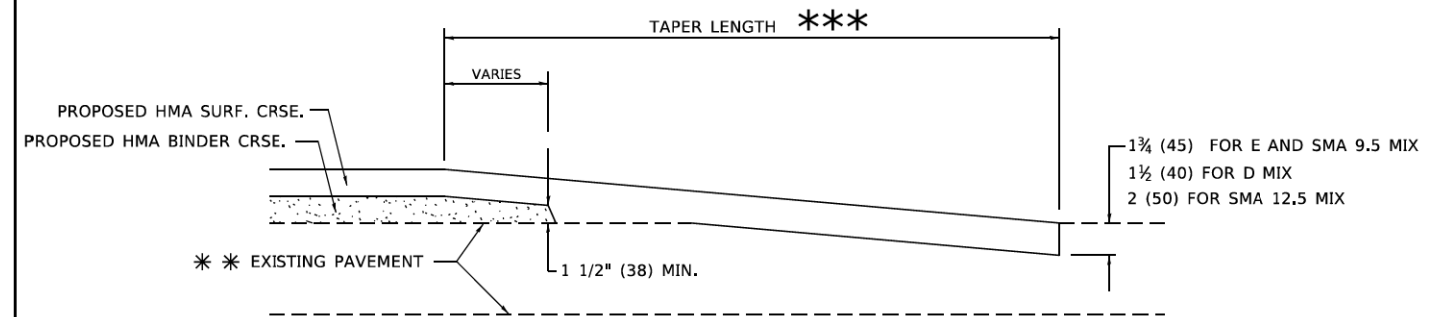
**HMA CONSTRUCTED TEMPORARY RAMP**  
(FOR BUTT JOINT AND HMA TAPER SEE DETAIL BELOW)

**OPTION 2**

**TYPICAL TEMPORARY RAMP**



**BUTT JOINT DETAIL**



**HMA TAPER DETAIL**

**TYPICAL BUTT JOINT AND HMA TAPER FOR RESURFACING ONLY**

\*\* PC CONCRETE, HMA OR HMA RESURFACED PAVEMENT.

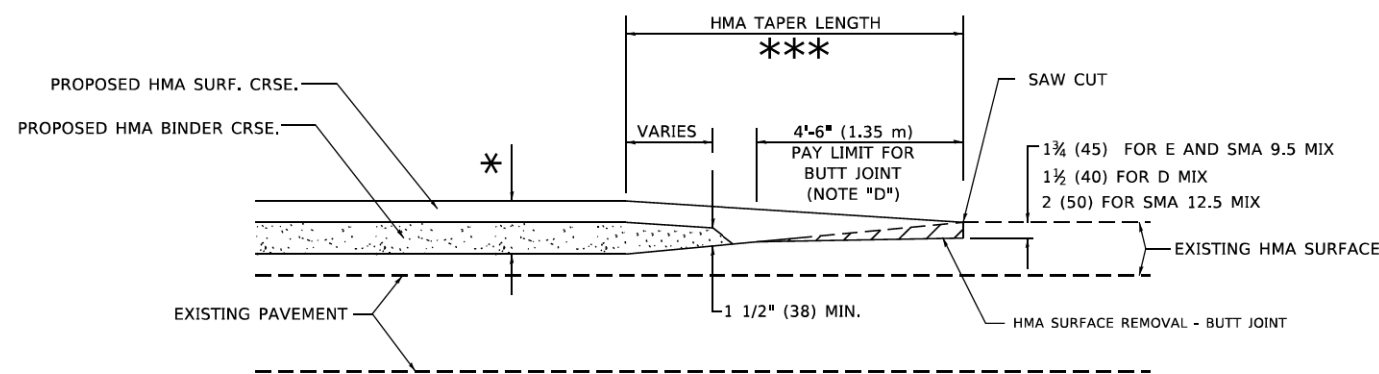
**GENERAL NOTES**

- A. MAINLINE ARTERIAL ROADWAYS AND MAJOR SIDE ROADS.
- A1. INTERSTATES
- B. MINOR SIDE ROADS.
- C. THE TEMP. RAMP SHALL BE CONSTRUCTED IMMEDIATELY UPON REMOVAL OF THE EXISTING HMA SURFACE.
- D. THE BUTT JOINT SHALL BE CONSTRUCTED IMMEDIATELY PRIOR TO PLACING THE PROPOSED HMA COURSES.
- E. TAPER THE TEMP. RAMP AT A RATE OF 3' - 4" (1.02m) PER 1 INCH (25 mm) OF MILLING THICKNESS.  
\* SEE TYPICAL SECTIONS FOR MILLING THICKNESS.
- F. SEE ARTICLE 406.08 AND 406.14 OF THE STANDARD SPECIFICATIONS FOR "HMA AND/OR PCC SURFACE REMOVAL, BUTT JOINT".  
\*\*\* 20'-0" (6.1 m) PER 1 (25) RESURFACING (NOTE "A")  
10'-0" (3.0 m) PER 1 (25) RESURFACING (NOTE "B")

**BASIS OF PAYMENT**

1. THE BUTT JOINT WILL BE PAID FOR AT THE CONTRACT UNIT PRICE PER SQUARE YARD (SQUARE METER) FOR "HOT-MIX ASPHALT SURFACE REMOVAL - BUTT JOINT" OR FOR "PORTLAND CEMENT CONCRETE SURFACE REMOVAL- BUTT JOINT".
2. THE TEMPORARY RAMP AND SAW CUT SHALL BE INCLUDED IN THE UNIT COST FOR HMA OR PCC SURFACE REMOVAL-BUTT JOINT.

ALL DIMENSIONS ARE IN INCHES (MILLIMETERS) UNLESS OTHERWISE SHOWN.



**BUTT JOINT AND HMA TAPER**

**TYPICAL BUTT JOINT AND HMA TAPER FOR MILLING AND RESURFACING**

MODEL: Default  
FILE NAME: Proj\Bids\paw\_bentley.com\FWIDOT\Documents\DOT\_Offices\Dir\c.11\Projects\Bids\19-00331-00-SP\CAD\Sheet\bd32.dgn

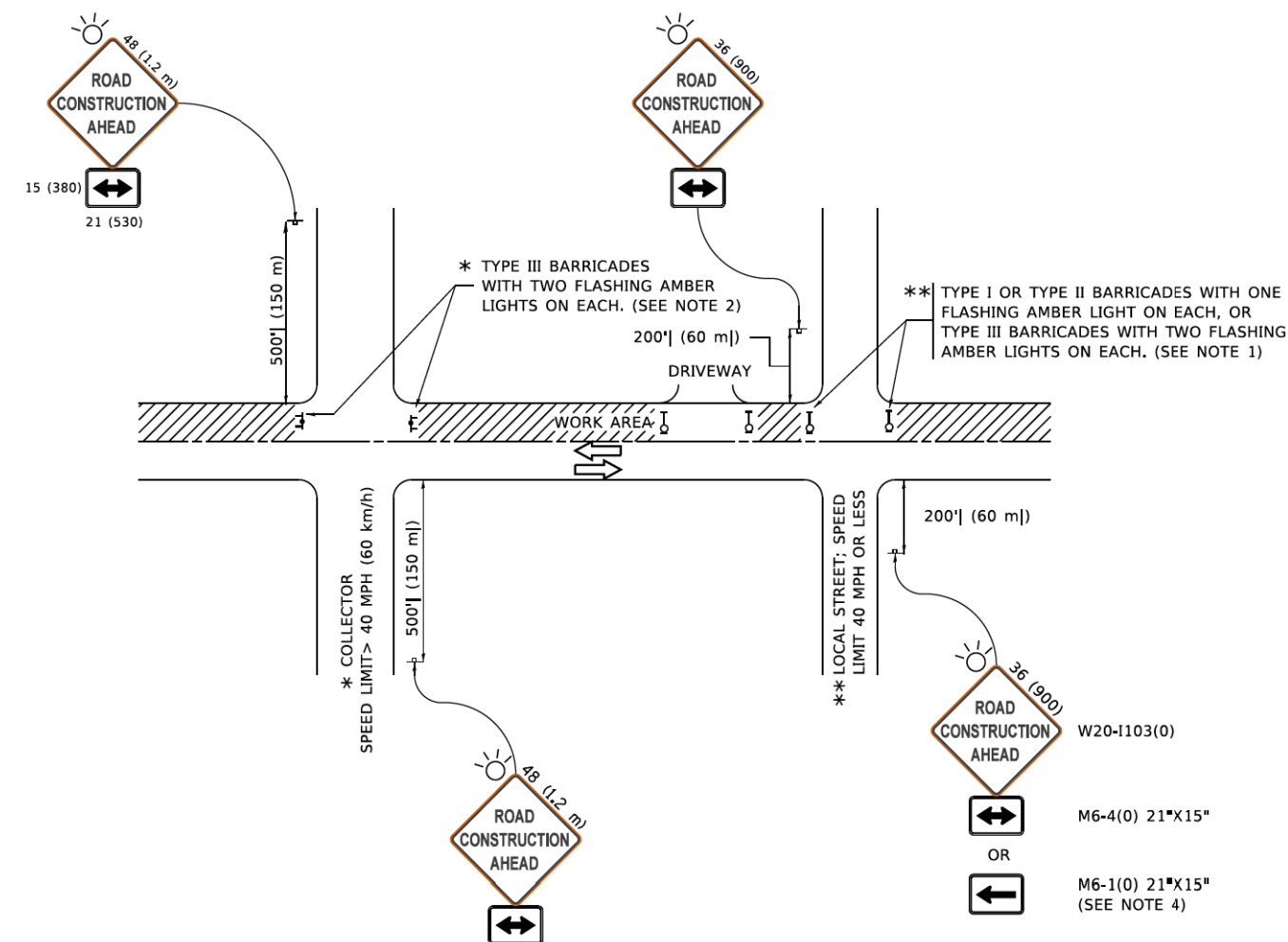
USER NAME = Lawrence,DeManche	DESIGNED - M. DE YONG	REVISED - A. ABBAS 03-21-97
	DRAWN -	REVISED - M. GOMEZ 04-06-01
PLOT SCALE = 100,0000' / in.	CHECKED -	REVISED - R. BORO 01-01-07
PLOT DATE = 11/18/2022	DATE - 06-13-90	REVISED - K. SMITH 11-18-22

STATE OF ILLINOIS  
DEPARTMENT OF TRANSPORTATION

BUTT JOINT AND  
HMA TAPER DETAILS

SCALE: NONE SHEET 1 OF 1 SHEETS STA. TO STA.

F.A.U. RTE.	SECTION	COUNTY	TOTAL SHEETS	SHEET NO.
0360	19-00331-00-SP	KANE	21	17
BD400-05 BD-32			CONTRACT NO. 61J92	
ILLINOIS FED. AID PROJECT				



**NOTES:**

- SIDE ROAD WITH A SPEED LIMIT OF 40 MPH (60 km/h) OR LESS AS SHOWN ON THE DRAWING AND AS DIRECTED BY THE ENGINEER:
  - ONE "ROAD CONSTRUCTION AHEAD" SIGN 36 x 36 (900x900) WITH A FLASHER MOUNTED ON IT APPROXIMATELY 200' (60 m) IN ADVANCE OF THE MAIN ROUTE.
  - THE CLOSED PORTION OF THE MAIN ROUTE SHALL BE PROTECTED BY BLOCKING WITH TYPE I, TYPE II OR TYPE III BARRICADES, 1/3 OF THE CROSS SECTION OF THE CLOSED PORTION.
- SIDE ROAD WITH A SPEED LIMIT GREATER THAN 40 MPH (60 km/h) AS SHOWN ON THE DRAWING AND AS DIRECTED BY THE ENGINEER:
  - ONE "ROAD CONSTRUCTION AHEAD" SIGN 48 x 48 (1.2 m x 1.2 m) WITH A FLASHER MOUNTED ON IT APPROXIMATELY 500' (150 m) IN ADVANCE OF THE MAIN ROUTE.
  - THE CLOSED PORTION OF THE MAIN ROUTE SHALL BE PROTECTED BY BLOCKING WITH TYPE III BARRICADES, 1/2 OF THE CROSS SECTION OF THE CLOSED PORTION.
- CONES MAY BE SUBSTITUTED FOR BARRICADES OR DRUMS AT HALF THE SPACING DURING DAY OPERATIONS. CONES SHALL BE A MINIMUM OF 28 (710) IN HEIGHT.
- WHEN THE SIDE ROAD LIES BETWEEN THE BEGINNING OF THE MAINLINE AND THE WORK ZONE, A SINGLE HEADED ARROW (M6-1) SHALL BE USED IN LIEU OF THE DOUBLE HEADED ARROW (M6-4).
- WHEN WORK IS BEING PERFORMED ON A SIDE ROAD OR DRIVEWAY, FOLLOW THE APPLICABLE STANDARD(S). THE DIRECTIONAL ARROW (M6-1 OR M6-4) SHALL BE COVERED OR REMOVED WHEN NO LONGER CONSISTENT WITH THE TRAFFIC CONTROL SET-UP.
- ADVANCE WARNING SIGNS ARE TO BE OMITTED ON DRIVEWAYS UNLESS OTHERWISE SPECIFIED IN THE PLANS OR BY THE ENGINEER.
- THE TRAFFIC CONTROL AND PROTECTION FOR SIDE ROADS, INTERSECTIONS, AND DRIVEWAYS SHALL BE INCLUDED IN THE COST OF SPECIFIED TRAFFIC CONTROL STANDARDS OR ITEMS.

All dimensions are in inches (millimeters) unless otherwise shown.

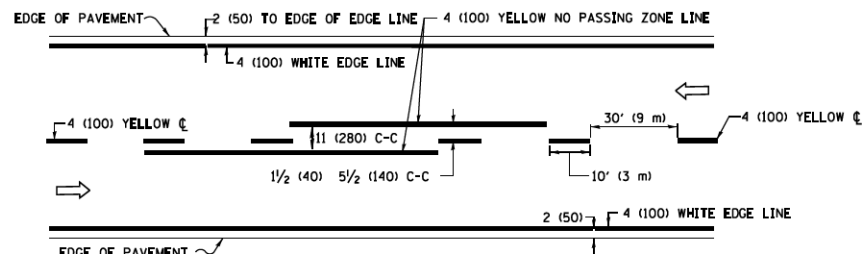
MODEL: D:\draft\...  
 FILE NAME: P:\projects\DOT\Documents\DOT\_Civil\es\DOT\...  
 PROJECT: 19-00331-00-SP

USER NAME	footemj	DESIGNED	L.H.A.	REVISED	A. HOUSEH 10-15-96
DRAWN	-	REVISOR	T. RAMMACHER 01-06-00	REVISED	A. SCHUETZE 07-01-13
PLOT SCALE	50,0000' / in.	CHECKED	-	REVISED	A. SCHUETZE 09-15-16
PLOT DATE	3/4/2019	DATE	06-89	REVISED	-

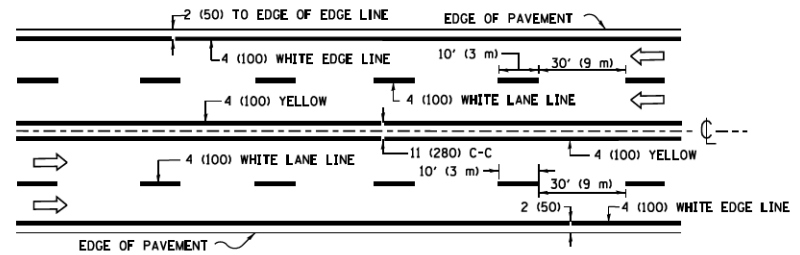
**STATE OF ILLINOIS  
DEPARTMENT OF TRANSPORTATION**

<b>TRAFFIC CONTROL AND PROTECTION FOR SIDE ROADS, INTERSECTIONS, AND DRIVEWAYS</b>			
SCALE: NONE	SHEET 1 OF 1 SHEETS	STA. TO STA.	

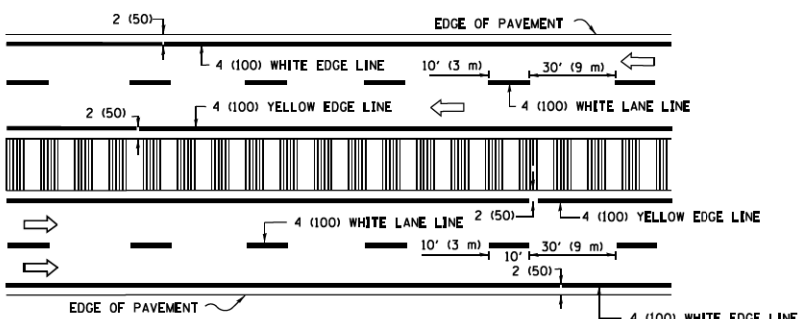
F.A.U. RTE.	SECTION	COUNTY	TOTAL SHEETS	SHEET NO.
0360	19-00331-00-SP	KANE	21	18
<b>TC-10</b>		CONTRACT NO. 61J92		
ILLINOIS FED. AID PROJECT				



**2-LANE ROADWAY**

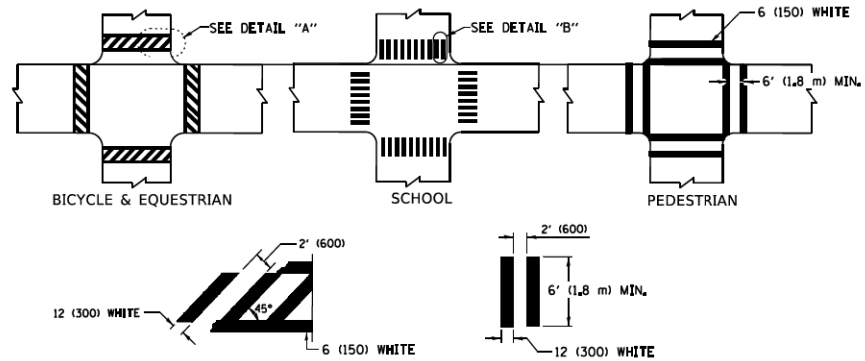


**MULTI-LANE UNDIVIDED**



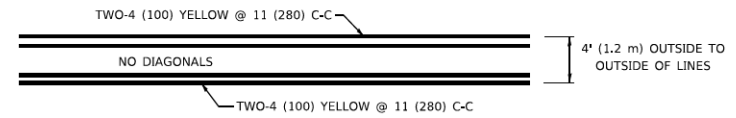
**MULTI-LANE DIVIDED WITH MEDIAN**

**TYPICAL LANE AND EDGE LINE MARKING**

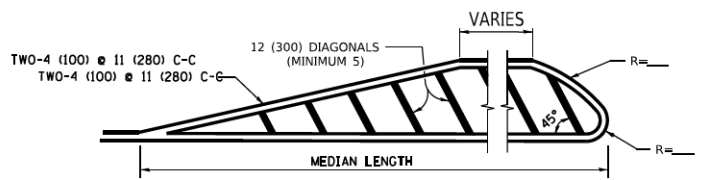


**TYPICAL CROSSWALK MARKING**

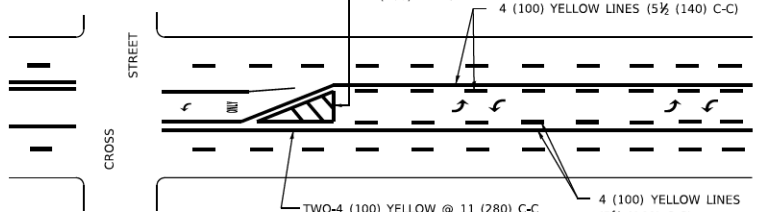
\* MARKINGS SHALL BE INSTALLED PARALLEL TO THE CENTERLINE OF THE ROAD WHICH IT CROSSES



**4' (1.2 m) WIDE MEDIANS ONLY**

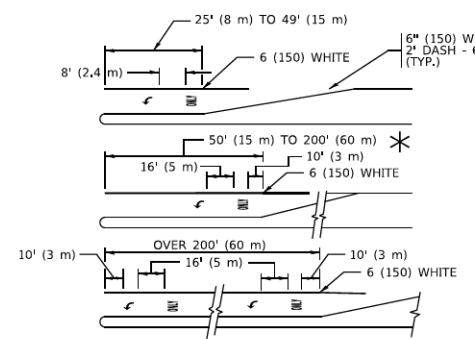


**MEDIANS OVER 4' (1.2 m) WIDE**



**MEDIAN WITH TWO-WAY LEFT TURN LANE  
TYPICAL PAINTED MEDIAN MARKING**

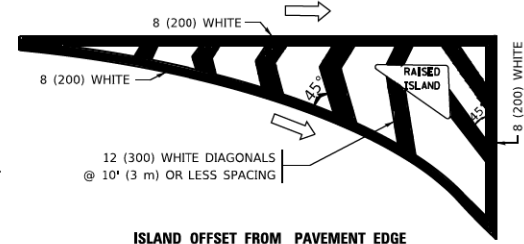
A MINIMUM OF TWO PAIRS OF TURN ARROWS SHALL BE USED, WHITE IN COLOR, ADDITIONAL PAIRS SHALL BE PLACED AT 200' (60 m) TO 300' (90 m) INTERVALS.



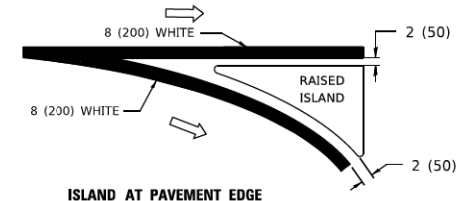
**TYPICAL LEFT (OR RIGHT) TURN LANE**

**TYPICAL TURN LANE MARKING**

FULL SIZE LETTERS 8' (2.4 m) AND ARROWS SHALL BE USED.  
 \* TURN LANES IN EXCESS OF 400' (120 m) IN LENGTH MAY HAVE AN ADDITIONAL SET OF ARROW - "ONLY" INSTALLED MIDWAY BETWEEN THE OTHER TWO SETS OF ARROW - "ONLY".

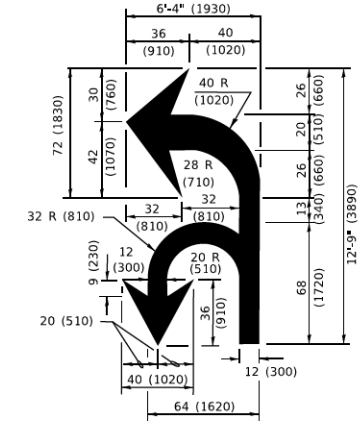


**ISLAND OFFSET FROM PAVEMENT EDGE**

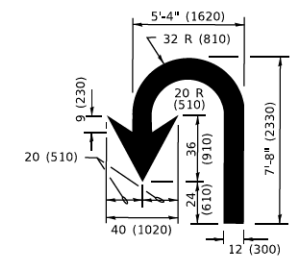


**ISLAND AT PAVEMENT EDGE**

**TYPICAL ISLAND MARKING**



**COMBINATION LEFT AND U-TURN**



**U-TURN**

**LANE REDUCTION TRANSITION**

\* LANE REDUCTION ARROWS REQUIRED AT SPEEDS OF 45 MPH OR GREATER OR WHEN SPECIFIED IN PLANS.

D(FT)	SPEED LIMIT
345	30
425	35
500	40
580	45
665	50
750	55

TYPE OF MARKING	WIDTH OF LINE	PATTERN	COLOR	SPACING / REMARKS
CENTERLINE ON 2 LANE PAVEMENT	4 (100)	SKIP-DASH	YELLOW	10' (3 m) LINE WITH 30' (9 m) SPACE
CENTERLINE ON MULTI-LANE UNDIVIDED PAVEMENT	2 @ 4 (100)	SOLID	YELLOW	11 (280) C-C
NO PASSING ZONE LINES: FOR ONE DIRECTION FOR BOTH DIRECTIONS	4 (100) 2 @ 4 (100)	SOLID SOLID	YELLOW YELLOW	5 1/2 (140) C-C FROM SKIP-DASH CENTERLINE 11 (280) C-C OMIT SKIP-DASH CENTERLINE BETWEEN
LANE LINES	4 (100) 5 (125) ON FREEWAYS	SKIP-DASH SKIP-DASH	WHITE WHITE	10' (3 m) LINE WITH 30' (9 m) SPACE
DOTTED LINES (EXTENSIONS OF CENTER, LANE OR TURN LANE MARKINGS)	SAME AS LINE BEING EXTENDED	SKIP-DASH	SAME AS LINE BEING EXTENDED	2' (600) LINE WITH 6' (1.8 m) SPACE
EDGE LINES	4 (100)	SOLID	YELLOW-LEFT WHITE-RIGHT	OUTLINE MEDIANS IN YELLOW
TURN LANE MARKINGS	6 (150) LINE- FULL SIZE LETTERS & SYMBOLS (8' (2.4m))	SOLID	WHITE	SEE TYPICAL TURN LANE MARKING DETAIL
TWO WAY LEFT TURN MARKING	2 @ 4 (100) EACH DIRECTION 8' (2.4m) LEFT ARROW	SKIP-DASH AND SOLID IN PAIRS	YELLOW WHITE	10' (3 m) LINE WITH 30' (9 m) SPACE FOR SKIP-DASH; 5 1/2 (140) C-C BETWEEN SOLID LINE AND SKIP-DASH LINE SEE TYPICAL TWO-WAY LEFT TURN MARKING DETAIL
CROSSWALK LINES (PEDESTRIAN) A. DIAGONALS (BIKE & EQUESTRIAN) B. LONGITUDINAL BARS (SCHOOL)	2 @ 6 (150) 2 (300) @ 45° 12 (300) @ 90°	SOLID SOLID SOLID	WHITE WHITE WHITE	NOT LESS THAN 6' (1.8 m) APART 2' (600) APART 2' (600) APART SEE TYPICAL CROSSWALK MARKING DETAILS.
STOP LINES	24 (600)	SOLID	WHITE	PLACE 4' (1.2 m) IN ADVANCE OF AND PARALLEL TO CROSSWALK, IF PRESENT, OTHERWISE, PLACE AT DESIRED STOPPING POINT. PARALLEL TO CROSSROAD CENTERLINE, WHERE POSSIBLE
PAINTED MEDIANS	2 @ 4 (100) WITH 12 (300) DIAGONALS @ 45° NO DIAGONALS USED FOR 4' (1.2 m) WIDE MEDIANS	SOLID	YELLOW: TWO WAY TRAFFIC WHITE: ONE WAY TRAFFIC	11 (280) C-C FOR THE DOUBLE LINE SEE TYPICAL PAINTED MEDIAN MARKING.
GORE MARKING AND CHANNELIZING LINES	8 (200) WITH 12 (300) DIAGONALS @ 45°	SOLID	WHITE	DIAGONALS: 15' (4.5 m) C-C (LESS THAN 30MPH (50 km/h)) 20' (6 m) C-C (30 MPH (50 km/h) TO 45MPH (70 km/h)) 30' (9 m) C-C (OVER 45MPH (70 km/h))
RAILROAD CROSSING	24 (600) TRANSVERSE LINES; "RR" 15' 6" (1.8 m) LETTERS; 16 (400) LINE FOR "X"	SOLID	WHITE	SEE STATE STANDARD 780001 AREA OF: "RR"=3.6 SQ. FT. (0.33 m²) EACH "X"=54.0 SQ. FT. (5.0 m²)
SHOULDER DIAGONALS (REQUIRED FOR SHOULDERS > 8')	12 (300) @ 45°	SOLID	WHITE - RIGHT YELLOW - LEFT	50' (15 m) C-C (LESS THAN 30MPH (50 km/h)) 75' (25 m) C-C (30 MPH (50 km/h) TO 45MPH (70 km/h)) 150' (45 m) C-C (OVER 45MPH (70 km/h))
U TURN ARROW	SEE DETAIL	SOLID	WHITE	16.3 SF
2 ARROW COMBINATION LEFT AND U TURN	SEE DETAIL	SOLID	WHITE	30.4 SF

FOR FURTHER DETAILS ON PAVEMENT MARKING REFER TO STANDARD SPECIFICATIONS FOR ROAD AND BRIDGE CONSTRUCTION AND STATE STANDARD 780001.

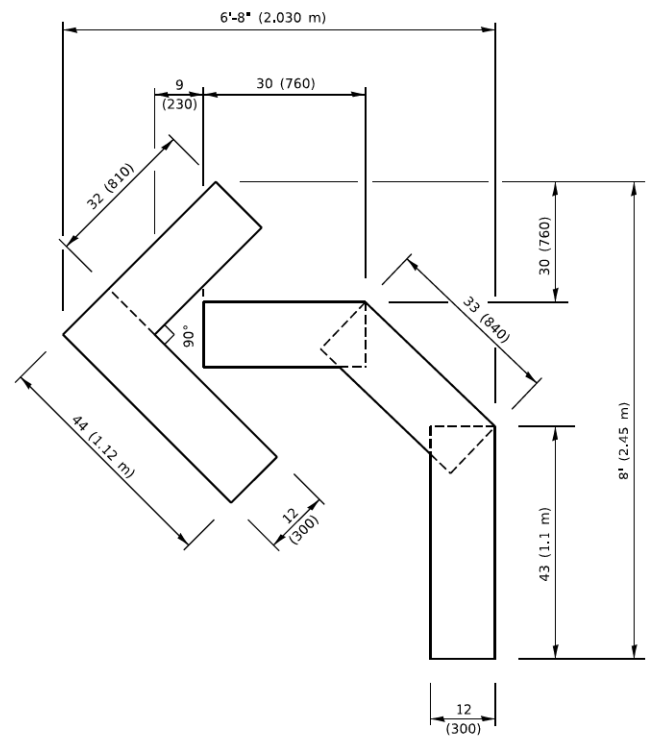
All dimensions are in inches (millimeters) unless otherwise shown.

MODEL: Default  
FILE NAME: P:\PROJECTS\DM\2019\19-00331-00-SP\19-00331-00-SP-TYPICAL PAVEMENT MARKINGS.TXD

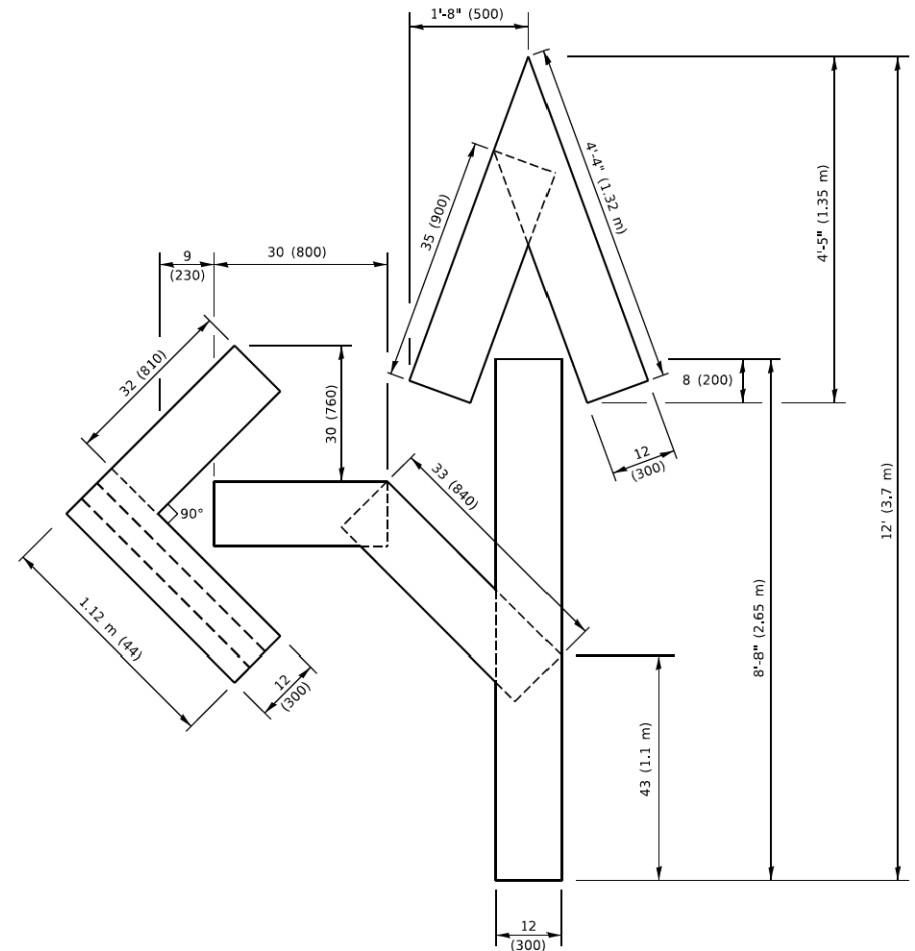
USER NAME - footemj	DESIGNED - EVERS	REVISED - C. JUCIUS 09-09-09
PLOT SCALE - 50,0000' / in.	CHECKED -	REVISED - C. JUCIUS 07-01-13
PLOT DATE - 3/4/2019	DATE - 03-19-90	REVISED - C. JUCIUS 12-21-15
		REVISED - C. JUCIUS 04-12-16

**STATE OF ILLINOIS  
DEPARTMENT OF TRANSPORTATION**

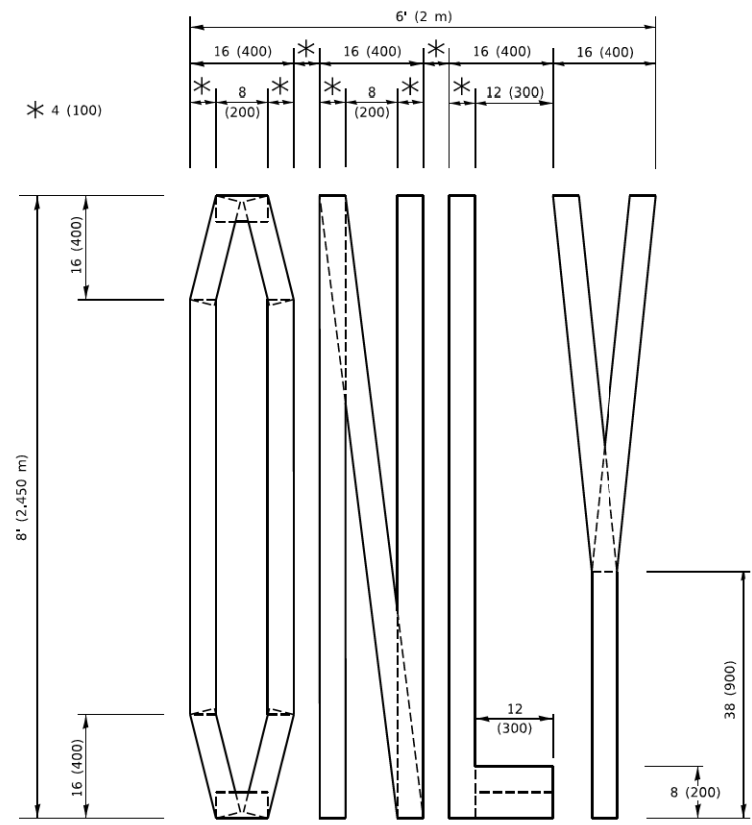
<b>DISTRICT ONE</b>		F.A.U. RTE.	SECTION	COUNTY	TOTAL SHEETS	SHEET NO.
<b>TYPICAL PAVEMENT MARKINGS</b>		0360	19-00331-00-SP	KANE	21	19
SCALE: NONE	SHEET 1 OF 2 SHEETS	TC-13		CONTRACT NO. 61J92		
STA. TO STA.	ILLINOIS FED. AID PROJECT					



**QUANTITY**  
 4 (100) LINE = 45.5 ft. (13.9 m)  
 15.2 sq. ft. (1.41 sq. m)

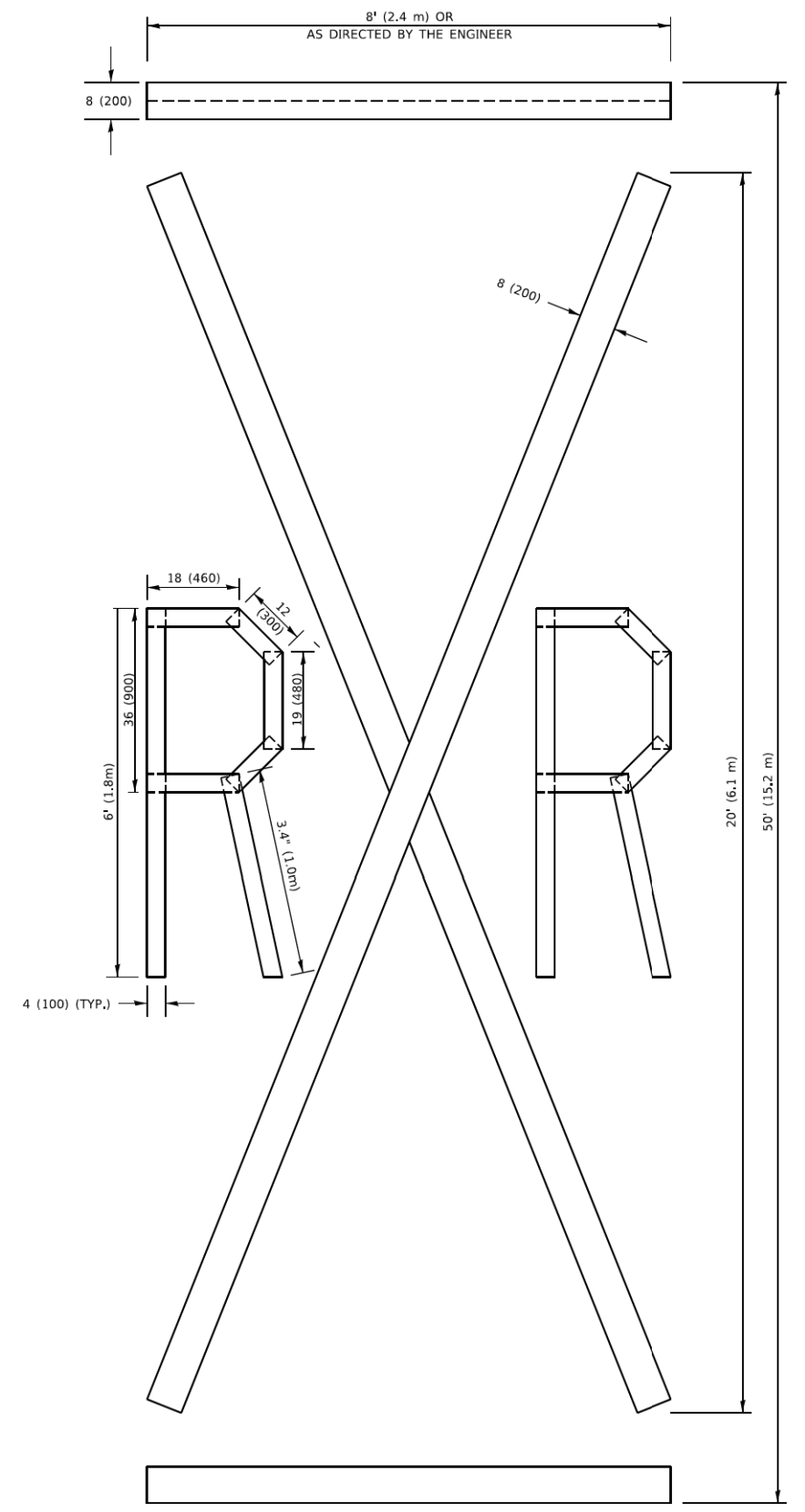


**QUANTITY**  
 4 (100) LINE = 82.5 ft. (25.1 m)  
 27.5 sq. ft. (2.53 sq. m)



**QUANTITY**  
 4 (100) LINE = 64.1 ft. (19.5 m)  
 21.4 sq. ft. (1.99 sq. m)

**NOTE:**  
 ALL QUANTITIES OF PLACEMENT ARE REPRESENTED IN LINEAR FEET OF 4" LINES TO MATCH THE 4" TEMPORARY TAPE PAY ITEM AND REPRESENTS THE TOTAL QUANTITY OF 4" TAPE REQUIRED.



**QUANTITY**  
 4 (100) LINE = 225.9 ft. (68.9 m)  
 75.3 sq. ft. (6.99 sq. m)

All dimensions are in inches (millimeters) unless otherwise shown.

MODEL Default  
 FILE NAME: P:\011048\EBID\ITEC\Illinois.gov\WIDOT\Documents\DOT Offsets\Bairfrt 1\Projects\04542324\CADD\NA\CAD\Sheets\16.dgn

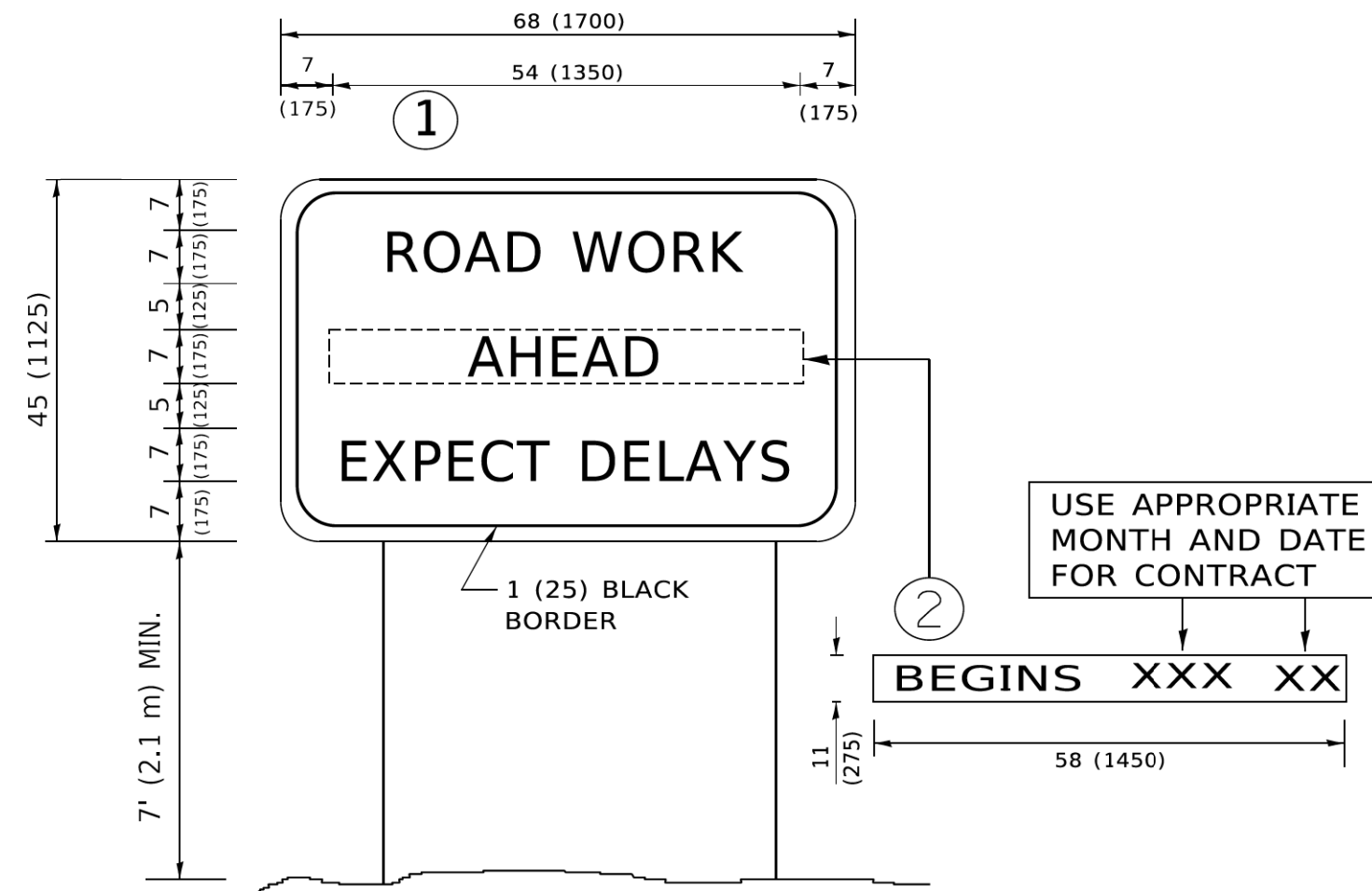
USER NAME = footemj	DESIGNED -	REVISED - T. RAMMACHER 03-02-98
	DRAWN -	REVISED - E. GOMEZ 08-28-00
PLOT SCALE = 50.0068" / in.	CHECKED -	REVISED - E. GOMEZ 08-28-00
PLOT DATE = 3/4/2019	DATE - 09-18-94	REVISED - A. SCHUETZE 09-15-16

**STATE OF ILLINOIS  
 DEPARTMENT OF TRANSPORTATION**

**SHORT TERM PAVEMENT MARKING LETTERS AND SYMBOLS**

SCALE: NONE SHEET 1 OF 1 SHEETS STA. TO STA.

F.A.U. RTE.	SECTION	COUNTY	TOTAL SHEETS	SHEET NO.
0360	19-00331-00-5P	KANE	21	20
<b>TC-16</b>		CONTRACT NO. 61192		
ILLINOIS FED. AID PROJECT				



**NOTES:**

1. USE BLACK LETTERING ON ORANGE BACKGROUND.
2. ERECT SIGNS IN ADVANCE OF THE LOCATION FOR THE "ROAD CONSTRUCTION AHEAD" SIGN AT LOCATIONS AS DIRECTED BY THE ENGINEER.
3. ERECT SIGN ① WITH INSTALLED PANEL ② ONE WEEK PRIOR TO THE START OF CONSTRUCTION.
4. REMOVE PANEL ② SOON AFTER THE START OF CONSTRUCTION.
5. SEE SPECIAL PROVISION FOR "TEMPORARY INFORMATION SIGNING" FOR ADDITIONAL INFORMATION.
6. ONE SIGN ASSEMBLY EQUALS 25.70 SQ. FT. (2.3 SQ. M.)
7. SHALL BE PAID FOR AS TEMPORARY INFORMATION SIGNING.

ALL DIMENSIONS ARE IN INCHES (MILLIMETERS) UNLESS OTHERWISE SHOWN.

MODEL: D:\draft\...  
 FILE NAME: P:\0360\04E8\BID\TEC\Illinois.gov\PNIDOT\Documents\DOT\_Civil\es\B\refc\_1\Projects\BUS\22\23\ACADD\B\CAD\Sheet\TC22.dgn

USER NAME	footemj	DESIGNED	-	REVISED	- R, MIRS 09-15-97
DRAWN	-	CHECKED	-	REVISED	- R, MIRS 12-11-97
PLOT SCALE	50,0000 1 / in.	DATE	-	REVISED	- T. RAMMACHER 02-02-99
PLOT DATE	3/4/2019	DATE	-	REVISED	- C, JUCIUS 01-31-07

**STATE OF ILLINOIS  
DEPARTMENT OF TRANSPORTATION**

**ARTERIAL ROAD  
INFORMATION SIGN**

SCALE: NONE SHEET 1 OF 1 SHEETS STA. TO STA.

F.A.U. RTE.	SECTION	COUNTY	TOTAL SHEETS	SHEET NO.
0360	19-00331-00-5P	KANE	21	21
TC-22			CONTRACT NO. 61J92	
ILLINOIS FED. AID PROJECT				