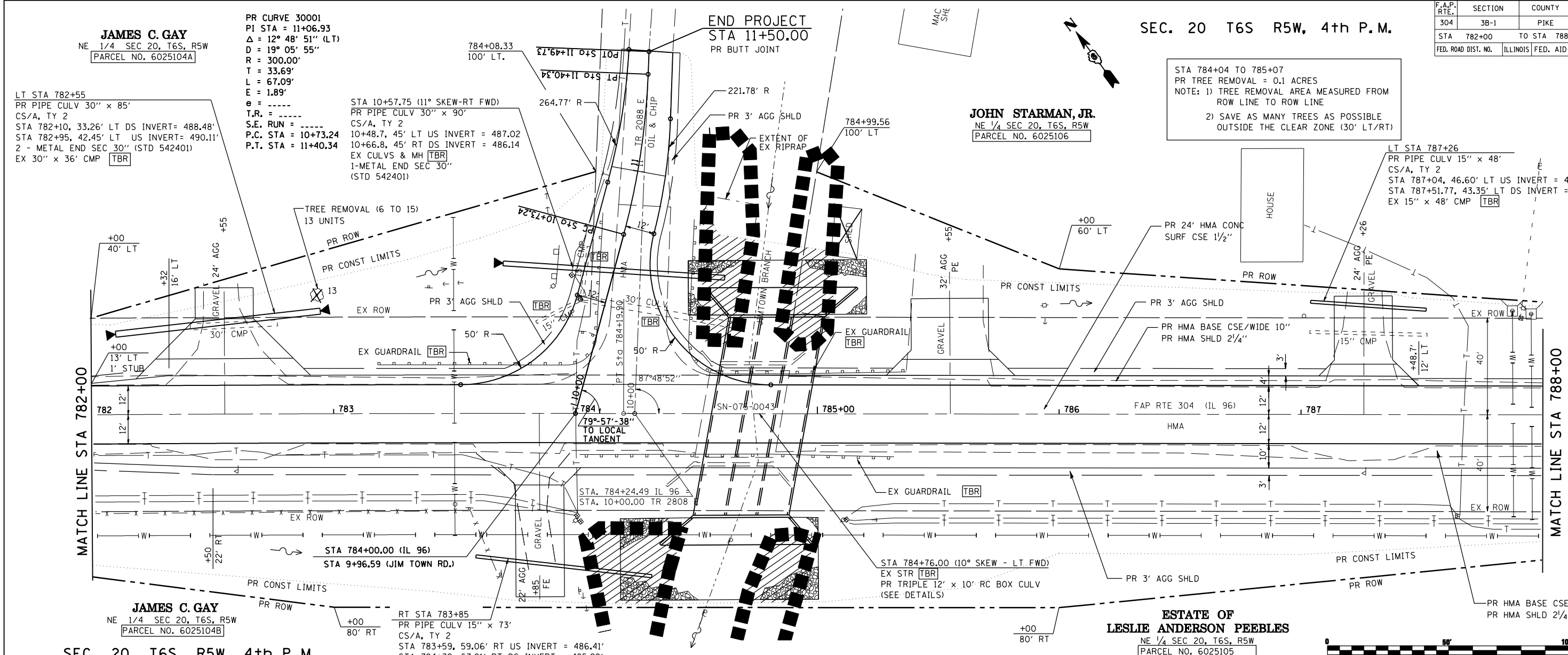


F.A.P. RTE.	SECTION	COUNTY	TOTAL SHEETS	SHEET NO.
304	3B-1	PIKE	51	20

SEC. 20 T6S R5W, 4th P.M.

STA	TO STA
782+00	788+00

FED. ROAD DIST. NO. ILLINOIS FED. AID PROJECT



STA 784+04 TO 785+07
 PR TREE REMOVAL = 0.1 ACRES
 NOTE: 1) TREE REMOVAL AREA MEASURED FROM ROW LINE TO ROW LINE
 2) SAVE AS MANY TREES AS POSSIBLE OUTSIDE THE CLEAR ZONE (30' LT/RT)

LT STA 787+26
 PR PIPE CULV 15" x 48"
 CS/A, TY 2
 STA 787+04, 46.60' LT US INVERT = 486.70'
 STA 787+51.77, 43.35' LT DS INVERT = 486.10'
 EX 15" x 48' CMP TBR

JAMES C. GAY
 NE 1/4 SEC 20, T6S, R5W
 PARCEL NO. 6025104A

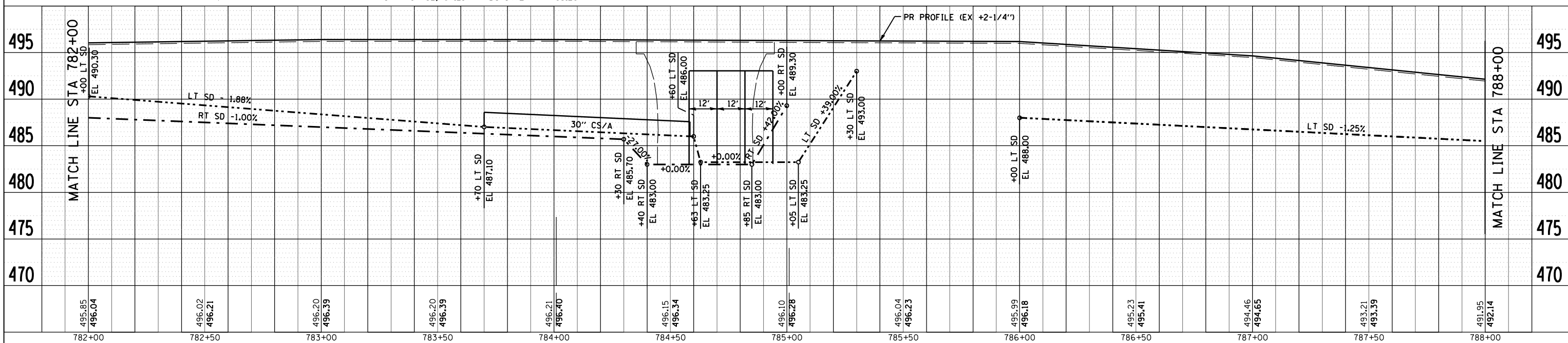
PR CURVE 30001
 PI STA = 11+06.93
 $\Delta = 12^\circ 48' 51''$ (LT)
 $D = 19^\circ 05' 55''$
 $R = 300.00'$
 $L = 33.69'$
 $T = 67.09'$
 $e = 1.89'$
 $T.R. =$
 $S.E. RUN =$
 $P.C. STA = 10+73.24$
 $P.T. STA = 11+40.34$

STA 10+57.75 (11° SKEW-RT FWD)
 PR PIPE CULV 30" x 90"
 CS/A, TY 2
 10+48.7, 45' LT US INVERT = 487.02
 10+66.8, 45' RT DS INVERT = 486.14
 EX CULVS & MH TBR
 1-METAL END SEC 30"
 (STD 542401)

JOHN STARMAN, JR.
 NE 1/4 SEC 20, T6S, R5W
 PARCEL NO. 6025106

JAMES C. GAY
 NE 1/4 SEC 20, T6S, R5W
 PARCEL NO. 6025104B

ESTATE OF LESLIE ANDERSON PEEBLES
 NE 1/4 SEC 20, T6S, R5W
 PARCEL NO. 6025105



TUG PROJ: 6182007-11
 PLOT DATE: AUG-31-2007 11:48:55AM
 FILE NAME: #FILE#