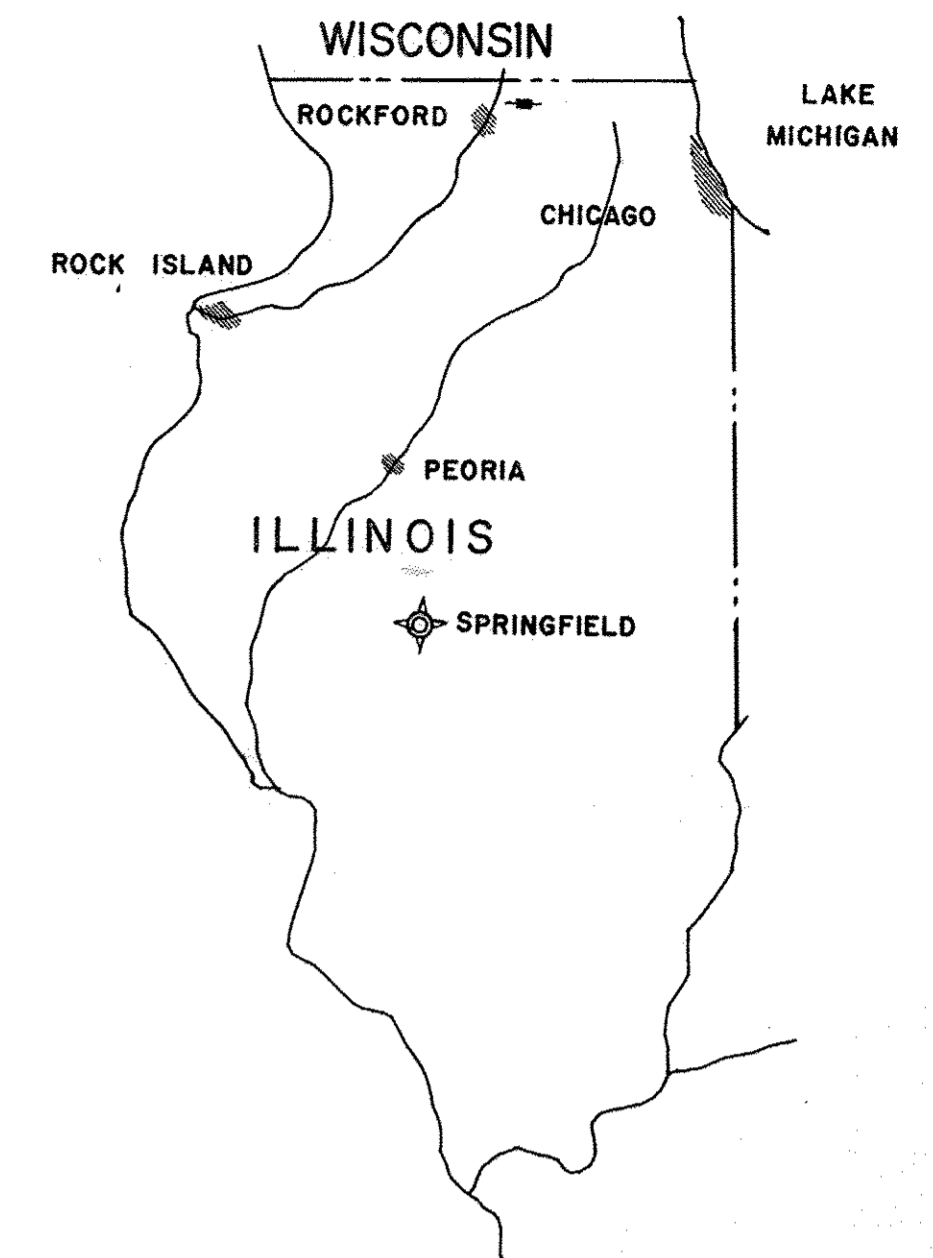


FOR INFORMATION ONLY

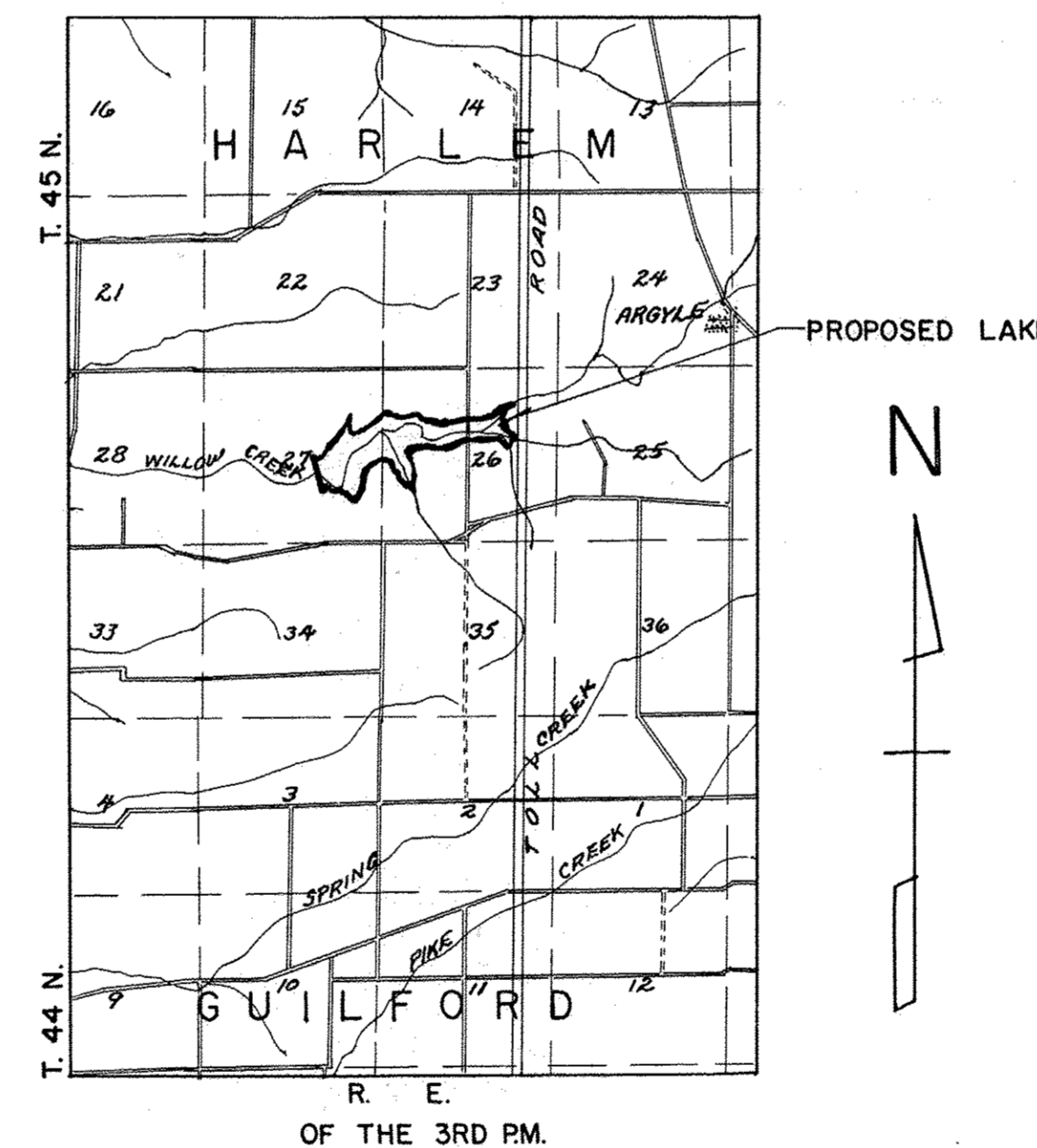
STATE OF ILLINOIS
 DEPARTMENT OF CONSERVATION
 PLANS FOR
PROPOSED EARTH DAM AND SPILLWAY
 WINNEBAGO COUNTY CONSERVATION LAKE
 7 JULY 1959



VICINITY MAP
 NO SCALE

SUMMARY OF QUANTITIES

ITEM NO.	DESCRIPTION	UNIT	ESTIMATED QUANTITY
1	TREE REMOVAL (6" TO 15" DIA.)	IN. DIA.	1,000
2	TREE REMOVAL (OVER 15" DIA.)	IN. DIA.	1,000
3	STRIPPING EXCAVATION	CU. YDS.	9,000
4	ROCK EXCAVATION	CU. YDS.	550
5	BORROW EXCAVATION	CU. YDS.	83,500
6	CHANNEL EXCAVATION	CU. YDS.	30,000
7	UNSUITABLE EXCAVATION	CU. YDS.	2,000
8	EXCAVATION FOR STRUCTURES	CU. YDS.	36,000
9	CLASS A CONCRETE	CU. YDS.	499
10	CLASS X CONCRETE	CU. YDS.	2,289
11	REINFORCEMENT BARS	LBS.	185,859
12	DRILLING HOLES FOR GROUTING	LIN. FT.	1,000
13	GROUTING PIPES - 2 1/2"	LIN. FT.	612
14	EQUIPMENT, LABOR & MATERIALS FOR GROUTING	SACKS CEM.	2,640
15	REINFORCED CONCRETE PIPE - 48"	LIN. FT.	142
16	REINFORCED CONCRETE WATER PIPE - 24"	LIN. FT.	85
17	POROUS GRANULAR BACKFILL	CU. YDS.	1,835
18	DUMPED STONE RIPRAP - LOCAL SOURCE	CU. YDS.	946
19	DUMPED STONE RIPRAP - OUTSIDE SOURCE	CU. YDS.	1,292
20	HAND LAID STONE RIPRAP - LOCAL SOURCE	CU. YDS.	24
21	CAST IRON & MISC. METAL	LBS.	5,900
22	TILE UNDERDRAINS	LIN. FT.	574
23	STEEL PIPE RAILING	LIN. FT.	429
24	GATE & HOISTING MECHANISM	EACH	1
25	COMPLETE SEEDING	ACRES	11
26	MULCH COVERING	ACRES	6
27	FERTILIZER NUTRIENTS	TONS	0.55
28	COPPER SEALED EXPANSION JOINTS	LIN. FT.	1,140
29	FILTER BLANKET	CU. YDS.	2,250
30	COARSE GRAVEL FILL (COMPACTED)	CU. YDS.	328



LOCATION MAP
 SCALE 1"=62500

INDEX OF SHEETS

SHEET NO.	TITLE
1	COVER SHEET
2	SITE PLAN - LAKE
3	DAM SITE CONTOUR MAP
4	TEST BORING LOGS
5	TYPICAL SECTION AT DEWATERING STRUCTURE
6	AUXILIARY SPILLWAY & DEWATERING FACILITIES
7	STILLING BASIN FOR AUXILIARY SPILLWAY
8	PRINCIPAL SPILLWAY - HALF PLAN AND SECTIONS
9	PRINCIPAL SPILLWAY - SECTIONS AND DETAILS
10	SPILLWAY DETAILS AND S.A.F. STILLING BASIN
11	Ogee SECTIONS AND DETAILS
12	PLAN VIEW OF SPILLWAY APPROACH
13	PRINCIPAL SPILLWAY APPROACH WALLS
14	CONCRETE GUTTER SECTIONS AND DETAILS
15, 16, 17	CROSS SECTIONS - DAM AXIS
18, 19, 20	CROSS SECTIONS - PRINCIPAL SPILLWAY
21, 22	CROSS SECTIONS - EMERGENCY SPILLWAY
23	ALTERNATE DEWATERING FACILITY
24, 25, 26	PRINCIPAL SPILLWAY - STRUCTURAL DETAILS

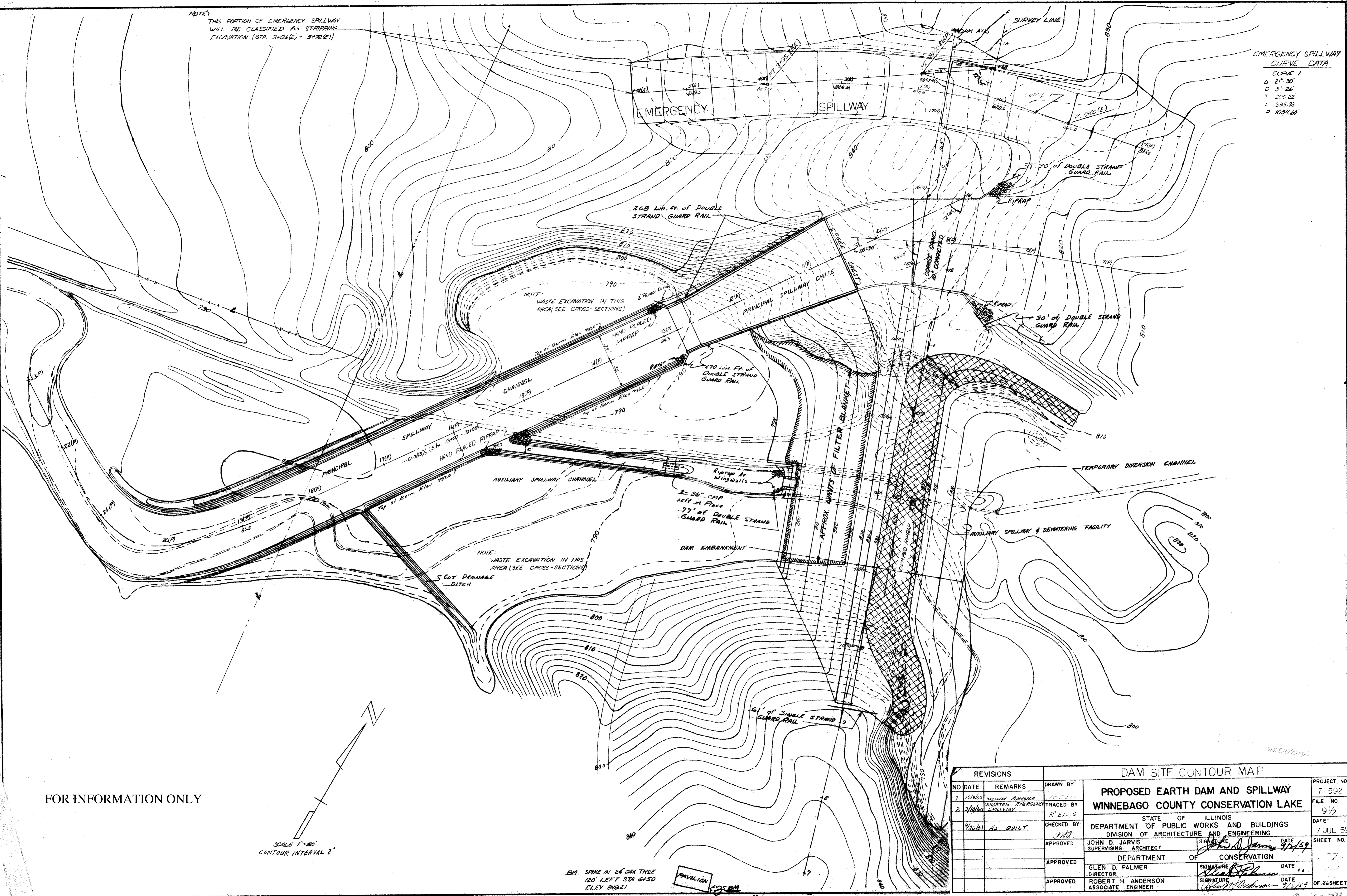
STATE OF ILLINOIS
 COOPERATIVE DEVELOPMENT PROJECT
 DEPARTMENT OF CONSERVATION
 GLEN D. PALMER, DIRECTOR
 AND
 U.S. FISH AND WILDLIFE SERVICE
 DINGELL-JOHNSON FEDERAL AID PROJECT

REVISED
OCT. 9, 1959
PREVIOUS PRINTS VOID

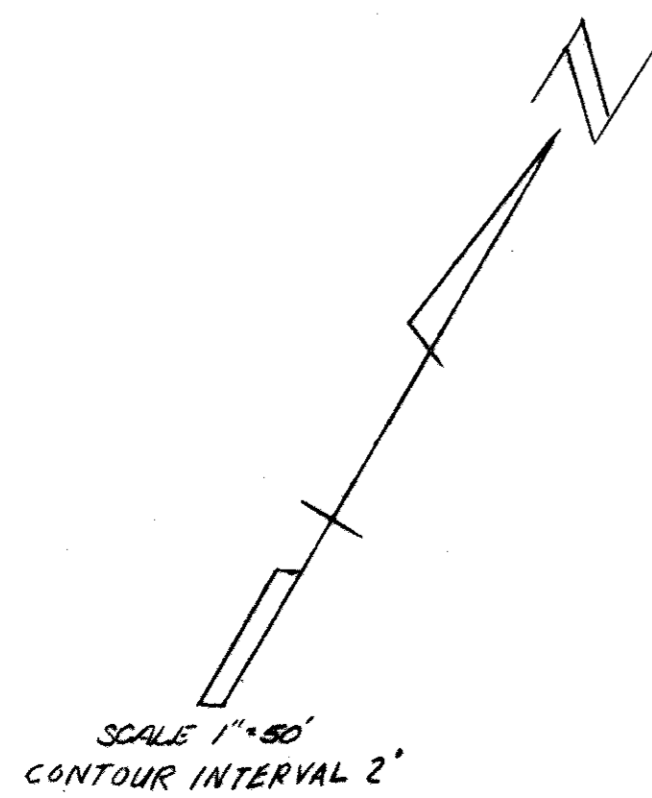
REVISIONS			COVER SHEET		
NO.	DATE	REMARKS	DRAWN BY	PROJECT NO.	
1	10/9/59	Summary of Quantities	B. J. B.	7-592	
			TRACED BY	FILE NO.	
			A. E.	9 1/2	
			CHECKED BY	DATE	
			M. A.	7 JUL 59	
			APPROVED	SHEET NO.	
			JOHN D. JARVIS	1	
			SUPERVISING ARCHITECT	OF 26 SHEETS	
			APPROVED		
			GLEN D. PALMER		
			DIRECTOR		
			APPROVED		
			ROBERT H. ANDERSON		
			ASSOCIATE ENGINEER		

NOTE:
THIS PORTION OF EMERGENCY SPILLWAY
WILL BE CLASSIFIED AS STRIPPING
EXCAVATION (STA 3+96(E) - 5+72(E))

EMERGENCY SPILLWAY
CURVE DATA
CURVE 1
Δ 21° 30'
D 5° 26'
T 200.22'
L 395.73'
R 1054.60'



FOR INFORMATION ONLY



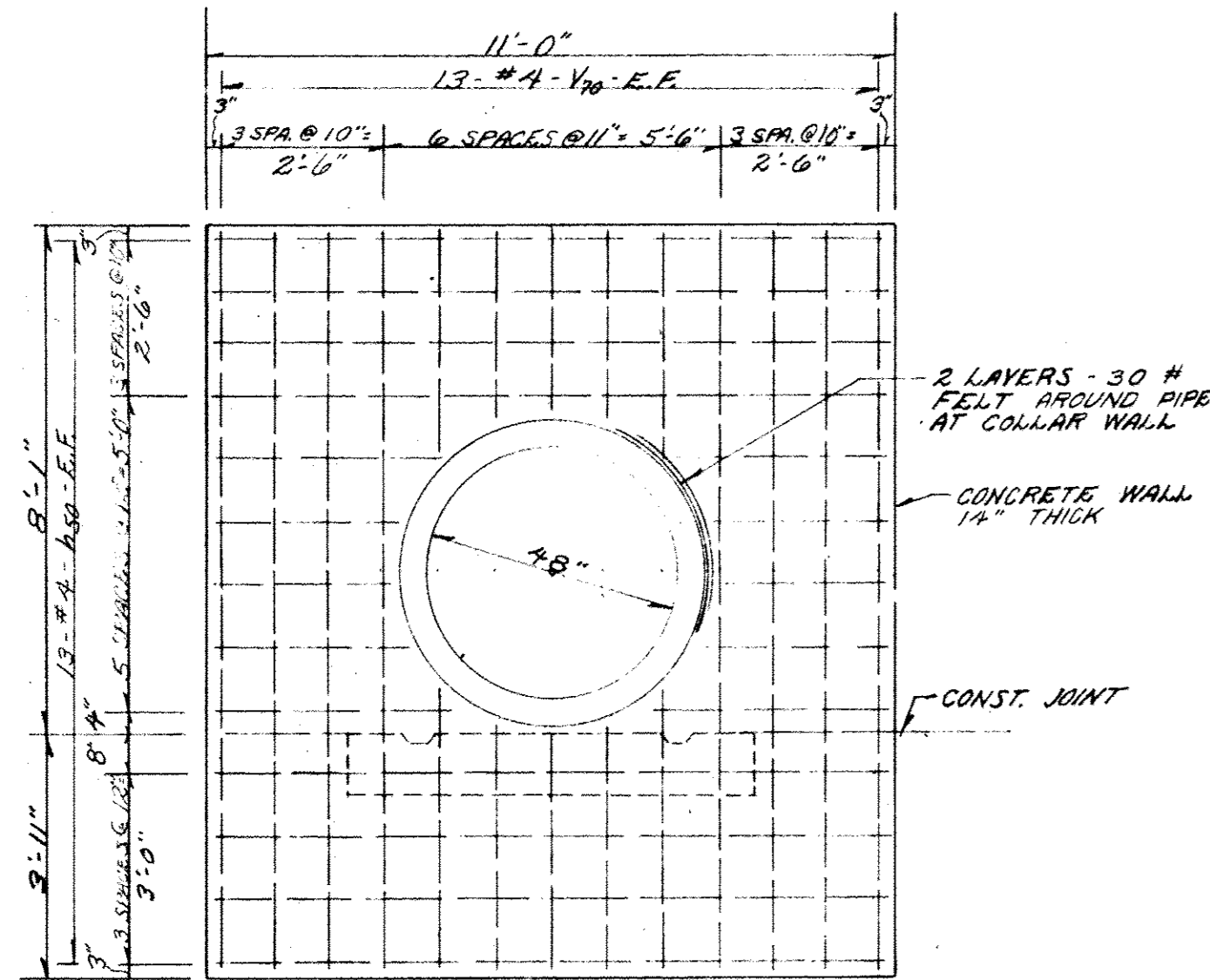
EM. SPIKE IN 24\"/>

PAVILION

REVISIONS			DAM SITE CONTOUR MAP		
NO.	DATE	REMARKS	DRAWN BY		
1	10/9/59	SPILLWAY APPROACH	R.E.H.S.	PROJECT NO. 7-592	
2	3/10/60	SHORTEN EMERGENCY SPILLWAY	R.E.H.S.	FILE NO. 9 1/2	
	4/26/61	AS BUILT		DATE 7 JUL 59	
			CHECKED BY	SHEET NO. 3	
			APPROVED	OF 26 SHEETS	
			APPROVED	<p>STATE OF ILLINOIS DEPARTMENT OF PUBLIC WORKS AND BUILDINGS DIVISION OF ARCHITECTURE AND ENGINEERING</p> <p>JOHN D. JARVIS SUPERVISING ARCHITECT</p> <p>DATE 8/2/59</p>	
			APPROVED	<p>DEPARTMENT OF CONSERVATION</p> <p>GLEN D. PALMER DIRECTOR</p> <p>DATE</p>	
			APPROVED	<p>ROBERT H. ANDERSON ASSOCIATE ENGINEER</p> <p>DATE 9/2/59</p>	

ROCO24C

NOTE: REINFORCING BARS SHALL BE CUT AND/OR BENT IN FIELD AROUND PIPES AND OPENINGS AS DIRECTED BY THE ENGINEER.

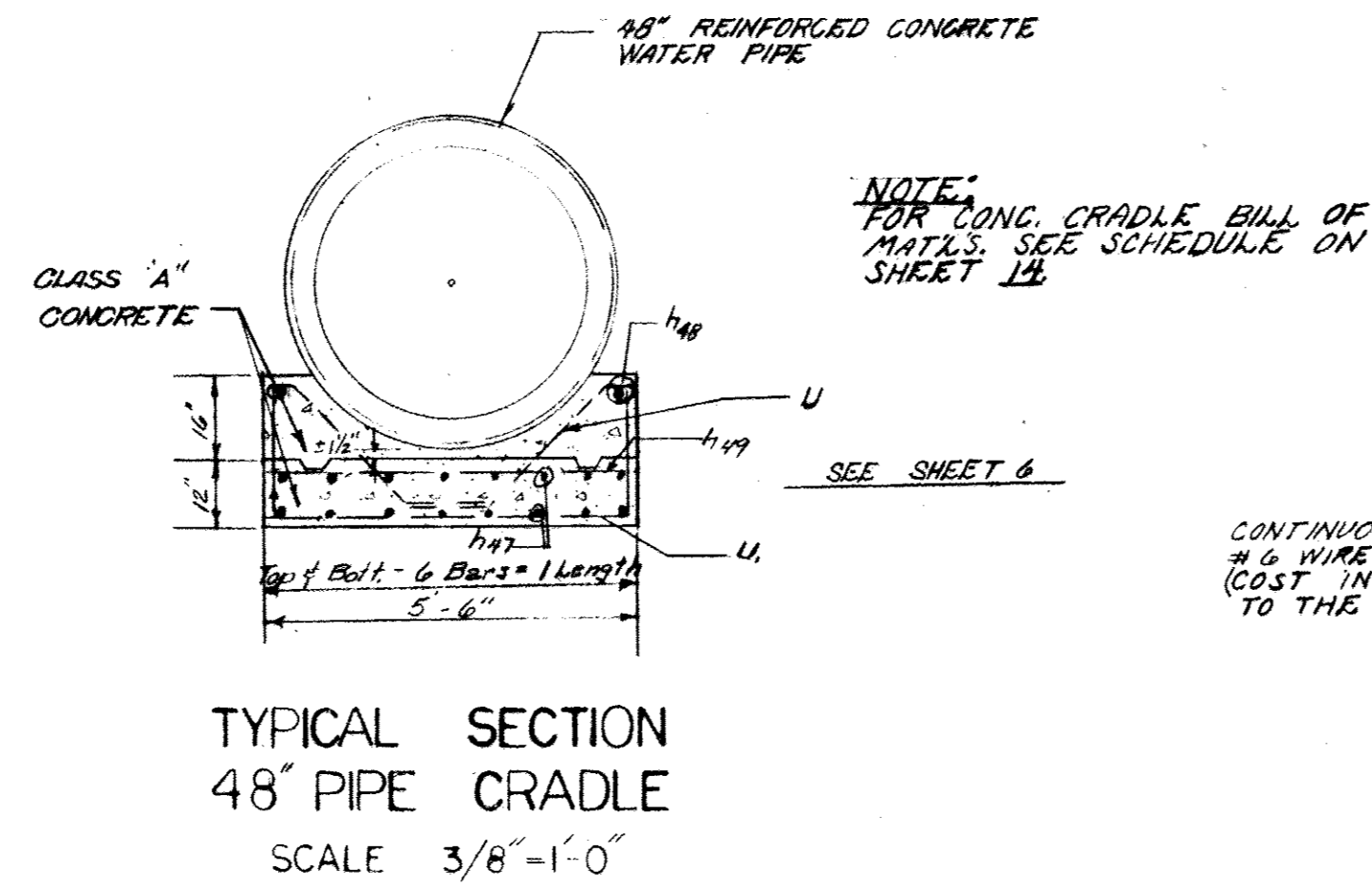


ANTISEEP COLLAR
SCALE 3/8"=1'-0"

BILL OF MATERIALS

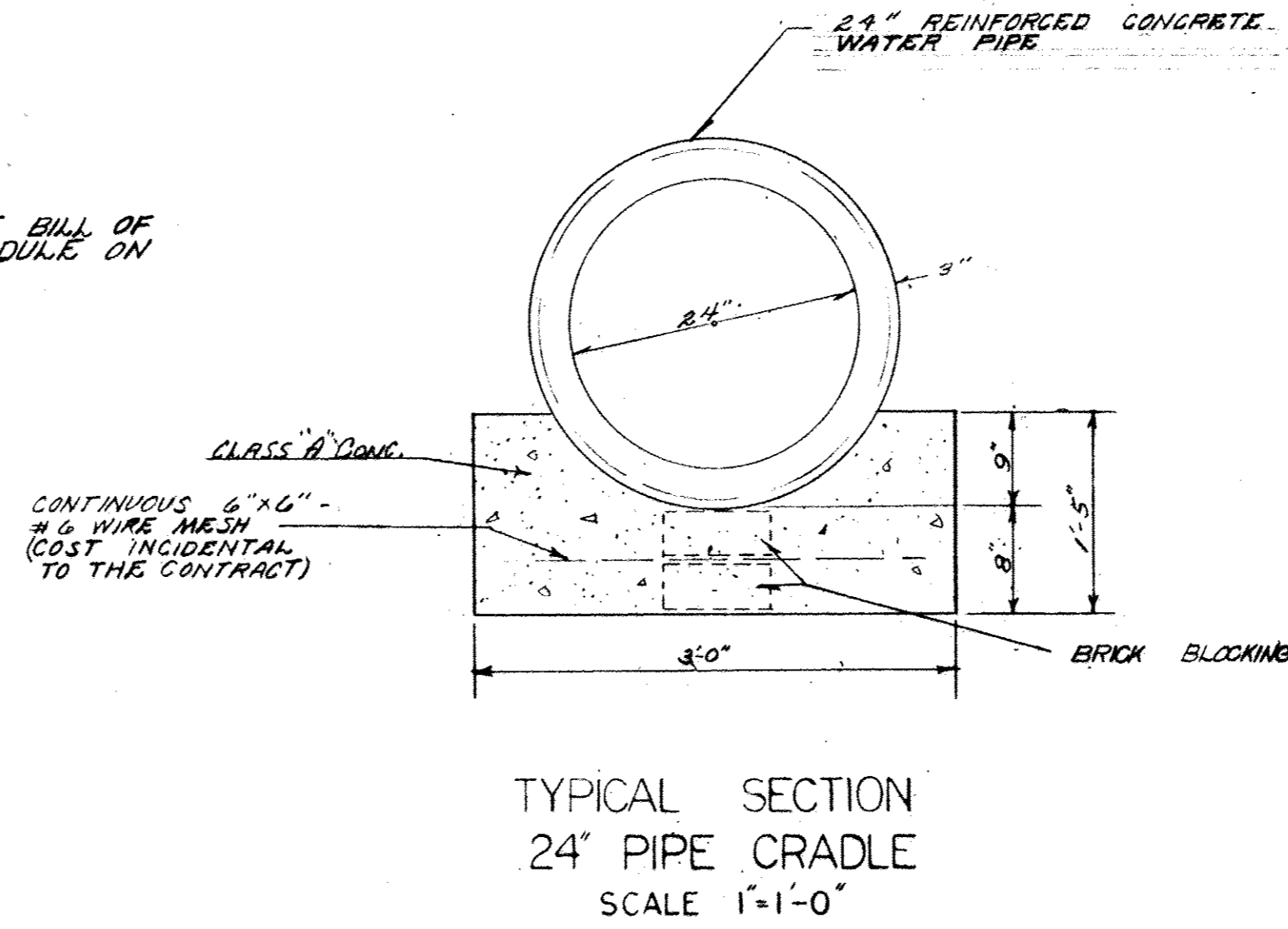
BAR	NO.	SIZE	LENGTH	SHAPE
M50	78	#4	10'-9"	
V70	78	#4	11'-9"	
CLASS X CONCRETE CU.YDS.				14.8
REINFORCEMENT BARS LBS.				1160

SEE ABOVE.

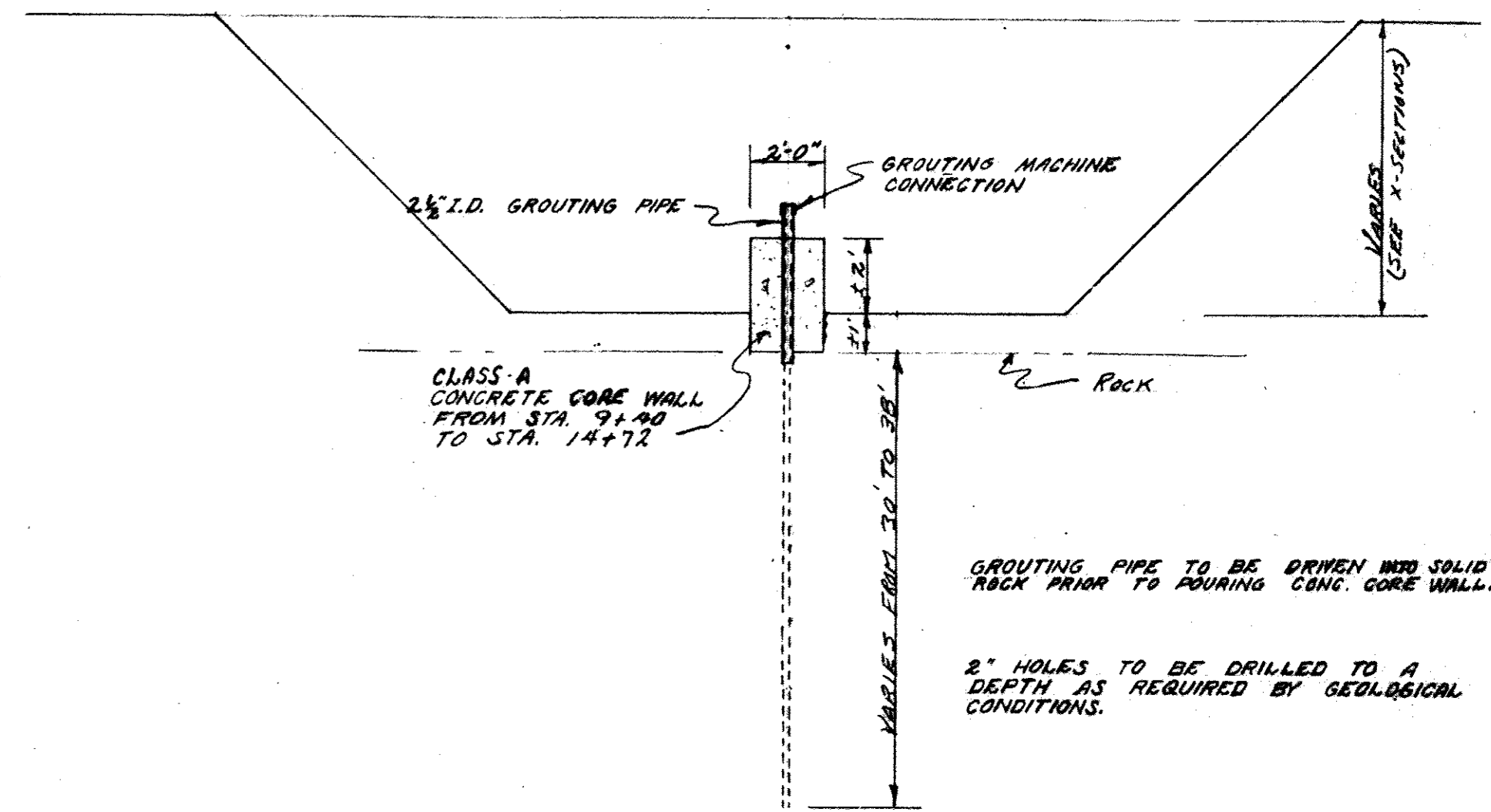


TYPICAL SECTION
48" PIPE CRADLE
SCALE 3/8"=1'-0"

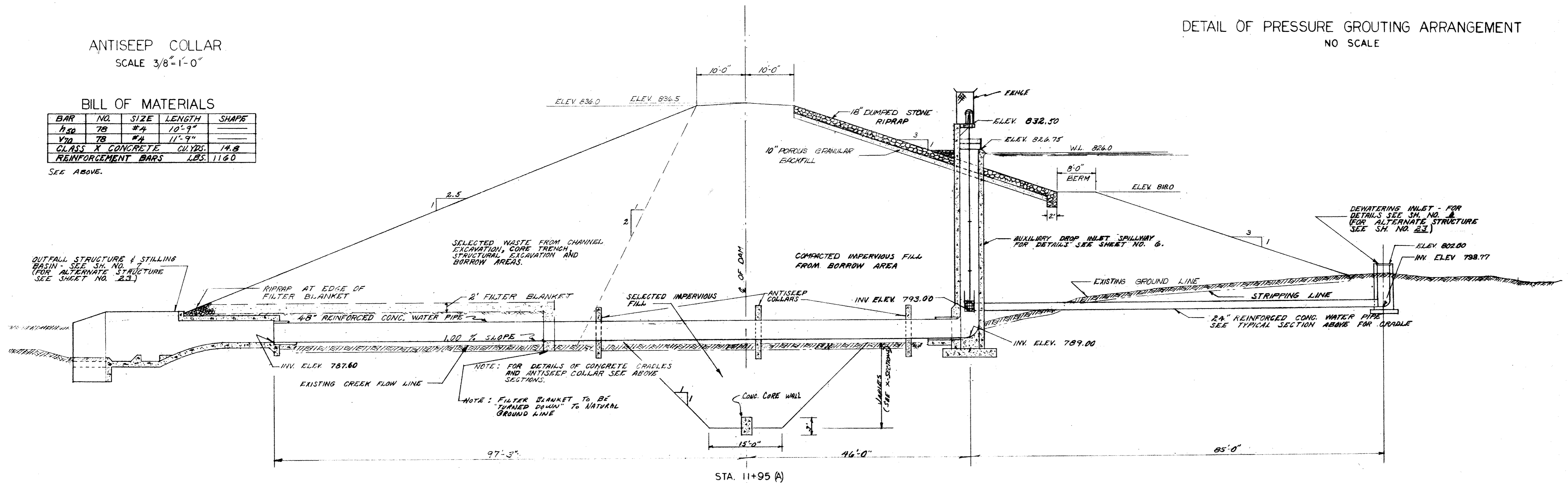
NOTE: FOR CONG. CRADLE BILL OF MAT'L'S. SEE SCHEDULE ON SHEET 14.



TYPICAL SECTION
24" PIPE CRADLE
SCALE 1'-1'-0"



DETAIL OF PRESSURE GROUTING ARRANGEMENT
NO SCALE



TYPICAL SECTION-AT DEWATERING STRUCTURE
SCALE 1'-10'-0"

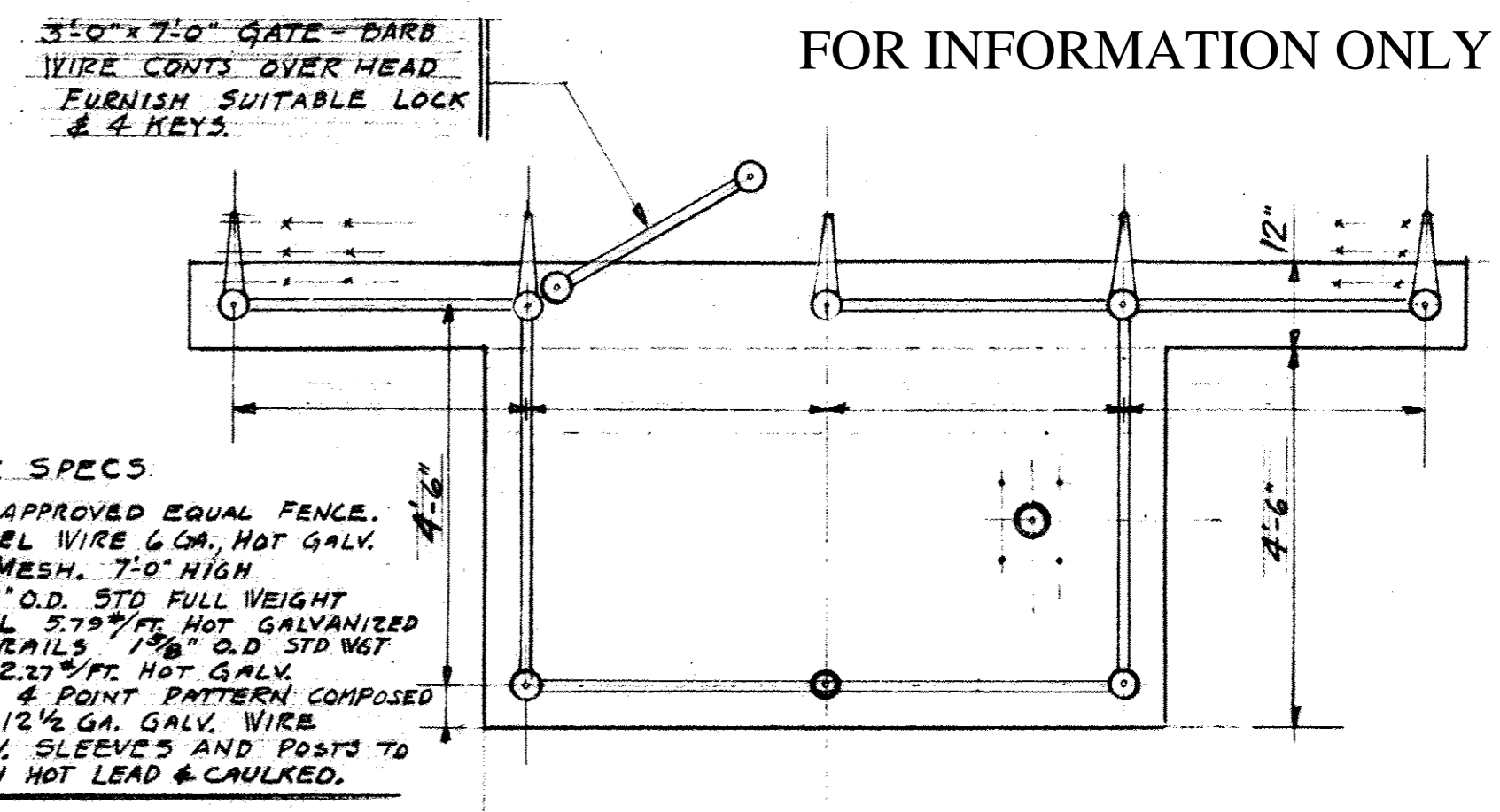
GENERAL NOTES:

- UNLESS OTHERWISE NOTED ALL REINFORCEMENT SHALL BE PLACED AS SPECIFIED IN THE LATEST PUBLICATION OF THE A.C.I. BUILDING CODE.
- USE CLASS X CONCRETE THROUGHOUT UNLESS OTHERWISE NOTED.
- REINFORCEMENT BARS SHALL BE CUT AND/OR BENT IN THE FIELD AROUND PIPES AND OPENINGS AS DIRECTED BY THE ENGINEER.
- THE FOLLOWING ABBREVIATIONS IN STEEL NOTATIONS ARE USED THROUGHOUT:
E.F. - EACH FACE
I.F. - INSIDE FACE
O.F. - OUTSIDE FACE
B.W. - EACH WAY

REVISIONS		TYPICAL SECTION AT DEWATERING STRUCTURE	
NO.	DATE	REMARKS	DRAWN BY
1	1/19/59	24" & 48" CRADLES	TRACED BY
1	10/1/53	DEWATERING INLET	NSR
1	10/1/53	BACKFILL & RIPRAP	NSR
1	6/20/61	AS BUILT	

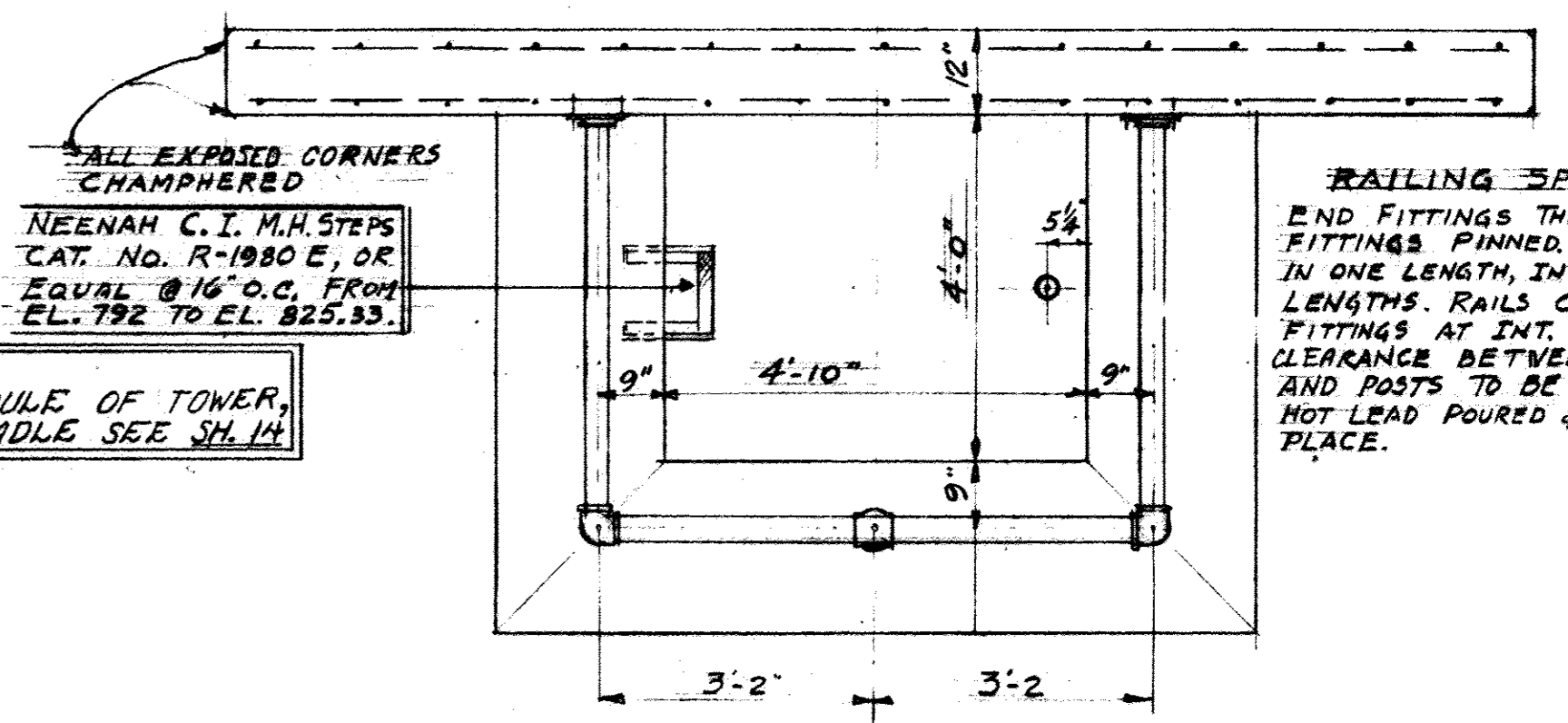
PROPOSED EARTH DAM AND SPILLWAY WINNEBAGO COUNTY CONSERVATION LAKE		PROJECT NO. 7-592
STATE OF ILLINOIS DEPARTMENT OF PUBLIC WORKS AND BUILDINGS DIVISION OF ARCHITECTURE AND ENGINEERING		FILE NO. 312
JOHN D. JARVIS SUPERVISING ARCHITECT		DATE 7 JUL 59
DEPARTMENT OF CONSERVATION		SHEET NO. 5
GLEN D. PALMER DIRECTOR		DATE 7/1/59
ROBERT H. ANDERSON ASSOCIATE ENGINEER		DATE 7/1/59

FOR INFORMATION ONLY



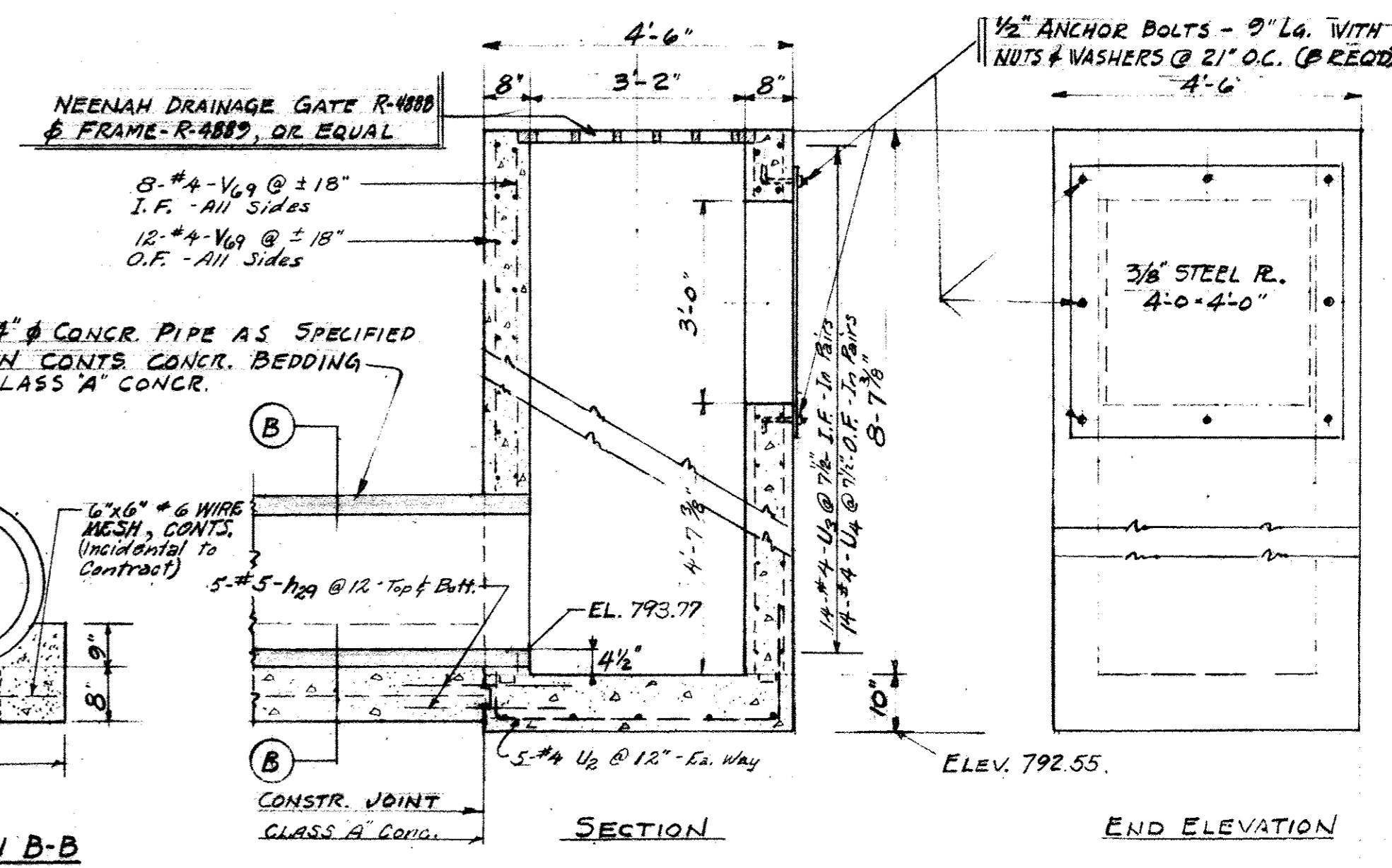
FENCE SPECS.
 CYCLONE OR APPROVED EQUAL FENCE. CHAIN LINK STEEL WIRE 6 GA. HOT GALV. WOVEN IN 2" MESH. 7'0" HIGH. POSTS TO BE 3" O.D. STD FULL WEIGHT TUBULAR STEEL 57.99 FT. HOT GALVANIZED TOP & BOTTOM RAILS 1 1/2" O.D. STD WGT. TUBULAR STEEL 2.27 FT. HOT GALV. BARBED WIRE OF 4 POINT PATTERN COMPOSED OF TWO STRAND 12 1/2 GA. GALV. WIRE. CLEARANCE BETW. SLEEVES AND POSTS TO BE PAURED WITH HOT LEAD & CAULKED.

PLAN OF TOP SLAB
 SCALE 1/2" = 1'-0"



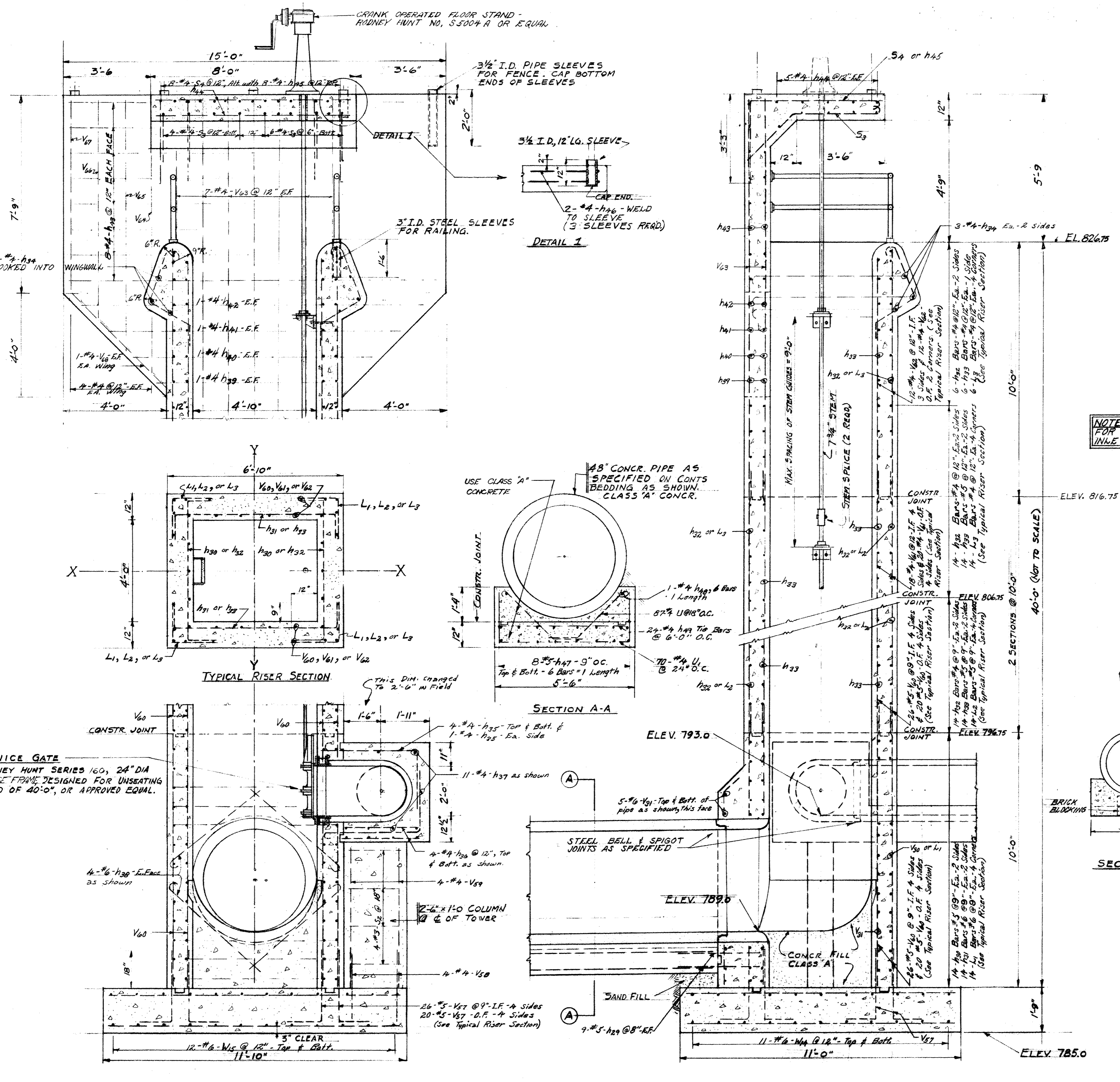
PLAN OF RISER TOP

NOTE:
 FOR STEEL SCHEDULE OF TOWER, INLET & CONC. CRADLE SEE SH. 14.



DEWATERING INLET
 SCALE 1/2" = 1'-0"

GENERAL NOTES:
 ALL REINFORCEMENT SHALL BE SET 1/2" CLEAR OF CONCR. FACE UNLESS OTHERWISE INDICATED.
 CONSTRUCTION JOINTS SHOWN ARE REQUIRED. OTHER JOINTS WILL BE ALLOWED ON APPROVAL OF ENGINEER.
 CONTRACTOR SHALL SUBMIT FOR APPROVAL, SHOP DRAWINGS SHOWING SLUICE GATE GUIDE BRACKETS, STEEL SPLICES, FLOOR STAND, ANCHOR BOLT SETTINGS ETC.
 ALL CONCRETE SHOWN ON THIS SHEET SHALL BE CLASS 'X' EXCEPT AS SHOWN



NOTE:
 THIS SHEET BECOMES VOID IF ALTERNATE DEWATERING STRUCTURE IS SELECTED.

REVISIONS			AUXILIARY SPILLWAY & DEWATERING FACILITIES		
NO.	DATE	REMARKS	DRAWN BY	PROJECT NO.	
1	10/15/59	DEWATERING INLET	CET	7-592	
2	10/15/59	24" CONCR. CRADLE	TRACED BY	FILE NO.	9/2
			CET	DATE	7 JUL 59
			CHECKED BY	SHEET NO.	6
			BJG		
			APPROVED		
			JOHN D. JARVIS		
			SUPERVISING ARCHITECT		
			APPROVED		
			GLEN D. PALMER		
			DIRECTOR		
			APPROVED		
			ROBERT H. ANDERSON		
			ASSOCIATE ENGINEER		

NOTE: For Structural Design of Wall & Footing see sheets No. 25 & 26

SEE SH. NO. 9

SEE SHEET NO. 11

SEE SHEET MAIN

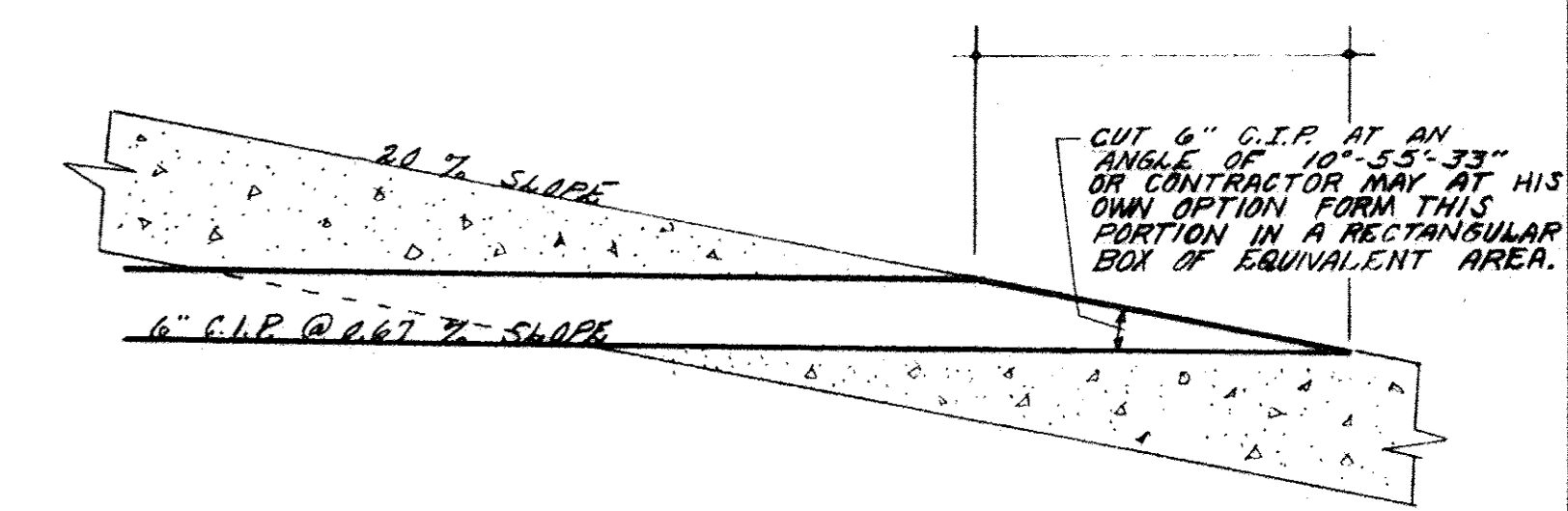
SEE SHEET NO. 11

HALF PLAN OF SPILLWAY
SYMMETRICAL ABOUT C & EXCEPT EXCLUDE C.I.P. OUTLETS
SCALE 1/4" = 1'-0"

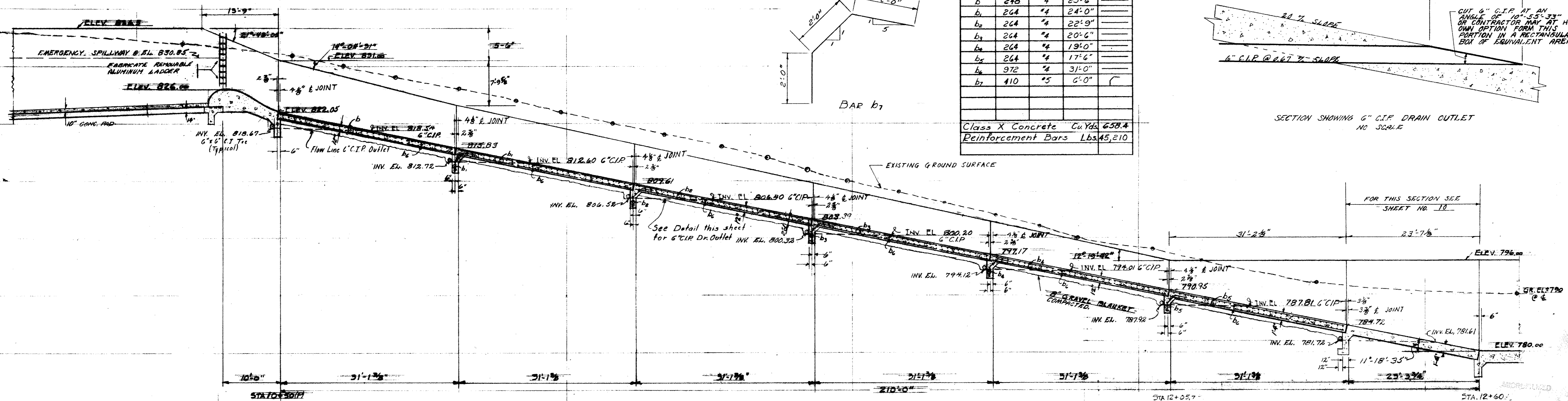
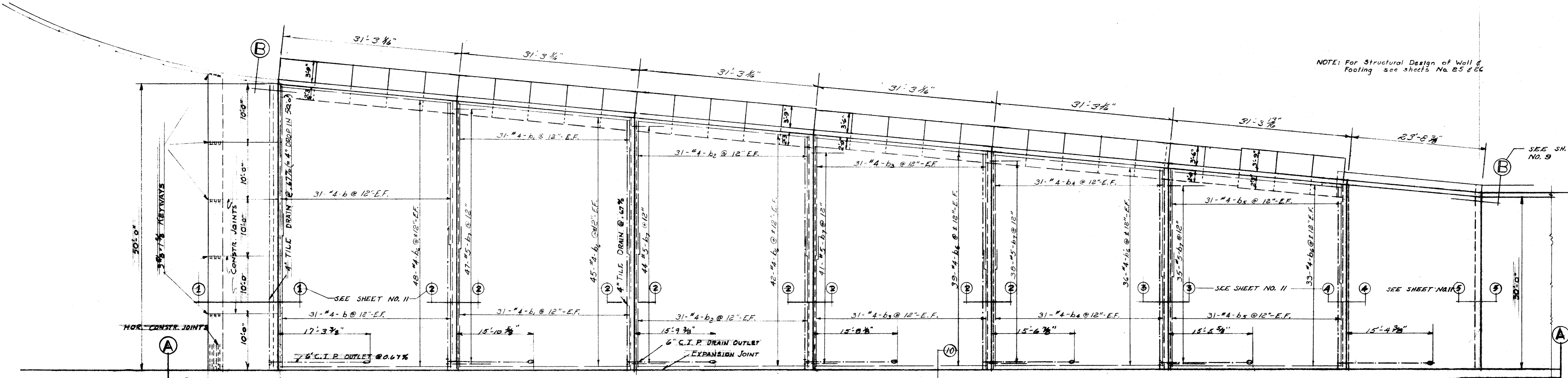
BILL OF MATERIALS - FLOOR SLAB

BAR	No.	SIZE	LENGTH	SHAPE
b	248	#4	25'-6"	
b ₁	264	#4	24'-0"	
b ₂	264	#4	22'-9"	
b ₃	264	#4	20'-6"	
b ₄	264	#4	19'-0"	
b ₅	264	#4	17'-6"	
b ₆	972	#4	31'-0"	
b ₇	410	#5	6'-0"	

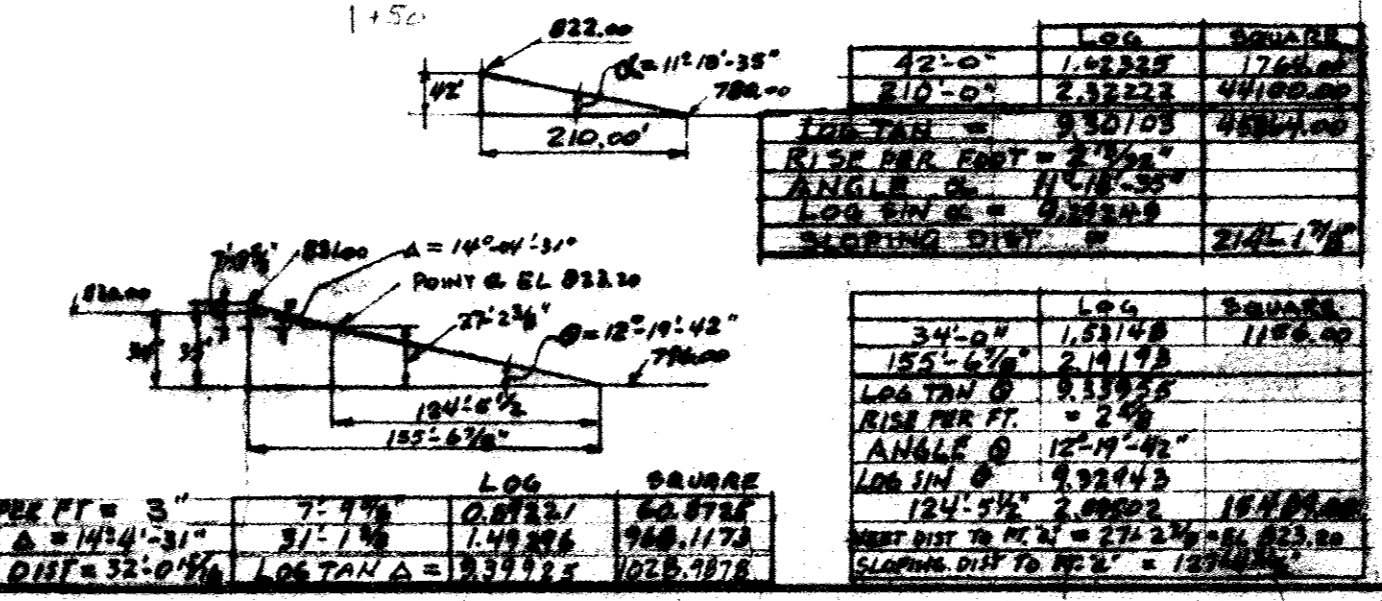
Class X Concrete Cu Yds 658.4
Reinforcement Bars Lbs 45,210



SECTION SHOWING 6" C.I.P. DRAIN OUTLET
NO SCALE



SECTION A-A
SCALE 1/4" = 1'-0"

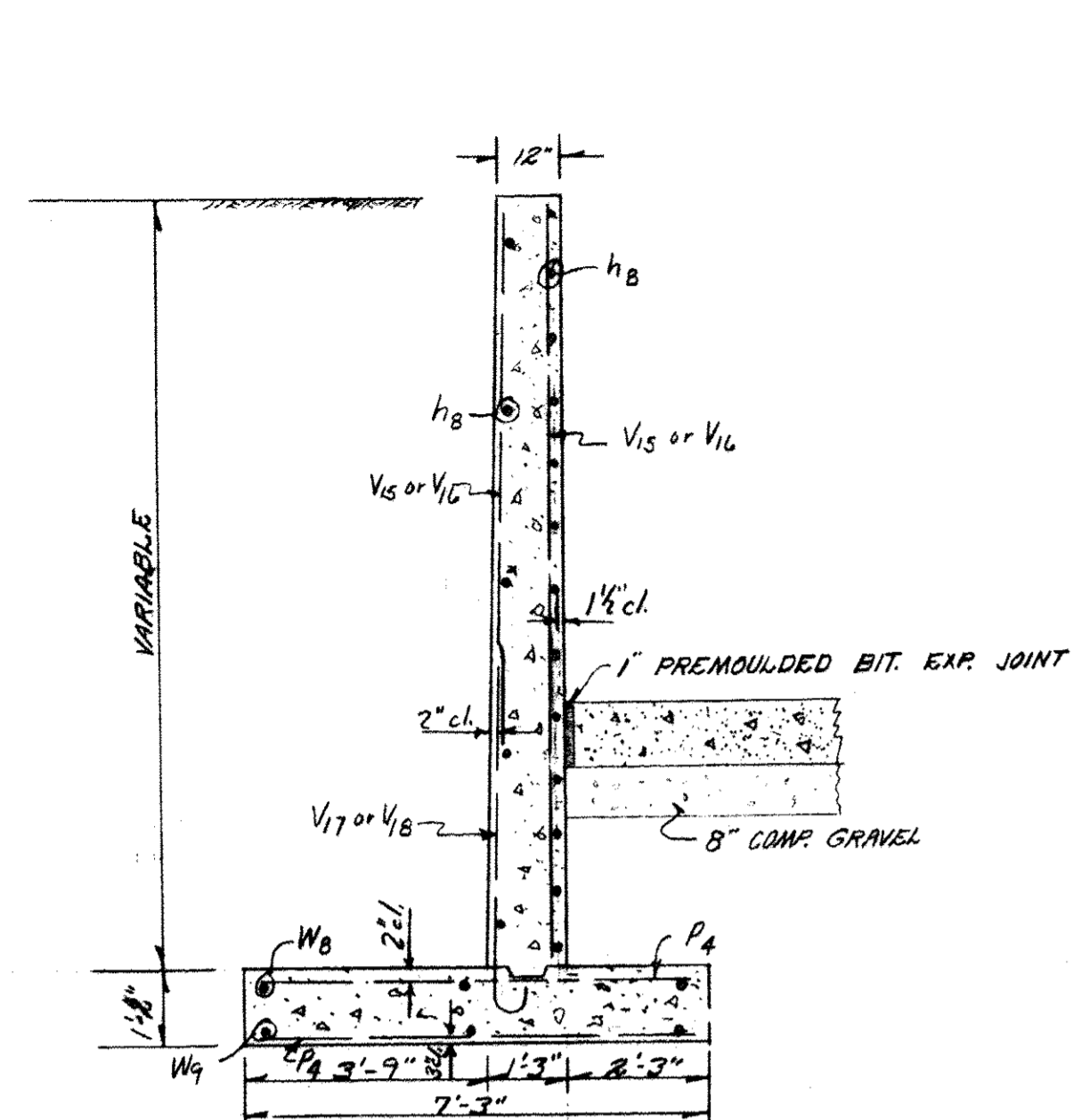


REVISIONS		DRAWN BY		PROJECT NO.
NO	DATE	REMARKS	CE	
1	7/27/59	AS SUBMIT	CE	7-59

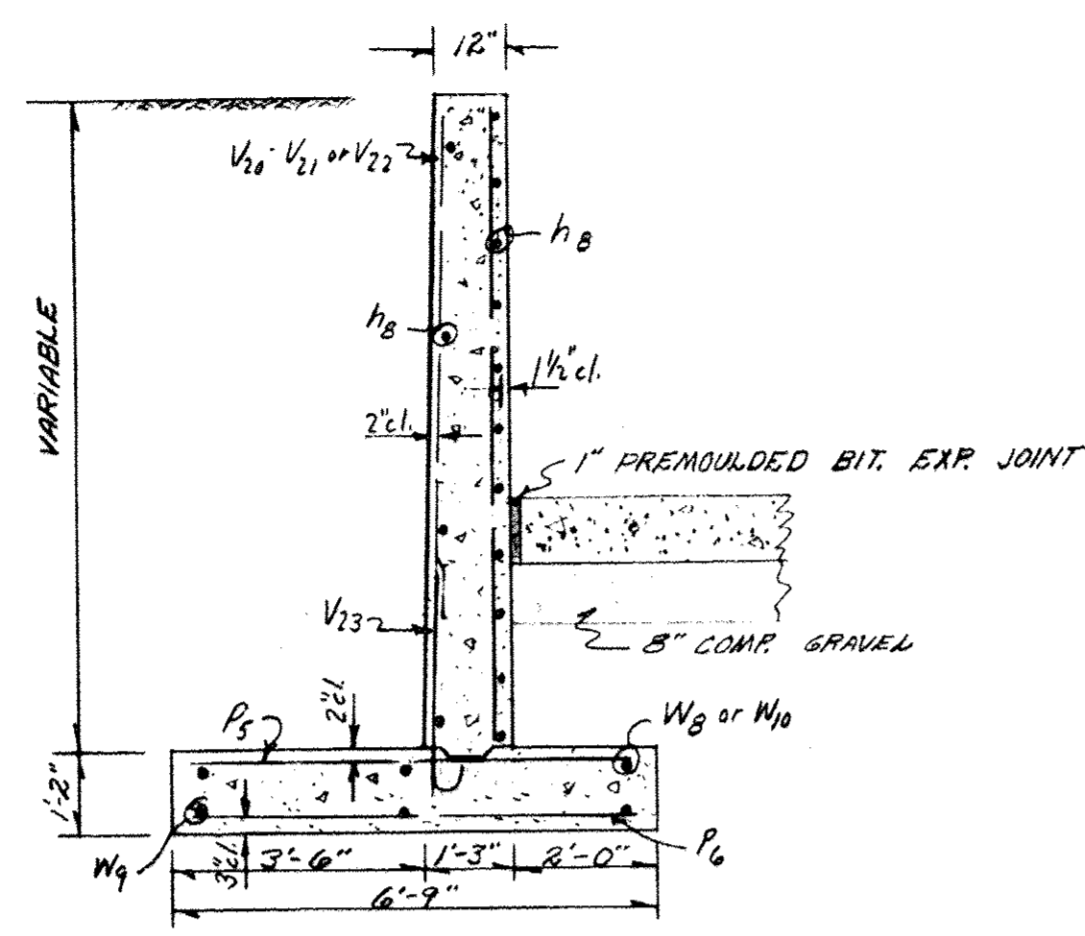
PROPOSED EARTH DAM AND SPILLWAY
WINNEBAGO COUNTY CONSERVATION LAKE
 STATE OF ILLINOIS
 DEPARTMENT OF PUBLIC WORKS AND BUILDINGS
 DIVISION OF ARCHITECTURE AND ENGINEERING
 JOHN D. JARVIS
 SUPERVISING ARCHITECT
 GLEN D. PALMER
 DIRECTOR
 ROBERT H. ANDERSON
 ASSOCIATE ENGINEER

DATE: 7/27/59
 DATE: 7/27/59
 DATE: 7/27/59
 SHEET NO. 8 OF 26 SHEETS

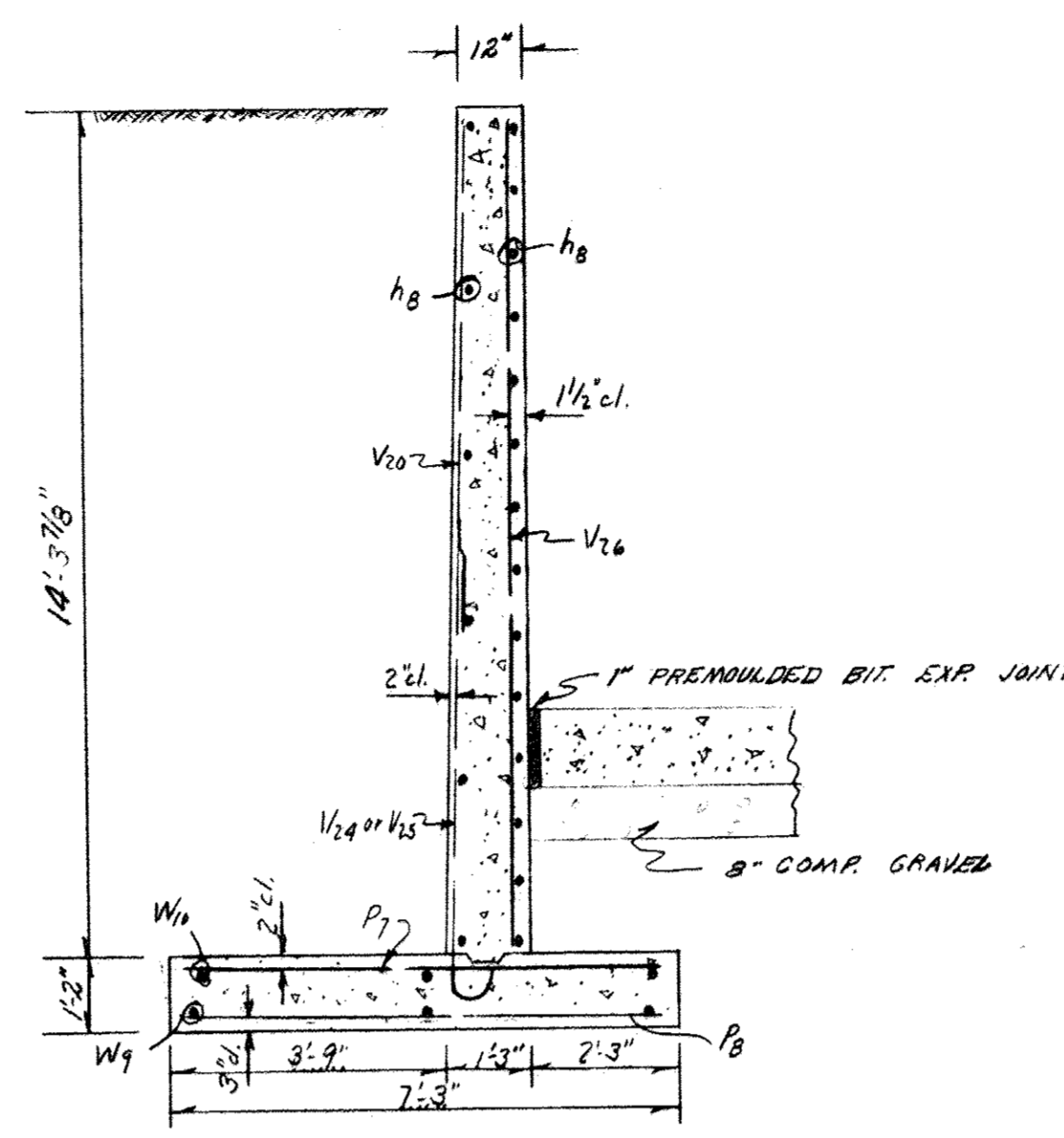
ROK 0246



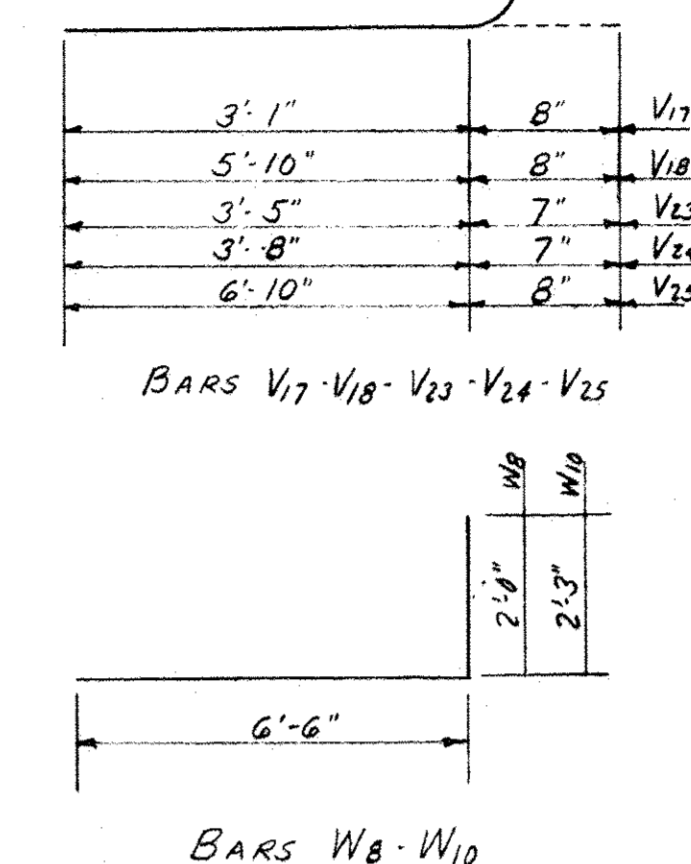
SECTION 10-10
SCALE 3/8"=1'-0"



SECTION 9-9
SCALE 3/8"=1'-0"

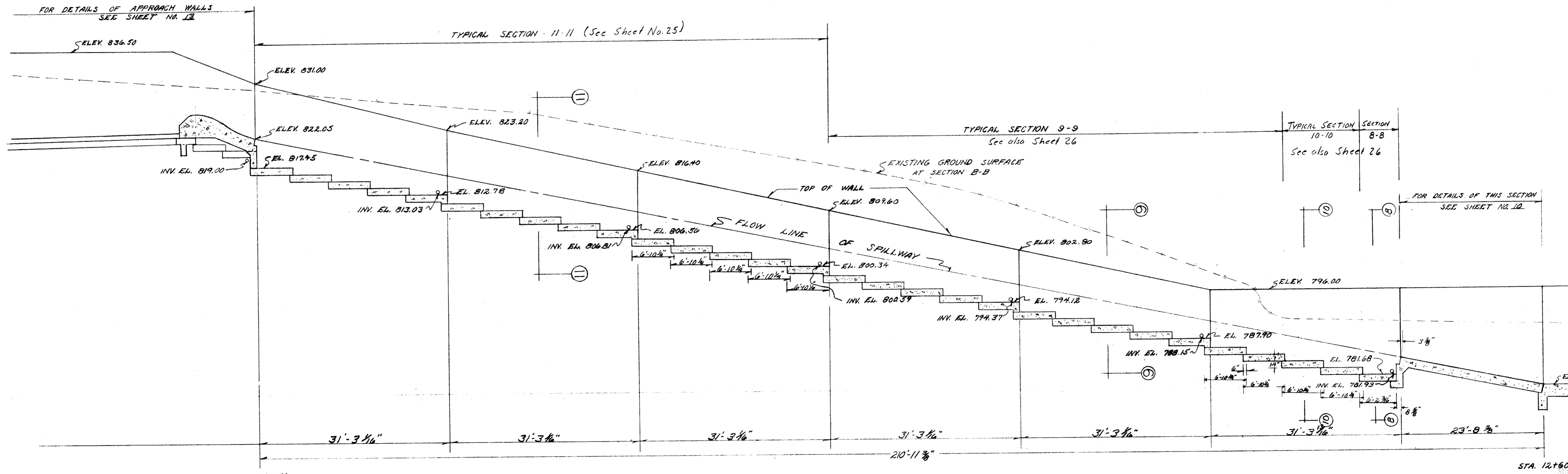


SECTION 8-8
SCALE 3/8"=1'-0"



BILL OF MATERIALS
SPILLWAY WALLS
STA 10+50 TO STA 12+36.30P

BAR	NUMBER REQD	SIZE	LENGTH	SHAPE
V15	30	#4	11'-6"	U
V16	51	#4	10'-3"	U
V17	108	#4	3'-9"	U
V18	106	#6	6'-6"	U
V19	43	#4	9'-9"	U
V20	58	#4	9'-3"	U
V21	51	#4	8'-6"	U
V22	21	#4	7'-9"	U
V23	77	#5	4'-0"	U
V24	5	#5	4'-3"	U
V25	5	#6	7'-6"	U
V26	2	#4	19'-0"	U
P1	183	#4	16'-6"	U
P2	272	#5	7'-0"	U
P3	84	#5	6'-6"	U
P4	84	#4	6'-6"	U
P5	6	#6	7'-0"	U
P6	10	#4	7'-0"	U
P7	72	#5	8'-6"	U
P8	90	#5	6'-6"	U
P9	18	#5	8'-9"	U
CLASS X CONCRETE				CU YDS 293.4
REINFORCEMENT BARS				LB. 19,600



SECTION B-B
SCALE 1/8"=1'-0"

REVISIONS		PRINCIPAL SPILLWAY		DETAILS	
NO.	DATE	REMARKS	DRAWN BY	DATE	PROJECT NO.
1	7/1/59	AS BUILT			7-502
			TRACED BY		FILE NO.
			CHECKED BY		9 1/2
			APPROVED		DATE
			APPROVED		7 JUL 59
			APPROVED		SHEET NO.
			APPROVED		9
			APPROVED		OF 26 SHEETS

PROPOSED EARTH DAM AND SPILLWAY
WINNEBAGO COUNTY CONSERVATION LAKE
STATE OF ILLINOIS
DEPARTMENT OF PUBLIC WORKS AND BUILDINGS
DIVISION OF ARCHITECTURE AND ENGINEERING
JOHN D. JARVIS
SUPERVISING ARCHITECT
GLEN D. PALMER
DIRECTOR
ROBERT H. ANDERSON
ASSOCIATE ENGINEER
DATE 7/1/59
DATE
DATE

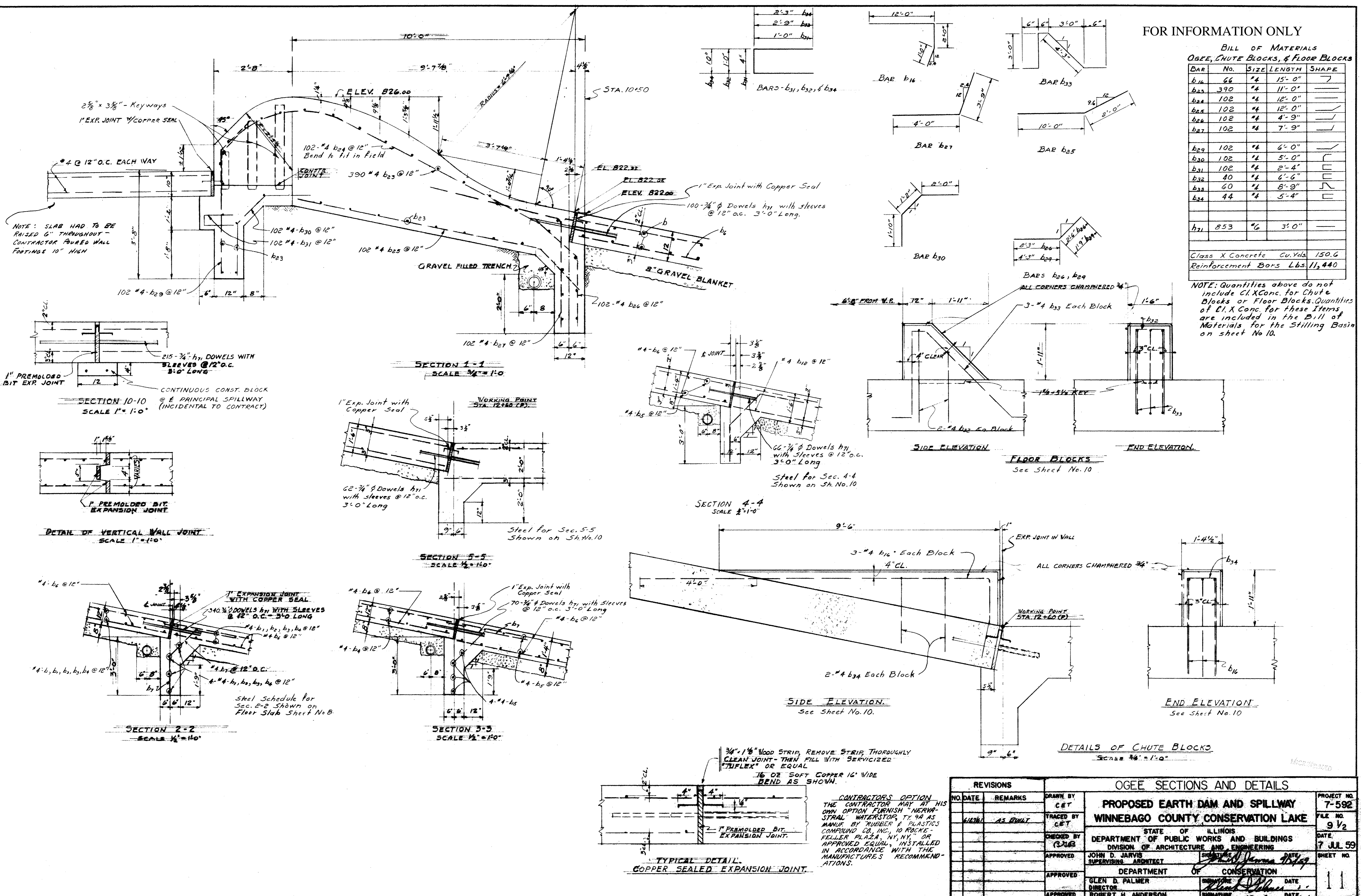
Roco241

FOR INFORMATION ONLY

BILL OF MATERIALS
OGEE, CHUTE BLOCKS, & FLOOR BLOCKS

BAR No.	SIZE	LENGTH	SHAPE
b1a	#6	15'-0"	┐
b2a	#4	11'-0"	┐
b2b	#4	12'-0"	┐
b2c	#4	12'-0"	┐
b2d	#4	4'-9"	┐
b2e	#4	7'-9"	┐
b29	#4	6'-0"	┐
b30	#4	5'-0"	┐
b31	#4	2'-4"	┐
b32	#4	6'-6"	┐
b33	#4	8'-9"	┐
b34	#4	5'-4"	┐
b71	#6	3'-0"	┐
Class X Concrete Cu. Yds.			150.6
Reinforcement Bars Lbs.			11,440

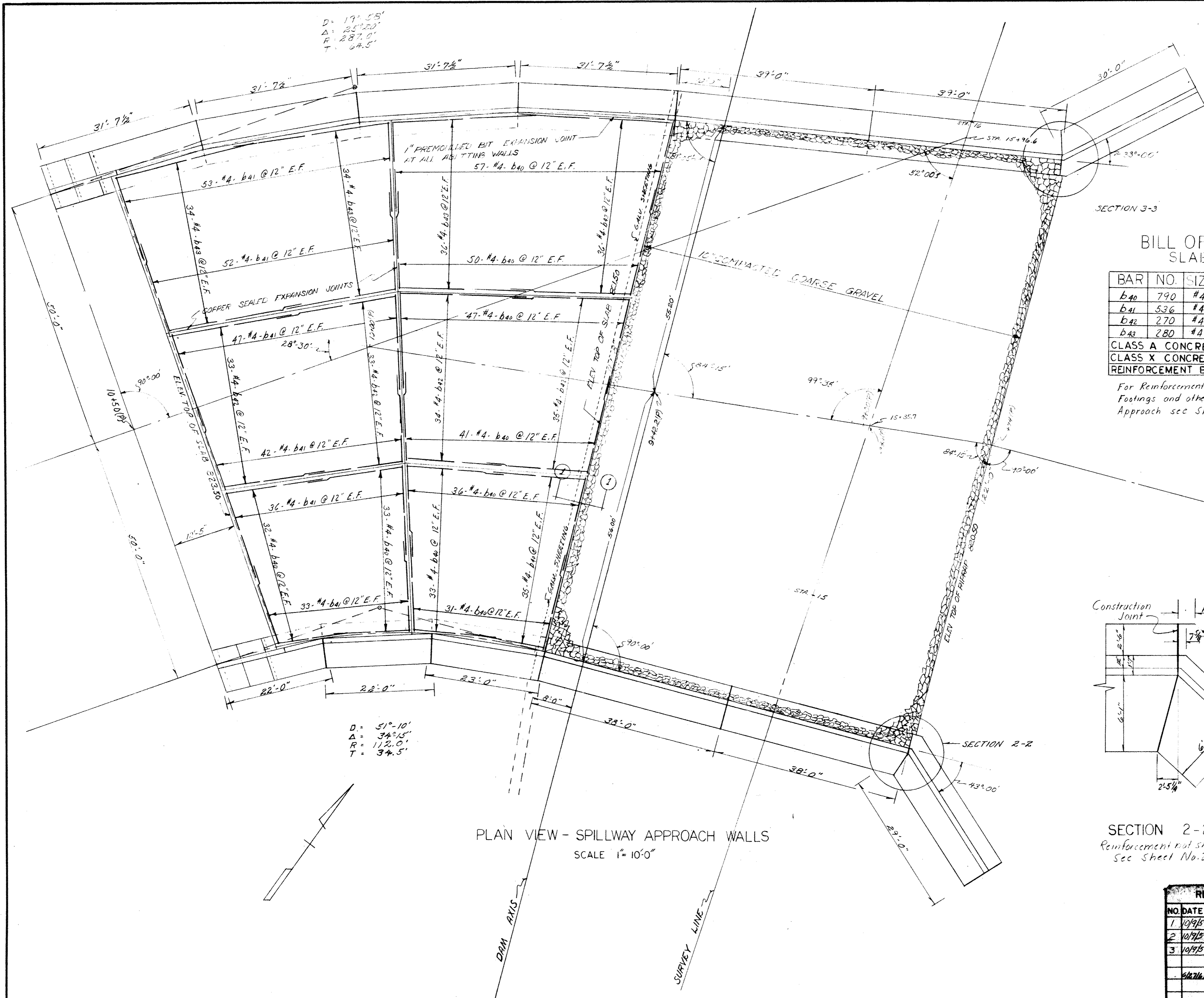
NOTE: Quantities above do not include Cl. X Conc. for Chute Blocks or Floor Blocks. Quantities of Cl. X Conc. for these items are included in the Bill of Materials for the Stilling Basin on sheet No. 10.



REVISIONS		OGEE SECTIONS AND DETAILS		
NO.	DATE	REMARKS	DRAWN BY	PROJECT NO.
			CET	7-592
			TRACED BY	FILE NO.
			CET	9 1/2
			CHECKED BY	DATE
			RJA	7 JUL 59
			APPROVED	SHEET NO.
			JOHN D. JARVIS	11
			SUPERVISING ARCHITECT	
			DEPARTMENT OF CONSERVATION	
			GLEN B. PALMER	
			DIRECTOR	
			ROBERT H. ANDERSON	
			ASSOCIATE ENGINEER	

CONTRACTOR'S OPTION
THE CONTRACTOR MAY AT HIS OWN OPTION FURNISH NERVA-STRAL WATERSTOP, T-94 AS MANUF. BY RUBBER & PLASTICS COMPOUND CO. INC., 10 ROCKEFELLER PLAZA, NY, NY OR APPROVED EQUAL, INSTALLED IN ACCORDANCE WITH THE MANUFACTURER'S RECOMMENDATIONS.

FOR INFORMATION ONLY



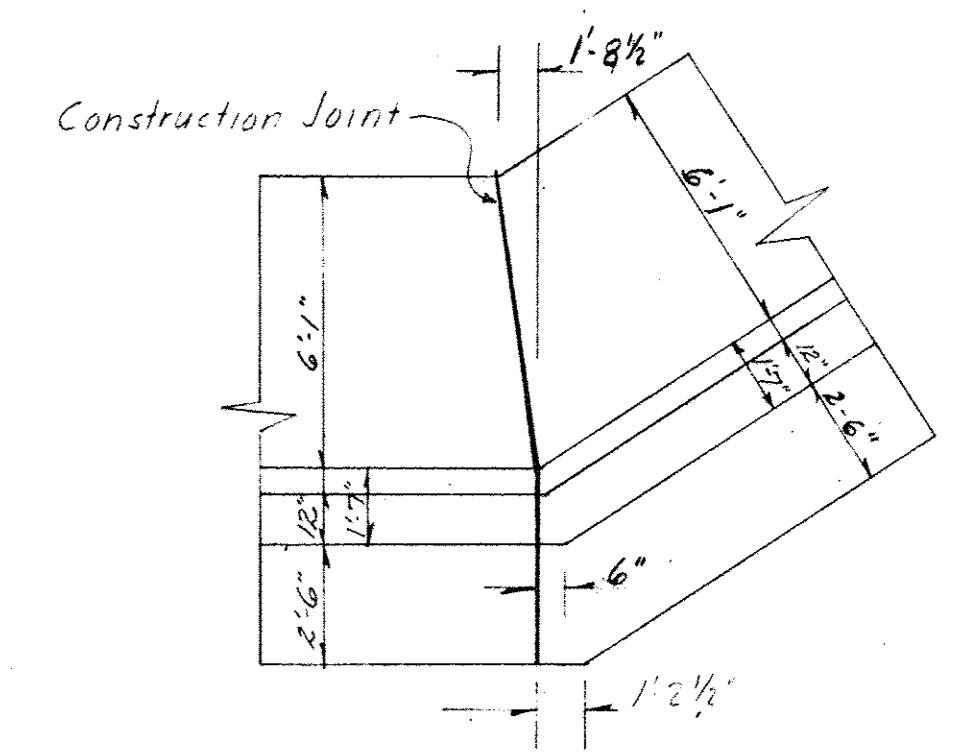
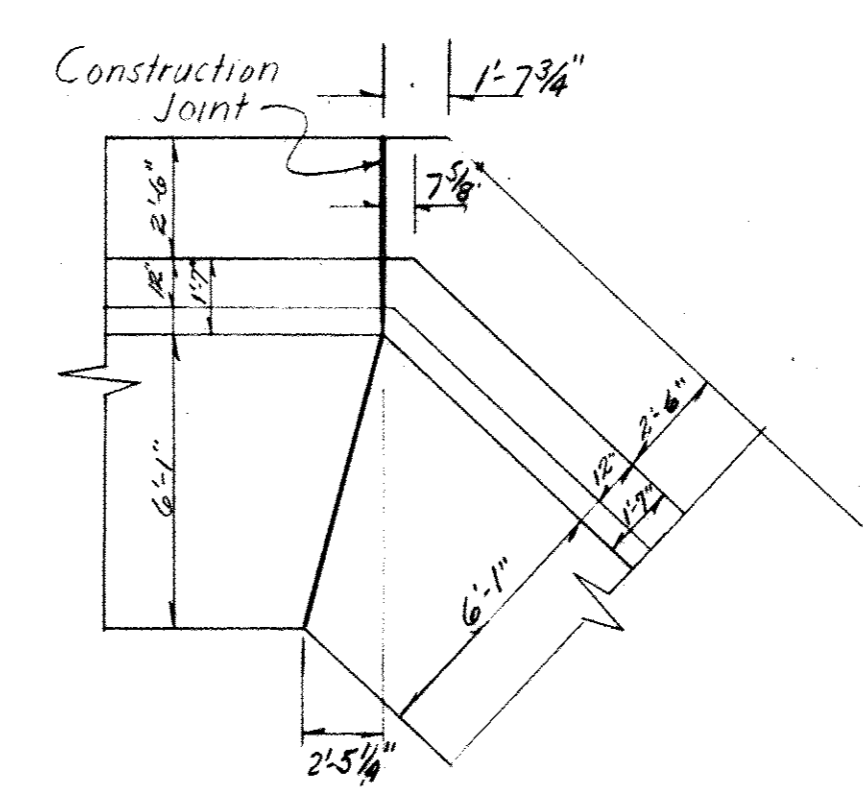
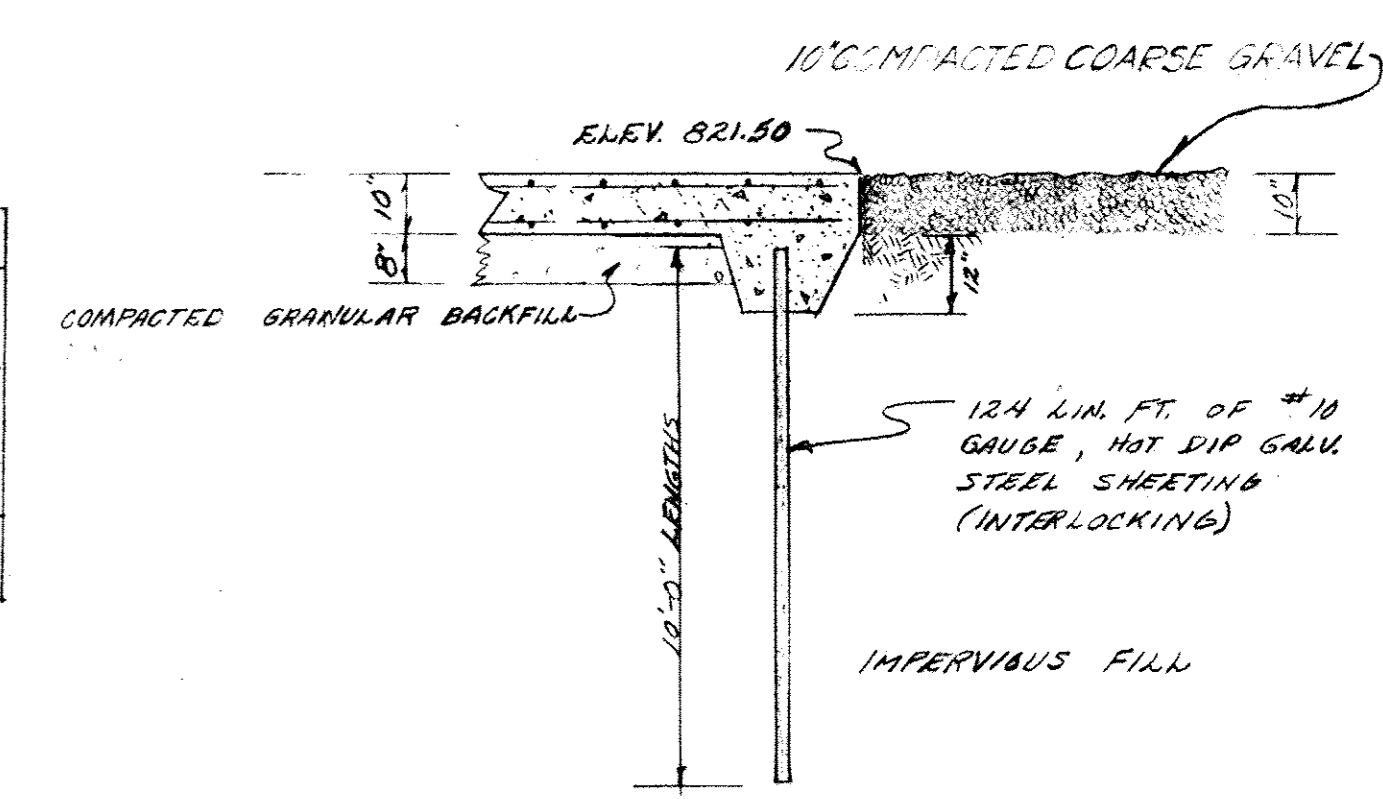
D = 17'-55"
A = 25'-00"
R = 287'-0"
T = 64.5'

D = 51'-10"
A = 34'-15"
R = 112'-0"
T = 34.5'

BILL OF MATERIAL
SLAB ONLY

BAR NO.	SIZE	LENGTH	SHAPE
b40	790 #4	18'-6"	—
b41	536 #4	17'-6"	—
b42	270 #4	23'-6"	—
b43	280 #4	29'-0"	—
CLASS A CONCRETE - CU.YDS.			50.0
CLASS X CONCRETE - CU.YDS.			270.0
REINFORCEMENT BARS - LBS.			25,690

For Reinforcement Details of Walls and Footings and other details of Spillway Approach see Sheet Nos. 13 & 24



REVISIONS		PLAN VIEW OF SPILLWAY APPROACH	
NO.	DATE	REMARKS	
1	10/9/57	N. Wing Wall	
2	10/9/59	S. Wing Wall	
3	10/9/59	Changed Fin Top to 10' Comp. Coarse Gr.	
4	6/27/61	AS BUILT	

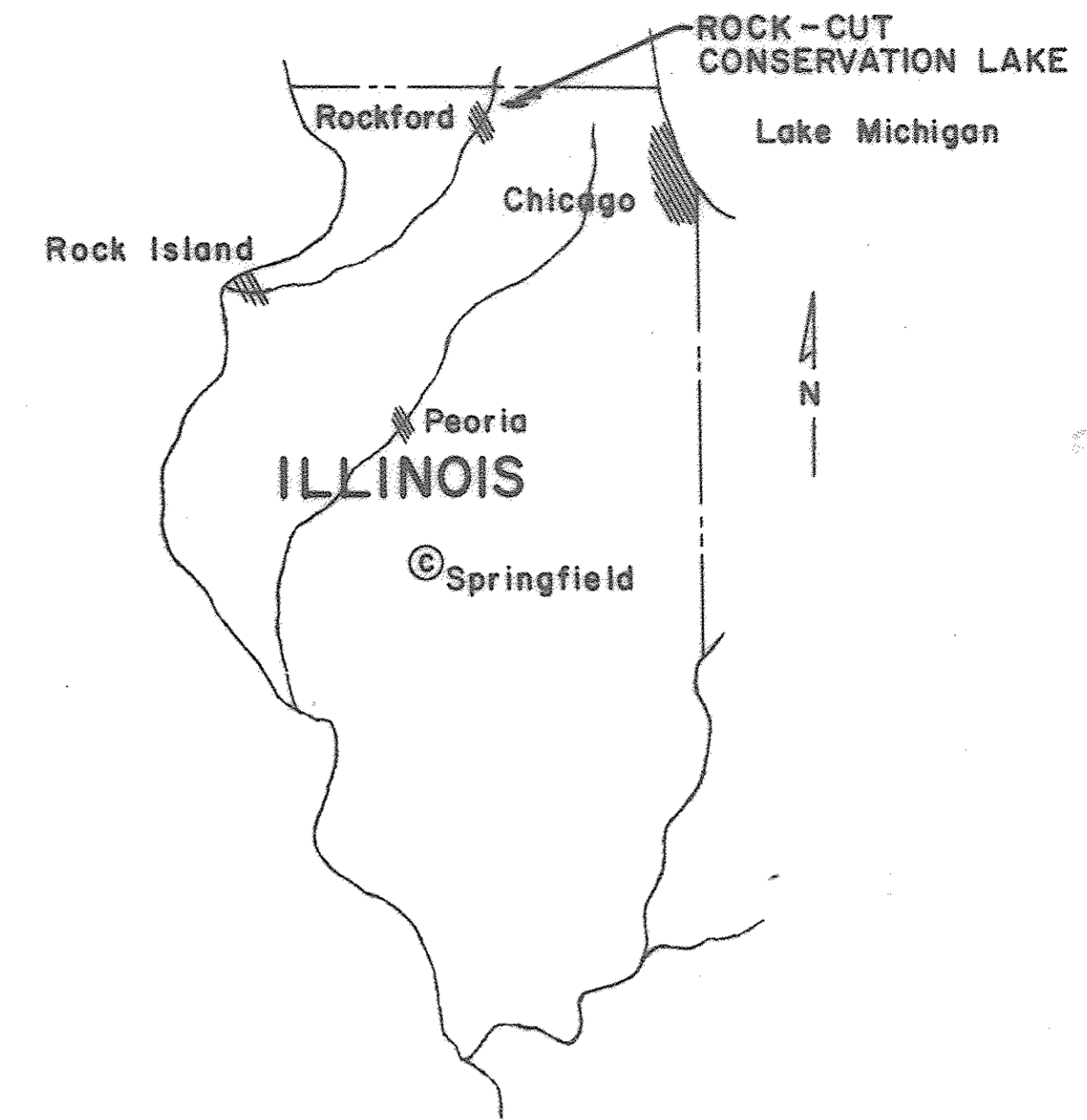
DRAWN BY <i>BMB</i>		PROJECT NO. 7-592	
TRACED BY <i>BMB</i>		FILE NO. 9 1/2	
CHECKED BY		DATE 7 JUL 59	
APPROVED JOHN D. JARVIS SUPERVISING ARCHITECT		SIGNATURE <i>John D. Jarvis</i>	
APPROVED GLEN D. PALMER DIRECTOR		SIGNATURE <i>Glen D. Palmer</i>	
APPROVED ROBERT H. ANDERSON ASSOCIATE ENGINEER		SIGNATURE <i>Robert H. Anderson</i>	
		DATE 9/2/59	
		SHEET NO. 12	
		OF 20 SHEETS	

R000241

FOR INFORMATION ONLY

ROCK-CUT CONSERVATION LAKE WINNEBAGO COUNTY, ILLINOIS SPILLWAY BRIDGE

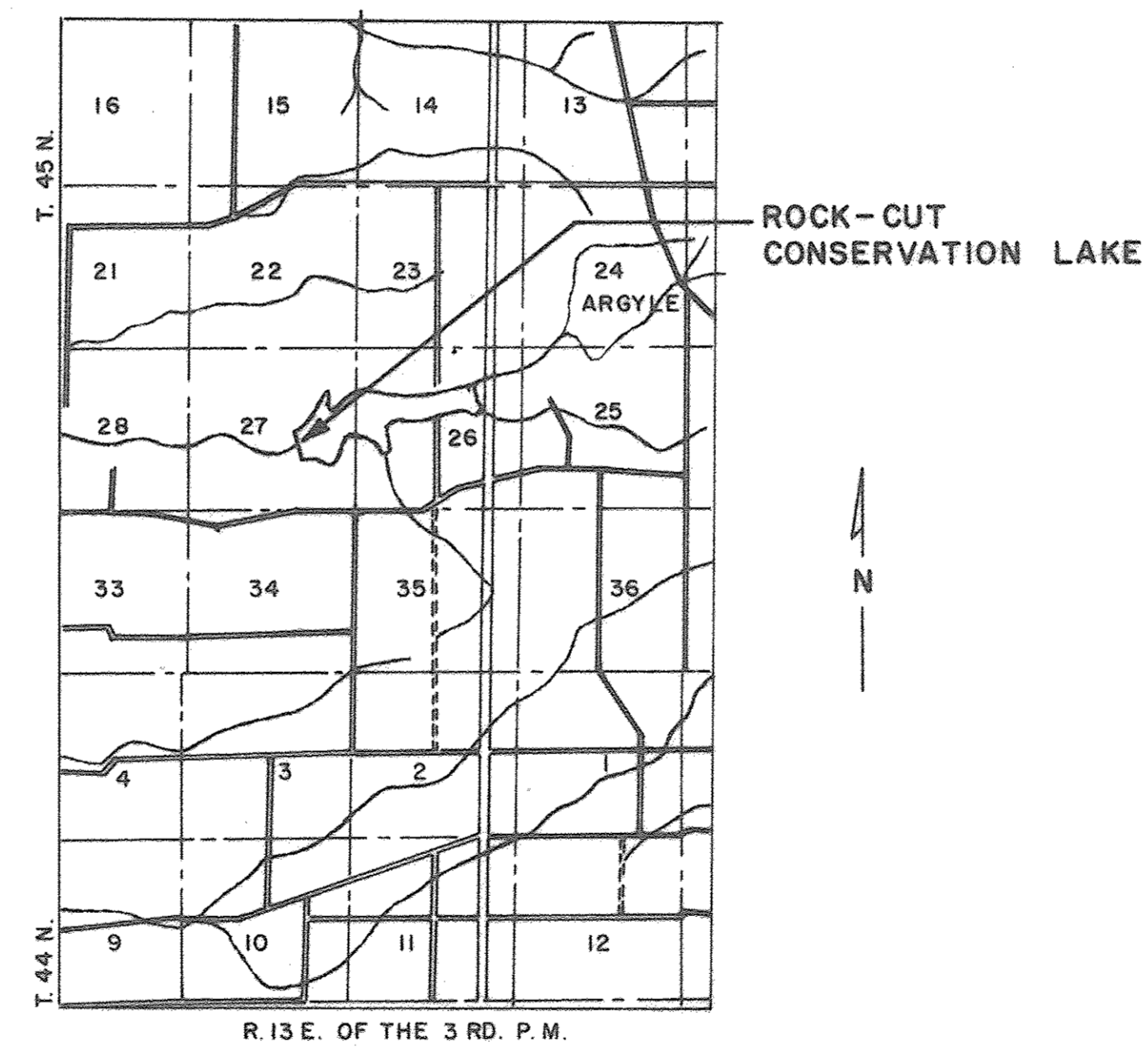
DEPARTMENT OF CONSERVATION
WM. T. LODGE, DIRECTOR



REGIONAL PLAN

GENERAL ITEMS OF WORK

- I. PILE
 - a. Driving 720 L.F.
 - b. Concrete 24 C.Y.
- 2. SUPERSTRUCTURE
 - a. Erection—steel 63 Tons
 - b. Concrete 29 C.Y.
- 3. DECK—TIMBER 3426 S.F.
- 4. BRIDGE GUARD RAIL 293 L.F.
- 5. APPROACH GUARD RAIL 1125 L.F.

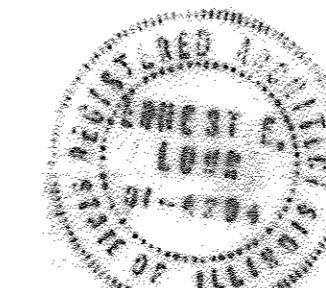
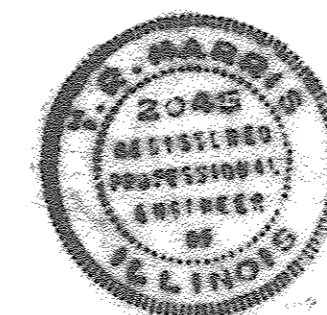


LOCATION MAP

SCALE : 1 = 62500

INDEX OF SHEETS

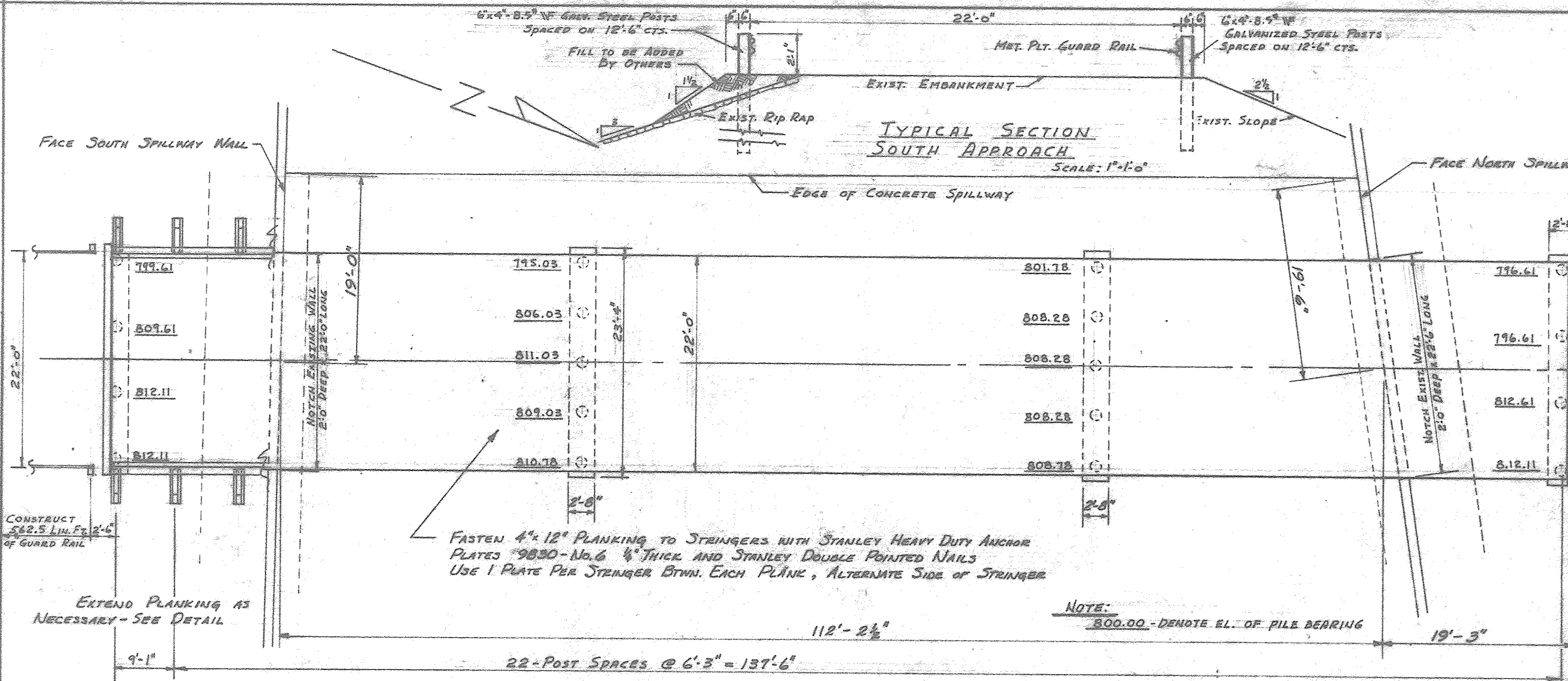
- 1. COVER SHEET
- 2. BRIDGE PLAN, ELEVATION & DETAILS



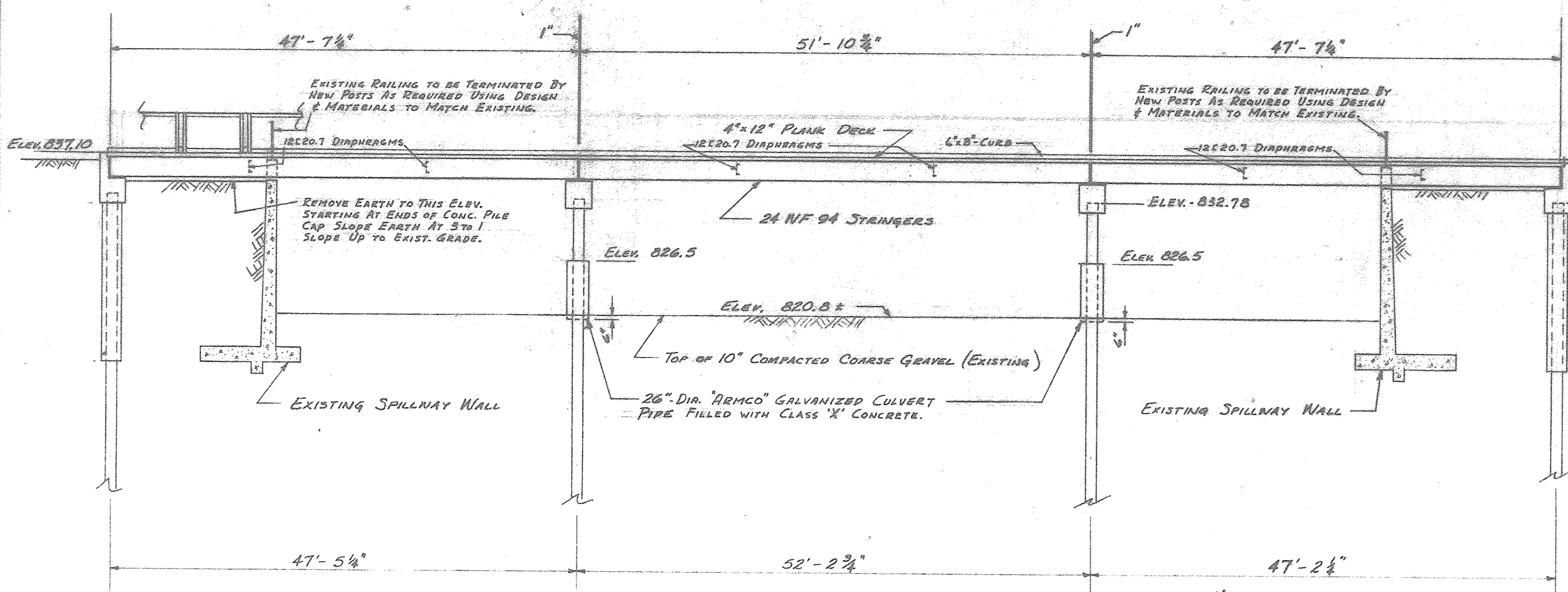
REVISIONS		COVER SHEET		
1	7-15-62	AS BUILT	DRAWN BY EEL	PROJECT NO.
			TRACED BY	FILE NO. 912
			CHECKED BY EEL	DATE 7-12-62
			APPROVED R.D. HENDERSON ACTING SUPERVISING ARCHITECT	SHEET 1
			STATE OF ILLINOIS DEPARTMENT OF PUBLIC WORKS AND BUILDINGS DIVISION OF ARCHITECTURE AND ENGINEERING	OF 2
			DEPARTMENT OF CONSERVATION	SHEETS
			WM. T. LODGE DIRECTOR	
			ENGINEERING SERVICE CORP. DECATUR, ILLINOIS	

Rocosta C

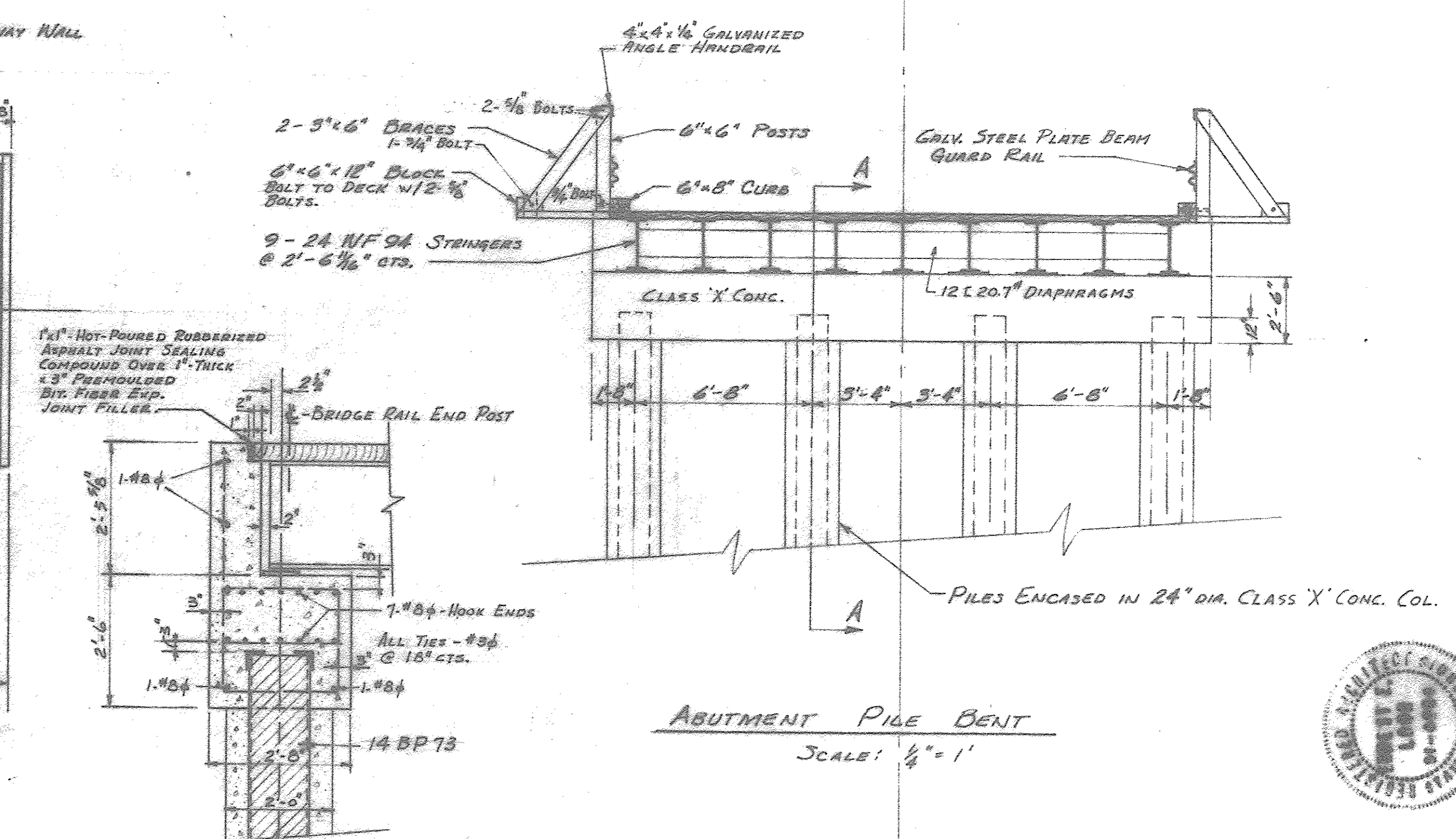
FOR INFORMATION ONLY



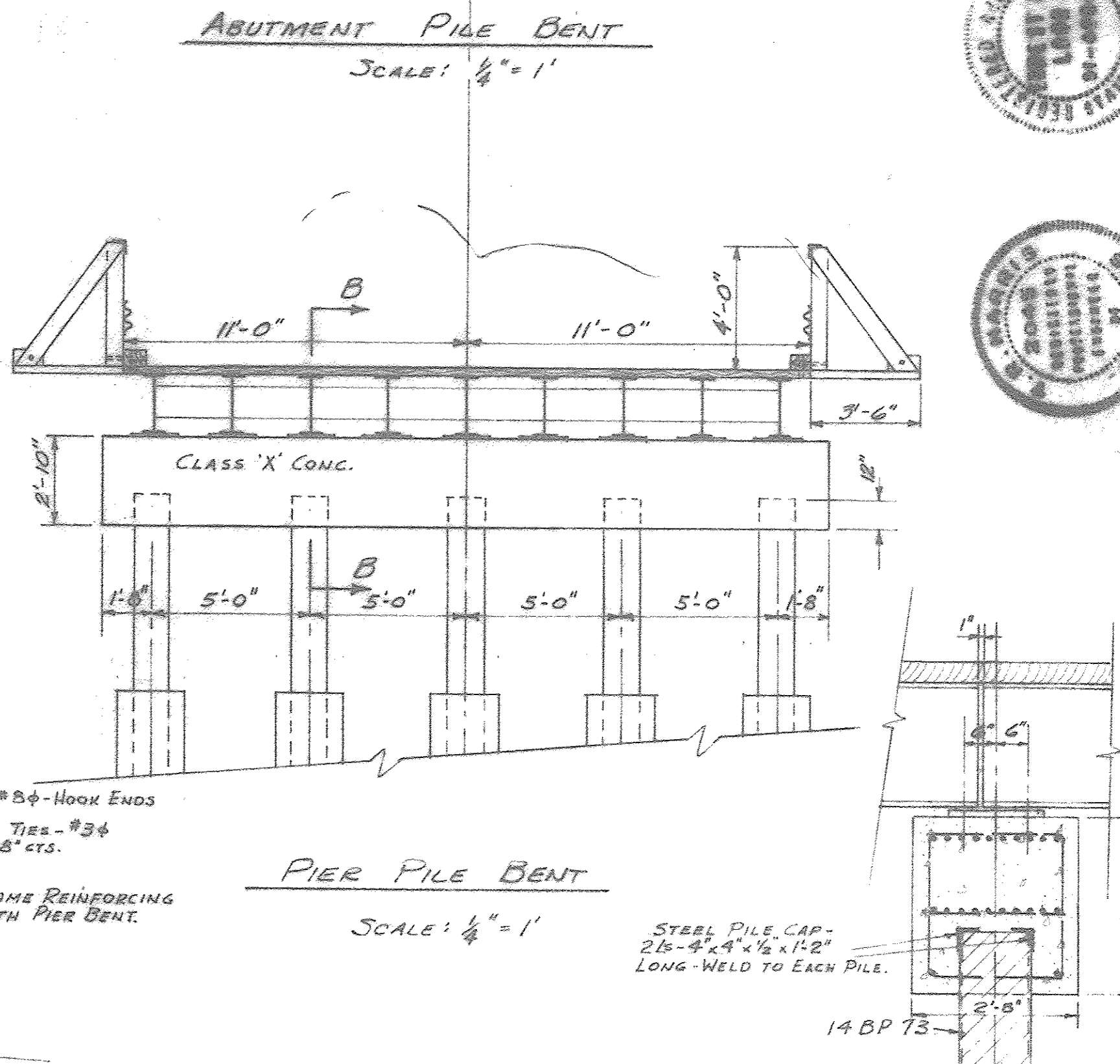
PLAN
SCALE: 1/8" = 1'



ELEVATION
SCALE: 1/8" = 1'

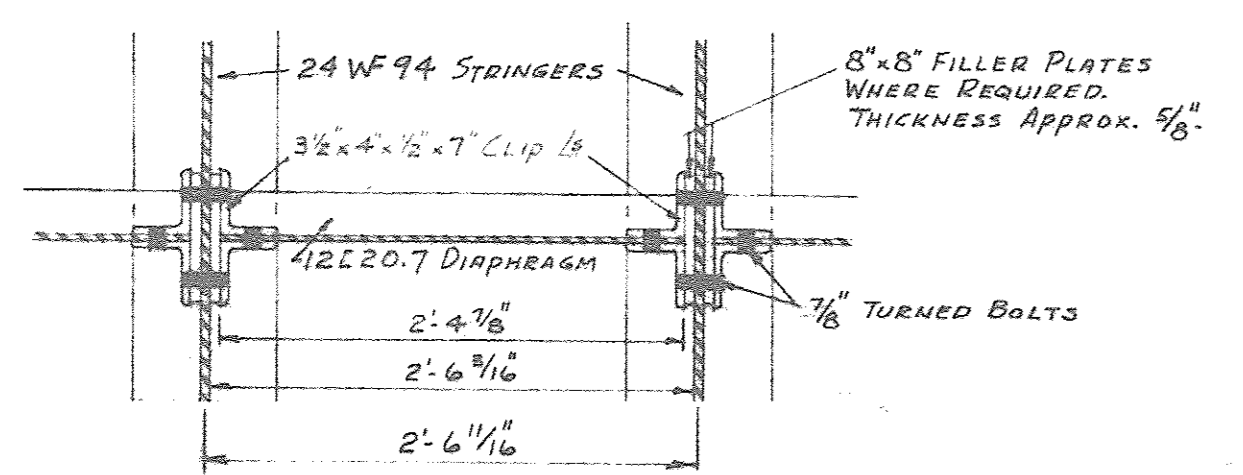


SECTION A-A
SCALE: 1/2" = 1'

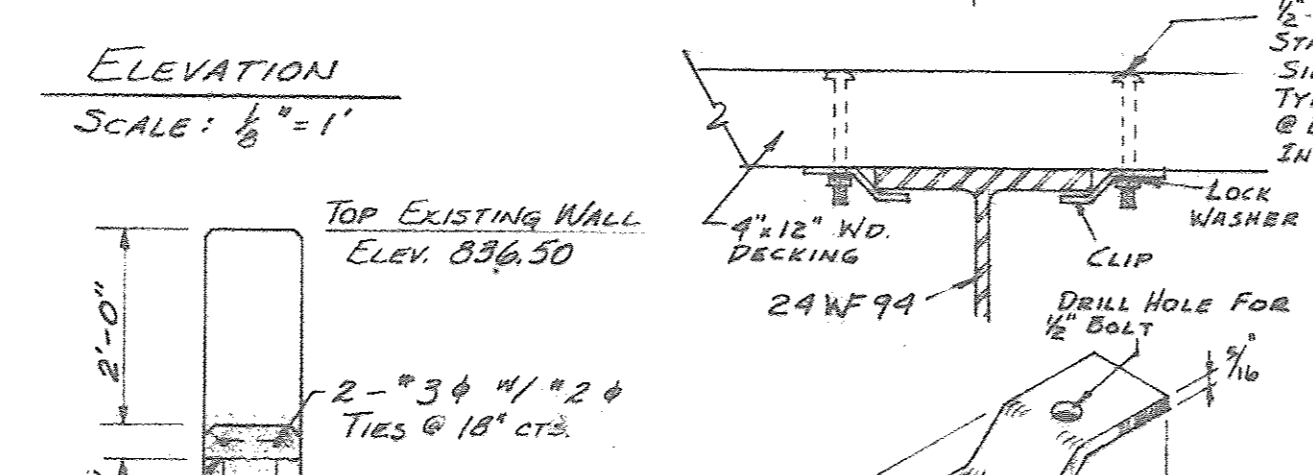


SECTION B-B FOR SOUTH PIER BENT
SCALE: 1/2" = 1'

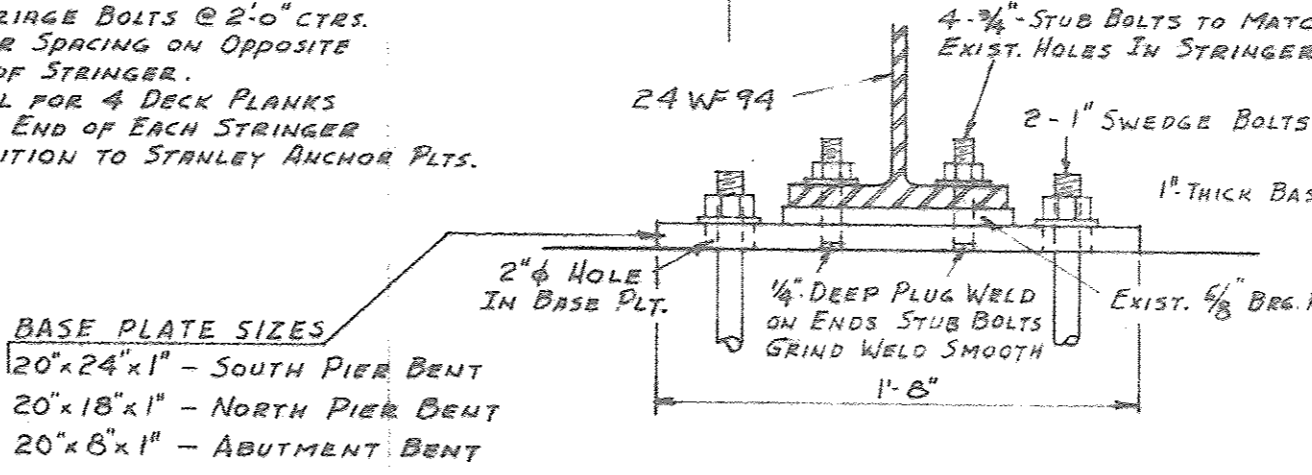
SECTION B-B FOR NORTH PIER BENT
SCALE: 1/2" = 1'



SPECIAL DIAPHRAGM DETAIL
SCALE: 1" = 1'-0"

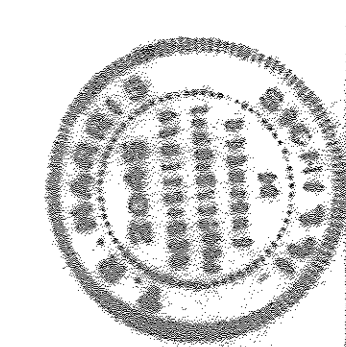
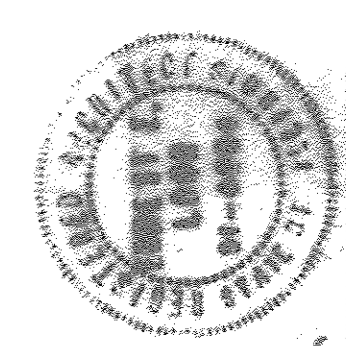


WALL NOTCH DETAIL
NO SCALE



STRINGER BEARING DETAIL
SCALE: 1 1/2" = 1'-0"

REVISIONS		BRIDGE PLAN, ELEVATION & DETAILS	
1	7-15-63 AS BUILT	DRAWN BY EEL	STEEL SPILLWAY BRIDGE
		TRACED BY	ROCK-CUT CONSERVATION LAKE
		CHECKED BY EEL	WINNEBAGO COUNTY, ILLINOIS
		APPROVED	STATE OF ILLINOIS
			DEPARTMENT OF PUBLIC WORKS AND BUILDINGS
			DIVISION OF ARCHITECTURE AND ENGINEERING
			R.D. HENDERSON
			ACTING SUPERVISING ARCHITECT
			DATE 7/16/62
			DEPARTMENT OF CONSERVATION
			WM. T. LODGE
			DIRECTOR
			ENGINEERING SERVICE CORP.
			DECATUR, ILLINOIS
			DATE 7/16/62
			SHEET 2
			OF 2
			SHEETS



ROC0086