

034

STATE OF ILLINOIS
DEPARTMENT OF TRANSPORTATION

F.A.S. RTE.	SECTION	COUNTY	TOTAL SHEETS	SHEET NO.
636	(2,3) Q-2 & (4) Q	CHRISTIAN	6	1
ILLINOIS			CONTRACT NO. 72K87	

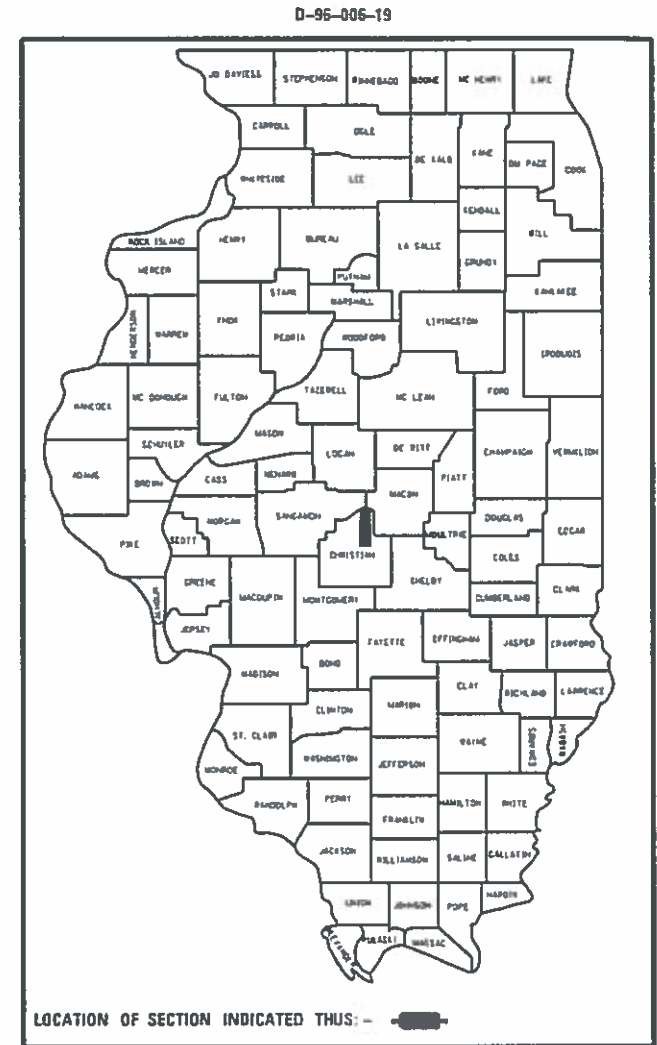
FOR INDEX OF SHEETS, SEE SHEET NO. 2

PROPOSED IMPROVEMENTS

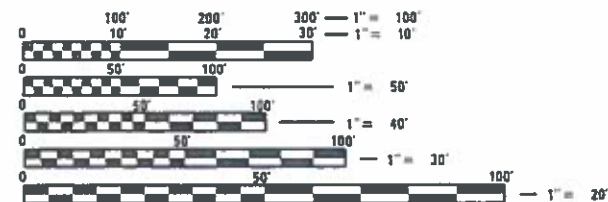
FAS 636 (MT. AUBURN RD)
SECTION: (2,3) Q-2 & (4) Q
HALF SMART RESURFACING W/A2

CHRISTIAN CO

C-96-007-19



ADT = 700
SU = 2.28%
MU = 2.43%
PV = 95.29%



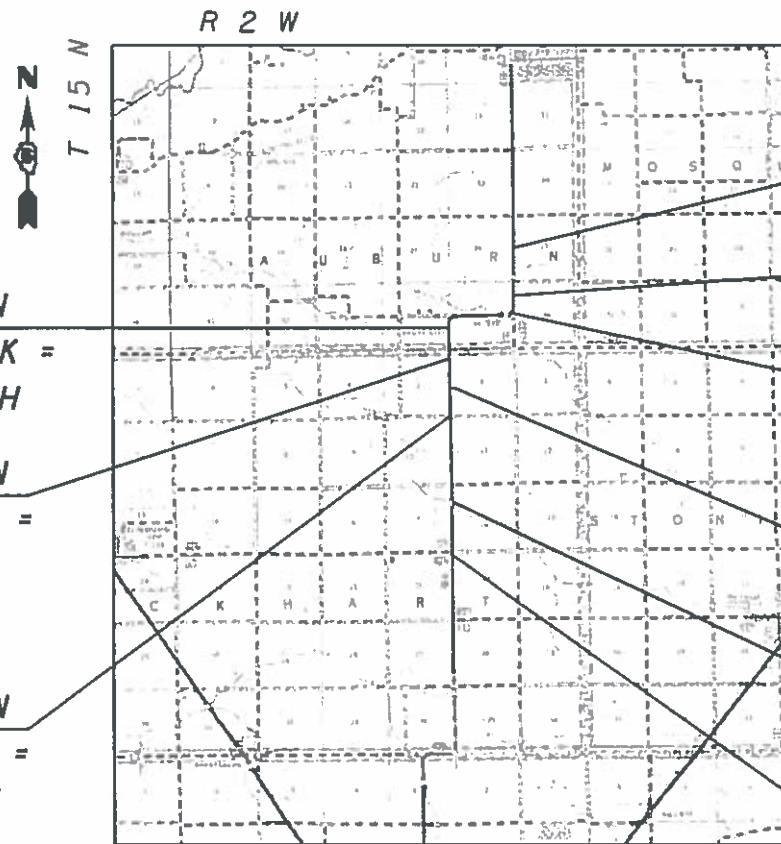
FULL SIZE PLANS HAVE BEEN PREPARED USING STANDARD ENGINEERING SCALES. REDUCED SIZED PLANS WILL NOT CONFORM TO STANDARD SCALES. IN MAKING MEASUREMENTS ON REDUCED PLANS, THE ABOVE SCALES MAY BE USED.

J.U.L.I.E.
JOINT UTILITY LOCATION INFORMATION FOR EXCAVATION
1-800-892-0123
OR 811

STATION EQUATION
STA. 282+55.02 BK =
STA. 283+84.32 AH

STATION EQUATION
STA. 312+80.17 BK =
STA. 313+11.97 AH

STATION EQUATION
STA. 411+99.79 BK =
STA. 411+85.09 AH



BEGIN PROJECT
STA. 174+60.31

OMISSION BEGINS
STA. 224+51.52

STATION EQUATION
STA. 229+87.22 BK =
STA. 230+51.55 AH

OMISSION ENDS
STA. 332+37.00

BRIDGE OMISSION
STA. 425+91.00 TO
STA. 427+71.00

END PROJECT
STA. 467+00.00

PROJECT ENGINEER : MIKE IRWIN - (217)524-7765
PROJECT MANAGER : TIM SHARP - (217)524-9160

CONTRACT NO. 72K87

STATE OF ILLINOIS
DEPARTMENT OF TRANSPORTATION

SUBMITTED 27 July 2018

[Signature]
REGION FOUR ENGINEER

Oct 5 2018
[Signature]
ENGINEER OF DESIGN AND ENVIRONMENT

Oct 5 2018
[Signature]
DIRECTOR OF HIGHWAYS PROJECT IMPLEMENTATION

PRINTED BY THE AUTHORITY
OF THE STATE OF ILLINOIS

INDEX OF SHEETS

SHEET NO.	DESCRIPTION
1.	COVER SHEET
2.	INDEX OF SHEETS, STANDARDS, GENERAL NOTES & SIGNATURE
3.	SUMMARY OF QUANTITIES
4.	SCHEDULES OF QUANTITIES
5.	PROJECT LOCATION MAP
6.	PROJECT TYPICAL SECTIONS

STANDARDS

STANDARD NO.	DESCRIPTION
701006-05	OFF-ROAD OPERATIONS, 2L, 2W, 15' (4.5m) TO 24" (600mm) FROM EDGE OF PAVMENT
701201-04	LANE CLOSURE, 2L, 2W, DAY ONLY, FOR SPEEDS ≥ 45 MPH
701306-04	LANE CLOSURE, 2L, 2W, SLOW MOVING OPERATIONS DAY ONLY, FOR SPEEDS ≥ 45 MPH
701311-03	LANE CLOSURE, 2L, 2W, MOVING OPERATIONS, DAY ONLY
701901-07	TRAFFIC CONTROL DEVICES

NOTES:

COVER AND SEAL COAT AGGREGATE SHALL BE CRUSHED LIMESTONE.

D-6 OPERATIONS WILL PLACE PERMANENT PAVEMENT MARKINGS.

UP TO 3 SWEEPINGS MAY BE REQUIRED BY A ROTARY TYPE BROOM TO REMOVE EXCESS AGGREGATE.

CONTRACTOR SHALL PLACE AGGREGATE SHOULDERS, TYPE B. PRIOR TO BITUMINOUS SURFACE TREATMENTS A2.

**STATE OF ILLINOIS
DEPARTMENT OF TRANSPORTATION
DIVISION OF HIGHWAYS
DISTRICT 6**

EXAMINED June 26th 20 18

[Signature]
ENGINEER OF OPERATIONS

EXAMINED June 15 20 18

[Signature]
ENGINEER OF PROJECT IMPLEMENTATION

EXAMINED June 15 20 18

[Signature]
ENGINEER OF PROGRAM DEVELOPMENT

MIXTURE REQUIREMENTS	
LOCATION:	FAS 636 (MT. AUBURN RD.)
MIXTURE USE(S):	LEVELING BINDER
PG:	58 - 28
DESIGN AIR VOIDS:	4.0% @ N50
MIXTURE COMPOSITION:	IL 9.5
FRICTION AGGREGATE:	N/A
QUALITY MANAGEMENT:	QC/QA
SUBLOT SIZE:	N/A

0-01625-6004
 100% STATE
 CHRISTIAN
 ROADWAY
 0005
 RURAL

CODE NO.	ITEM	UNIT	TOTAL QUANTITY	
40300400	BITUMINOUS MATERIALS (COVER AND SEAL COATS)	TON	137	137
40300500	COVER COAT AGGREGATE	TON	559	559
40300600	SEAL COAT AGGREGATE	TON	447	447
40600290	BITUMINOUS MATERIALS (TACK COAT)	POUND	20118	20118
40600400	MIXTURE FOR CRACKS, JOINTS AND FLANGEWAYS	TON	5	5
40600625	LEVELING BINDER (MACHINE METHOD), N50	TON	1909	1909
40600982	HOT-MIX ASPHALT SURFACE REMOVAL - BUTT JOINT	SQ YD	220	220
40600990	TEMPORARY RAMP	SQ YD	44	44
48101200	AGGREGATE SHOULDERS, TYPE B	TON	1389	1389
67100100	MOBILIZATION	L SUM	1	1
70100450	TRAFFIC CONTROL AND PROTECTION, STANDARD 701201	L SUM	1	1
70100460	TRAFFIC CONTROL AND PROTECTION, STANDARD 701306	L SUM	1	1
78300200	RAISED REFLECTIVE PAVEMENT MARKER REMOVAL	EACH	230	230
X4401198	HOT-MIX ASPHALT SURFACE REMOVAL, VARIABLE DEPTH	SQ YD	44706	44706

FILE NAME =	USER NAME = sharp1d	DESIGNED -	REVISED -
S:\CONTRACTS\172K87 - FAS 636 (M...)	Suburn Rd\Christian Co. - Half Smart & A2\PL...	DRAWN -	REVISED -
	PLLOT SCALE = 40.0000 1/1 in.	CHECKED -	REVISED -
Default	PLLOT DATE = 7/24/2018	DATE -	REVISED -

STATE OF ILLINOIS
 DEPARTMENT OF TRANSPORTATION

SUMMARY OF QUANTITIES

SCALE: SHEET OF SHEETS STA. TO STA.

F.A.S. RTE.	SECTION	COUNTY	TOTAL SHEETS	SHEET NO.
636	(2,3) 0-2 & (4) 0	CHRISTIAN	6	3
ILLINOIS FED. AID PROJECT			CONTRACT NO. 72K87	

40300400 BITUMINOUS MATERIALS (COVER AND SEAL COATS)					
FAS 636 (CHRISTIAN CO.)			LENGTH	WIDTH	AREA
STA.	TO	STA.	FT	FT	SQ YD
174+60.31	TO	224+51.52	4991.21	22	12200.74
STA. EQ: 229+87.22 bk = STA. 230+51.55 ah					
STA. EQ: 282+55.02 bk = STA. 283+84.32 ah					
STA. EQ: 312+80.17 bk = STA. 313+11.97 ah					
332+37.00	TO	411+99.79	7962.79	22	19464.60
STA. EQ: 411+99.79 bk = STA. 411+85.09 ah					
411+85.09	TO	425+91.00	1405.91	22	3436.67
BRIDGE OMISSION STA. 425+91.00 TO 427+71.00					
427+71.00	TO	467+00.00	3929	22	9604.22
TOTAL			18288.91		44706.22
COVER COAT (0.32TON/SQ YD * 8.5PPG) (1TON=2000POUND)					
RATE	PPG	POUND	AREA	TON	
0.32	8.5	2000	44706.22	60.80	
SEAL COAT (0.40TON/SQ YD * 8.5PPG) (1TON=2000POUND)					
RATE	PPG	POUND	AREA	TON	
0.4	8.5	2000	44706.22	76.00	
TOTAL COVER COAT + SEAL COAT (TON)				137	

40300500 COVER COAT AGGREGATE		
AREA	RATE	TON
SQ YD	TON/SQ YD	
44706.22	0.0125	559

40300600 SEAL COAT AGGREGATE		
AREA	RATE	TON
SQ YD	TON/SQ YD	
44706.22	0.01	447

78300200 RAISED REFLECTIVE PAVEMENT MARKER REMOVAL		
LENGTH	SPACING	EACH
(FEET)	(FEET)	
18288.91	80	230

X4401198 HMA SURFACE REMOVAL VARIABLE DEPTH		
LENGTH	WIDTH	SQ YD
(FEET)	(FEET)	
18288.91	22	44706

STATION	40600982	HMA SURFACE REMOVAL - BUTT JOINT	
	LENGTH (1:240)	WIDTH	SQ YD
	(FEET)	(FEET)	
174+60.31	15	22	37
224+51.52	15	22	37
332+37.00	15	22	37
425+91.00	15	22	37
427+71.00	15	22	37
467+00.00	15	22	37
TOTAL			220

STATION	40600990	TEMPORARY RAMP	
	LENGTH (1:40)	WIDTH	(SQ YD)
	(FEET)	(FEET)	
174+60.31	3	22	7
224+51.52	3	22	7
332+37.00	3	22	7
425+91.00	3	22	7
427+71.00	3	22	7
467+00.00	3	22	7
TOTAL			44

40600400	MIXTURE FOR CRACKS, JOINTS, AND FLANGE WAYS	TON
		5

40600290 BITUMINOUS MATERIALS (TACK COAT)							
FAS 636 (CHRISTIAN CO.)			LENGTH	WIDTH	AREA	RATE	POUNDS
STA.	TO	STA.	FT	FT	SQ FT	POUND/SQ FT	
174+60.31	TO	224+51.52	4991.21	22	109806.62	0.05	5490
STA. EQ: 229+87.22 bk = STA. 230+51.55 ah							
STA. EQ: 282+55.02 bk = STA. 283+84.32 ah							
STA. EQ: 312+80.17 bk = STA. 313+11.97 ah							
332+37.00	TO	411+99.79	7962.79	22	175181.38	0.05	8759
STA. EQ: 411+99.79 bk = STA. 411+85.09 ah							
411+85.09	TO	425+91.00	1405.91	22	30930.02	0.05	1547
BRIDGE OMISSION STA. 425+91.00 TO 427+71.00							
427+71.00	TO	467+00.00	3929	22	86438.00	0.05	4322
TOTAL							20118

40600625 LEVELING BINDER (MACHINE METHOD), N50								
FAS 636 (CHRISTIAN CO.)			LENGTH	WIDTH	AREA	DEPTH	RATE	TON
STA.	TO	STA.	FT	FT	SQ FT	INCH	TON/CU YD	
174+60.31	TO	224+51.52	4991.21	22	109806.6	0.75	2.05	521
STA. EQ: 229+87.22 bk = STA. 230+51.55 ah								
STA. EQ: 282+55.02 bk = STA. 283+84.32 ah								
STA. EQ: 312+80.17 bk = STA. 313+11.97 ah								
332+37.00	TO	411+99.79	7962.79	22	175181.4	0.75	2.05	831
STA. EQ: 411+99.79 bk = STA. 411+85.09 ah								
411+85.09	TO	425+91.00	1405.91	22	30930.0	0.75	2.05	147
BRIDGE OMISSION STA. 425+91.00 TO 427+71.00								
427+71.00	TO	467+00.00	3929	22	86438.0	0.75	2.05	410
TOTAL								1909

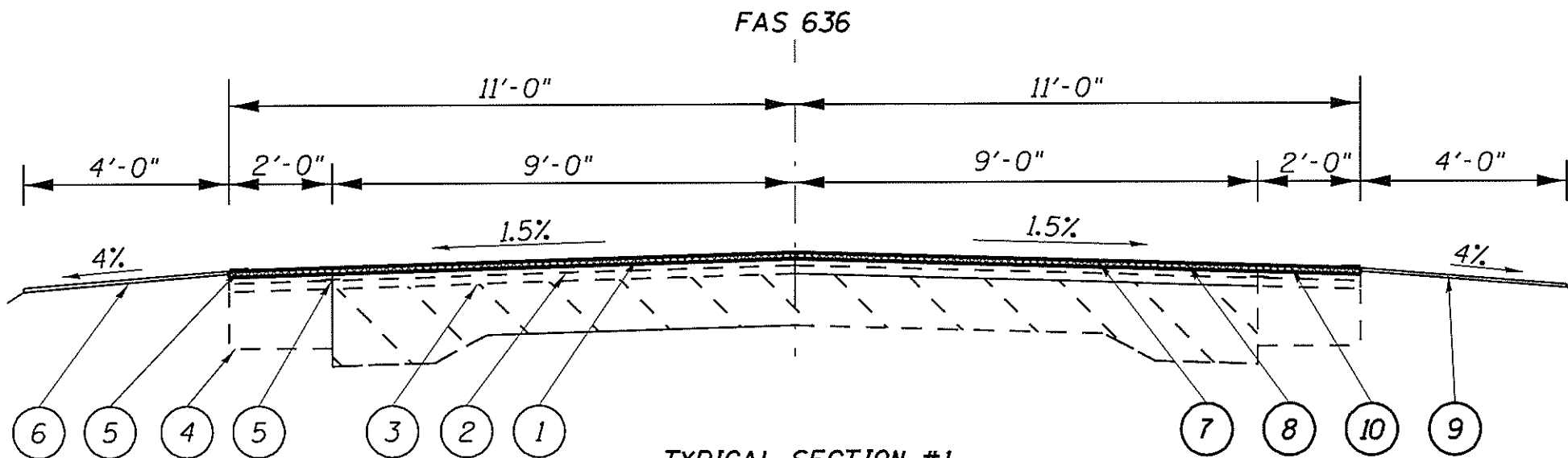
48101200 AGGREGATE SHOULDERS, TY. B (2" TO 1")				
LENGTH	WIDTH	DEPTH	RATE	TON
FT	FT	FT	TON/CU YD	
18288.91	4	0.125	2.05	1389



- BEGIN PROJECT
STA. 174+60.31
- OMISSION BEGINS
STA. 224+51.52
- STATION EQUATION
STA. 229+87.22 BK=
STA. 230+51.55 AH
- STATION EQUATION
STA. 282+55.05 BK=
STA. 283+84.32 AH
- STATION EQUATION
STA. 312+80.17 BK=
STA. 313+11.97 AH
- OMISSION ENDS
STA. 332+37.00
- BRIDGE OMISSION
STA. 425+91.00
TO STA. 427+71.00
- STATION EQUATION
STA. 229+87.22BK=
STA. 230+51.55 AH

END PROJECT
STA. 467+00.00

FILE NAME =	USER NAME = sharptd	DESIGNED -	REVISED -	STATE OF ILLINOIS DEPARTMENT OF TRANSPORTATION	LOCATION MAP		F.A.S. RTE.	SECTION	COUNTY	TOTAL SHEETS	SHEET NO.
SA\CDNTRMAINT_CAD\72K87 - FAS 636 ILL.	Edinburg Rd Christian Co. - Half Smart & A2\PL	DRAWN -	REVISED -		636	(2,3) 0-2 & (4) 0	CHRISTIAN	6	5		
Default	PLT DATE = 7/24/2018	CHECKED -	REVISED -		SCALE: SHEET ___ OF ___ SHEETS STA. ___ TO STA. ___		CONTRACT NO. 72K87				
		DATE -	REVISED -		ILLINOIS FED. AID PROJECT						



TYPICAL SECTION #1
 STA. 174+60.31 TO 224+51.52
 STA. 332+37.00 TO 467+00
 FAS 636

LEGEND

- 1- EXIST. BIT. CONC. SURF. CSE. MIX C. CLI, 1 1/2"
- 2- EXIST. BIT. CONC. LEVELING BINDER 1"
- 3- EXIST. 9-6-9 PAVEMENT W/3" BIT. RESURF.
- 4- EXIST. BIT. CONC. BASE CSE. WIDENING 6"-9"
- 5- EXIST. REFLECTIVE CRACK CONTROL TREATMENT
- 6- EXIST. EARTH SHOULDER

- 7- PROP. HMA ASPHALT SURFACE REMOVAL, VARIABLE DEPTH
- 8- PROP. LEVELING BINDER (MACHINE METHOD), N 50, 3/4"
- 9- PROP. AGGREGATE SHOULDERS, TYPE B
- 10- PROP. BITUMINOUS SURFACE TREATMENT, A-2

FILE NAME =	USER NAME = sharptd	DESIGNED -	REVISED -	STATE OF ILLINOIS DEPARTMENT OF TRANSPORTATION	TYPICALS			F.A.S. RTE.	SECTION	COUNTY	TOTAL SHEETS	SHEET NO.
S:\CONTRMAINT\CAD\72K87 - FAS 636 (Ht. Auburn Rd) Christian Co. - Half Smart & A2\PL	DRWING-sh1-6-typicals.dgn	CHECKED -	REVISED -		636	(2,3) 0-2 & (4) 0	CHRISTIAN	6	6			
Default	PLOT SCALE = 3.0000 "/td> <td>DATE -</td> <td>REVISED -</td> <td>SCALE:</td> <td>SHEET</td> <td>OF</td> <td>SHEETS</td> <td>STA.</td> <td>TO STA.</td> <td colspan="2" style="text-align: center;">CONTRACT NO. 72K87</td>	DATE -	REVISED -		SCALE:	SHEET	OF	SHEETS	STA.	TO STA.	CONTRACT NO. 72K87	
	PLOT DATE = 7/24/2018										ILLINOIS FED. AID PROJECT	