

STATE OF ILLINOIS  
DEPARTMENT OF TRANSPORTATION

| RTE | SECTION                    | COUNTY   | TOTAL SHEETS | SHEET NO |
|-----|----------------------------|----------|--------------|----------|
| VAR | D4 WEED SPRAYING 2019 (OR) | VARIOUS  | 21           | 1        |
|     |                            | ILLINOIS | 68E61        |          |

INDEX OF SHEETS:

- 1 COVER SHEET
- 2 GENERAL NOTES
- 3 SUMMARY OF QUANTITIES
- 4-13 LOCATION MAPS
- 14-20 SCHEDULE OF QUANTITIES
- 21 HERBICIDE DOSAGE CHART

**PROPOSED  
HIGHWAY PLANS**

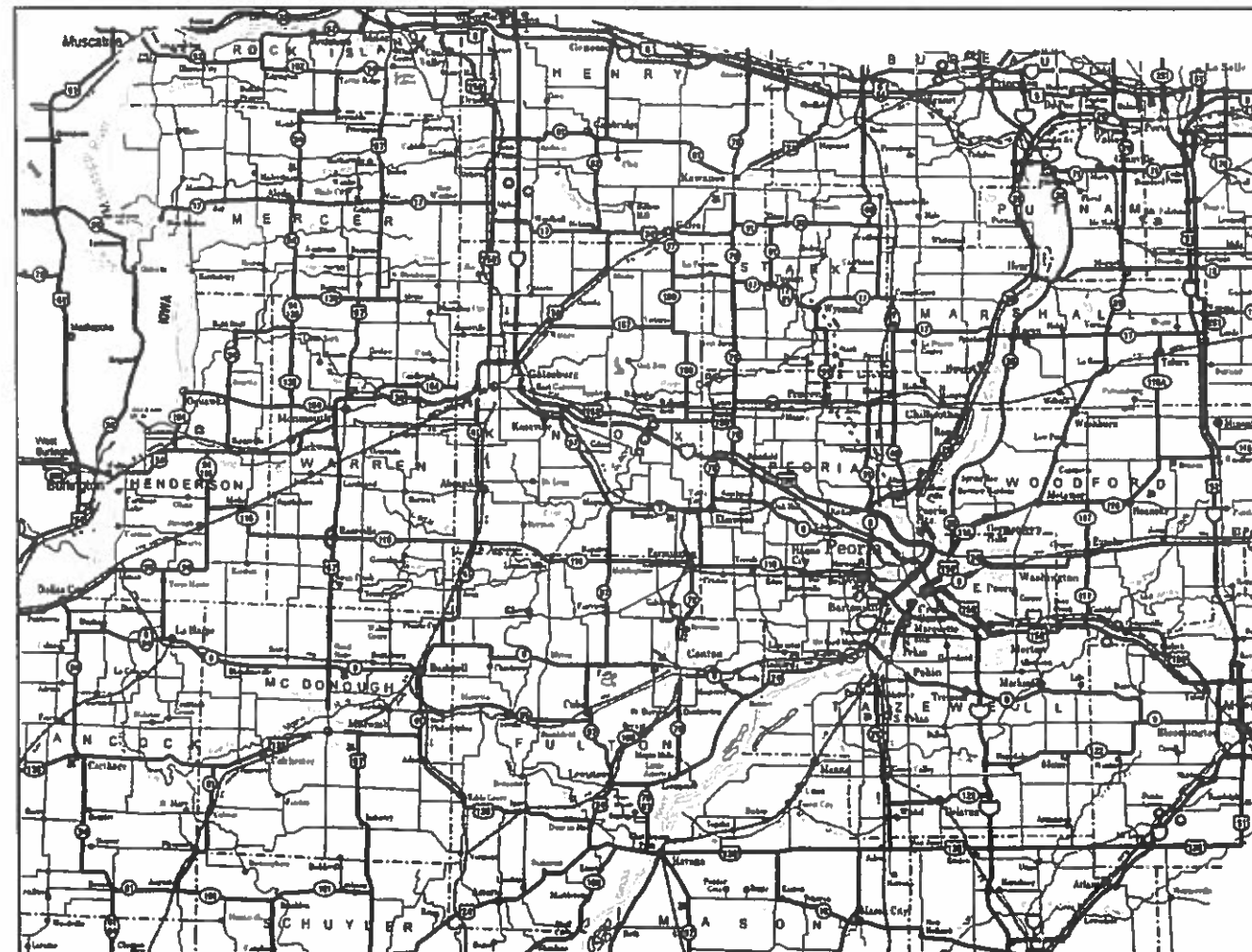
VARIOUS ROUTE  
SECTION D4 WEED SPRAYING 2019 (OR)

TYPE of IMPROVEMENT: WEED SPRAYING  
VARIOUS COUNTIES

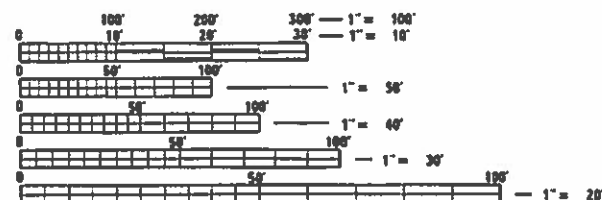
C-94-099-18

STANDARDS

- 701001-02      701301-04
- 701006-05      701311-03
- 701011-04      701426-09
- 701101-05      701901-07
- 701106-02



AREA TO BE SPRAYED: 3365.5 ACRES



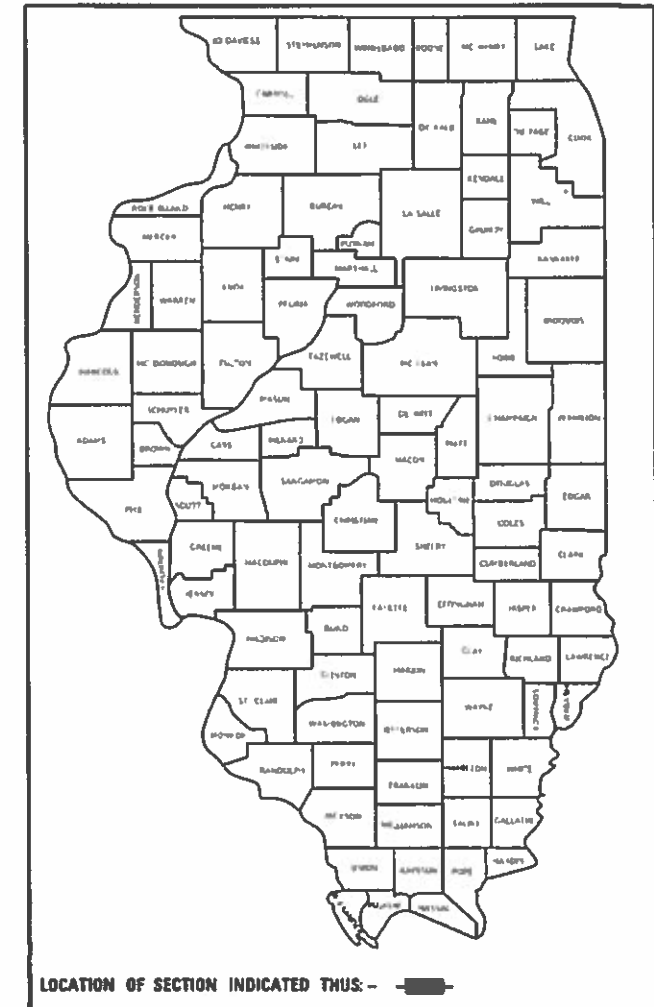
FULL SIZE PLANS HAVE BEEN PREPARED USING STANDARD ENGINEERING SCALES. REDUCED SIZED PLANS WILL NOT CONFORM TO STANDARD SCALES. IN MAKING MEASUREMENTS ON REDUCED PLANS, THE ABOVE SCALES MAY BE USED.

J.U.L.I.E.  
JOINT UTILITY LOCATION INFORMATION FOR EXCAVATION  
1-800-892-0123  
OR 811

PROJECT ENGINEER: MIKE LEWIS (309) 671-3454  
PROJECT MANAGER: ELIAS ELDERZI (309) 671-3459  
SUSAN DAVIS: (309) 671-4485

CONTRACT NO. 68E61 CATALOG NO. 035653-00D

D-94-074-18



LOCATION OF SECTION INDICATED THUS: - [shaded rectangle] -

IMPROVEMENT IS DISTRICT WIDE

STATE OF ILLINOIS  
DEPARTMENT OF TRANSPORTATION

SUBMITTED August 30, 2018  
[Signature]  
REGION THREE ENGINEER

Oct 5, 2018  
[Signature]  
ENGINEER OF DESIGN AND ENVIRONMENT

Oct 5, 2018  
[Signature]  
DIRECTOR OF INITIALS PROJECT IMPLEMENTATION

PRINTED BY THE AUTHORITY  
OF THE STATE OF ILLINOIS

## SCHEDULE OF COMPLETION DATES

| START DATE     | COUNTY                             | COMPLETION DATE | COMPLETE DATE/SIGN OFF |
|----------------|------------------------------------|-----------------|------------------------|
| APRIL 15, 2019 | TAZEWELL CO./<br>WOODFORD CO.      | APRIL 24        |                        |
| APRIL 25, 2019 | PEORIA CO.                         | MAY 3           |                        |
| MAY 6, 2019    | KNOX CO.                           | MAY 13          |                        |
| MAY 14, 2019   | TIE UP LOOSE ENDS/<br>MISSED SPOTS | MAY 15          |                        |

NOTE: DAILY INSPECTIONS BY ENGINEER IN ALL LOCATIONS

### **NO SPRAY AREAS**

- I-155 MM 22-29 NB & SB with Exceptions Listed in Plans**
- I-155 MM 25 Tremont Interchange \*Rattlesnake plant**
- I-74 MM 85 WB/EB Perennial Bed and Under High Tension Power Lines**
- I-74 MM 62 WB (See Map)**
- I-74 MM 58 WB Perennial Bed**
- I-74 MM 91-93 Downtown Peoria Planting**
- I-74 MM 92.5 WB EXIT 92**
- I-74 MM 92 EB**

Notes:

1. Areas not accessible by spraying will be hand-sprayed with spray gun reaching at least 125 feet.
2. Spray rigs shall be equipped with high-flotation tires to access soft infields.
3. Non-working equipment shall be repaired immediately with no additional time allotted to the contractor for repairs.
4. Spray operators shall keep a copy of contract spray locations in the rig at all times.
5. Wind speed must be < 15 mph in order to perform work.
6. Temperature must be > 45 in order to perform work.

**FOR INFORMATION IN CASE OF  
A CHEMICAL EMERGENCY CALL:**

**DOW AGRO AT 1-800-263-1196**

MODEL: Default  
 FILE NAME: P:\1108\B&E\BIDD\ITEC\Illinois.gov\FW\DOT\Documents\BIDD\Office\BIDD\et - 68E61\CADD\B&E\CAD\Drawings\BIDD\68E61-CADD.dgn

|  |                               |            |           |   |                      |        |       |    |              |         |                           |                 |                    |  |
|--|-------------------------------|------------|-----------|---|----------------------|--------|-------|----|--------------|---------|---------------------------|-----------------|--------------------|--|
|  | USER NAME = eversct           | DESIGNED - | REVISED - | <b>STATE OF ILLINOIS<br/>DEPARTMENT OF TRANSPORTATION</b> | <b>GENERAL NOTES</b> |        |       |    | F.A.<br>RTE. | SECTION | COUNTY                    | TOTAL<br>SHEETS | SHEET<br>NO.       |  |
|  |                               | DRAWN -    | REVISED - |   |                      |        |       |    |              |         |                           |                 |                    |  |
|  | PLOT SCALE = 100,0000 ' / in. | CHECKED -  | REVISED - |   |                      |        |       |    |              |         |                           | 21              | 2                  |  |
|  | PLOT DATE = 8/31/2018         | DATE -     | REVISED - |   |                      | SCALE: | SHEET | OF | SHEETS       | STA.    | TO                        | STA.            |                    |  |
|  |                               |            |           |   |                      |        |       |    |              |         | ILLINOIS FED. AID PROJECT |                 | CONTRACT NO. 68E61 |  |



011-49408-7900-0100      011-49408-7900-0118

| CODE NO. | ITEM                            | UNIT   | TOTAL QUANTITY | CONSTRUCTION CODE |             |
|----------|---------------------------------|--------|----------------|-------------------|-------------|
|          |                                 |        |                | 100 % STATE       | 100 % STATE |
|          |                                 |        |                | VARIOUS COUNTIES  |             |
|          |                                 |        |                | 07A0              | 07A0        |
|          |                                 |        |                | 0031              | 0031        |
| 67100100 | MOBILIZATION                    | L SUM  | 1              | 0.5               | 0.5         |
| K0029618 | WEED CONTROL, BROADLEAF IN TURF | GALLON | 157            | 78                | 79          |
|          |                                 |        |                |                   |             |
|          |                                 |        |                |                   |             |
|          |                                 |        |                |                   |             |
|          |                                 |        |                |                   |             |
|          |                                 |        |                |                   |             |
|          |                                 |        |                |                   |             |

MODEL: D:\draft  
 FILE NAME: P:\110848\BID\NTEG\Illinois.gov\P\W\DOT\Documents\DOT\_Offices\Director\_A\Projects\DA\_68E61\CADD\DA\Caddrawings\DA68E61-CADD.dgn

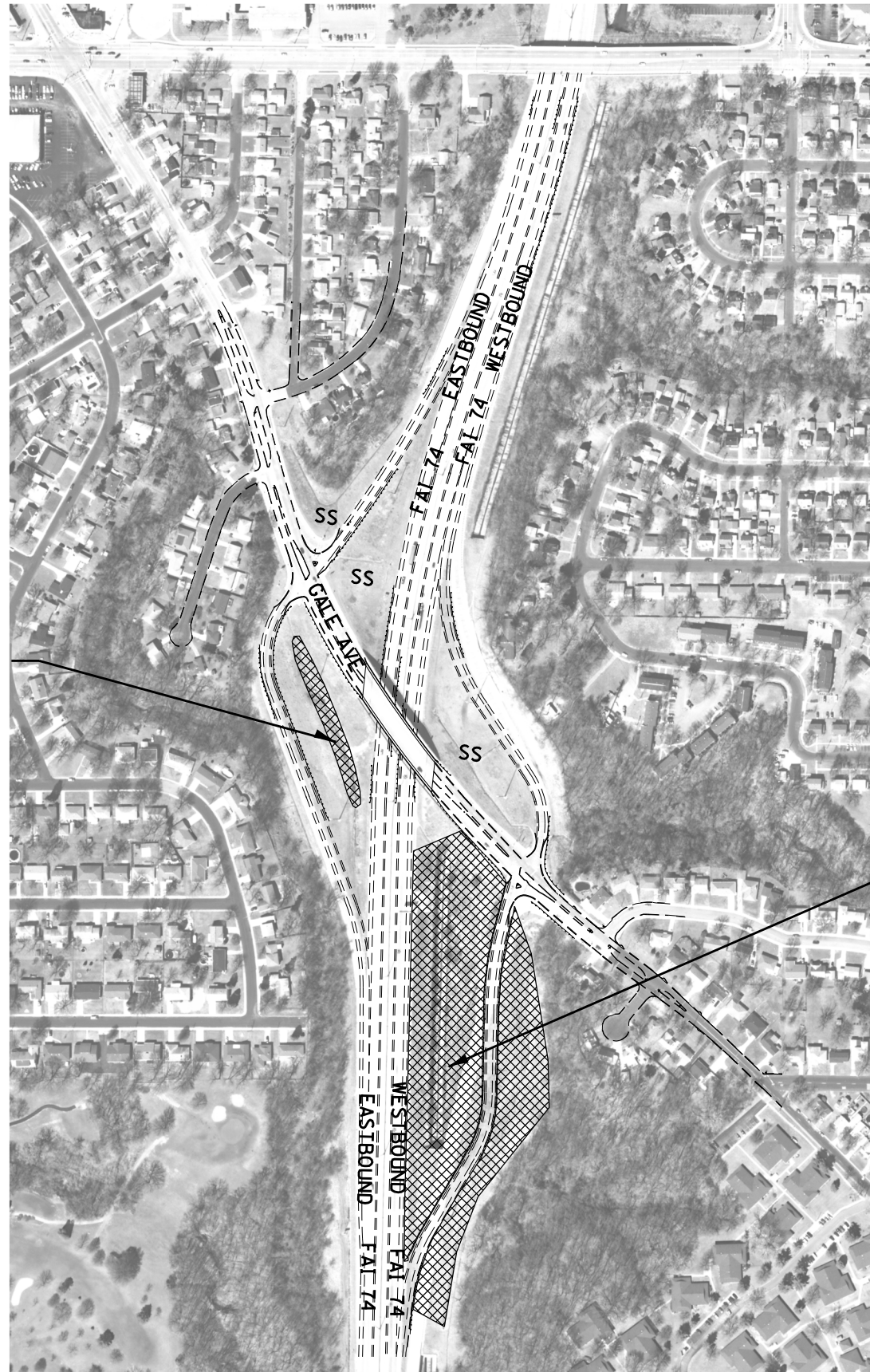
|                              |            |           |
|------------------------------|------------|-----------|
| USER NAME = everscl          | DESIGNED - | REVISED - |
|                              | DRAWN -    | REVISED - |
| PLOT SCALE = 100.0000' / in. | CHECKED -  | REVISED + |
| PLOT DATE = 8/31/2018        | DATE -     | REVISED + |

**STATE OF ILLINOIS  
DEPARTMENT OF TRANSPORTATION**

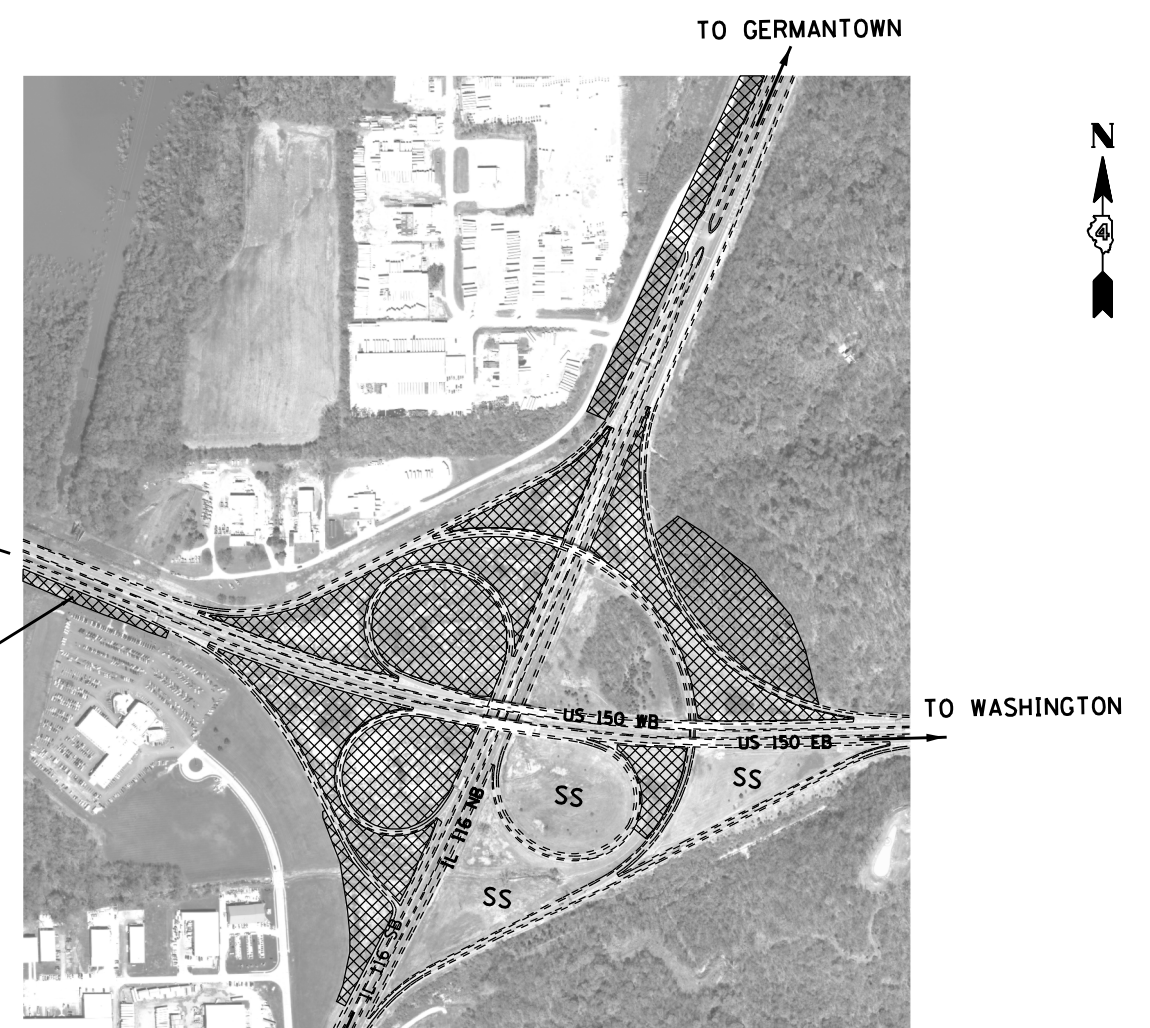
**SUMMARY OF QUANTITIES**

SCALE:      SHEET      OF      SHEETS      STA.      TO STA.

| F.A. RTE. | SECTION                    | COUNTY   | TOTAL SHEETS       | SHEET NO. |
|-----------|----------------------------|----------|--------------------|-----------|
| VAR.      | D4 WEED SPRAYING 2019 (GR) | VARIOUS  | 21                 | 3         |
|           |                            |          | CONTRACT NO. 68E61 |           |
|           |                            | ILLINOIS | FED. AID PROJECT   |           |



MM 90 Exit I-74 / GALE AVE. INTERCHANGE



US 150 / IL 116 INTERCHANGE

| LEGEND |   |
|--------|---|
|        | SS = Spot Spraying                                      |
|        | BR = Brush  |
|        | BS = Blanket Spraying                                   |
|        | SS* = May Require Hand Spray/Back Pack                  |
|        | TSL = Teasel  |
|        | THSL = Thistle  |
|        | CV = Crown Vetch  |
|        | FL = Fence Line   |
|        | (++) = Engineer must be present during spray operations |
|        | NS = No Spray   |
|        | Wet = Area is Seasonally Wet                            |
|        | PR = Prairie - Consult with R.E.                        |
|        | Edges = Spray mowed edge only & consult with R.E.       |
|        | Heavy = Heavy Infestation                               |
|        | SRRRA = Spoon River Rest Area                           |
|        | STP = Steep Hillside                                    |
|        | (*) = For Information Only                              |



NOT TO SCALE

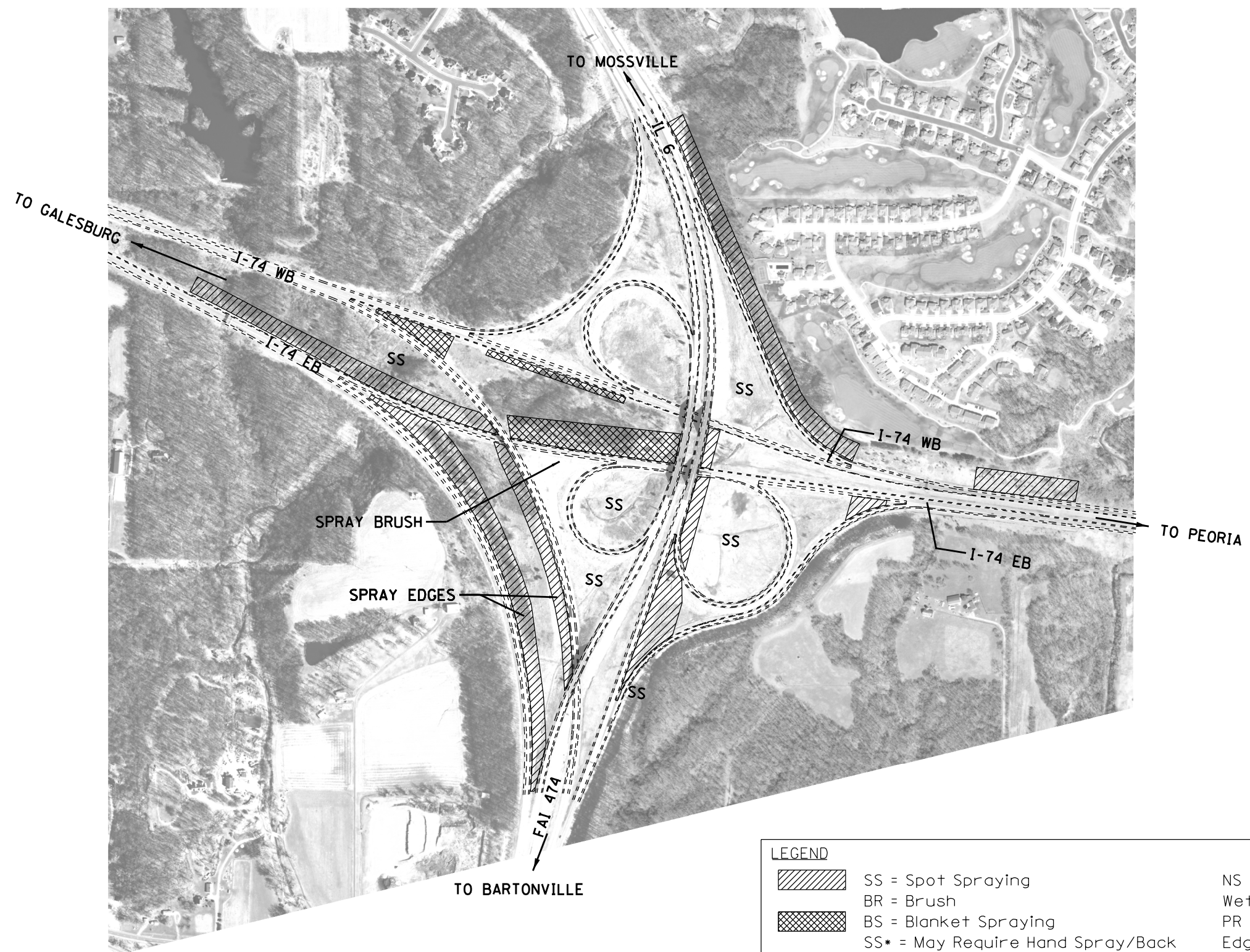
MODEL: Default  
 FILE: \\nas0101\B&E\ID\NTEC\Illinois\pov\RW\DOT\Documents\18DOT\_Offices\18DOT\_68E61\CADD\NTEC\CADD\18DOT\_68E61\CADD.dwg  
 MODEL: Default  
 FILE: \\nas0101\B&E\ID\NTEC\Illinois\pov\RW\DOT\Documents\18DOT\_Offices\18DOT\_68E61\CADD\NTEC\CADD\18DOT\_68E61\CADD.dwg



|                              |            |           |
|------------------------------|------------|-----------|
| USER NAME = eversct          | DESIGNED - | REVISED - |
|                              | DRAWN -    | REVISED - |
| PLOT SCALE = 100,0000' / in. | CHECKED -  | REVISED - |
| PLOT DATE = 8/31/2018        | DATE -     | REVISED - |

STATE OF ILLINOIS  
DEPARTMENT OF TRANSPORTATION

| LOCATION MAP                                    |       |           |              |
|---|-------|-----------|--------------|
| I-74 /GALE AVE. AND US 150 /IL 116 INTERCHANGES |       |           |              |
| SCALE:  | SHEET | OF SHEETS | STA. TO STA. |

| F.A. RTE.          | SECTION                   | COUNTY           | TOTAL SHEETS | SHEET NO. |
|--------------------|---------------------------|------------------|--------------|-----------|
| VAR.               | D4 WEEK SPRAYING 2019(OR) | VARIOUS          | 21           | 4         |
| CONTRACT NO. 68E61 |                           |                  |              |           |
| ILLINOIS           |                           | FED. AID PROJECT |              |           |



| LEGEND  |   |
|---|---|
|  | SS = Spot Spraying                                      |
|   | BR = Brush  |
|  | BS = Blanket Spraying                                   |
|   | SS* = May Require Hand Spray/Back Pack                  |
|   | TSL = Teasel  |
|   | THSL = Thistle  |
|   | CV = Crown Vetch  |
|   | FL = Fence Line   |
|   | (++) = Engineer must be present during spray operations |
|   | NS = No Spray   |
|   | Wet = Area is Seasonally Wet                            |
|   | PR = Prairie - Consult with R.E.                        |
|   | Edges = Spray mowed edge only & consult with R.E.       |
|   | Heavy = Heavy Infestation                               |
|   | SRRA = Spoon River Rest Area                            |
|   | STP = Steep Hillside                                    |
|   | (*) = For Information Only                              |

NOT TO SCALE

MODEL: Default  
 FILE: \\mhcpc-pw01\B&E\ID\NTEC\Illinois\gov\PWIDOT\Documents\DOT\_Offices\Director\Projects\CDL\_68E61\CADD\B&E\CDL68E61-CADD.dgn

|                              |            |           |
|------------------------------|------------|-----------|
| USER NAME = eversct          | DESIGNED - | REVISED - |
|                              | DRAWN -    | REVISED - |
| PLOT SCALE = 100,0000' / in. | CHECKED -  | REVISED - |
| PLOT DATE = 8/31/2018        | DATE -     | REVISED - |

**STATE OF ILLINOIS  
DEPARTMENT OF TRANSPORTATION**

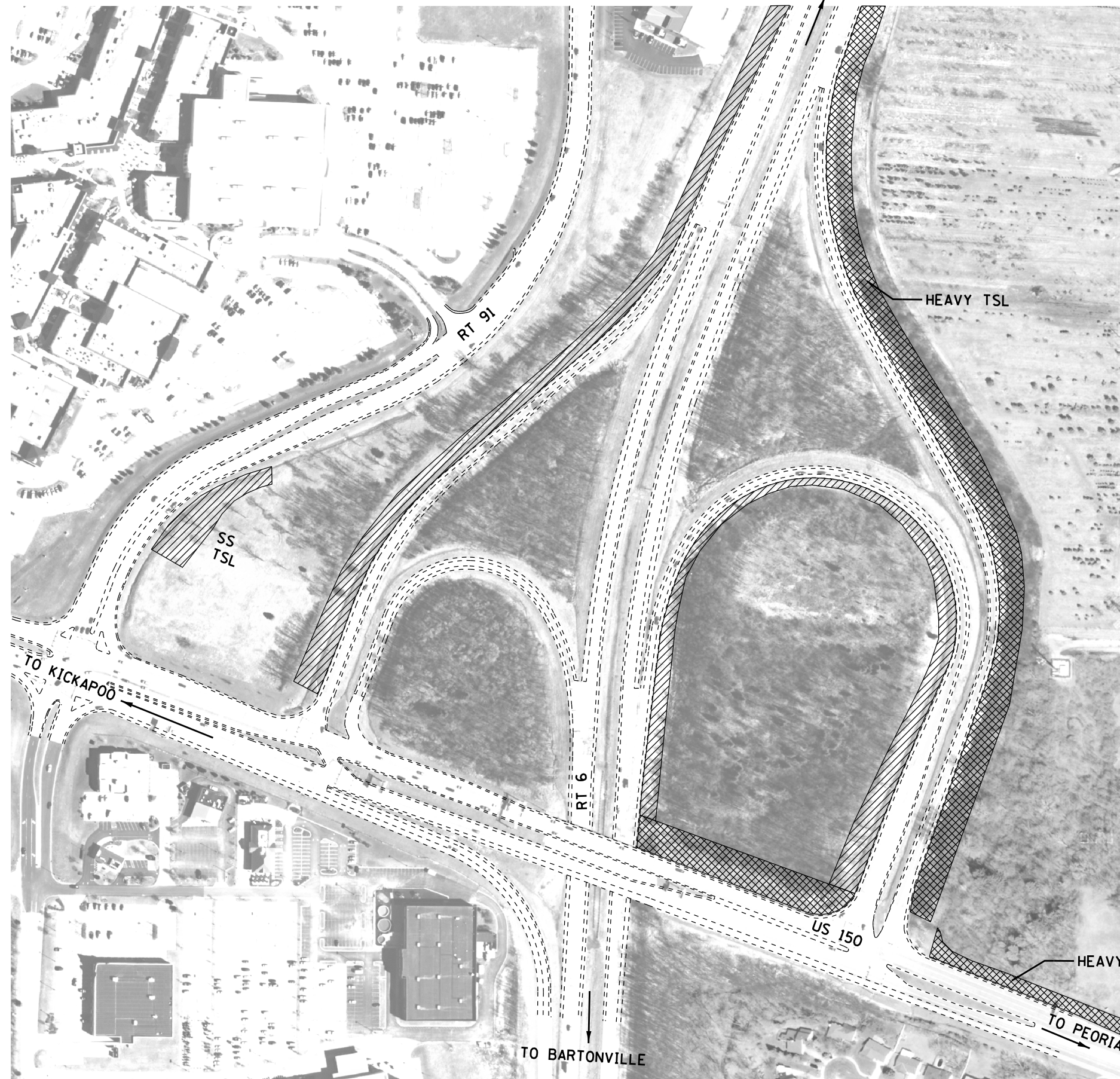
**LOCATION MAP (EXIT 87A & 87B)  
I-74, I-474, IL 6 INTERCHANGE**

SCALE: SHEET OF SHEETS STA. TO STA.




| F.A. RTE. | SECTION                   | COUNTY   | TOTAL SHEETS       | SHEET NO. |
|-----------|---------------------------|----------|--------------------|-----------|
| VAR.      | D4 WEEK SPRAYING 2019(OR) | VARIOUS  | 21                 | 5         |
|           |                           |          | CONTRACT NO. 68E61 |           |
|           |                           | ILLINOIS | FED. AID PROJECT   |           |



TO MOSSVILLE



**LEGEND**

-  SS = Spot Spraying
-  BR = Brush
-  BS = Blanket Spraying
- SS\* = May Require Hand Spray/Back Pack
- TSL = Teasel
- THSL = Thistle
- CV = Crown Vetch
- FL = Fence Line
- (++) = Engineer must be present during spray operations
- NS = No Spray
- Wet = Area is Seasonally Wet
- PR = Prairie - Consult with R.E.
- Edges = Spray mowed edge only & consult with R.E.
- Heavy = Heavy Infestation
- SRRA = Spoon River Rest Area
- STP = Steep Hillside
- (\*) = For Information Only

NOT TO SCALE

MODEL: Default  
FILE NAME: p:\011084\FEED\INTEG.MXD  
PROJECTS\DOT\Projects\DOT\Office\District 4\Projects\DOT\_68E61\CADD\01\CADD\Drawings\68E61-CADD.dwg

|                              |            |           |
|------------------------------|------------|-----------|
| USER NAME = eversct          | DESIGNED - | REVISED - |
|                              | DRAWN -    | REVISED - |
| PLOT SCALE = 100.0000' / In. | CHECKED -  | REVISED - |
| PLOT DATE = 8/31/2018        | DATE -     | REVISED - |

**STATE OF ILLINOIS  
DEPARTMENT OF TRANSPORTATION**

**LOCATION MAP (EXIT 2)  
RT 6 / US 150 INTERCHANGE**

SCALE: SHEET OF SHEETS STA. TO STA.

| F.A. RTE. | SECTION                    | COUNTY   | TOTAL SHEETS       | SHEET NO. |
|-----------|----------------------------|----------|--------------------|-----------|
| VAR.      | D4 WEED SPRAYING 2019 (OR) | VARIOUS  | 21                 | 6         |
|           |                            |          | CONTRACT NO. 68E61 |           |
|           |                            | ILLINOIS | FED. AID PROJECT   |           |

TO EDELSTEIN



STEEP HILLSIDE  
HEAVY THSL

TO MOSSVILLE

RT 6

RT 40 /  
KNOXVILLE

SS  
PR ++

SS  
PR ++



TO PEORIA

TO PEORIA

**SYMBOL NOTES:**

- 1. INFIELDS HAVE GOOD QUALITY PRAIRIE, SPOT SPRAY INDIVIDUAL TSL PLANTS ONLY.
- 2. AREAS HATCHED HAVE DENSE TEASEL COLONIES.

**LEGEND**

-  SS = Spot Spraying
-  BS = Blanket Spraying
- BR = Brush
- SS\* = May Require Hand Spray/Back Pack
- TSL = Teasel
- THSL = Thistle
- CV = Crown Vetch
- FL = Fence Line
- (++) = Engineer must be present during spray operations
- NS = No Spray
- Wet = Area is Seasonally Wet
- PR = Prairie - Consult with R.E.
- Edges = Spray mowed edge only & consult with R.E.
- Heavy = Heavy Infestation
- SRRA = Spoon River Rest Area
- STP = Steep Hillside
- (\*) = For Information Only

NOT TO SCALE

MODEL: Default  
FILE: \\mspc-pw01\B&E\BID\ITEC\Illinois\pwr\pwr\DOT\Documents\DOT\_Offices\DOT\68E61\CADD\68E61\_CADD.dwg

|                              |            |           |
|------------------------------|------------|-----------|
| USER NAME = eversct          | DESIGNED - | REVISED - |
|                              | DRAWN -    | REVISED - |
| PLOT SCALE = 100,0000' / in. | CHECKED -  | REVISED - |
| PLOT DATE = 8/31/2018        | DATE -     | REVISED - |

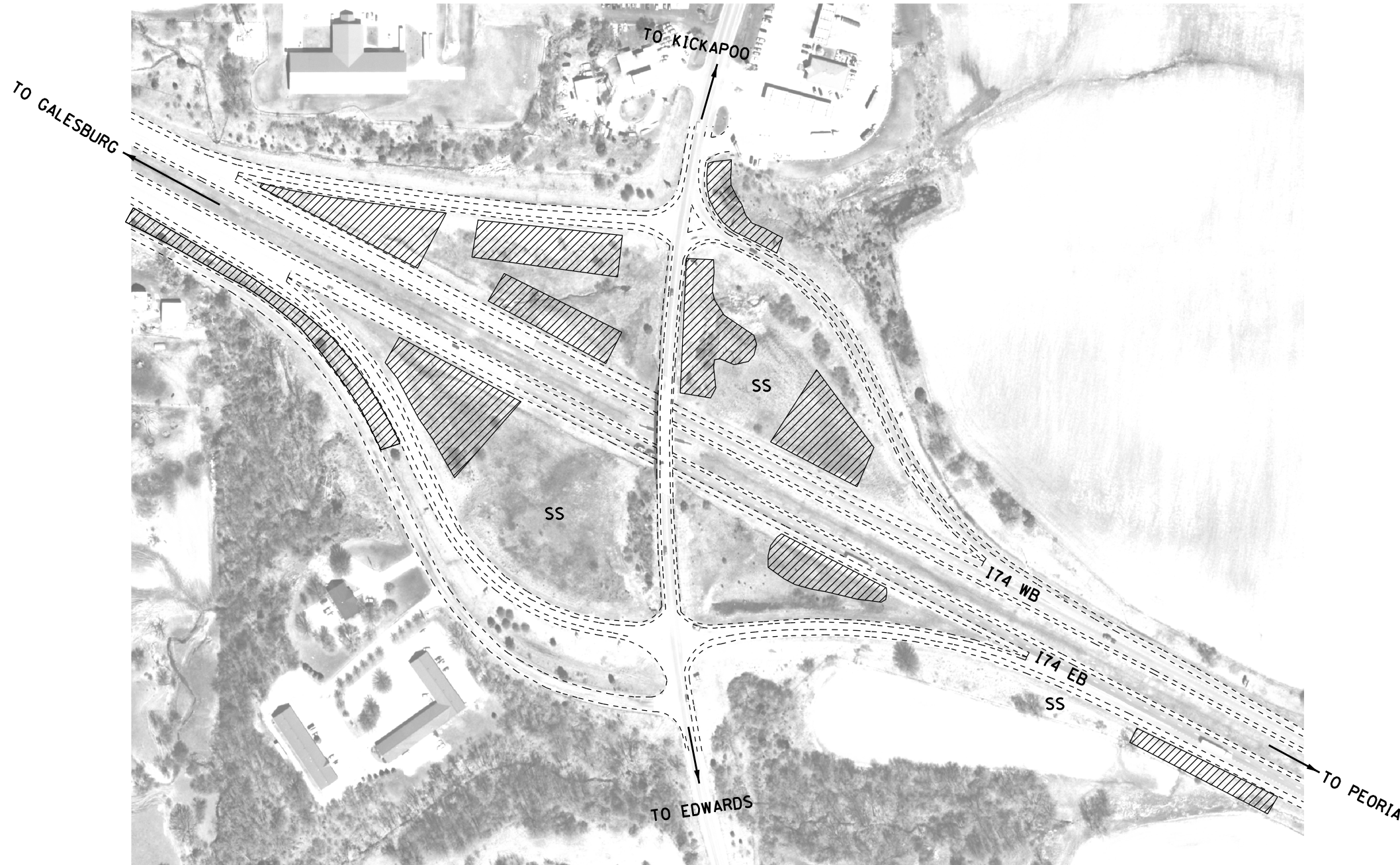
**STATE OF ILLINOIS  
DEPARTMENT OF TRANSPORTATION**

**LOCATION MAP (EXIT 6)  
RT 6 /RT 40 /KNOXVILLE INTERCHANGE**

SCALE: SHEET OF SHEETS STA. TO STA.

|           |                            |                           |                    |           |
|-----------|----------------------------|---------------------------|--------------------|-----------|
| F.A. RTE. | SECTION                    | COUNTY                    | TOTAL SHEETS       | SHEET NO. |
| VAR.      | D4 WEED SPRAYING 2019 (OR) | VARIOUS                   | 21                 | 7         |
|           |                            |                           | CONTRACT NO. 68E61 |           |
|           |                            | ILLINOIS FED. AID PROJECT |                    |           |





**LEGEND**



SS = Spot Spraying



BS = Blanket Spraying

SS\* = May Require Hand Spray/Back Pack

TSL = Teasel

THSL = Thistle

CV = Crown Vetch

FL = Fence Line

(++) = Engineer must be present during spray operations

NS = No Spray

Wet = Area is Seasonally Wet

PR = Prairie - Consult with R.E.

Edges = Spray mowed edge only & consult with R.E.

Heavy = Heavy Infestation

SRRA = Spoon River Rest Area

STP = Steep Hillside

(\*) = For Information Only



NOT TO SCALE

MODEL: Default  
 FILE: \\nas0101\B&E\ID\NTEC\Illinois\gov\PIWDOT\Documents\DOT\_Offices\Director\_A\Projects\04\_68E61\CADD\04\CADD\Drawings\68E61-CADD.dwg

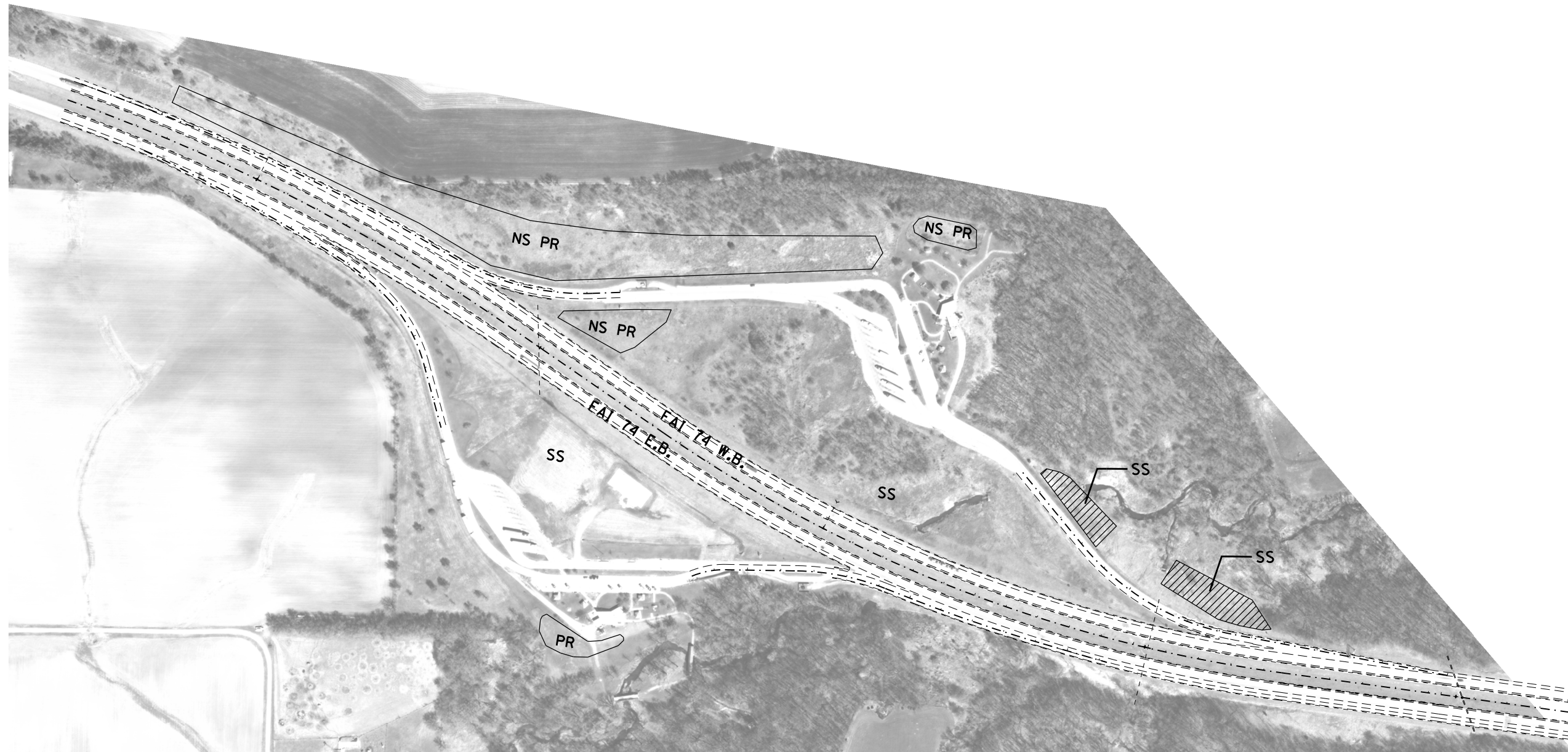
|                              |            |           |
|------------------------------|------------|-----------|
| USER NAME = eversct          | DESIGNED - | REVISED - |
|                              | DRAWN -    | REVISED - |
| PLOT SCALE = 100,0000' / in. | CHECKED -  | REVISED - |
| PLOT DATE = 8/31/2018        | DATE -     | REVISED - |

**STATE OF ILLINOIS  
DEPARTMENT OF TRANSPORTATION**



**LOCATION MAP (EXIT 82)  
I-74 / KICKAPOO / EDWARDS INTERCHANGE**

SCALE: SHEET OF SHEETS STA. TO STA.

| F.A. RTE. | SECTION                    | COUNTY   | TOTAL SHEETS       | SHEET NO. |
|-----------|----------------------------|----------|--------------------|-----------|
| VAR.      | D4 WEED SPRAYING 2019 (OR) | VARIES   | 21                 | 8         |
|           |                            |          | CONTRACT NO. 68E61 |           |
|           |                            | ILLINOIS | FED. AID PROJECT   |           |



**LEGEND**

- |   |   |   |
|---|---|---|
|  | SS = Spot Spraying                                      | NS = No Spray                                     |
|  | BR = Brush  | Wet = Area is Seasonally Wet                      |
|   | BS = Blanket Spraying                                   | PR = Prairie - Consult with R.E.                  |
|   | SS* = May Require Hand Spray/Back Pack                  | Edges = Spray mowed edge only & consult with R.E. |
|   | TSL = Teasel  | Heavy = Heavy Infestation                         |
|   | THSL = Thistle  | SRRA = Spoon River Rest Area                      |
|   | CV = Crown Vetch  | STP = Steep Hillside                              |
|   | FL = Fence Line   | (*) = For Information Only                        |
|   | (++) = Engineer must be present during spray operations |   |

NOT TO SCALE

MODEL: Default  
 FILE: \\nas01c.psu.edu\B&E\ID\NTEC\Illinois.gov\PR\WIDOT\Documents\DOT\_Offices\Director\Projects\I-74\68E61\CADD\RA\CADD\RA\I-74\68E61-CADD.dwg

|                              |            |           |
|------------------------------|------------|-----------|
| USER NAME = eversct          | DESIGNED - | REVISED - |
|                              | DRAWN -    | REVISED - |
| PLOT SCALE = 100,0000' / in. | CHECKED -  | REVISED - |
| PLOT DATE = 8/31/2018        | DATE -     | REVISED - |

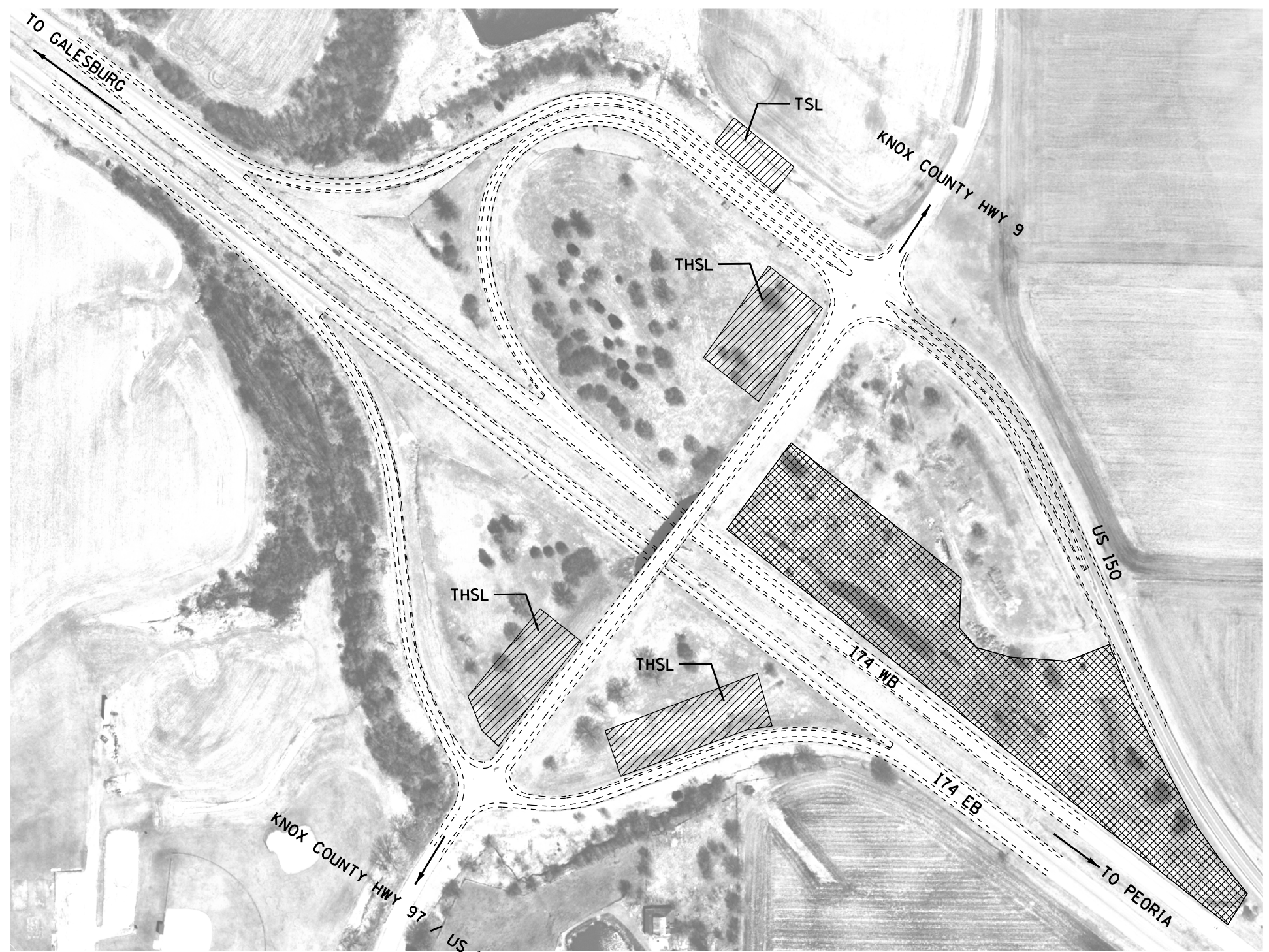
**STATE OF ILLINOIS  
DEPARTMENT OF TRANSPORTATION**

**LOCATION MAP (MM62)  
I-74 SPOON RIVER REST AREA**

SCALE: SHEET OF SHEETS STA. TO STA.

| F.A. RTE.          | SECTION                   | COUNTY   | TOTAL SHEETS     | SHEET NO. |
|--------------------|---------------------------|----------|------------------|-----------|
| VAR.               | D4 WEEK SPRAYING 2019(OR) | VARIOUS  | 21               | 9         |
| CONTRACT NO. 68E61 |                           |          |                  |           |
|                    |                           | ILLINOIS | FED. AID PROJECT |           |





| LEGEND |   |
|--------|---|
|        | SS = Spot Spraying                                      |
|        | BR = Brush  |
|        | BS = Blanket Spraying                                   |
|        | SS* = May Require Hand Spray/Back Pack                  |
|        | TSL = Teasel  |
|        | THSL = Thistle  |
|        | CV = Crown Vetch  |
|        | FL = Fence Line   |
|        | (++) = Engineer must be present during spray operations |
|        | NS = No Spray   |
|        | Wet = Area is Seasonally Wet                            |
|        | PR = Prairie - Consult with R.E.                        |
|        | Edges = Spray mowed edge only & consult with R.E.       |
|        | Heavy = Heavy Infestation                               |
|        | SRRA = Spoon River Rest Area                            |
|        | STP = Steep Hillside                                    |
|        | (* ) = For Information Only                             |

NOT TO SCALE

|                               |            |           |
|-------------------------------|------------|-----------|
| USER NAME = eversct           | DESIGNED - | REVISED - |
|                               | DRAWN -    | REVISED - |
| PLOT SCALE = 100,0000 ' / in. | CHECKED -  | REVISED - |
| PLOT DATE = 8/31/2018         | DATE -     | REVISED - |

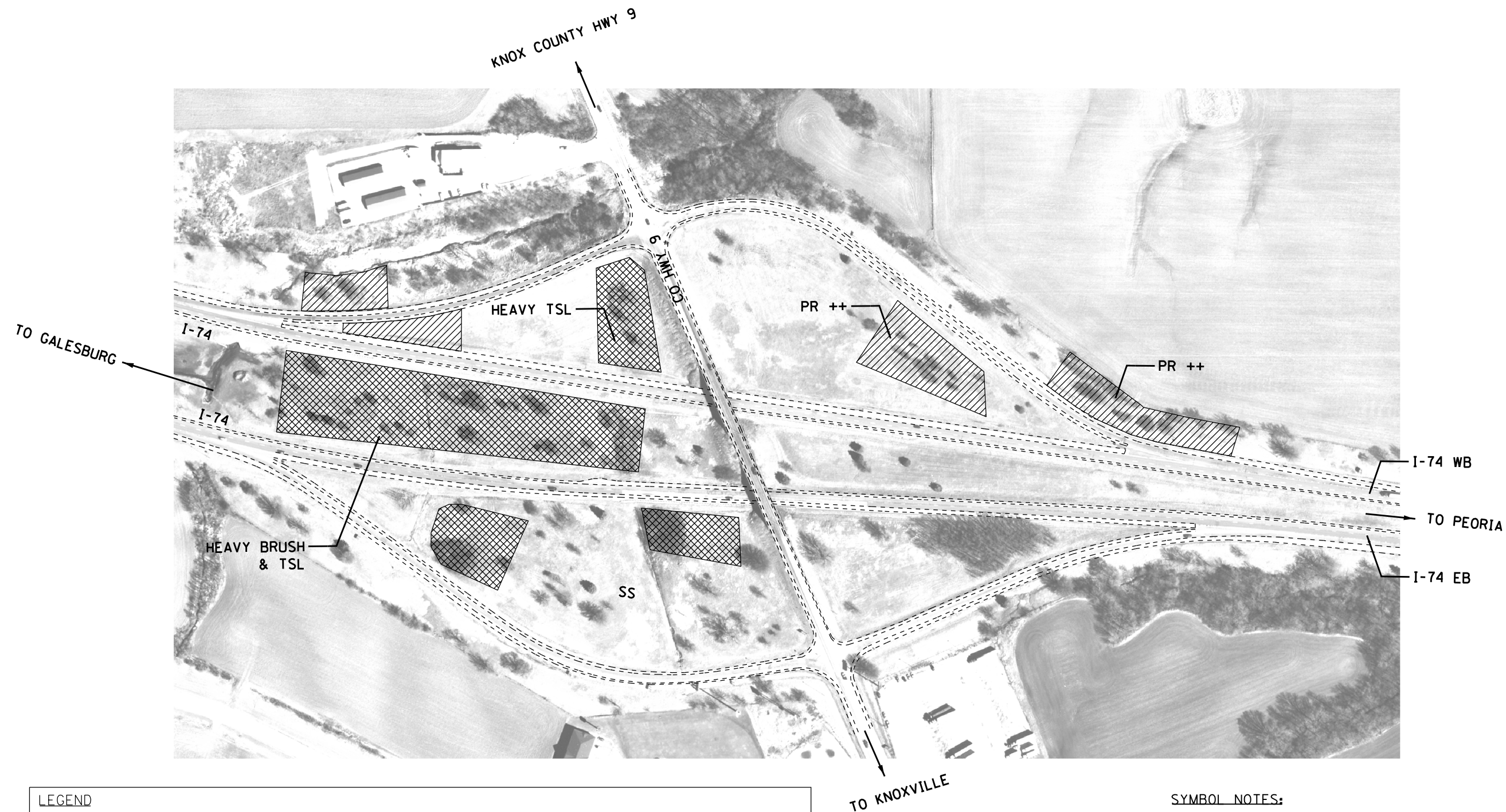
**STATE OF ILLINOIS  
DEPARTMENT OF TRANSPORTATION**

**LOCATION MAP (EXIT 54)  
I-74 /CO. HWY 97 & US 150 INTERCHANGE**

|        |                 |              |
|--------|-----------------|--------------|
| SCALE: | SHEET OF SHEETS | STA. TO STA. |
|--------|-----------------|--------------|

| F.A. RTE.                 | SECTION                    | COUNTY  | TOTAL SHEETS       | SHEET NO. |
|---------------------------|----------------------------|---------|--------------------|-----------|
| VAR.                      | D4 WEED SPRAYING 2019 (OR) | VARIOUS | 21                 | 10        |
|                           |                            |         | CONTRACT NO. 68E61 |           |
| ILLINOIS FED. AID PROJECT |                            |         |                    |           |





| LEGEND |   |
|--------|---|
|        | SS = Spot Spraying                                      |
|        | BR = Brush  |
|        | BS = Blanket Spraying                                   |
|        | SS* = May Require Hand Spray/Back Pack                  |
|        | TSL = Teasel  |
|        | THSL = Thistle  |
|        | CV = Crown Vetch  |
|        | FL = Fence Line   |
|        | (++) = Engineer must be present during spray operations |
|        | NS = No Spray   |
|        | Wet = Area is Seasonally Wet                            |
|        | PR = Prairie - Consult with R.E.                        |
|        | Edges = Spray mowed edge only & consult with R.E.       |
|        | Heavy = Heavy Infestation                               |
|        | SRRA = Spoon River Rest Area                            |
|        | STP = Steep Hillside                                    |
|        | (*) = For Information Only                              |

- SYMBOL NOTES:**
1. INFIELDS ON NE & NW HAVE GOOD PRAIRIE, SPOT SPRAY TEASEL COLONIES AND INDIVIDUAL SPROUTS ONLY.
  2. BLANKET SPRAY ONLY DESIGNATED AREAS.

NOT TO SCALE

MODEL: Default  
 FILE: \\snp\cadd\68E61\CD00\Drawings\DOT\Office\Drawings\68E61\CD00\Drawings\68E61\CD00.dgn

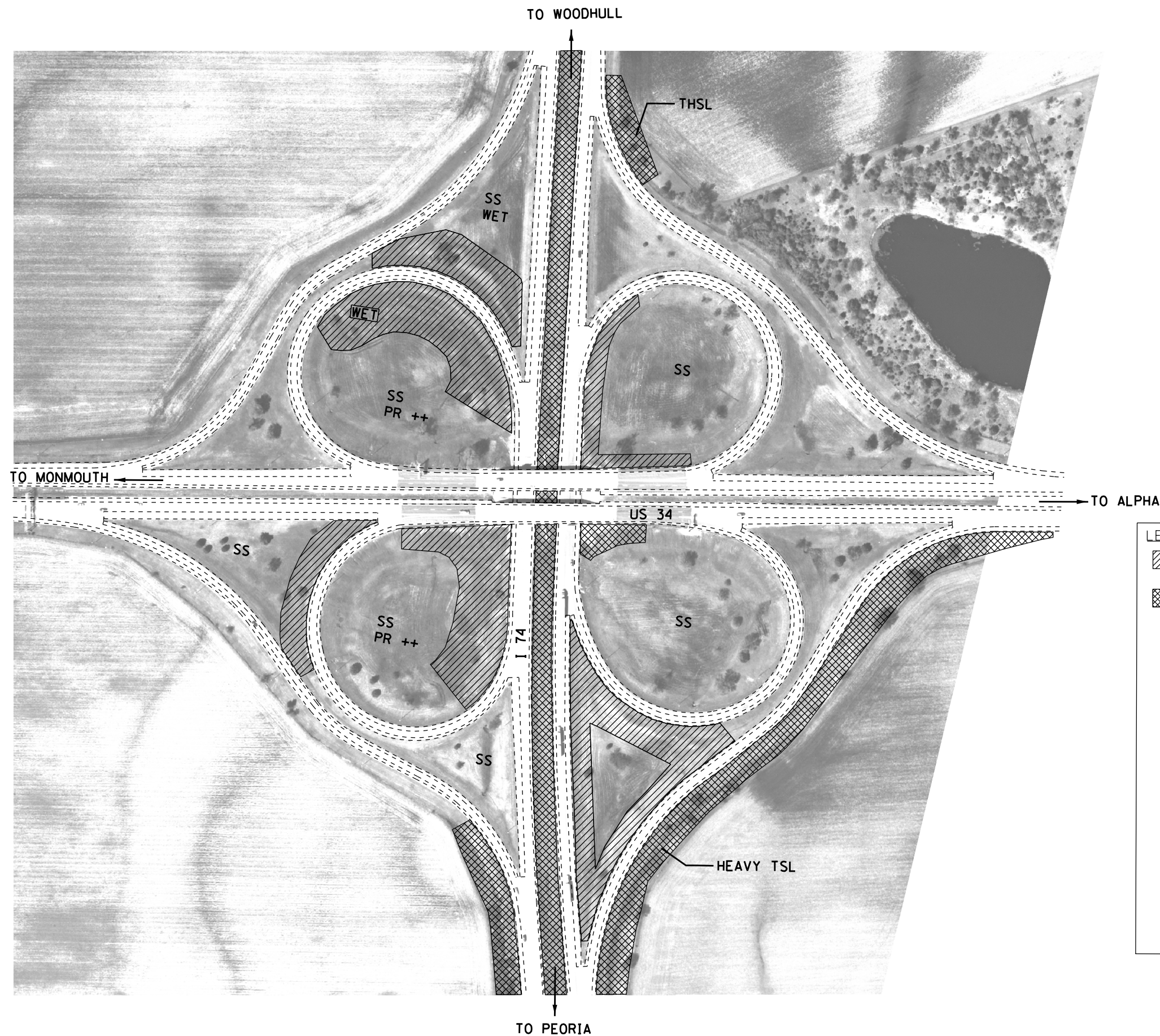
|                              |            |           |
|------------------------------|------------|-----------|
| USER NAME = eversct          | DESIGNED - | REVISED - |
|                              | DRAWN -    | REVISED - |
| PLOT SCALE = 100,0000' / in. | CHECKED -  | REVISED - |
| PLOT DATE = 8/31/2018        | DATE -     | REVISED - |

**STATE OF ILLINOIS**  
**DEPARTMENT OF TRANSPORTATION**

**LOCATION MAP (EXIT 51)**  
**I-74 /KNOXVILLE INTERCHANGE**

SCALE: SHEET OF SHEETS STA. TO STA.

| F.A. RTE. | SECTION                    | COUNTY   | TOTAL SHEETS       | SHEET NO. |
|-----------|----------------------------|----------|--------------------|-----------|
| VAR.      | D4 WEED SPRAYING 2019 (OR) | VARIOUS  | 21                 | 11        |
|           |                            |          | CONTRACT NO. 68E61 |           |
|           |                            | ILLINOIS | FED. AID PROJECT   |           |



**SYMBOL NOTES:**

1. NE & NW INFIELDS MAY BE WET.

**LEGEND**

- SS = Spot Spraying
- BR = Brush
- BS = Blanket Spraying
- SS\* = May Require Hand Spray/Back Pack
- TSL = Teasel
- THSL = Thistle
- CV = Crown Vetch
- FL = Fence Line
- (++) = Engineer must be present during spray operations
- NS = No Spray
- Wet = Area is Seasonally Wet
- PR = Prairie - Consult with R.E.
- Edges = Spray mowed edge only & consult with R.E.
- Heavy = Heavy Infestation
- SRRA = Spoon River Rest Area
- STP = Steep Hillside
- (\*) = For Information Only

NOT TO SCALE

MODEL: Default  
 FILE: \\s:\gis\work\686E61\CD00\Documents\DOT\_Offices\DI\refct\_4\Project\CD00\_686E61\CADD\Map\CADD\map\686E61\_CD00.dwg

|                              |            |           |
|------------------------------|------------|-----------|
| USER NAME = eversct          | DESIGNED - | REVISED - |
|                              | DRAWN -    | REVISED - |
| PLOT SCALE = 100,0000' / in. | CHECKED -  | REVISED - |
| PLOT DATE = 8/31/2018        | DATE -     | REVISED - |

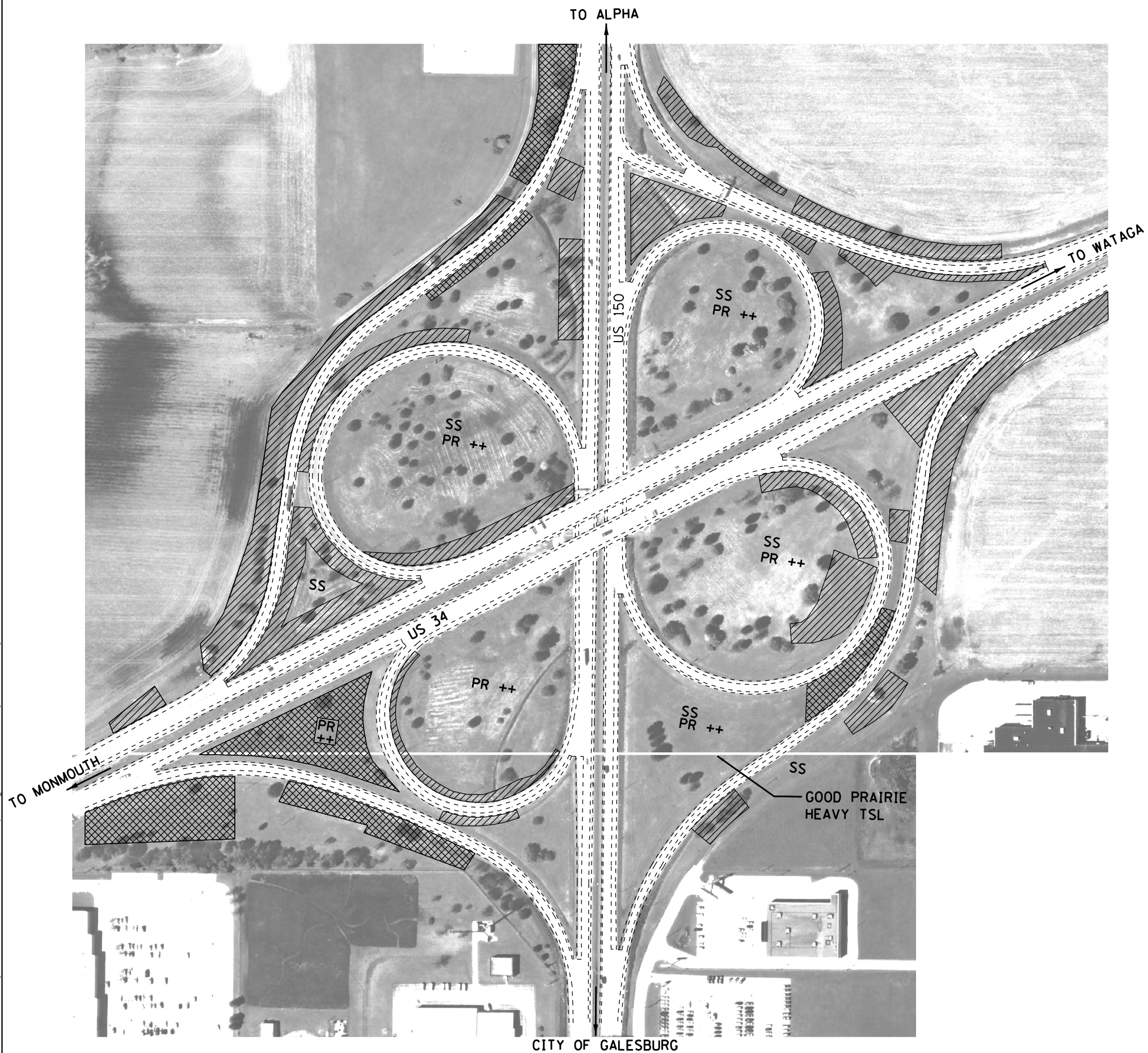
**STATE OF ILLINOIS  
DEPARTMENT OF TRANSPORTATION**

**LOCATION MAP (EXIT 46B & 46A)  
I-74 / US 34 INTERCHANGE**



SCALE: SHEET OF SHEETS STA. TO STA.

| F.A. RTE. | SECTION                    | COUNTY   | TOTAL SHEETS       | SHEET NO. |
|-----------|----------------------------|----------|--------------------|-----------|
| VAR.      | D4 WEED SPRAYING 2019 (OR) | VARIOUS  | 21                 | 12        |
|           |                            |          | CONTRACT NO. 68E61 |           |
|           |                            | ILLINOIS | FED. AID PROJECT   |           |





**LEGEND**

|   |   |
|---|---|
|  | SS = Spot Spraying                                      |
|   | BR = Brush  |
|  | BS = Blanket Spraying                                   |
|   | SS* = May Require Hand Spray/Back Pack                  |
|   | TSL = Teasel  |
|   | THSL = Thistle  |
|   | CV = Crown Vetch  |
|   | FL = Fence Line   |
|   | (++) = Engineer must be present during spray operations |
|   | NS = No Spray   |
|   | Wet = Area is Seasonally Wet                            |
|   | PR = Prairie - Consult with R.E.                        |
|   | Edges = Spray mowed edge only & consult with R.E.       |
|   | Heavy = Heavy Infestation                               |
|   | SRRA = Spoon River Rest Area                            |
|   | STP = Steep Hillside                                    |
|   | (*) = For Information Only                              |

NOT TO SCALE

MODEL: Default  
 FILE: \\nas01.cas.usg.edu\B08A8E8D10\ITC\Illinois.gov\PRWDOT\Documents\DOT\_Offices\Director\_a\Projects\04\_68E61\04ADDRA\CAD\Drawings\68E61-CADD.dwg

|                              |            |           |
|------------------------------|------------|-----------|
| USER NAME = eversct          | DESIGNED - | REVISED - |
|                              | DRAWN -    | REVISED - |
| PLOT SCALE = 100,0000' / in. | CHECKED -  | REVISED - |
| PLOT DATE = 8/31/2018        | DATE -     | REVISED - |

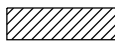





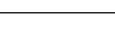
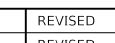
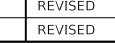

**STATE OF ILLINOIS  
DEPARTMENT OF TRANSPORTATION**

**LOCATION MAP (HENDERSON STREET EXIT)  
US 34 /US 150 INTERCHANGE**

SCALE: SHEET OF SHEETS STA. TO STA.

| F.A. RTE. | SECTION                    | COUNTY   | TOTAL SHEETS       | SHEET NO. |
|-----------|----------------------------|----------|--------------------|-----------|
| VAR.      | D4 WEED SPRAYING 2019 (OR) | VARIOUS  | 21                 | 13        |
|           |                            |          | CONTRACT NO. 68E61 |           |
|           |                            | ILLINOIS | FED. AID PROJECT   |           |

| ROUTE            | TEAM SECTION | DIRECTION          | LOCATION  | COUNTY              | APPROX. MILES | APPROX. ACRES | APPROX. OUNCES | NOTES                     |  |
|------------------|--------------|--------------------|---|---------------------|---------------|---------------|----------------|---------------------------|--|
|                  |              |                    |   |                     |               | OFF-RD.       | OFF-RD.        |                           |  |
| BUS 24           | 441          | EB/WB              | Washington Bypass to 5 Mi. W of IL 117  | TAZEWELL / WOODFORD | 15            | 10            | 60             | SS, PR ++ FL              |  |
| US 24            | 441          | Westbound          | RR Br. To Tazewell Co. Line   | TAZEWELL            |               | 3             | 18             | SS, PR ++ FL              |  |
| US 24            | 441          | Westbound          | Tazewell Co. Line to Dee-Mack Rd.   | TAZEWELL            |               | 5             | 30             | SS, PR                    |  |
| US 24            | 441          | Westbound          | E/W Main St.  | TAZEWELL            |               | 5             | 30             | SS, PR                    |  |
| US 24            | 441          | Westbound          | E of Nofsinger Rd.  | TAZEWELL            |               | 3             | 18             | SS, PR                    |  |
| US 24            | 441          | Westbound          | 0.5 Mi. W of Cummings   | TAZEWELL            |               | 2             | 12             | SS, PR                    |  |
| US 24            | 441          | Westbound          | Cummings to Spring Creek  | TAZEWELL            |               | 2             | 12             | SS, PR                    |  |
| US 24            | 441          | Westbound          | Bus. Rtes. 8/24 (and overpass)  | TAZEWELL            |               | 30            | 180            | SS/BS (Heavy)             |  |
| BUS 24/IL 8      | 441          | Southbound         | McClugage Rd.   | TAZEWELL            |               | 20            | 120            | BS                        |  |
| BUS 24/IL 8      | 441          | EB/WB              | Washington Rd. (Ernest St. to Cummings Ln.)                                   | TAZEWELL            |               | 40            | 240            | BS                        |  |
| US 24            | 441          | Westbound          | Rt. 8 to Grange Rd.   | TAZEWELL            |               | 10            | 70             | SS, CANADA THSL           |  |
| US 24            | 441          | Westbound          | US 150 to I.C.C.  | TAZEWELL            |               | 40            | 240            | SS, PR                    |  |
| US 24            | 441          | Eastbound          | College Dr. to Rt. 8  | TAZEWELL            |               | 10            | 12             | SS, PR                    |  |
| US 24            | 441          | Eastbound          | Rt. 8 to Spring Creek Rd.   | TAZEWELL            |               | 5             | 30             | SS, PR                    |  |
| US 24            | 441          | Eastbound          | Spring Creek Rd. to Cummings  | TAZEWELL            |               | 10            | 60             | SS, PR                    |  |
| US 24            | 441          | Eastbound          | Cummings to Nofsinger   | TAZEWELL            |               | 5             | 30             | SS, PR, FL                |  |
| US 24            | 441          | Eastbound          | Nofsinger to Main St.   | TAZEWELL            |               | 10            | 60             | SS, PR ++                 |  |
| US 24            | 441          | Eastbound          | Main to Dieble  | TAZEWELL            |               | 10            | 60             | SS, PR ++                 |  |
| US 24            | 441          | Eastbound          | Dieble to Dee-Mack  | TAZEWELL            |               | 10            | 60             | FL,SS, PR ++              |  |
| US 24            | 441          | Eastbound          | Woodford Co. Line to Cruger Rd.   | TAZEWELL / WOODFORD |               | 5             | 30             | SS, PR ++                 |  |
| US 24            | 441          | <b>Interchange</b> | <b>Interchange US 150 / IL 116 (SEE DETAIL PG 4)</b>                          | TAZEWELL            |               | 80            | 480            | BS, TSL, THSL, BR         |  |
| IL 116           | 441          | <b>NB/SB</b>       | JCT of US 150 & IL 116 to Tazewell Co. Line (Including JCT of IL 26 & IL 116) | TAZEWELL            |               | 58            | 348            | BS                        |  |
| I-155            | 441          | <b>Median</b>      | MM 10-22 ; 29-32  | TAZEWELL            | 22            | 150           | 900            | SS (NS MM 22-29 Median)   |  |
| I-155            | 441          | Southbound         | MM 31.5-31.9  | TAZEWELL            | 0.4           | 3             | 18             | Heavy TSL before overpass |  |
| I-155            | 441          | Southbound         | <b>MM 31 Exit (Birchwood St)(SW infield/ramp)</b>                             | TAZEWELL            |               | 20            | 120            | SS, PR, Heavy TSL         |  |
| I-155            | 441          | Southbound         | MM 30.9   | TAZEWELL            |               | 1             | 6              | SS                        |  |
| I-155            | 441          | Southbound         | MM 30.1   | TAZEWELL            |               | 1             | 6              | SS                        |  |
| I-155            | 441          | Southbound         | <b>Exit 30 Queenwood (NW infield &amp; ramp)</b>                              | TAZEWELL            |               | 2             | 12             | SS                        |  |
| I-155            | 441          | Southbound         | <b>MM 29 Main St Entrance ramp SB infield</b>                                 | TAZEWELL            |               | 2             | 12             | SS                        |  |
| I-155            | 441          | Southbound         | MM 28.5   | TAZEWELL            |               | 1             | 6              | SS                        |  |
| I-155            | 441          | Southbound         | MM 28.0   | TAZEWELL            |               | 1             | 6              | SS                        |  |
| I-155            | 441          | Southbound         | <b>MM 28 Exit (Broadway Rd. NW &amp; SW Infields)</b>                         | TAZEWELL            |               | 5             | 30             | SS                        |  |
| I-155            | 441          | Southbound         | MM 27.5-26.1  | TAZEWELL            | 1.4           | 1             | 6              | SS                        |  |
| I-155            | 441          | Southbound         | <b>MM 25 Exit (NW &amp; SW Infield &amp; Ramps to IL 9)</b>                   | TAZEWELL            |               | 5             | 30             | SS                        |  |
| <b>SUB-TOTAL</b> |              |                    |   |                     |               |               | <b>3352</b>    |                           |  |

| LEGEND   |   |
|--|---|
|  | SS = Spot Spraying                                      |
|  | BR = Brush  |
|  | BS = Blanket Spraying                                   |
|  | SS* = May Require Hand Spray/Back Pack                  |
|  | TSL = Teasel  |
|  | THSL = Thistle  |
|  | CV = Crown Vetch  |
|  | FL = Fence Line   |
|  | (++) = Engineer must be present during spray operations |
|  | NS = No Spray   |
|  | Wet = Area is Seasonally Wet                            |
|  | PR = Prairie - Consult with R.E.                        |
|  | Edges = Spray mowed edge only & consult with R.E.       |
|  | Heavy = Heavy Infestation                               |
|  | SRRA = Spoon River Rest Area                            |
|  | STP = Steep Hillside                                    |
|  | (*) = For Information Only                              |

MODEL: Default  
 FILE: \\s:\p\68E61\B&E\DOT\Documents\DOT\_Offices\DOT\_68E61\CADD\DOT\_68E61\CADD\DOT\_68E61\_CADD.dwg

|                              |            |           |
|------------------------------|------------|-----------|
| USER NAME = eversct          | DESIGNED - | REVISED - |
|                              | DRAWN -    | REVISED - |
| PLOT SCALE = 100,0000' / in. | CHECKED -  | REVISED - |
| PLOT DATE = 8/31/2018        | DATE -     | REVISED - |

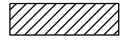
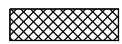
**STATE OF ILLINOIS  
DEPARTMENT OF TRANSPORTATION**

**SCHEDULE OF QUANTITIES**

SCALE: SHEET OF SHEETS STA. TO STA.

| F.A. RTE.          | SECTION                    | COUNTY           | TOTAL SHEETS | SHEET NO. |
|--------------------|----------------------------|------------------|--------------|-----------|
| VAR.               | D4 WEED SPRAYING 2019 (OR) | VARIOUS          | 21           | 14        |
| CONTRACT NO. 68E61 |                            |                  |              |           |
| ILLINOIS           |                            | FED. AID PROJECT |              |           |

| ROUTE            | TEAM SECTION | DIRECTION  |  | COUNTY   | APPROX. MILES | APPROX. ACRES | APPROX. OUNCES | NOTES             |  |
|------------------|--------------|------------|--|----------|---------------|---------------|----------------|-------------------|--|
|                  |              |            |  |          |               | OFF-RD.       | OFF-RD.        |                   |  |
| I-155            | 441          | Southbound | MM 25.1  | TAZEWELL |               | 0.5           | 3              | SS                |  |
| I-155            | 441          | Southbound | MM 24.5  | TAZEWELL |               | 0.5           | 3              | SS                |  |
| I-155            | 441          | Southbound | MM 24.5-22.5   | TAZEWELL | 2             | 2             | 12             | SS, PR            |  |
| I-155            | 441          | Southbound | MM 22.1 (curve)  | TAZEWELL |               | 0.5           | 3              | SS                |  |
| I-155            | 441          | Southbound | <b>MM 22 Exit (Townline Rd NW/SW Infields &amp; Ramps)</b> | TAZEWELL |               | 15            | 90             | SS, PR, Heavy TSL |  |
| I-155            | 441          | Southbound | MM 20-19   | TAZEWELL | 1             | 3             | 18             | STP, SS           |  |
| I-155            | 441          | Southbound | MM 19.5 (Mackinaw River)                                   | TAZEWELL |               | 10            | 60             | BR, SS            |  |
| I-155            | 441          | Southbound | <b>Hopedale Exit 19 (NW/SW Infields &amp; Ramps)</b>       | TAZEWELL |               | 15            | 90             | SS, PR            |  |
| I-155            | 441          | Southbound | MM 18.5  | TAZEWELL |               | 0.5           | 3              | SS                |  |
| I-155            | 441          | Southbound | MM 17  | TAZEWELL |               | 1             | 6              | STP, PR, SS       |  |
| I-155            | 441          | Southbound | MM 17.2  | TAZEWELL |               | 2             | 12             | SS                |  |
| I-155            | 441          | Southbound | MM 16-16.5   | TAZEWELL | 0.5           | 3             | 18             | BS                |  |
| I-155            | 441          | Southbound | <b>MM 15 Exit (Delavan NW/SW Infields &amp; Ramps)</b>     | TAZEWELL |               | 10            | 60             | BS                |  |
| I-155            | 441          | Southbound | MM 15-15.5   | TAZEWELL | 0.5           | 5             | 30             | SS                |  |
| I-155            | 441          | Southbound | MM 14.9-14.5   | TAZEWELL | 0.4           | 5             | 30             | SS                |  |
| I-155            | 441          | Southbound | MM 13-13.5   | TAZEWELL | 0.5           | 2.5           | 15             | SS                |  |
| I-155            | 441          | Southbound | MM 12-12.6   | TAZEWELL | 0.6           | 2.5           | 15             | SS, FL            |  |
| I-155            | 441          | Southbound | MM 11-11.5   | TAZEWELL | 0.5           | 1             | 6              | SS                |  |
| I-155            | 441          | SB/NB      | <b>At Exit 10 (US HWY 136 ALL 4 Infields)</b>              | TAZEWELL |               | 9             | 54             | BS                |  |
| I-155            | 441          | Northbound | MM 10.1 (Ramp sides)                                       | TAZEWELL |               | 3             | 18             | SS, FL            |  |
| I-155            | 441          | Northbound | MM 10.2-10.7   | TAZEWELL | 0.5           | 5             | 30             | SS                |  |
| I-155            | 441          | Northbound | MM 11.5-11.8   | TAZEWELL | 0.3           | 3             | 18             | SS                |  |
| I-155            | 441          | Northbound | MM 12-14.9   | TAZEWELL | 2.9           | 10            | 60             | SS                |  |
| I-155            | 441          | Northbound | <b>Exit 15 (Delavan SE/NE Infields &amp; Ramps)</b>        | TAZEWELL |               | 5             | 30             | BS                |  |
| I-155            | 441          | Northbound | MM 15-16   | TAZEWELL | 1             | 10            | 60             | SS                |  |
| I-155            | 441          | Northbound | MM 17-18   | TAZEWELL | 1             | 5             | 30             | SS                |  |
| I-155            | 441          | Northbound | MM 18-19 (Edges and Fence)                                 | TAZEWELL | 1             | 10            | 60             | SS, FL            |  |
| I-155            | 441          | Northbound | <b>Hopedale Exit 19 (SE/NE Infields &amp; Ramps)</b>       | TAZEWELL |               | 20            | 120            | PR, SS            |  |
| I-155            | 441          | Northbound | MM 19.1-20 (Fenceline)                                     | TAZEWELL | 1             | 15            | 90             | SS                |  |
| I-155            | 441          | Northbound | MM 20-22   | TAZEWELL | 2             | 1             | 6              | SS, FL            |  |
| I-155            | 441          | Northbound | <b>Exit 22 Townline Rd (SE/NE Infields &amp; Ramps)</b>    | TAZEWELL |               | 15            | 90             | Heavy TSL         |  |
| I-155            | 441          | Northbound | <b>MM 22-25</b>  | TAZEWELL | 3             |               |                | <b>NS</b>         |  |
| I-155            | 441          | Northbound | <b>Exit 25 (SE/NE Infields &amp; Ramps to IL 9)</b>        | TAZEWELL |               | 1             | 6              | SS                |  |
| I-155            | 441          | Northbound | MM 26-27.9   | TAZEWELL | 1.9           | 1             | 6              | SS                |  |
| <b>SUB-TOTAL</b> |              |            |  |          |               |               |                | <b>1152</b>       |  |

| LEGEND  |   |
|---|---|
|  | SS = Spot Spraying                                      |
|   | BR = Brush  |
|  | BS = Blanket Spraying                                   |
|   | SS* = May Require Hand Spray/Back Pack                  |
|   | TSL = Teasel  |
|   | THSL = Thistle  |
|   | CV = Crown Vetch  |
|   | FL = Fence Line   |
|   | (++) = Engineer must be present during spray operations |
|   | NS = No Spray   |
|   | Wet = Area is Seasonally Wet                            |
|   | PR = Prairie - Consult with R.E.                        |
|   | Edges = Spray mowed edge only & consult with R.E.       |
|   | Heavy = Heavy Infestation                               |
|   | SRRA = Spoon River Rest Area                            |
|   | STP = Steep Hillside                                    |
|   | (*) = For Information Only                              |

MODEL: Default  
 FILE: \\mlls01\B&E\ID\NTEC\Illinois\gov\PIWDOT\Documents\DOT\_Offices\DI\erict\_a\Projects\04\_68E61\CADD\04\_68E61\CADD\04\_68E61\_CADD.dgn

|                              |            |           |
|------------------------------|------------|-----------|
| USER NAME = eversct          | DESIGNED - | REVISED - |
|                              | DRAWN -    | REVISED - |
| PLOT SCALE = 100,0000' / in. | CHECKED -  | REVISED - |
| PLOT DATE = 8/31/2018        | DATE -     | REVISED - |

**STATE OF ILLINOIS  
DEPARTMENT OF TRANSPORTATION**

| SCHEDULE OF QUANTITIES |       |    |        |
|------------------------|-------|----|--------|
| SCALE:                 | SHEET | OF | SHEETS |
|                        |       |    |        |
|                        |       |    |        |

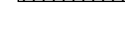
| F.A. RTE. | SECTION                    | COUNTY   | TOTAL SHEETS       | SHEET NO. |
|-----------|----------------------------|----------|--------------------|-----------|
| VAR.      | D4 WEED SPRAYING 2019 (OR) | VARIOUS  | 21                 | 15        |
|           |                            |          | CONTRACT NO. 68E61 |           |
|           |                            | ILLINOIS | FED. AID PROJECT   |           |

| ROUTE            | TEAM SECTION | DIRECTION  |   | COUNTY              | APPROX. MILES | APPROX. ACRES | APPROX. OUNCES | NOTES         |  |
|------------------|--------------|------------|---|---------------------|---------------|---------------|----------------|---------------|--|
|                  |              |            |   |                     |               | OFF-RD.       | OFF-RD.        |               |  |
| I-155            | 441          | Northbound | <b>Exit 28 Broadway Rd (SE/NE Infields &amp; Ramps)</b>                     | TAZEWELL            |               | 10            | 60             | SS            |  |
| I-155            | 441          | Northbound | <b>Exit 29 (Main St. Exit Infield &amp; Ramp)</b>                           | TAZEWELL            |               | 20            | 120            | BS, STP       |  |
| I-155            | 441          | Northbound | <b>MM 30 Entrance Ramp (Queenwood Infield &amp; Ramp)</b>                   | TAZEWELL            |               | 2             | 12             | SS            |  |
| I-155            | 441          | Northbound | MM 30.1-30.9  | TAZEWELL            | 1             | 20            | 120            | BS EXIT       |  |
| I-155            | 441          | Northbound | <b>BIRCH WOOD EXIT 31 (Infields &amp; Ramp)</b>                             | TAZEWELL            | 1             | 40            | 240            | BS, SS        |  |
| I-74             | 441          | Eastbound  | MM 94 (Underpass) East Peoria (Head down river on ramp to get to Camp St.)  | TAZEWELL            |               | 2             | 12             | BS            |  |
| I-74             | 441          | Eastbound  | <b>MM 94/At Exit 94 (Ramp to Washington St)</b>                             | TAZEWELL            |               | 10            | 60             | BS            |  |
| I-74             | 441          | Eastbound  | <b>MM Exit 94/Entrance ramp to I-74 (Camp St. infield &amp; EB infield)</b> | TAZEWELL            |               | 3             | 18             | BS            |  |
| I-74             | 441          | Eastbound  | MM 95-96  | TAZEWELL            |               | 20            | 120            | BS            |  |
| I-74             | 441          | Eastbound  | <b>IL 8 Exit 95/96 (Ramp)</b>   | TAZEWELL            |               | 5             | 30             | BS            |  |
| I-74             | 441          | Eastbound  | <b>MM 96 Exit 96 (Infield)</b>  | TAZEWELL            |               | 8             | 48             | BS, Exit      |  |
| I-74             | 441          | Eastbound  | MM 96-96.5  | TAZEWELL            | 0.5           | 1             | 6              | BS, Edges, BR |  |
| I-74             | 441          | Eastbound  | MM 98-97  | TAZEWELL            | 1             | 5             | 30             | SS            |  |
| I-74             | 441          | Eastbound  | <b>MM 98 Pinecrest (Exit Ramps)</b>   | TAZEWELL            |               | 10            | 60             | BS, FL        |  |
| I-74             | 441          | Eastbound  | At I-74 MM 100  | TAZEWELL            |               | 110           | 660            | BS            |  |
| I-74             | 441          | Infields   | <b>MM 99-100 (474 interchange)</b>  | TAZEWELL            |               | 100           | 600            | BS, Wet       |  |
| I-74             | 441          | Eastbound  | MM 100-101 (NS N of Ramps)  | TAZEWELL            |               | 40            | 240            | BS, Wet       |  |
| I-74             | 441          | Eastbound  | MM 101 (I-155)  | TAZEWELL            |               | 1             | 6              | BS, Edges     |  |
| I-74             | 441          | Eastbound  | MM 102 Morton   | TAZEWELL            |               | 10            | 60             | BS, Ramps     |  |
| I-74             | 441          | Eastbound  | MM 103-104 (Exit Infield & Ramps)   | TAZEWELL            |               | 1             | 6              | SS            |  |
| I-74             | 441          |            | MM 104-106 (Median)   | TAZEWELL            |               | 1             | 6              | SS            |  |
| I-74             | 441          | Eastbound  | MM 95-108   | TAZEWELL / WOODFORD | 25            | 8             | 48             | SS            |  |
| I-74             | 441          | Westbound  | MM 100-97 WB  | TAZEWELL            | 3             | 2             | 12             | BS            |  |
| I-74             | 441          | Westbound  | <b>MM 120 (Ramps/Infield)</b>   | MCLEAN              |               | 20 *          | 120            | BS, STP, *    |  |
| I-474            | 441          | Median     | MM 15- MM 2   | TAZEWELL            | 13            | 100           | 600            | BS            |  |
| I-474            | 441          | Infields   | <b>MM Exit 15</b>   | TAZEWELL            |               | 8             | 48             | BS, Wet, STP  |  |
| I-474            | 441          | Westbound  | MM 13-9   | TAZEWELL            | 4             | 3             | 18             | BS            |  |
| I-474            | 441          | Westbound  | MM 12 (Overpass)  | TAZEWELL            |               | 4             | 24             | SS            |  |
| I-474            | 441          | Westbound  | MM 9.9-14.5   | TAZEWELL            | 4.6           | 5             | 30             | BS            |  |
| I-474            | 441          | Westbound  | MM 9.5  | TAZEWELL            |               | 2             | 12             | SS, STP       |  |
| I-474            | 441          | Westbound  | <b>Exit 9 (To IL 29, Ramps, edges of infield)</b>                           | TAZEWELL            |               | 5             | 30             | BS, STP, Wet  |  |
| <b>SUB-TOTAL</b> |              |            |   |                     |               |               | <b>3456</b>    |               |  |

**LEGEND**



SS = Spot Spraying



BR = Brush



BS = Blanket Spraying

SS\* = May Require Hand Spray/Back Pack

TSL = Teasel

THSL = Thistle

CV = Crown Vetch

FL = Fence Line

(++) = Engineer must be present during spray operations

NS = No Spray

Wet = Area is Seasonally Wet

PR = Prairie - Consult with R.E.

Edges = Spray mowed edge only & consult with R.E.

Heavy = Heavy Infestation

SRRA = Spoon River Rest Area

STP = Steep Hillside

(\*) = For Information Only

MODEL: Default  
FILE: \\mspc-pw\illinois\gov\pww\DOT\Documents\DOT\_Offices\Illinois\68E61\CADD\Drawings\68E61-CADD.dgn

|                              |            |           |
|------------------------------|------------|-----------|
| USER NAME = eversct          | DESIGNED - | REVISED - |
|                              | DRAWN -    | REVISED - |
| PLOT SCALE = 100,0000' / in. | CHECKED -  | REVISED - |
| PLOT DATE = 8/31/2018        | DATE -     | REVISED - |



**STATE OF ILLINOIS  
DEPARTMENT OF TRANSPORTATION**

**SCHEDULE OF QUANTITIES**

SCALE: SHEET OF SHEETS STA. TO STA.

| F.A. RTE.                 | SECTION                    | COUNTY  | TOTAL SHEETS | SHEET NO. |
|---------------------------|----------------------------|---------|--------------|-----------|
| VAR.                      | D4 WEED SPRAYING 2019 (OR) | VARIOUS | 21           | 16        |
| CONTRACT NO. 68E61        |                            |         |              |           |
| ILLINOIS FED. AID PROJECT |                            |         |              |           |

| ROUTE            | TEAM SECTION | DIRECTION          |  | COUNTY | APPROX. MILES | APPROX. ACRES | APPROX. OUNCES | NOTES                       |  |
|------------------|--------------|--------------------|--|--------|---------------|---------------|----------------|-----------------------------|--|
|                  |              |                    |  |        |               | OFF-RD.       | OFF-RD.        |                             |  |
| I-474            | 432          | Median             | IL River to I-74 (MM 8 to MM 1)                                  | PEORIA | 7             | 60            | 360            | SS                          |  |
| I-474            | 432          | Westbound          | MM 7-8.25  | PEORIA | 1.25          | 10            | 60             | BS                          |  |
| I-474            | 432          | Westbound          | MM 7-6   | PEORIA | 1             | 10            | 60             | BS                          |  |
| I-474            | 432          | Westbound          | <b>Exit 6B &amp; 6A (Exit Ramp, Entrance Ramp &amp; Infield)</b> | PEORIA |               | 10            | 60             | Wet, SS, PR                 |  |
| I-474            | 432          | Westbound          | <b>Exit 5 (WB Ramps)</b>   | PEORIA |               | 24            | 144            | BS                          |  |
| I-474            | 432          | Westbound          | MM 3.9-4   | PEORIA | 0.1           | 1             | 6              | SS                          |  |
| I-474            | 432          | Westbound          | <b>Exit 3A (Infields, Ramps)</b>                                 | PEORIA |               | 10            | 60             | BS                          |  |
| I-474            | 432          | Westbound          | MM 1.5-3   | PEORIA | 1.5           | 10            | 60             | BS                          |  |
| I-474            | 432          | <b>Interchange</b> | <b>I-74 Infields, Ramps (SEE DETAIL 6)</b>                       | PEORIA |               | 10            | 60             | STP                         |  |
| I-474            | 432          | Eastbound          | MM 0-8.25  | PEORIA | 8.25          | 5             | 30             | SS                          |  |
| I-474            | 432          | Eastbound          | <b>Exit 3A (Infields &amp; Ramps)</b>                            | PEORIA |               | 10            | 60             | TSL                         |  |
| I-474            | 432          | Eastbound          | <b>Exit 5 (EB Ramps &amp; Infield)</b>                           | PEORIA |               | 24            | 144            | TSL                         |  |
| I-474            | 432          | Eastbound          | Exit 6 (Exit Ramp & Infield, Entrance Ramp & Infield)            | PEORIA |               | 10            | 60             | SS, PR                      |  |
| IL 6             | 432          | <b>Interchange</b> | <b>I-74 (SEE DETAIL PG 6)</b>                                    | PEORIA |               | 60            | 360            | STP, SS                     |  |
| IL 6             | 432          | Median             | MM 0-5   | PEORIA | 5             | 10            | 60             | SS                          |  |
| IL 6             | 432          | Northbound         | MM 2-5   | PEORIA | 3             | 9             | 54             | BS, Wet Ditch               |  |
| IL 6             | 432          | <b>Interchange</b> | <b>Exit 2 (US 150) (SEE DETAIL 6)</b>                            | PEORIA |               | 5             | 30             | Edges                       |  |
| IL 6             | 432          | Southbound         | <b>Exit 5 To ALLEN RD (Infields &amp; Ramps)</b>                 | PEORIA |               | 25            | 150            | Edges, PR                   |  |
| IL 6             | 432          | <b>Interchange</b> | <b>Exit 6 to IL 40 (SEE DETAIL 7)</b>                            | PEORIA |               | 10            | 60             | Edges ++, Spot spray middle |  |
| IL 6             | 432          | Northbound         | MM 7.5   | PEORIA |               | 5             | 30             | STP, heavy TSL              |  |
| IL 6             | 432          | Northbound         | MM 8 to Ramp/Infield at Exit 9                                   | PEORIA | 1             | 60            | 360            | Wet Areas, TSL              |  |
| IL 6             | 432          | Intersection       | At IL 29   | PEORIA |               | 20            | 120            | BS, Heavy TSL               |  |
| IL 6             | 432          | Southbound         | MM 9   | PEORIA |               | 60            | 360            | SS                          |  |
| IL 6             | 432          | Southbound         | MM 7-8   | PEORIA | 1             | 4             | 24             | STP, SS*                    |  |
| IL 6             | 432          | Southbound         | MM 5-6   | PEORIA | 1             | 10            | 60             | SS                          |  |
| IL 6             | 432          | Southbound         | MM 2-4   | PEORIA | 2             | 10            | 60             | SS, Wet Ditch               |  |
| IL 6             | 432          | Southbound         | MM 2.2   | PEORIA |               | 1             | 6              | SS                          |  |
| IL 6             | 432          | Southbound         | MM 1.5   | PEORIA |               | 1             | 6              | SS                          |  |
| IL 6             | 432          | Southbound         | MM 0.9   | PEORIA |               | 1             | 6              | SS                          |  |
| IL 40            | 432          | NB/SB              | IL 6 - US 150  | PEORIA |               | 20            | 120            | SS (very spotty) Edges      |  |
| <b>SUB-TOTAL</b> |              |                    |  |        |               |               | <b>3030</b>    |                             |  |

| LEGEND   |   |
|--|---|
|  | SS = Spot Spraying                                      |
|  | BS = Blanket Spraying                                   |
|  | SS* = May Require Hand Spray/Back Pack                  |
|  | TSL = Teasel  |
|  | THSL = Thistle  |
|  | CV = Crown Vetch  |
|  | FL = Fence Line   |
|  | (++) = Engineer must be present during spray operations |
|  | NS = No Spray   |
|  | Wet = Area is Seasonally Wet                            |
|  | PR = Prairie - Consult with R.E.                        |
|  | Edges = Spray mowed edge only & consult with R.E.       |
|  | Heavy = Heavy Infestation                               |
|  | SRRA = Spoon River Rest Area                            |
|  | STP = Steep Hillside                                    |
|  | (*) = For Information Only                              |

MODEL: Default  
 FILE: \\s:\p\68E61\B&E\BID\NTEC\Illinois.gov\FWIDOT\Documents\BID\Office\BID\BID\68E61\CADD\B&E\CADrawings\B&E\68E61-CADD.dwg

|                              |            |           |
|------------------------------|------------|-----------|
| USER NAME = eversct          | DESIGNED - | REVISED - |
|                              | DRAWN -    | REVISED - |
| PLOT SCALE = 100,0000' / in. | CHECKED -  | REVISED - |
| PLOT DATE = 8/31/2018        | DATE -     | REVISED - |

**STATE OF ILLINOIS  
DEPARTMENT OF TRANSPORTATION**

**SCHEDULE OF QUANTITIES**

SCALE: SHEET OF SHEETS STA. TO STA.

| F.A. RTE.          | SECTION                    | COUNTY           | TOTAL SHEETS | SHEET NO. |
|--------------------|----------------------------|------------------|--------------|-----------|
| VAR.               | D4 WEED SPRAYING 2019 (OR) | VARIOUS          | 21           | 17        |
| CONTRACT NO. 68E61 |                            |                  |              |           |
| ILLINOIS           |                            | FED. AID PROJECT |              |           |

| ROUTE            | TEAM SECTION | DIRECTION          |  | COUNTY            | APPROX. MILES | APPROX. ACRES | APPROX. OUNCES | NOTES                          |
|------------------|--------------|--------------------|--|-------------------|---------------|---------------|----------------|--------------------------------|
|                  |              |                    |  |                   |               | OFF-RD.       | OFF-RD.        |                                |
| IL 29            | 432          | NB/SB              | Peoria to Chillicothe                                      | PEORIA            |               | 10            | 60             | BS                             |
| IL 29            | 432          | NB/SB              | Chillicothe to Henry                                       | PEORIA / MARSHALL |               | 40            | 240            | BS                             |
| IL 29            | 432          | NB/SB              | IL 6 to US 150   | PEORIA            |               | 10            | 60             | BS                             |
| IL 29            | 432          | Intersection       | North of IL 6 - IL 29                                      | PEORIA            |               | 5             | 30             | BS                             |
| IL 91            | 432          | NB/SB              | Grange Hall Rd. to Dunlap                                  | PEORIA            | 6             | 20            | 120            | BS                             |
| IL 8             | 432          | EB/WB              | Farmington Rd. - IL 78                                     | PEORIA            | 34            | 100           | 600            | BS, STP                        |
| IL 116           | 432          | EB/WB              | I-474 - Hanna City   | PEORIA            | 12            | 70            | 420            | BS                             |
| US 150           | 432          | EB/WB              | Allen Rd.-Willow Knolls Dr.                                | PEORIA            | 6             | 20            | 120            | BS                             |
| US 150           | 432          | EB/WB              | IL 78 - Kickapoo Creek Rd.                                 | PEORIA            |               | 60            | 360            | BS                             |
| US 24            | 432          | NB/MED/SB          | 2 Mi. N. of IL 9 to Banner                                 | PEORIA            | 17            | 60            | 360            | BS, BR                         |
| IL 9             | 432          | EB/WB              | US 24-IL River (near Bridges)                              | PEORIA            | 5             | 20            | 120            | BS, Edges                      |
| I-74             | 432          | Westbound          | <b>MM 91-93 (Downtown Peoria Plantings)</b>                | PEORIA            |               |               |                | <b>NS</b>                      |
| I-74             | 432          | Westbound          | <b>Exit 92 / MM 92.5 (Ramp &amp; Infield)</b>              | PEORIA            | 0.5           | 5             | 30             | BS, BR, STP                    |
| I-74             | 432          | Eastbound          | MM 92 EB****   | PEORIA            |               | 1             | 6              | SS, NS Bushes                  |
| I-74             | 432          | Westbound          | Exit 91 (University)                                       | PEORIA            |               | 20            | 120            | BS, CV, THSL, STP              |
| I-74             | 432          | Westbound          | MM 90-92   | PEORIA            |               | 10            | 60             | BS                             |
| I-74             | 432          | <b>Interchange</b> | <b>Exit 90 (Gale Ave.)(paved gutters)(SEE DETAIL PG 4)</b> | PEORIA            |               | 10            | 60             | SS, BR                         |
| I-74             | 432          | Westbound          | MM 90-89 *****   | PEORIA            |               | 1             | 6              | SS, Heavy                      |
| I-74             | 432          | Westbound          | <b>Exit 89 &amp; 88</b>                                    | PEORIA            |               | 10            | 60             | BS, STP                        |
| I-74             | 432          | Eastbound          | MM 89-91   | PEORIA            |               | 10            | 60             | BS                             |
| I-74             | 432          | <b>Interchange</b> | <b>Exit 87 (Ramps) (SEE DETAIL PG 6)</b>                   | PEORIA            |               | 20            | 120            | SS, PR, STP                    |
| I-74             | 432          | Median             | MM 87-88   | PEORIA            |               | 1             | 6              | BS                             |
| I-74             | 432          | EB/WB              | MM 85  | PEORIA            |               |               |                | Perennial bed, PR <b>NS ++</b> |
| I-74             | 432          | Westbound          | MM 88-84   | PEORIA            | 4             | 12            | 72             | BS, Edges                      |
| I-74             | 432          | Westbound          | Spray brush on Gilles Rd. & Heinz Ln overpasses            | PEORIA            |               | 10            | 60             | BS                             |
| I-74             | 432          | Median             | MM 87-86   | PEORIA            |               | 10            | 60             | BS, Wet, Median                |
| I-74             | 432          | Eastbound          | MM 82-80   | PEORIA            | 2             | 5             | 30             | BS                             |
| I-74             | 432          | <b>Interchange</b> | <b>Exit 82 (Kickapoo/Edwards) (SEE DETAIL PG 8)</b>        | PEORIA            |               | 8             | 48             | SS, PR, Edges ++               |
| I-74             | 432          | Median             | MM 76-82   | PEORIA            | 6             | 20            | 120            | BS, Median Edges               |
| I-74             | 432          | Westbound          | MM 75-82   | PEORIA            | 7             | 10            | 60             | BS, BR, FL                     |
| I-74             | 432          | Westbound          | <b>Exit 75</b>   | PEORIA            |               | 10            | 60             | SS                             |
| I-74             | 432          | Eastbound          | MM 71-75   | PEORIA            | 4             | 10            | 60             | BS, Edges                      |
| I-74             | 432          | Westbound          | MM 71-68 (Median Shoulder)                                 | PEORIA            | 3             | 20            | 120            | BS                             |
| I-74             | 432          | EB/WB              | MM 74  | PEORIA            |               | 3             | 18             | BS, Hillside (by sign)         |
| I-74             | 432          | Westbound          | <b>EB Exit 71 (Ramps)</b>                                  | PEORIA            |               | 8             | 48             | SS Ramps/Edges, PR Infields ++ |
| <b>SUB-TOTAL</b> |              |                    |  |                   |               |               | <b>3774</b>    |                                |

**Symbol Notes**

\*\*\*\* No spray above retaining walls shrubs on sound walls. **No spray mm 92.1-93 EB & WB**

\*\*\*\*\* Large amount of TSL and brush in NE Quadrant. Will require hand spraying.

**LEGEND**



SS = Spot Spraying



BR = Brush



BS = Blanket Spraying

SS\* = May Require Hand Spray/Back Pack

TSL = Teasel

THSL = Thistle

CV = Crown Vetch

FL = Fence Line

(++) = Engineer must be present during spray operations

NS = No Spray

Wet = Area is Seasonally Wet

PR = Prairie - Consult with R.E.

Edges = Spray mowed edge only & consult with R.E.

Heavy = Heavy Infestation

SRRA = Spoon River Rest Area

STP = Steep Hillside

(\*) = For Information Only

MODEL: Default  
FILE: \\nrcs\p\1108\B&E\ID\ITEC\Illinois\gov\PIWDOT\Documents\DOT\_Offices\Director\_A\Projects\04\_68E61\CADD\04\_CADD\raw\figs\0468E61-CADD.dgn

|                              |            |           |
|------------------------------|------------|-----------|
| USER NAME = eversct          | DESIGNED - | REVISED - |
|                              | DRAWN -    | REVISED - |
| PLOT SCALE = 100,0000' / in. | CHECKED -  | REVISED - |
| PLOT DATE = 8/31/2018        | DATE -     | REVISED - |

**STATE OF ILLINOIS  
DEPARTMENT OF TRANSPORTATION**

**SCHEDULE OF QUANTITIES**

SCALE: SHEET OF SHEETS STA. TO STA.

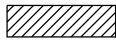


| F.A. RTE.                 | SECTION                    | COUNTY  | TOTAL SHEETS       | SHEET NO. |
|---------------------------|----------------------------|---------|--------------------|-----------|
| VAR.                      | D4 WEED SPRAYING 2019 (OR) | VARIOUS | 21                 | 18        |
| ILLINOIS FED. AID PROJECT |                            |         | CONTRACT NO. 68E61 |           |



| ROUTE            | TEAM SECTION | DIRECTION   |   | COUNTY      | APPROX. MILES | APPROX. ACRES | APPROX. OUNCES | NOTES                |
|------------------|--------------|-------------|---|-------------|---------------|---------------|----------------|----------------------|
|                  |              |             |   |             |               | OFF-RD.       | OFF-RD.        |                      |
| I-74             | 421          | Westbound   | MM 62-69  | KNOX/PEORIA | 7             | 40            | 240            | BR, FL               |
| I-74             | 421          | Westbound   | MM 62 ** (SEE DETAIL PG 9)                          | KNOX        |               | 20            | 120            | PR, TSL, STP ++      |
| I-74             | 421          | Eastbound   | Rest Area Ramp                                      | KNOX        |               | 5             | 30             | THSL                 |
| I-74             | 421          | Westbound   | MM 62   | KNOX        |               | 5             | 30             | BS                   |
| I-74             | 421          | Westbound   | MM 61-60  | KNOX        | 1             | 5             | 30             | BS                   |
| I-74             | 421          | Westbound   | No spray @ MM 58                                    | KNOX        |               |               |                | Perennial bed        |
| I-74             | 421          | Westbound   | MM 59.5-58  | KNOX        | 1.5           | 8             | 48             | BS                   |
| I-74             | 421          | Westbound   | MM 54.8   | KNOX        |               | 1             | 6              | BS                   |
| I-74             | 421          | Interchange | Exit 54 (SEE DETAIL PG 10)                          | KNOX        |               | 60            | 360            | BS, THSL, TSL        |
| I-74             | 421          | Median      | MM 51.5-50  | KNOX        | 1.5           | 5             | 30             | SS                   |
| I-74             | 421          | Westbound   | MM 51.9   | KNOX        |               | 1             | 6              | BS                   |
| I-74             | 421          | Interchange | Exit 51 Knoxville (SEE DETAIL 11)                   | KNOX        |               | 40            | 240            | TSL, PR ++           |
| I-74             | 421          | Westbound   | MM 49-45 (Median)                                   | KNOX        | 4             | 20            | 120            | SS                   |
| I-74             | 421          | Westbound   | Exit 48 A & B Ramps and Infields                    | KNOX        |               | 10            | 60             | SS                   |
| I-74             | 421          | Westbound   | MM 46-47.5  | KNOX        | 1.5           | 3             | 18             | BS                   |
| I-74             | 421          | Interchange | Exit 46 (NE/NW Infields & Ramps) (SEE DETAIL PG 12) | KNOX        |               | 40            | 240            | Exit/Ramps Heavy TSL |
| I-74             | 421          | Median      | MM 46-44  | KNOX        | 2             | 10            | 60             | BS                   |
| I-74             | 421          | Westbound   | MM 40.1   | KNOX        |               | 3             | 18             | SS                   |
| I-74             | 421          | Westbound   | MM 39.2   | KNOX        |               | 3             | 18             | SS, Hillside         |
| I-74             | 421          | EB/WB       | Henderson Creek                                     | KNOX        |               | 60            | 360            | BS                   |
| I-74             | 421          | Median      | MM 40-39  | KNOX        | 1             | 20            | 120            | BS                   |
| I-74             | 421          | Westbound   | MM 37.5-34.9  | KNOX        | 2.6           | 5             | 30             | BS, FL               |
| I-74             | 421          | EB/WB       | Pope Creek  | KNOX        |               | 40            | 240            | BS                   |
| I-74             | 421          | Median      | MM 36-34.5  | KNOX        | 2.5           | 40            | 240            | BS                   |
| I-74             | 421          | Westbound   | MM 33.5   | KNOX        |               | 1             | 6              | SS, Hillside         |
| I-74             | 421          | Interchange | Exit 32 WOODHULL (Infields & Ramps)                 | HENRY       |               | 30            | 180            | SS, PR ++            |
| I-74             | 421          | Eastbound   | MM 32.5-33.1  | KNOX        | 0.6           | 5             | 30             | SS                   |
| I-74             | 421          | Median      | MM 35-36  | KNOX        | 1             | 10            | 60             | BS                   |
| I-74             | 421          | Eastbound   | MM 36.1   | KNOX        |               | 2             | 12             | BS                   |
| <b>SUB-TOTAL</b> |              |             |   |             |               |               | <b>2952</b>    |                      |

**Symbol Notes**

\*\* No spray NW quadrant of WB SRRA good prairie

| LEGEND  |   |
|---|---|
|  | SS = Spot Spraying                                      |
|  | BR = Brush  |
|  | BS = Blanket Spraying                                   |
|   | SS* = May Require Hand Spray/Back Pack                  |
|   | TSL = Teasel  |
|   | THSL = Thistle  |
|   | CV = Crown Vetch  |
|   | FL = Fence Line   |
|   | (++) = Engineer must be present during spray operations |
|   | NS = No Spray   |
|   | Wet = Area is Seasonally Wet                            |
|   | PR = Prairie - Consult with R.E.                        |
|   | Edges = Spray mowed edge only & consult with R.E.       |
|   | Heavy = Heavy Infestation                               |
|   | SRRA = Spoon River Rest Area                            |
|   | STP = Steep Hillside                                    |
|   | (*) = For Information Only                              |

MODEL: Default  
FILE: \\nrcs\p\1108\B&E\ID\NTEC\Illinois.gov\PIWDOT\Documents\110DOT\_Offices\DI\refct\_2\Project\3104\_68E61\CADD\Drawings\C40400.dwg

|                              |            |           |
|------------------------------|------------|-----------|
| USER NAME = eversct          | DESIGNED - | REVISED - |
|                              | DRAWN -    | REVISED - |
| PLOT SCALE = 100,0000' / in. | CHECKED -  | REVISED - |
| PLOT DATE = 8/31/2018        | DATE -     | REVISED - |

**STATE OF ILLINOIS  
DEPARTMENT OF TRANSPORTATION**

**SCHEDULE OF QUANTITIES**




SCALE: SHEET OF SHEETS STA. TO STA.

|                    |                            |                  |              |           |
|--------------------|----------------------------|------------------|--------------|-----------|
| F.A. RTE.          | SECTION                    | COUNTY           | TOTAL SHEETS | SHEET NO. |
| VAR.               | D4 WEED SPRAYING 2019 (OR) | VARIOUS          | 21           | 19        |
| CONTRACT NO. 68E61 |                            |                  |              |           |
| ILLINOIS           |                            | FED. AID PROJECT |              |           |

| ROUTE            | TEAM SECTION | DIRECTION      |   | COUNTY | APPROX. MILES | APPROX. ACRES |  | APPROX. OUNCES |  | NOTES                        |
|------------------|--------------|----------------|---|--------|---------------|---------------|--|----------------|--|------------------------------|
|                  |              |                |   |        |               | OFF-RD.       |  | OFF-RD.        |  |                              |
| I-74             | 421          | Eastbound      | MM 36.8   | KNOX   |               | 1             |  | 6              |  | SS                           |
| I-74             | 421          | Eastbound      | MM 40.2   | KNOX   |               | 0.5           |  | 3              |  | SS                           |
| I-74             | 421          | Eastbound      | MM 44.5   | KNOX   |               | 0.5           |  | 3              |  | SS                           |
| I-74             | 421          | Interchange    | Exit 46 to US 34 (SE & SW Infields/ & Ramps) (SEE DETAIL PG 12) | KNOX   |               | 40            |  | 240            |  | Wet, SS, ++                  |
| US 34            | 421          | Eastbound      | Exit 46B 74 East To Oneida (Median in 4 LN)                     | KNOX   | 15            | 20            |  | 120            |  | SS, PR                       |
| US 34            | 421          | Infields/Ramps | Seminary Street Exit  | KNOX   |               | 20            |  | 120            |  | SS                           |
| US 34            | 421          | Interchange    | Henderson Street Exit (Infields & Ramps) (SEE DETAIL PG 13)     | KNOX   |               | 40            |  | 240            |  | PR, SS ++                    |
| US 34            | 421          | Infields/Ramps | West Main Street Exit   | KNOX   |               | 40            |  | 240            |  | SS, EB exit ramp heavy TSL   |
| US 34            | 421          | EB/WB          | MM 0-8  | KNOX   | 8             | 80            |  | 480            |  | BS                           |
| US 34            | 421          | Westbound      | MM 15   | WARREN |               | 1             |  | 6              |  | SS                           |
| US 150           | 421          | Northbound     | From US 34 to N. Lake Storey Rd                                 | KNOX   | 0.6           | 5             |  | 30             |  | BS                           |
| US 150           | 421          | NB/SB          | STA 354+00 to 342+00  | KNOX   |               | 5             |  | 30             |  | Heavy Rosettes               |
| US 150           | 421          | Northbound     | 500ft East & West of Knox Hwy 37 (2100)                         | KNOX   |               | 5             |  | 30             |  | Heavy Rosettes               |
| US 150           | 421          | Northbound     | Knox Rd 2350 to 500' south (west side of road)                  | KNOX   |               | 1             |  | 6              |  | BS                           |
| US 150           | 421          | Northbound     | Sta 167+00 to 170+00 (Henderson Creek) East side                | KNOX   |               | 2             |  | 12             |  | BS                           |
| US 150           | 421          | Northbound     | 600' South of Knox Rd 2900 to Knox County line                  | KNOX   | 1.2           | 20            |  | 120            |  | SS Heavy TSL near Pope Creek |
| I-74             | 421          | Eastbound      | MM 44-48  | KNOX   | 4             | 2             |  | 12             |  | BS                           |
| I-74             | 421          | Eastbound      | MM 48.5-50  | KNOX   | 1.5           | 25            |  | 150            |  | SS                           |
| I-74             | 421          | Eastbound      | Exit 48 (NW & SW Infields and Ramps)                            | KNOX   |               | 20            |  | 120            |  | SS                           |
| I-74             | 421          | Eastbound      | EB MM 62.1 (SRRA) (SEE DETAIL PG 9)                             | KNOX   |               | 40            |  | 240            |  | SRRA, SS                     |
| I-74             | 421          | Eastbound      | MM 69.8   | KNOX   |               | 0.5           |  | 3              |  | FL                           |
| I-74             | 421          | Eastbound      | MM 70.2   | PEORIA |               | 0.5           |  | 3              |  | SS                           |
| I-74             | 421          | Eastbound      | MM 70.9   | PEORIA |               | 0.5           |  | 3              |  | SS                           |
| I-74             | 421          | Infields/Ramps | Exit 71   | PEORIA |               | 10            |  | 60             |  | Edges, ++                    |
| IL 94            | 411          | NB/SB          | S. of Aledo high school; A distance of 2 miles; NB & SB         | MERCER | 2             | 20            |  | 120            |  | Heavy Rosettes               |
| <b>SUB-TOTAL</b> |              |                |   |        |               |               |  | <b>2397</b>    |  |                              |

**Symbol Notes**

\*\*No spray infields of good prairie

| LEGEND  |   |
|---|---|
|  | SS = Spot Spraying                                      |
|  | BR = Brush  |
|  | BS = Blanket Spraying                                   |
|   | SS* = May Require Hand Spray/Back Pack                  |
|   | TSL = Teasel  |
|   | THSL = Thistle  |
|   | CV = Crown Vetch  |
|   | FL = Fence Line   |
|   | (++) = Engineer must be present during spray operations |
|   | NS = No Spray   |
|   | Wet = Area is Seasonally Wet                            |
|   | PR = Prairie - Consult with R.E.                        |
|   | Edges = Spray mowed edge only & consult with R.E.       |
|   | Heavy = Heavy Infestation                               |
|   | SRRA = Spoon River Rest Area                            |
|   | STP = Steep Hillside                                    |
|   | (*) = For Information Only                              |

| QUANTITIES                | APPROX. OUNCES | GALLON*    |
|---------------------------|----------------|------------|
| <b>SUB-TOTAL SHEET 14</b> | <b>3352</b>    | <b>26</b>  |
| <b>SUB-TOTAL SHEET 15</b> | <b>1152</b>    | <b>9</b>   |
| <b>SUB-TOTAL SHEET 16</b> | <b>3456</b>    | <b>27</b>  |
| <b>SUB-TOTAL SHEET 17</b> | <b>3030</b>    | <b>24</b>  |
| <b>SUB-TOTAL SHEET 18</b> | <b>3774</b>    | <b>29</b>  |
| <b>SUB-TOTAL SHEET 19</b> | <b>2952</b>    | <b>23</b>  |
| <b>SUB-TOTAL SHEET 20</b> | <b>2397</b>    | <b>19</b>  |
| <b>TOTAL</b>              | <b>20113</b>   | <b>157</b> |

\* 128 OUNCE = 1 GALLON

MODEL: Default  
 FILE: \\nrcs\proj\686E61\CADD\Drawings\686E61\CADD\686E61-CADD.dwg  
 PROJECT: 686E61-CADD\Drawings\686E61-CADD.dwg  
 OFFICE: D:\Projects\686E61-CADD\Drawings\686E61-CADD.dwg  
 USER: everst

|                              |            |           |
|------------------------------|------------|-----------|
| USER NAME = everst           | DESIGNED - | REVISED - |
|                              | DRAWN -    | REVISED - |
| PLOT SCALE = 100,0000' / in. | CHECKED -  | REVISED - |
| PLOT DATE = 8/31/2018        | DATE -     | REVISED - |

**STATE OF ILLINOIS  
DEPARTMENT OF TRANSPORTATION**

**SCHEDULE OF QUANTITIES**

SCALE: SHEET OF SHEETS STA. TO STA.

| F.A. RTE.          | SECTION                    | COUNTY           | TOTAL SHEETS | SHEET NO. |
|--------------------|----------------------------|------------------|--------------|-----------|
| VAR.               | D4 WEED SPRAYING 2019 (OR) | VARIOUS          | 21           | 20        |
| CONTRACT NO. 68E61 |                            |                  |              |           |
| ILLINOIS           |                            | FED. AID PROJECT |              |           |

HERBICIDE DOSAGE CHART

| WATER<br>(GALLONS) | MILESTONE VM* | DRIFT CONTROL**<br>(OZ.) | NON-IONIC<br>SURFACTANT***<br>PINTS | ACRES<br>OF R.O.W.<br>ACRE |
|--------------------|---------------|--------------------------|-------------------------------------|----------------------------|
| 40                 | 6             | 3.2                      | 0.8                                 | 1                          |
| 50                 | 7.5           | 4                        | 1                                   | 1.25                       |
| 100                | 15            | 8                        | 2                                   | 2.5                        |
| 200                | 30            | 16                       | 4                                   | 5                          |
| 300                | 45            | 24                       | 6                                   | 7.5                        |
| 400                | 60            | 32                       | 8                                   | 10                         |
| 500                | 75            | 40                       | 10                                  | 12.5                       |
| 600                | 90            | 48                       | 12                                  | 15                         |
| 700                | 105           | 56                       | 14                                  | 17.5                       |
| 800                | 120           | 64                       | 16                                  | 20                         |
| 900                | 135           | 72                       | 18                                  | 22.5                       |
| 1000               | 150           | 80                       | 20                                  | 25                         |
| 1100               | 165           | 88                       | 22                                  | 27.5                       |
| 1200               | 180           | 96                       | 24                                  | 30                         |
| 1300               | 195           | 104                      | 26                                  | 32.5                       |
| 1400               | 210           | 112                      | 28                                  | 35                         |
| 1500               | 225           | 120                      | 30                                  | 37.5                       |

- \* BASED ON 6 OUNCES OF MILESTONE VM FOR EACH 1.0 ACRE
- \*\* BASED ON 8 OUNCES OF DRIFT CONTROL AGENT PER 100 GALLONS
- \*\*\* BASED ON 2 PINTS OF NON-IONIC SURFACTANT FOR EACH 100 GALLONS OF WATER

**Notes:**

1. Suggested rate of water per acre. Refer to product label for verification.
2. Spraying machine shall be calibrated to deliver 6 oz of herbicide per acre 72 hr prior to job start.
3. Spot checks will be performed to check for herbicide delivery accuracy.

MODEL: Default  
 FILE NAME: p:\1108\B&E\BID\NTEC\Illinois.gov\PIV\DOT\Documents\1108\DOT\_Offices\Director\Projects\1108\_68E61\CADD\Drawings\68E61-CADD.dwg

|                              |            |           |
|------------------------------|------------|-----------|
| USER NAME = eversct          | DESIGNED - | REVISED - |
|                              | DRAWN -    | REVISED - |
| PLOT SCALE = 100,0000' / in. | CHECKED -  | REVISED - |
| PLOT DATE = 8/31/2018        | DATE -     | REVISED - |

**STATE OF ILLINOIS  
DEPARTMENT OF TRANSPORTATION**

**HERBICIDE DOSAGE CHART**

SCALE: SHEET OF SHEETS STA. TO STA.

|           |                            |          |                    |           |
|-----------|----------------------------|----------|--------------------|-----------|
| F.A. RTE. | SECTION                    | COUNTY   | TOTAL SHEETS       | SHEET NO. |
| VAR.      | D4 WEED SPRAYING 2019 (OR) | VARIOUS  | 21                 | 21        |
|           |                            |          | CONTRACT NO. 68E61 |           |
|           |                            | ILLINOIS | FED. AID PROJECT   |           |