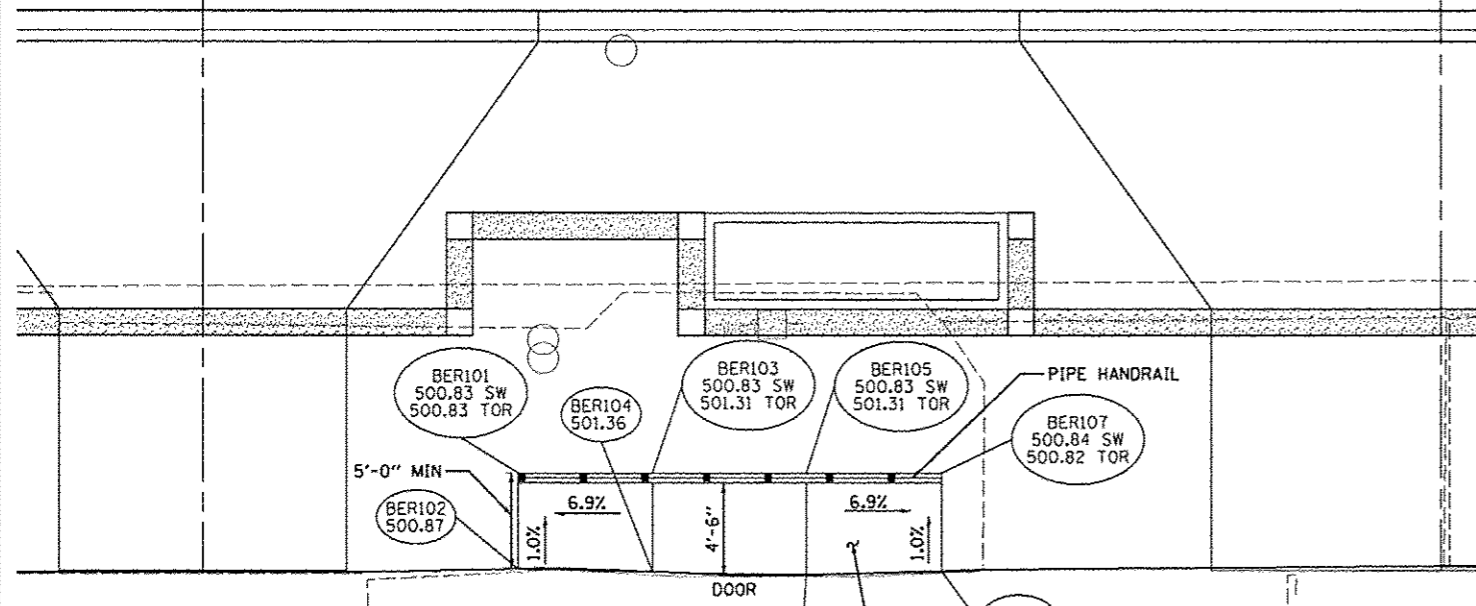


**ADAMS STREET (STA. 147+00 TO STA. 147+25 RT.)**

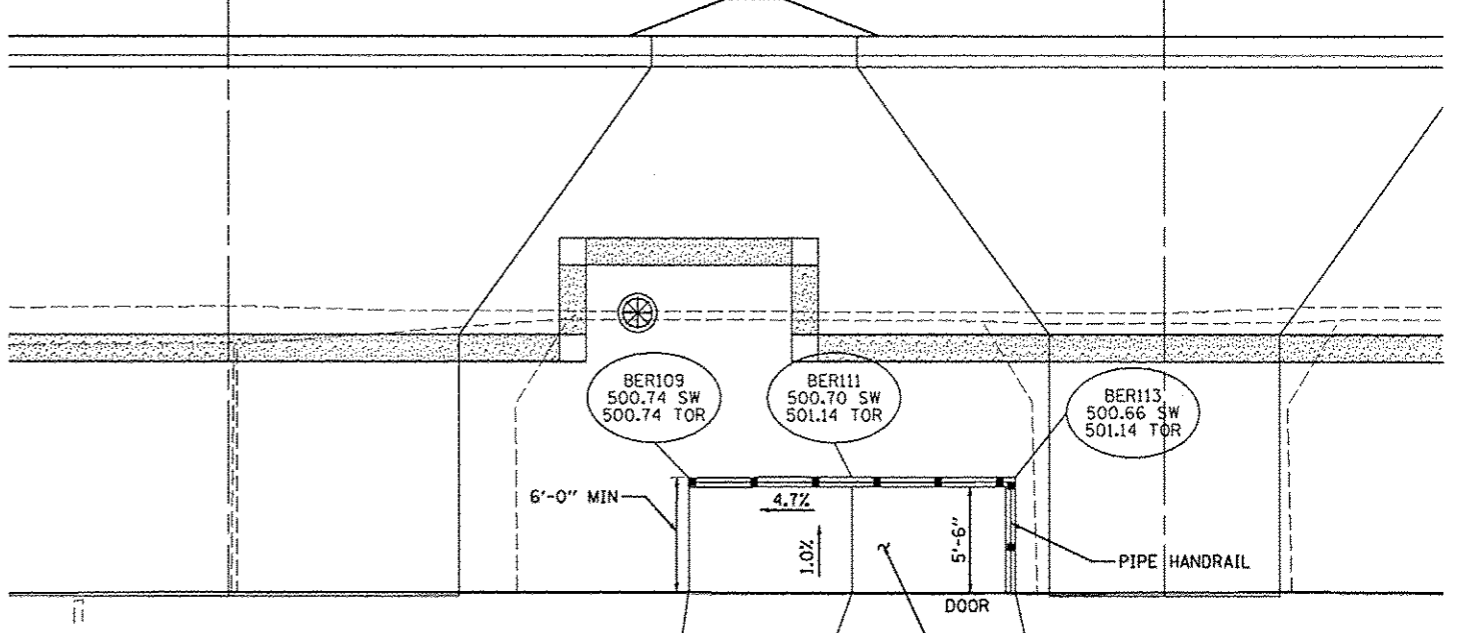


ADAMS STREET BUILDING ENTRANCE RAMP GRADES							
POINT NO.	STATION	OFFSET	SIDE	ELEVATION	LOCATION	ELEVATION	LOCATION
BER101	147+03.17	34.94	RT	500.83	TOR	500.83	SW
BER102	147+03.17	39.94	RT	500.87	TOR		
BER103	147+10.17	34.94	RT	501.31	TOR	500.83	SW
BER104	147+10.17	40.11	RT	501.36	TOR		
BER105	147+18.17	34.94	RT	501.31	TOR	500.83	SW
BER106	147+18.17	40.25	RT	501.36	TOR		
BER107	147+25.17	34.94	RT	500.82	TOR	500.84	SW
BER108	147+25.17	40.06	RT	500.87	TOR		

SIDEWALK, SPECIAL  
(SEE BUILDING ENTRANCE  
RAMP CONSTRUCTION DETAILS)

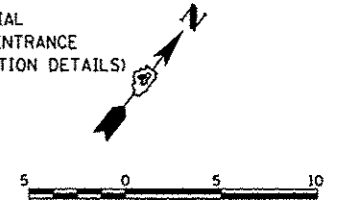
TOR	=	TOP OF RAMP
SW	=	SIDEWALK

**ADAMS STREET (STA. 147+80 TO STA. 147+92 RT.)**

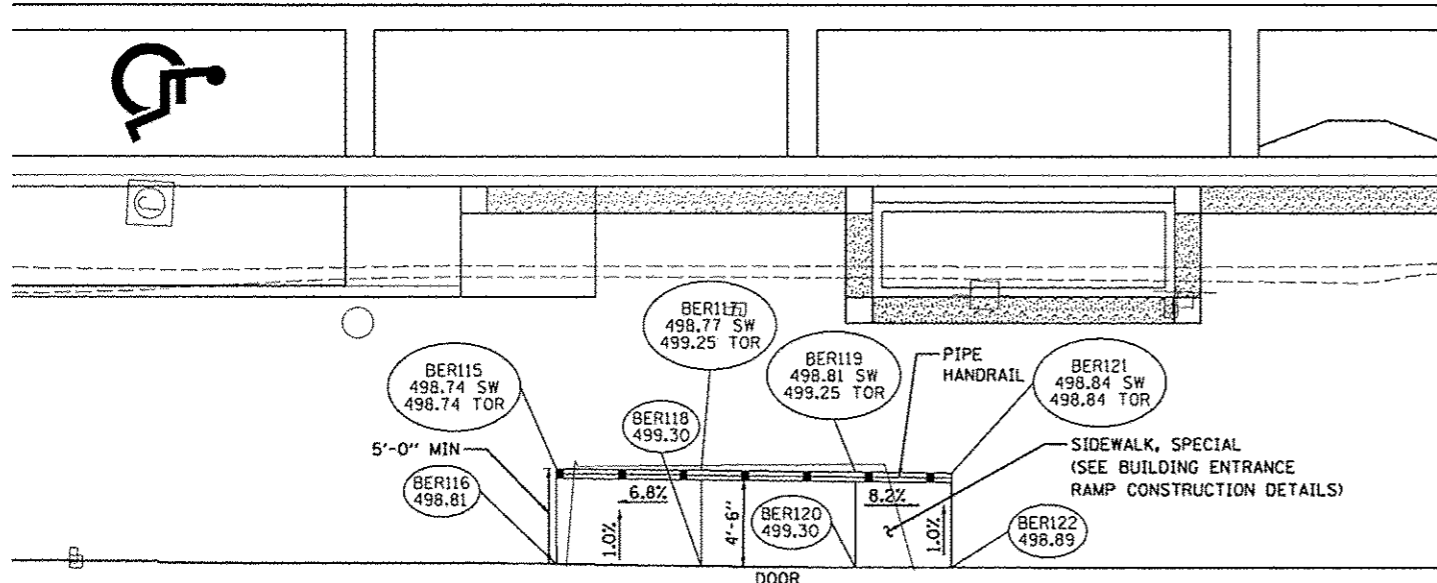


ADAMS STREET BUILDING ENTRANCE RAMP GRADES							
POINT NO.	STATION	OFFSET	SIDE	ELEVATION	LOCATION	ELEVATION	LOCATION
BER109	147+75.15	33.82	RT	500.74	TOR	500.74	SW
BER110	147+75.15	39.83	RT	500.80	TOR		
BER111	147+83.65	33.82	RT	501.14	TOR	500.70	SW
BER112	147+83.65	39.85	RT	501.20	TOR		
BER113	147+92.15	33.82	RT	501.14	TOR	500.66	SW
BER114	147+92.15	39.82	RT	501.20	TOR		

SIDEWALK, SPECIAL  
(SEE BUILDING ENTRANCE  
RAMP CONSTRUCTION DETAILS)



**ADAMS STREET (STA. 155+58 TO STA. 155+79 RT.)**

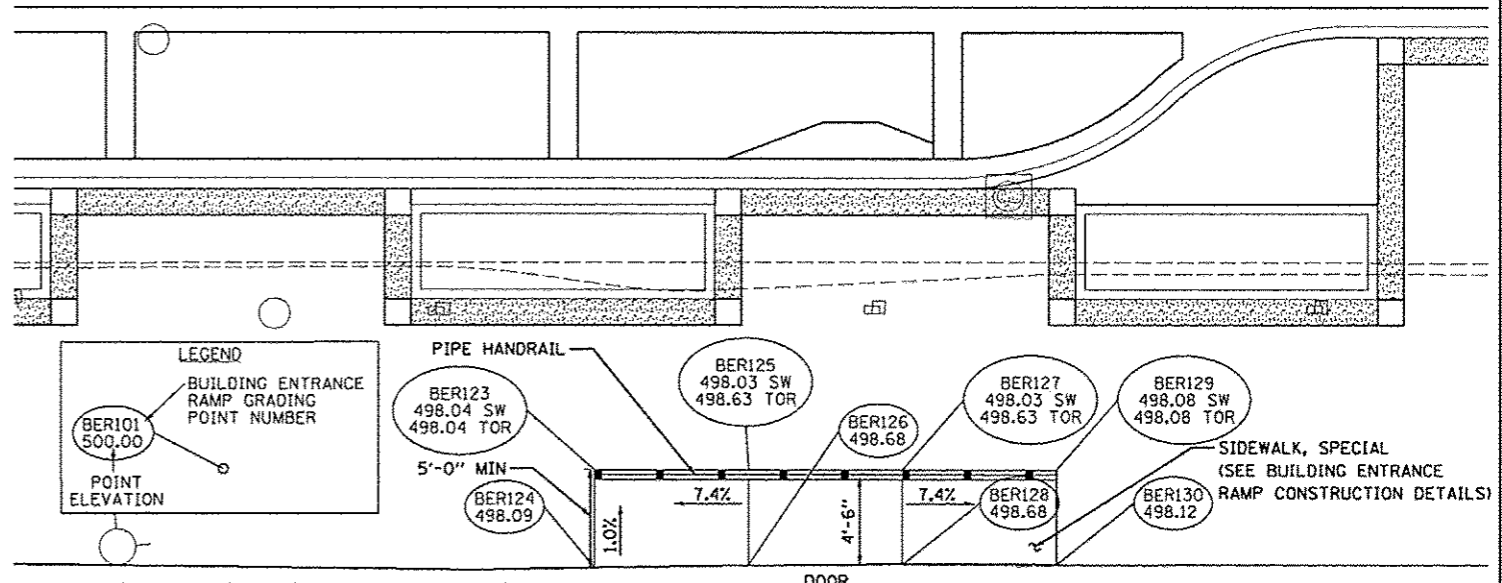


ADAMS STREET BUILDING ENTRANCE RAMP GRADES							
POINT NO.	STATION	OFFSET	SIDE	ELEVATION	LOCATION	ELEVATION	LOCATION
BER115	155+58.34	35.68	RT	498.74	TOR	498.74	SW
BER116	155+58.34	40.56	RT	498.81	TOR		
BER117	155+65.84	35.68	RT	499.25	TOR	498.77	SW
BER118	155+65.84	40.66	RT	499.30	TOR		

ADAMS STREET BUILDING ENTRANCE RAMP GRADES							
POINT NO.	STATION	OFFSET	SIDE	ELEVATION	LOCATION	ELEVATION	LOCATION
BER119	155+73.84	35.68	RT	499.25	TOR	498.81	SW
BER120	155+73.84	40.72	RT	499.30	TOR		
BER121	155+78.84	35.68	RT	498.84	TOR	498.84	SW
BER122	155+78.84	40.73	RT	498.89	TOR		

SIDEWALK, SPECIAL  
(SEE BUILDING ENTRANCE  
RAMP CONSTRUCTION DETAILS)

**ADAMS STREET (STA. 157+56 TO STA. 157+73 RT.)**



**LEGEND**

- BUILDING ENTRANCE RAMP GRADING POINT NUMBER
- POINT ELEVATION

ADAMS STREET BUILDING ENTRANCE RAMP GRADES							
POINT NO.	STATION	OFFSET	SIDE	ELEVATION	LOCATION	ELEVATION	LOCATION
BER123	157+56.75	35.46	RT	498.04	TOR	498.04	SW
BER124	157+56.75	40.62	RT	498.09	TOR		
BER125	157+64.75	35.46	RT	498.63	TOR	498.03	SW
BER126	157+64.75	40.46	RT	498.68	TOR		
BER127	157+72.75	35.46	RT	498.63	TOR	498.03	SW
BER128	157+72.75	40.46	RT	498.66	TOR		

ADAMS STREET BUILDING ENTRANCE RAMP GRADES							
POINT NO.	STATION	OFFSET	SIDE	ELEVATION	LOCATION	ELEVATION	LOCATION
BER129	157+80.75	35.46	RT	498.08	TOR	498.08	SW
BER130	157+80.75	40.46	RT	498.12	TOR		



FILE NAME =  
 USER NAME = manakB198  
 DESIGNED - DLC  
 DRAWN - RLA  
 CHECKED - KNB  
 DATE - 7/18/12  
 PLOT SCALE = 1/8"=1'-0"  
 PLOT DATE = 07/23/2012

REVISIONS  
 REVISED -  
 REVISED -  
 REVISED -  
 REVISED -

**STATE OF ILLINOIS  
 DEPARTMENT OF TRANSPORTATION**

**ADAMS STREET  
 BUILDING ENTRANCE RAMP GRADING DETAILS**  
 SCALE: 1"=5'  
 SHEET NO. OF SHEETS STA. TO STA.

F.A.U. RTE. SECTION COUNTY TOTAL SHEETS SHEET NO.  
 12-00356-01-PV PEORIA 519 407  
 CONTRACT NO. 89626  
 ILLINOIS FED. AID PROJECT TIG-50931501