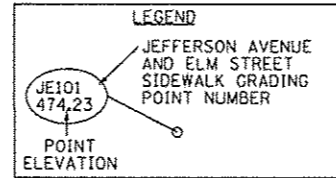
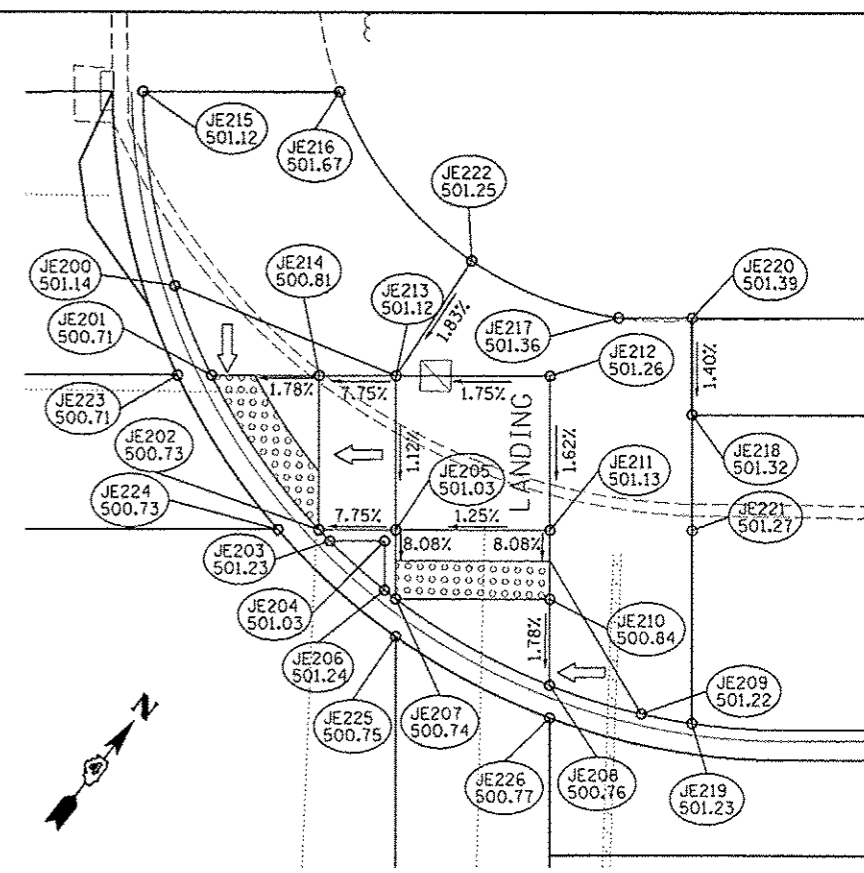
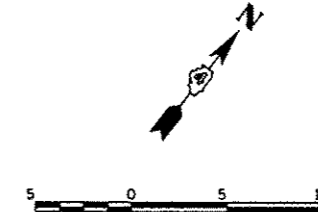


JEFFERSON AVENUE AND ELM STREET INTERSECTION SOUTHWEST SIDEWALK RAMP GRADES					
POINT NO.	STATION	OFFSET	SIDE	ELEVATION	LOCATION
JE100	249+66.41	17.58	LT	501.60	BOC
JE101	249+71.38	18.02	LT	501.11	SW
JE102	249+79.38	20.72	LT	501.03	SW
JE103	249+83.60	23.38	LT	501.44	BOC
JE104	249+71.38	20.72	LT	501.14	SW
JE105	249+71.38	26.72	LT	501.42	SW
JE106	249+79.38	26.72	LT	501.34	SW
JE107	249+84.90	24.43	LT	501.42	BOC
JE108	249+88.39	28.00	LT	500.93	SW
JE109	249+93.00	36.00	LT	500.85	SW
JE110	249+94.34	40.81	LT	501.26	BOC
JE111	249+88.39	36.00	LT	500.90	SW
JE112	249+82.39	28.00	LT	501.32	SW
JE113	249+82.39	36.00	LT	501.37	SW
JE114	249+66.40	34.00	LT	501.53	SW
JE115	249+77.04	39.00	LT	501.40	SW
JE116	249+77.04	47.42	LT	501.50	SW
JE117	249+94.80	47.51	LT	501.21	SW
JE118	249+66.40	39.00	LT	501.56	SW
JE119	249+77.03	36.00	LT	501.46	SW
JE120	249+82.82	47.45	LT	501.44	SW
JE121	249+94.69	36.00	LT	500.85	CW
JE122	249+90.40	28.00	LT	500.93	CW
JE123	249+79.38	18.95	LT	501.05	CW
JE124	249+71.38	16.42	LT	501.12	CW



JEFFERSON AVENUE AND ELM STREET INTERSECTION NORTHWEST SIDEWALK RAMP GRADES					
POINT NO.	STATION	OFFSET	SIDE	ELEVATION	LOCATION
JE200	250+30.12	40.62	LT	501.14	BOC
JE201	250+32.02	36.00	LT	500.71	SW
JE202	250+37.64	28.00	LT	500.73	SW
JE203	250+38.21	27.42	LT	501.23	TOC
JE204	250+41.06	27.42	LT	501.03	TOC
JE205	250+41.64	28.00	LT	501.03	SW
JE206	250+41.06	24.87	LT	501.24	TOC
JE207	250+41.64	24.41	LT	500.74	SW
JE208	250+49.64	19.91	LT	500.76	SW
JE209	250+54.41	18.43	LT	501.22	SW
JE210	250+49.64	24.41	LT	500.84	SW
JE211	250+49.64	28.00	LT	501.13	SW
JE212	250+49.64	36.00	LT	501.26	SW
JE213	250+41.64	36.00	LT	501.12	SW
JE214	250+37.64	36.00	LT	500.81	SW
JE215	250+28.47	50.60	LT	501.12	SW
JE216	250+38.69	50.59	LT	501.67	SW
JE217	250+53.21	39.00	LT	501.36	SW
JE218	250+57.05	34.00	LT	501.32	SW
JE219	250+57.05	17.94	LT	501.23	SW
JE220	250+57.05	39.00	LT	501.39	SW
JE221	250+57.05	28.00	LT	501.27	SW
JE222	250+45.56	41.92	LT	501.25	SW
JE223	250+30.26	36.00	LT	500.71	CW
JE224	250+35.50	28.00	LT	500.73	CW
JE225	250+41.64	22.45	LT	500.75	CW
JE226	250+49.64	18.21	LT	500.77	CW

EOP = EDGE OF PAVEMENT
 BOC = BACK OF CURB
 SW = SIDEWALK
 TOC = TOP OF CURB
 CW = CROSSWALK

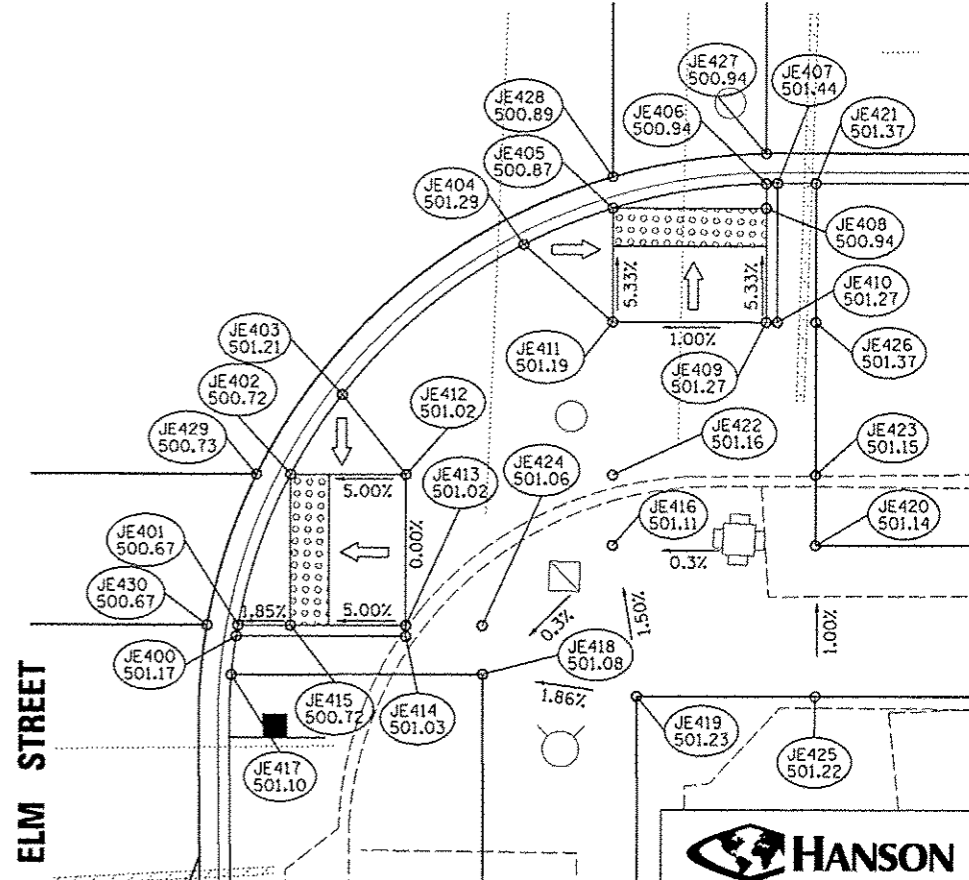


JEFFERSON AVENUE

JEFFERSON AVENUE

JEFFERSON AVENUE AND ELM STREET INTERSECTION SOUTHEAST SIDEWALK RAMP GRADES					
POINT NO.	STATION	OFFSET	SIDE	ELEVATION	LOCATION
JE300	249+70.80	13.36	RT	501.65	TOC
JE301	249+71.38	13.51	RT	501.20	SW
JE302	249+79.38	16.99	RT	501.03	SW
JE303	249+83.35	20.02	RT	501.34	BOC
JE304	249+85.84	22.60	RT	501.24	BOC
JE305	249+89.46	28.00	RT	500.61	SW
JE306	249+92.22	36.00	RT	500.49	SW
JE307	249+92.36	36.58	RT	500.99	TOC
JE308	249+89.46	36.00	RT	500.54	SW
JE309	249+83.46	36.58	RT	501.04	TOC
JE310	249+83.46	36.00	RT	501.04	SW
JE311	249+83.46	28.00	RT	501.09	SW
JE312	249+79.38	22.99	RT	501.09	SW
JE313	249+71.38	22.99	RT	501.25	SW
JE314	249+70.80	22.99	RT	501.25	TOC
JE315	249+71.38	16.99	RT	501.19	SW
JE316	249+79.38	28.00	RT	501.16	SW
JE317	249+71.38	28.00	RT	501.30	SW
JE318	249+74.10	39.24	RT	501.21	SW
JE319	249+74.10	34.65	RT	501.16	SW
JE320	249+68.80	12.96	RT	501.60	SW
JE321	249+68.80	39.24	RT	501.65	SW
JE322	249+75.97	39.24	RT	501.18	SW
JE323	249+83.97	38.81	RT	501.04	SW
JE324	249+92.85	38.77	RT	500.92	SW
JE325	249+68.80	28.00	RT	501.36	SW
JE326	249+68.80	34.65	RT	501.49	SW
JE327	249+71.38	11.87	RT	501.21	CW
JE328	249+79.38	15.13	RT	501.06	CW
JE329	249+91.22	28.00	RT	500.61	CW
JE330	249+93.84	36.00	RT	500.49	CW
JE331	249+79.38	36.00	RT	501.12	CW

JEFFERSON AVENUE AND ELM STREET INTERSECTION NORTHEAST SIDEWALK RAMP GRADES					
POINT NO.	STATION	OFFSET	SIDE	ELEVATION	LOCATION
JE400	250+22.12	36.58	RT	501.17	TOC
JE401	250+22.22	36.00	RT	500.67	SW
JE402	250+24.92	28.00	RT	500.72	SW
JE403	250+27.59	23.78	RT	501.21	BOC
JE404	250+37.03	15.81	RT	501.29	BOC
JE405	250+41.64	13.90	RT	500.87	SW
JE406	250+49.64	12.59	RT	500.94	SW
JE407	250+50.23	12.58	RT	501.44	TOC
JE408	250+49.64	13.90	RT	500.94	SW
JE409	250+49.64	19.90	RT	501.27	SW
JE410	250+50.23	19.90	RT	501.27	TOC
JE411	250+41.64	19.90	RT	501.19	SW
JE412	250+30.92	28.00	RT	501.02	SW
JE413	250+30.92	36.00	RT	501.02	SW
JE414	250+30.92	36.58	RT	501.03	TOC
JE415	250+24.92	36.00	RT	500.72	SW
JE416	250+41.64	31.72	RT	501.11	SW
JE417	250+21.87	38.63	RT	501.10	SW
JE418	250+34.93	38.56	RT	501.08	SW
JE419	250+42.93	39.72	RT	501.23	SW
JE420	250+52.23	31.72	RT	501.14	SW
JE421	250+52.23	12.58	RT	501.37	SW
JE422	250+41.64	28.00	RT	501.16	SW
JE423	250+52.23	28.00	RT	501.15	SW
JE424	250+34.92	36.00	RT	501.06	SW
JE425	250+52.23	39.72	RT	501.22	SW
JE426	250+52.23	19.90	RT	501.37	SW
JE427	250+49.64	11.01	RT	500.94	CW
JE428	250+41.64	12.24	RT	500.89	CW
JE429	250+23.15	28.00	RT	500.73	CW
JE430	250+20.61	36.00	RT	500.67	CW



JEFFERSON AVENUE

