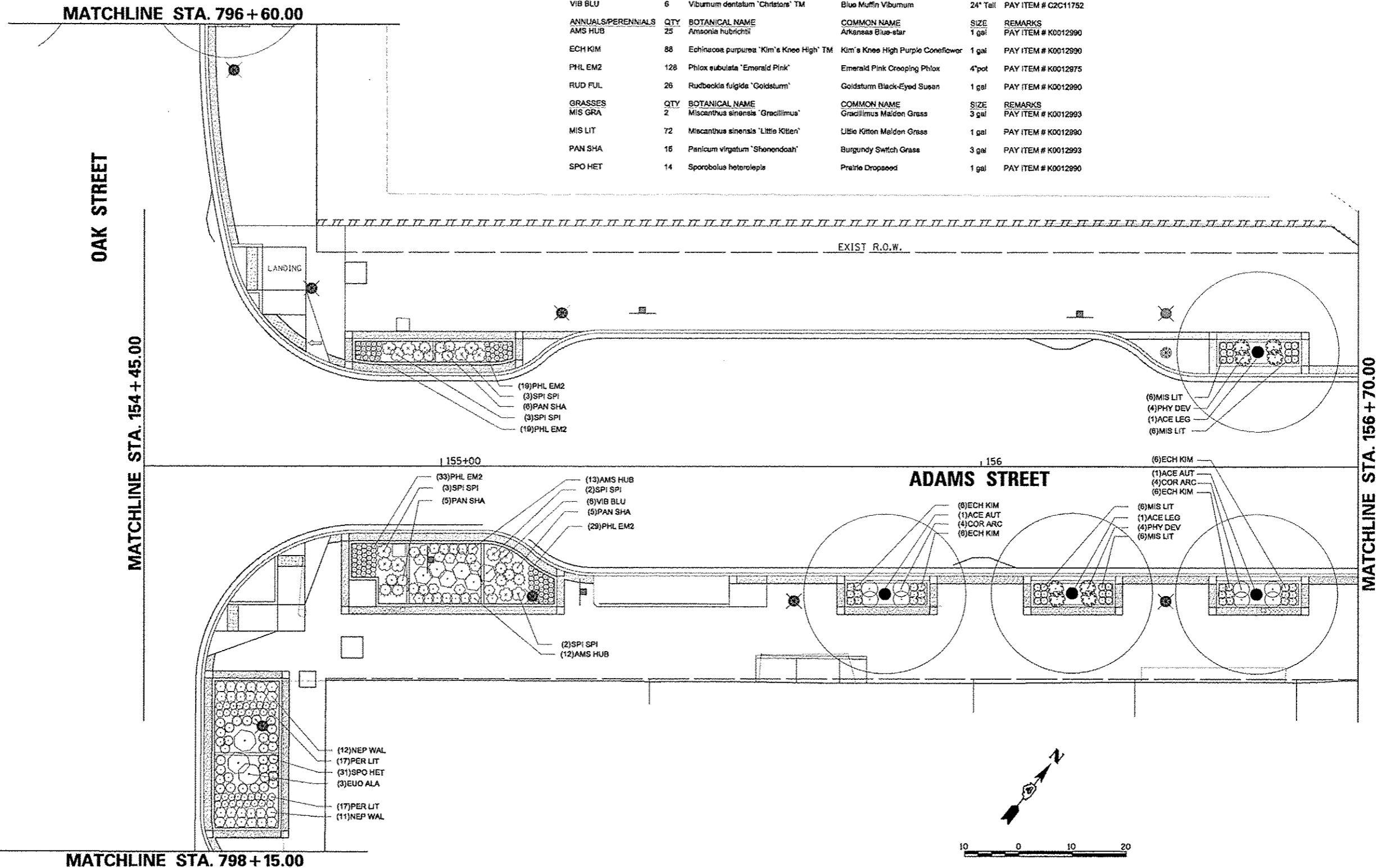


PLANT SCHEDULE ADAMS - OAK TO STATE

| TREES | QTY | BOTANICAL NAME | COMMON NAME | SIZE | REMARKS |
|--------------------|-----|--|-----------------------------------|----------|---------------------|
| ACE LEG | 6 | <i>Acer saccharum</i> 'Legacy' | Legacy Sugar Maple | 2" Cal | PAY ITEM # A2001916 |
| ACE AUT | 6 | <i>Acer x freemanii</i> 'Autumn Blaze' | Autumn Blaze Freeman Maple | 2" Cal | PAY ITEM # A2000116 |
| SHRUBS | QTY | BOTANICAL NAME | COMMON NAME | SIZE | REMARKS |
| COR ARC | 28 | <i>Cornus sanguinea</i> 'Arctic Sun' | Arctic Sun Dogwood | 2" Tall | PAY ITEM # C2C01612 |
| EUO ALA | 1 | <i>Euonymus alata</i> 'Compacta' | Dwarf Winged Euonymus | 3" Tall | PAY ITEM # C2002636 |
| PHY DEV | 24 | <i>Physocarpus opulifolius</i> 'Donna May' | Little Devil Ninebark | 18" Tall | PAY ITEM # C2C04875 |
| SPI SPI | 13 | <i>Spiraea japonica</i> 'Little Princess' | Little Princess Japanese Spiraea | 18" Tall | PAY ITEM # C2C10218 |
| VIB BLU | 6 | <i>Viburnum dentatum</i> 'Chistone' TM | Blue Muffin Viburnum | 24" Tall | PAY ITEM # C2C11752 |
| ANNUALS/PERENNIALS | QTY | BOTANICAL NAME | COMMON NAME | SIZE | REMARKS |
| AMS HUB | 25 | <i>Amsonia hubrichtii</i> | Arkansas Blue-star | 1 gal | PAY ITEM # K0012990 |
| ECH KIM | 88 | <i>Echinacea purpurea</i> 'Kim's Knee High' TM | Kim's Knee High Purple Coneflower | 1 gal | PAY ITEM # K0012990 |
| PHL EM2 | 128 | <i>Phlox subulata</i> 'Emerald Pink' | Emerald Pink Crooping Phlox | 4" pot | PAY ITEM # K0012975 |
| RUD FUL | 26 | <i>Rudbeckia fulgida</i> 'Goldsturm' | Goldsturm Black-Eyed Susan | 1 gal | PAY ITEM # K0012990 |
| GRASSES | QTY | BOTANICAL NAME | COMMON NAME | SIZE | REMARKS |
| MIS GRA | 2 | <i>Miscanthus sinensis</i> 'Gracillimus' | Gracillimus Maiden Grass | 3 gal | PAY ITEM # K0012993 |
| MIS LIT | 72 | <i>Miscanthus sinensis</i> 'Little Kitten' | Little Kitten Maiden Grass | 1 gal | PAY ITEM # K0012990 |
| PAN SHA | 16 | <i>Panicum virgatum</i> 'Shonendoah' | Burgundy Switch Grass | 3 gal | PAY ITEM # K0012993 |
| SPO HET | 14 | <i>Sporobolus heterolepis</i> | Prairie Dropseed | 1 gal | PAY ITEM # K0012990 |



| | | | |
|--|------------------------------|----------------|-----------|
| FILE NAME * | USER NAME = mansk01398 | DESIGNED - JLH | REVISED - |
| o:\p\iso-work\do-not-delete\adms73427\04 | RLB155-ah-plant000.dgn | DRAWN - JLH | REVISED - |
| | PLOT SCALE = 24.0000' / 1" = | CHECKED - BAB | REVISED - |
| | PLOT DATE = 07/23/2012 | DATE - 7/18/12 | REVISED - |

STATE OF ILLINOIS
DEPARTMENT OF TRANSPORTATION

ADAMS STREET
PLANTING PLAN

SCALE: 1"=10' SHEET NO. OF SHEETS STA. 154+45 TO STA. 156+70

| | | | | |
|--------------------|----------------|--------|---------------------------------------|-----------|
| F.A.U. RTE. | SECTION | COUNTY | TOTAL SHEETS | SHEET NO. |
| 155 | 12-00356-01-PV | PEORIA | 519 | 332 |
| CONTRACT NO. 89626 | | | ILLINOIS FED. AID PROJECT TIC-5093058 | |

Farnsworth GROUP
7707 N. KNOXVILLE AVE., SUITE 100
PEORIA, ILLINOIS 61614
(309) 696-8058 / (309) 699-8820 Fax
www.fw.com